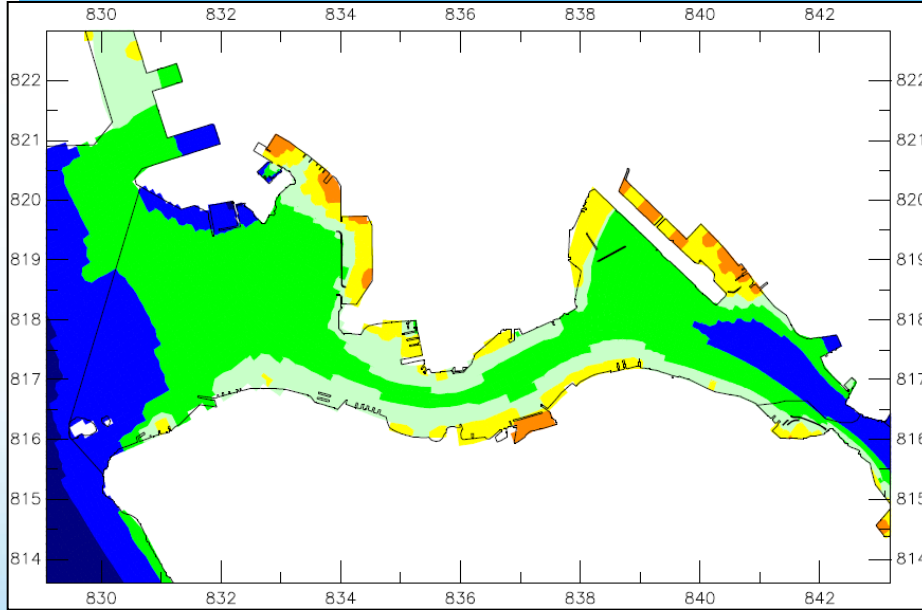


進一步提升維港沿岸水質

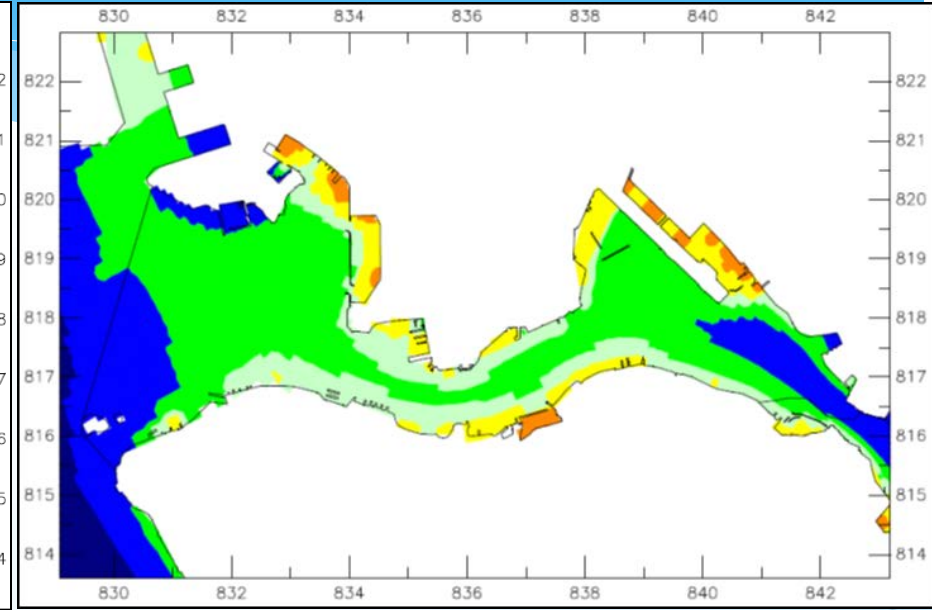
Further Enhancing  
Quality of Coastal Waters  
of Victoria Harbour

# 大腸桿菌水平的預測

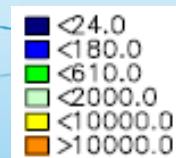
## Prediction of *E.Coli* Levels



預測在淨化海港計劃  
第二期甲的最終流量  
Prediction at Ultimate Flow  
of HATS Stage 2A

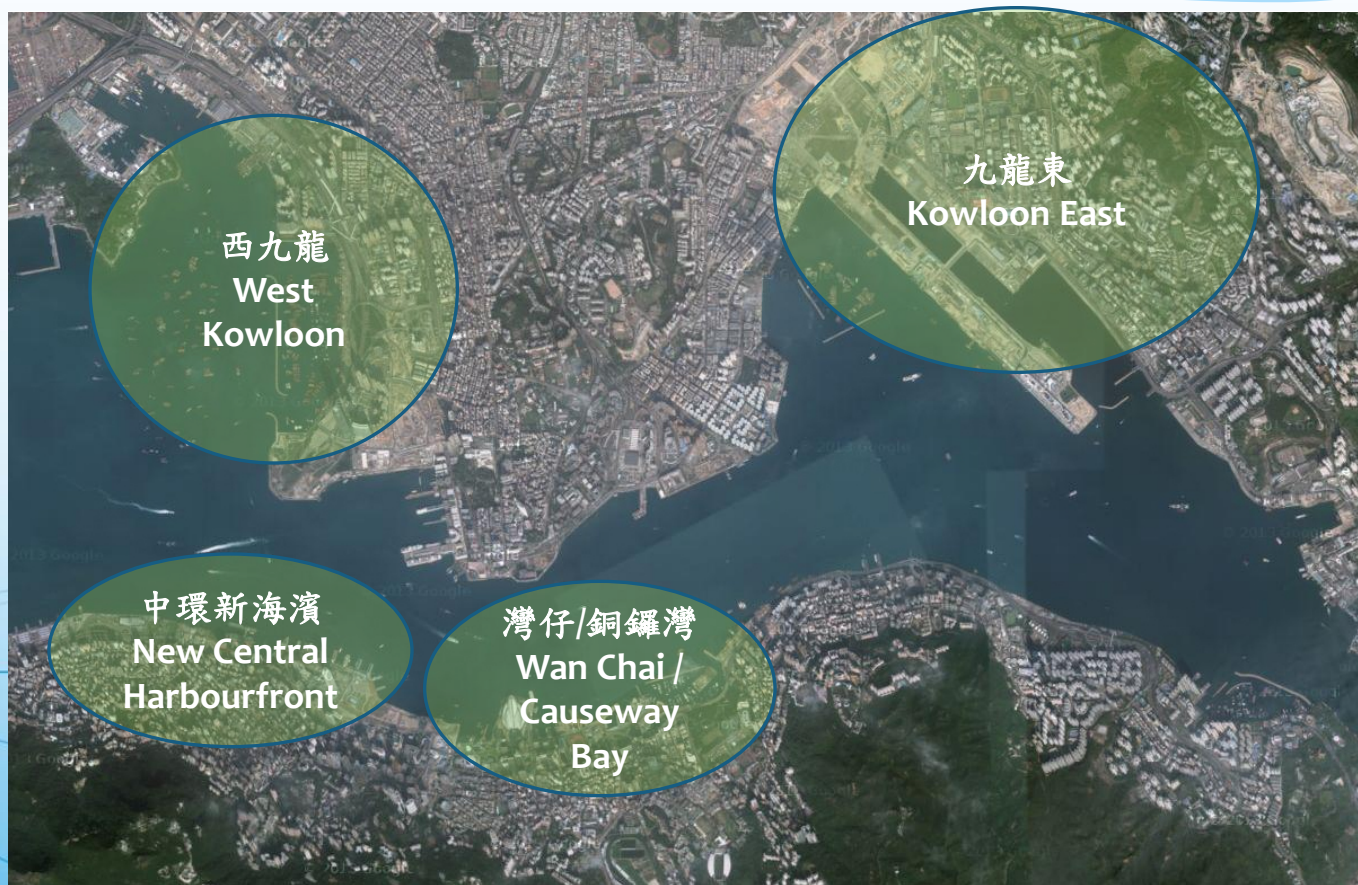


預測在淨化海港計劃第二期乙  
後期階段的最終流量  
Prediction at Ultimate Flow of  
Late Phase of HATS Stage 2B



每百毫升的大腸桿菌數量  
Number of *E. coli* count in 100ml  
(平均水深的全年幾何平均數  
Annual Geometric Mean Depth Averaged)

隨著新海濱長廊的發展，市民前往維港海濱已愈見方便。我們有必要尋找更有效的解決方案去提升維港沿岸水質。  
**With the development of new waterfront promenades, Victoria Harbour has become increasingly accessible to the public. Effective solutions are required to enhance quality of our coastal waters.**

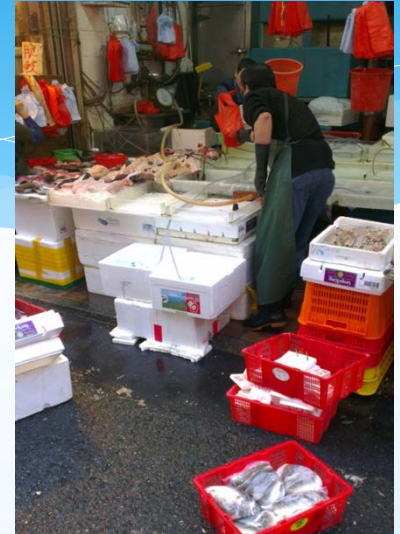


# 可能造成近岸污染的成因

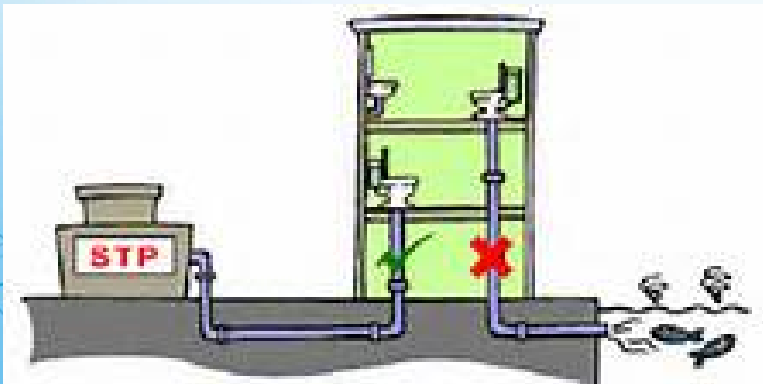
## Possible Causes of Near Shore Pollution

- 由許多路邊活動，如店鋪/經營者、街市和亂拋垃圾所造成的受污染的街道地面徑流

**Overland polluted storm water flow caused by a number of activities such as roadside shops/business operators and littering**



- 排水渠錯駁造成污染  
**Mis-connection between foul sewers and storm drains**
- 海上垃圾、海面的油脂  
**Marine refuse, grease and oil at sea**



# 建議顧問研究的目標

## Objectives of the Proposed Consultancy Study

- 減少近岸水質污染，藉此進一步改善維港兩岸的整體環境（外觀及氣味）  
To reduce near shore water pollution thus to improve the environment of both sides of Victoria Harbour (both aesthetic and odour)
- 訂出計劃以改善受歡迎的海濱地區的環境  
To work out a programme to improve the environment of our popular waterfront areas



# 為何需要進行顧問研究？

## Why is a Consultancy Study required?

- 對於近岸污染，我們現時掌握的數據有限。因此需要進行實地調查

**At present, there are only limited data on near shore pollution; field surveys are therefore required**

- 不同地區的近岸污染源及其比重也有不同，透過進行地區性實據檢討和環境調查，可以提供重要的數據以找出針對不同地區的措施

**Sources of near shore pollution are site specific. Evidence-based reviews and environmental investigation of individual areas can provide important data to identify site specific solutions**

# 實地調查的例子

## Examples of Field Surveys



收集沉澱物樣本  
Sediment sampling

進入沙井調查  
Man Entry Survey



目視檢查和氣味巡邏  
Visual inspection  
and odour patrol



收集空氣樣本  
Air sampling

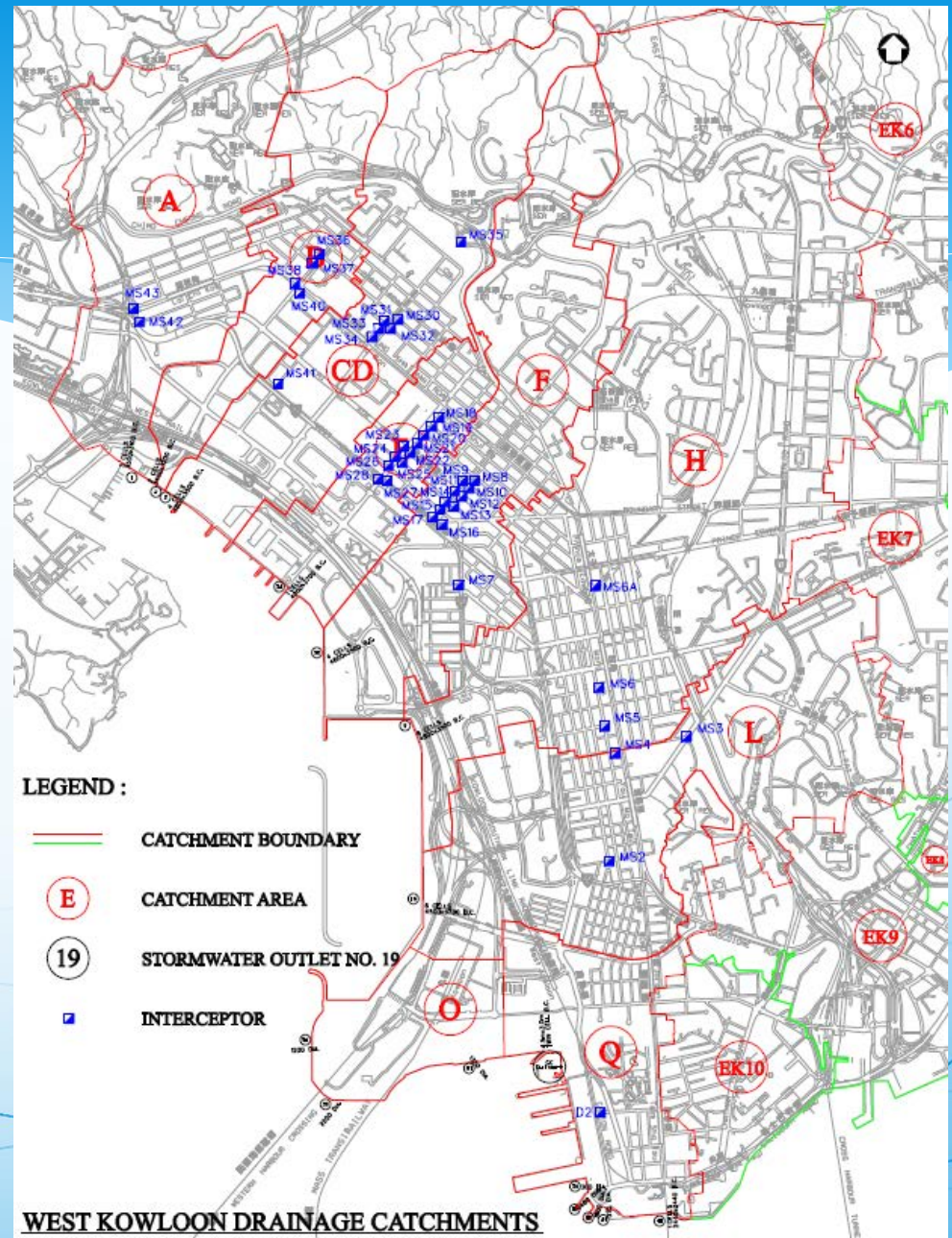


# 實地調查的例子

## Examples of Field Surveys



受污染雨水排水口的腹地調查  
Investigation of hinterland of  
polluted storm outfalls

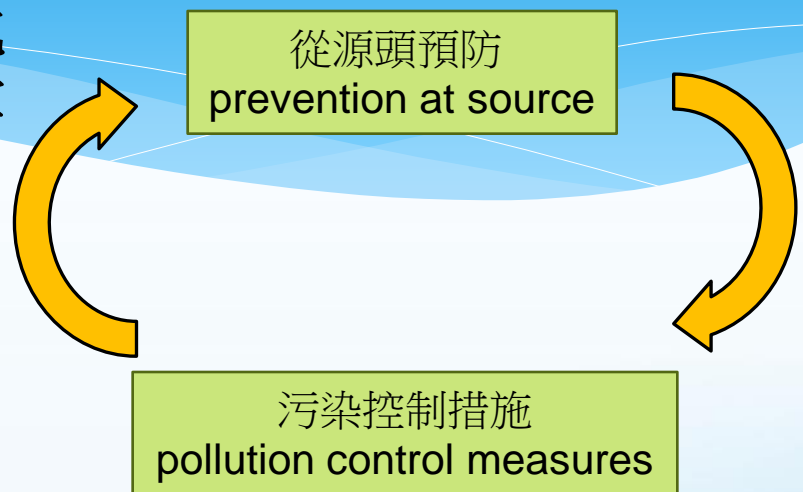




# 為何需要進行顧問研究？

## Why is a Consultancy Study required?

- 可按著所收集的數據，就個別地區建議務實和針對性的解決方案  
**Based on the data collected, practicable and targeted measures can be recommended for specific locations**



- 科學化的數據為解決方案、執行的先後次序、資源分配及有可能顯著影響的措施提供重要的支持  
**Scientific data justify practicable measures and decisions on setting priority, resources allocation and initiatives with possibly significant impacts**

# 顧問研究的安排

## Arrangement of the Consultancy Study

- 已於**2014年3及4月**，諮詢持份者的意見  
**Consulted stakeholders in March and April 2014**
- 已於**2014年6 - 8月**，諮詢**9個**相關的區議會，  
環境諮詢委員會及海濱事務委員會  
**Consulted 9 relevant District Councils , the  
Advisory Council on the Environment and the  
Harbourfront Commission in June - August 2014**



# 顧問研究的安排

## Arrangement of the Consultancy Study

- 於應屆立法會會期申請撥款  
**Seek funding within the current LegCo session**
- 如撥款申請獲批，於**2015**年批出顧問研究合約  
**Award the consultancy study in 2015 subject to approval of funding application**
- 在合約批出後**24**個月內完成顧問研究  
**Complete the consultancy study in 24 months**



多謝  
**Thank You**