



梅窩以前家家戶戶養牛耕田，約有一百隻。2005年，當時政府捕捉及屠殺超過80隻牛。2013年的遷移行動中，漁農署更被揭使用粗暴手法對待牛隻，強搶小牛、以繩拖頸，甚至活生生扯脫牛角。經歷連串風波後，梅窩牛牛僅餘17隻。此後，引起了各界的關注，關注大嶼山牛隻，包括水牛和黃牛的保育問題。

Long time ago, every household who lived in Mui Wo raise cattle for farming. There were about one hundred. In 2005 government captured and massacred more than 80 of them. In the 2013 migration operation, the Agriculture, Fisheries and Conservation Department was accused for handling cattle brutally. They took calf away from the cattle, drag them with rope on neck, even pull off horns from living cattle. After all of these incidents, only 17 cattle in Mui Wo left. Since then those cattle attracted attention from the community on the issue of the conservation of the cows that are living in Lantau Island, including buffalo and cattle.



這是現況，由於牛隻要避走車輛，牠們要走在行人路上，而且行人路上並沒有為牠們而設的擋風或遮雨的地方。

This is the current condition of the cattle: they have to walk on the pedestrian pathway for avoiding cars. Also, there is no facilities on the pathway for the cattle to rest or hide from the rain.



元G  
新W

GROUNDWORK | ARCHITECTURE+URBANISM Ltd.  
[www.groundwork.com](http://www.groundwork.com)

樂牛遊

我們選擇了10個地點進行保育水牛及黃牛計劃。但我們並不會對每個地點進行個別發展，我們會將10個地點聯合打造成一個保育網絡，貫通大嶼山南部的東面至西面。

We selected 10 sites to develop for the plan of Water Buffalo and Cattle conservation.

However, these 10 sites will not be developed independently. We will create a network by connecting these 10 sites. This network will connect through south Lantau Island from east to west with a designated function of each site.

cattle herd



這是我們的願景  
This is our vision..



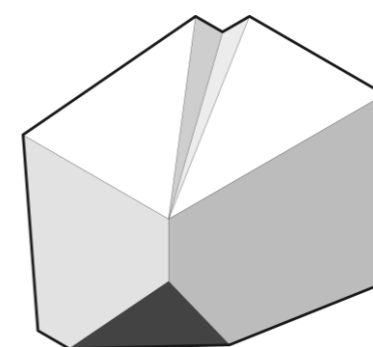
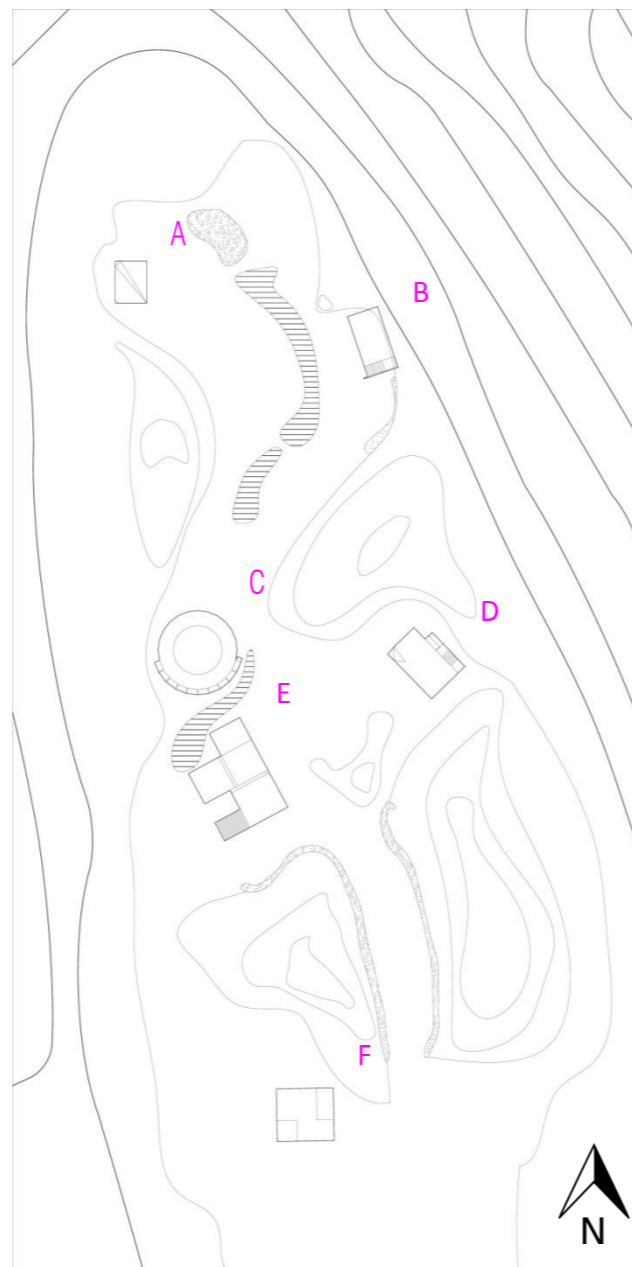
元G  
新W

GROUNDWORK | ARCHITECTURE+URBANISM Ltd.  
[www.groundwork.com](http://www.groundwork.com)

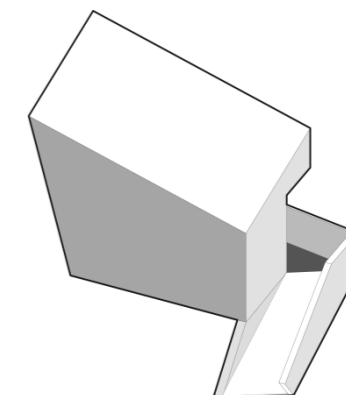
樂牛遊

這些建築物的設計主要把地面留空，把使用空間集中在一樓。這樣在一樓與地面之間形成一個遮蔭的空間，好讓牛隻在內休息。而材料方面我們主要選用木材，這樣整個設計更貼近自然。

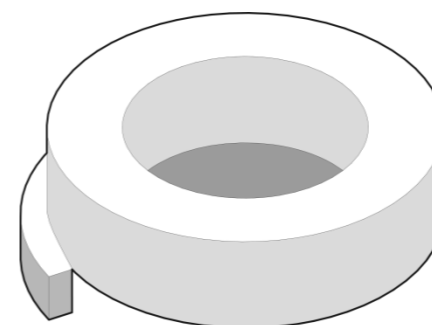
Our design try to lift the ground floor up and leave the space for cattle to rest in the shadow. The main occupied space in the first floor and above. Also, we choose wood as the main material in other to match the nature setting.



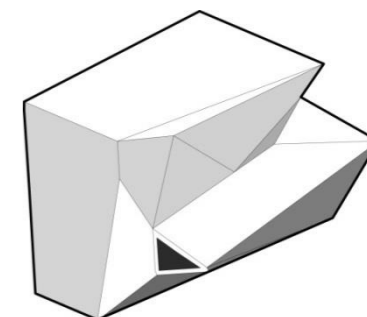
A | 醫療中心 | Medical Center



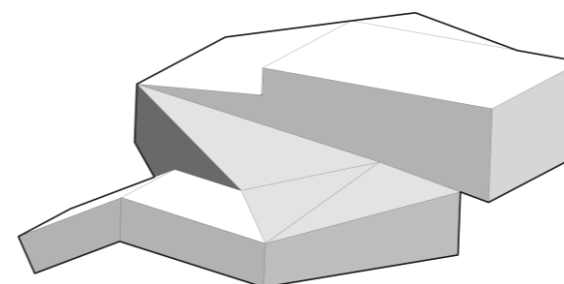
B | 放影中心 | Movie Center



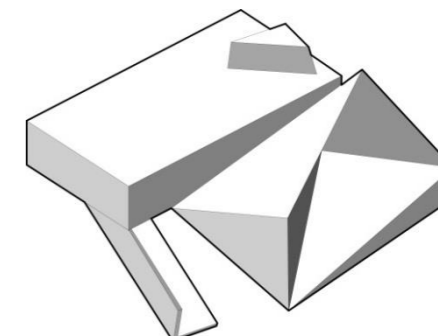
C | 展覽中心 | Exhibition Center



D | 活動中心 | Activities Center



E | 教育中心 | Education Center



F | 培訓中心 | Staff Training Center



元G  
新W

GROUNDWORK | ARCHITECTURE+URBANISM Ltd.  
www.groundwork.com

樂牛遊