

westKowloon

西九文化區

西九文化區與鄰近地區的融合和連接

**Integration and connectivity of the West Kowloon
Cultural District with its neighbouring districts**

12/01/2015

題目： Topics:

- 1 公眾諮詢
Public Consultation
- 2 西九龍填海區的道路與行人基建
Vehicular and Pedestrian Infrastructure in West Kowloon Reclamation Area (WKRA)
- 3 運輸基建的進展
Progress Update on the Transport Infrastructure
- 4 交通營運計劃
Traffic Operation Plan

公眾諮詢

Public Consultation

1

油尖旺區議會 - 2014年8月21日
YTM District Council - 21 August 2014

2

海濱事務委員會轄下的九龍、荃灣及葵青海濱發展
專責小組 - 2014年9月10日
Harbourfront Commission Task Force on Harbourfront
Developments in Kowloon, Tsuen Wan and Kwai Tsing
- 10 September 2014

3

毗連物業超過50位的租戶代表- 2014年11月13日
Over 50 tenant representatives of the neighbouring
development– 13 November 2014

西九龍填海區的道路基建

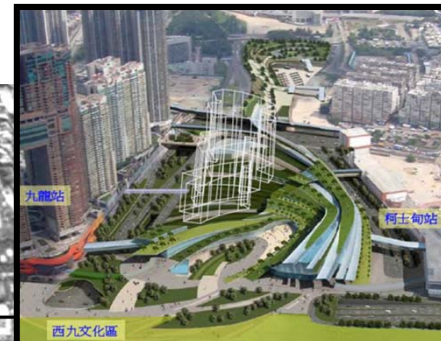
Vehicular Infrastructure in WKRA



西九龍填海區的發展項目 New Developments in WKRA



九龍站上蓋發展 -
約110萬米總樓面面積
Topside development of
Kowloon Station - about
1,100,000 m² GFA



九龍站
柯士甸站
西九文化區
高鐵西九龍總站(2017) -
約30萬米總樓面面積
XRL West Kowloon Terminus (2017) -
about 300,000 m² GFA



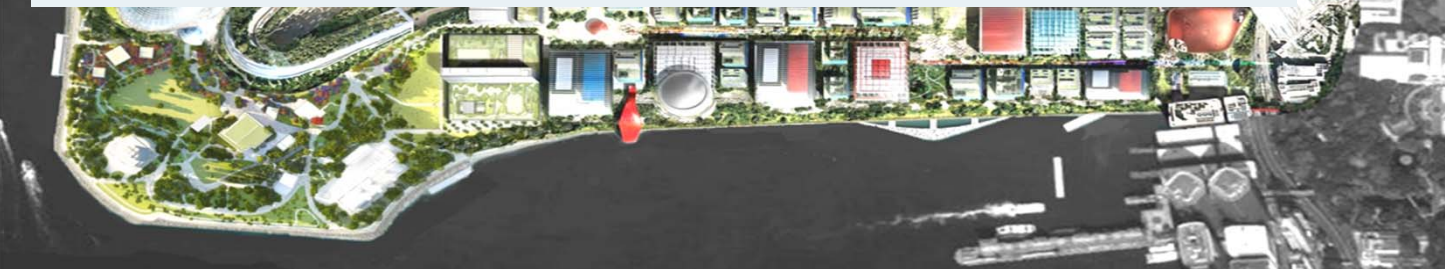
柯士甸站上蓋發展(2015)-
約1,000 單位
Topside development of Austin Station
(2015) - about 1,000 units

westKowloon
西九文化區

西九文化區新增交通流量 (2031)

New Traffic Generation by WKCD (by 2031)

起點 / 終點 Origin / Destination	旅程百分比 (%) Percentage of trips (%)
往香港島 (經西隧) To Hong Kong Island (via Western Harbour Crossing)	10
往美孚, 葵涌, 荃灣, 沙田, 大嶼山, 新界西北區 To Mei Foo, Kwai Chung, Tsuen Wan, Shatin, Lantau, Northwest NT	47
往觀塘, 將軍澳, 東九龍 (經中九龍幹線) To Kwun Tong, Tseung Kwan O, East Kowloon (via Central Kowloon Route)	12
往旺角, 油麻地 To Mongkok, Yau Ma Tei	14
往佐敦, 紅磡 To Jordan, Hung Hom	8
往尖沙咀 To Tsim Sha Tsui	9



由鄰近地區前往西九已規劃的車輛連接 Planned Vehicular Connections from Neighbouring Districts to WKCD



Scheme 1
計劃 1

Proposed single lane elevated road connecting Hoi Po Road to West Kowloon Highway northbound
擬建高架單線行車道連接海寶路至西九龍公路北行方向



Central Kowloon Route
中九龍幹線

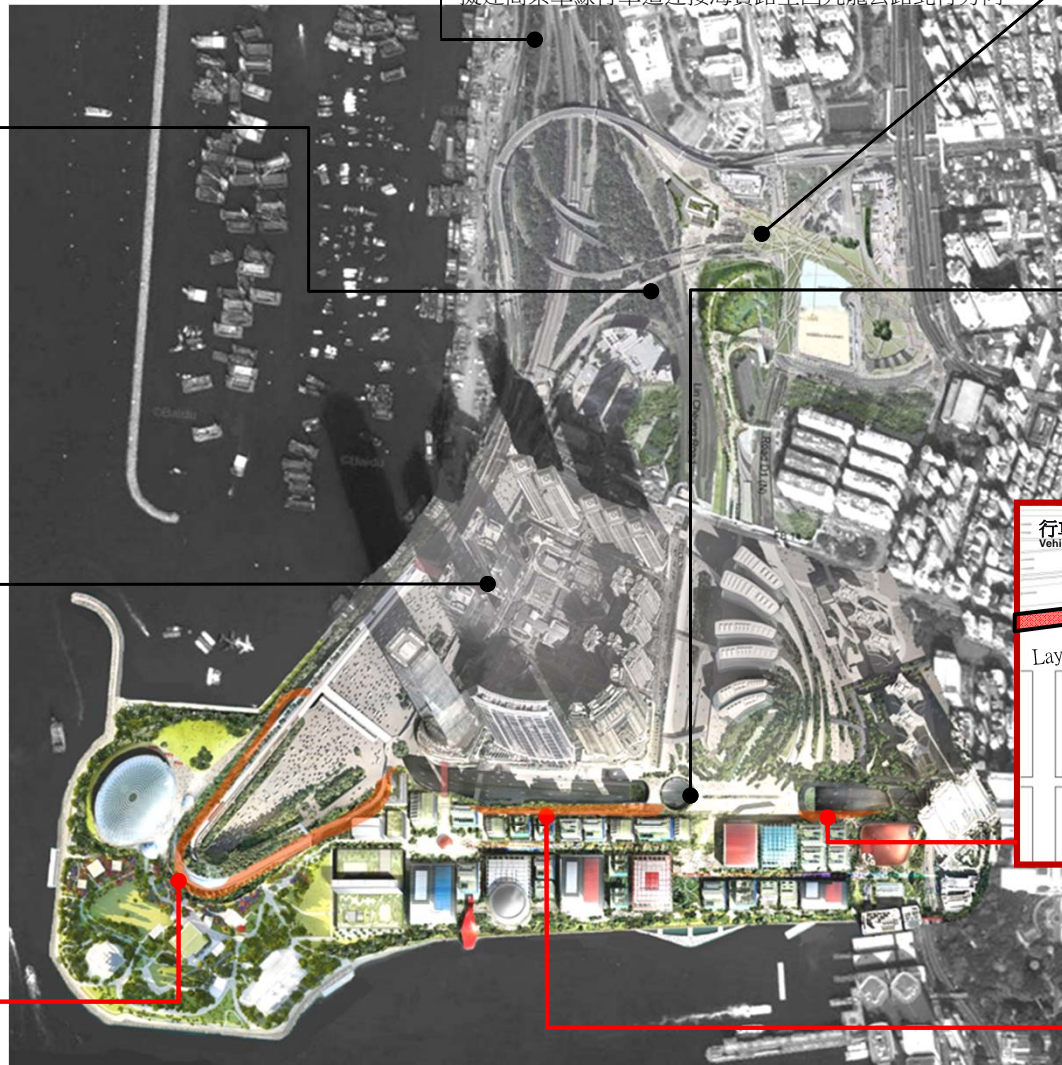


Depressed Austin Road West and Lin Cheung Road junction
低於地面的柯士甸道西與連翔道交匯處



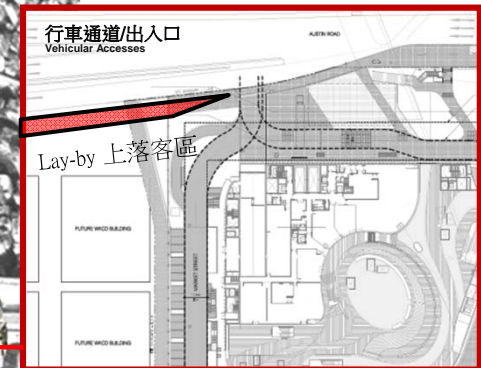
Scheme 3
計劃 3

Proposed single lane at-grade road connecting West Kowloon Highway southbound to elevated Nga Cheung Road
擬建地面單線行車道連接西九龍公路南行方向至雅翔道高架路段



Scheme 2
計劃 2

Proposed single lane elevated road connecting elevated Nga Cheung Road to toll plaza of WHC
擬建高架單線行車道連接雅翔道高架路段至西區海底隧道收費廣場



Lay-by at East Gate
東閘路旁上落客區

Lay-by at West Gate
西閘路旁上落客區

At-grade road around the Western Harbour Crossing tunnel portal
西區海底隧道出入口一帶地面路段

進入/離開路徑 - 香港島

Ingress/ egress Routing – Hong Kong Island



往香港島 (經西隧)
To Hong Kong Island
(via Western Harbour
Crossing) **10%**

進入/離開路徑 - 旺角、油麻地、佐敦、紅磡

Ingress/ egress Routing – Mongkok, Yau Ma Tei, Jordan, Hung Hom



往旺角、油麻地 To Mongkok, Yau Ma Tei	14%
往佐敦、紅磡 To Jordan, Hung Hom	8%

進入/離開路徑 - 尖沙咀

Ingress/ egress Routing – Tsim Sha Tsui



往尖沙咀
To Tsim Sha Tsui **9%**

進入/離開路徑 - 觀塘、將軍澳、東九龍

Ingress/ egress Routing – Kwun Tong, Tseung Kwan O, East Kowloon



往 觀塘、將軍澳、東九龍 (經中九龍幹線)
To Kwun Tong, Tseung Kwan O, East Kowloon (via Central Kowloon Route)

12%

進入/離開路徑 - 美孚、葵涌、荃灣、沙田、大嶼山、新界西北區

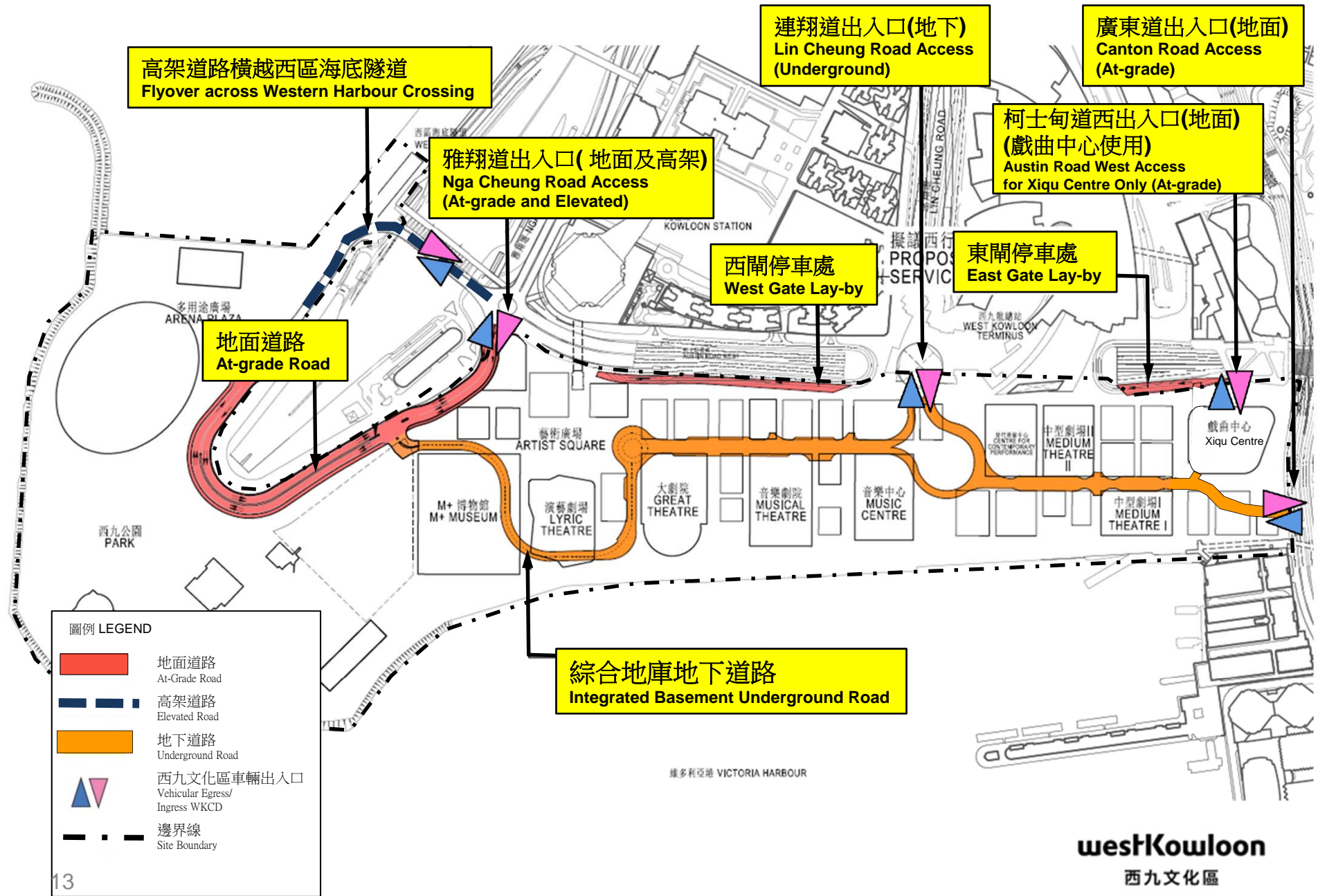
Ingress/ egress Routing – Mei Foo, Kwai Chung, Tsuen Wan, Shatin, Lantau, Northwest NT



往美孚、葵涌、荃
灣、沙田、大嶼山、
新界西北區
To Mei Foo, Kwai
Chung, Tsuen Wan,
Shatin, Lantau,
Northwest NT

47%

Vehicular Infrastructures 道路基建



圖例 LEGEND

- 地面道路
At-Grade Road
- 高架道路
Elevated Road
- 地下道路
Underground Road
- 西九文化區車輛出入口
Vehicular Egress/
Ingress WKCD
- 邊界線
Site Boundary

西九龍填海區的行人基建

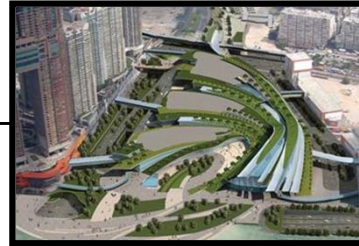
Pedestrian Infrastructure in WKRA





Proposed landscape deck above the public transport interchange may connect with the landscape deck of the Central Kowloon Route under planning to provide a segregated pedestrian corridor to WKCD

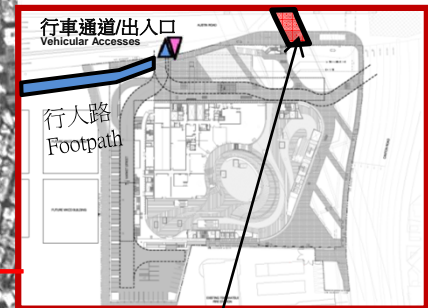
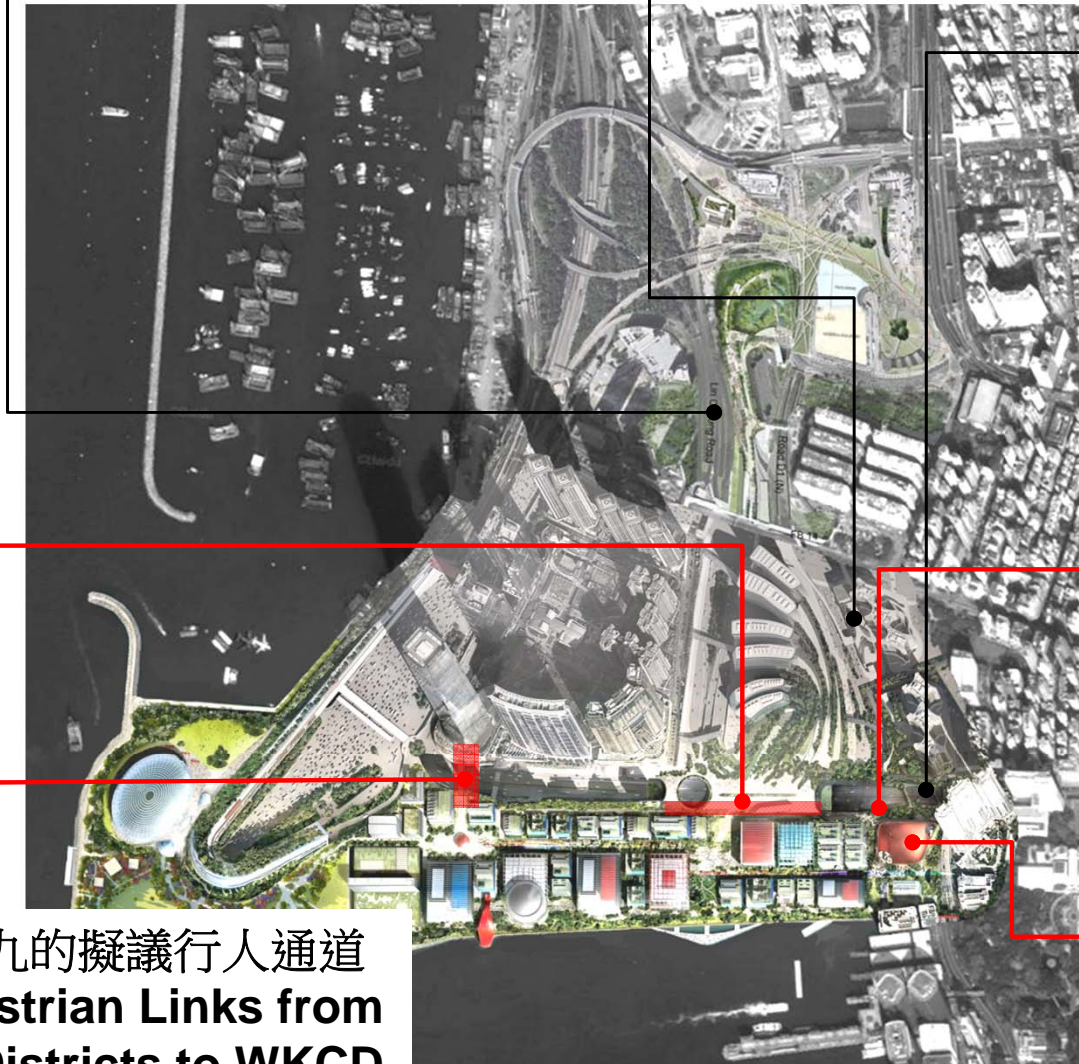
擬建的公共運輸交匯處上蓋平台花園可接駁規劃中的中九龍幹線平台花園，締造行人分隔走廊直達西九文化區



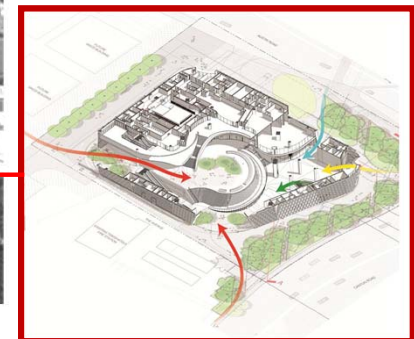
XRL West Kowloon Terminus
高鐵西九龍總站



Canton Road / Austin Road West Junction Improvement
廣東道/柯士甸道西路口改善



Austin Road Subway Connection
柯士甸道行人隧道連接



WKT Pedestrian Deck
高鐵總站的行人平台

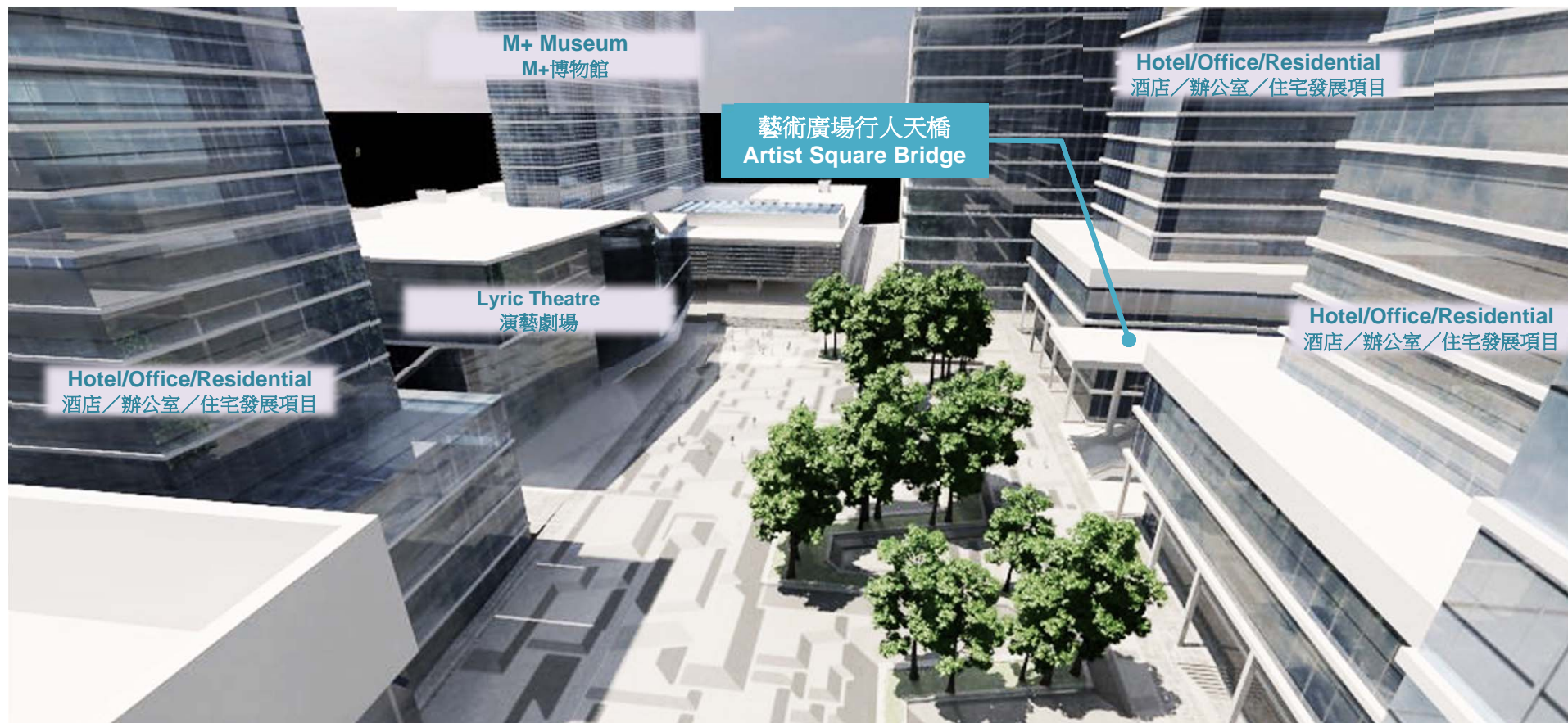
Artist Square Bridge
藝術廣場行人天橋

鄰近地區前往西九的擬議行人通道
Proposed Pedestrian Links from Neighbouring Districts to WKCD

運輸基建的進展
**Progress Update on
Transport Infrastructure**



藝術廣場行人天橋 Artist Square Bridge



- 淨寬7.5 米
7.5m clear width

- 淨空至少3.5米
Minimum 3.5m headroom

17

- 設有空調
Air conditioned

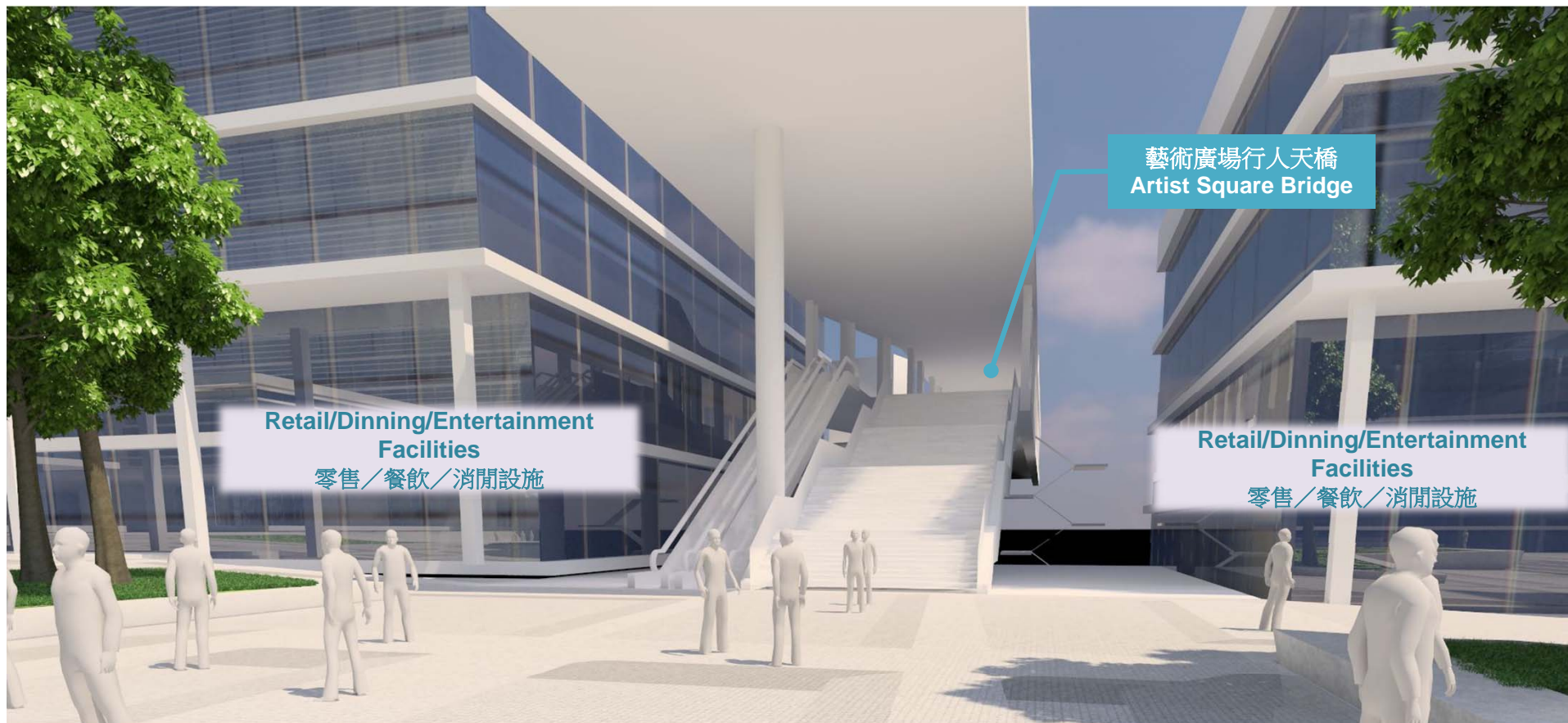
- 設有兩道扶手電梯
2 nos. of escalators

- 2018年落成
Open in 2018

廣場的佈置 (示意)
Square Configurations
(Indicative)

westKowloon
西九文化區

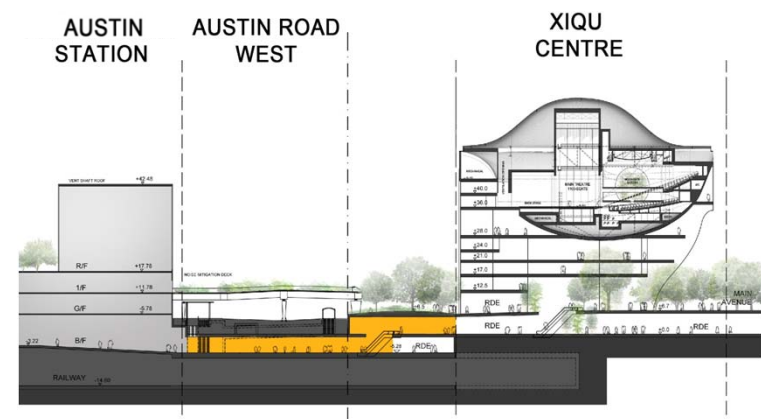
藝術廣場行人天橋 Artist Square Bridge



天橋落腳點 (示意)
Footbridge Landing (Indicative)

柯士甸道行人隧道 Austin Road Pedestrian Subway

- 地下行人通道
Underground pedestrian passage
- 至少寬10米
10m minimum clear width
- 淨空至少3.3米
Minimum 3.3m headroom
- 設有兩道扶手電梯和1座升降機
2 nos. of escalators and 1 no. of elevator
- 2018年落成
Complete in 2018



地面行車道路 At-grade Road

- 雙線雙程行車路
Dual 2 carriageway
- 3米寬行人路
3m wide footpath
- 2017年落成
Complete in 2017



交通營運計劃

Traffic Operation Plan

一個全面和跨專業的交通營運計劃，藉以管理進出西九和區內的人流與物流。

A comprehensive and multi-disciplinary traffic operation plan will be required for managing the movement of people and freight to, from and within the WKCD.

一項為期24個月的研究涵蓋

A 24-month Study covering:

- 公共運輸規劃和營運
Public Transport Planning and Operation
- 停車場和上落客貨管理安排
Car Park, Loading and Unloading Management
- 單車設施和設計
Cycling Provision and Design
- 水路交通和營運
Marine Access and Operation
- 交通控制和管理
Traffic Control and Management

公共運輸規劃和營運

Public Transport Planning and Operation

- 評估西九公共交通需求
Assess WKCD public transport demand
- 重組西九龍的公共交通
Rationalization of public transport in West Kowloon
- 未來環保巴士營運建議
Future E-bus operation proposal



公共運輸規劃和營運

Public Transport Planning and Operation

- 環保運輸系統的建議及營運模式
Environmentally friendly transport system proposal and model of operation



停車場和上落客貨管理安排

Car Park, Loading and Unloading Management

- 停車場車位需求與供應
Car park demand and supply
- 車位分享與管理機制
Car park sharing and management mechanism
- 先進的停車場管理技術及建議
New Car park management technology and proposal
- 旅遊車車位供應及管理
Coach parking provision and management
- 上落客貨的管理安排
Loading and unloading management



單車設施和設計

Cycling Provision and Design

- 由2014年4月至12月期間,使用人次有17,259
17,259 uses between April 2014 and December 2014
- 同一時間可以提供成人單車50輛,小童單車30輛
A maximum of 50 bikes for adults and 30 bikes for children can be provided at one time
- 平均租用時間: 1 小時
Average Rental Duration: 1 hour
- 超過80%的使用者表示滿意
Over 80% users satisfied with the experience



westKowloon
西九文化區

單車設施和設計

Cycling Provision and Design

- 檢討悠遊西九單車系統及提出改善建議
Review and recommend improvements to Smartbike
- 單車設施的需求及其相應的設計手冊
Need for cycling provision and the associated design guideline
- 西九區內的單車管理
Bike management within West Kowloon



水路交通和營運

Marine Access and Operation

現有的水上交通上落地點
Existing Marine Access Points



水路交通和營運

Marine Access and Operation



水路交通和營運

Marine Access and Operation

- 2014年11月22-23日自由野舉行期間,每天提供**48**班次渡輪服務
48 sailings per day provided during Freespace Fest on 22-23 November 2014
- 在灣仔、尖沙咀及油麻地避風塘提供免費渡輪服務
Free shuttle ferry ran between Wan Chai, Tsim Sha Tsui and Yau Ma Tei Typhoon Shelter

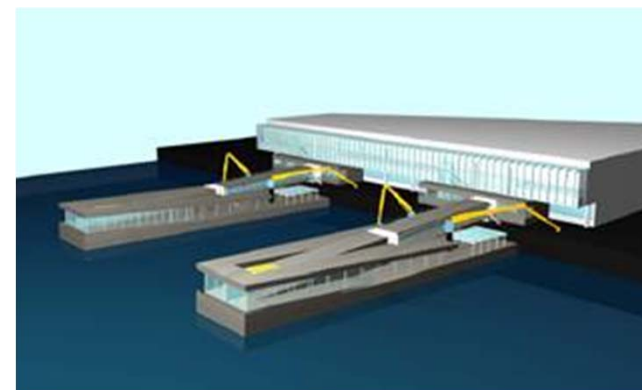


westKowloon
西九文化區

水路交通和營運

Marine Access and Operation

- 施工期間的水路交通影響評估
Marine Traffic Impact Assessment for construction phase
- 評估水路交通需求
Assess the marine traffic demand
- 建議船隻停泊／上落設施及位置
Recommend marine landing facilities and locations
- 評估船隻停泊／上落設施的技術可行性及營運方式
Assess technical feasibility and mode of operation for the marine landing facilities



交通控制和管理

Traffic Control and Management

- 建議包括公共道路和停車場在內的綜合地庫的營運模式、組織架構和人手安排
Recommend the operation mode, organization and man-power setup for managing the Integrated Basement including public roads and car parks
- 制定不同情況下的交通管理計劃
Develop the traffic management plan under various scenarios



下一步

Next Step

- 2015年下半年向議員滙報初步結果包括:
Report to Members the Preliminary Findings in the second half of 2015 including:
 - a) 公共運輸規劃和營運
Public Transport Planning and Operation
 - b) 停車場和上落客貨管理安排
Car Park, Loading and Unloading Management

- 展示行人往返公共運輸設施的電腦模擬
Simulation of Pedestrian flow to / from various public transport facilities



多謝
Thank You