

立法會民政事務委員會與發展事務委員會  
監察西九文化區計劃推行情況聯合小組委員會

Legislative Council

Panel on Home Affairs and Panel on Development  
Joint Subcommittee to Monitor the Implementation of the  
West Kowloon Cultural District Project

西九文化區公園發展及  
公眾休憩用地附例的最新進展

Update on the Park development and  
Public Open Space Bylaw of the  
West Kowloon Cultural District

西九文化區公園發展及公眾休憩用地附例的最新進展

Update on the Park development and Public Open Space Bylaw of the West Kowloon Cultural District

# 公園發展的最新進展

# UPDATE ON PARK DEVELOPMENT

# 西九公園 WKCD Park

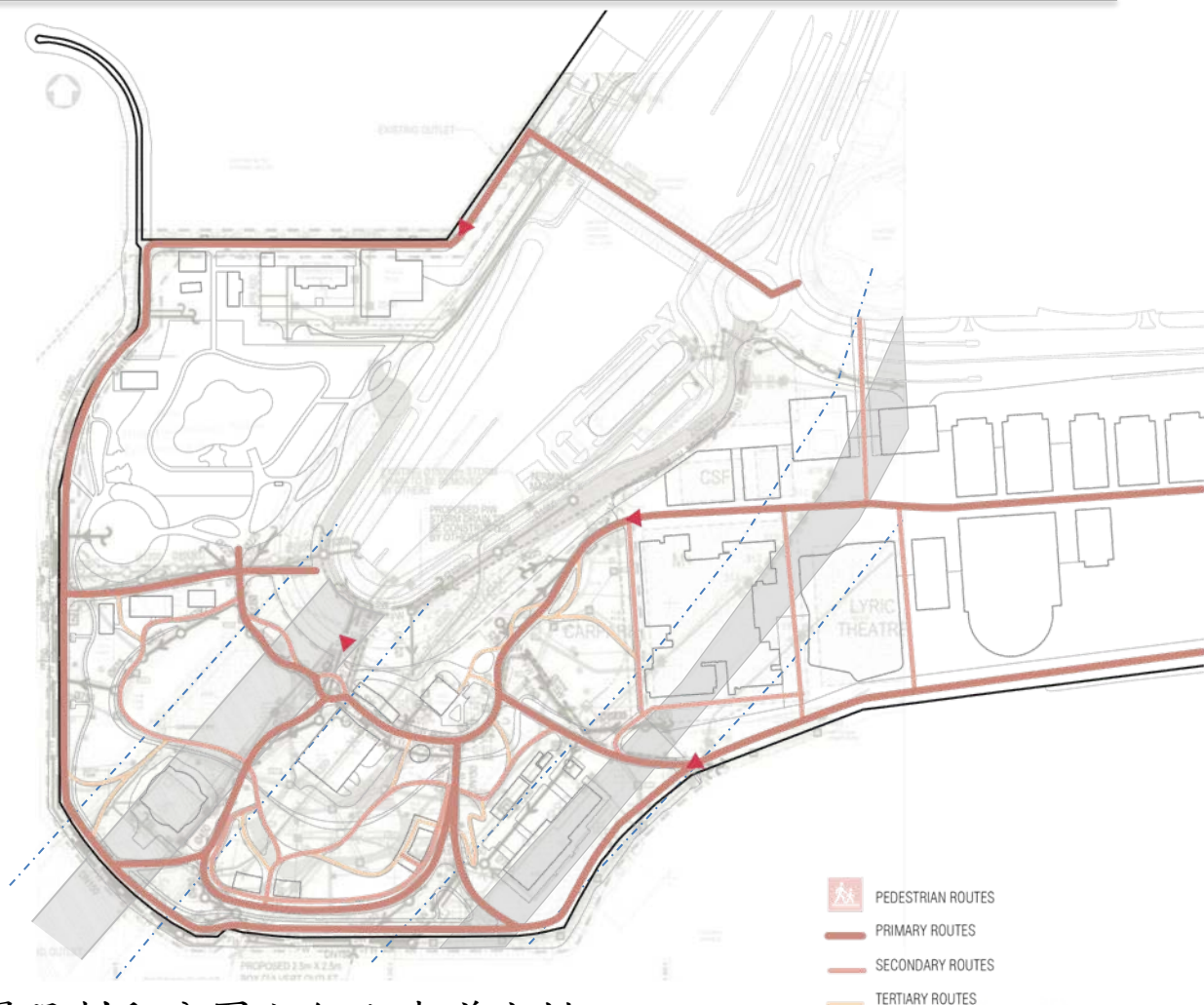
## LEGEND 圖例

- |                             |        |
|-----------------------------|--------|
| 1 CULTURAL BOULEVARD        | 文化大道   |
| 2 ARTS PAVILION             | 小型藝術展館 |
| 3 BLACK BOX                 | 黑盒劇場   |
| 4 OUTDOOR STAGE             | 戶外舞台   |
| 5 THE LAWN                  | 大型草坪   |
| 6 SMALL LAWN                | 小型草坪   |
| 7 SLOPING LAWN              | 斜草坪    |
| 8 WATERFRONT EVENT LAWN     | 海濱活動草坪 |
| 9 WATERFRONT PROMENADE      | 海濱長廊   |
| 10 DOUBLE EDGED DESIGN      | 雙層設計   |
| 11 WHC VENTILATION BUILDING | 西隧通風大樓 |
| 12 MTR VENTILATION BUILDING | 港鐵通風大樓 |
| 13 TEMPORARY NURSERY PARK   | 臨時苗圃公園 |



# 西九公園

## WKCD Park

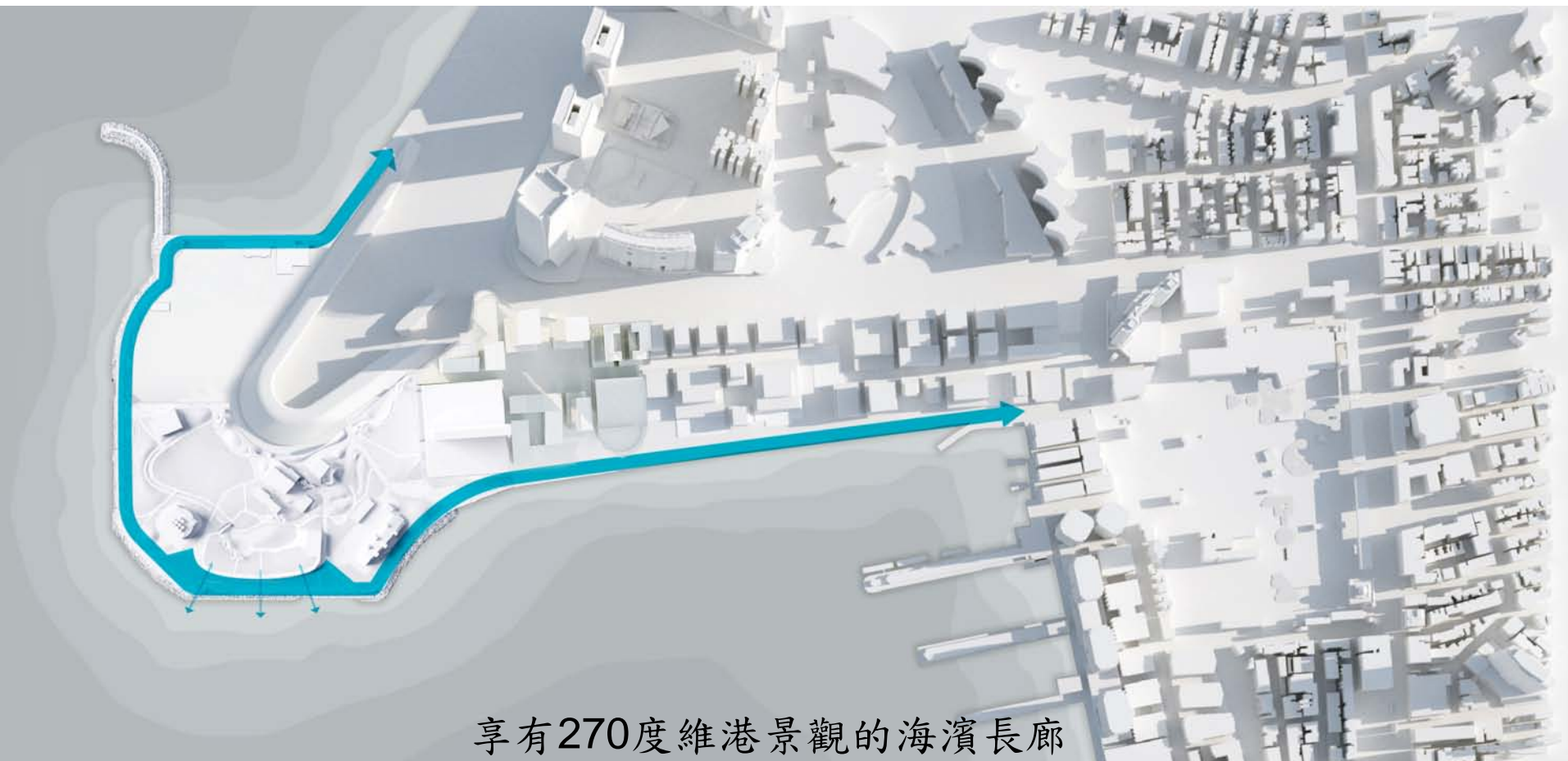


現場限制和公園內行人步道安排

Site constraints and pedestrian routes within the Park

# 西九公園

## WKCD Park



享有270度維港景觀的海濱長廊

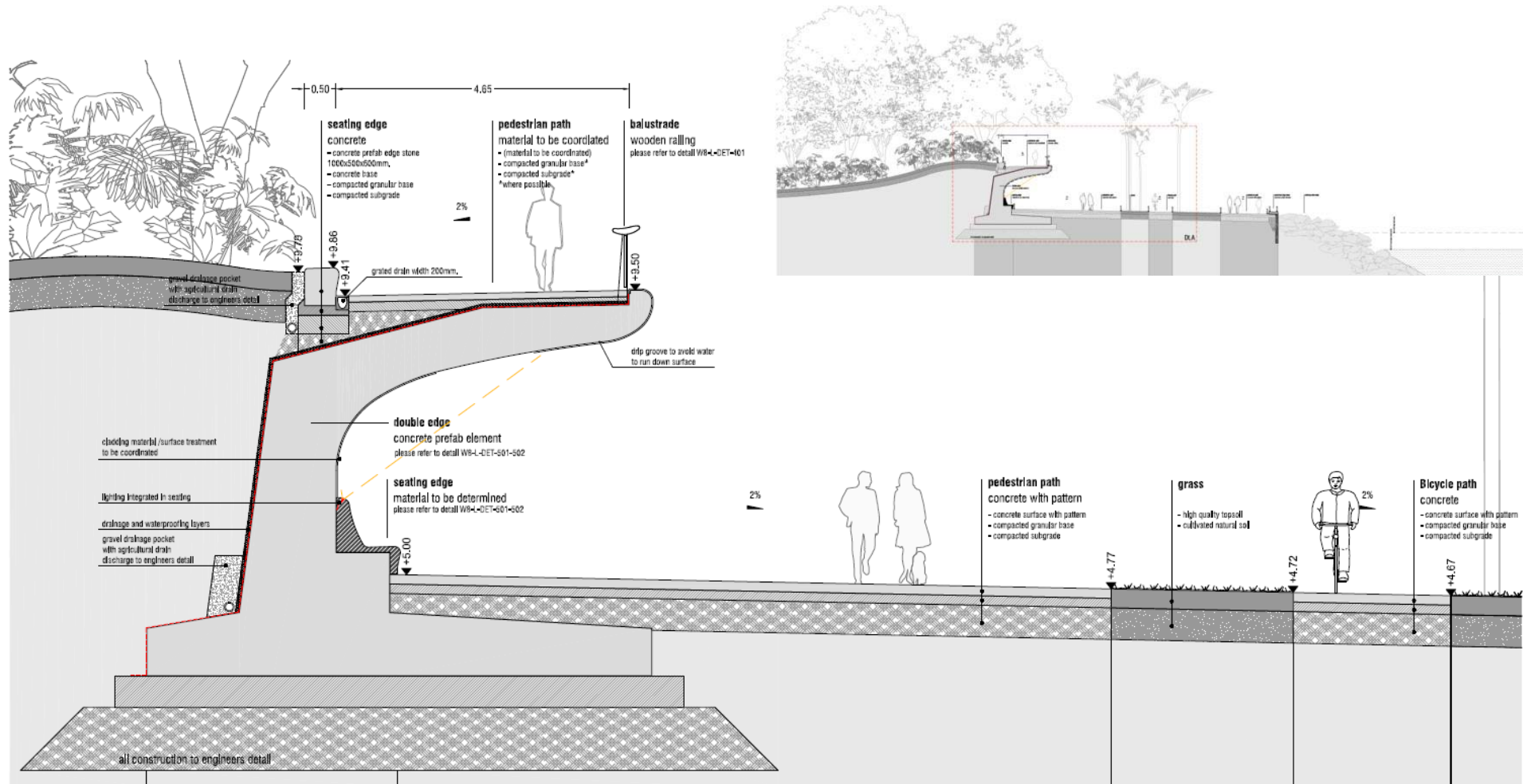
Continuous waterfront promenade celebrating 270° vistas of the Victoria Harbour

**westKowloon**

西九文化區

# 西九公園

## WKCD Park



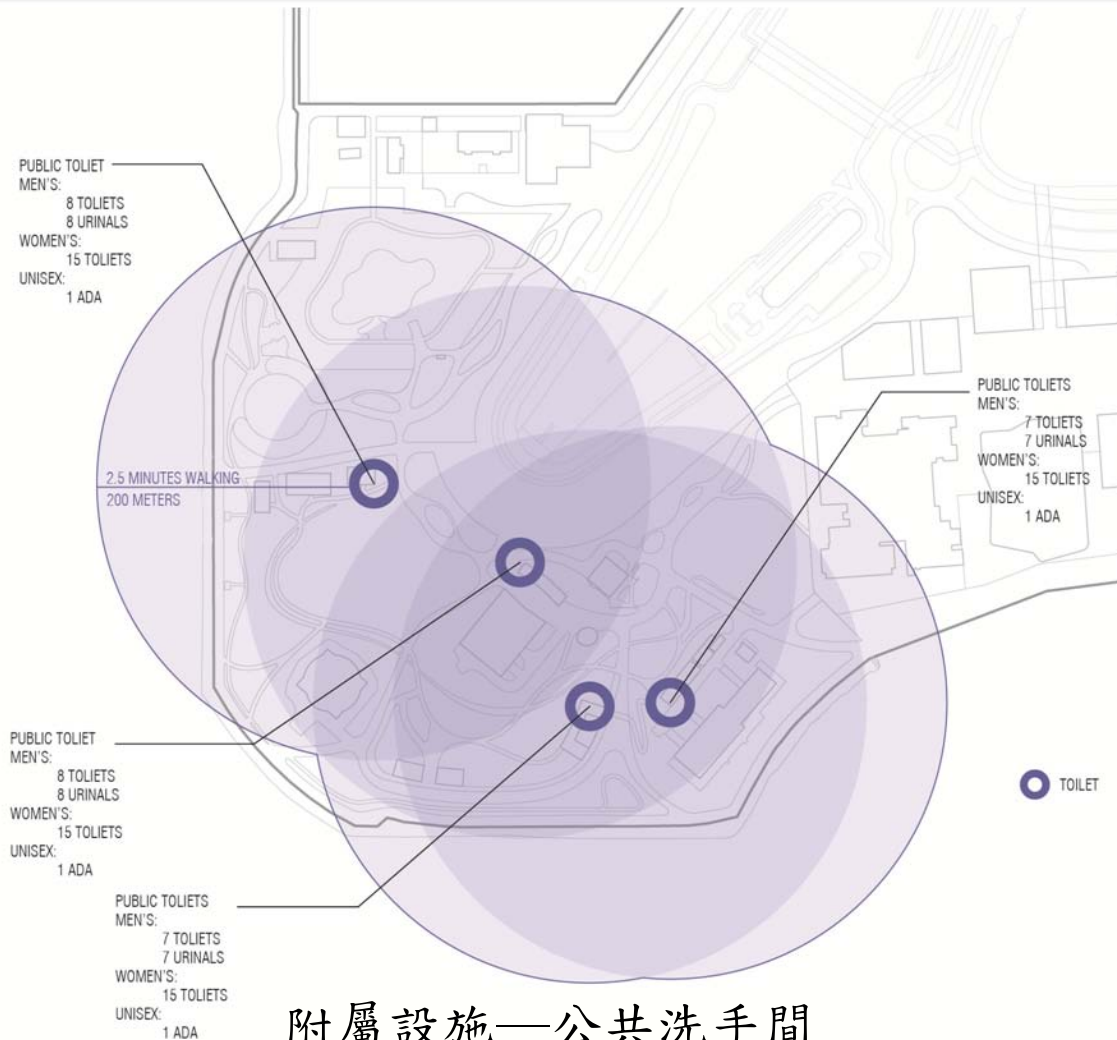
Detail A Watercrest detail at double edge (revised), scale 1:25

雙層設計剖面圖

Section of Double Edge Design

# 西九公園

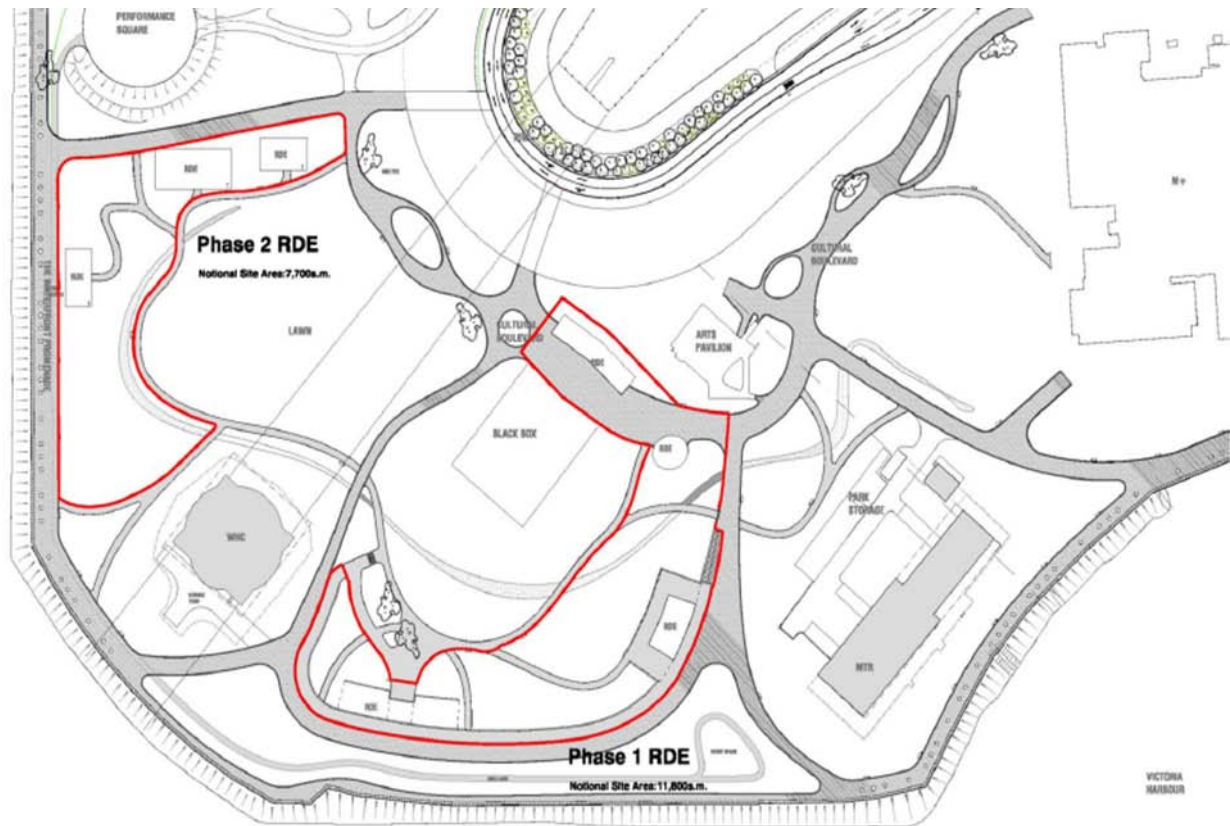
## WKCD Park



附屬設施—公共洗手間  
 Ancillary facility – Public toilets

# 西九公園

## WKCD Park



公園內的零售/餐飲/消閒設施  
Retail/ dining/ entertainment in the Park



# 西九公園

## WKCD Park

---



# 西九公園

## WKCD Park

---



# 西九公園

## WKCD Park



# 西九公園

## WKCD Park



# 苗圃公園

## Nursery Park



# 苗圃公園

## Nursery Park

### LEGEND

- Lawn Area 草地
- Shrubs Area 灌木
- Groundcover 矮小植物
- Q Movable chair 可移動椅子



西九文化區公園發展及公眾休憩用地附例的最新進展

Update on the Park development and Public Open Space Bylaw of the West Kowloon Cultural District

**西九文化區公眾休憩用地附例**

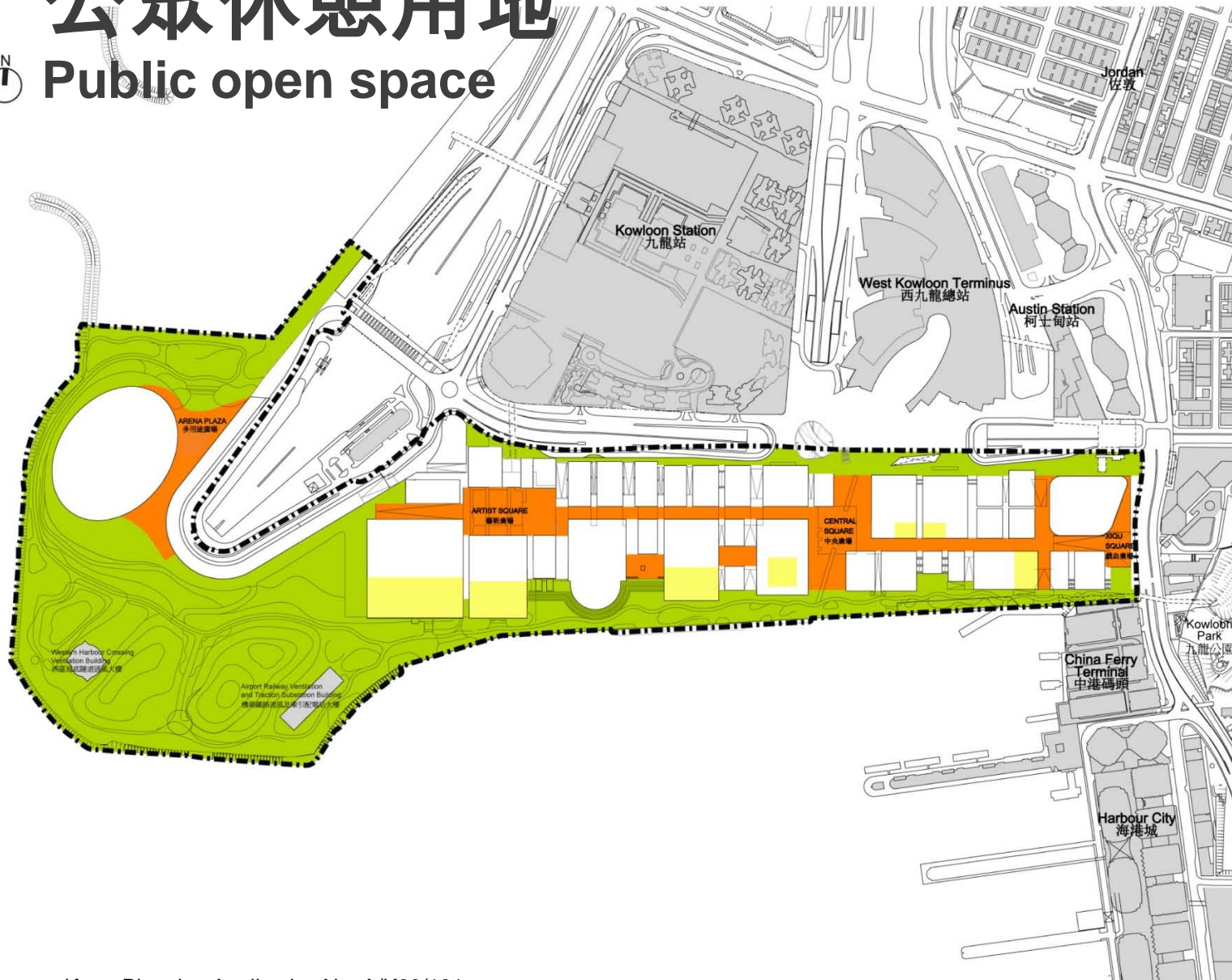
**WKCD PUBLIC OPEN SPACE BYLAW**

- 《西九文化區管理局條例》賦予管理局權力訂立附例  
The WKCDA Ordinance empowers WKCDA to make bylaws.
- 附例須經立法會批准  
The Bylaw is subject to LegCo approval.
- 附例將適用於西九文化區內所有「公眾休憩用地」  
The Bylaw will apply to all “public open spaces” within WKCD.



# 公眾休憩用地

## Public open space



### LEGEND 圖例

Total Public Open Space not less than 23 ha  
公共休憩用地總面積不少於23公頃

Public Open Space Distribution  
公共休憩用地分佈

- At Grade (not less than 15ha)  
地面 (不少於15公頃)
- Plaza (not less than 3ha)  
廣場 (不少於3公頃)
- Terrace Garden  
平台花園
- Existing / Proposed Building  
現有/擬議的建築
- Site Boundary  
邊界線

Applicant  
**WEST KOWLOON  
CULTURAL DISTRICT AUTHORITY**



西九文化區管理局  
West Kowloon Cultural District Authority



Project  
**SECTION 16 PLANNING APPLICATION  
FOR PROPOSED MINOR RELAXATION  
OF GROSS FLOOR AREA AND  
BUILDING HEIGHT RESTRICTIONS  
FOR WEST KOWLOON CULTURAL  
DISTRICT, HONG KONG**

Title  
**Public Open Space Plan**

# 基本理念

## General Philosophy

- 公共空間的使用應盡量開放和自由  
Use of public spaces to be as free and open as possible.
- 管理局需有最低程度的權力以自行管理公園和其他公眾休憩用地  
WKCDA needs minimum powers so it can manage the Park and open spaces itself.



# 附例的最新進展

## Bylaw: Progress to date

- 借鑑本地和海外的公園、遊樂場地和主題樂園的附例或規例和管理經驗  
Review of bylaws or regulations and management practice of local and overseas parks, pleasure grounds and places of amusement



# 公園的願景和使命

## Park vision and mission

- 附例反映了：

Bylaw drafting reflects:

- 公園的**願景**：締造令香港引以為傲的優質綠化戶外空間

**vision** for the Park: “a quality green open space that would make Hong Kong proud.”

- 公園的**使命**：成為啟發、推動和鼓勵文化活動的海濱公園

**mission** for the Park : “a waterfront park to inspire, promote and encourage cultural pursuits for all.”



願景  
VISION

使命  
MISSION

- 管理局在草擬附例時參考了在以下活動收集的公眾意見：
  - 2009年至2011年三階段公眾參與活動；
  - 2014年5至6月「西九公園 人人共享—『如何管理將來的西九公園』公眾意見調查」，包括問卷調查和專題小組討論

WKCD has taken into account views expressed by the public during three-stage public engagement exercise between 2009 and 2011, and a public survey on Park management comprising questionnaires and focus group discussions in May to June 2014.

# 附例和指引概要

## Overview of Bylaw and Guidelines

---

- 附例賦予管理局相關的權力，而指引則提供執行上的詳情  
The Bylaw gives WKCDA the relevant power while guidelines provide the operating details.
- 使用語意正面的告示牌  
Signage to be encouraging

# 語意正面和友善的告示牌

Example of user-friendly signage



# 語意正面和友善的告示牌

Example of user-friendly signage



盡量避免使用這種標示  
Signage to be avoided



# 進出與節目

## Access & Events

### 附例 Bylaw

管理局可以因應節目或其他需要關閉若干區域

WKCD may close off areas for events or as necessary for other reasons.

### 指引 Guidelines

- 在舉行戶外節目與市民日常享用公園和其他休憩用地之間應取得適當平衡  
Strike a proper balance between special events and daily use of the park and public areas for other patrons.
- 文化藝術節目與公眾節目優先  
Priority is given to arts and cultural events, and public events.



# 街頭表演

## Street Performance

### 附例 Bylaw

在管理局同意下可進行街頭表演

Street performances with WKCDA's permission

### 指引 Guidelines

- 鼓勵街頭表演者、商戶和其他使用者互相合作和尊重

Encourage co-operation and mutual respect between street performers, businesses and other users

- 街頭表演者需向管理局申領許可證  
All street performers require a valid permit from WKCDA

- 「西九文化區街頭表演者」計劃，為專業表演者而設  
“West Kowloon Street Performer Programme” for accomplished performers



# 拍攝及攝影

## Filming & Photography

### 附例 Bylaw

在管理局准許下可進行商業拍攝  
或攝影

Filming / photography for commercial purposes  
with WKCDA's permission

### 指引 Guidelines

有意在西九進行拍攝及攝影的人士，  
可根據指引進行申請

Follow guidelines to apply for filming or photography in the district



# 公眾行為

## Public conduct

- 只會因安全考慮對公眾行為施以最低程度的規限  
Minimum regulations on public conduct for safety considerations
- 除非另有告示，球類活動、踏單車等均可進行  
Ball games, bicycle riding etc permitted unless notified otherwise
- 容許放風箏，但須遵守若干基於安全而定的規限  
Flying kites allowed within certain restrictions required on safety grounds



# 保護環境

## Protection of environment

附例中有以下相關條文：

Relevant provisions in the Bylaw

- 拋棄垃圾、損壞設施、保護植物和動物  
littering, damage to facilities, protection of flora and fauna
- 銷售貨品或服務、行乞  
selling of goods or services, begging



- 寵物可內進，但必須受約束

Domestic pets are permitted so long as kept under control



# 車輛和交通

## Vehicles & Transport

- 只限授權車輛和交通工具進入  
No cars/ vehicles unless authorised
- 公共交通  
Public transport access



- 違例者可被罰款  
(罰款由第一至第三級)

Contravention may attract a fine  
(Fine ranges from level 1 to level 3)



- 違例者可能被要求出示身份證明

Offenders may be required to provide proof of identity

- 管理局可要求某人離開、前往管理局辦公室或警局

WKCDA may require a person to leave, attend the Authority's office or a police station

- 管理局可拘留違例者直至警方到場

WKCDA may detain an offender until police arrive.

# 徵詢持份者意見

## Stakeholder engagement

---

- 油尖旺區議會  
Yau Tsim Mong District Council
- 西九管理局諮詢會（來自不同界別代表）  
WKCD A Consultation Panel (representatives from different sectors)
- 十八區區議會  
18 District Councils
- 文化藝術團體  
Arts and cultural groups
- 本地街頭表演者  
Local street performers
- 鄰近居民代表  
Representatives of nearby residents

- 繼續聽取持份者和公眾意見  
Continue to listen to views from different stakeholders and the public
- 修訂擬議附例並提交立法會審議  
Refine the draft Bylaw before introducing to LegCo for positive vetting
- 修訂擬議指引並於公園啟用時推行  
Refine the draft guidelines for implementation upon the Park opening

謝 謝  
Thank You