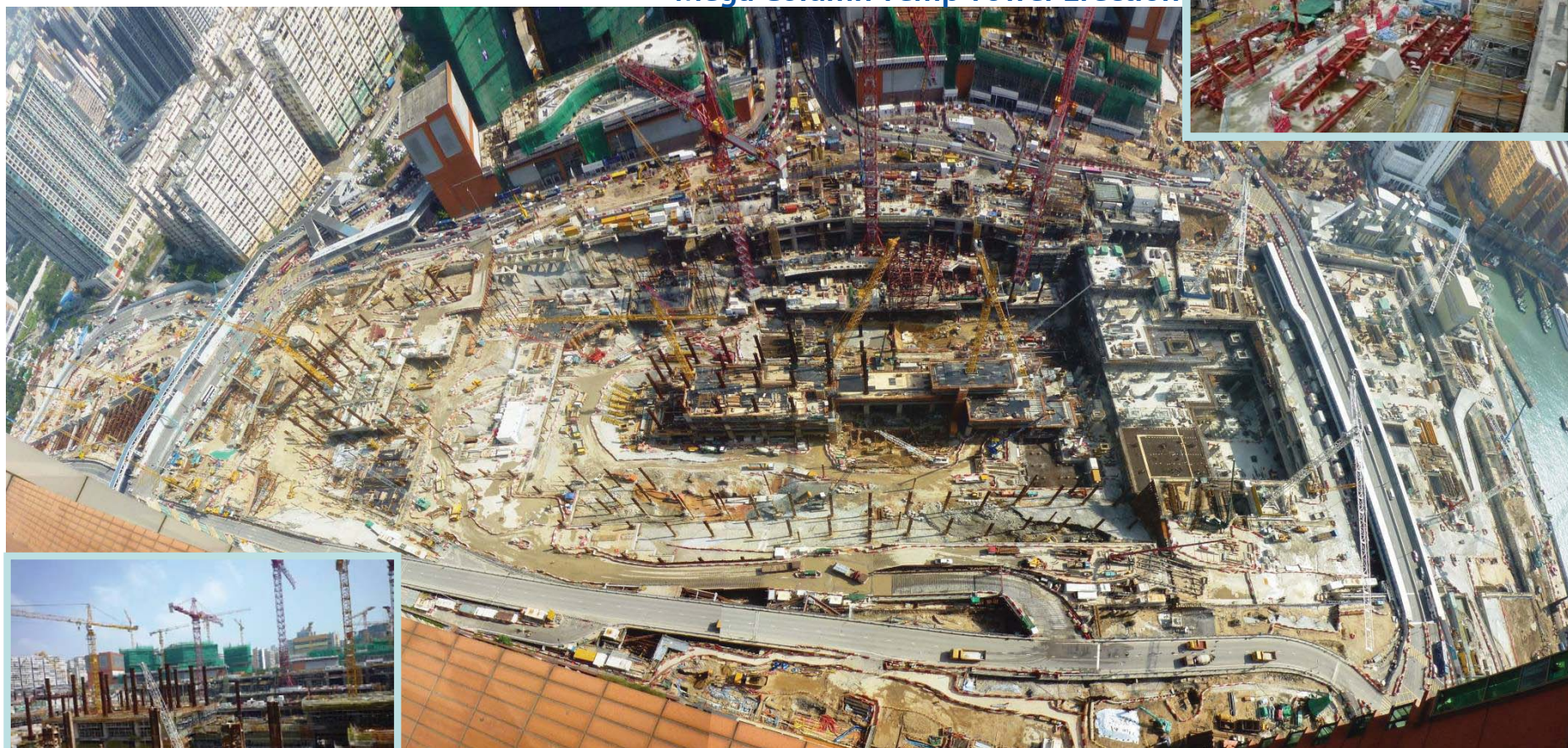


高鐵總站北（主要工地）

West Kowloon Terminus North (Core Area)

安裝主柱臨時支撐架

Mega Column Temp Tower Erection



由下而上建造總站主體

Main Station Bottom-up Construction

MTR Corporation

2013/11/22

Page 12



Source: Paper submitted by the MTR Corporation Limited to the Subcommittee on Matters Relating to Railways, LC Paper No. CB(1)392/13-14(02)