

立法會發展事務委員會會議
Legislative Council Panel on Development



大嶼山發展策略建議

Proposed Development Strategy for Lantau



發展局
2016年2月23日

Development Bureau
23 February 2016

大嶼山發展

Lantau Development

- 平衡並加強發展和保育，使大嶼山成為一個宜居、宜業、宜商、宜樂及宜學的智慧型、低碳社區
- 地利優勢 — 國際及區域「雙門戶」
- To develop Lantau into a smart, low-carbon community for living, work, business, leisure and study while balancing and enhancing development and conservation
- The Geographical Edge: International and Regional Gateway



空間規劃及土地利用

Spatial Planning and Land Use

北大嶼山走廊
策略性經濟及房屋

North Lantau Corridor
Strategic Economic and Housing Development

東北大嶼山匯點
休閒、娛樂及旅遊

North-eastern Lantau Node
Leisure, Entertainment and Tourism

大嶼山大部分地區作
保育、休閒、文化及
綠色旅遊

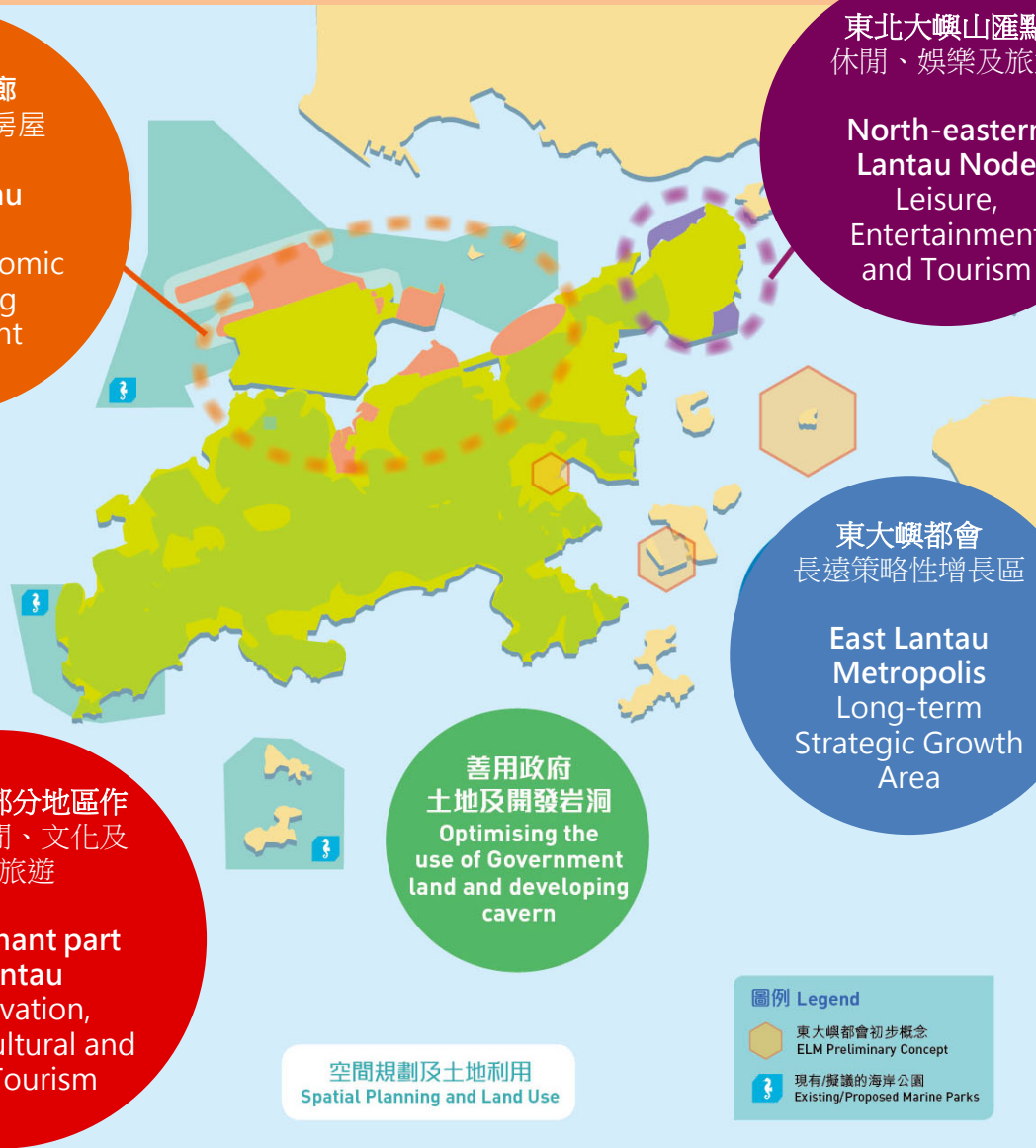
Predominant part
of Lantau
Conservation,
Leisure, Cultural and
Green Tourism

善用政府
土地及開發岩洞

Optimising the
use of Government
land and developing
cavern

東大嶼都會
長遠策略性增長區

East Lantau Metropolis
Long-term
Strategic Growth
Area



空間規劃及土地利用
Spatial Planning and Land Use

圖例 Legend

- 東大嶼都會初步概念
ELM Preliminary Concept
- 現有/擬議的海岸公園
Existing/Proposed Marine Parks

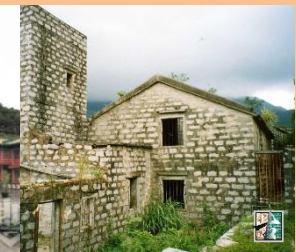
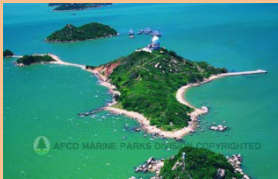
自然及文物保育

Nature and Heritage Conservation



加強 保育 Enhance Conservation

- ◆ 避免在有保育價值的地點或周圍作大型發展
- ◆ 提升郊野公園生態價值，例如：植樹
- ◆ 對法定古跡和其他具有文物價值地點進行復修、保護和保育
- ◆ 推進擬議海岸公園的工作
- ◆ Avoid large-scale development at conservation sites & surrounding areas
- ◆ Enhance ecological value of country parks, e.g. tree planting
- ◆ Restoration, preservation and conservation of declared monuments and other sites of conservation value
- ◆ Take forward the implementation of Marine Parks



自然及文物保育

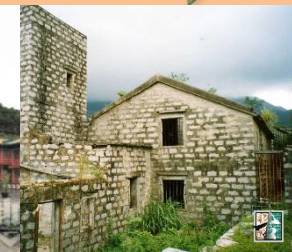
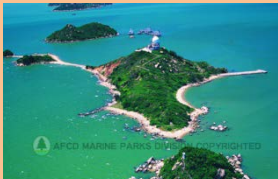
Nature and Heritage Conservation



善用 資源

Better
Utilization of
Natural
Resources

- ◆ 發揮自然環境的教育、康樂及綠色旅遊潛力
- ◆ 提供多樣化及創新的設施，增加郊野公園的吸引力及教育價值
- ◆ 透過「點、線、面」的方法，串連具保育價值地點，吸引遊人，推廣生態、文化旅遊及教育
- ◆ 在文物較集中的地區，考慮發展成為歷史文物區，彰顯個別地點的文物價值
- ◆ Optimizing the potential of sites of conservation value for nature conservation, recreation & green tourism
- ◆ Provide diversified and innovative facilities to increase the attractiveness and education value of country parks
- ◆ Through “point-line-plane” approach, link up places of conservation value to attract visitors and to promote ecological, cultural tourism and education
- ◆ Consider theming area with lots of heritage into a local historic heritage district to manifest the heritage value of individual site



策略性交通運輸基建

Strategic Traffic and Transport Infrastructure



圖例 Legend

- A. 北大嶼山和屯門之間的可能鐵路連接 Possible Rail Link between North Lantau and Tuen Mun
- B. 香港口岸人工島和機場島北商業區之間的可能交通接駁 Possible Transport Connection between Hong Kong Boundary Crossing Facilities Island and North Commercial District on Airport Island
- C. 香港口岸人工島和北大嶼山之間的可能鐵路連接 Possible Rail Link between Hong Kong Boundary Crossing Facilities Island and North Lantau
- D. 屯門至赤鱘角連接路 Tuen Mun — Chek Lap Kok Link
- E. 梅窩和北大嶼山之間的可能鐵路/公路連接 Possible Rail/Road Links between Mui Wo and North Lantau
- F. 經大嶼山東北部連接東大嶼都會及新界西北的可能公路連接 Possible Road between East Lantau Metropolis and Northwest New Territories via Northeast Lantau
- G. 東大嶼都會和西九龍之間的可能鐵路連接 Possible Rail Link between East Lantau Metropolis and Kowloon West
- H. 東大嶼都會和港島西之間的可能鐵路/公路連接 Possible Rail/Road Links between East Lantau Metropolis and Hong Kong Island West

- 建議探討的鐵路走廊 Possible Rail Corridor for Further Examination
- 建議探討的公路走廊 Proposed Road Corridor for Further Examination
- 建議探討的海上交通 Possible Marine Traffic for Further Examination
- 東大嶼都會的初步概念 ELM Preliminary Concept
- 郊野公園 Country Park
- 現有的碼頭 Existing Pier Facilities
- 可能的碼頭 Possible Pier Facilities

康樂及旅遊建議

Recreation and Tourism Proposals



- 多元化的康樂及旅遊目的地
- 5個主題及14個康樂及旅遊地點
- 體驗性交通連結
- Kaleidoscopic Recreation and Tourism Destination
- 5 themes of recreation and tourism in 14 areas
- Experiential transport connection



社會發展策略建議

Social Development Strategy

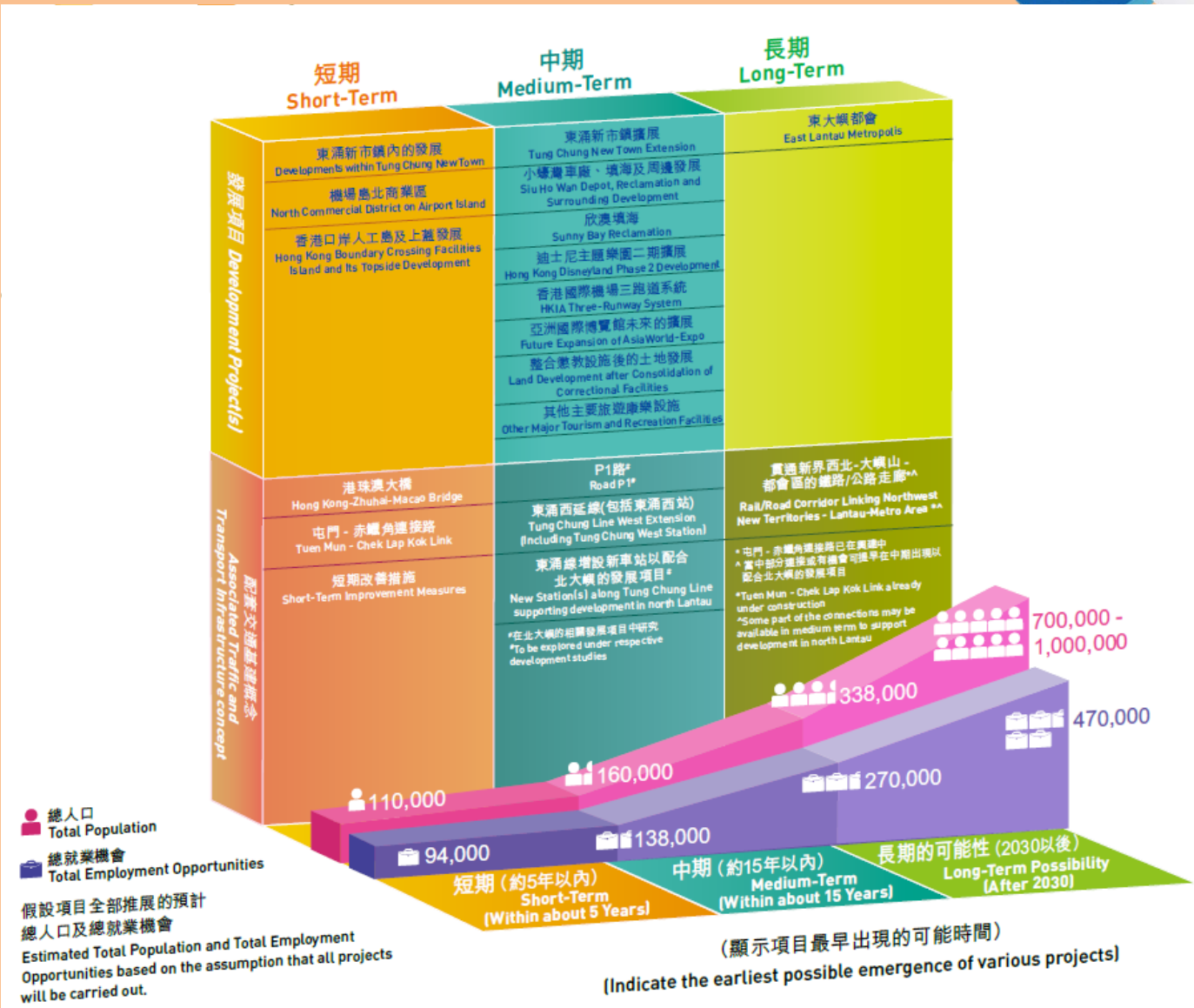


- 吸引及薈萃人才
 - ✓ 現代化低碳優質及智慧城市
 - ✓ 改善現有社區設施
 - ✓ 增加不同類型教育服務
 - ✓ 提供支援年青人及幼童服務
- 提供適當區內外交通
- 顧及鄉郊地區需要
- Attracting & gathering talents
 - ✓ Low-carbon, high-quality and modern smart city
 - ✓ Enhance existing community facilities
 - ✓ Diversify education services
 - ✓ Provide youth and children services
- Providing appropriate transport infrastructure inside and outside the district
- Catering to needs of rural and remote areas



概略時序

Broad Timeline



● 總人口
 Total Population
 ● 總就業機會
 Total Employment Opportunities
 假設項目全部推展的預計
 總人口及總就業機會
 Estimated Total Population and Total Employment
 Opportunities based on the assumption that all projects
 will be carried out.

大嶼山發展

Lantau Development



- 今年上半年諮詢公眾，隨後推出大嶼山發展藍圖
- Public engagement activities in the first half of 2016 and then promulgating Lantau Development blueprint