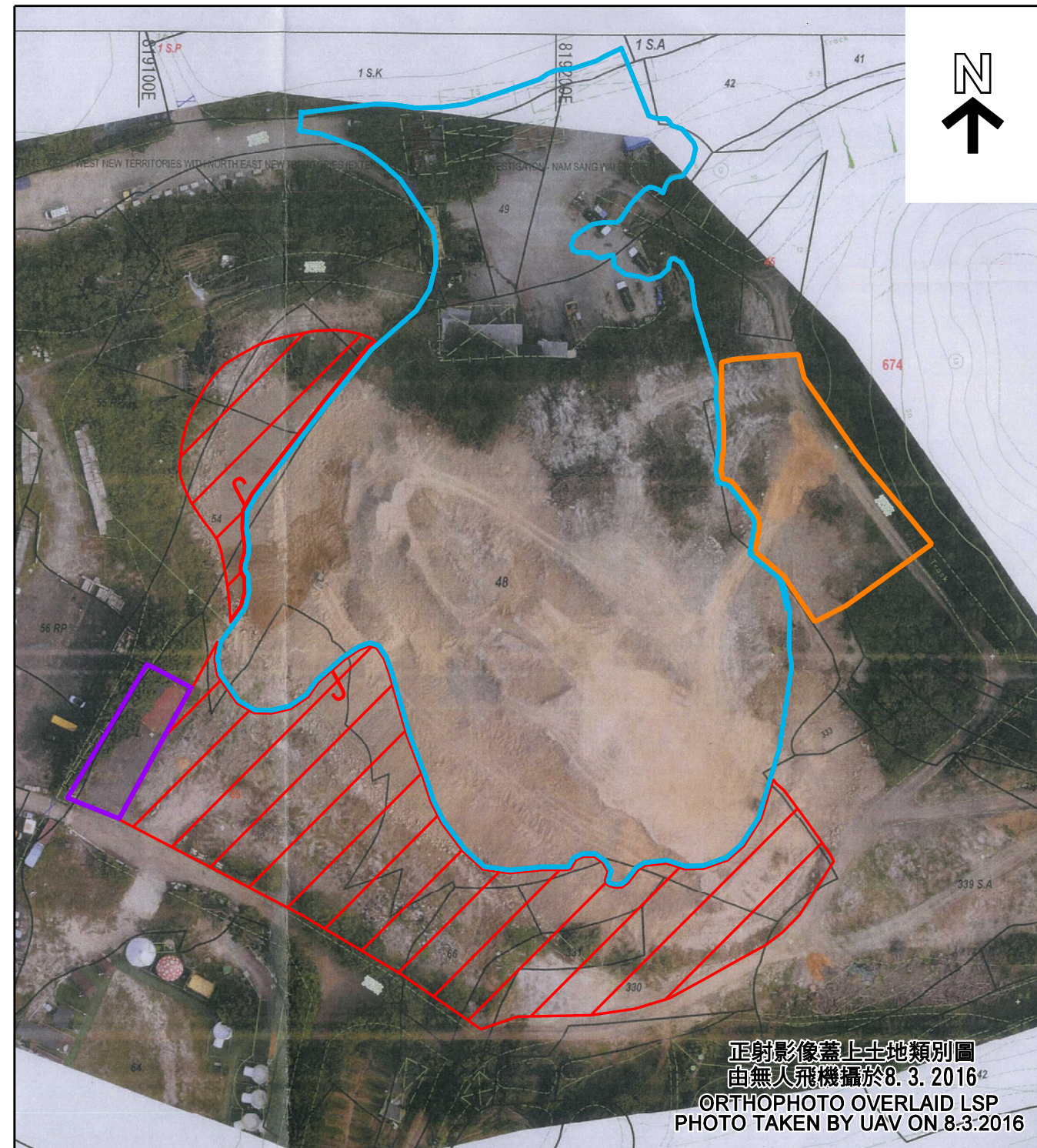
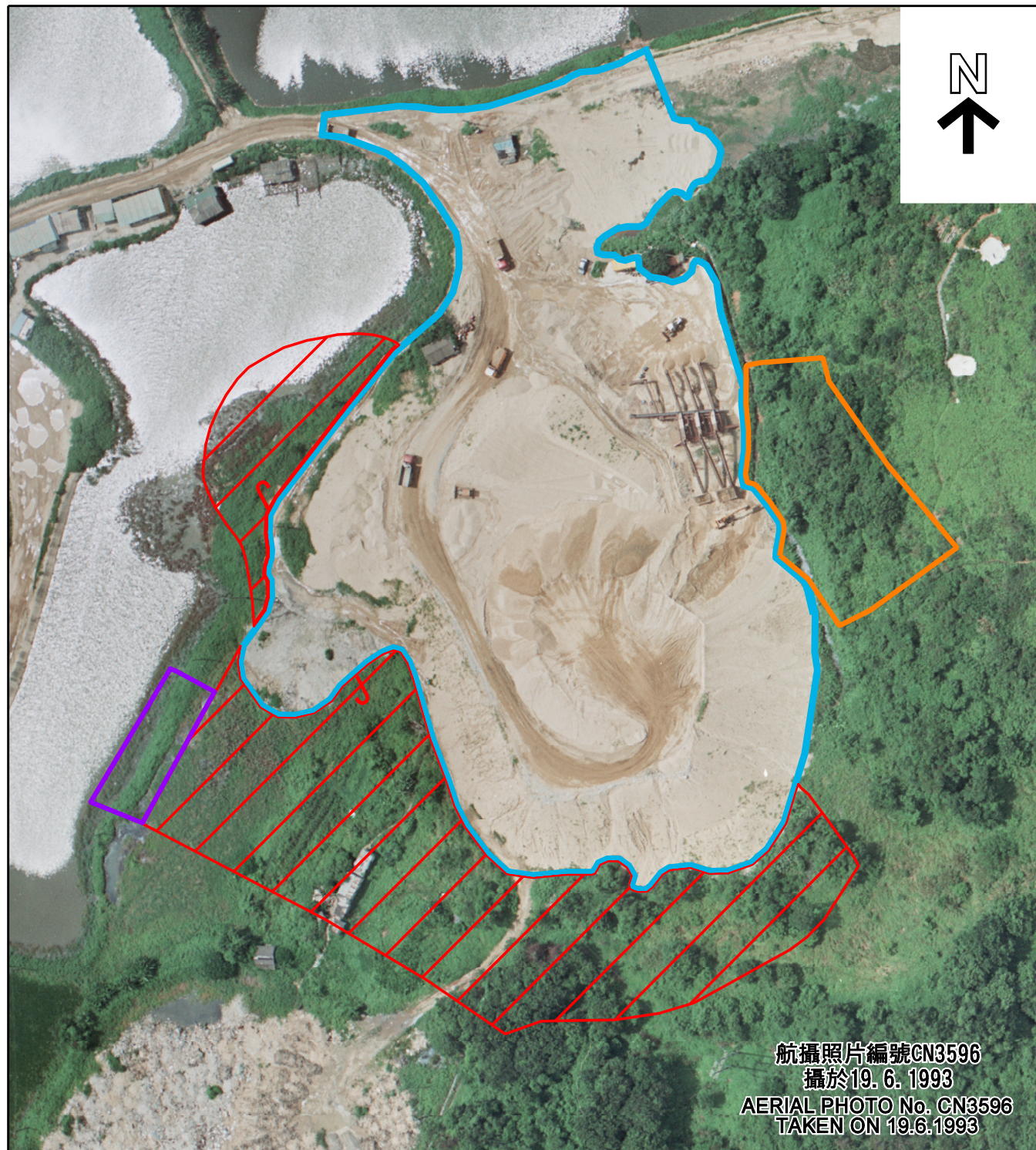


天水圍嘉湖山莊附近堆積泥頭地點 LOCATION OF SOIL FILL NEAR KINGSWOOD VILLAS IN TIN SHUI WAI




圖例 LEGEND

 露天存放泥沙界線(19. 6. 1993)
BOUNDARY OF OPEN STORAGE
OF SAND ON 19.6.1993

 強制執行通知書的界線(於6. 4. 2016發出
及6. 6. 2016屆滿)
BOUNDARY OF ENFORCEMENT NOTICE
ISSUED ON 6.4.2016
(EXPIRED ON 6.6.2016)

 強制執行通知書的界線(於21. 3. 2016發出及28. 3. 2016屆滿)
恢復原狀通知書於19. 4. 2016發出(19. 7. 2016屆滿)
BOUNDARY OF ENFORCEMENT NOTICE
ISSUED ON 21.3.2016 (EXPIRED ON 28.3.2016)
REINSTATEMENT NOTICE
ISSUED ON 19.4.2016 (EXPIRED ON 19.7.2016)

 強制執行通知書的界線(於6. 4. 2016發出
及13. 4. 2016屆滿)
BOUNDARY OF ENFORCEMENT NOTICE
ISSUED ON 6.4.2016
(EXPIRED ON 13.4.2016)