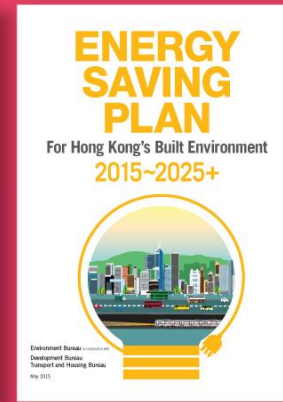
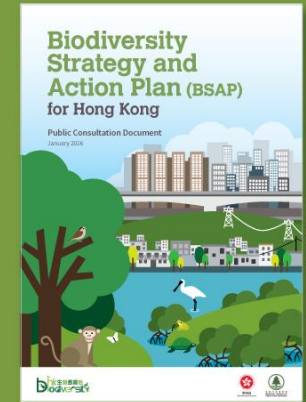


POLICY ADDRESS 2016

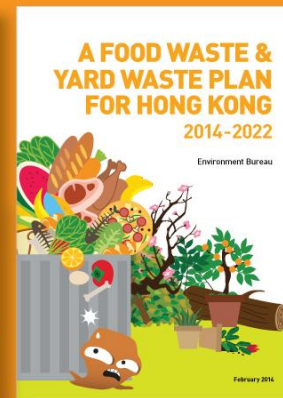


CLIMATE CHANGE AND ENERGY



NATURE CONSERVATION

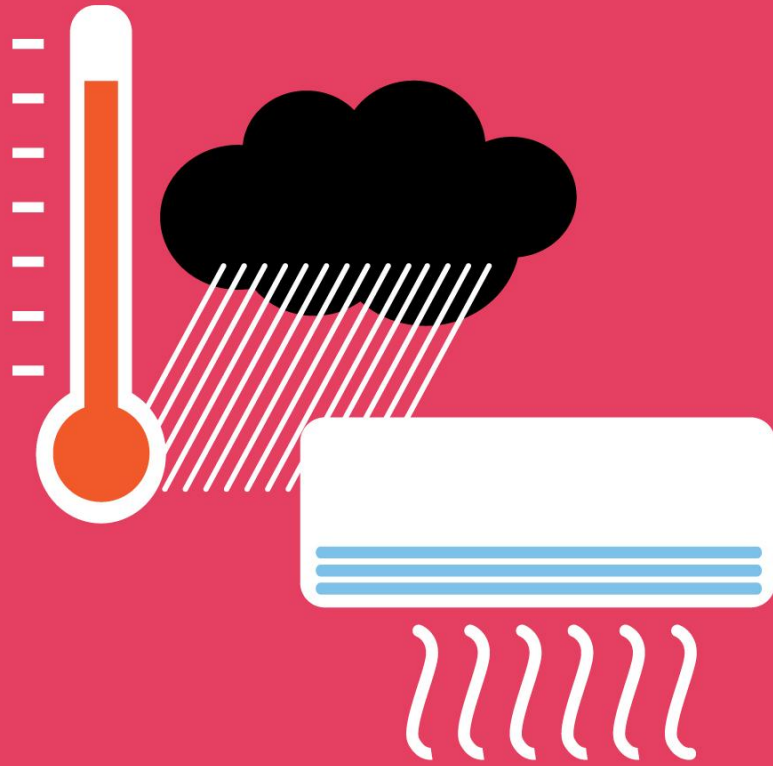
WASTE MANAGEMENT



ENVIRONMENTAL QUALITY



環境局
Environment
Bureau



COP21 · CMP11
PARIS 2015
UN CLIMATE CHANGE CONFERENCE

CLIMATE CHANGE AND ENERGY



United Nations

FCCC/CP/2015/L.9



Framework Convention on
Climate Change

Distr.: Limited
12 December 2015

Original: English

Conference of the Parties

Twenty-first session

Paris, 30 November to 11 December 2015

Agenda item 4(b)

Durban Platform for Enhanced Action (decision 1/CP.17)

Adoption of a protocol, another legal instrument, or an

agreed outcome with legal force under the Convention

applicable to all Parties

ADOPTION OF THE PARIS AGREEMENT

Proposal by the President

Draft decision -/CP.21

The Conference of the Parties,

Recalling decision 1/CP.17 on the establishment of the Ad Hoc Working Group on the Durban Platform for Enhanced Action,

Also recalling Articles 2, 3 and 4 of the Convention,

Further recalling relevant decisions of the Conference of the Parties, including decisions 1/CP.16, 2/CP.18, 1/CP.19 and 1/CP.20,

Welcoming the adoption of United Nations General Assembly resolution A/RES/70/1, "Transforming our world: the 2030 Agenda for Sustainable Development", in particular its goal 13, and the adoption of the Addis Ababa Action Agenda of the third International Conference on Financing for Development and the adoption of the Sendai Framework for Disaster Risk Reduction,

Recognizing that climate change represents an urgent and potentially irreversible threat to human societies and the planet and thus requires the widest possible cooperation by all countries, and their participation in an effective and appropriate international response, with a view to accelerating the reduction of global greenhouse gas emissions,

Also recognizing that deep reductions in global emissions will be required in order to achieve the ultimate objective of the Convention and emphasizing the need for urgency in addressing climate change,

Acknowledging that climate change is a common concern of humankind, Parties should, when taking action to address climate change, respect, promote and consider their respective obligations on human rights, the right to health, the rights of indigenous peoples,

GE.15-21930(E)
"1521930"

Please recycle

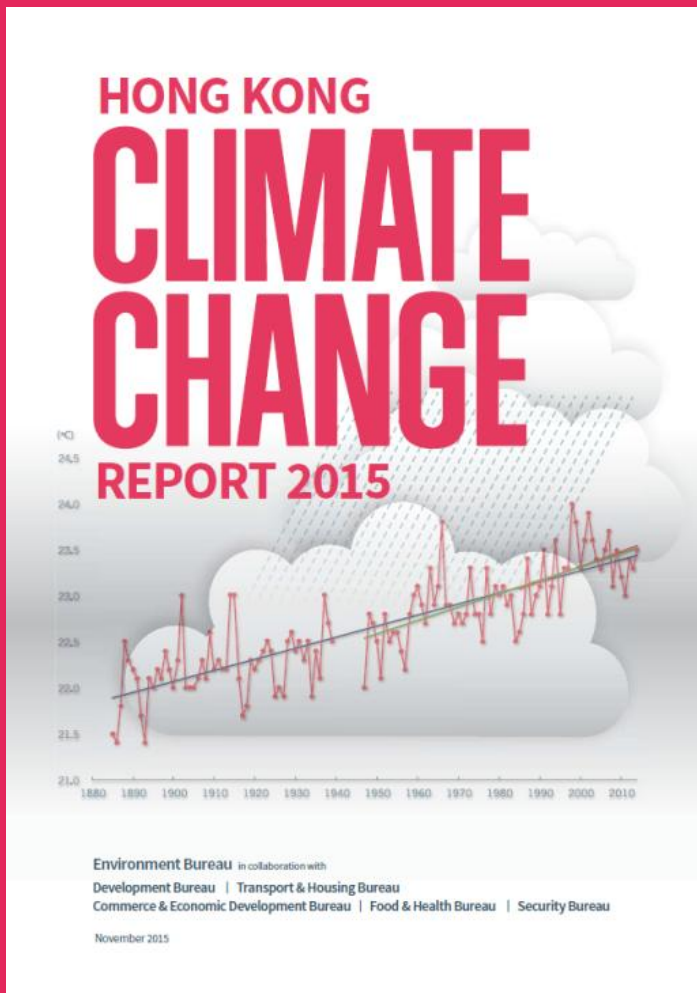


Holding the increase in the global average temperature to well **below 2°C** above pre-industrial levels and to pursue efforts to limit the temperature increase to 1.5°C above pre-industrial levels

..... communicate a nationally determined contribution (NDC) **every 5 years**

..... approaches shall aim to:

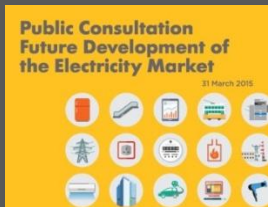
- Promote **mitigation** and **adaptation** ambition;
- Enhance **public** and **private participation** in the implementation of NDC; and
- Enable **opportunities for coordination** across instruments and relevant institutional arrangements.



The Paris Climate Conference
achieved positive outcomes by laying down
a clear direction and objectives for global co-
operation to address climate change.
To this end, **the Government will
take forward mitigation
measures proactively**

**The Chief Secretary for
Administration will chair an
inter-departmental committee**
to steer and coordinate
mitigation, adaptation and resilience work
to tackle climate change

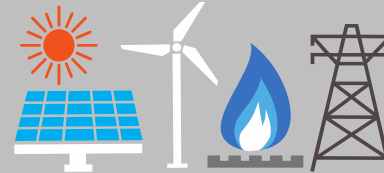
Future development of Electricity Market



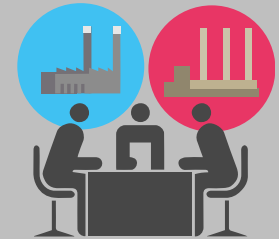
Scheme of Control Agreements



Energy Saving

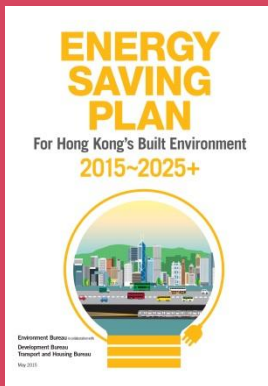


Renewable Energy



Permitted Rate of Return

Energy Saving Plan



Mandatory Energy Efficiency Labelling Scheme



Promote a low-carbon lifestyle in the community



A graphic illustration on a green background. On the left, there is a black silhouette of a tree with a thick trunk and a full canopy of leaves. In front of the tree's base is a smaller silhouette of a bush with large, rounded leaves. To the right of the tree, a white silhouette of a bird, possibly a heron or egret, stands facing left. The bird has a long neck, a long beak, and long legs. To the right of the bird, the words "NATURE" and "CONSERVATION" are written in large, white, bold, sans-serif capital letters, stacked vertically.

NATURE

CONSERVATION

Control Trade in Ivory

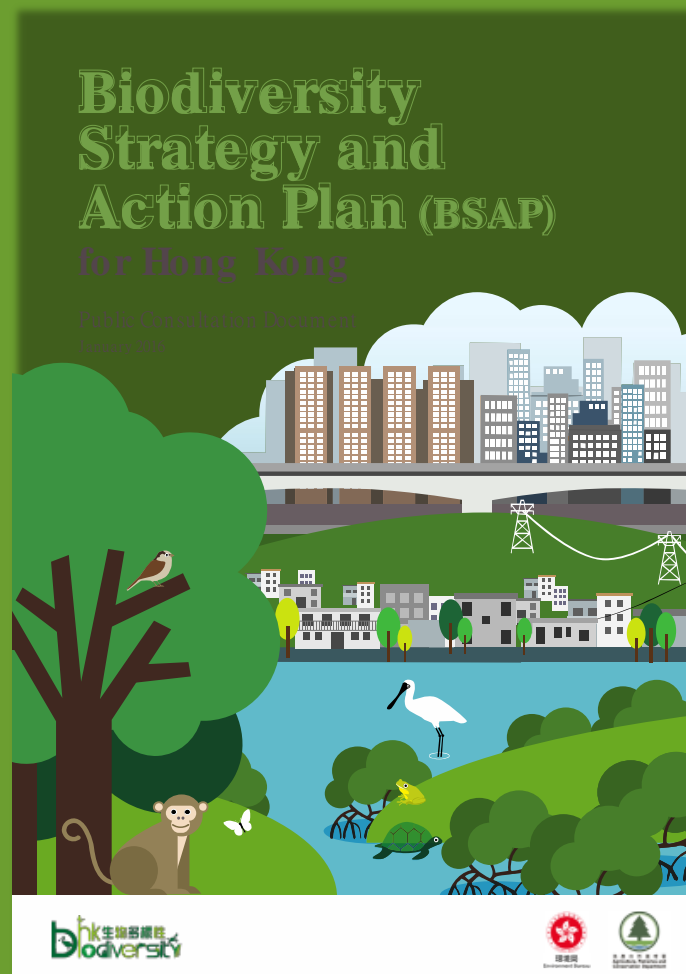
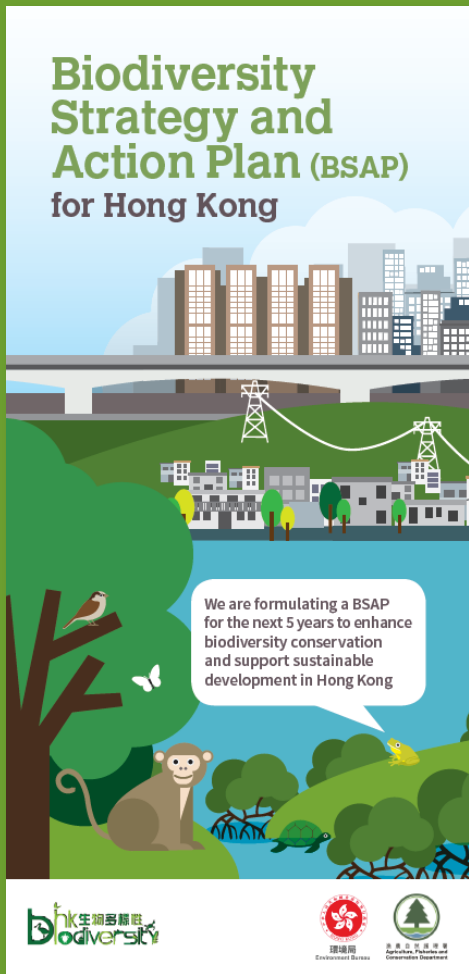


- **Initiate legislative procedures to ban import / export of elephant hunting trophies**

- **Actively explore other appropriate measures:**
 - ✓ **Further import/export ban;**
 - ✓ **Phase out local trade;**
 - ✓ **Increase penalties**

- **Continue to strengthen enforcement and take vigorous actions against smuggling and illegal trade**

Biodiversity Public Consultation

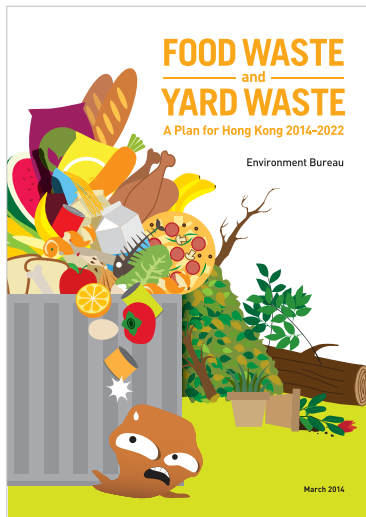



Earmark additional resources for taking forward action items



WASTE MANAGEMENT

Reduction at Source



	Municipal solid waste charging 	Construction waste charging 	Plastic shopping bags 	Waste Electrical and Electronic Equipment (WEEE) 	Glass beverage bottles 
Completed	SDC submitted recommendation	Reported the review	Full implementation of PSB charging	Amendment bill introduced; WEEE treatment and recycling facility funding approved	Amendment bill introduced
Underway	Inter-departmental working group	to enhance fly-tipping control	Publicity, education & enforcement	Bill under scrutiny; facility under construction	Bill under scrutiny; collection network being extended
Next Step	\$50M for community involvement programmes; to complete all preparatory work	To raise the disposal charges in 2016/17	To sustain publicity and enforcement	To complete all preparatory work	To complete all preparatory work

Food Waste

Food Wise Eateries

咪咗嘢 食店



Food Wise Eateries

~450

eateries participated

Surplus food redistribution

approved \$15 million for NGOs

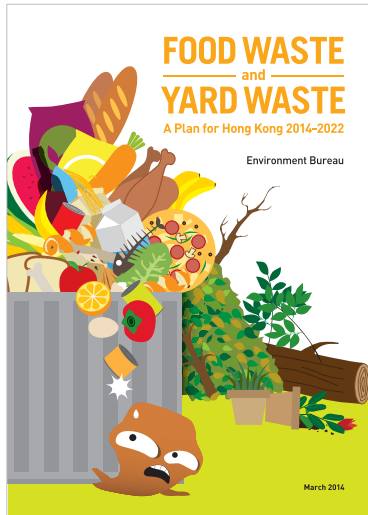
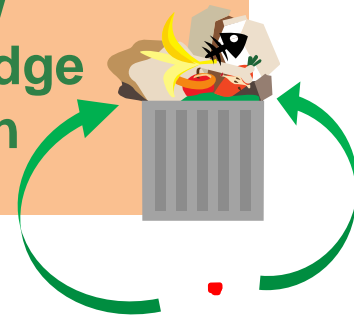


QWTF 2



Use capacity of anaerobic digestion at existing sewage treatment works for

Food Waste/
Sewage Sludge
Co-digestion



Recycling

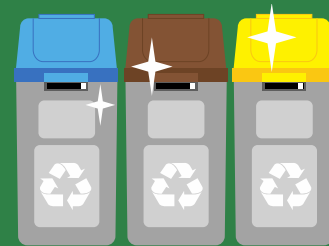
Recycling Fund

launched October 2015
with dedicated scheme
for small-scale projects



Clean recycling

promote at community
level through series of
publicity and educational
activities



Community Green Stations

- 2 commissioned
- 11 being implemented
by phases
- Site search/planning for
5 more

Regulate recycling of waste cooking oils

- Register collectors,
disposers and exporters
and require record-keeping
- Strengthen legislative
control



Waste to Energy



1st Organic Waste Treatment Facility

under construction and to be commissioned in **2017**

Integrated Waste Management Facility Phase 1

project approved and to be commissioned around **2023**



Sludge Treatment Facility

commenced operation in **April 2015** and 2MW of surplus power is estimated to be generated when throughput reaches 2000tpd



~**29,000m³**

per hour of **landfill gas** being collected



Long Term Waste Facilities Planning Study

Based on the concepts of a circular economy and “smart-city”, the study will determine the additional waste facilities and technologies needed up to 2041 to support sustainable development

Maximize resource recovery from waste

Optimize synergy of waste management technologies and land use

4 BROAD OBJECTIVES

Minimize vehicular traffic for transportation of waste

Minimize untreated MSW and unsorted construction waste to landfills





ENVIRONMENTAL QUALITY

Air Quality, Water Quality and External Lighting

Air Quality Monitoring Results from 2010 to 2015

Overall continued improvements have been recorded



Station		2010	2015 [^]	% Difference 2015 vs 2010
Respirable Suspended Particulates (RSP)	General	45	38	-16%
	Roadside	60	45	-25%
Nitrogen Oxides (NO _x)	General	94	74	-21%
	Roadside	318	228	-28%
Nitrogen Dioxides (NO ₂)	General	52	46	-12%
	Roadside	117	99	-15%
Sulphur Dioxides (SO ₂)	General	12	9	-25%
	Roadside	10	8	-20%
Ozone # (O ₃)	General	39	45	15%
	Roadside	n/a	19	46%*
Fine Suspended Particulates (FSP)	General	n/a	25	-24%*
	Roadside	n/a	30	-21%*
Carbon Monoxides (CO)	General	693	665	-4%
	Roadside	1066	743	-30%

Increase in ozone is mainly contributed by regional pollution and the reduction of NO_x emissions at roadside

[^] 2015 data are preliminary figures

Air Quality

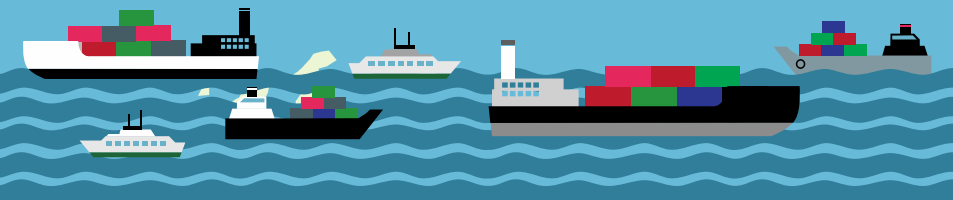
Cooperation

Marine ECA@PRD

Collaborate with Mainland to set up a marine emission control area in the PRD Region

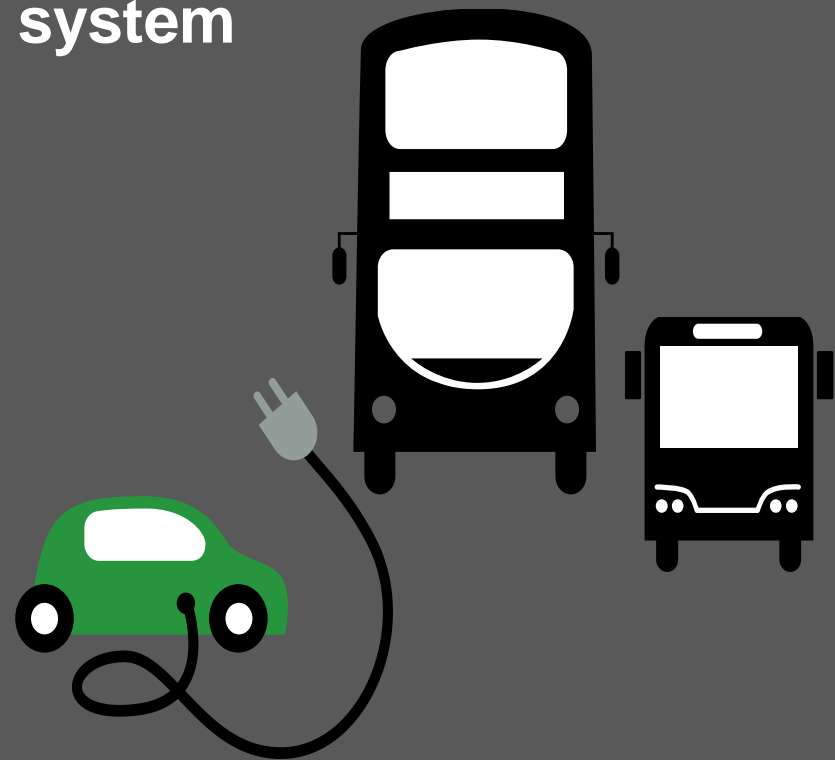
require ocean going vessels to use low sulphur fuel ($\leq 0.5\%$)

- while berthing in PRD ports progressively from **2017**
- in the PRD marine ECA from **2019**

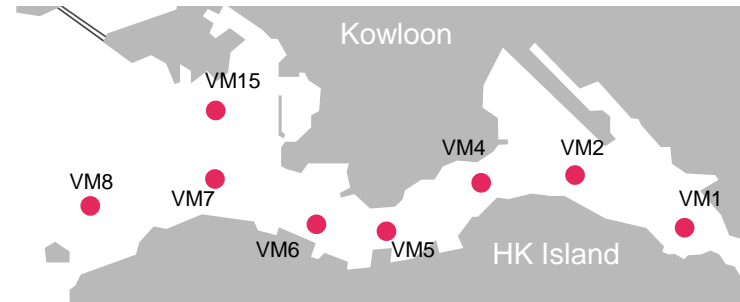
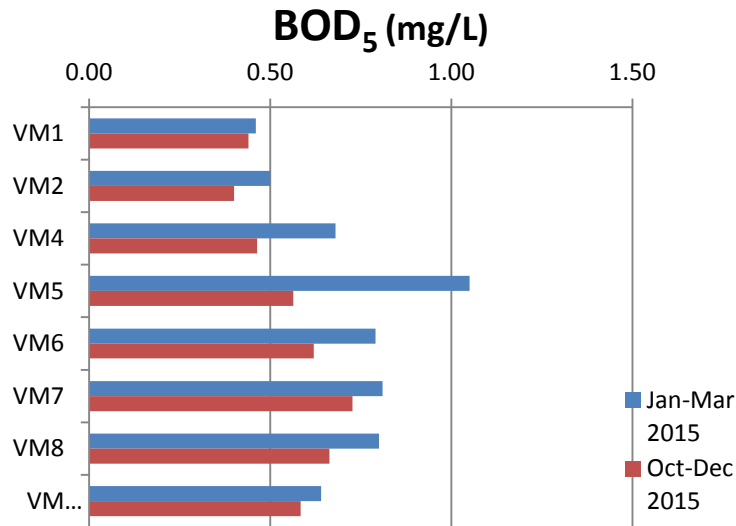


EV Promotion

Focus our efforts in promoting the use of EV in public transport system



Water Quality of Victoria Harbour

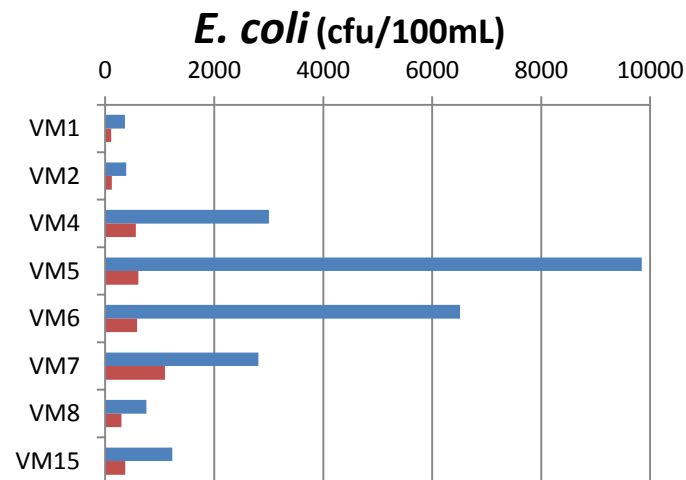


Harbour Area Treatment Scheme Stage 2A

Comparing the water quality between the beginning and end of 2015,

BOD ↓ **20%**

E.coli ↓ **74%**



Water Quality of Victoria Harbour

Promote
Water Friendly Culture



Harbour Area Treatment Scheme Stage 2A

completed in end 2015

Urban Coastal Water Quality Study

**Study coastal water quality and
pollution sources**

To devise improvement plans and
schedules, enhance the long term
leisure and recreational values of
the urban coastline of Victoria
Harbour; study to commence in
early 2016

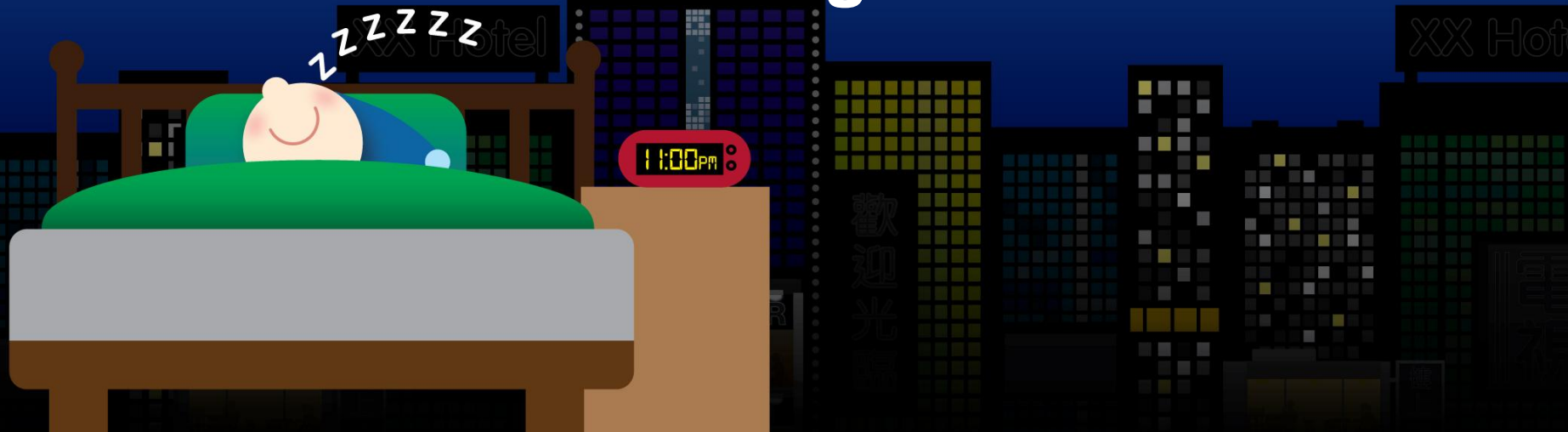
Charter on External Lighting



First-ever charter to take effect in **April 2016***



Signatories pledge to switch off lighting installations of decorative, promotional or advertising purposes affecting the outdoor environment at **11p.m. – 7a.m.** or **midnight – 7a.m.**



Public Consultation on the
Future Development of the
Electricity Market

ENVIRONMENT BUREAU

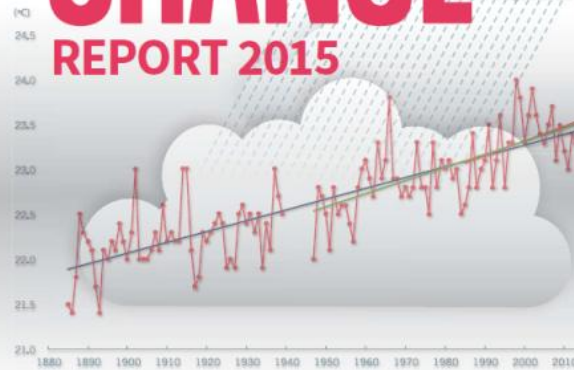
ENERGY SAVING PLAN

For Hong Kong's Built Environment
2015~2025+



Environment Bureau
Development Bureau
Transport and Housing Bureau
15/07/2015

HONG KONG CLIMATE CHANGE REPORT 2015



Environment Bureau in collaboration with
Development Bureau | Transport & Housing Bureau
Commerce & Economic Development Bureau | Food & Health Bureau | Security Bureau

November 2015

A CLEAN AIR PLAN FOR HONG KONG

Environment Bureau in collaboration with
Transport & Housing Bureau
Food & Health Bureau
Development Bureau



March 2013

Biodiversity Strategy and Action Plan (BSAP) for Hong Kong

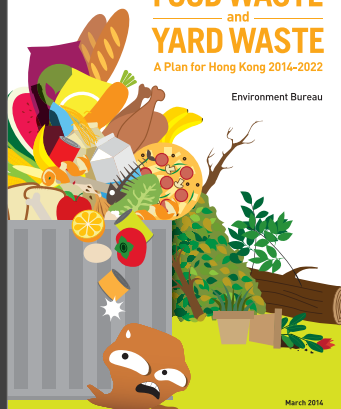


Biodiversity

ENVIRONMENT BUREAU
DEVELOPMENT BUREAU
TRANSPORT & HOUSING BUREAU
COMMERCE & ECONOMIC DEVELOPMENT BUREAU
FOOD & HEALTH BUREAU
SECURITY BUREAU

FOOD WASTE and YARD WASTE A Plan for Hong Kong 2014-2022

Environment Bureau



March 2014

HONG KONG BLUEPRINT FOR SUSTAINABLE USE OF RESOURCES 2013 - 2022

Environment Bureau



May 2013

Long Term Waste Facilities Planning Study



Environment Bureau
Development Bureau
Transport and Housing Bureau
Commerce and Economic Development Bureau
Food and Health Bureau
Security Bureau

Thank you!