

Legislative Council
Panel on Development and Panel on Home Affairs
Joint Subcommittee to Monitor the Implementation of the
West Kowloon Cultural District Project

Implementation of the Integrated Basement for
West Kowloon Cultural District

立法會發展事務委員會與民政事務委員會
監察西九文化區計劃推行情況聯合小組委員會

推展西九文化區綜合地庫

WKCD Integrated Basement 西九文化區綜合地庫

Importance of Integrated Basement 綜合地庫的重要性

- To meet the statutory public open space requirement of not less than 23 ha
以符合面積不少於23公頃公眾休憩用地的法定要求
- To create vehicle-free environment
以創造地面無車環境
- To serve as the backbone infrastructure of WKCD
以作為支持西九文化區基礎設施的中樞骨幹



763CL(part) – Third Stage of Construction Works of Integrated Basement

763CL工程計劃(部分) – 綜合地庫第三階段建造工程

Zone 分區	Scope of Works 工程範圍	Major Topside Development 主要上蓋發展	Implementation Programme 推展時間表
3B	Construction of the remaining foundation works for Zone 3B of Integrated Basement (IB) 建造綜合地庫3B區的餘下地基工程	Lyric Theatre Complex and other topside developments 演藝綜合劇場及其他上蓋物業發展項目	Target completion of Lyric Theatre Complex in around 2021 演藝綜合劇場預計將約於2021年完成
	Construction of essential basement structure 建造基本地庫結構		
	Construction of Underground Road (UR) of about 230m long 建造長約230米的地下行車路		
	Construction of protection works for existing Airport Express Tunnels (AET) 建造現有機場快綫隧道保護工程		
	Construction of Remaining Section of Artist Square Bridge about 15m long, with a clear width of about 7m, with two covered escalators and one covered staircase 建造藝術廣場天橋餘段工程，包括長約15米及淨寬約7米的有蓋行人天橋、2條有蓋電動扶梯及1條有蓋樓梯		
	Other infrastructure works, and associated works 其他基礎建設工程，以及相關工程		
Zone 分區	Scope of Works 工程範圍	Implementation Programme 推展時間表	
3A	Remaining works for the remaining section of UR 地下行車路餘下路段的餘下工程	To tie in with implementation of UR in Zone 3B to be completed in 2021 配合3B區內地下行車路預計於2021年完成	

763CL(part) – Third Stage of Construction Works of Integrated Basement

763CL工程計劃(部分) – 綜合地庫第三階段建造工程



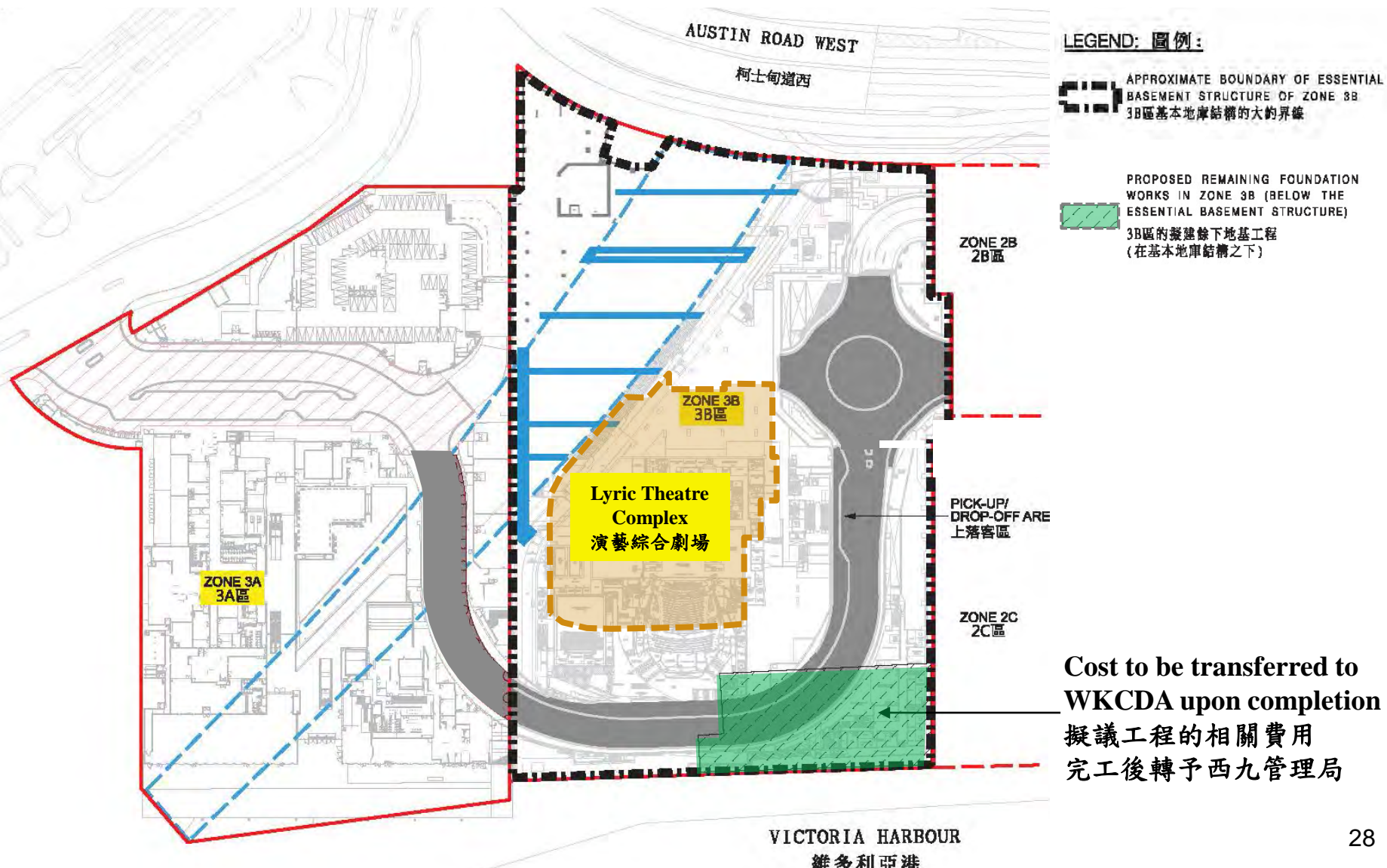
Integrated Basement Zoning Plan
綜合地庫分區圖

763CL(part) – Third Stage of Construction Works of Integrated Basement

763CL工程計劃(部分) – 綜合地庫第三階段建造工程

Remaining Foundation Works for Zone 3B of Integrated Basement

綜合地庫3B區的餘下地基工程



763CL(part) – Third Stage of Construction Works of Integrated Basement




763CL工程計劃(部分) – 綜合地庫第三階段建造工程

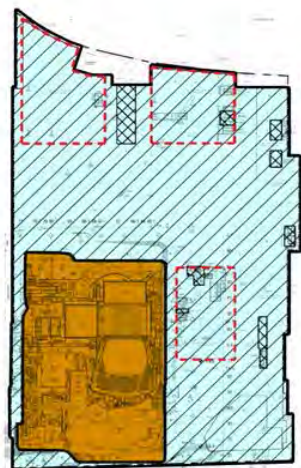
Essential Basement Structure

基本地庫結構

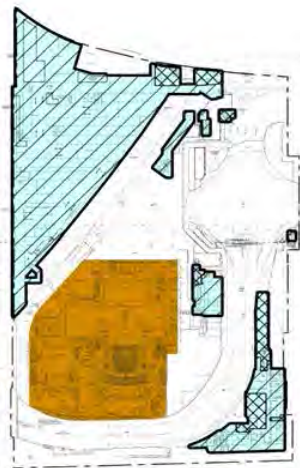
Legend :

圖例

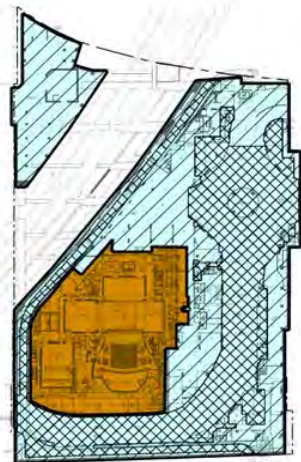
-  Essential Basement Structure (WKCDA's Facilities)
基本地庫結構(西九管理局設施)
-  Essential Basement Structure (Government Facilities)
基本地庫結構(政府設施)
-  Lyric Theatre Complex
演藝綜合劇場
-  Topside Development
上蓋發展



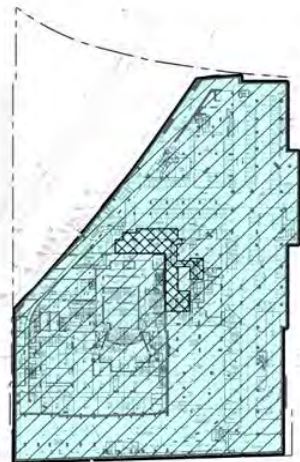
GROUND LEVEL
地面



B1 LEVEL
地庫第一層(閣樓)



B1 LEVEL
地庫第一層



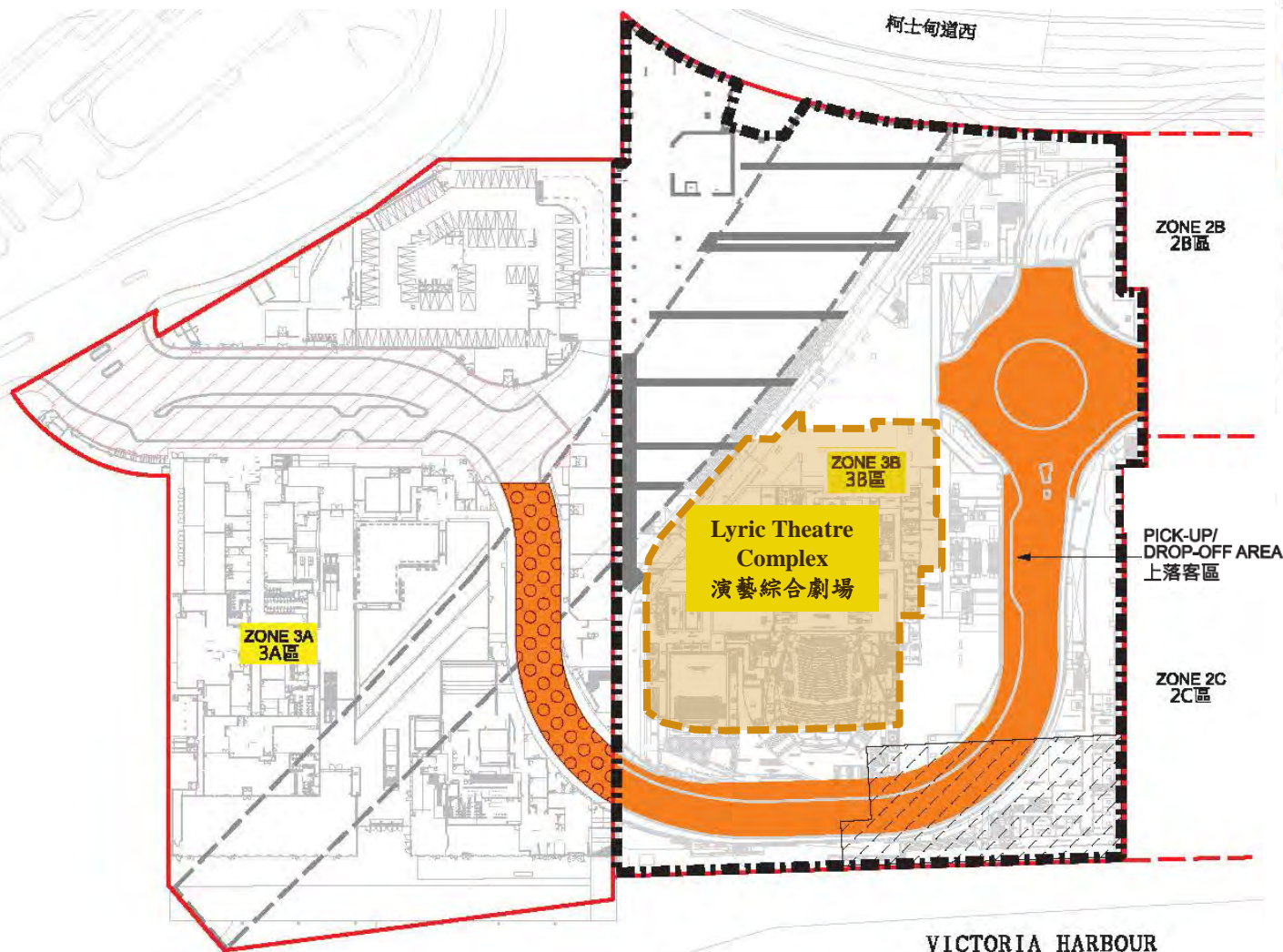
B2 LEVEL
地庫第二層

763CL(part) – Third Stage of Construction Works of Integrated Basement

763CL工程計劃(部分) – 綜合地庫第三階段建造工程

UR in Zone 3B and remaining works of UR in Zone 3A

3B區地下行車路和3A區的地下行車路餘下工程



LEGEND: 圖例:

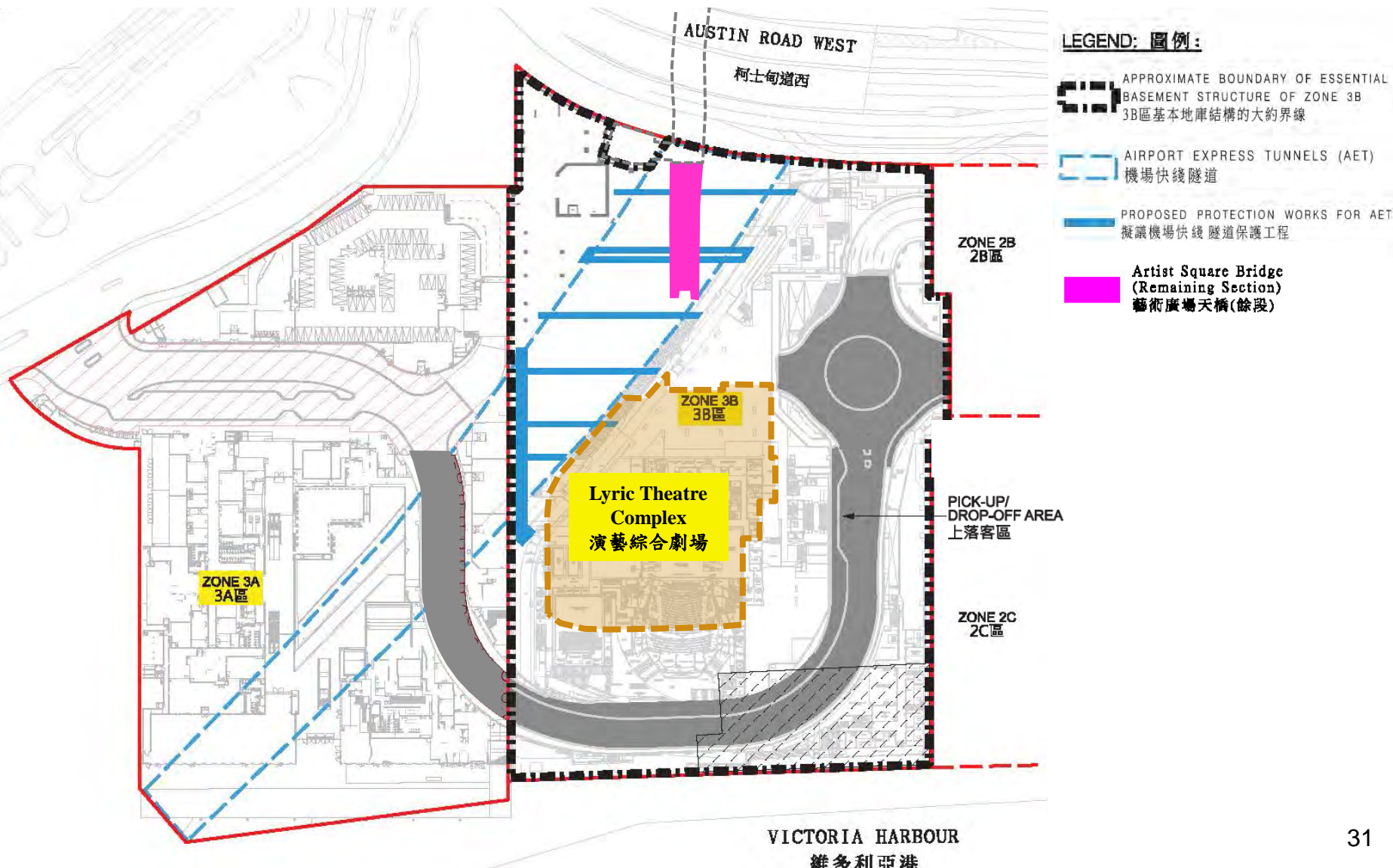
- APPROXIMATE BOUNDARY OF ESSENTIAL BASEMENT STRUCTURE OF ZONE 3B
3B區基本地鐵結構的大約界線
- CONSTRUCTION WORKS FOR UNDERGROUND ROAD IN ZONE 3B
3B區地下行車路的建造工程
- REMAINING WORKS FOR UNDERGROUND ROAD IN ZONE 3A
3A區地下行車路的餘下工程
- ASSOCIATED WORKS TO CONNECT THE REMAINING SECTION OF UNDERGROUND ROAD IN ZONE 3A
連接3A區餘下地下行車路的相关工程
- AIRPORT EXPRESS TUNNELS (AET)
機場快綫隧道

763CL(part) – Third Stage of Construction Works of Integrated Basement

763CL工程計劃(部分) – 綜合地庫第三階段建造工程

AET Protection Works and Artist Square Bridge Remaining Section

機場快綫隧道保護工程和藝術廣場天橋餘段



763CL(part) – Third Stage of Construction Works of Integrated Basement

763CL工程計劃(部分) – 綜合地庫第三階段建造工程



MAIN SECTION (TO BE CARRIED OUT UNDER SEPARATE PROJECT)
主段 (將在另一工務計劃項目進行)

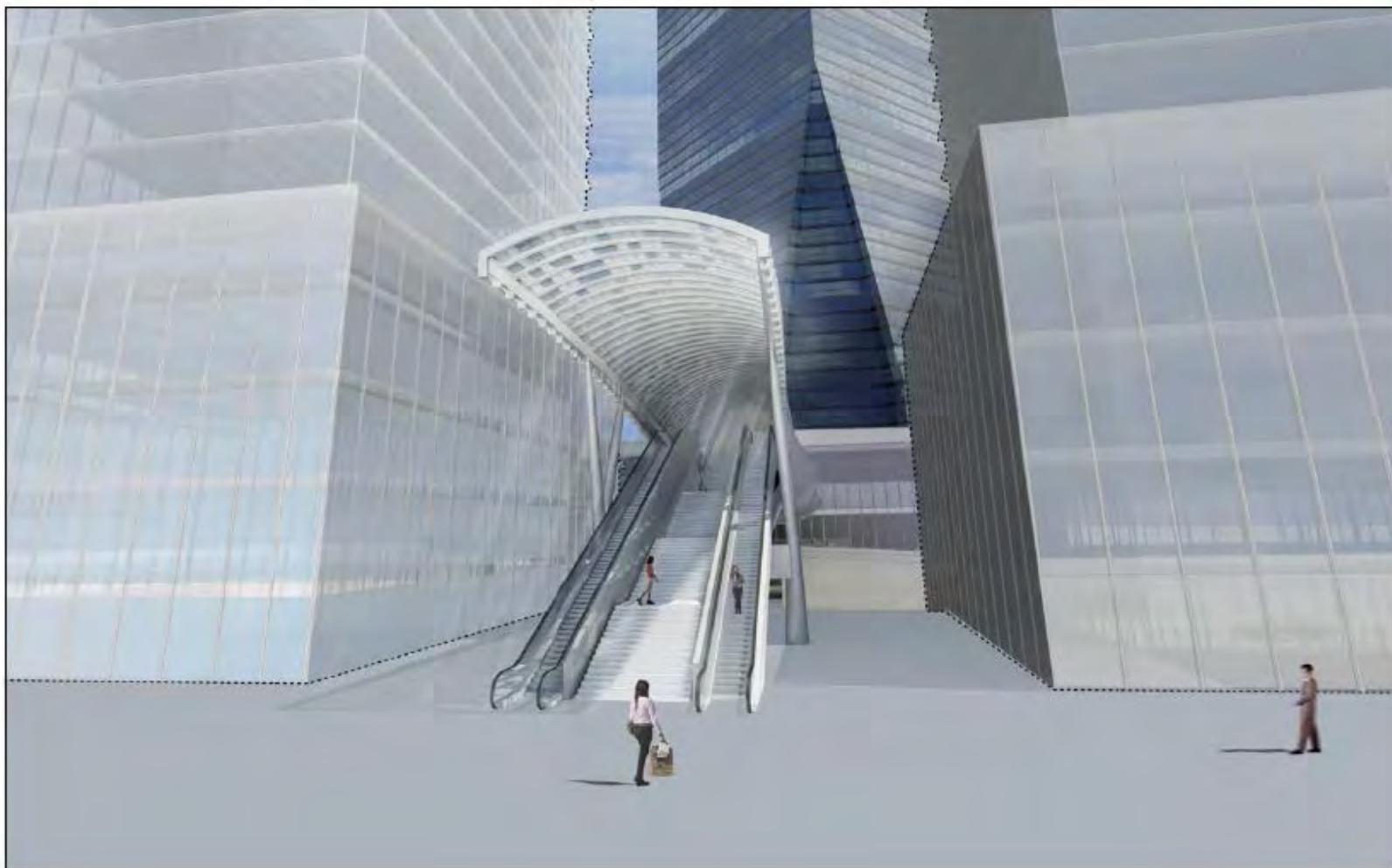
REMAINING SECTION
餘段

VIEW OF THE WESTERN SIDE OF THE PROPOSED ARTIST SQUARE BRIDGE

擬議藝術廣場天橋西立面構想圖

763CL(part) – Third Stage of Construction Works of Integrated Basement

763CL工程計劃(部分) – 綜合地庫第三階段建造工程



VIEW OF SOUTHERN SIDE OF PROPOSED ARTIST SQUARE BRIDGE (REMAINING SECTION) (LOOKING NORTH)

擬議藝術廣場天橋(餘段)南立面構想圖 (向北看)

Estimated Cost

預計費用

Third stage of construction works of integrated basement under **763CL(part)**

763CL工程計劃(部分)綜合地庫第三階段建造工程

項目 Items	預計費用* (百萬元) Estimated Cost* (\$ million)
綜合地庫3B區的基本地庫結構、地下行車路、機場快綫隧道保護工程及餘下地基工程，綜合地庫3A區地下行車路的餘下工程，其他基礎建設工程，以及相關工程 Essential basement structure, underground road, AET protection works and remaining foundation works in Zone 3B of IB, remaining works of underground road in Zone 3A of IB, other infrastructure works, and associated works	2,510
藝術廣場天橋餘段工程 Artist Square Bridge remaining section	60
環境緩解措施 Environmental mitigation measures	40
管理局的內部管理費用、顧問費及駐工地人員薪酬 WKCDA's in-house management cost, Consultants' fees, Remuneration of RSS	330
應急費用價格調整準備 Contingencies and Price adjustment	950
合共Total	3,890

* 除「價格調整準備」和「合共」兩數值按付款當日價格計算外，上述數值以2016年9月價格計算

Except "Price adjustment" and "Total" above which are in money-of-the-day prices, figures above are in Sep-16 prices

Advice Sought

徵求意見

Members are invited to note and provide views on the proposed part-upgrading of **763CL** to Category A

請委員備悉提升部分**763CL**為甲級的建議，並歡迎委員提供意見

Thank You

謝謝