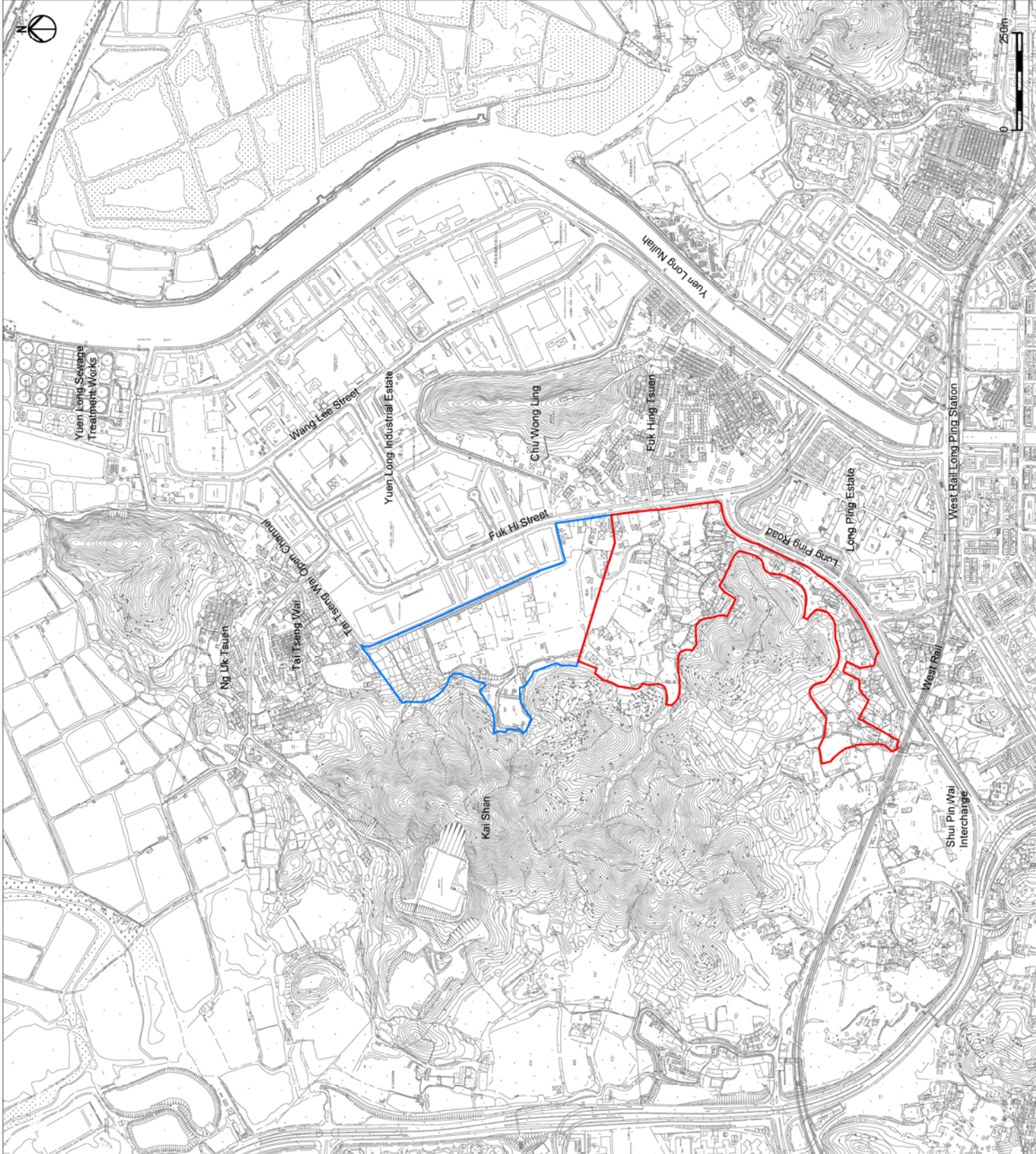


Drawings



- Legend
- Public Housing Site (PH Site)
 - Yuen Long Industrial Estate Extension (YLIEE Site)

Rev	Description	GL	10/13
A	FIRST ISSUE		
		By	Date

ARUP

Project title
 Agreement No. CB201/20293
 Planning and Engineering Study for the Public Housing Site
 and Yuen Long Industrial Estate Extension at Wang Chau

Drawing title
 Location of Project Site

Drawing no.	226464/OAP/PO11	Rev.	A
Drawn	GL	Checked	IL
Date	10/13	Approved	ST
Scale	AS SHOWN	Status	PRELIMINARY



HONG KONG HOUSING AUTHORITY

Legend

- Proposed Public Housing Site
- Proposed Yuen Long Industrial Estate Extension (YLIEE)
- Boundary of Wetland Conservation Area
- Boundary of Wetland Buffer Area

OZP (S/YL - PS/14, S/YL/21 & S/YL-LFS/7) - Zones

- Conservation Area (CA)
- Green Belt (GB)
- Government, Institution, or Community (G/I/C)
- Residential (Group A) (R(A))
- Village Type Development (V)
- Comprehensive Development Area (CDA)
- Other Specified Uses (OU)
- Open Storage (OS)

Rev	Description	By	Date
B	SECOND ISSUE		12/13
A	FIRST ISSUE		10/13

ARUP

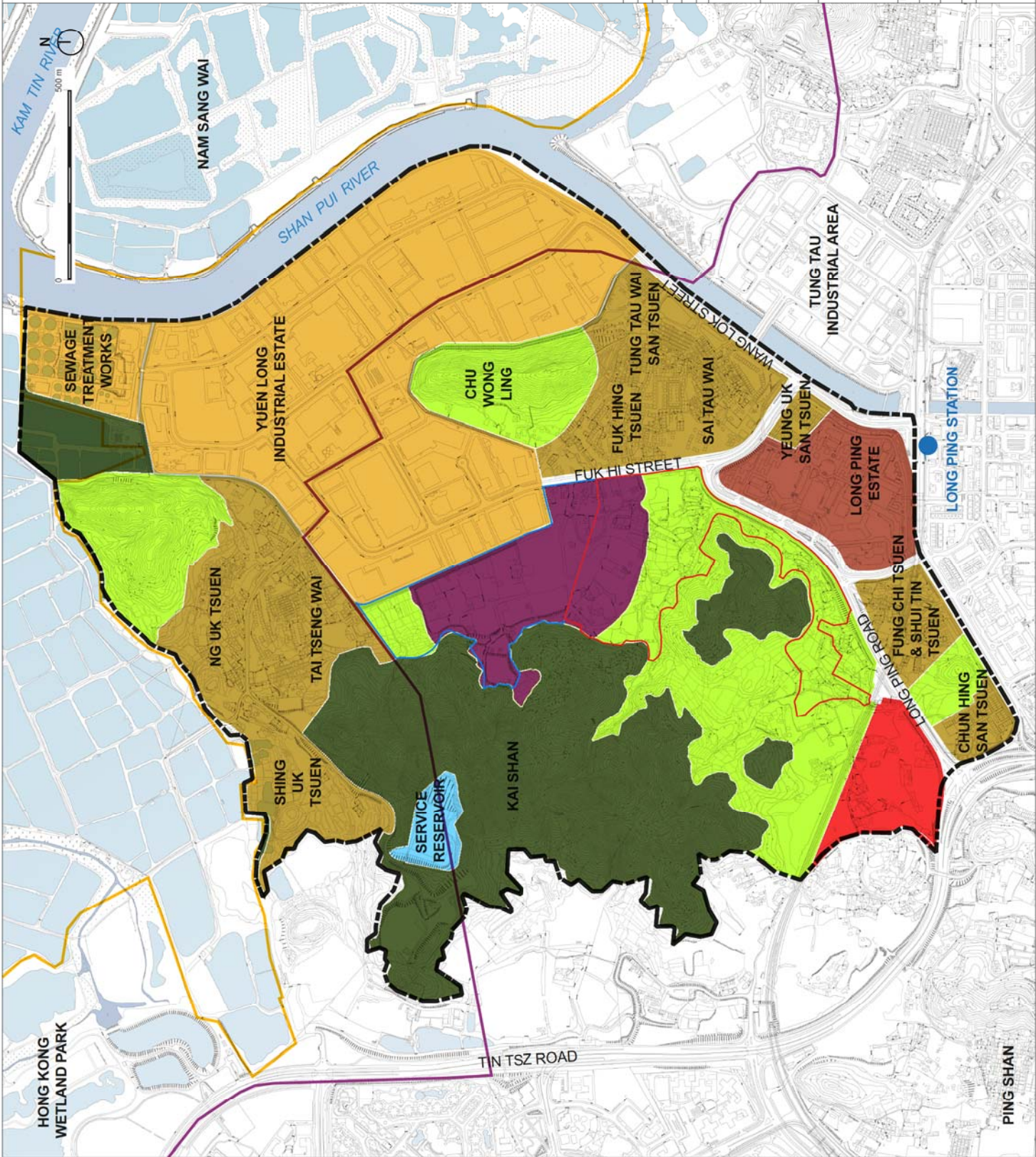
Project title
Agreement No. CB201/20293
Planning and Engineering Study for the Public Housing Site and Yuen Long Industrial Estate Extension at Wang Chau

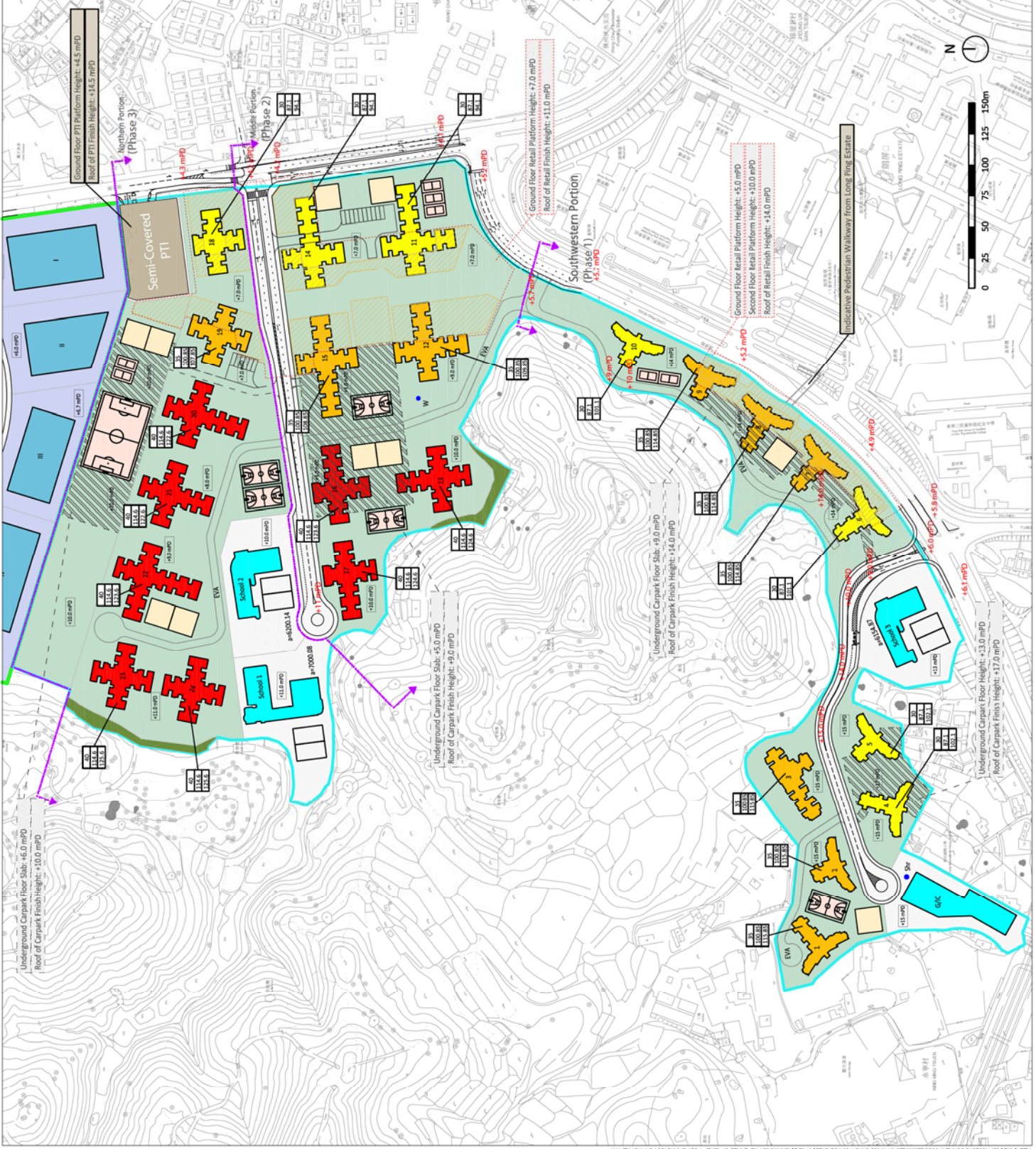
Drawing title
Proposed Development Boundary

Drawing no.	226464/OAPP/021	Rev.	B
Drawn	CW	Date	12/13
Checked	IL	Approved	ST
Scale	1:10000 (A3)	Status	PRELIMINARY

COPYRIGHT RESERVED

HONG KONG HOUSING AUTHORITY





- Legend**
- PH Site Development Boundary
 - YLEE Site Development Boundary
 - Development Plots
 - PH Site Not Developable Area
 - YLEE Site Not Developable Area
 - Other Areas
 - YLEE Building Footprints
 - 41 storys
 - 36 storys
 - 31 storys
 - GIC & Schools
 - Commercial activities
 - Carpark
 - Playground
 - 30-Degree Cut Slope
 - No. of domestic storys (incl. podium/lobby)
 - Baking height (meters)
 - mPD of building (meters)
 - Proposed Finish Height in mPD
 - Existing Spot Levels in mPD
 - Road Spot Levels in mPD
 - Considerations
 - Underground Parking Floor Slab Height
 - Other Considerations

+8.0 mPD	Proposed Finish Height in mPD
+11 mPD	Existing Spot Levels in mPD
+14 mPD	Road Spot Levels in mPD
+17 mPD	Considerations
+20 mPD	Underground Parking Floor Slab Height
	Other Considerations

Rev	Issue	By	Date
A	FIRST ISSUE		10/13

ARUP

Project title
 Agreement No. CB200120293
 Planning and Engineering Study for the Public Housing Site
 and Yuen Long Industrial Estate Extension at Wang Chau

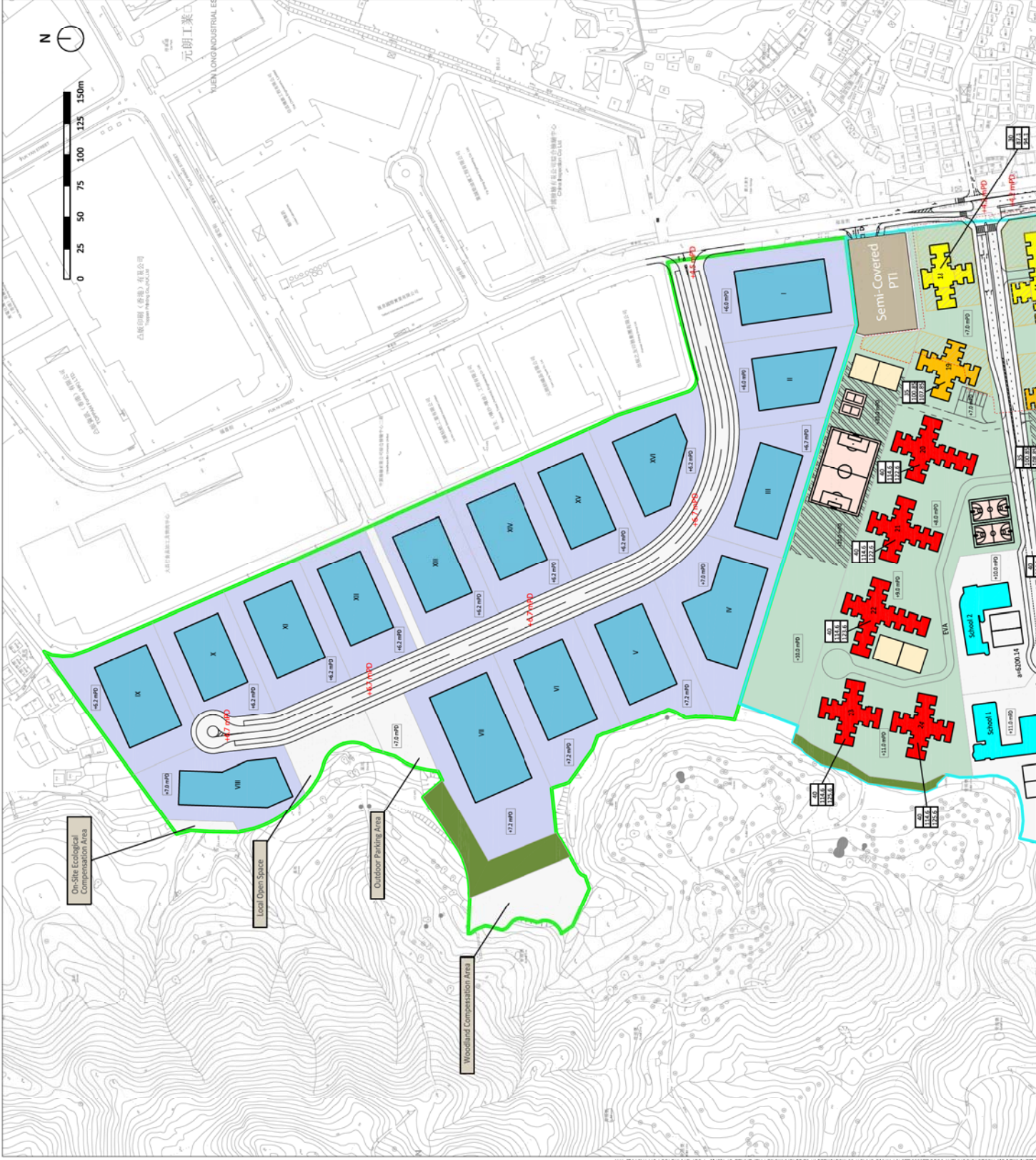
Drawing title
 Preferred Option Layout Plan - PH site

Drawing no.	226464/OA/PP/022	Rev.	A
Drawn by		Checked	IL
Date	10/13	Approved	ST
Scale	1:3000 (A3)	Status	PRELIMINARY
COPYRIGHT RESERVED			



HONG KONG HOUSING AUTHORITY





- Legend**
- PH Site Development Boundary
 - YLLEE Site Development Boundary
 - Development Plots
 - PH Site Not Developable Area
 - YLLEE Site Not Developable Area
 - Other Areas
 - YLLEE Building Footprints
 - 41 storers
 - 36 storers
 - 31 storers
 - GIC & Schools
 - Commercial activities
 - Carpark
 - Playground
 - 30-Degree Cut Slope

No. of domestic storers (incl. podium/lobby)
 Baking height (meters)
 mPD of building (meters)

Proposed Finish Height in mPD
 Existing Spot Levels in mPD
 Road Spot Levels in mPD
 Other Considerations
 Underground Parking Floor Slab Height
 Other Considerations

+8.0 mPD	Proposed Finish Height in mPD
+10.0 mPD	Existing Spot Levels in mPD
+11.0 mPD	Road Spot Levels in mPD
+12.0 mPD	Other Considerations
+13.0 mPD	Underground Parking Floor Slab Height

Rev	DESCRIPTION	By	Date
A	FIRST ISSUE		10/13

ARUP

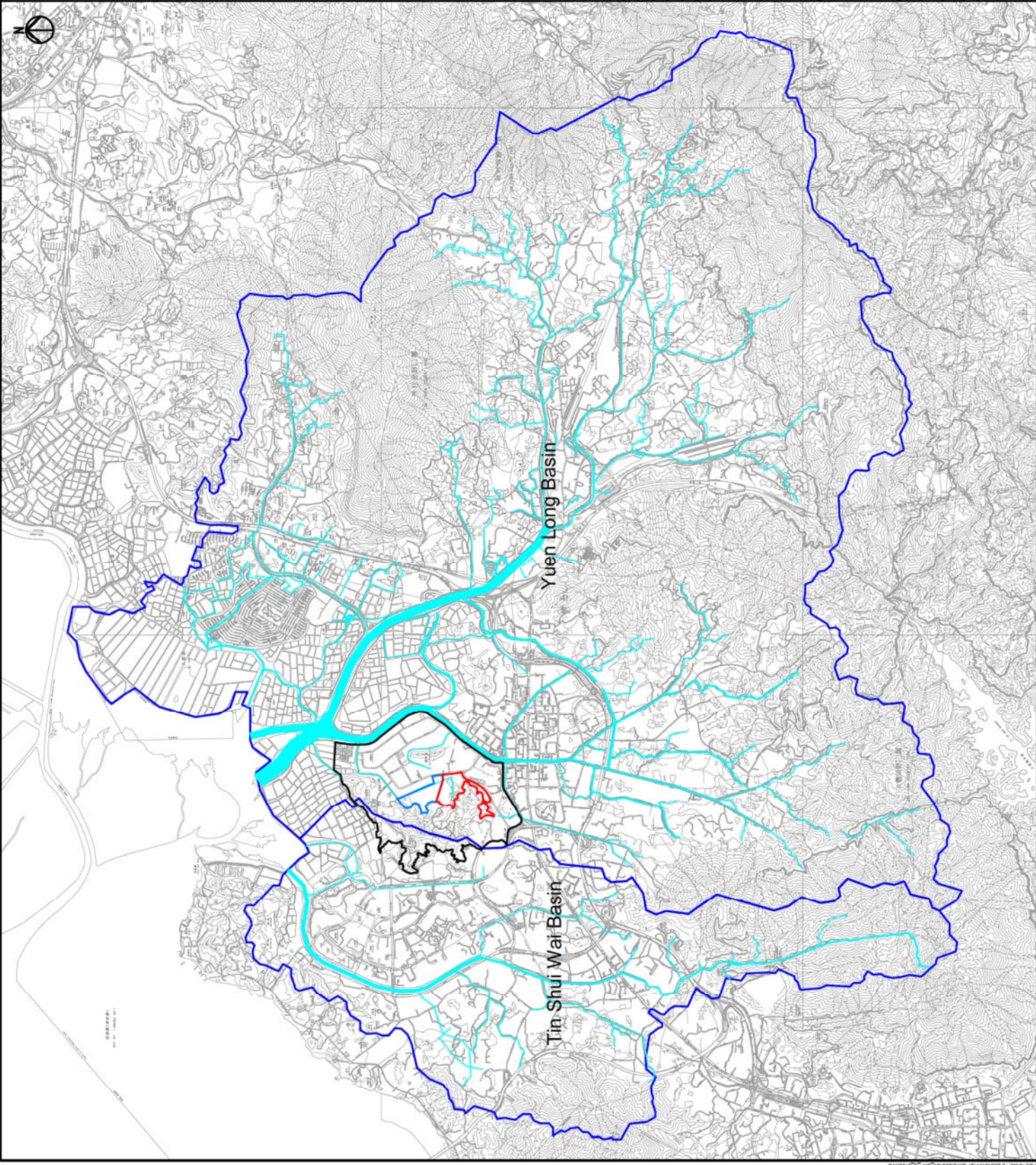
Project title
 Agreement No. CB201/20293
 Planning and Engineering Study for the Public Housing Site
 and Yuen Long Industrial Estate Extension at Wang Chau

Drawing title
 Preferred Option Layout Plan - YLLEE Site

Drawing no.	22646/OA/P/023	Rev.	A
Drawn by		Checked	IL
Date	10/13	Approved	ST
Scale	1:3000 (A3)	Status	PRELIMINARY



HONG KONG HOUSING AUTHORITY



- LEGEND:**
- STUDY AREA
 - PUBLIC HOUSING SITE (PH SITE)
 - YUEN LONG INDUSTRIAL ESTATE EXTENSION (YLIEE SITE)

Rev	Description	By	Date
-	FIRST ISSUE	GL	11/13

ARUP

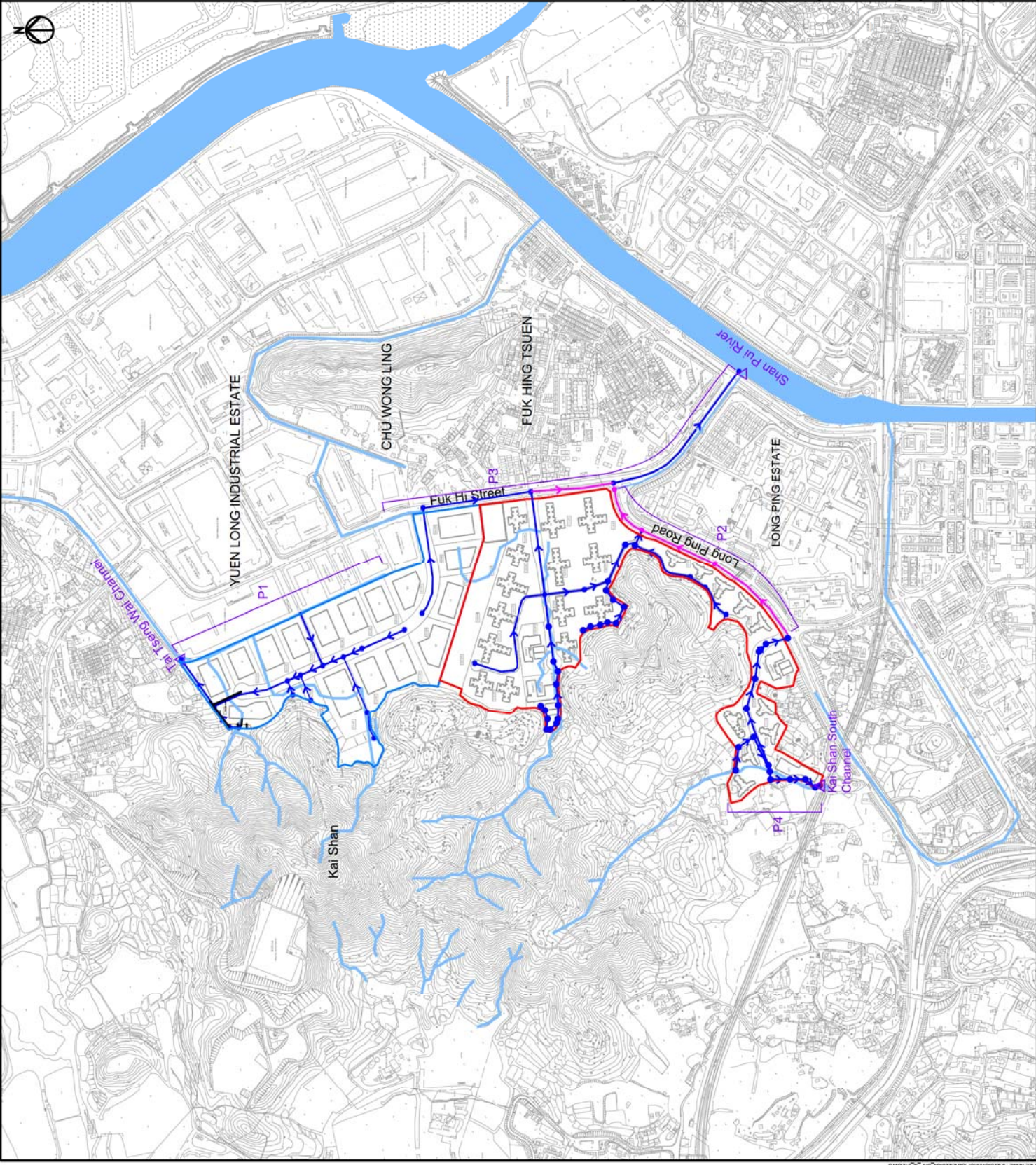
Project title
 Agreement No. CB201/20293
 Planning and Engineering Study for the Public Housing Site
 and Yuen Long Industrial Estate Extension at Wang Chau

Drawing title
 GENERAL BOUNDARY OF YUEN LONG BASIN
 AND TIN SHUI WAI BASIN

Drawing no.	226464/OAP/C/010	Rev.	-
Drawn	EC	Date	11/13
Checked	MB	Approved	ST
Scale	AS SHOWN	Status	PRELIMINARY



HONG KONG HOUSING AUTHORITY



LEGEND:

- ▭ PUBLIC HOUSING SITE (PH SITE)
- ▭ YUEN LONG INDUSTRIAL ESTATE EXTENSION (YLIEE SITE)
- PROPOSED STORMWATER DRAINAGE PIPE
- UPGRADE EXISTING STORMWATER DRAINAGE PIPE
- EXISTING WATERCOURSE/ DRAINAGE
- △ DISCHARGE POINT
- P1 PROPOSED SYSTEM ID

REV	DESCRIPTION	EC	BY	DATE
1	FIRST ISSUE	11/13		

ARUP

PROJECT TITLE
 Agreement No. CB201/20293
 Planning and Engineering Study for the Public Housing Site and Yuen Long Industrial Estate Extension at Wang Chau

DRAWING TITLE
 OVERVIEW OF PROPOSED STORMWATER DRAINAGE

DRAWING NO.	226464/OA/PI/012	REV.	
DRAWN	EC	CHECKED	MB
DATE	11/13	APPROVED	ST
SCALE	AS SHOWN	STATUS	PRELIMINARY
COPYRIGHT RESERVED			



HONG KONG HOUSING AUTHORITY



LOCATION KEY PLAN

NOTES:
 1. THE EXISTING AREA FOR PROPOSED L-CHANNEL IS ESTIMATED BY ADDING 1.5M TO THE CHANNEL WIDTH.
 2. EXACT DIMENSIONS OF DRAINAGE RESERVES SUBJECT TO AGREEMENT WITH DDO.

LEGEND:

- PUBLIC HOUSING SITE (PH SITE)
- YUEN LONG INDUSTRIAL ESTATE EXTENSION (YUE SITE)
- PROPOSED RETAINING WALL
- PROPOSED CATCHPIT WITH DOWNPIPE
- NODE WITH ID
- PROPOSED MANHOLE WITH ID
- 9500
- 9500
- 3000(W) x 2500(H) B.C. (6450)
- 225 UC
- PROPOSED 450mm L-CHANNEL
- DRAINAGE RESERVE
- △ DECHARGE POINT
- PROPOSED SYSTEM
- EXISTING WATERCOURSE / DRAINAGE
- EXISTING WATERCOURSE / DRAINAGE TO BE DISBURSED

Rev	DESCRIPTION	By	Date
-	FIRST ISSUE	EC	11/13

ARUP

Project title
 Agreement No. CB20120293
 Planning and Engineering Study for the Public Housing Site and Yuen Long Industrial Estate Extension at Wang Chau

Drawing title
PROPOSED DRAINAGE LAYOUT PLAN

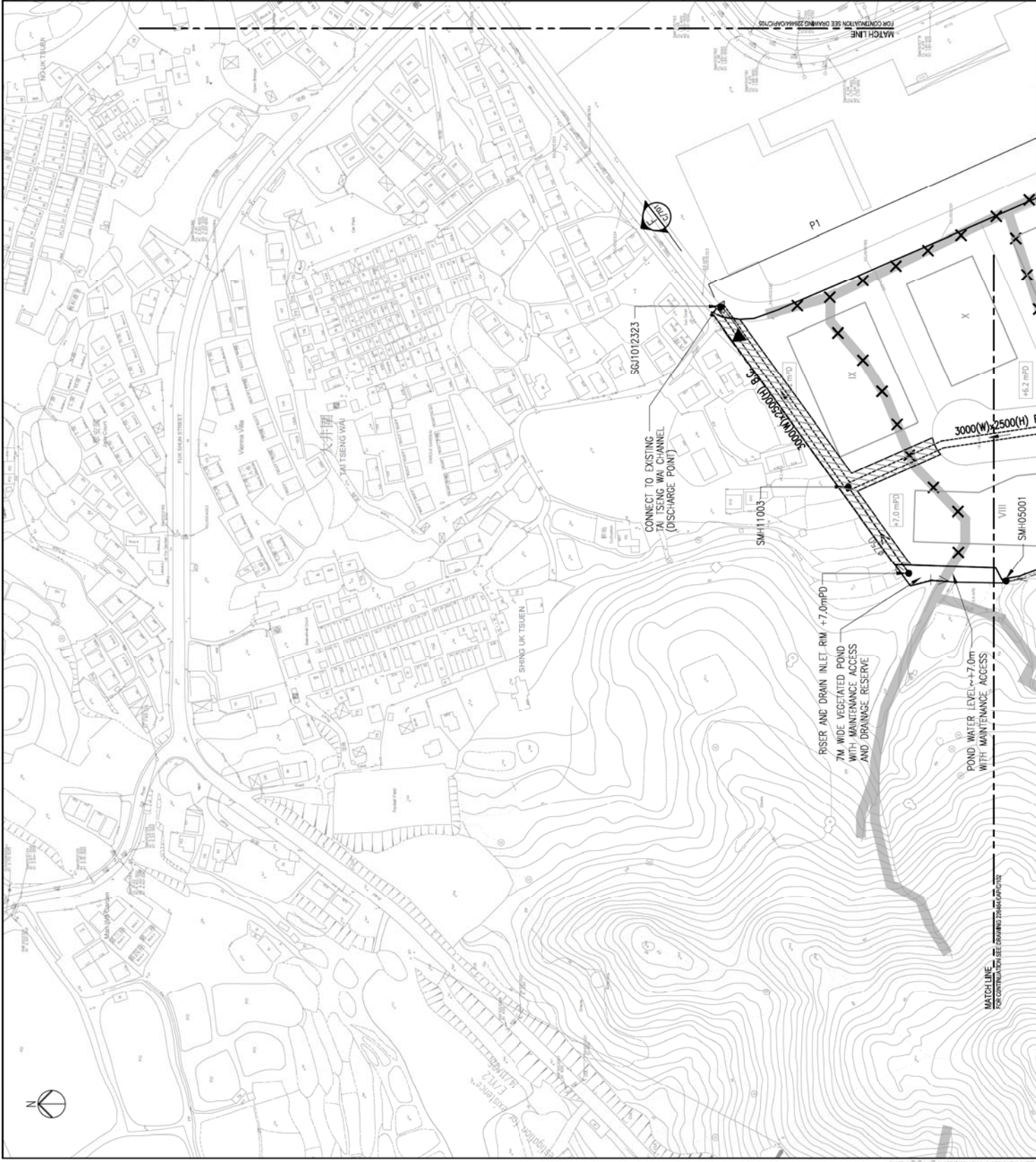
SHEET 1 OF 8

Drawing no.	226464/OAP/C/101	Rev.	-
Drawn	EC	Date	11/13
Checked	MB	Approved	ST
Scale	1:1000 (A1)	Status	PRELIMINARY

COPYRIGHT RESERVED



HONG KONG HOUSING AUTHORITY



MATCH LINE
 FOR CONTINUATION SEE DRAWING 226464/OAP/C/102



LOCATION KEY PLAN

NOTES:
1. FOR NOTES AND LEGEND REFER TO DRAWING NO. Z86A/01/C/01.

Rev	Description	By	Date
-	FIRST ISSUE	EC	11/13

Consultant

Project title

Agreement No. CB201/20293
Planning and Engineering Study for the Public Housing Site
and Yuan Lung Industrial Estate Extension at Wang Chau

Drawing title

PROPOSED DRAINAGE
LAYOUT PLAN

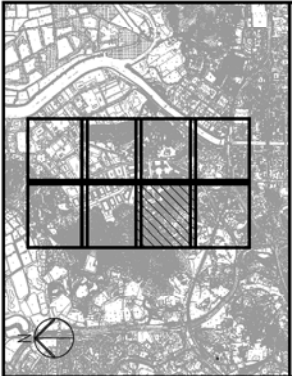
SHEET 2 OF 8

Drawing no.	226464/OAP/C/102	Rev.	-
Drawn	EC	Date	11/13
Checked	MB	Approved	ST
Scale	1:1000 (A1)	Status	PRELIMINARY



HONG KONG HOUSING AUTHORITY





LOCATION KEY PLAN

NOTES:
1. FOR NOTES AND LEGEND REFER TO DRAWING NO. ZS6640A/C1/01.

Rev	Description	By	Date
-	FIRST ISSUE	EC	11/13

ARUP

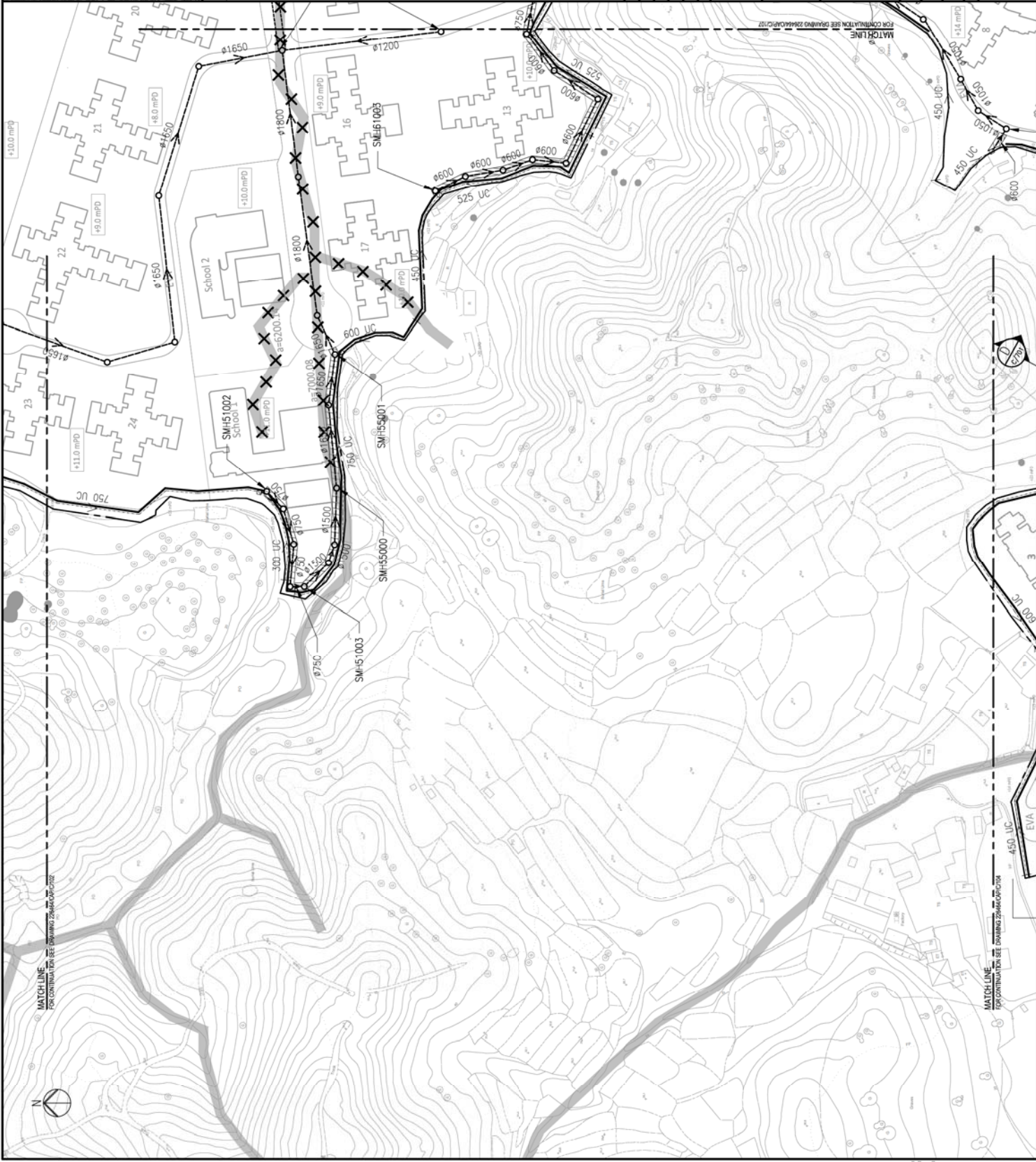
Project title
Agreement No. CB201/20293
Planning and Engineering Study for the Public Housing Site
and Yuen Long Industrial Estate Extension at Wang Chau

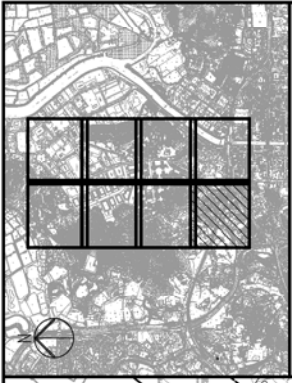
Drawing title
PROPOSED DRAINAGE
LAYOUT PLAN

SHEET 3 OF 8

Drawing no.	226464/OA/P/C1/03	Rev.	A
Drawn	EC	Checked	MB
Date	11/13	Approved	ST
Scale	1:1000 (A1)	Status	PRELIMINARY

COPYRIGHT RESERVED
HONG KONG HOUSING AUTHORITY




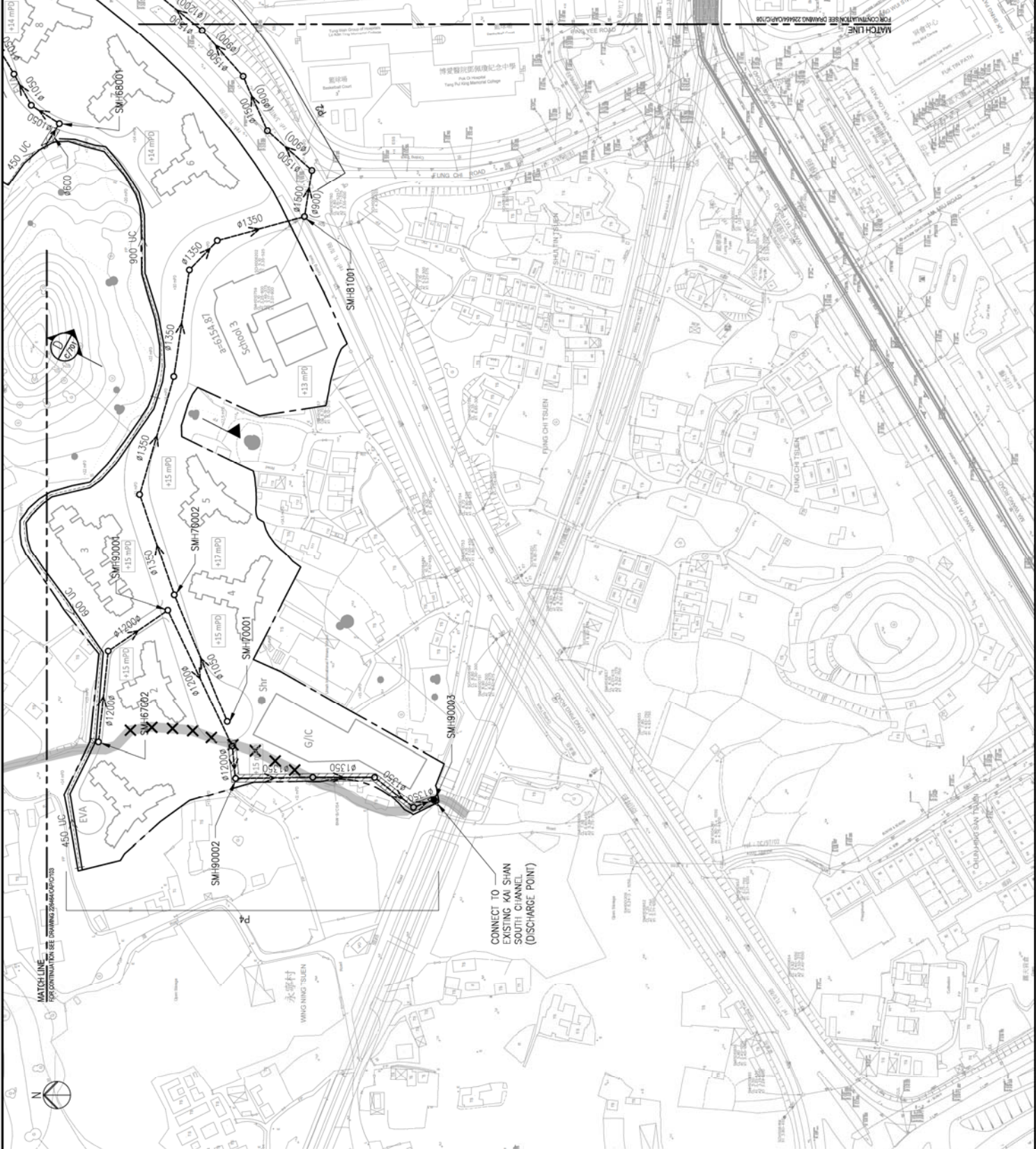


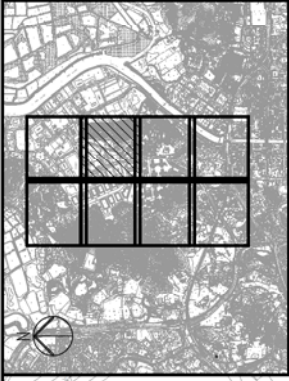
LOCATION KEY PLAN

NOTES:
1. FOR NOTES AND LEGEND REFER TO DRAWING NO. ZS6640A/C104.

Rev	Description	EC	By	Date
-	FIRST ISSUE	EC	11/13	
ARUP				
Project title				
Agreement No. CB201/20293				
Planning and Engineering Study for the Public Housing Site and Yuen Long Industrial Estate Extension at Wang Chau				
Drawing title				
PROPOSED DRAINAGE LAYOUT PLAN				
SHEET 4 OF 8				
Drawing no.	226464/OAP/C104			
Drawn	EC	Date	11/13	Status
Checked	MB	Approved	ST	
Scale	1:1000 (A1)			
PRELIMINARY				
COPYRIGHT RESERVED				

HONG KONG HOUSING AUTHORITY				
				





LOCATION KEY PLAN

NOTES:
1. FOR NOTES AND LEGEND REFER TO DRAWING NO. ZS66AD/PC/161.

Rev	Description	By	Date
-	FIRST ISSUE	EC	11/13

ARUP

Project title
Agreement No. CB20120293
Planning and Engineering Study for the Public Housing Site
and Yuen Long Industrial Estate Extension at Wang Chau

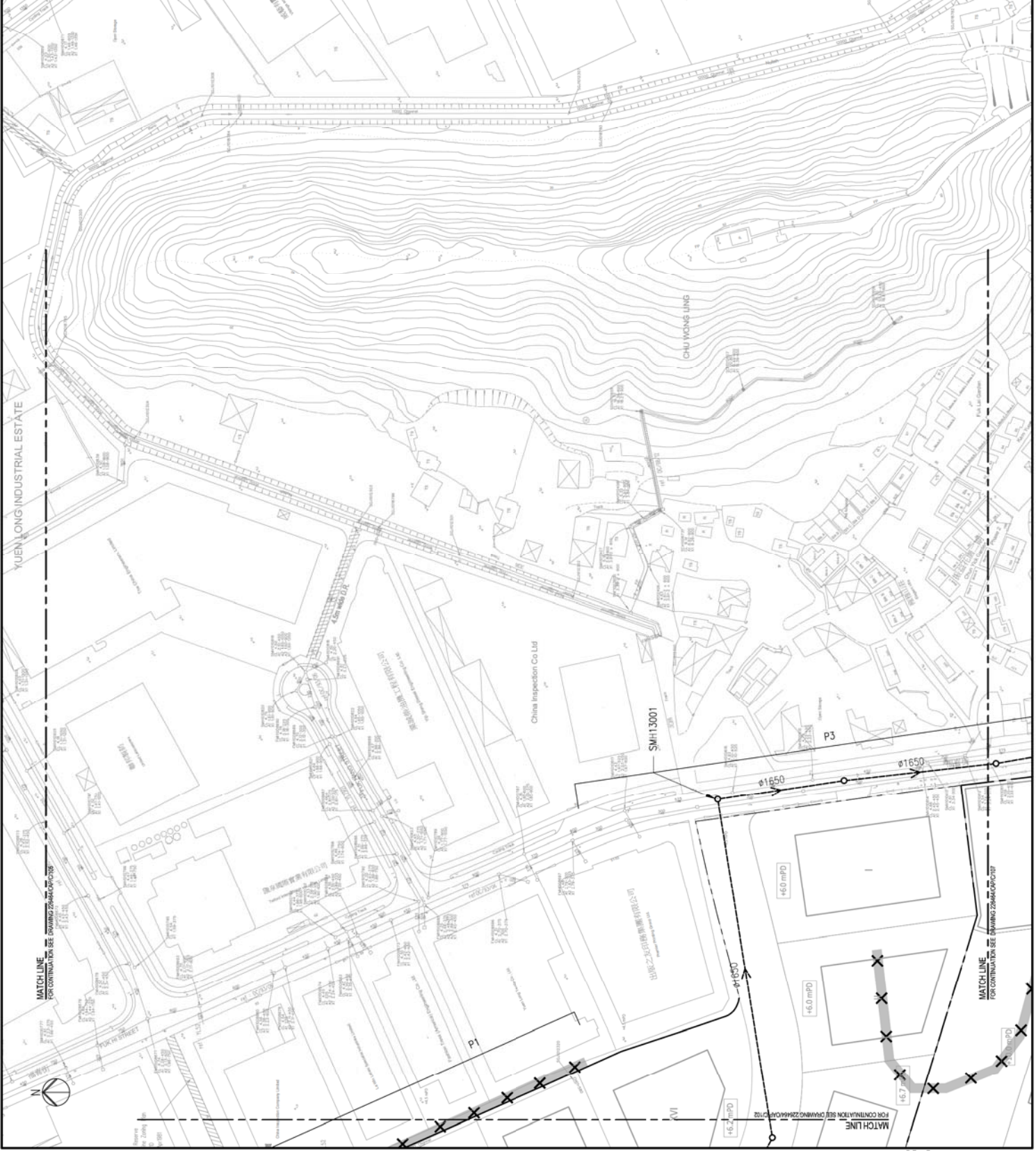
Drawing title
**PROPOSED DRAINAGE
LAYOUT PLAN**

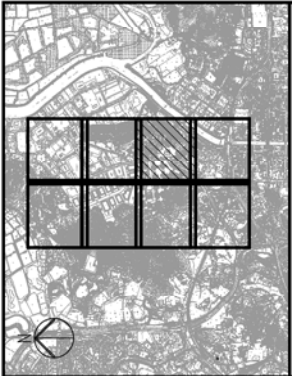
SHEET 6 OF 8

Drawing no.	225464/OAP/C/106	Rev.	-
Drawn	EC	Checked	MB
Date	11/13	Approved	ST
Scale	1:1000 (A1)	Status	PRELIMINARY



HONG KONG HOUSING AUTHORITY





LOCATION KEY PLAN

NOTES:
1. FOR NOTES AND LEGEND REFER TO DRAWING NO. ZS6640A/C1/1.

Rev	Description	By	Date
-	FIRST ISSUE	EC	11/13

ARUP

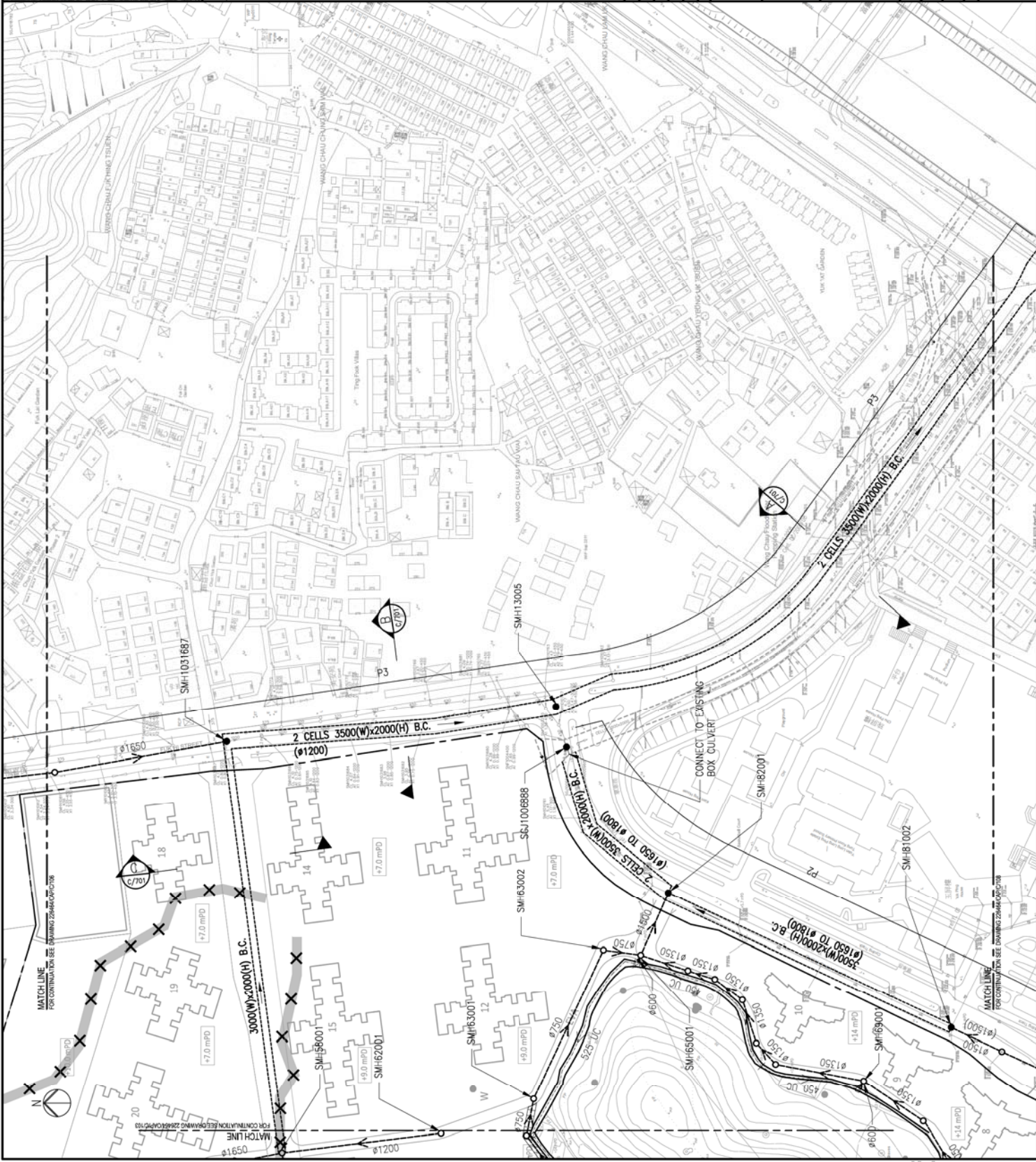
Project title
Agreement No. CB201/20293
Planning and Engineering Study for the Public Housing Site
and Yuen Long Industrial Estate Extension at Wang Chau

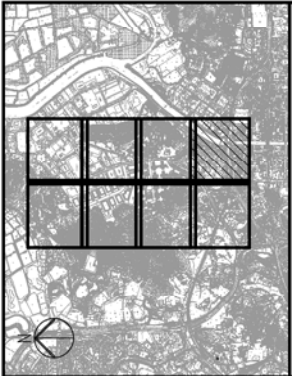
Drawing title
**PROPOSED DRAINAGE
LAYOUT PLAN**

SHEET 7 OF 8	
Drawing no.	226464/OA/PIC/107
Drawn	EC
Date	11/13
Checked	MB
Approved	ST
Scale	1:1000 (A1)
Status	PRELIMINARY
COPYRIGHT RESERVED	



HONG KONG HOUSING AUTHORITY





LOCATION KEY PLAN

NOTES:
1. FOR NOTES AND LEGEND REFER TO DRAWING NO. ZS66AD/PC/1.

Rev	Description	EC	11/13	Date

ARUP

Project title
Agreement No. CB201/20293
Planning and Engineering Study for the Public Housing Site
and Yuen Long Industrial Estate Extension at Wang Chau

Drawing title
**PROPOSED DRAINAGE
LAYOUT PLAN**

SHEET 8 OF 8

Drawing no.	226464/OAP/IC/108	Rev.	
Drawn	EC	Date	11/13
Checked	MB	Approved	ST
Status	PRELIMINARY	Scale	1:1000 (A1)
Copyright	RESERVED		



HONG KONG HOUSING AUTHORITY



NOTES:
 1. THE MANHOLE SCHEDULE ONLY SHOWS MAJOR MANHOLE WHERE CHANGE IN GRADIENT AND/OR PIPES SIZES OCCUR.
 2. INTERMEDIATE MANHOLES ARE EITHER DROP MANHOLES OR MANHOLES AT BENDS/JUNCTIONS. LEVELS ARE NOT SHOWN FOR CLARITY.

SYSTEM ID	MANHOLE / NODE NO.		GROUND LEVEL (mPD)		INVERT LEVEL (mPD)		Gradient	DIA. OF PIPE / WIDTH OF BOX CULVERT (mm)	HEIGHT OF BOX CULVERT (IF APPLICABLE) (mm)	LENGTH (m)
	FROM	TO	U/S	D/S	U/S	D/S				
P1	SMH 13002	SMH 13003	6.70	6.70	2.75	2.55	500	2500	2000	100
	SMH 08001	SMH 08001	6.70	6.70	2.55	2.48	500	2500	2000	33
	SMH 02001	SMH 07001	7.20	7.20	5.00	4.71	200	900	-	58
	SMH 07001	SMH 08001	7.20	6.70	4.11	3.84	500	1200	-	133
	SMH 08001	SMH 10001	6.70	6.70	2.48	2.38	500	2500	2000	50
	SMH 10001	SGJ 1018766	6.70	6.70	2.22	2.20	1400	1200	-	40
	SMH 10001	SMH 11001	6.70	6.70	2.11	2.11	1400	1200	-	125
	SMH 06001	SMH 11001	7.00	6.70	5.10	4.78	200	600	2500	47
	SMH 06002	SMH 11002	7.00	6.70	5.10	4.94	200	600	-	64
	SMH 11001	SMH 11002	6.70	6.70	2.06	2.03	1200	3000	2500	33
P3	SMH 11002	SMH 11003	6.70	6.70	2.03	1.89	1200	3000	2500	41
	SMH 05001	SMH 11003	6.70	6.70	4.70	4.54	500	2000	-	164
	SMH 11003	SGJ1012323 (Point G)	6.70	3.90	1.89	1.80	1200	3000	2500	81
	SMH 13000	SMH 13001	6.70	4.50	2.15	1.58	400	1650	-	106
	SMH 13001	SMH 1031687	4.50	4.17	1.55	0.98	400	1650	-	227
	SMH 51003	SMH 51003	11.00	11.00	7.85	7.51	200	750	-	230
	SMH 55000	SMH 55000	11.00	11.00	7.25	7.09	400	1500	-	69
	SMH 55001	SMH 55001	11.00	10.00	7.09	6.91	400	1650	-	65
	SMH 58001	SMH 58001	10.00	8.20	6.91	5.38	500	1800	-	70
	SMH 58001	SMH 58001	9.00	8.20	5.35	4.78	500	1650	-	167
P2	SMH 59001	SMH 58001	9.00	8.20	5.80	5.58	500	1200	-	286
	SMH 58001	SMH 71001	8.20	5.70	2.10	1.82	500	3000	2000	109
	SMH 71001	SMH 1031687	5.70	4.17	0.76	0.60	500	3000	2000	138
	SMH 1031687	SMH 13005	4.17	4.43	0.60	0.49	1500	3500	2000	80
	SMH 13005	SMH 71003 (Shin Pui River)	4.43	4.00	0.49	0.23	1500	3500	2000	170
	SMH 61003	SMH 63001	11.00	6.80	4.70	4.06	300	600	-	387
	SMH 63001	SMH 63002	6.80	5.90	3.62	3.39	400	900	-	192
	SMH 63002	SMH 65001	5.90	5.70	3.39	3.35	400	900	-	90
	SMH 68001	SMH 69001	13.00	10.00	8.15	7.84	400	1050	-	17
	SMH 69001	SMH 65001	10.00	5.70	7.34	3.05	500	1350	-	123
P4	SMH 65001	SMH 82001	5.70	5.70	1.47	1.43	500	1500	-	132
	SMH 70001	SMH 70002	15.00	15.00	12.65	12.47	400	1050	-	23
	SMH 81001	SMH 81001	15.00	5.80	12.35	3.15	550	1350	-	74
	SMH 81001	SMH 1026952	5.80	4.80	2.25	1.97	500	1500	-	265
	SMH 1026952	SMH 81002	4.80	4.90	1.97	1.81	500	1500	-	140
	SMH 81002	SMH 82001	4.90	5.96	1.40	1.23	1000	3500	2000	80
	SMH 82001	SGJ 1006888	5.96	5.00	1.23	1.12	1000	3500	2000	170
	SMH 67002	SMH 90001	15.00	15.00	12.50	12.01	200	1200	-	112
	SMH 90001	SMH 90002	15.00	15.00	12.01	11.54	200	1200	-	98
	SMH 90002	SMH 90003	15.00	11.00	11.54	8.35	300	1350	-	94

ARUP

Project title
 Manhole Schedule for
 Proposed Drainage System
 Agreement No. CB201/20293
 Planning and Engineering Study for the Public Housing Site
 and Yuen Long Industrial Estate Extension at Wang Chau

Drawing title
 MANHOLE SCHEDULE FOR
 PROPOSED DRAINAGE SYSTEM

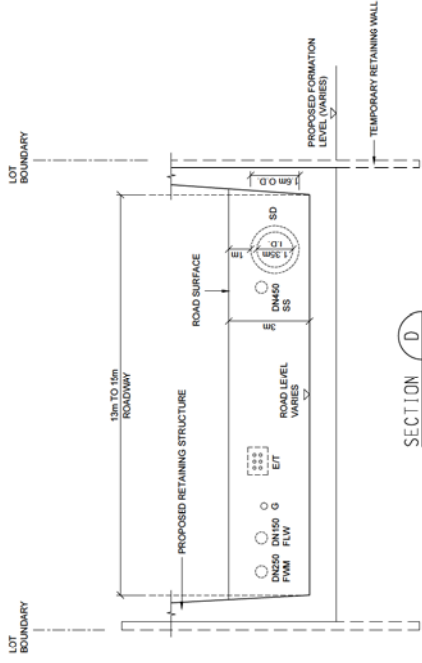
Drawing no.	226464/OAP/IC/109	Rev.	-
Drawn	EC	Checked	MB
Date	11/1/13	Approved	ST
Scale	N.T.S.	Status	PRELIMINARY
COPYRIGHT RESERVED			



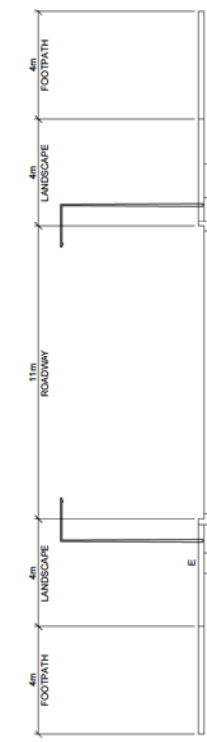
HONG KONG HOUSING AUTHORITY

NOTES:
 1. UTILITIES SHOWN IN THIS DRAWING ARE INDICATIVE ONLY BASED ON AVAILABLE INFORMATION OBTAINED FROM UTILITY UNDERTAKERS. THE EXACT DETAILS INCLUDING SIZES, ALIGNMENTS AND LEVELS TO BE FURTHER VERIFIED AT DETAILED DESIGN.

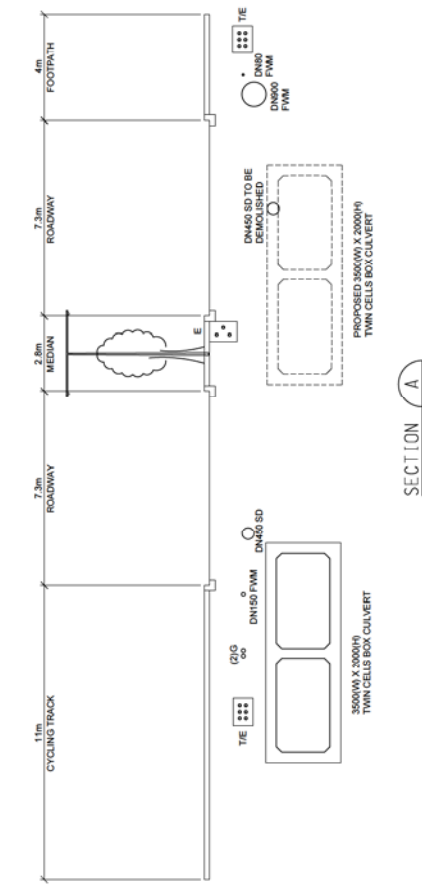
- LEGEND:
- FWM FRESH WATER
 - FLW FLUSHING WATER
 - SS SANITARY SEWER
 - SD STORM DRAIN
 - E ELECTRICAL
 - T TELECOM
 - MPG MEDIUM PRESSURE GAS
 - LPG LOW PRESSURE GAS
 - O.D. OUTER DIAMETER
 - I.D. INNER DIAMETER
 - EXISTING UTILITIES
 - PROPOSED UTILITIES



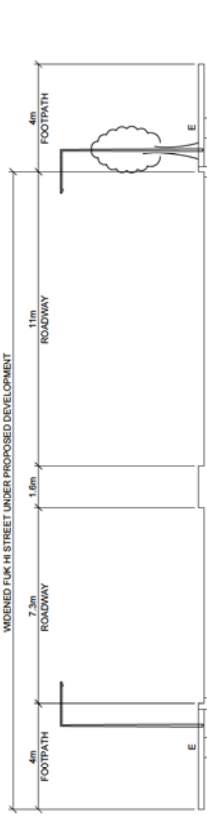
SECTION D
 SCALE N.T.S.
 PH SOUTH ENTRY



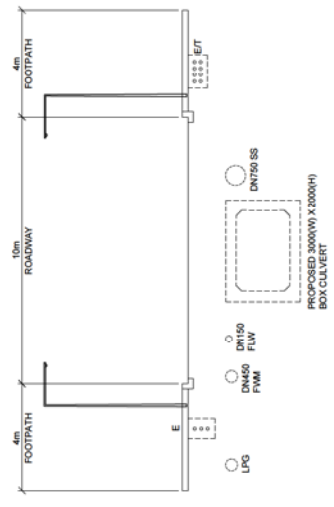
SECTION E
 SCALE N.T.S.
 YLIEE ENTRY



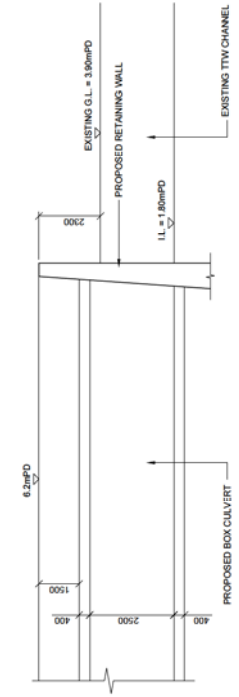
SECTION A
 SCALE N.T.S.
 FUK HI STREET



SECTION B
 SCALE N.T.S.
 FUK HI STREET



SECTION C
 SCALE N.T.S.
 PH NORTH ENTRY



SECTION F
 SCALE N.T.S.
 CONNECTION TO EXISTING TTW CHANNEL

Rev	Description	By	Date
-	FIRST ISSUE	EC	11/13

ARUP

Project title
 Agreement No. CB201/20293
 Planning and Engineering Study for the Public Housing Site
 and Yuen Long Industrial Estate Extension at Wang Chau

Drawing title
 COMMON UTILITIES SECTIONS

Drawing no.	226464/OAP/C/701	Rev.	-
Drawn	EC	Date	11/13
Checked	MB	Approved	ST
Scale	N.T.S.	Status	PRELIMINARY

COPYRIGHT RESERVED



HONG KONG HOUSING AUTHORITY