

westKowloon

西九文化區

香港故宮文化博物館
Hong Kong Palace Museum

2017年11月21日
21 November 2017

傳統中國視藝文化

Traditional Chinese Visual Culture

傳統中國空間文化

Traditional Chinese Spatial Culture

當代香港都市文化

Contemporary Hong Kong Urban Culture

香港都市文化

Hong Kong Urban Culture

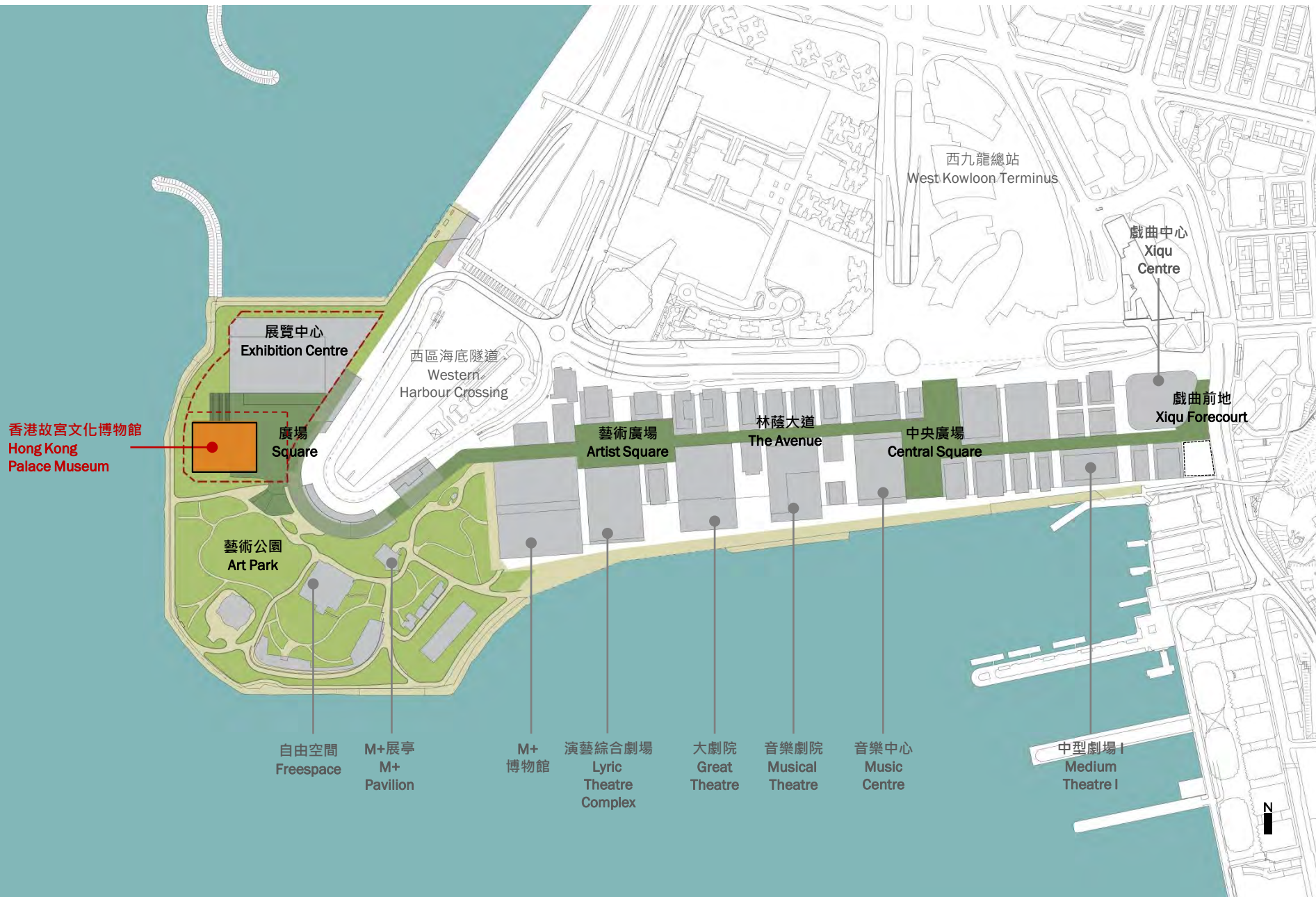
緊湊
Compact

通達
Connected

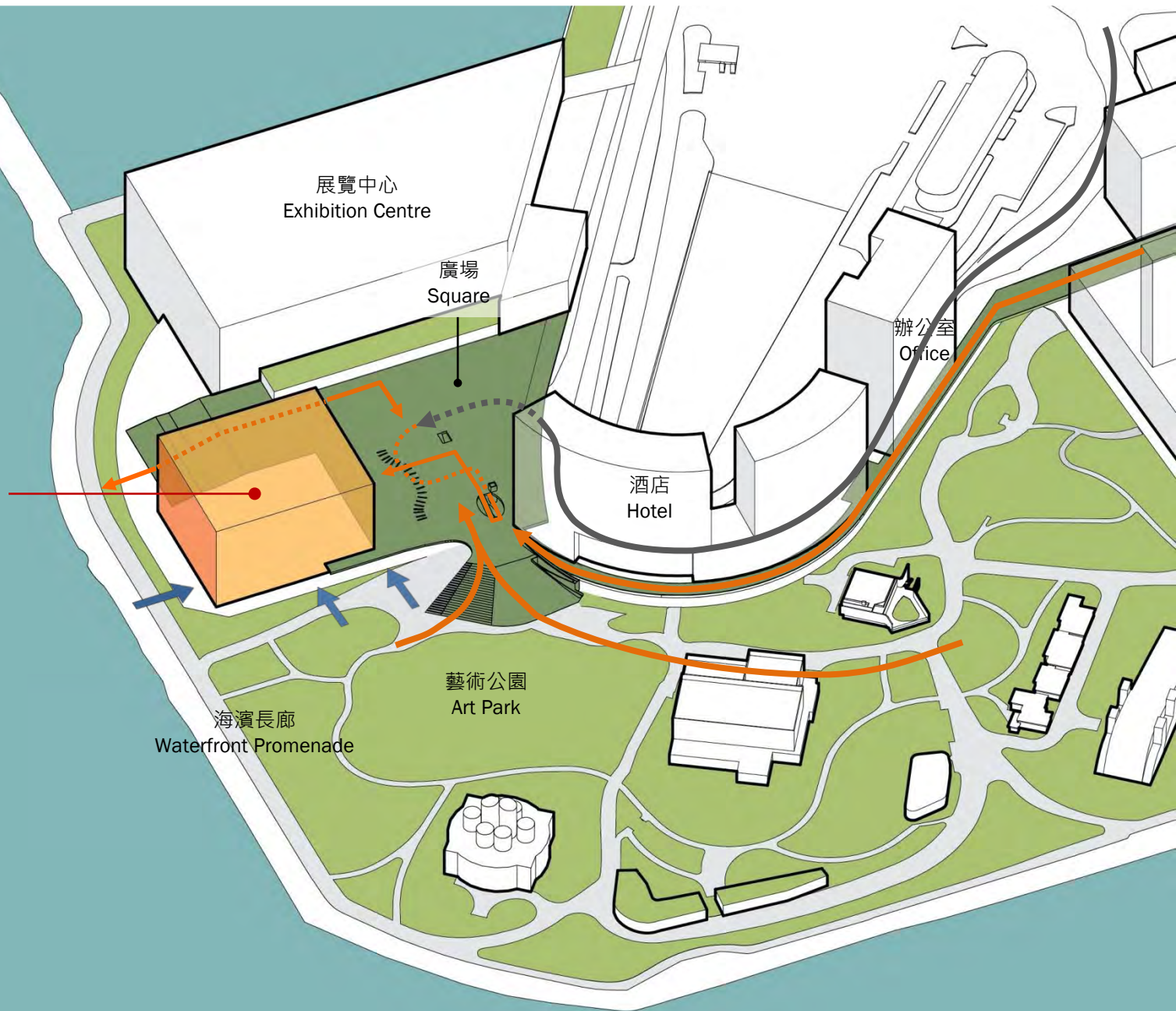
流暢
Fluid

互動
Interactive

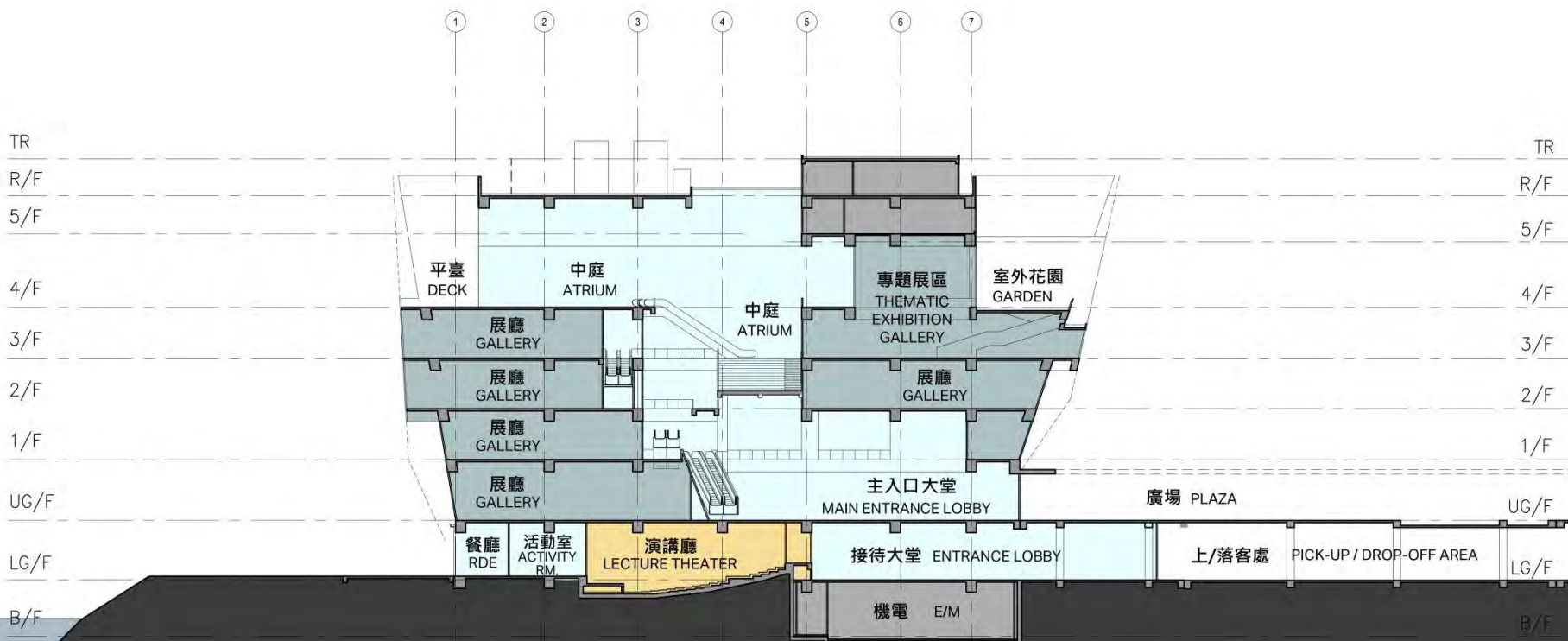
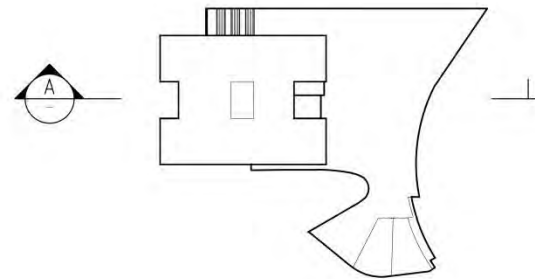
整體規劃及發展概念 | Overall Planning and Development Concept



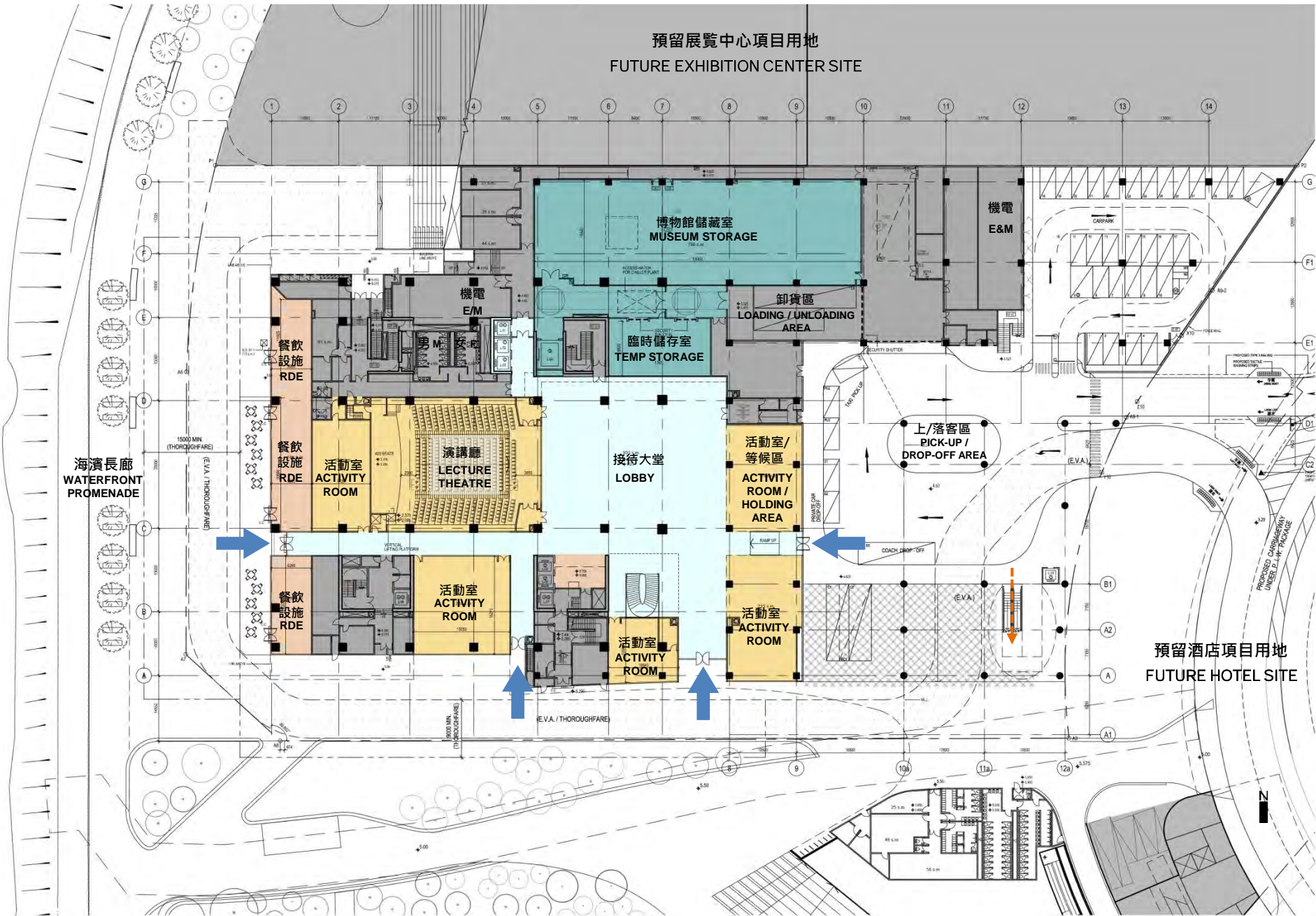
香港故宮文化博物館
Hong Kong
Palace Museum



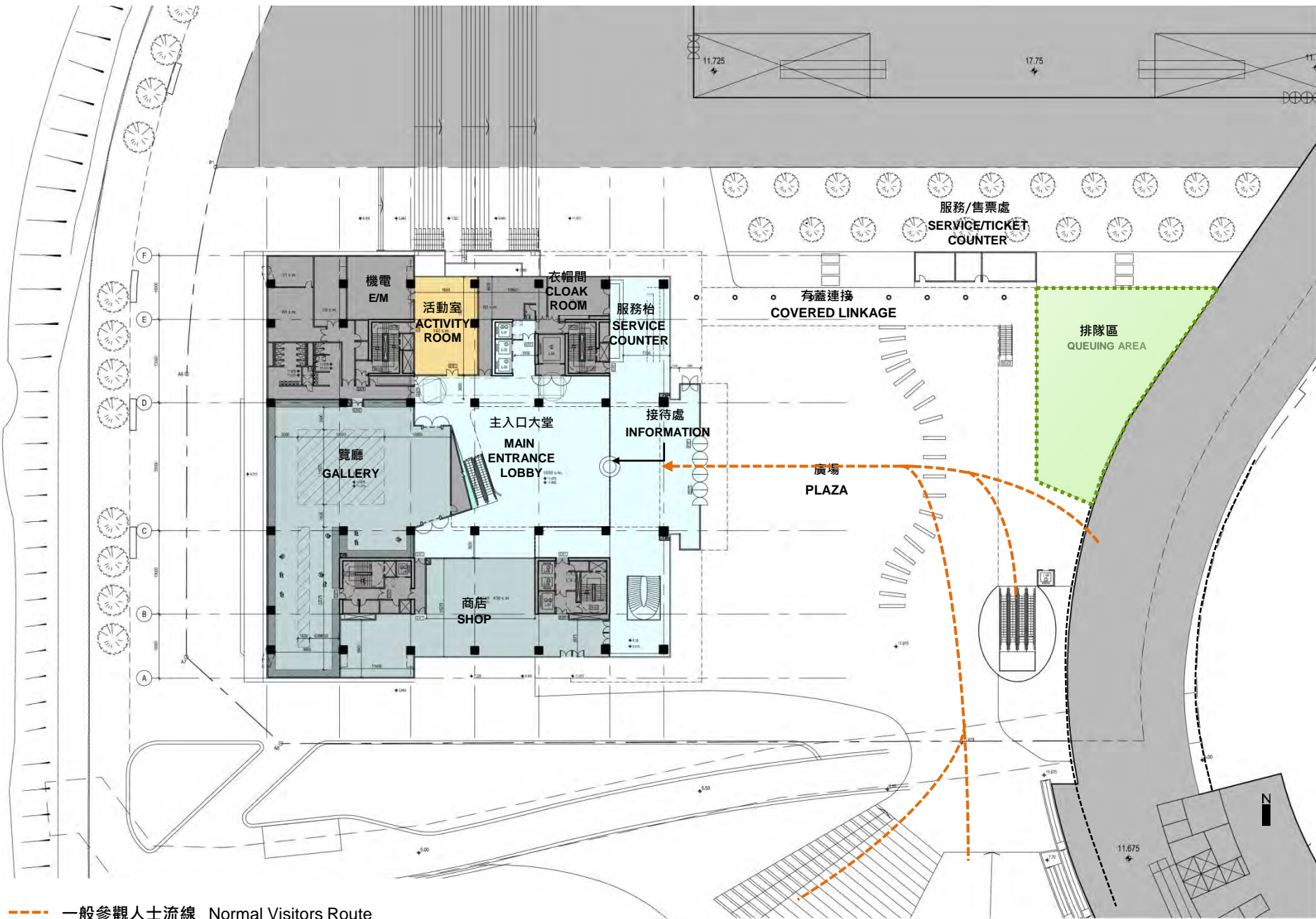
剖面圖 | Section



地面低層平面圖 | Lower Ground Floor Plan

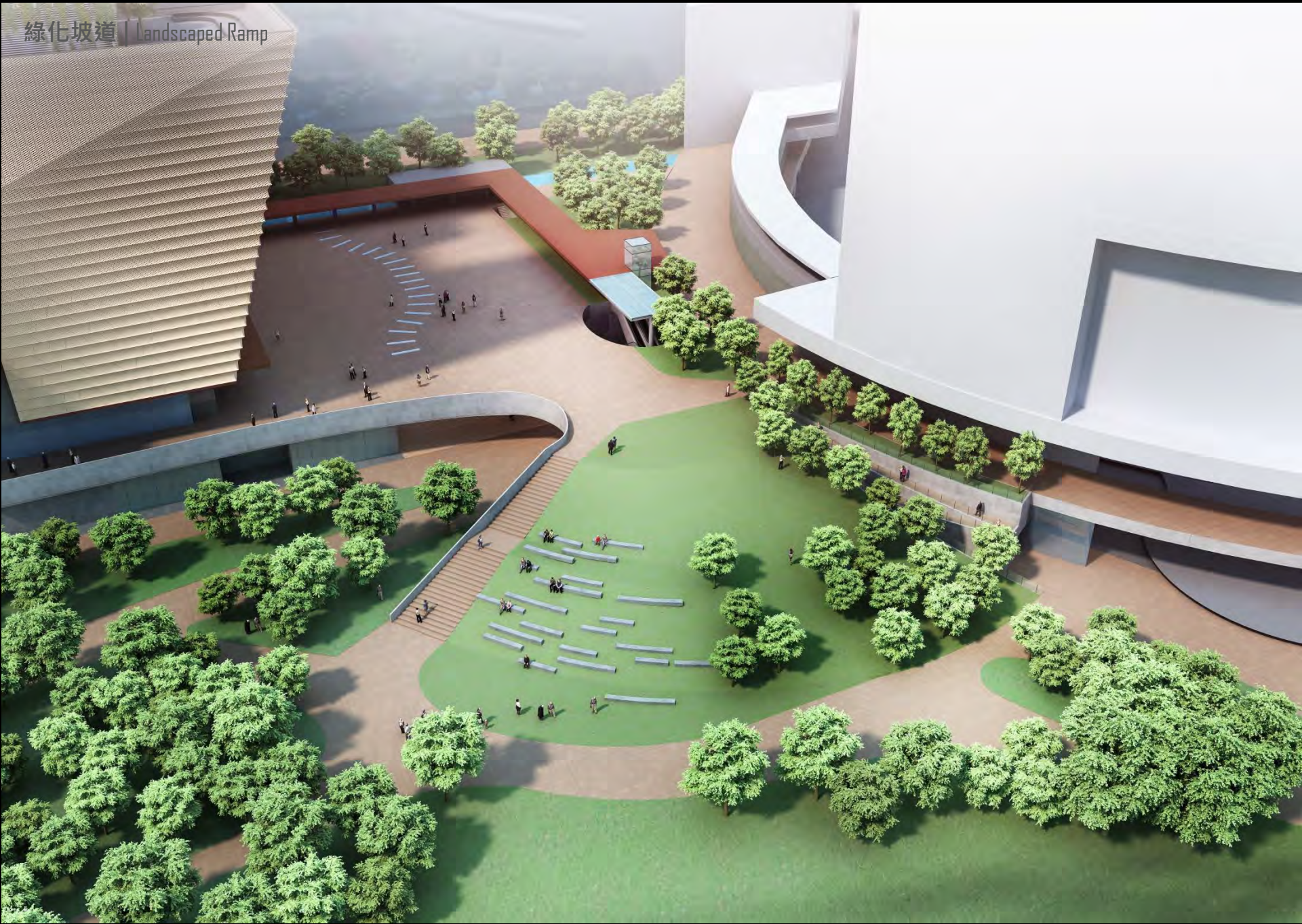


地面層動線 | Proposed Circulation for Ground Floor





綠化坡道 | Landscaped Ramp





傳統中國視藝文化

Traditional Chinese Visual Culture



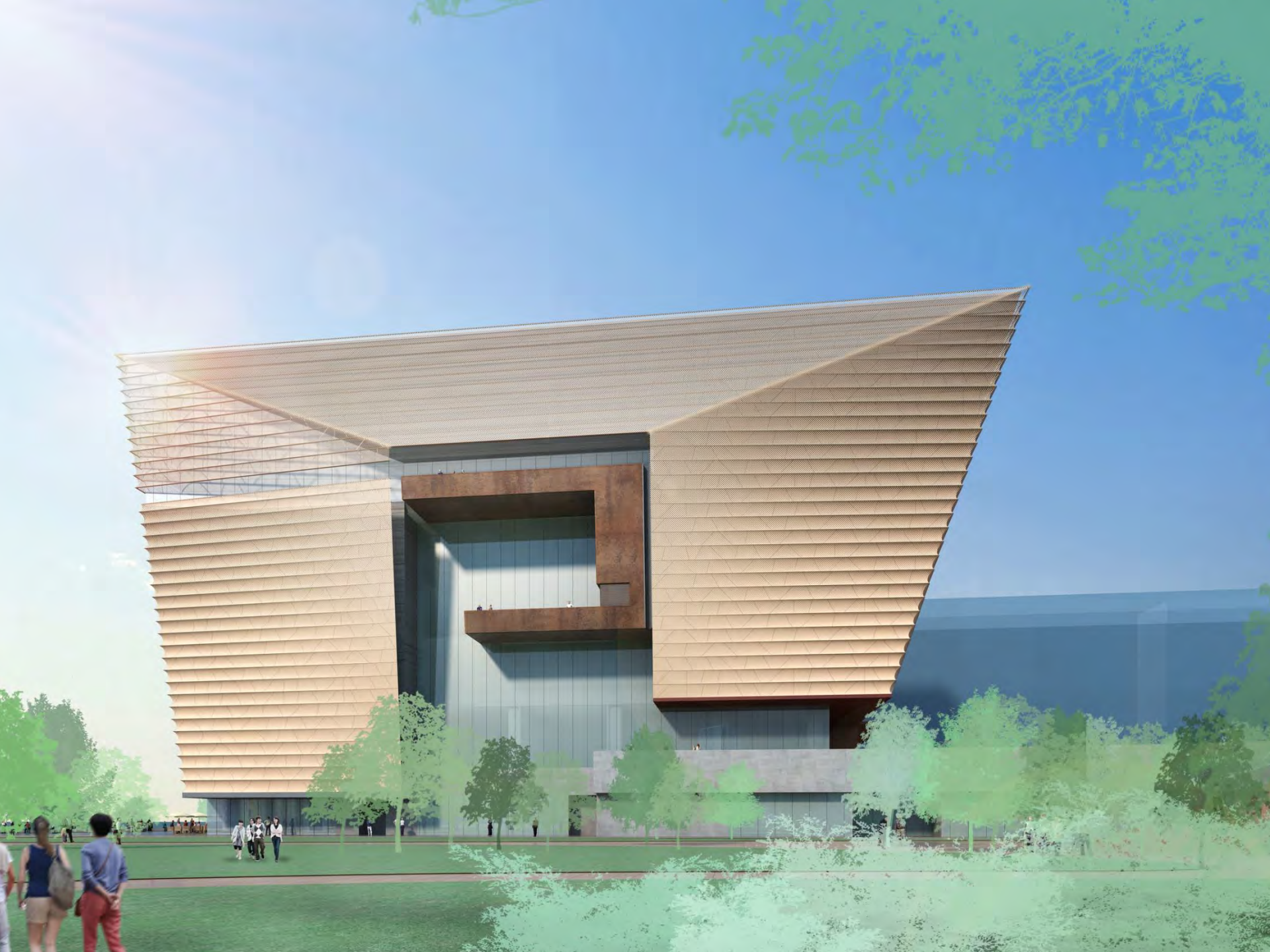
雍容之氣度 Majesty in Poise

寫意之平衡 Serenity in Balance

獨特之肌理色彩 Uniqueness of Colours and Textures

內斂之華麗 Subtlety in Glamour

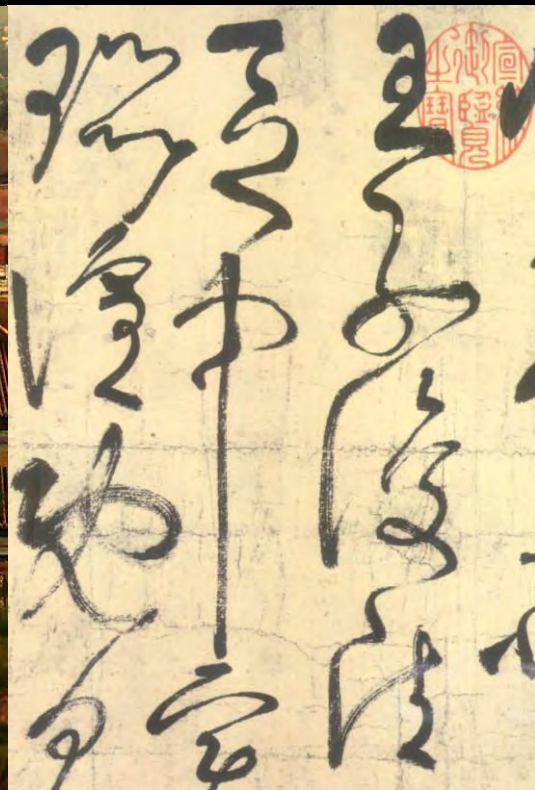
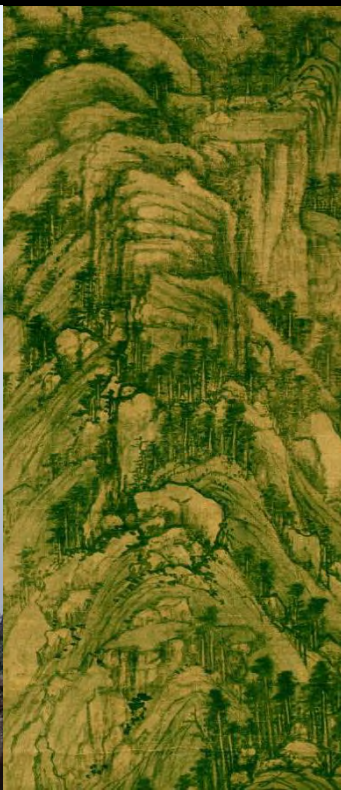






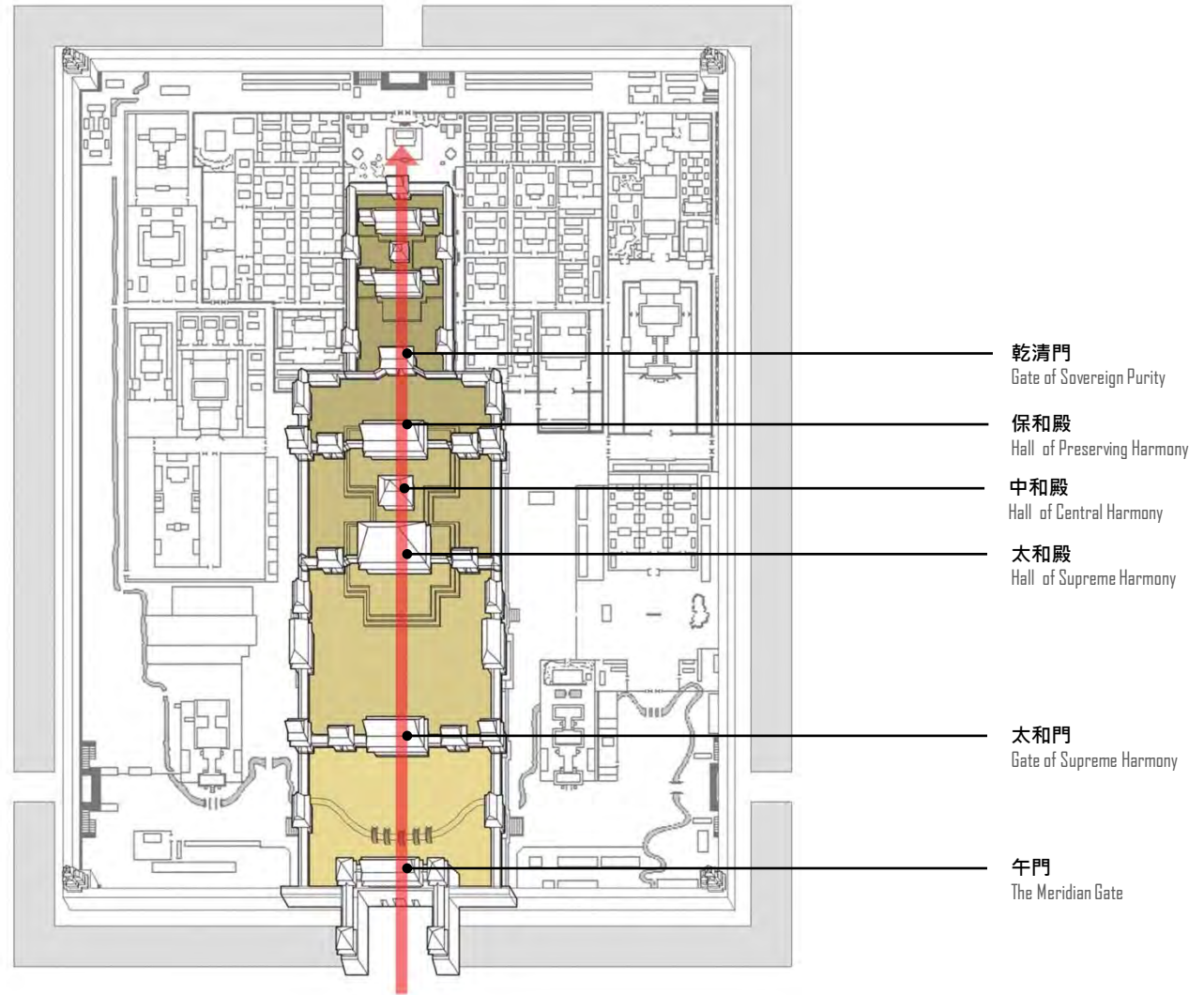
傳統中國空間文化

Traditional Chinese Spatial Culture

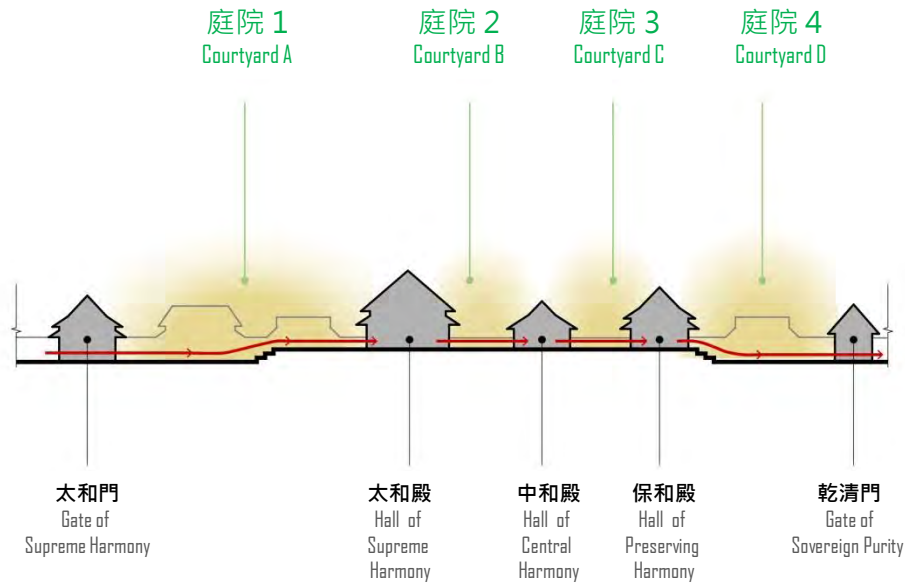


飄逸引人之層次
流暢有序之排列

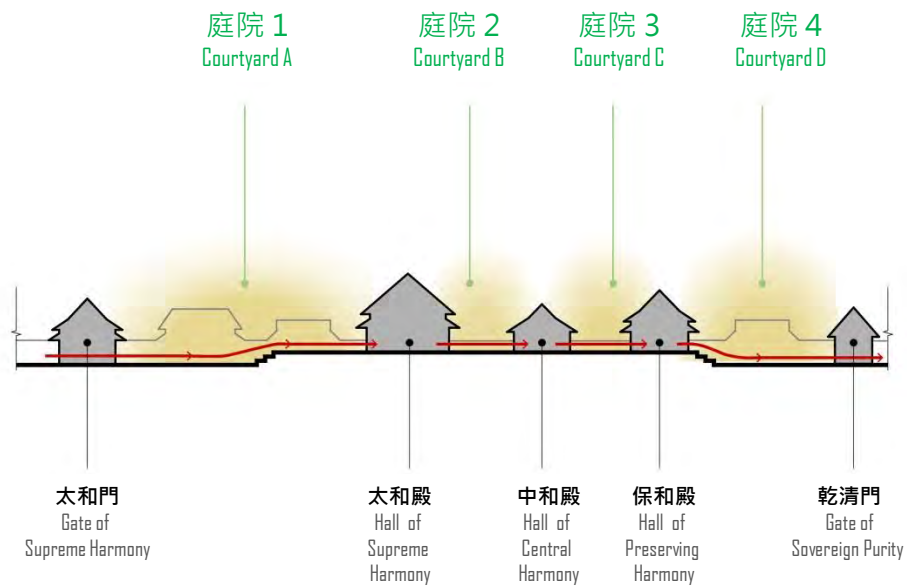
Poetry in Layering
Fluidity in Sequence



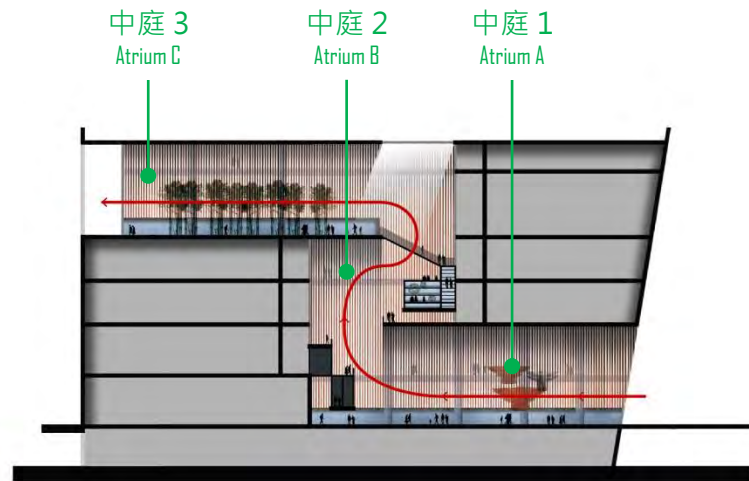
北京紫禁城中軸空間序列
Spatial Configuration of Forbidden City



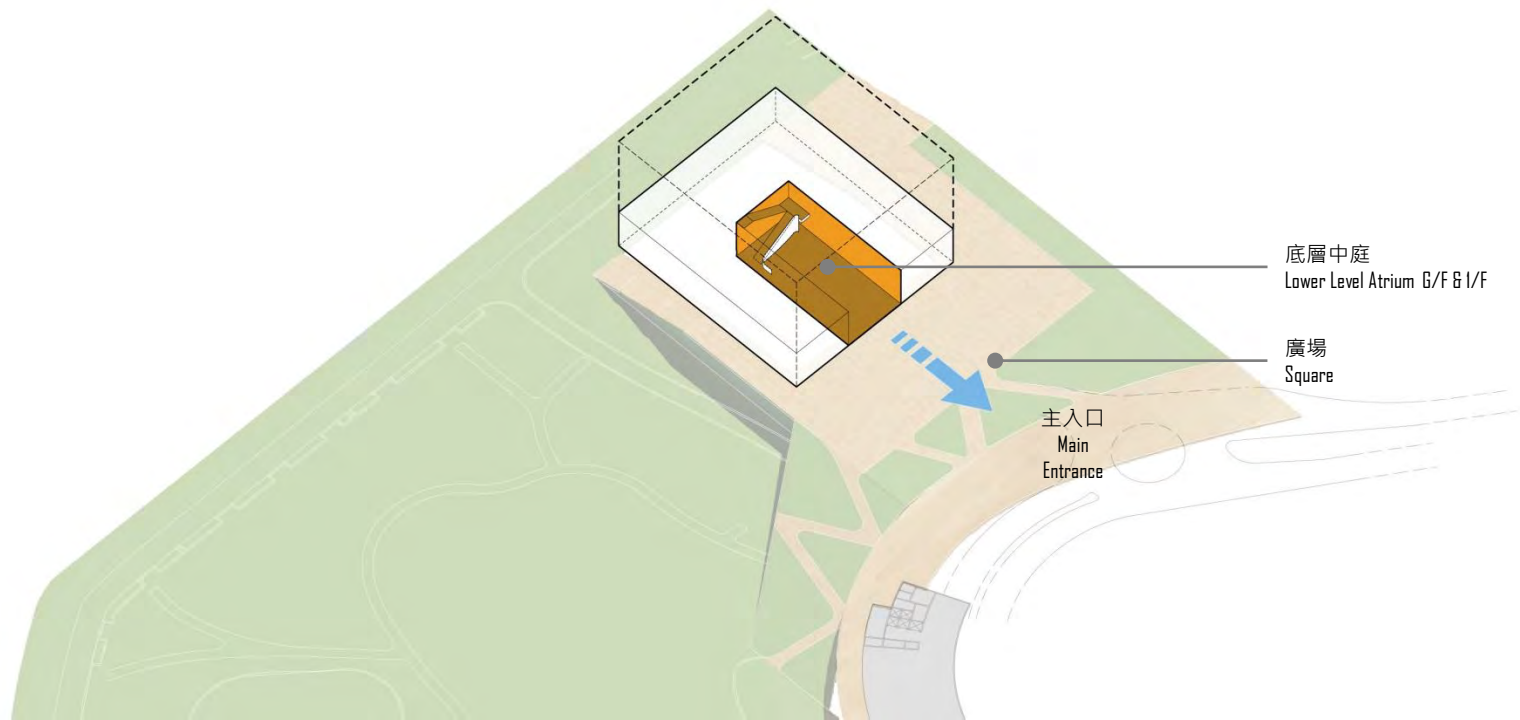
北京紫禁城 – 中軸空間平面遞進
Horizontal Spatial Sequence of Courtyards

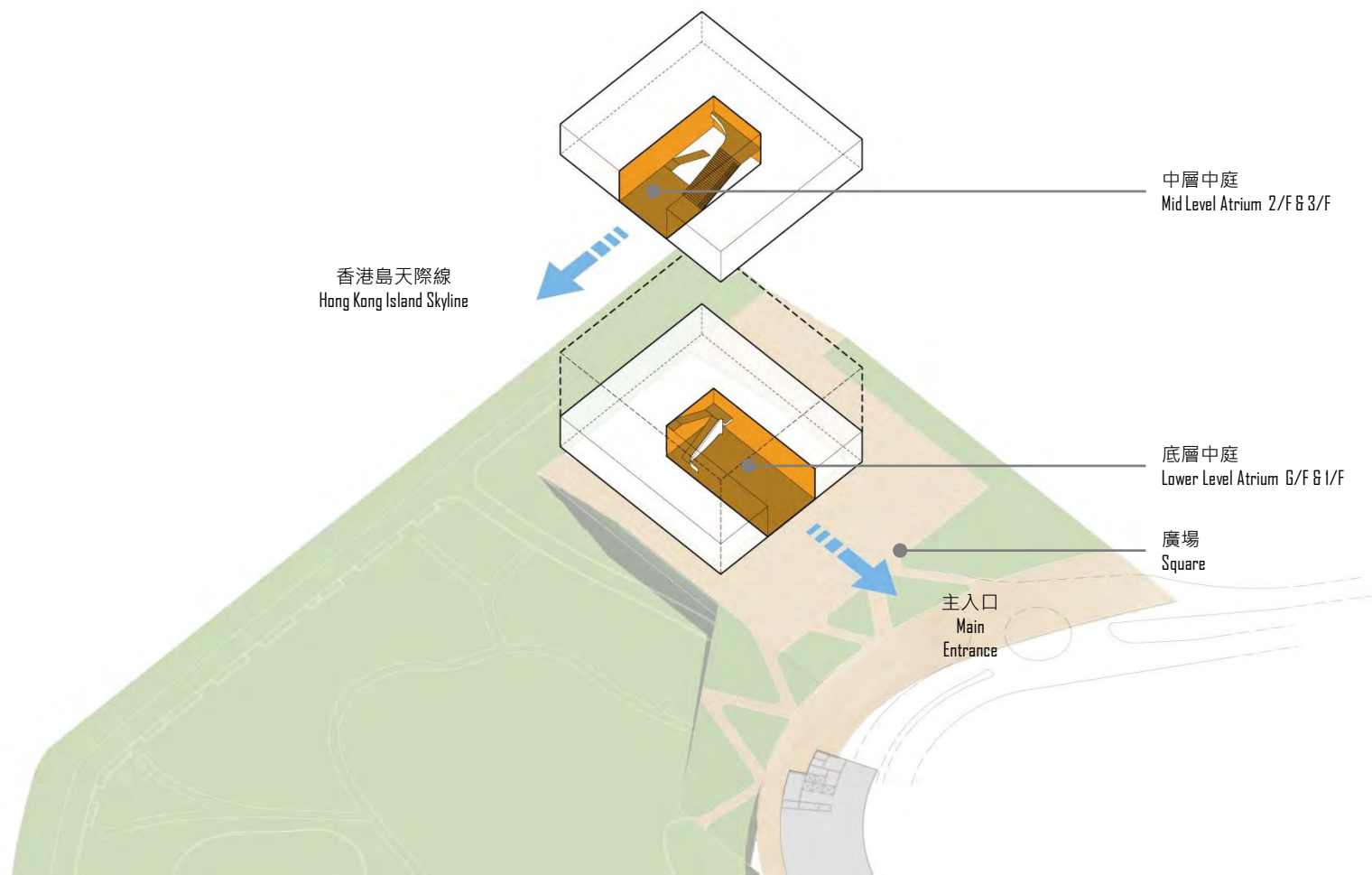


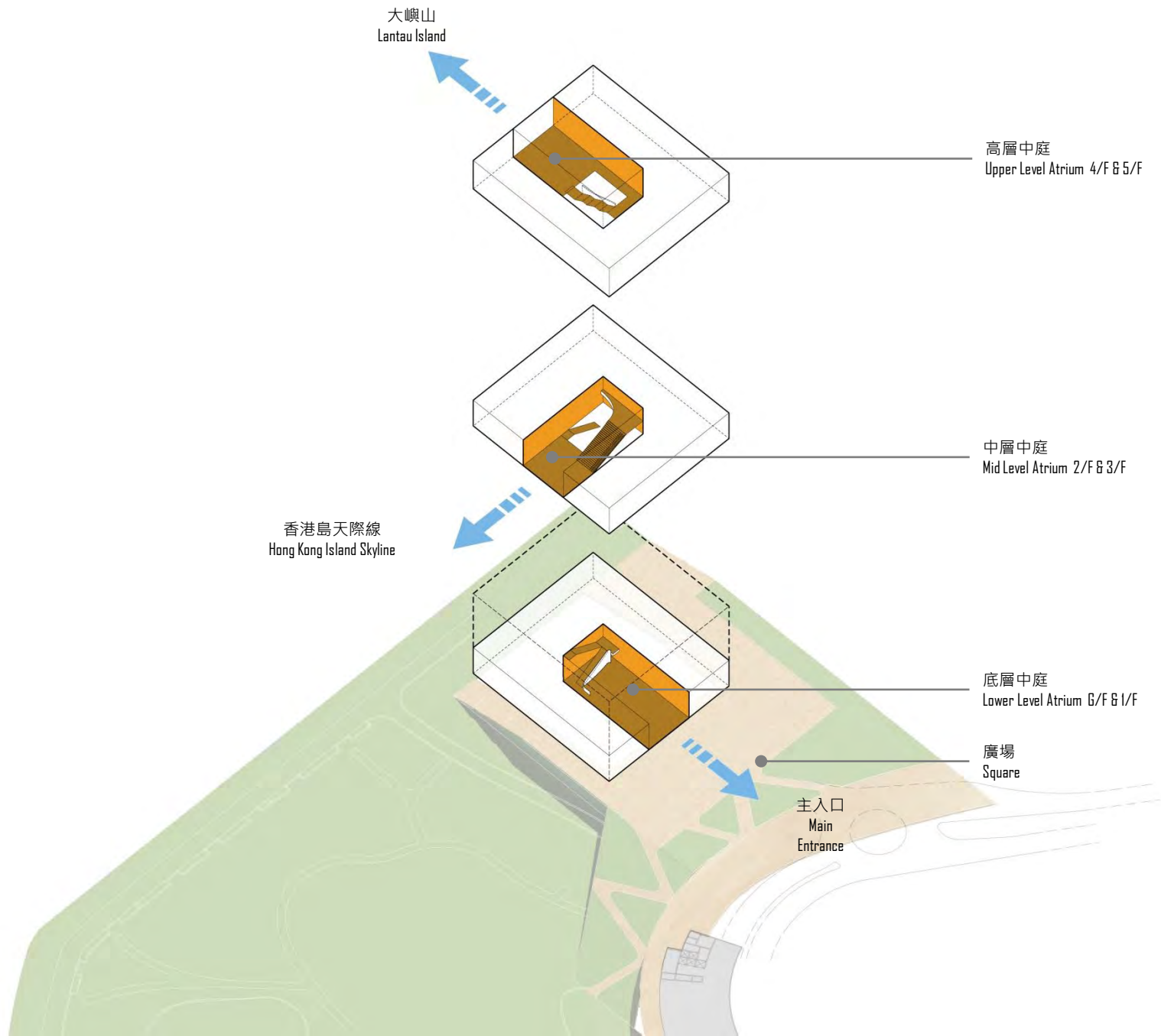
北京紫禁城 – 中軸空間平面遞進
Horizontal Spatial Sequence of Courtyards



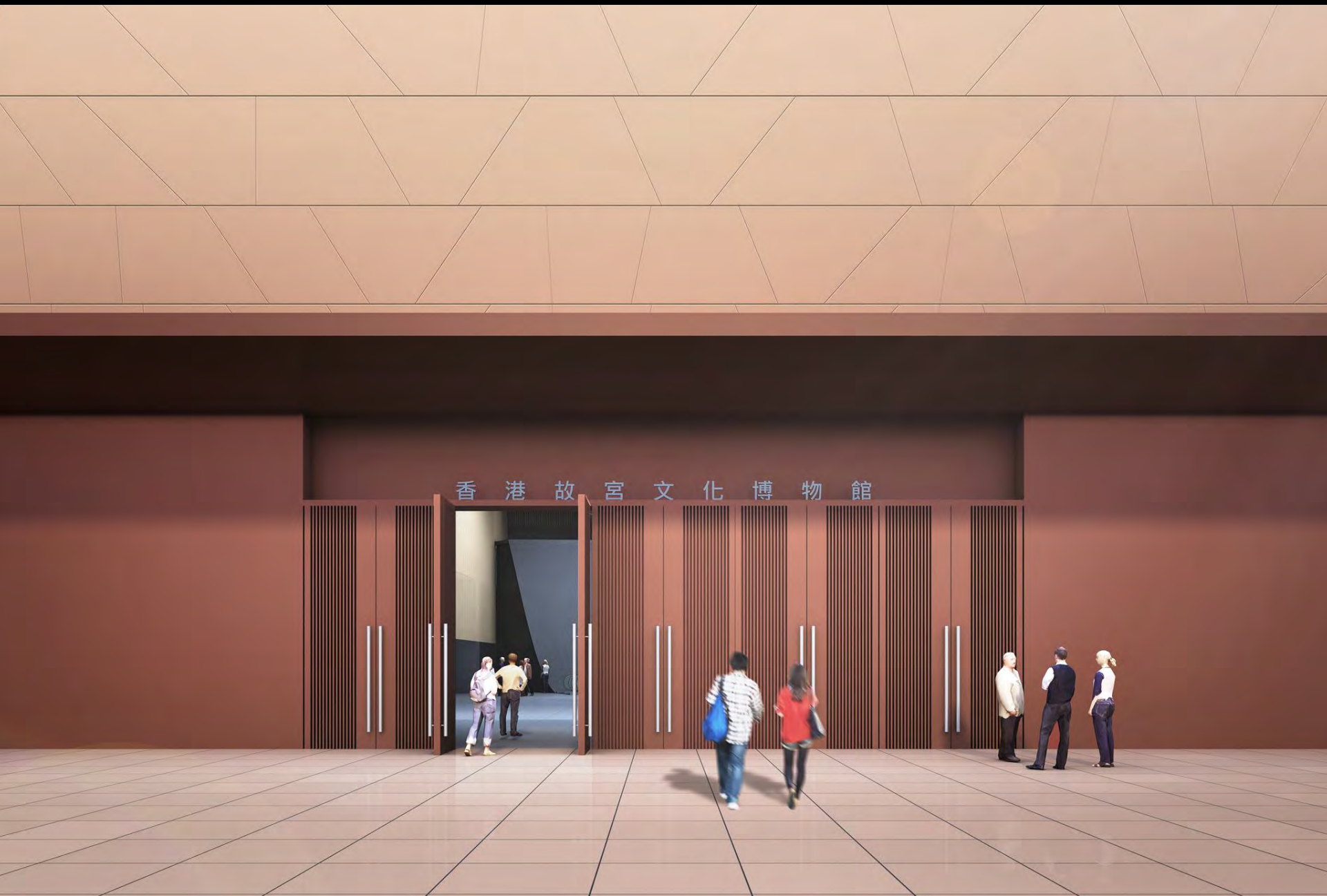
香港故宮文化博物館 - 中庭空間垂直遞進
Vertical Spatial Sequence of Atria



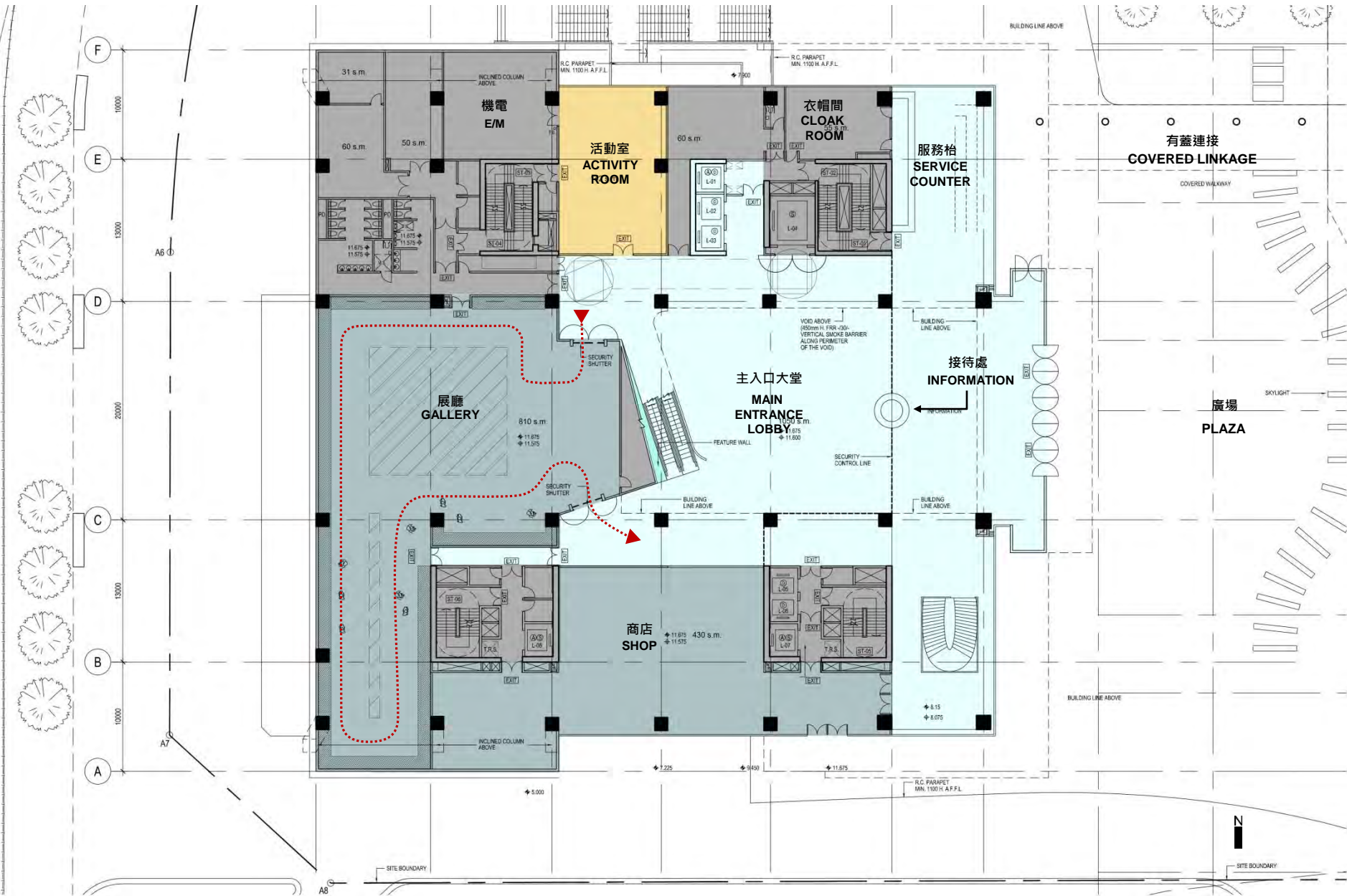




香 港 故 宮 文 化 博 物 館

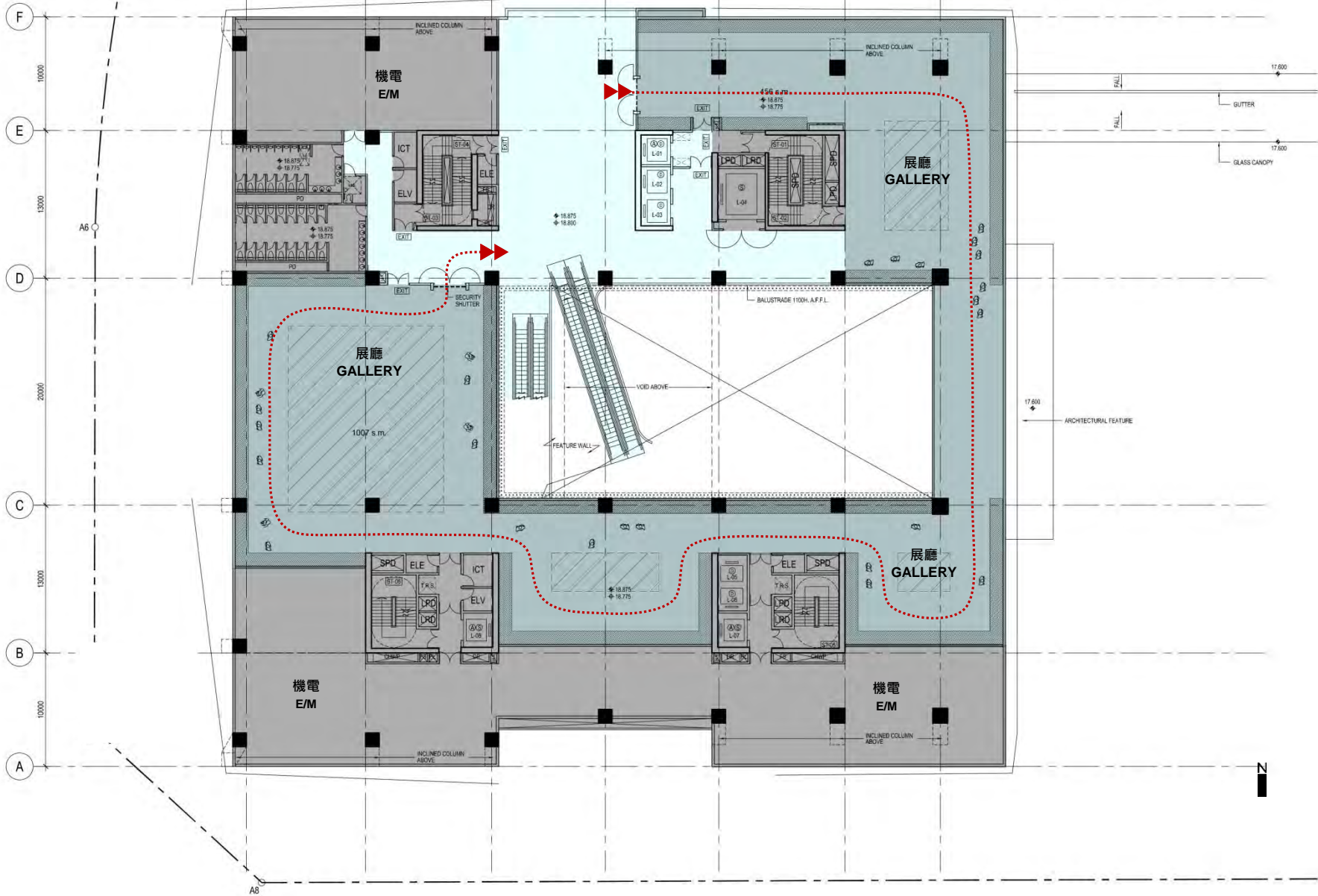


地面層平面圖 | Ground Floor Plan

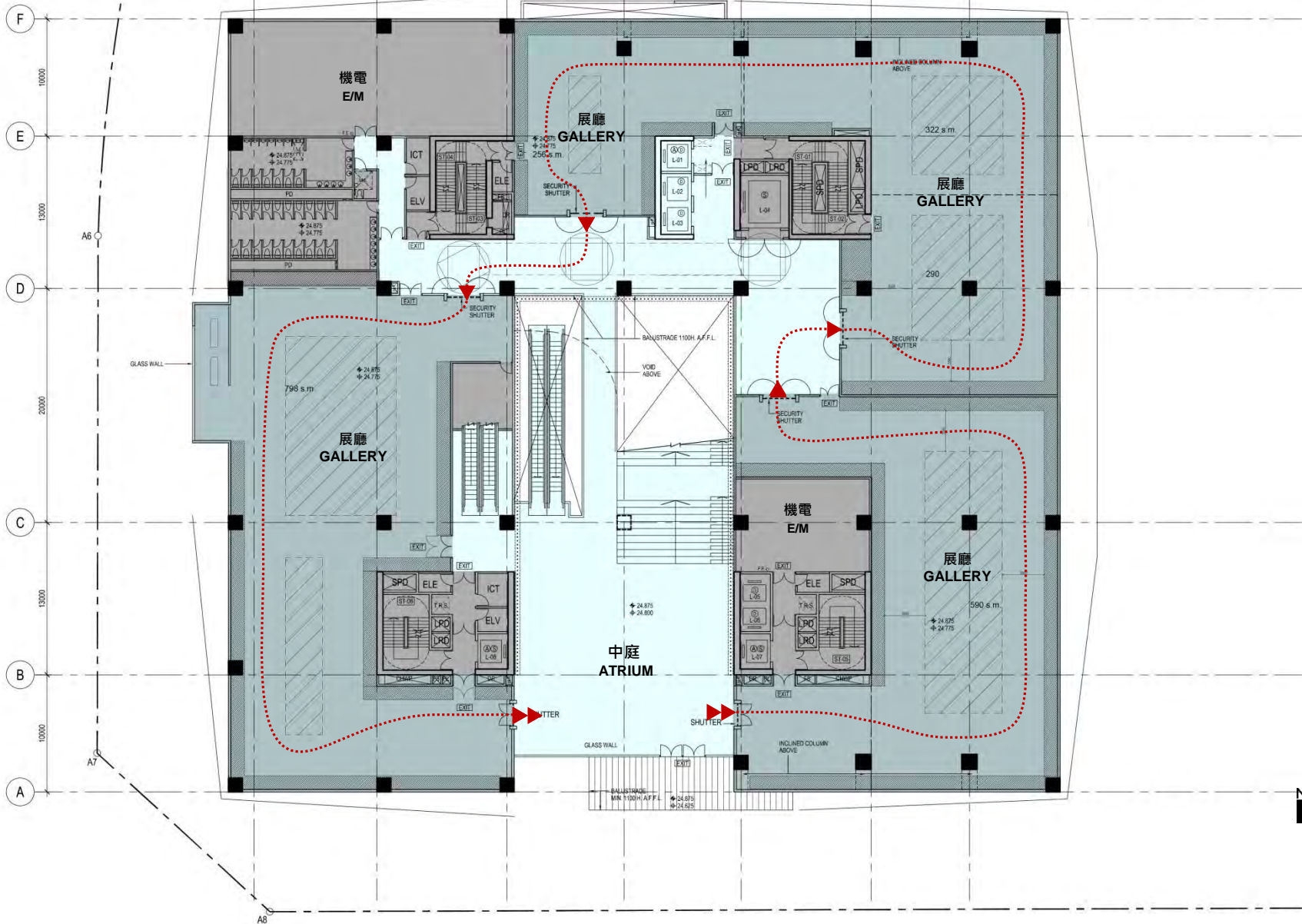




一樓平面圖 | 1/F Plan,



二樓平面圖 | 2/F Plan





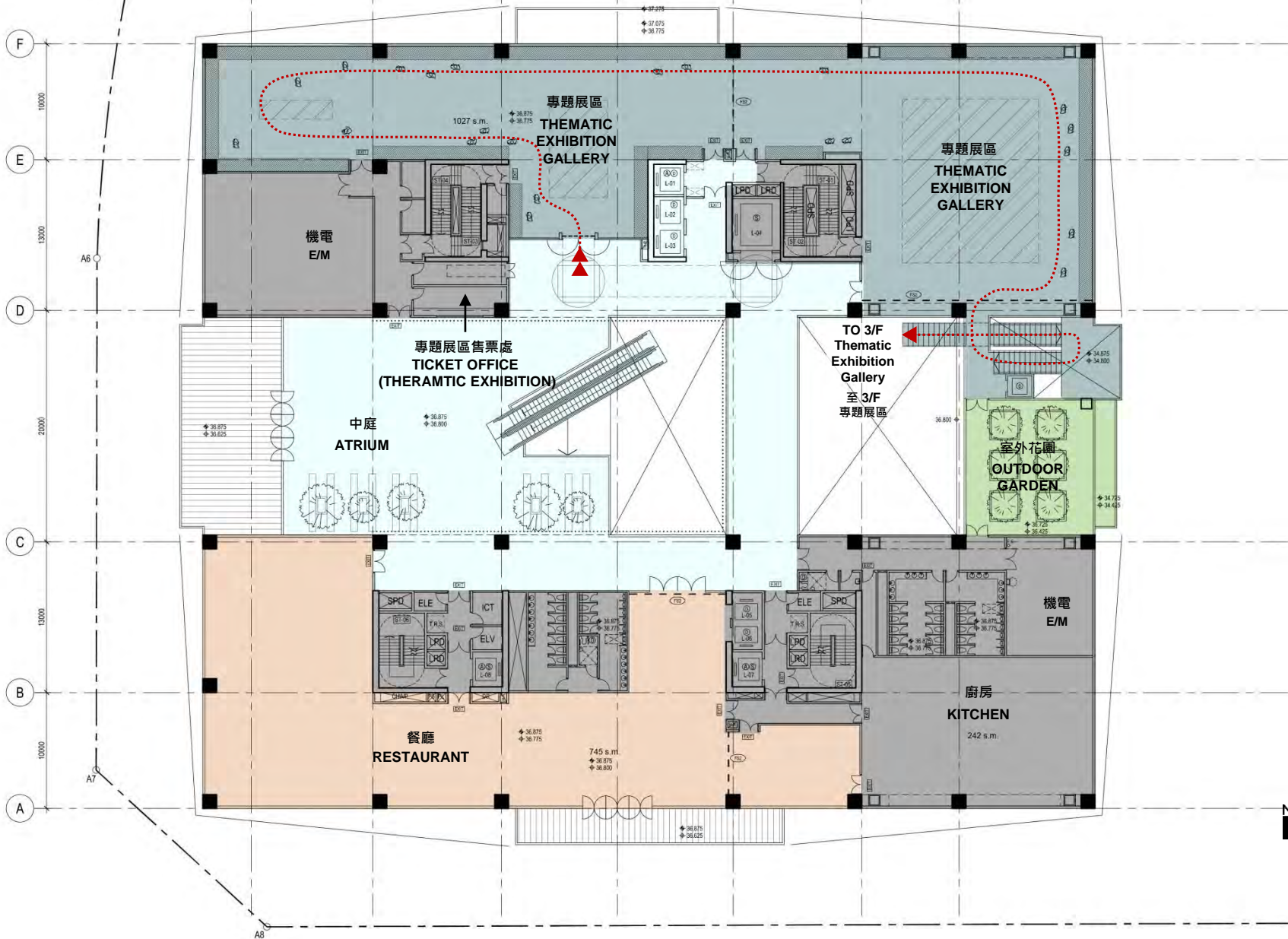




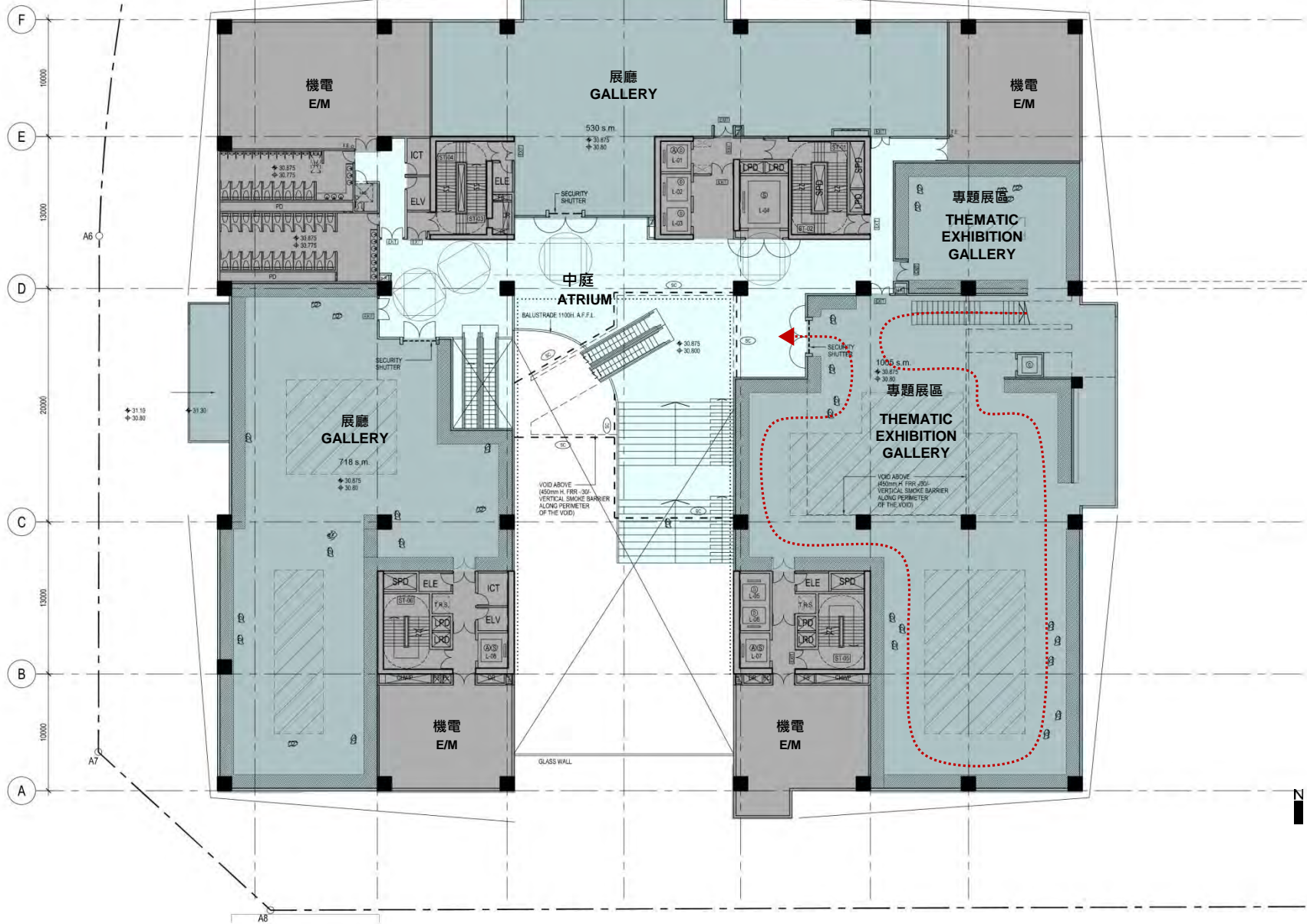




四樓平面圖 | 4/F Plan



三樓平面圖 | 3/F Plan











多謝
THANK YOU

LegCo Joint Subcommittee to Monitor the Implementation of the West Kowloon Cultural District Project

立法會監察西九文化區計劃推行情況聯合小組委員會



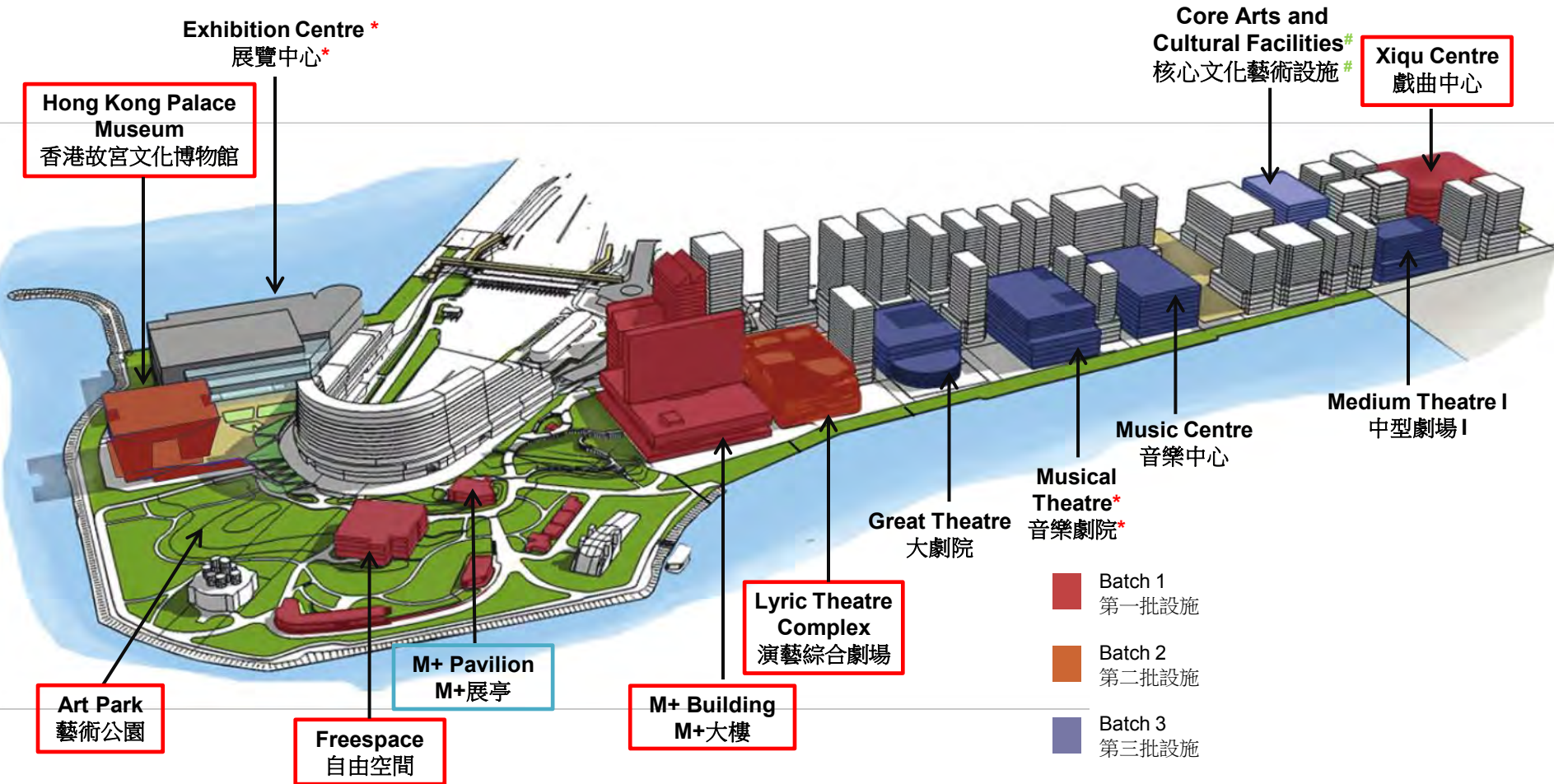
Update on the Hardware Development
of the West Kowloon Cultural District

西九文化區硬件發展的最新進展

21-11-2017

WKCD Facilities

西九文化區設施



* Subject to private sector funding

* 需視乎私營機構資金

Future development to be reviewed in due course

未來發展需再作研究

Works Commencement : December 2014

動工日期：2014年12月

Target Opening : Late 2018

預計啟用日期：2018年年底

Xiqu Centre 戲曲中心

Main Works Progress

主工程進度



westKowloon

西九文化區

Xiqu Centre 戲曲中心

Main Works Progress

主工程進度



General view for Atrium ceiling installation 中庭天花安裝



General view for façade with fin installation 外觀及終飾安裝



Mechanical, Electrical, Plumbing (MEP) works in progress
機電工程安裝進行中



General view for aluminium cladding wall
鋁合金骨架外牆

Works Commencement : Mid-2016

動工日期：2016年年中

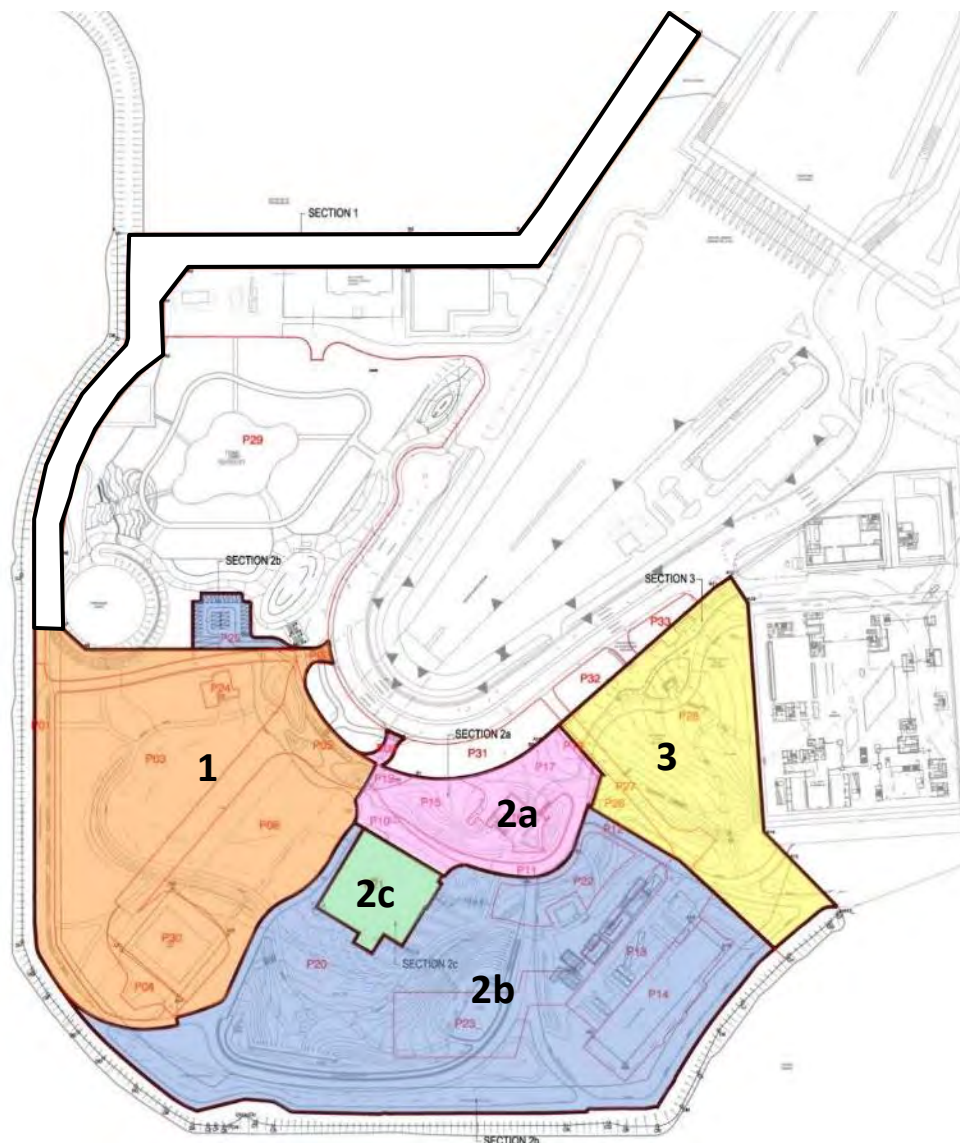
Target Completion (three phases) : End 2017, Q3 2018 & End 2018

預計落成日期 (三個階段)：2017年年底、2018年第三季及2018年年底

Art Park 藝術公園

Phasing Plan

分階段發展方案



Art Park 藝術公園

Overall Progress 整體進度



General View of Art Park
藝術公園概覽

Art Park 藝術公園

Main Works Progress

主工程進度



General view for Freespace
自由空間概覽



General view for RDE and Freespace
自由空間及零售／餐飲／消閒設施的工程概覽

Art Park 藝術公園

Main Works Progress

主工程進度



Art Park Promenade at Section 1
藝術公園海濱長廊第一階段工程

Works Commencement : 4th Quarter 2015

動工日期：2015年第4季

Target Completion : 2019

預計落成日期：2019年

M+

Main Works Progress

主工程進度



Aerial view of the M+ site

M+博物館工地鳥瞰相片

M+

Main Works Progress

主工程進度



M/F wall, beam & slab construction between T1 & T2
T1 和 T2 桁架之間夾樓層建築



General view for T3 & T4 mega truss
T3 和 T4 桁架概覽



3/F slab at Zone F (roof terrace)
F區的3樓板層 (頂樓平台)



District Cooling System intake pipe (outside DCS Plant Room)
區域製冷系統進水管 (區域製冷機房外)

Foundation Works Commencement : Jan 2016

地基工程動工日期：2016年1月

Foundation Works Completed

地基工程已完成

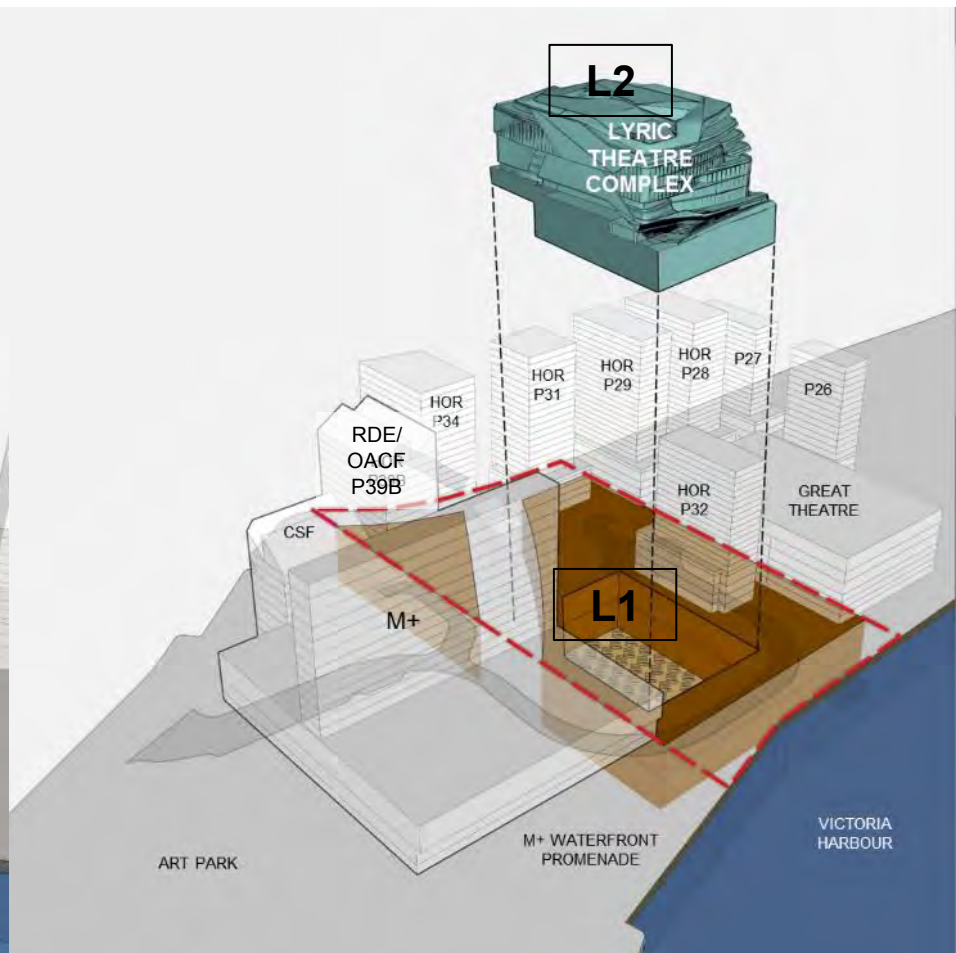
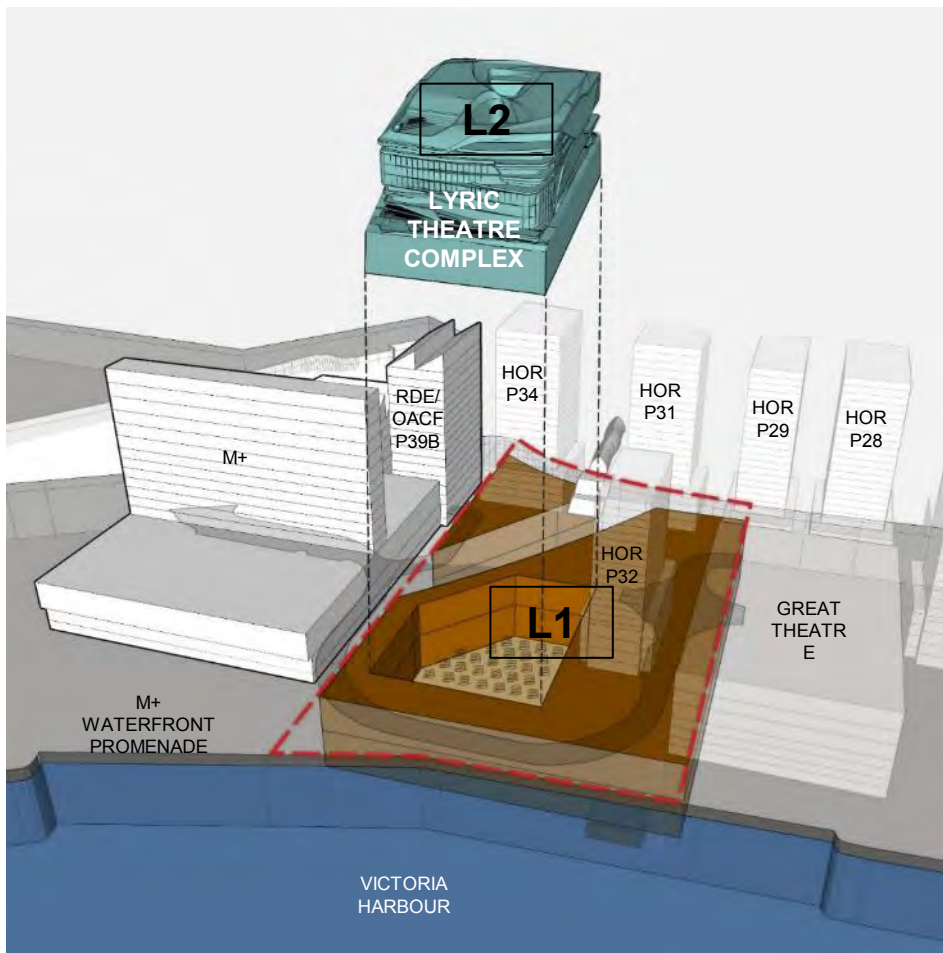
Lyric Theatre Complex & Integrated Basement 演藝綜合劇場及綜合地庫 Overall Progress 整體進度



Lyric Theatre Complex & Integrated Basement

演藝綜合劇場及綜合地庫

L1 & L2 Scope 範圍



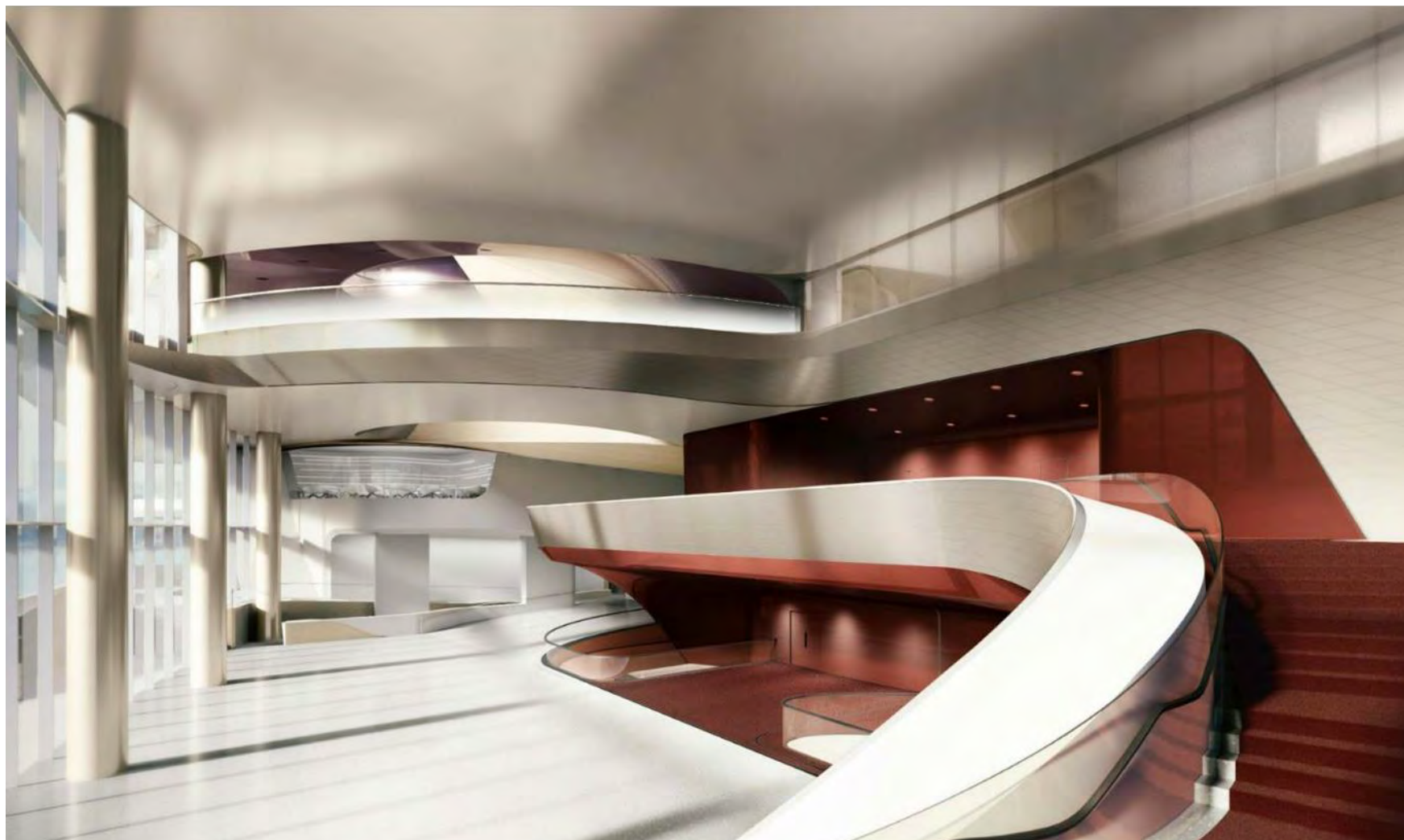
westKowloon

西九文化區

Lyric Theatre Complex & Integrated Basement

演藝綜合劇場及綜合地庫

Digital Rendering 數碼繪製圖



View from the east staircase to the balcony level 從東面樓梯望向觀眾席樓座

Lyric Theatre Complex & Integrated Basement

演藝綜合劇場及綜合地庫

Digital Rendering 數碼繪製圖



View towards stage from auditorium 從觀眾席望向舞台

Lyric Theatre Complex & Integrated Basement

演藝綜合劇場及綜合地庫

Digital Rendering 數碼繪製圖



View towards auditorium from stage 從舞台望向觀眾席

Lyric Theatre Complex & Integrated Basement

演藝綜合劇場及綜合地庫

Digital Rendering 數碼繪製圖

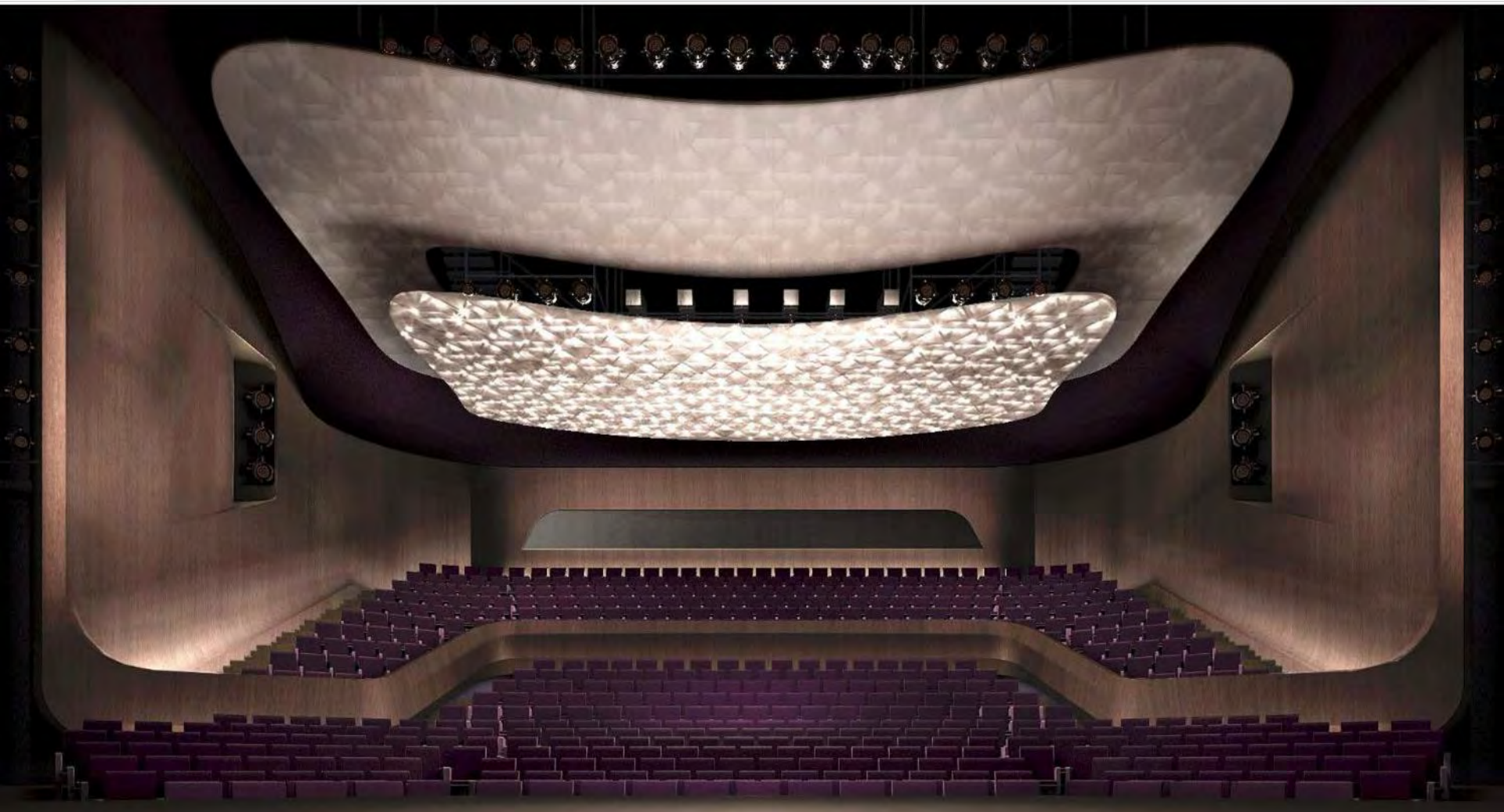


View towards stage from auditorium at the Medium Theatre 中型劇場內從觀眾席望向舞台

Lyric Theatre Complex & Integrated Basement

演藝綜合劇場及綜合地庫

Digital Rendering 數碼繪製圖



View from stage towards auditorium at the Medium Theatre 中型劇場內從舞台望向觀眾席

Works Commencement : July 2015

動工日期：2015年7月

Target Completion : early 2018

預計完工日期：2018年年初

PIW (Package 1)

基建工程 (第一組工程合約)

Overall Progress 整體進度



Portion A – At Grade Road
A 部分 – 道路



Portion B – Austin Road West
B 部分 – 柯士甸道西



Portion C - Xiqu Centre
C 部分 – 戲曲中心



Portion D – KGO Water Mains
D 部分 – 九龍政府合署製冷管



多謝
THANK YOU