

ITEM FOR ESTABLISHMENT SUBCOMMITTEE OF FINANCE COMMITTEE

HEAD 33 – CIVIL ENGINEERING AND DEVELOPMENT DEPARTMENT

Subhead 000 Operational Expenses

Members are invited to recommend to the Finance Committee the creation of the following permanent posts in the Civil Engineering and Development Department with immediate effect upon approval of the Finance Committee –

1 Government Engineer
(D2) (\$164,500 - \$179,850)

1 Chief Engineer
(D1) (\$138,500 - \$151,550)

PROBLEM

There is a need for additional directorate support in the Civil Engineering and Development Department (CEDD) to take forward and manage technical studies, and site formation and infrastructure works associated with public housing developments on a long-term basis.

PROPOSAL

2. To cope with the additional workload arising from public housing developments, we propose to create two permanent directorate posts, i.e. one Government Engineer (GE) (D2) and one Chief Engineer (CE) (D1) in CEDD with immediate effect upon approval of the Finance Committee. We will also take the opportunity to rationalise the distribution of duties and responsibilities of some directorate posts in the Civil Engineering Office (CEO) of CEDD.

/JUSTIFICATION

JUSTIFICATION

New Public Housing Supply Target

3. The Government announced the Long Term Housing Strategy (LTHS) in 2014, which adopts a ‘supply-led’ principle, with a view to addressing the problem of housing demand-supply imbalance and rebuilding the housing ladder. According to the framework established under LTHS, the Government will continue to update the long-term housing demand projections annually and present a rolling ten-year housing supply target, which will serve as a planning guide for the Government to identify land for housing developments. The Chief Executive’s 2017 Policy Address states that the Government will focus on supply and based on LTHS¹, step up its efforts in increasing supply of housing units. The Government will spare no effort to address the demand for public housing in the community, and has to overcome the challenges and workload implications on various fronts.

4. The Government is adopting a multi-pronged approach to increase housing land supply. One of the measures is to conduct land use reviews on ‘Government, Institution or Community’, ‘Green Belt’, ‘Industrial’ and other non-residential zones or brownfield areas, for identifying potential sites suitable for residential use. With the dedicated efforts in land use reviews in the past years, the Government has identified a considerable number of potential sites suitable for public housing use.

5. For those sites identified for public housing developments, the Government is pressing ahead with site formation and the provision of supporting infrastructure. As most of these potential sites require amendment of land uses in the concerned Outline Zoning Plans under the Town Planning Ordinance (Cap. 131), relevant bureaux and departments (b/ds) are required to establish the viability of public housing developments through comprehensive traffic, environmental, geotechnical and other engineering studies to support zoning amendments. It is also of paramount importance that site formation and major infrastructure including roads, water supply, sewers, drains, etc. are properly planned, designed and completed in time to support the public housing developments.

6. For potential public housing sites, CEDD has been conducting technical studies to support rezoning exercises, necessary statutory processes and public consultation, and carrying out site formation and infrastructure works in

/a

¹ According to the LTHS Annual Progress Report 2017, the Government has identified land for the construction of about 237 000 public housing units for the ten-year period from 2018-19 to 2027-28. This lags behind the ten-year supply target of 280 000 units.

a timely manner so as to deliver the formed sites to the Hong Kong Housing Authority (HA) for public housing developments. At present, CEDD is undertaking 59 public housing development projects. In order to address the long-term public housing demand, CEDD is further tasked by the Transport and Housing Bureau to undertake technical studies, site formation and infrastructure works for 11 new potential sites (the New Sites) in 2018-19. With the increase in staff resources, it is expected that the New Sites can also be delivered to HA in phases starting as early as 2028.

7. On the work arising from the 59 public housing development projects and the New Sites, it is forecasted that manpower resources requirement for CEO of CEDD will steadily increase as the projects progress from the stage of conducting technical studies to the stages of investigation, design and construction. Manpower resources requirement will be the highest in 2019 and stay at a high level till around 2030. It is also noted that there are still some other potential sites in the pipeline for which no planned resources have been allocated and some of these sites involve highly technical difficulties, such as difficult terrain and major resettlement need, which have to be examined and developed with input from directorate officers upon the gradual completion of the projects in hand. In this connection, more directorate support will be required in CEO to provide necessary dedicated leadership before 2019, in particular on liaison and consultation with stakeholders, and to ensure steady production of formed sites for public housing development in the long term.

Need for One Permanent GE (D2) Post in CEDD

8. Currently, public housing development projects are mainly undertaken by Housing Projects 1 Unit (HP1U) and Housing Projects 2 Division (HP2D) under CEO, which are headed by a Non-Civil Service Contract (NCSC) staff (with experience no less than a Senior Engineer) and CE/Housing Projects 2 (a supernumerary CE post ranked at D1 level) respectively. HP1U and HP2D are under the supervision of Deputy Head of Civil Engineering Office (Port & Land) (DH(P&L)) and Deputy Head of Civil Engineering Office (Project & Environmental Management) (DH(P&EM)), both ranked at GE (D2) level, respectively (see the existing organisation chart of CEO of CEDD at Enclosure 1).

Encl. 1

9. At present, the two deputy heads are required to oversee four different divisions/units each. In addition to public housing development projects, the two deputy heads are also responsible for port works, fill management, universal accessibility programme, pier improvement, columbarium and crematorium projects, and other site formation and infrastructure works. As HP1U is headed by a NCSC staff, DH(P&L) is also responsible for high-level administration and direct

/steer

steer of the unit. The arrangement is undesirable from the management point of view, given that each deputy head already oversees a wide spectrum of duties and a large number of staff comprising up to 23 professional teams, while managing works of different portfolio and 59 housing development projects, not to mention the additional housing projects to be taken forward in 2018-19 and beyond. The capacity of DH(P&L) and DH(P&EM) have been over-stretched and they have no spare capacity to provide adequate and timely steer to all on-going and upcoming public housing development projects.

10. In view of the above, we propose setting up a new Housing Branch under CEO and creating a permanent GE (D2) post, designated as Deputy Head of Civil Engineering Office (Housing) (DH(H)), to oversee development projects under the long-term public housing supply and lead the new branch composing of HP1U, HP2D and a new Housing Projects 3 Division (HP3D) (as described in paragraph 12 below). DH(H) will not only direct and manage the planning and execution of all consultancy studies, and the design and construction of the projects in a co-ordinated manner, but also liaise with the senior management of the b/ds concerned and other stakeholders to collect/consolidate public opinions and steer the resolution of different strategic issues in order to ensure the quality and timely delivery of public housing development projects. Based on experience from current on-going public housing projects, we find that close involvement of a directorate rank officer is essential in order to have quick decision in many interfacing issues during the construction stage. Moreover, DH(H) will also represent the department to participate in high-level steering meetings on housing developments and review the department's capability in undertaking more housing projects having regard to internal resources and market situations. DH(H) will also devise appropriate contract arrangements that are conducive to project delivery in a timely and professional manner. Having regard to the scope and complexity of the duties and the importance of the work involved, we consider it necessary and appropriate for the DH(H) post to be pitched at GE (D2) level to ensure that the incumbent has the required professional knowledge, political acumen, leadership capability and administrative experience to provide high-level steer and professional guidance to the proposed new branch.

11. The proposed organisation chart of CEO of CEDD is shown at Encls. 2 & 3 Enclosure 2. The job description of the proposed DH(H) post is at Enclosure 3.

Need for One Permanent CE (D1) Post in CEDD

12. At present, HP1U and HP2D, comprising five and six professional teams respectively, are responsible for carrying out technical studies, site formation and infrastructure works required by relevant public housing developments. HP1U

/and

and HP2D are already being overloaded by all the existing on-going public housing development projects, although most of these projects are still at the stage of feasibility or technical study. As these on-going projects proceed, we anticipate that more staff resources will be required to oversee and carry out work at the subsequent design and construction stages. Therefore, we propose to establish a new HP3D comprising at least five professional teams to share the workload of HP1U and HP2D and take forward the delivery of the New Sites in a timely manner.

13. In order to support the proposed DH(H) post and operation of the new HP3D, a dedicated permanent CE (D1) post will be required to direct its professional teams in technical studies, investigation, design and construction of the existing public housing development projects and the New Sites. The CE has to participate actively in resolving complicated technical issues, and discuss with the relevant b/ds on interfacing issues. Moreover, the CE will also be responsible for the necessary consultation with district councils, rural committees and other community groups so as to solicit support and build consensus for the public housing projects. The CE will also be involved in work necessary to secure approval of statutory processes as well as funding applications.

14. We propose to create a new permanent CE (D1) post, designated as CE/Housing Projects 3 (CE/HP3) in CEO to head the proposed HP3D. Given the complexity of the work and the substantial engineering knowledge, political acumen required of the incumbent to effectively carry out the above duties, we consider it appropriate to pitch the CE/HP3 post at CE (D1) level. The job description of the proposed CE/HP3 post is at Enclosure 4.

Encl. 4

Non-directorate Manpower Support

15. Apart from the proposed creation of the permanent GE and CE posts, CEDD will also enhance the non-directorate staffing in the proposed Housing Branch of CEO for conducting technical studies and implementation of site formation and infrastructure works supporting public housing developments at existing sites and the New Sites, by creating 28 permanent non-directorate posts² in 2018-19. These non-directorate posts would provide support on engineering,

/landscape

² The 28 permanent non-directorate posts include four Senior Engineer posts, one Senior Geotechnical Engineer post, one Senior Landscape Architect post, eight Engineer/Assistant Engineer posts, one Geotechnical Engineer/Assistant Geotechnical Engineer post, one Landscape Architect/Assistant Landscape Architect post, one Principal Technical Officer post, one Senior Technical Officer post, three Technical Officer/Technical Officer Trainee posts, one Senior Clerical Officer post, one Clerical Officer post, three Assistant Clerical Officer posts and two Clerical Assistant posts.

landscape, technical and clerical fronts, and help implement the public housing development projects according to the schedule. Details of these non-directorate posts and their major duties and responsibilities are shown at Enclosure 5.

Encl. 5

ALTERNATIVES CONSIDERED

16. CEDD has critically reviewed the existing staff resources situation with due regard to the resources required for those on-going projects, new initiatives and meeting the on-going housing supply target. The review shows that there are no spare staff resources at directorate level in CEDD to cope with the increasing workload of on-going public housing development projects and additional workload arising from the New Sites as the department has already been fully engaged with a large number of on-going and new development projects, including Liantang/Heung Yuen Wai Boundary Crossing Point; Development at Anderson Road; West Kowloon Cultural District Government Infrastructure Project; Kai Tak Development; Wan Chai Development II and the associated works for Central-Wan Chai Bypass; Tseung Kwan O - Lam Tin Tunnel; Cross Bay Link in Tseung Kwan O; Trunk Road T2; new development areas at Kwu Tung North, Fanling North, Kam Tin South, Yuen Long South and Hung Shui Kiu; development of Lok Ma Chau Loop; Tung Chung New Town Extension; topside development at the Hong Kong boundary crossing facilities island of the Hong Kong-Zhuhai-Macao Bridge; reclamations outside Victoria Harbour; and Lantau development and conservation, etc. The workload of other relevant GEs and CEs in CEDD is listed out at Enclosure 6.

Encl. 6

FINANCIAL IMPLICATIONS

17. The proposed creation of two permanent posts of a GE and a CE in CEDD will bring about an additional notional annual salary cost at mid-point of \$3,859,800 as shown below –

	Notional annual salary cost at mid-point (\$)	No. of posts
Permanent posts		
GE (D2)	2,094,600	1
CE (D1)	1,765,200	1
Total	3,859,800	2

The additional full annual average staff cost, including salaries and staff on-cost, is about \$5,557,000.

/18.

18. 28 non-directorate civil service posts will be created in CEDD to meet the existing and new workload demand. The additional notional annual salary cost at mid-point is \$20,175,510 and the full annual average staff cost including salaries and staff on-cost is about \$31,409,000.

19. CEDD has included the necessary provision in the 2018-19 Estimates to meet the cost of this proposal and will reflect the resources required in the Estimates of subsequent years.

PUBLIC CONSULTATION

20. On 9 January 2018, we consulted the Legislative Council Panel on Housing on the proposed creation of a permanent GE post and a permanent CE post in CEDD. Members supported submission of the proposal to the Establishment Subcommittee.

ESTABLISHMENT CHANGES

21. The establishment changes in CEDD for the past two years are as follows –

Establishment (Note)	Number of Posts			
	Existing (as at 1 June 2018)	As at 1 April 2018	As at 1 April 2017	As at 1 April 2016
A	52+ (11) [#]	52 + (11)	51 + (7)	51 + (6)
B	652	647	631	618
C	1 172	1 172	1 161	1 151
Total	1 876 + (11)	1 871 + (11)	1 843 + (7)	1 820 + (6)

Note:

A - ranks in the directorate pay scale or equivalent

B - non-directorate ranks, the maximum pay point of which is above MPS point 33 or equivalent

C - non-directorate ranks, the maximum pay point of which is at or below MPS point 33 or equivalent

() - number of supernumerary directorate posts

- As at 1 June 2018, there was no unfilled directorate post in CEDD

CIVIL SERVICE BUREAU COMMENTS

22. The Civil Service Bureau supports the proposed creation of two permanent posts of a GE and a CE in CEDD to cope with the additional workload arising from the public housing developments. The grading and ranking of the proposed posts are considered appropriate having regard to the level and scope of responsibilities involved and professional inputs required.

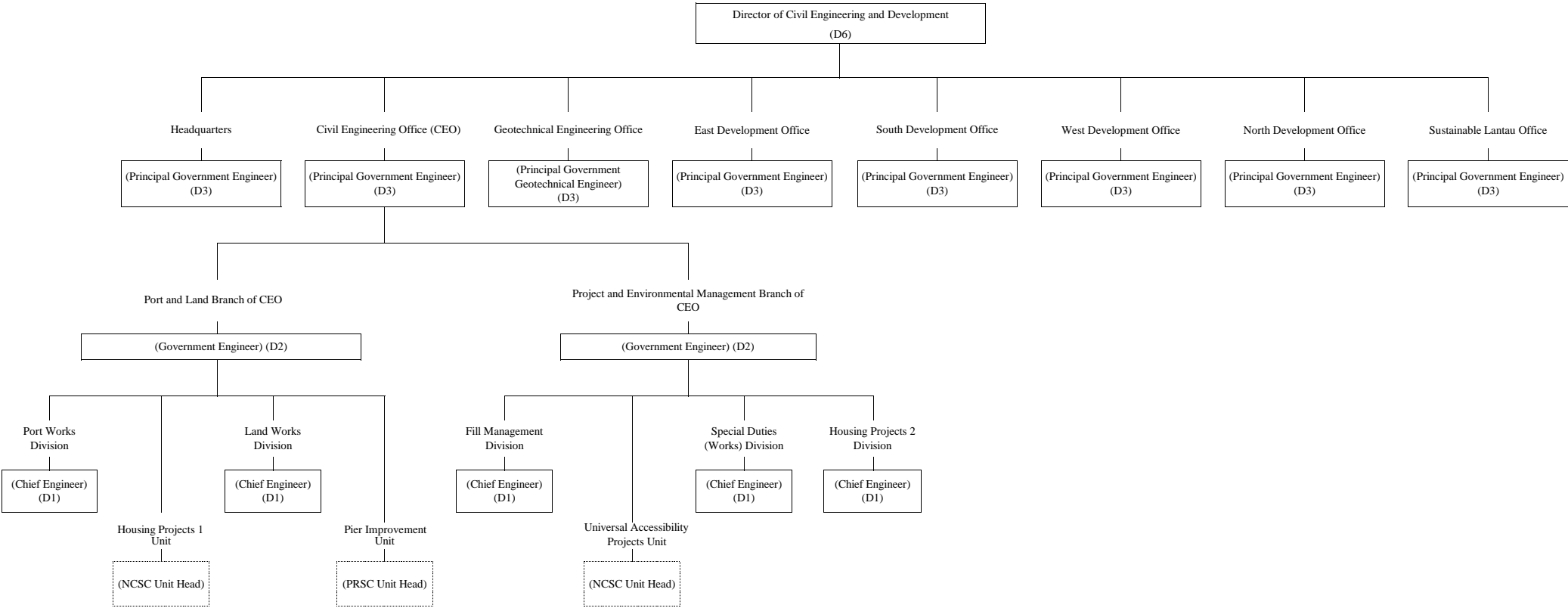
/ADVICE

**ADVICE OF THE STANDING COMMITTEE ON DIRECTORATE
SALARIES AND CONDITIONS OF SERVICE**

23. The Standing Committee on Directorate Salaries and Conditions of Service has advised that the grading proposed for the two permanent directorate posts (i.e. a GE and a CE) is appropriate.

Transport and Housing Bureau
June 2018

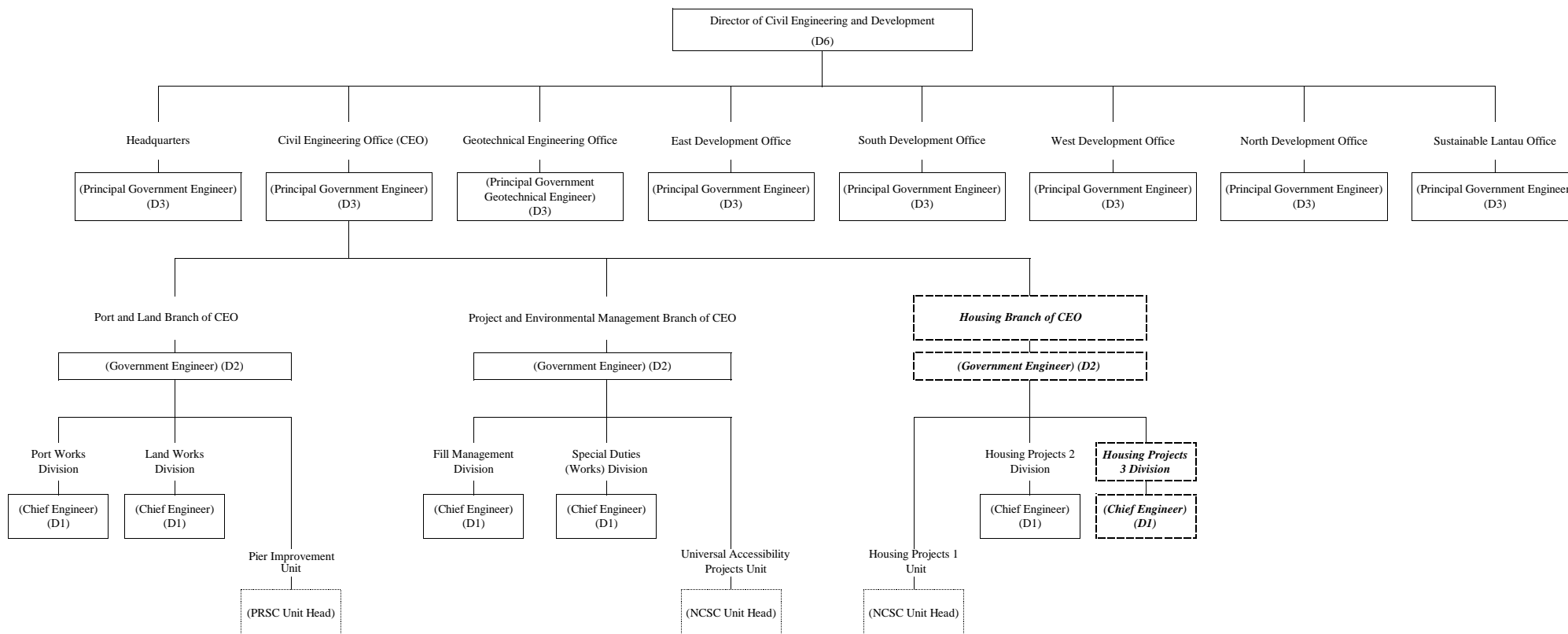
Existing Organisation Chart of Civil Engineering and Development Department



Legend:

 - Units which are headed by non-civil service contract (NCSC) staff or post-retirement service contract (PRSC) staff under the direct supervision of D2 officers.

Proposed Organisation Chart of Civil Engineering and Development Department



Legend:

- Housing Branch and Housing Projects 3 Division to be headed by the proposed permanent Government Engineer and Chief Engineer posts respectively.
- Units which are headed by non-civil service contract (NCSC) staff or post-retirement service contract (PRSC) staff under the direct supervision of D2 officers.

**Proposed Job Description
Deputy Head of Civil Engineering Office (Housing)**

Rank : Government Engineer (D2)

Responsible to : Head (Civil Engineering Office)

Major Duties and Responsibilities –

1. To assist Head (Civil Engineering Office) in overseeing and directing the work of relevant housing projects with particular emphasis on maintaining project momentum in accordance with baseline programmes.
2. To execute the strategies and policies formulated by the policy bureaux in respect of the public housing development projects.
3. To supervise project cost control, including resources allocation, project estimates and expenditure control.
4. To oversee all housing projects related technical studies, site formation and infrastructure works.
5. To lead and supervise consultation with district councils, local organisations and rural committees, etc.
6. To carry out the statutory and administrative procedures for securing project delivery and funding.
7. To manage all staff matters, including planning, office organisation, allocation of resources, establishment, personnel, training and career development.
8. To supervise the selection, appointment and management of consultants and contractors.

**Proposed Job Description
Chief Engineer/Housing Projects 3**

Rank : Chief Engineer (D1)

Responsible to : Deputy Head of Civil Engineering Office (Housing)

Major Duties and Responsibilities –

1. To lead and supervise a works division assigned under him/her.
2. To execute the strategies and policies formulated by the policy bureaux in respect of the public housing development projects.
3. To oversee the administration of technical studies, planning, design and construction supervision (including assuming the role of project manager under contracts adopting New Engineering Contract form) for the proposed housing development projects.
4. To implement effective control (including quality and budgetary control) for the projects undertaken by the Division.
5. To oversee the implementation of statutory and administrative procedures such as Environmental Impact Assessment Ordinance procedures, public consultation, gazettals under the relevant Ordinances, seeking of funding, commissioning of consultancies, tendering of works contracts and contract administration.
6. To drive for timely achievement of milestone targets, co-ordinate and oversee timely resolution of interfacing matters with other projects and developments.
7. To plan and conduct consultation with a view to soliciting public support to project implementation, including District Councils, rural committees, etc.
8. To supervise the selection and appointment of consultants and contractors.
9. To manage consultants engaged in the projects including overseeing progress of studies and works, provision of guidance to consultants, assessment and reporting of consultants' recommendations and resolution of important issues.

**Details of Non-Directorate Posts to be Created in the
Civil Engineering and Development Department for
Public Housing Development Projects**

Grades	Major duties and responsibilities
<ul style="list-style-type: none"> • Engineer 	<ul style="list-style-type: none"> • To carry out engineering duties such as – <ul style="list-style-type: none"> - implementing statutory and administrative procedures including the Environmental Impact Assessment Ordinance procedures, gazettals under the relevant Ordinances, public consultation, seeking of funding, financial control and forecast, commissioning of consultancies and tendering of works contracts; and - contract administration and consultant management.
<ul style="list-style-type: none"> • Geotechnical Engineer 	<ul style="list-style-type: none"> • To provide geotechnical engineering support during the planning, design and implementation stages of projects in relation to housing projects.
<ul style="list-style-type: none"> • Landscape Architect 	<ul style="list-style-type: none"> • To provide landscape advisory service to facilitate the delivery of works including tree preservations and landscape proposals to meet statutory requirements; and • To assist engineer in monitoring the implementation of tree preservation and landscape proposals.
<ul style="list-style-type: none"> • Technical Officer 	<ul style="list-style-type: none"> • To provide technical support in preparation of plans, drawings, display and presentation materials.

/Grades

Grades	Major duties and responsibilities
<ul style="list-style-type: none">• Clerical Officer	<ul style="list-style-type: none">• To provide clerical support with regard to the distribution and filing of incoming and outgoing correspondence, checking of invoices and payment certificates and handling of personnel, office accommodation and supplies matters.

**Key portfolios of the other existing
Government Engineer and Chief Engineer posts in the
Civil Engineering and Development Department**

All the other existing Government Engineer and Chief Engineer posts in Civil Engineering and Development Department (CEDD) are fully engaged in their respective duties. It is operationally not possible for them to take up the additional tasks without adversely affecting the discharge of their current duties.

Civil Engineering Office

2. **Deputy Head (Port & Land)** is responsible for the overall administration and management of the Port and Land Branch of the Civil Engineering Office, comprising the Port Works Division, Land Works Division and Pier Improvement Unit.

3. **Deputy Head (Project & Environmental Management)** is responsible for the overall administration and management of the Project and Environmental Management Branch of the Civil Engineering Office, comprising the Fill Management Division, Special Duties (Works) Division and Universal Accessibility Projects Unit.

4. **Chief Engineer/Special Duties (Works)** is responsible for the planning, design and construction of the Anderson Road Development, decontamination works for a site at Kennedy Town, and site formation and infrastructure works for housing sites at Shek Pai Street, Hiu Ming Street, Pok Fu Lam, Yan Wing Street, Lin Cheung Road and Fung Tak Road; and provision of technical support to Steering Committee on Implementation of Hong Kong Disneyland and Ocean Park Redevelopment Committee on further expansion of the theme parks; and co-ordination of maintenance issues in Penny's Bay Development Area.

5. **Chief Engineer/Port Works** is responsible for implementing the near-shore reclamations at Lung Kwu Tan and Ma Liu Shui; planning and engineering studies for the near-shore reclamations at the seafront of Sai Kung Sewage Treatment Works; technical studies for climate change; development of a bathing beach at Lung Mei; maintenance of public marine facilities including piers, ferry terminals, Kai Tak Cruise Terminal, cross harbour tunnels, seawalls, breakwaters, typhoon shelters and fairways; and providing advisory services for marine works.

6. **Chief Engineer/Land Works** is responsible for the planning, design and construction of the site formation and infrastructure works for public housing developments in Tuen Mun Area 54; the site formation for development of the columbarium and crematorium facilities in Sandy Ridge and Wo Hop Shek; the footbridge widening and bus layby extension in the vicinity of MTR Fanling Station; and the New Territories (NT) Greening Master Plans covering nine NT Districts and the Islands District. He/She also oversees the administration and management of CEDD Landscape Term Contract.

7. **Chief Engineer/Fill Management** is responsible for the strategic planning and management of construction and demolition materials, marine disposal for contaminated and uncontaminated sediments; design and operation of public fill reception facilities including two barging points and two fill banks, mud pits for contaminated sediments and construction waste sorting facilities; and liaison with the Mainland authorities for the cross-boundary disposal of inert construction and demolition materials and dredged sediments. He/She is also responsible for the overall management of the Dredging Works at Kwai Tsing Container Basin and its Approaching Channel; and controlling the issuance of sand permits and providing secretarial support to the Public Fill and Marine Fill Committees.

8. **Chief Engineer/Housing Projects 2** ^{Note} is responsible for conducting and implementing a number of studies and infrastructure projects under tight programme to support housing developments at Hong Po Road, San Hing Road, Tin Wah Road, Long Bin, Tan Kwai Tsuen South Fresh Water Service Reservoir, Wang Chau and Tuen Mun Central. He/She is also responsible for leading his team to consult District Councils and local organisations/committees so as to foster close communications with stakeholders and ensure timely delivery of relevant infrastructure projects.

North Development Office

9. **Deputy Project Manager (North)** is responsible for the effective implementation and co-ordination of planning, design, construction and interfacing issues relating to development projects mainly in the North, Sha Tin and Tai Po Districts. He/She is responsible for taking forward all projects relating to the Kwu Tung North and Fanling North development, as well as implementation of the Liantang/Heung Yuen Wai Boundary Control Point and associated works projects.

/10.

^{Note} Chief Engineer/Housing Projects 2 will be transferred to the proposed Housing Branch under the supervision of Deputy Head of Civil Engineer Office (Housing) upon the creation of Deputy Head of Civil Engineer Office (Housing) and Chief Engineer/Housing Projects 3.

10. **Chief Engineer/North 1** is responsible for the overall administration and construction supervision of the Liantang/Heung Yuen Wai Boundary Control Point and associated works projects, including the connecting roads, road tunnels, viaducts, cross boundary bridges and other associated works. He/She is also responsible for the works-related district administration matters of the North District.

11. **Chief Engineer/North 2** is responsible for the overall administration, feasibility and engineering studies, planning, design and construction supervision of the development projects in New Territories North and Sha Tin Districts, including the Kong Nga Po development, Agricultural Park, widening of Tai Po Road (Sha Tin Section) and Trunk Road T4 projects. He/She is responsible for the works-related district administration matters of the Sha Tin District.

12. **Chief Engineer/North 3** is responsible for the overall administration, feasibility and engineering studies, planning, design and construction supervision of works packages serving the proposed New Development Areas at Kwu Tung North and Fanling North in North East New Territories, as well as the development projects in Tai Po District. He/She is also responsible for the works-related district administration matters of the Tai Po District.

East Development Office

13. **Deputy Project Manager (East)** is responsible for the effective implementation and co-ordination of planning, design, construction and interfacing issues relating to development projects mainly in the Sai Kung District and east Kowloon.

14. **Head (Kai Tak Office)** is responsible for the effective implementation and co-ordination of planning, design, construction and interfacing issues relating to the Kai Tak Development (KTD).

15. **Chief Engineer/East 1** is responsible for the overall administration, planning, design and construction supervision of works packages, with major focus on the infrastructure works for the Sai Kung area and Tseung Kwan O (TKO) New

/Town

Town, including the TKO-Lam Tin Tunnel, Cross Bay Link, infrastructure works in TKO Town Centre South, Sai Kung Town improvement works. He/She is also responsible for the works-related district administration matters of the Sai Kung District.

16. **Chief Engineer/East 2** is responsible for the overall administration, planning, design and construction supervision of works packages, with major focus on the development of the Anderson Road Quarry site, the new housing development at TKO and the development of TKO Area 137. He/She is also responsible for the works-related district administration matters of the Kwun Tong District.

17. **Chief Engineer/East 3** is responsible for the overall administration, planning, design and construction supervision of works packages in KTD with major focus on the infrastructure at ex-runway, studies on public creatives, cycle track network and review of development intensity at KTD, further improvement works on water quality in addition to co-ordination of major interfacing projects, government buildings and open space in KTD.

18. **Chief Engineer/East 4** is responsible for the overall administration, planning, design and construction supervision of works packages in KTD with major focus on the infrastructure at former north apron and Environmentally Friendly Linkage System, in addition to co-ordination of interfaces with Shatin-to-Central Link. He/She is also responsible for the works-related district administration matters of the Kowloon City District.

19. **Chief Engineer/East 5** is responsible for the overall administration, design and construction supervision of works packages in KTD with major focus on the infrastructure at former north and south apron including Trunk Road T2, and the reconstruction and upgrading of Kai Tak Nullah. He/She is also responsible for the works-related district administration matters of the Wong Tai Sin District.

South Development Office

20. **Deputy Project Manager (South)** is responsible for the effective implementation and co-ordination of planning, design, construction and interfacing issues relating to development projects mainly in Hong Kong Island and west Kowloon, and liaison on projects in Hong Kong Island, Sham Shui Po and Yau Tsim Mong Districts.

21. **Chief Engineer/South 1** is responsible for the overall administration, planning, design and construction supervision of works packages in Kowloon, with major focus on the infrastructure and site formation works for two housing sites at Tai Wo Ping and for ex-Cha Kwo Ling Kaolin Mine Site development, pedestrian linkage projects for Kwun Tong Town Centre redevelopment, and three footbridges at Sham Mong Road. He/She is also responsible for the works-related district administration matters of the Sham Shui Po District.

22. **Chief Engineer/South 2** is responsible for the overall administration, planning and implementation of works packages in west Kowloon, with major focus on design and construction of integrated basement and government infrastructure works for the West Kowloon Cultural District, in addition to co-ordination of major interfacing projects. He/She is also responsible for the works-related district administration matters of the Yau Tsim Mong District.

23. **Chief Engineer/South 3** is responsible for the overall administration, planning, design and construction supervision of works packages on Hong Kong Island, with major focus on the Central Reclamation Phase III, Wan Chai Development Phase II (WDII) Contract C3, construction of additional floors at Central Piers Nos. 4, 5 and 6, reassembly of Queen's Pier, housing sites at Braemar Hill, boardwalk under the Island Eastern Corridor. He/She is also responsible for the works-related district administration matters of the Central & Western and Eastern Districts.

24. **Chief Engineer/South 4** is responsible for the overall administration, planning, design and construction supervision of works packages on Hong Kong Island, with major focus on WDII Contracts C1, C2 and C4 and the site formation at Ka Wai Man Road Phase 2. He/She is also responsible for overseeing interfacing issues among WDII, Central-Wan Chai Bypass and the Shatin to Central Link and the works-related district administration matters of the Wan Chai and Southern Districts.

West Development Office

25. **Deputy Project Manager (West)** is responsible for the effective implementation and co-ordination of planning, design, construction and interfacing issues relating to development projects mainly in the Yuen Long, Tuen Mun, Tsuen Wan and Kwai Tsing Districts, as well as the New Territories Cycle Track Network Project.

26. **Chief Engineer/West 1** is responsible for the overall administration, planning and supervision of the planning and engineering study for the housing sites at Yuen Long South and the feasibility study for the traffic improvement scheme for Kam Sheung Road, as well as the overall administration, planning, design and construction supervision of the site formation and infrastructure projects for Yuen Long South and Kam Tin South Developments. He/She is also responsible for the works-related district administration matters of the Yuen Long District (excluding the San Tin/Lok Ma Chau areas).

27. **Chief Engineer/West 2** is responsible for the overall administration, planning and supervision of the planning and engineering study for the potential development sites at Tuen Mun Areas 40 and 46 and the adjoining areas and the technical study for the potential sites for relocation of wholesale markets and for other industrial uses in North West Tsing Yi, as well as the overall administration, planning, design and construction supervision of the New Territories Cycle Track Network projects. He/She is also responsible for the works-related district administration matters of the Tsuen Wan and Kwai Tsing Districts.

28. **Chief Engineer/West 3** is responsible for the overall administration, planning and supervision of the planning and engineering study for the Hung Shui Kiu (HSK) New Development Area (NDA) and the feasibility studies for the Environmentally Friendly Transport Services in HSK NDA and adjacent areas, fostering a pedestrian and bicycle-friendly environment in HSK NDA and Yuen Long South Development, flood retention facilities and river revitalisation for HSK NDA, and urban design study for the future town centre near the proposed HSK Station and the district commercial node near the existing Tin Shui Wai Station, as well as potential development/housing sites at Lam Tei Quarry and the adjoining areas. He/She is also responsible for the works-related district administration matters of the Tuen Mun District.

29. **Chief Engineer/West 4** is responsible for the implementation of HSK NDA and the related brownfield matters, including the overall administration, planning, design and construction supervision of the Advance Works and Stage 1 Works of HSK NDA and the site formation and infrastructure projects for the industrial sites in Tuen Mun, HSK and Yuen Long areas, as well as the overall administration, planning and supervision of the feasibility studies for the multi-storey buildings for brownfield operations in HSK NDA and Yuen Long area, the multi-storey complex for container storage and cargo handling in Tsing Yi, the multi-storey heavy goods vehicle car park cum logistics building in Kwai Chung, and the study on land requirements for construction industry.

30. **Chief Engineer/West 5** is responsible for the overall administration, planning, design and construction supervision of the infrastructure and associated works under the Lok Ma Chau Loop development project. He/She is also responsible for the works-related district administration matters of the San Tin/Lok Ma Chau areas.

Sustainable Lantau Office

31. **Deputy Head (Works)** is responsible for the effective operation of the Sustainable Lantau Office (SLO) in the implementation and co-ordination of development and conservation programmes, mostly those at the design and construction stages, to promote sustainable development of Lantau. He/She oversees the resource planning, contract administration and financial control for development projects, such as the Tung Chung New Town Extension and Topside Development at Hong Kong Boundary Crossing Facilities Island of Hong Kong-Zhuhai-Macao Bridge, as well as the secretariat work for the subcommittees under the Lantau Development Advisory Committee (LanDAC).

32. **Deputy Head (Planning & Conservation)** is responsible for the effective operation of SLO in the planning and implementation of development and conservation programmes, mostly those at the planning and development stages, to promote sustainable development of Lantau. He/She oversees the resource planning, land use planning, contract administration and financial control for development projects such as the Sunny Bay reclamation, the Siu Ho Wan reclamation and East Lantau Metropolis.

33. **Chief Engineer/Lantau 1** is mainly responsible for carrying out studies, implementing the reclamation, site formation and infrastructure works for Tung Chung New Town Extension and Ma Wan Chung improvement works.

34. **Chief Engineer/Lantau 2** is mainly responsible for implementing the East Lantau Metropolis, the Sunny Bay reclamation, Siu Ho Wan reclamation and adjoining development works at Tai O, infrastructure works for public housing development at Tung Chung Area 54, and the Topside Development at Hong Kong Boundary Crossing Facilities Island of Hong Kong-Zhuhai-Macao Bridge.

35. **Chief Engineer/Lantau 3** is responsible for formulation and taking forward conservation initiatives, implementing the proposals as identified under the study on recreation and tourism development strategy, short-term local

/improvement

improvement works and quick-win projects, the mountain bike trail networks in south Lantau, overseeing strategic traffic and transport infrastructure development for sustainable development of Lantau, and providing the technical services and secretariat support to LanDAC and its subcommittees, and all public engagement events and activities.

CEDD Headquarters

36. **Assistant Director (Administration)** is responsible for the overall administration and management of the Administration Branch, comprising the Administration Division, Accounts and Supplies Division, Communications Unit and Training Unit, providing a range of administrative services for the management of CEDD as well as the professional and technical grades under the central authority of the Director of Civil Engineering and Development.

37. **Chief Engineer/Headquarters** is responsible for the overall administration and management of the Development Branch, comprising the Planning Unit, Town Planning Unit, and Engineering and Associated Consultants Selection Board Unit. He/She oversees the Department's commitment to land formation, land supply and road development; assists in formulating departmental strategies and co-ordinating inputs over planning related issues; oversees the Department's project delivery and expenditure under the Public Works Programme and Capital Works Reserve Fund (CWRF); and vets applications for funding under CWRF Block Votes, undertaking of projects, employment of consultants, entrustment of works and increase in consultancy fees.
