

財經事務及庫務局



香港添馬添美道二號  
政府總部二十四樓

FINANCIAL SERVICES AND THE  
TREASURY BUREAU

24/F, Central Government Offices,  
2 Tim Mei Avenue, Tamar  
Hong Kong

傳真號碼 Fax No. : 2147 5240  
電話號碼 Tel. No. : 2810 2232  
本函檔號 Our Ref. : TsyB W 00/645-1-15/3 (18-19)  
來函檔號 Your Ref. :

5 January 2018

Clerk to Panel on Development  
Legislative Council Secretariat  
Legislative Council Complex  
1 Legislative Council Road, Central  
Hong Kong  
(Attn: Ms Doris Lo)

Dear Ms Lo,

**Panel on Development  
Follow-up Actions to Meeting on 28 November 2017**

At the Panel on Development meeting on 28 November 2017, Members requested supplementary information in relation to the agenda item "Capital Works Reserve Fund (CWRF) Block Allocations for 2018-19". In consultation with relevant bureaux and departments, the Government's response is at **Enclosure**.

Yours sincerely,

A handwritten signature in blue ink, appearing to read "Hsia", written over a light blue horizontal line.

( Margaret Hsia )  
for Secretary for Financial Services  
and the Treasury

**Head 701 Subhead 1100CA**

**(a) in respect of the item on the resumption of land for development at Wang Chau, Yuen Long, the number of non-indigenous villagers affected by the village clearance and land resumption thereof, and among which the respective numbers of those who were properly rehoused/rendered homeless;**

A total of 138 structures were registered within the project scope of Wang Chau Phase 1 Development, involving approximately 180 households (about 400 persons). Among them, about 100 households are residing in licensed domestic structures or surveyed domestic structures covered by the Squatter Control Survey (SCS) conducted by the Housing Department (HD) in 1982; about 50 households are residing in licensed non-domestic structures or surveyed non-domestic structures covered by the SCS; and the remaining some 30 households are residing in unlicensed structures or structures not registered in the SCS.

2. Rehousing to public rental housing (PRH) or interim housing and payment of ex-gratia allowances will be arranged by the Government to all eligible affected households. As at end December 2017, the Government has met with 138 households for the purpose of vetting the rehousing eligibility and eligibility for ex-gratia allowances of these households. So far, the Government has finished vetting 12 households of which 8 households have been allocated with PRH flats, and another 4 households are awaiting flat allocation by HD. Vetting has not been completed for the other households because they have provided insufficient information or have not submitted any information. Therefore, the Government is unable to provide details at this stage on the total number of households who will not be offered rehousing or ex-gratia allowances. Eligibility vetting is expected to be completed in batches in early 2018.

3. The Lands Department (LandsD) will continue to closely liaise with the affected occupants to explain to them the clearance compensation and rehousing arrangements, and assess their eligibility. The Government will ensure that no one in the affected households will be rendered homeless as a result of the clearance operation.

**(b) In respect of the item on the formation, roads and drains in Area 54, Tuen Mun phase 2 stage 4B—construction of road L54B, the traffic impact assessment and latest forecast of the traffic flow in the area arising from the planned public and private housing developments;**

4. The traffic impact assessment (TIA) conducted by the Civil Engineering and Development Department (CEDD) for Tuen Mun Area 54 development was completed in 2013. In 2017, the Hong Kong Housing Authority (HKHA) conducted another TIA for Tuen Mun Area 54 development by updating the 2013 TIA for submission to the Town Planning Board. As revealed from HKHA's TIA, no undesirable traffic impacts would be induced. Relevant information of the HKHA's TIA including the executive summary, recommendation and conclusion is at **Annex 1**.

**(c) in respect of the items on the resumption of land and road works in relation to the establishment of an agricultural park ("the park") in Kwu Tung South (phase 1), the details including:**

**(i) the timetable of the related land resumption exercise and the areas of land involved, the respective numbers of indigenous and non-indigenous households, licensed structures and business operations that would be affected, as well as the number of objections received;**

5. The Agricultural Park (phase 1) occupies an area of about 11 hectares, of which some 8.1 hectares are privately owned. To tie in with the operation and development of the Agricultural Park, the Government will construct new roads and footpaths to connect the Tsiu Keng Road and Fan Kam Road to provide road access for the Agricultural Park.

6. Having considered the views collected during consultation and carefully examined the technical feasibility, the Government has optimised the alignment of the proposed road of the Agricultural Park (phase 1) to further reduce the impact on the existing structures, private land and existing communities.

7. Pursuant to the Roads (Works, Use and Compensation) Ordinance (Cap. 370), the Government gazetted the road works for Agricultural Park (phase 1) on 3 November 2017. The deadline of submitting objection is 2 January 2018. As at 27 December 2017, 10 objections have been received by the Government.

8. It is expected that the private land will revert to the Government in 2019 and be handed over to CEDD for the works of Agricultural Park (phase 1). The Government will deal with matters in relation to resumption of private land and clearance of government land for public purposes, including the arrangements for rehousing of and compensation to eligible owners and households in accordance

with the established mechanism.

9. Under the Government's prevailing compensation arrangements for acquisition of private land in the New Territories, statutory compensation is made to landowners pursuant to the applicable ordinance. In addition, the existing mechanism also provides an alternative to statutory compensation, i.e. an ex-gratia zonal compensation system consisting of four compensation zones (namely Zones A, B, C, and D). The amount of ex-gratia compensation payable will be calculated on the basis of the zonal rate applicable at the time and the area of the lot to be resumed under the established mechanism.

10. On 3 November 2017, a freezing survey was conducted within the project boundary of the Agricultural Park (phase 1), during which a total of 61 structures were registered. It is estimated that 3 households (12 persons) are involved. No shop, workshop or business operator is affected. As far as the phase 1 project scope is concerned, no environ of recognised village is involved.

11. LandsD will liaise closely with the affected occupants to explain the clearance compensation and rehousing arrangements and to assess their eligibility. The Government will arrange rehousing to PRH or interim housing for all eligible affected households, and grant them applicable ex-gratia allowances.

**(ii) the mode of operation of the park, and the number of farmers expected to be benefited from agricultural rehabilitation in the park; and**

12. The Agricultural Park will be managed by the Agriculture, Fisheries and Conservation Department (AFCD). AFCD will lease out farmland to farmers for commercial crop production. It will oversee the daily operation of the park, including allocation of farmland and management of leases, and rendering related technical supports and assistance services to tenants. Rental will be charged for farmland and facilities used. The above information has been included in the leaflet on the Agricultural Park (phase 1) distributed by the Government to the villagers and concerned stakeholders in October 2017. Agricultural Park (phase 1) can accommodate up to several dozens of farmers upon commissioning.

**(iii) while the relevant District Council was consulted about the details of the park development, whether and why the Administration considered it appropriate and sufficient to include the relevant funding proposals in the CWRF block allocations for scrutiny by the Legislative Council without providing any details of the park development;**

13. As there are around 10 000 items proposed to be funded under each of the block allocation subheads for the next financial year, we have not included details of individual items in the funding paper. In case Members have any enquiry in relation to a specific item in the list, the Government would endeavour to provide the



requested information for Members' reference.

14. For the Agricultural Park (phase 1), the Food and Health Bureau submitted papers [LC Paper Nos. CB(2)767/15-16(03) and CB(2)1857/16-17(01)] to the Legislative Council (LegCo) Panel on Food Safety and Environmental Hygiene in February 2016 and July 2017 respectively on an overview of the New Agriculture Policy (including the establishment of an Agricultural Park and preliminary information on park development) and its implementation progress.

15. In July and October 2017, AFCD, CEDD and LandsD briefed the North District Council on the specific works of the Agricultural Park (phase 1) [North District Council Paper Nos. 34/2017 and 48/2017]. The relevant papers submitted to the North District Council are at **Annex 2**. The departments concerned held a number of meetings between August and September 2017 with the relevant stakeholders, including the local villagers and village representatives, the landowners, the farmers, the representatives from the agricultural product marketing industries, the business operators and the concern groups, to explain the concepts of management and operation of the Agricultural Park and the matters concerning the works, and hear out their views. Members of the public generally support the establishment of the Agricultural Park.

16. According to the works schedule, the private land within the scope of the works of the Agricultural Park (phase 1) should revert to the Government in 2019. To adhere to the implementation schedule, the item has to be included in the block allocations for 2018-19 for payment of land acquisition and clearance costs.

### **Head 705 Subhead 5001BX**

**(d) details including the works locations and progress in respect of the item on landslip prevention and mitigation programme, 2012, package D, landslip prevention and mitigation works in Lantau Island;**

17. CEDD is carrying out detailed studies for six government man-made slopes and one natural hillside study area on Lantau Island for which the progress is satisfactory and will arrange the respective landslip prevention and mitigation works under the item Landslip Prevention and Mitigation Programme, 2012, Package D, Landslip Prevention and Mitigation Works. The locations of these man-made slopes and natural hillside study area are given in **Annex 3**.

**Head 705 Subhead 5101CX**

**(e) details including the scope and progress in respect of the item on the study on the technical issues related to the potential reclamation site at Ma Liu Shui;**

18. The technical study aims to examine the environmental, ecological, visual, air ventilation, traffic, drainage and sewerage concerns raised by the stakeholders related to the potential reclamation site at Ma Liu Shui. It has been largely completed.

**Head 707 Subhead 7100CX**

**(f) whether the various items related to the Hung Shui Kiu New Development Area ("NDA") were part of the existing package of works under the development proposals for the NDA, or were newly proposed items;**

19. The recently completed Hung Shui Kiu New Development Area (HSK NDA) Planning and Engineering (P&E) Study has only established the planning and development framework for the HSK NDA. Many of the proposals / initiatives recommended under the P&E Study for HSK NDA, such as environmentally friendly transport services, and flood retention facilities and river revitalization, will require further study. After establishing the relevant scope, requirements and preliminary designs through the further study etc., the proposals / initiatives will then be taken forward for detailed design and implementation under the Capital Works Programme. In brief, the various items related to the HSK NDA are new proposals to support the subsequent implementation of the NDA project, which do not form part of or overlap with any existing items.

**Others**

**(g) a consolidated list of the planned new development/housing projects of various scales in the New Territories, together with the estimated numbers of population intakes and jobs to be created in these new developments; and**

20. Please refer to **Annex 4**.

**(h) a consolidated list of the studies proposed to be funded under the CWRP block allocations, together with the relevant details including the deliverables of the studies.**

21. The on-going and proposed new studies to be funded under the CWRP block allocations are listed in **Annex 5**. As the proposed new studies have yet to be taken forward, details on the deliverables of these proposed studies are not available at this stage. As regards the on-going studies which involve over 300 items, in case Members have any enquiry in relation to any specific item, the Government would provide the requested information for Members' reference.

**Hong Kong Housing Authority**

**S. 16 Application for TM54 Sites 1&1A and 3&4(East)**

**Traffic Impact Assessment Report**

**April 2017**

10	PNSK	MCST	HTS
Issue	Prepared	Reviewed/ Checked	Approved

**AECOM Asia Company Ltd.**

This report is prepared for HKHA and is given for its sole benefit in relation to and pursuant to Agreement No. CB20130655 and may not be disclosed to, quoted to or relied upon by any person other than HKHA without prior written consent. No person (other than HKHA) into whose possession a copy of this report comes may rely on this report without our express written consent and HKHA may not rely on it for any purpose other than as described above.

## **Executive Summary**

AECOM was commissioned by the Hong Kong Housing Authority (HKHA) to conduct a Traffic Impact Assessment study for the proposed housing development in Tuen Mun Area 54 (TM54) Site 1 & 1A and Site 3 & 4 (East) with an increased plot ratio of 6 (the current plot ratio is 5).

Assessment on the operational performance of the road network in years 2028, 2030 and 2032 is conducted and the findings revealed that the critical junctions and links can adequately serve the future development with proposed improvement measures.

Currently, areas adjacent to TM54 are well served by public transport. Residents and students in TM54 can take MTR West Rail Line at Siu Hong Station and LRT service at Siu Hong, Kei Lung and Tin King Stops. Also, there are franchised bus, MTR feeder bus and GMB routes servicing in the vicinity. Assessment on the bus/GMB services was carried out and the required bus/GMB services were proposed.

The pedestrian assessment shows that the existing and planned roads will not experience any capacity problem with proposed improvement measures.

## **行政摘要**

艾奕康亞洲有限公司受香港房屋委員會（房委會）委託，就屯門第 54 區第 1 及 1A 號地盤及第 3 及 4(東)號地盤房屋發展進行交通影響評估研究，將由現時 5 倍的地積比率增加至 6 倍。

根據交通影響評估研究結果，在 2028 年，2030 年及 2032 年加入交通改善措施後，發展項目附近路口和道路均能足夠容納發展項目所產生的交通流量。

現時屯門第 54 區的相鄰地區已提供足夠的公共交通工具。屯門第 54 區的居民和學生可乘坐西鐵線至兆康站及輕鐵至兆康站，麒麟站及田景站。此外，附近有專營巴士，地鐵接駁巴士及綠色專線小巴提供服務。巴士及綠色專線小巴服務已進行評估及已提出所需的建議。

行人評估結果顯示，加入交通措施後，現有和規劃的道路不會有任何交通問題。

## 9 RECOMMENDATION AND CONCLUSION

### 9.1 Summary of Study

- 9.1.1 This TIA review has been carried out using a holistic approach to develop a land use based transportation study with due consideration on housing development program and various important aspects of the traffic and transportation facilities of Tuen Mun Area 54 (TM54) and within the area of influence.
- 9.1.2 MTR station, LRT termini and bus termini within 500m walking distance are assumed to access by walking. Beyond the reasonable walking distance the demand gradually replaced by feeder service. Based on this walking catchment criteria the future resident distribution pattern, pedestrian demands on the desire routes were developed and capacity assessed.
- 9.1.3 In general, this study adopted a holistic study approach with technically sound assumptions and pragmatic analysis as a basis for traffic and transportation facilities design. Section 9.2 below presents the study findings on the recommended traffic and transport facilities.

### 9.2 Study findings and Recommendations

#### Review of Public Transport Requirement

- 9.2.1 Currently, areas adjacent to TM54 are well served by public transport. Residents and students in TM54 can take MTR West Rail Line at Siu Hong Station and LRT service at Siu Hong, Kei Lun, and Tin King Stops. Also, there are 15 franchised bus routes and 1 MTR feeder route servicing in the vicinity.
- 9.2.2 Public Transport Demand due to TM54 developments for different transport mode is estimated. Assessment on the external bus/GMB services was carried out. In order to meet the demand due to TM54 developments, one new bus route and one GMB route were proposed. Also, 4 existing bus routes were suggested to extend to serve TM54.
- 9.2.3 Assessment on the feeder services requirement was carried out. Two new feeder bus routes between MTR Siu Hong Station and TM54 were proposed in order to serve the MTR Passengers due to TM54 developments and outside 500m walking distance from MTR Siu Hong Station.

#### Review of Site 1 & 1A Road Design

- 9.2.4 Site 1 & 1A access road will provide a minimum width of 10.3m wide for adequate turning space at the turnaround point. In addition, a roundabout will be introduced at the junction of Road L7 / Road L54D and the Site 1 & 1A access road to allow U-turn of unfamiliar motorist entered by mistake. An on-street bus terminating point of 65m in length should be provided on the eastern kerbside of Road L7 south of its junction with Road L54D. Under the road layout option with Road L7 partially truncated. If road L7 were to extend without truncation, a bus layout should also be provided on the western kerbside.

#### PTI and Bus Layby Design in Tuen Mun Area 54

- 9.2.5 A bus terminus with two double width bus bays and one single bay for GMB will be provided at road L54A next to the Sports Centre and Community Hall to serve also housing developments at Sites 1 & 1A, Site 2, Site 3 & 4 and Site 4A. Whereas for Site 2 and 4A (East) residents and students they can also be served by the hubs at MTR Siu Hong Station and at Siu Hong Court Bus Terminus. Bus lay-bys for passing routes will be provided at 300m to 400m interval and adequate pedestrian facilities will be provided to serve the pedestrian.

#### Pedestrian Facilities

- 9.2.6 MTR Siu Hong Station is one of the key focal points in the area. Connectivity to this important transport hub should be well planned to enhance accessibility by TM54 residents on the one

hand and to discourage pedestrian intrusion to Siu Hong Court on the other.

- 9.2.7 Pedestrian wayfinding planning avoid connection from Tuen Mun Area 54 to link directly to Road L54B. Road L54B serves only the future sewage pumping station. Majority of pedestrian movements are planned to use the pedestrian facilities on Road L54A and L54B. A purpose-planned shopping street / pedestrian corridor within Site 2 is proposed by the Housing Authority to encourage pedestrian to use the at grade crossing at junction of Tsing Lun Road / Siu Hong Road.
- 9.2.8 Pedestrian connection from Siu Hong Road to MTR Siu Hong Station will be upgraded to allow a direct and convenient access from Siu Hong Road to reach MTR Siu Hong Station as well as the LRT Siu Hong Stop. A future footpath alongside LRT tracks and Siu Hong Court proposed by Highways Department can facilitate passenger travel on foot to/from MTR Siu Hong Station and LR Siu Hong Station. Highways Department has already planned barrier free facility to link up with the existing bridge range between The Stairs and MTR Siu Hong Station PTI (North). To further enhance the connectivity between Siu Hong Road and MTR Siu Hong Station, this study proposes a pair of escalators linking Siu Hong Road with the podium level of MTR Siu Hong Station. The planned barrier free lift is proposed (slightly) adjusted for the new escalators.
- 9.2.9 According to the pedestrian traffic forecast analysis the northern footpath of Siu Hong Road requires removal of the on-street bus passenger queuing railing. The existing on-street bus stop will be relocated upon completion of the TM54 bus terminus at Site 4A (West).
- 9.2.10 Pedestrian crossing points have been proposed at key road junctions and pedestrian desire line to ensure safe and convenient pedestrian facilities are provided to serve the future community in TM54.

#### Kerbside / Set-down along Road L54B

- 9.2.11 Additional school pick-up/drop-off facilities are proposed to provide on the Eastern kerbside of Road L54B. In addition, since Road L54B only serves the sewage pumping station, it can also allow stacking of waiting private car for school children pick-up.

#### Cycle Track

- 9.2.12 A continuous cycle track is proposed to link up Tsing Lun Road, Tsz Tin Road, Road L54E, Road L54A and Road L54D with Tuen Mun Southern District cycle track system.

#### Road Traffic Impact Assessment

- 9.2.13 Vehicular traffic forecast were developed to represent the proposed development of plot ratio 6 and the new junction configuration. 16 assessment scenarios were undertaken for the various design years of 2028, 2030 and 2032 to tie in with the completion years of various developments in Tuen Mun Area 54 and its vicinity. The assessment results indicate that the proposed road network can adequately serve the future development with proposed improvement measures.
- 9.2.14 Local junction improvement measures are proposed for junctions of Lam Tei Interchange (J1), Tsing Lun Road/ Hong Po Road (J3), Tsing Lun Road/ Road L54B (J5) and Castle Peak Road/ Tsing Lun Road (J13).
- 9.2.15 It is also proposed to provide additional lane capacity for entry into Tuen Mun Road from Area 54 by local widening of Lam Tei Interchange Exit to Tuen Mun Road southbound (L2).

#### Pedestrian Traffic Impact Assessment

- 9.2.16 The pedestrian assessment shows that the existing and planned roads will not experience any capacity problem, if there is a footpath to be provided alongside the LRT track and Siu Hong Court. Provision of barrier free vertical lift at the existing staircase linking between Siu Hong Road

at ground level and MTR Siu Hong Station PTI (North), the accessibility to/from the MTR Siu Hong Station will be enhanced.

### **9.3 Conclusion**

- 9.3.1 This TIA review study has comprehensively studied the various traffic and transport aspects of Tuen Mun Area 54 Site 1 & 1A, Site 3 & 4 (East), Site 4A (South) and Site 5 development with plot ratio 6 including road alignment, public transport and pedestrian facilities, and public transport services to the area.
- 9.3.2 A package of road enhancement, pedestrian and public transport improvement measures have been proposed to meet the study objectives. It can be concluded that traffic and transport facilities planned for the Tuen Mun Area 54 Site 1 & 1A, Site 3 & 4 (East), Site 4A (South) and Site 5 with plot ratio 6 are adequately provided to serve the future traffic demand.



2017 年 7 月 27 日  
討論文件

北區區議會  
文件第 34/2017 號

在古洞南設立農業園第一期 —  
按《道路(工程、使用及補償)條例》(第 370 章)  
就擬建道路刊登憲報及  
按《收回土地條例》(第 124 章)收回相關私人土地

## 目的

本文件旨在向議員簡介在古洞南設立農業園第一期的基礎建設工程，並就有關擬建道路及收回土地，諮詢議會的意見。

## 背景

2. 政府在 2016 年《施政報告》中宣布落實新農業政策，以推動本地農業現代化及可持續發展。當局曾於 2015 年 2 月就有關政策諮詢北區區議會(北區區議會文件第 7/2015 號)，並獲得北區區議會支持。有關新農業政策的概要和實施進展，已分別載述於 2016 年 2 月及 2017 年 7 月提交予立法會食物安全及環境衛生事務委員會的文件(立法會 CB(2)767/15-16(03) 及 CB(2)1857/16-17(01) 號文件)。

3. 新農業政策其中的一項主要措施是設立由政府管理的農業園，以協助培育農業科技和管理現代化農場方面的知識，並促進相關的知識轉移，從而提升生產力。在農業園試用新的耕作方法進行商業生產，可以起示範作用，鼓勵其他農場發展及採用現代化的方法生產。

4. 為此，土木工程拓展署於 2016 年 2 月聘請顧問開展農業園工程可行性研究(下稱「研究」)，並就農業園的初步範圍和主要基建配套作出建議，以及進行初步技術及環境影響評估。

「研究」已於本年初完成。在「研究」的基礎上，署方亦已於本年 3 月聘請了另一顧問就設立農業園的基建配套開展詳細設計及實地勘測工作。

### **農業園第一期發展計劃**

5. 農業園的選址為新界古洞南(見附件一的位置圖)一組佔地約 80 公頃的農地，當中包括常耕及荒置農地，大部份屬私人土地，亦包括少量政府土地。古洞南為一個傳統蔬菜種植區，選址位置屬「農業」地帶，其土壤及附近的水源等配套，適合農產品種植。

6. 在本港設立農業園是新的嘗試，考慮到項目的發展規模不小，「研究」建議分期發展農業園，並首先以較小規模開展第一期，務求盡快先開放部分地方供農民使用，以及可作為先導試點，累積經驗以助推進及優化整個農業園的設計及發展。農業園第一期佔地約 11 公頃，當中約 8 公頃為農地，即整個農業園約十份之一農地面積。

### **農業園第一期工程**

7. 根據「研究」建議，農業園第一期的基礎建設工程範圍包括(見附件二)：

- (一) 在農業園第一期內興建長約 1 公里的新道路和行人路；
- (二) 農業園第一期用地的土地平整；以及
- (三) 相關的農業園設施(包括雨水排放、污水收集、食水供應、灌溉系統、基本留宿和貯物設施)。

8. 若有關收回土地過程順利和申請工程撥款獲得通過，初步預計農業園第一期工程可於 2019 年內開展。

## 交通評估

9. 為配合農業園的運作和發展，「研究」建議於園內建造新道路和行人路，以連接蕉徑路和粉錦公路，提供道路予農業園第一期使用。預計該新道路的開通，不會對蕉徑路和粉錦公路的交通造成不可接受的影響。

## 環境評估

10. 根據「研究」的評估，這項工程計劃不屬於《環境影響評估條例》(第 499 章)的指定工程項目，初步環境評估顯示擬議工程不會對環境造成不可接受的影響。顧問會在詳細設計階段，敲定適當的緩解措施和監管方案，以控制施工期間及日後運作上可能對環境造成的影響。

## 涉及土地

11. 農業園第一期佔地約 11 公頃，其中約 8.6 公頃屬私人土地。有關農業園第一期建議清理土地範圍可參考附件三。當局計劃根據《收回土地條例》(第 124 章)及其他相關條例收回有關土地，並會按有關政策及法例向土地業權人及受影響人士作出補償。

## 下一階段工作

12. 土木工程拓展署聘請的顧問現正就整個農業園的基礎建設工程進行詳細設計及實地勘測工作。為配合推行農業園第一期工程，當局計劃於今年第 3 季按《道路(工程、使用及補償)條例》(第 370 章)，就上述擬建道路刊登憲報，諮詢公眾意見。稍後地政總署會根據《收回土地條例》(第 124 章)及其他相關條例收回有關土地。

## 徵詢意見

13. 請各位議員就設立農業園第一期的基礎建設工程，及相關的下一階段工作提出意見。

## 附件

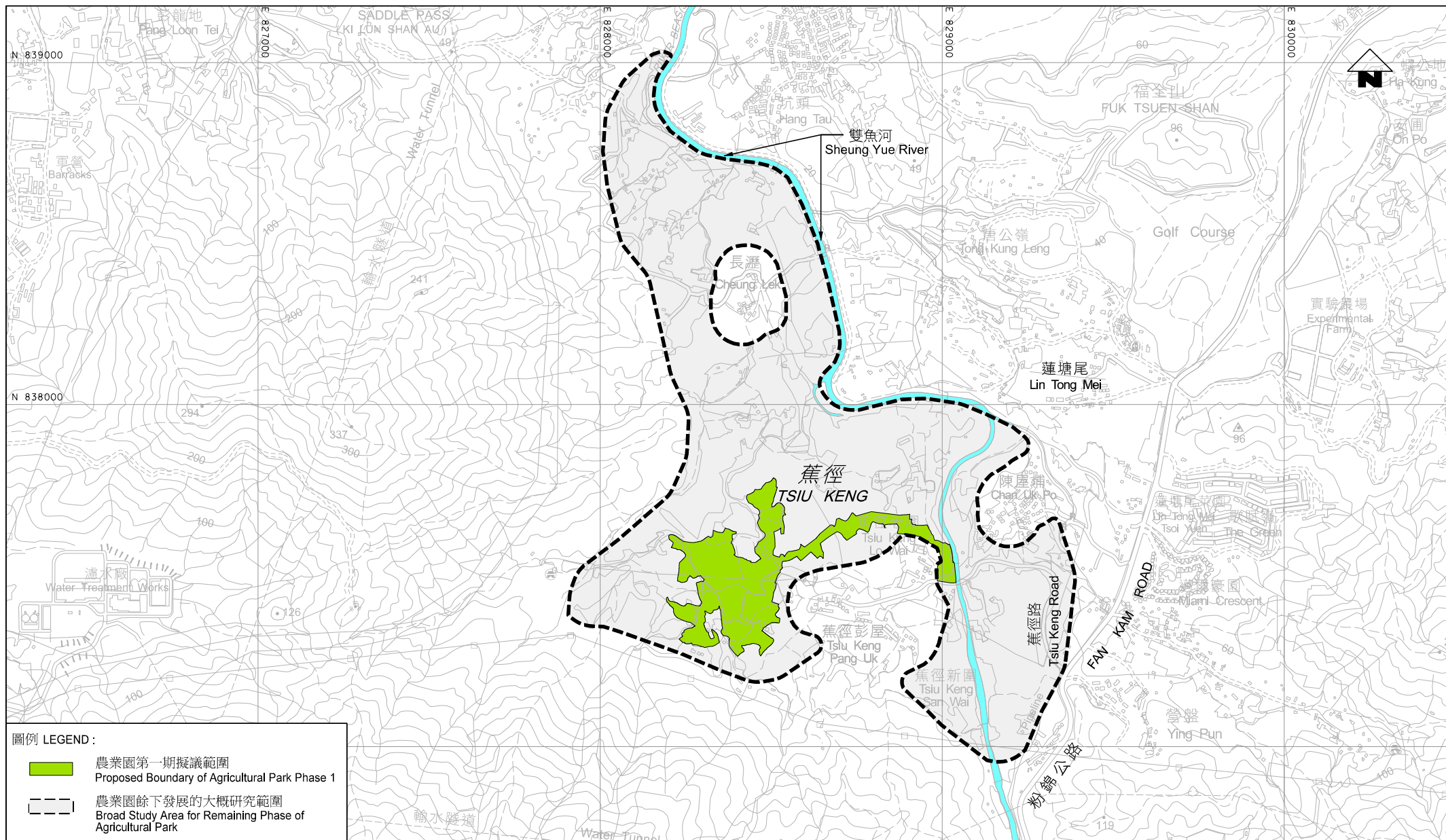
附件一：農業園位置圖

附件二：農業園第一期概念布局圖

附件三：農業園第一期建議清理土地範圍

漁農自然護理署  
土木工程拓展署  
地政總署

2017 年 7 月



圖例 LEGEND:

- 農業園第一期擬議範圍  
Proposed Boundary of Agricultural Park Phase 1
- 農業園餘下發展的大概研究範圍  
Broad Study Area for Remaining Phase of Agricultural Park

僅供參考

圖則名稱 drawing title

## 農業園位置圖

## LOCATION PLAN OF THE PROPOSED AGRICULTURAL PARK

工務計劃項目第7471RO號  
在古洞南設立農業園第一期  
PWP ITEM NO. 7471RO  
THE ESTABLISHMENT OF AN AGRICULTURAL PARK  
PHASE 1 IN KWU TUNG SOUTH

辦事處 office

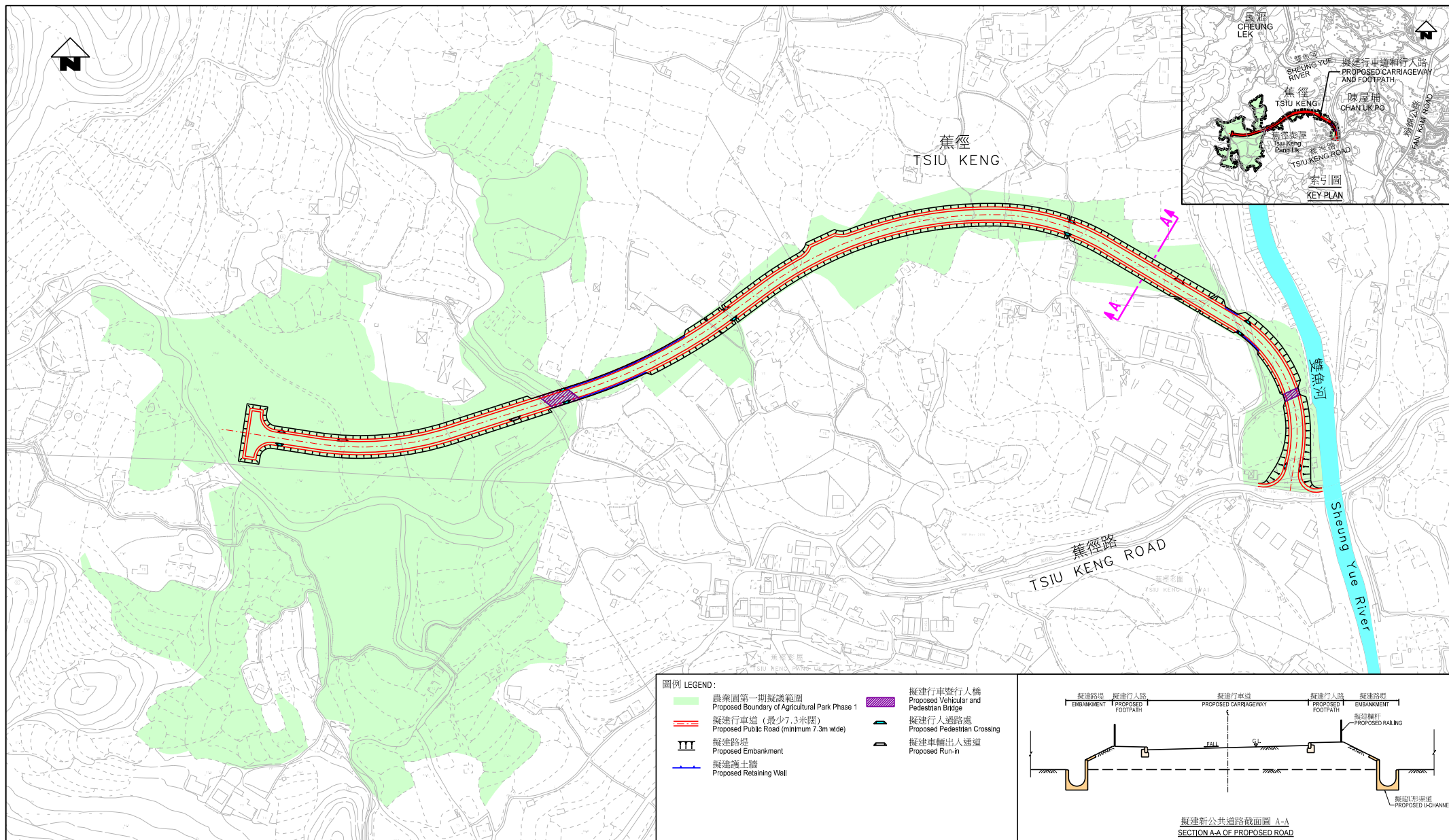
新界東拓展處  
NEW TERRITORIES EAST  
DEVELOPMENT OFFICE

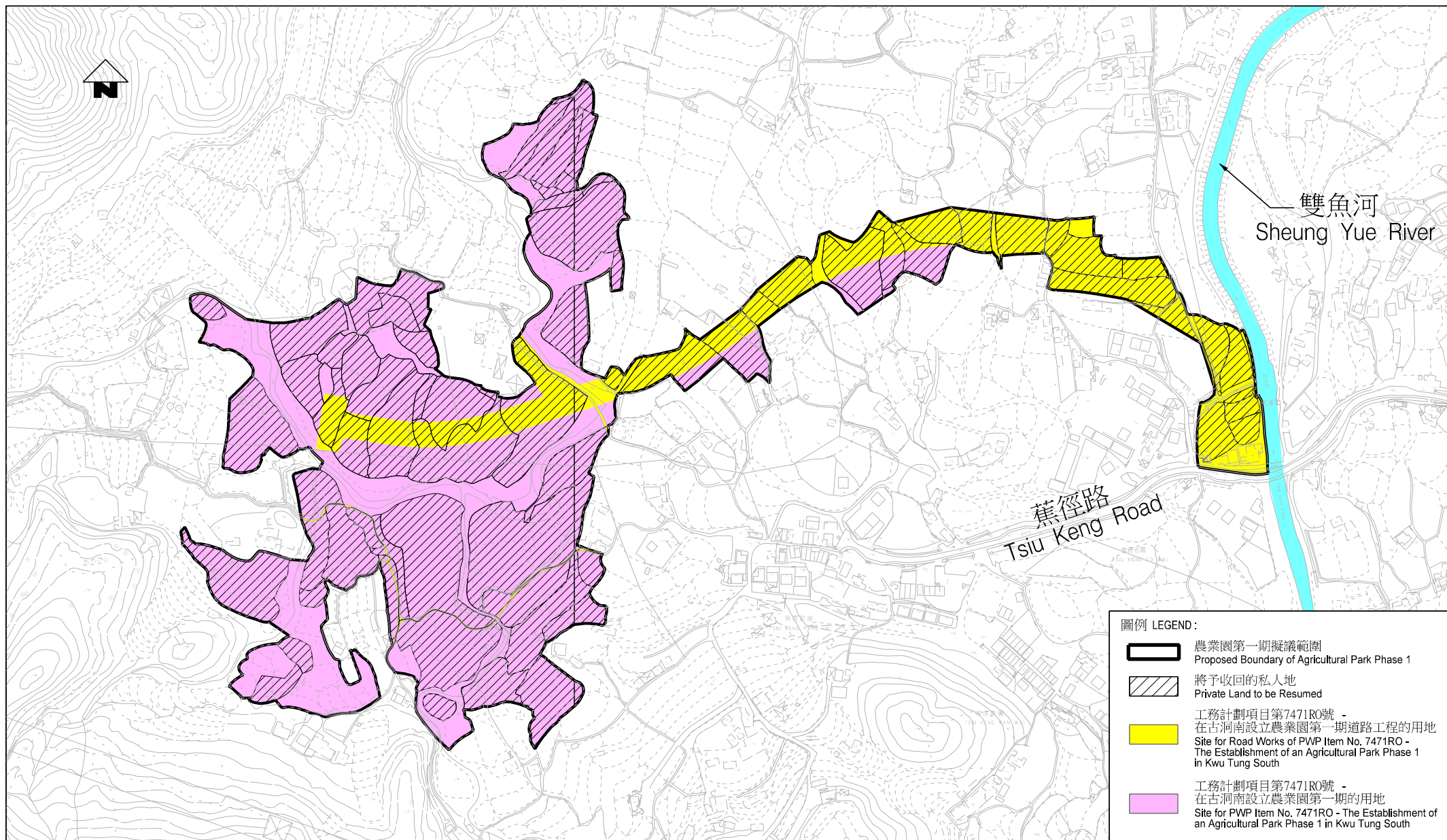
圖則編號 drawing no.  
附件 一  
APPENDIX 1

比例 scale  
1 : 15 000 ( A4 )

土木工程拓展署  
CEDD  
CIVIL ENGINEERING  
AND DEVELOPMENT  
DEPARTMENT







圖例 LEGEND:

- 農業園第一期擬議範圍  
Proposed Boundary of Agricultural Park Phase 1
- 將予收回的私人地  
Private Land to be Resumed
- 工務計劃項目第7471RO號 -  
在古洞南設立農業園第一期道路工程的用地  
Site for Road Works of PWP Item No. 7471RO -  
The Establishment of an Agricultural Park Phase 1  
in Kwu Tung South
- 工務計劃項目第7471RO號 -  
在古洞南設立農業園第一期的用地  
Site for PWP Item No. 7471RO - The Establishment of  
an Agricultural Park Phase 1 in Kwu Tung South

僅供參考

圖則名稱 drawing title

農業園第一期  
建議清理土地範圍

PROPOSED CLEARANCE PLAN  
OF AGRICULTURAL PARK PHASE 1

工務計劃項目第7471RO號  
在古洞南設立農業園第一期  
PWP ITEM NO. 7471RO  
THE ESTABLISHMENT OF AN AGRICULTURAL PARK  
PHASE 1 IN KWU TUNG SOUTH

辦事處 office

新界東拓展處  
NEW TERRITORIES EAST  
DEVELOPMENT OFFICE

圖則編號 drawing no.  
附件三  
APPENDIX 3

比例 scale  
1 : 4 000 ( A4 )

土木工程拓展署  
CEDD  
CIVIL ENGINEERING  
AND DEVELOPMENT  
DEPARTMENT

A4 210MM X 297MM

**在古洞南設立農業園第一期 —  
按《道路(工程、使用及補償)條例》(第 370 章)  
就擬建道路刊登憲報及  
按《收回土地條例》(第 124 章)收回相關私人土地**

**目的**

本文件旨在向議員匯報政府就在古洞南設立農業園第一期工程計劃諮詢相關持份者的結果，並就有關擬建道路按《道路(工程、使用及補償)條例》(第 370 章)刊登憲報及收回土地，諮詢北區區議會。

**背景**

2. 政府在 2016 年《施政報告》中宣布落實新農業政策，以推動本地農業現代化及可持續發展。我們曾於 2015 年 2 月就有關政策諮詢北區區議會(北區區議會文件第 7/2015 號)，並獲得北區區議會支持。我們亦於 2017 年 7 月 27 日向北區區議會簡介農業園第一期工程及就此聆聽議員的意見(北區區議會文件第 34/2017 號)。有關新農業政策的概要和實施進展，已分別載述於 2016 年 2 月及 2017 年 7 月提交予立法會食物安全及環境衛生事務委員會的文件(立法會 CB(2)767/15-16(03) 及 CB(2)1857/16-17(01) 號文件)。

3. 新農業政策其中的一項主要措施是設立由政府管理的農業園，以協助培育農業科技和管理現代化農場方面的知識，並促進相關的知識轉移，從而提升生產力。在農業園試用新的耕作方法進行商業生產，可以起示範作用，鼓勵其他農場發展及採用現代化的方法生產。



4. 為此，土木工程拓展署於 2016 年 2 月聘請顧問開展農業園工程可行性研究（下稱「研究」），並就農業園的初步範圍和主要基建配套作出建議，以及進行初步技術及環境影響評估。「研究」已於本年初完成。在「研究」的基礎上，署方亦已於本年 3 月聘請了另一顧問就設立農業園的基建配套開展詳細設計及實地勘測工作。

### **農業園第一期發展計劃**

5. 農業園的選址為新界古洞南(見附件一的位置圖)一組佔地約 80 公頃的農地，當中包括常耕及荒置農地，大部份屬私人土地，亦包括少量政府土地。古洞南為一個傳統蔬菜種植區，選址位置屬「農業」地帶，其土壤及附近的水源等配套，適合農產品種植。

6. 在本港設立農業園是新的嘗試，考慮到項目的發展規模不小，「研究」建議分期發展農業園，並首先以較小規模開展第一期，務求盡快先開放部分地方供農民使用，以及可作為先導試點，累積經驗以助推進及優化整個農業園的設計及發展。農業園第一期佔地約 11 公頃，當中約 8 公頃為農地，即整個農業園約十份之一農地面積。

### **農業園第一期工程**

7. 根據「研究」建議，農業園第一期的基礎建設工程範圍包括(見附件二)：

- (一) 在農業園第一期內興建長約 1 公里的新道路和行人路；
- (二) 農業園第一期用地的土地平整；以及
- (三) 相關的農業園設施(包括雨水排放、污水收集、食水供應、主要灌溉系統、基本留宿和農耕貯物設施)。

8. 若有關收回土地過程順利和申請工程撥款獲得通過，初步預計農業園第一期工程可於 2019 年內開展。

### 交通評估

9. 為配合農業園的運作和發展，「研究」建議於園內建造新道路和行人路，以連接蕉徑路和粉錦公路，提供道路予農業園第一期使用。預計該新道路的開通，不會對蕉徑路和粉錦公路的交通造成不可接受的影響。

### 環境評估

10. 根據「研究」的評估，這項工程計劃不屬於《環境影響評估條例》(第 499 章)的指定工程項目，初步環境評估顯示擬議工程不會對環境造成不可接受的影響。顧問會在詳細設計階段，敲定適當的緩解措施和監管方案，以控制施工期間及日後運作上可能對環境造成的影響。

### 涉及土地

11. 農業園第一期佔地約 11 公頃，其中約 8.6 公頃屬私人土地。有關農業園第一期建議清理土地範圍可參考**附件三**。我們計劃根據《收回土地條例》(第 124 章)及其他相關條例收回有關土地，並會按有關政策及法例向土地業權人及受影響人士作出補償。

### 諮詢工作

12. 在 2017 年 7 月 27 日就題述事宜諮詢北區區議會的會議上，有議員建議政府就工程計劃作進一步諮詢，以收集村民和相關持份者的意見。就此，相關部門已於本年 8 月及 9 月期間多次與相關持份者，包括當地村民及村代表、土地擁有人、農戶、農產品銷售業代表、商業經營者及關注團體等會面，解釋農業園計劃的具體內容及有關的工程事宜，並聽取他們的意見。諮詢工作的活動摘要可參閱**附件四**。

13. 整體而言，上述持份者普遍支持設立農業園。因應村民和相關持份者的主要關注事項包括(i)農業園範圍；(ii)農業園的運作及管理；(iii)收地補償、特惠津貼及安置安排；和(iv)現時在擬議農業園範圍內耕作的受影響農戶日後的耕作安排，我們向村民和相關持份者分發一份農業園第一期計劃的資料單張(見附件五)。

14. 考慮了諮詢期間收集所得的意見，並詳細審視技術可行性後，我們將第一期擬議行車道走線作輕微修改，以進一步減少對現有構築物、私人土地及現有社區的影響。第一期工程擬議行車道的優化走線和建議清理土地範圍可參閱附件六和附件七。

15. 我們會繼續與村民和相關持份者會面及保持溝通，並會在籌備農業園整體發展工作中充分考慮村民和相關持份者的意見。

### 下一階段工作

16. 土木工程拓展署聘請的顧問現正就整個農業園的基礎建設工程進行詳細設計及實地勘測工作。為配合推行農業園第一期工程，我們計劃於今年第 4 季按《道路(工程、使用及補償)條例》(第 370 章)，就上述擬建道路刊登憲報，諮詢公眾。地政總署會根據《收回土地條例》(第 124 章)及其他相關條例收回有關土地。

### 徵詢意見

17. 請各位議員就設立農業園第一期的基礎建設工程，及相關的下一階段工作提出意見。

## 附件

附件一：農業園位置圖

附件二：農業園第一期概念布局圖

附件三：農業園第一期建議清理土地範圍

附件四：諮詢工作活動摘要

附件五：農業園第一期計劃資料單張

附件六：農業園第一期概念布局圖(優化走線)

附件七：農業園第一期建議清理土地範圍(優化走線)

漁農自然護理署

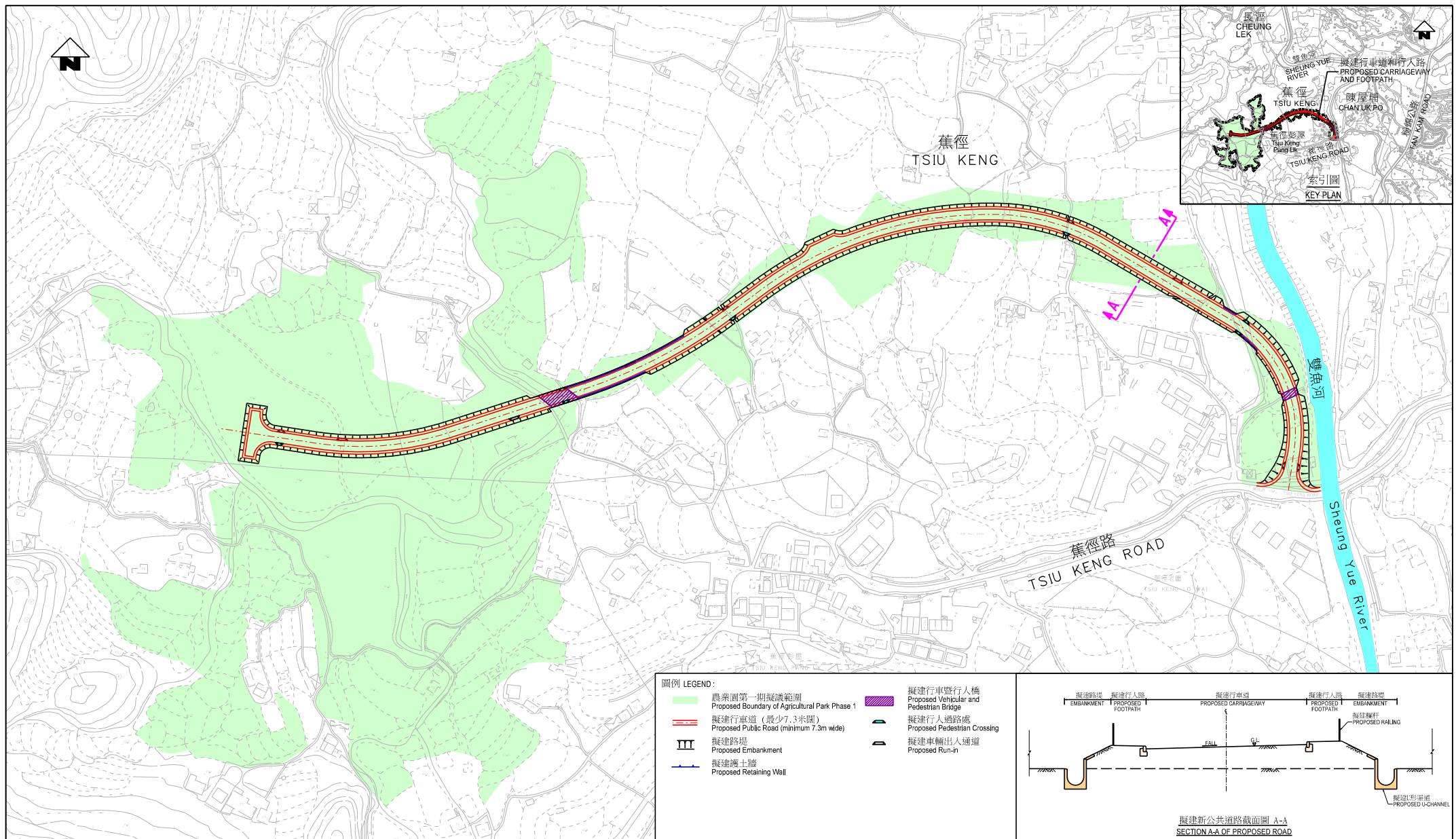
土木工程拓展署

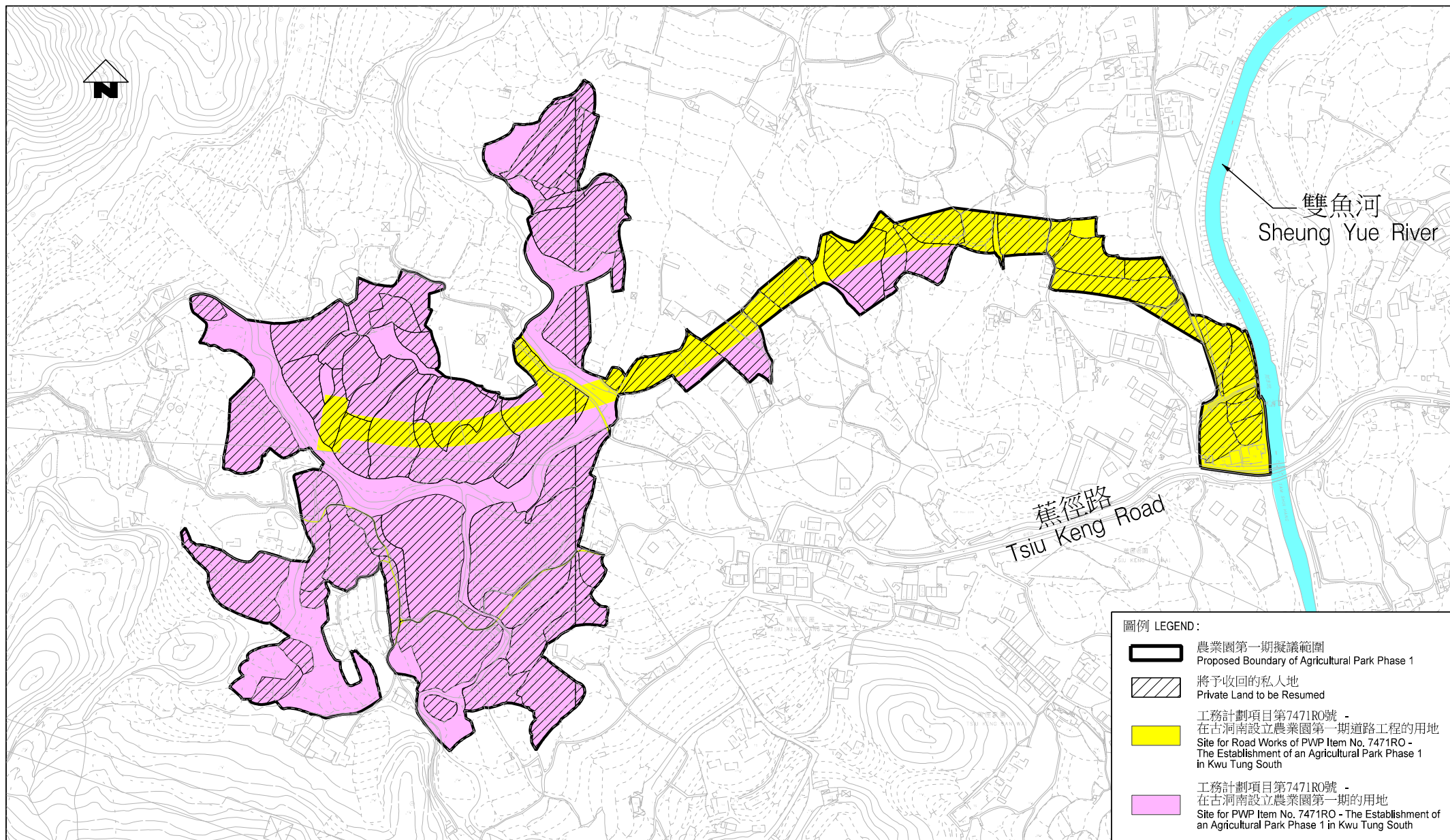
地政總署

2017 年 9 月









圖例 LEGEND:

- 農業園第一期擬議範圍  
Proposed Boundary of Agricultural Park Phase 1
- 將予收回的私人地  
Private Land to be Resumed
- 工務計劃項目第7471RO號 -  
在古洞南設立農業園第一期道路工程的用地  
Site for Road Works of PWP Item No. 7471RO -  
The Establishment of an Agricultural Park Phase 1  
in Kwu Tung South
- 工務計劃項目第7471RO號 -  
在古洞南設立農業園第一期的用地  
Site for PWP Item No. 7471RO - The Establishment of  
an Agricultural Park Phase 1 in Kwu Tung South

僅供參考

圖則名稱 drawing title

農業園第一期  
建議清理土地範圍

PROPOSED CLEARANCE PLAN  
OF AGRICULTURAL PARK PHASE 1

工務計劃項目第7471RO號  
在古洞南設立農業園第一期  
PWP ITEM NO. 7471RO  
THE ESTABLISHMENT OF AN AGRICULTURAL PARK  
PHASE 1 IN KWU TUNG SOUTH

辦事處 office

新界東拓展處  
NEW TERRITORIES EAST  
DEVELOPMENT OFFICE

圖則編號 drawing no.  
附件三  
APPENDIX 3

比例 scale  
1 : 4 000 ( A4 )

土木工程拓展署  
CEDD  
CIVIL ENGINEERING  
AND DEVELOPMENT  
DEPARTMENT

A4 210MM X 297MM

在古洞南設立農業園第一期  
諮詢工作活動摘要

(截至 2017 年 9 月 28 日)

諮詢活動紀錄

日期	諮詢活動
2017 年 7 月 13 日	上水區鄉事委員會會議
2017 年 7 月 27 日	北區區議會會議
2017 年 8 月 10 日	會見當地村民、村民代表及上水區鄉事委員會
2017 年 8 月 11 日	會見蕉徑蔬菜產銷及貸款有限責任合作社
2017 年 8 月 25 日	會見蕉徑及長瀝村村民、村民代表及陳克勤立法會議員和廖興洪區議員
2017 年 9 月 6 日	會見環保團體及農業團體 (長春社、世界自然基金會、香港觀鳥會、創建香港、綠田園基金和嘉道理農場暨植物園)
2017 年 9 月 11 日	會見蕉徑及長瀝村農戶、村民、商業經營者、侯福達區議員、上水區鄉事委員會委員和蕉徑蔬菜產銷及貸款有限責任合作社
2017 年 9 月 22 日	會見蕉徑村村民及陳克勤立法會議員
2017 年 9 月 22 日	會見蕉徑村村民、村民代表及上水區鄉事委員會
2017 年 9 月 24 日	會見蕉徑及長瀝村村民、農戶、侯福達區議員、朱凱迪立法會議員及張超雄立法會議員助理
2017 年 9 月 25 日 和 26 日	為不同區議員進行 5 場簡介會
2017 年 9 月 26 日	會見蕉徑村村民及侯福達區議員



## 村民及持份者主要意見/建議/關注和政府回應

範疇	意見/建議/關注	政府回應
(1) 公眾諮詢	<ul style="list-style-type: none"> <li>要求更廣泛諮詢當地持份者的意見</li> </ul>	<ul style="list-style-type: none"> <li>政府自 2017 年 7 月諮詢上水區鄉事委員會及北區區議會後，已多次與相關持份者，包括蕉徑及長瀝村村民、村民代表、土地擁有人、農戶、農產品銷售業代表、商業經營者及關注團體等會面，詳細解釋農業園計劃內容及有關的工程事宜，並聽取他們的意見。政府會繼續與村民和相關持份者保持溝通。</li> </ul>
(2) 農業園選址	<ul style="list-style-type: none"> <li>選址古洞南的原因</li> </ul>	<ul style="list-style-type: none"> <li>物色選址時，政府主要選擇在現行法定圖則中已規劃作農業用途，並適宜耕種或復耕的農地。有關農地的土壤和水質和基本農業基礎設施也是評估選址的考慮因素。</li> <li>根據上述準則，政府在古洞南物色到一組佔地約 75 至 80 公頃的農地，作設立農業園。而顧問完成的「工程可行性研究」亦確立在古洞南設立農業園的可行性。</li> <li>不少相關持份者(如當地村民、農戶、農業團體等)均贊同古洞南為合適選址。政府並無其他農業園計劃選址。</li> </ul>
(3) 農業園範圍	<ul style="list-style-type: none"> <li>如何釐定範圍</li> </ul>	<ul style="list-style-type: none"> <li>在釐定農業園範圍過程中，政府會以有關土地適合用於耕種或復耕用途為首要考慮，並以影響最少構築物和環境為原則，同時亦會充分考慮現有構築物的分佈情況及對現有社區環境的影響。同樣的原則亦會應用於發展農業園餘下工程。</li> </ul>

範疇	意見/建議/關注	政府回應
(4) 農業園的運作及管理	<ul style="list-style-type: none"> <li>查詢運作及管理的詳情(如入園準則、租約安排、基本留宿及農耕貯物設施等)</li> <li>查詢受影響現有農民/農戶的安置和耕作安排</li> </ul>	<ul style="list-style-type: none"> <li>農業園現時尚在籌備階段，具體運作及管理細節仍然在草擬中。初步的運作及管理原則包括： <ul style="list-style-type: none"> <li>入園準則：農地將租予有意從事種植農作物(例如蔬菜及花卉)作商業生產的農戶；設立農業園前已在該處耕作的農戶和受同期政府土地發展計劃影響而有意復耕的農戶，均可優先租用農業園第一期的農地，其餘的農地會公開招租。</li> <li>租約安排：設立農業園前已在該處耕作的農戶可優先租用農業園第一期的農地，並按有效租約原訂的條款來訂定首次租約，以五年為上限。期滿後需與其他租戶一樣簽訂為期五年的標準租約。漁護署會為農戶提供一個公平競爭的環境和制訂公平合理的租金調整機制。</li> <li>基本留宿和農耕貯物設施：有關設施會以小規模屋羣形式分布於農業園內，以方便租戶在有需要時逗留在農場附近照顧其農作物。</li> </ul> </li> </ul>
	<ul style="list-style-type: none"> <li>建議於第一期提供臨時訪客中心</li> <li>建議設立周末農墟</li> </ul>	<ul style="list-style-type: none"> <li>政府會於詳細設計階段，研究於農業園第一期提供相關臨時設施如臨時訪客中心向公眾展示有關農業園的資料，同時可供農友向消費者展銷及推廣其農產品。</li> </ul>

範疇	意見/建議/關注	政府回應
(5) 收回土地的補償及安置安排	<ul style="list-style-type: none"> <li>收回私人土地的補償安排</li> </ul>	<ul style="list-style-type: none"> <li>政府如徵收私人土地，會按有關政策及相關法例向土地業權人作出特惠或法定補償，地政總署會以當時適用的分區補償率和以擬收回地段的面積計算所涉的特惠補償金額。</li> </ul>
	<ul style="list-style-type: none"> <li>受影響農民的補償及安置安排</li> </ul>	<ul style="list-style-type: none"> <li>根據一般收回／清理土地的做法，政府會向合資格的受影響農民發放各項適用的特惠津貼，例如農作物損失的特惠津貼及有關的騷擾津貼等。</li> <li>倘若真正務農人士的住用構築物受政府工程影響而需遷移，可以選擇購買或租用其他地方的私人農地繼續耕作，合符資格的真正務農人士可向地政總署申請農業遷置。</li> </ul>
	<ul style="list-style-type: none"> <li>受影響村民的補償及安置安排</li> </ul>	<ul style="list-style-type: none"> <li>合乎資格的持牌住用臨時構築物／1982 年登記為住用寮屋佔用人，可獲房屋署安置分配租住公屋或中轉房屋。若他們因未能通過房屋署的資產及入息審查而不獲編配公屋單位，可選擇以市值租金入住中轉房屋，為期一年。另外如有關住戶（包括未能通過房屋署的資產及入息審查的住戶）在凍結登記之日期前持續居住在該所構築物達十年或以上，可不選擇入住公屋或中轉房屋而選擇申領上限為 60 萬的特惠津貼，實際金額視乎居住年數而定（受清拆影響人士如領取這項特惠津貼，在兩年內沒有資格申請任何形式的公共房屋）。若符合相關條件，受影響住戶亦可獲發放搬遷津貼，金額視乎合資格的家人數而定。</li> </ul>

範疇	意見/建議/關注	政府回應
(6) 基建工程的設計	<ul style="list-style-type: none"> <li>要求優化第一期工程擬議行車道的走線</li> </ul>	<ul style="list-style-type: none"> <li>經審視後，政府建議輕微修改第一期擬議行車道的走線，以進一步減少對現有構築物、私人土地及現有社區的影響。</li> </ul>
	<ul style="list-style-type: none"> <li>關注粉錦公路的交通</li> </ul>	<ul style="list-style-type: none"> <li>農業園工程可行性研究「研究」報告建議建造新道路，以連接蕉徑路和粉錦公路，予農業園第一期使用。</li> <li>根據初步交通評估，農業園第一期新道路的開通，只會產生有限度的交通流量，並且農業園運作模式所產生的車流高峰時段與現有粉錦公路的車流高峰時段有所不同，預計新道路的開通不會對現有蕉徑路和其他主要道路網如粉錦公路的交通構成不可接受的影響。</li> <li>鑑於農業園會提供訪客中心和設立周末農墟，在詳細設計階段進行的交通影響評估會充分考慮有關安排。除檢視訪客中心的位置和提供相關泊車設施外，政府亦會考慮實施相應的措施（包括訪客中心的運作安排、園內交通管理等），以減少對現有道路包括粉嶺公路的影響。</li> </ul>
	<ul style="list-style-type: none"> <li>關注水源供應和周邊地方的排水系統</li> </ul>	<ul style="list-style-type: none"> <li>水源供應和排水系統均是農業園基建工程設計中重要的課題。</li> <li>政府會在詳細設計階段檢視水源供應量，籍此一併考慮農業園的規劃和運作；亦會為相關排水系統進行詳細設計，包括考慮附近河道及現有排水系統。</li> </ul>

# 古洞南農業園 第一期

## 簡介



### 農業園第一期

政府計劃在新界古洞南設立由政府管理的農業園。在物色農業園的選址時，政府主要留意那些在現行法定圖則中已劃作農業用途，並適宜耕種或復耕的農地。有關農地的土壤和水質適合用於耕種，並且具備可以運用的基本農業基建設施，例如田間通道和灌溉渠道等。

計劃中的農業園佔地約75至80公頃。政府將以較小規模開展農業園第一期，務求盡快先開放部分地方供農戶使用，以及可作為先導試點，累積經驗以助優化整個農業園的設計及發展。第一期佔地約11公頃，當中約8公頃為農地，即整個農業園約十分之一面積。第一期的範圍中，常耕農



地和荒置農地的比例約為1：8。在尚未進行凍結登記前作出的初步估計，第一期範圍內涉及約60至80多個私人地段和約20至40多間構築物，需收回的私人土地（包括農耕地及用作道路工程）約8.6公頃。

### 農業園的整體構想

- 設立農業園的目的，是透過試用新的耕作方法進行商業生產，並推廣應用先進科技作農業用途，藉著促進農業科技及管理現代化農場的知識以提升生產力。
- 農業園內的農地會因應地形、農務類型的運作要求等，劃分作傳統耕種、有機耕種、花卉種植及現代化高科技耕種。
- 政府會提供相關基建配套設施，包括道路和行人路、主要灌溉系統、堆肥設施、基本留宿和農耕貯物設施。
- 政府會設置訪客中心向公眾展示有關農業園的資料，同時可供農友展銷其農產品。政府會研究於第一期提供相關臨時設施的可行性。

### 收回和清理土地的原則

在釐定農業園範圍過程中，政府會以有關土地適合用於耕種或復耕用途為首要考慮，並影響最少構築物和環境為原則，同時亦會充分考慮現有構築物的分佈情況及對現有社區環境的影響。同樣的原則亦會應用於發展農業園第二期。





## 農業園的運作及管理

農業園現時尚在籌備階段，具體管理細節仍然在草擬中。初步的管理原則包括：

- 在農業園範圍內的土地，除公共道路外將撥歸漁農自然護理署（漁護署）管理，並由漁護署將農地租予有意從事種植農作物（例如蔬菜及花卉）作商業生產的農戶。
- 符合農業園所訂條件的租戶，可獲提供基本留宿和農耕貯物設施，方便農戶在有需要時逗留在農場附近照顧其農作物。
- 現時在農業園範圍內耕作的農戶如可提供有效的租約或相關證明，可按該有效租約原訂的租金和租約期限來訂定農業園首次的租約，以五年為上限。期滿後該農戶需與其他租戶一樣簽訂農業園的標準租約。
- 農業園的標準租約期為五年。
- 在設定租金時，漁護署會為農戶提供一個公平競爭的環境，亦會適時檢討租金和制訂公平合理的租金調整機制。
- 為配合農業園的整體目標和達到合理的生產量，租戶需提交年度生產計劃，以供漁護署評估其採取的耕作模式及綜合生產力。

## 優先租用農業園第一期

設立農業園前已在該處耕作的農戶和受同期政府土地發展計劃影響而有意復耕的農戶，均可優先租用農業園第一期的農地，其餘的農地會公開招租。

## 補償、特惠津貼和安置安排(資料由地政總署提供)

相關的補償、特惠津貼和安置安排如下：

### 合資格住戶的特惠津貼及安置安排

合乎資格的持牌住用臨時構築物 / 1982年登記為住用寮屋佔用人，可獲房屋署安置分配租住公屋或中轉房屋。若他們因未能通過房屋署的資產及入息審查而不獲編配公屋單位，可選擇以市值租金入住中轉房屋，為期一年。另外如有關住戶(包括未能通過房屋署的資產及入息審查的住戶)在凍結登記之日期前持續居住在該所構築物達十年或

以上，可不選擇入住公屋或中轉房屋而選擇申領上限為60萬的特惠津貼，實際金額視乎居住年數而定(受清拆影響人士如領取這項特惠津貼，在兩年內沒有資格申請任何形式的公共房屋)。若符合相關條件，受影響住戶亦可獲發放搬遷津貼，金額視乎合資格的家庭人數而定。

### 合資格的土地業權人、合法 / 核准住宅物業佔用人、商戶和農戶的補償及特惠津貼安排

當局會向合資格的土地業權人、合法 / 核准住宅物業佔用人、商戶和農戶，按個別情況發放以下各種補償和特惠津貼：

- 一、因收回私人農地 / 屋地而發放的特惠補償；
- 二、因收回和清拆合法 / 核准住宅物業而發放的特惠津貼；
- 三、因收回合法商業物業和工業物業而發放的特惠津貼；
- 四、因收回和清拆農業經營設施而發放的特惠津貼；
- 五、因遷移新界區墳墓、金塔和神龕而發放的特惠津貼；及
- 六、因清拆寮屋區商舖、工場、貨倉、船排、學校和教堂以及觀賞魚類養殖場而發放的特惠津貼。

就農業園所收回的私人土地，政府會按有關政策及相關法例向土地業權人作出特惠或法定補償，地政總署會以當時適用的分區補償率和以擬收回地段的面積計算所涉的特惠補償金額。

有關補償、特惠津貼和安置安排的詳細資料，可向地政總署查詢。相關的單張及小冊子可於網址 <http://www.landsd.gov.hk/tc/legco/publications.htm> 下載或在以下地點索取：

#### 漁農自然護理署

地址：元朗橋樂坊2號  
元朗政府合署5樓  
漁農自然護理署  
農業推廣辦事處

傳真：3101 0344

電話：2150 7043

電郵：[agri\\_park@afcd.gov.hk](mailto:agri_park@afcd.gov.hk)

網址：<http://www.afcd.gov.hk>

#### 北區地政處

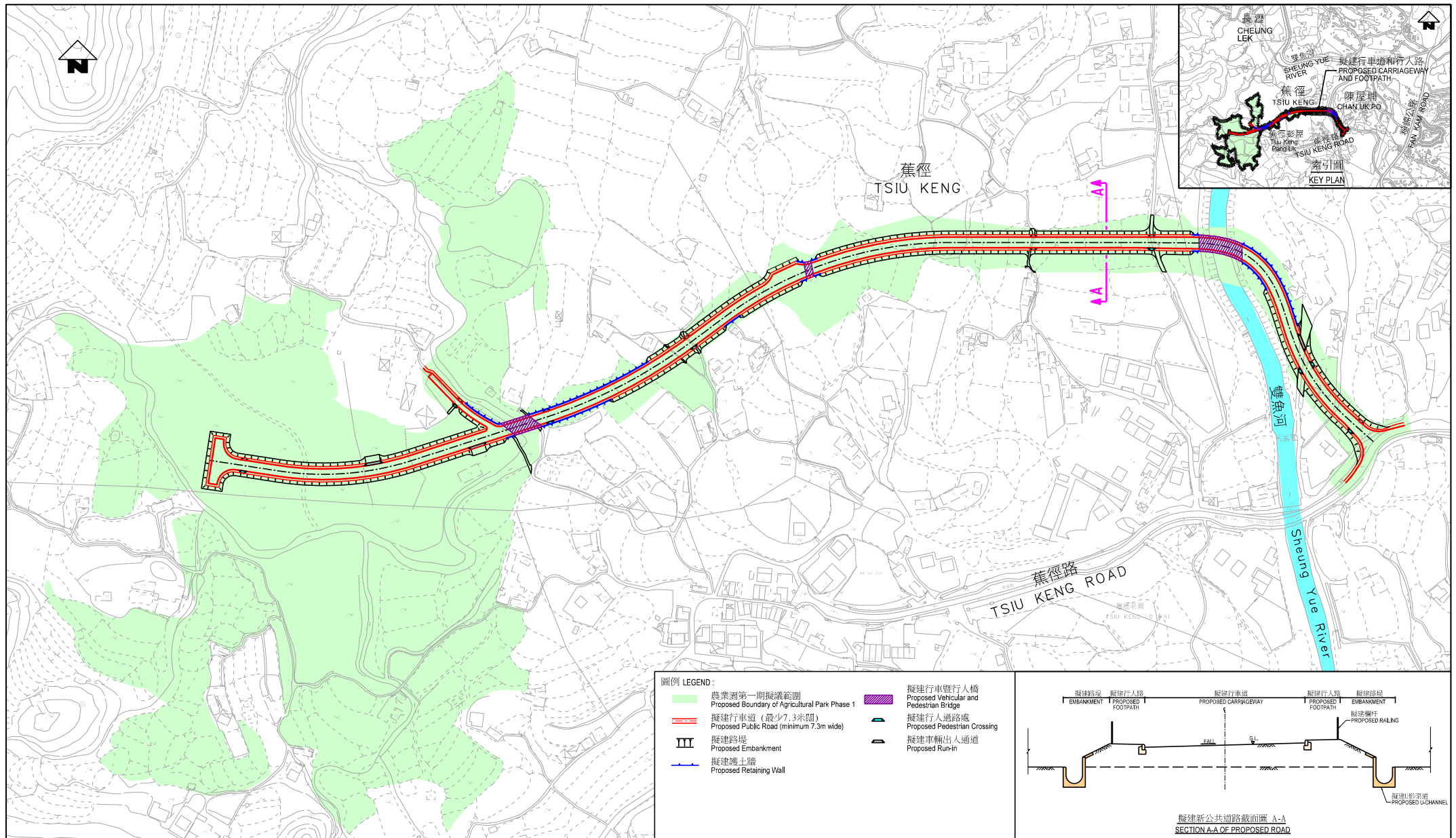
地址：新界粉嶺璧峰路3號  
北區政府合署6樓  
電話：2675 1809

#### 地政總署清拆(二)辦事處 大埔分處

地址：大埔大元邨泰榮樓  
3樓317-332室  
電話：2664 5141



漁農自然護理署  
Agriculture, Fisheries and  
Conservation Department



僅供參考

圖則名稱 drawing title

農業園第一期  
概念布局圖  
(優化走線)

CONCEPTUAL LAYOUT PLAN OF  
AGRICULTURAL PARK PHASE 1 (REFINED ALIGNMENT)

工務計劃項目第7471R0號  
在古洞南設立農業園第一期  
PWP ITEM NO. 7471R0  
THE ESTABLISHMENT OF AN AGRICULTURAL PARK  
PHASE 1 IN KWU TUNG SOUTH

圖則編號 drawing no.  
附件 六  
APPENDIX 6

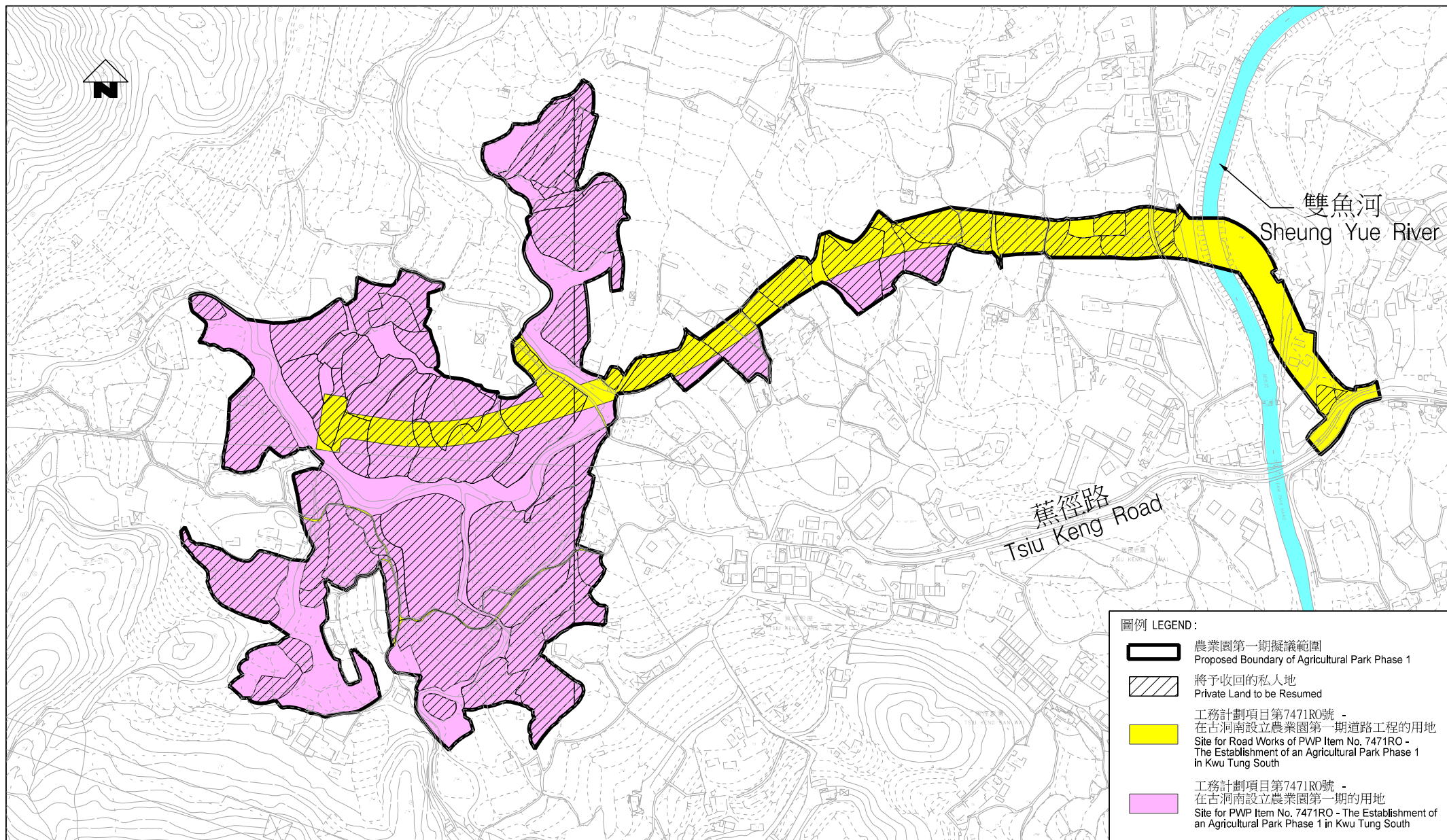
比例 scale  
1 : 3 500 ( A4 )

辦事處 office  
新界東拓展處  
NEW TERRITORIES EAST  
DEVELOPMENT OFFICE

土木工程拓展署  
CEDD  
CIVIL ENGINEERING  
AND DEVELOPMENT  
DEPARTMENT

A4 210MM X 297MM





僅供參考

圖則名稱 drawing title

農業園第一期  
建議清理土地範圍  
(優化走線)

PROPOSED CLEARANCE PLAN  
OF AGRICULTURAL PARK PHASE 1 (REFINED ALIGNMENT)

工務計劃項目第7471RO號  
在古洞南設立農業園第一期  
PWP ITEM NO. 7471RO  
THE ESTABLISHMENT OF AN AGRICULTURAL PARK  
PHASE 1 IN KWU TUNG SOUTH

圖則編號 drawing no.  
附件七  
APPENDIX 7

比例 scale  
1 : 4 000 ( A4 )

辦事處 office

新界東拓展處  
NEW TERRITORIES EAST  
DEVELOPMENT OFFICE

土木工程拓展署  
CEDD  
CIVIL ENGINEERING  
AND DEVELOPMENT  
DEPARTMENT

A4 210MM X 297MM



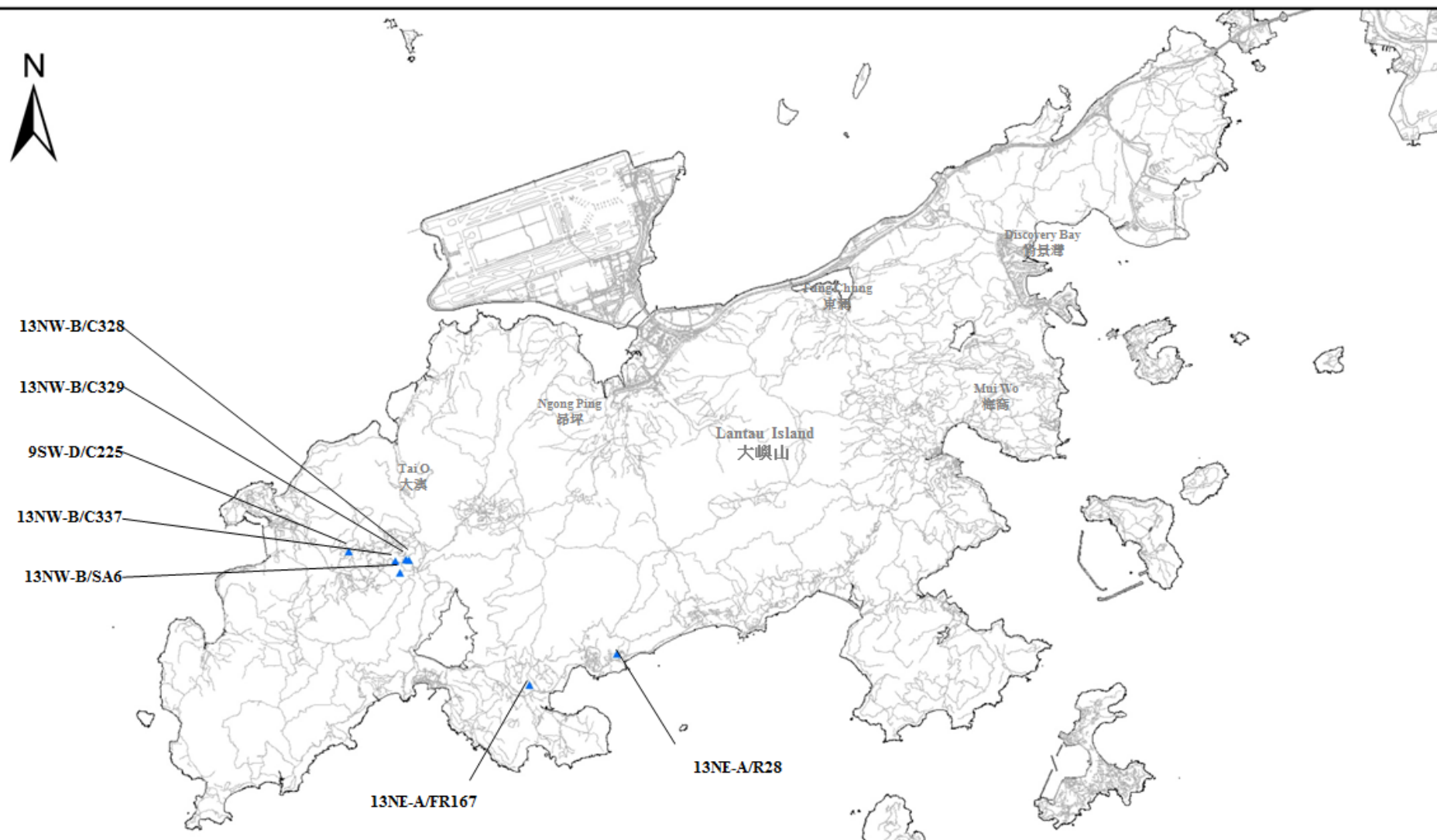
On-going Detailed Studies for Government Man-made Slopes as of 30 November 2017 (Landslip Prevention and Mitigation Works to be Arranged)

<b>Feature No.</b>	<b>Location</b>
9SW-D/C225	Ling Yan Monastery, Keung Shan, Lantau Island
13NE-A/FR167	Behind House No. 59C Shui Hau Village, Lantau Island
13NE-A/R28	Behind House No. 12A, Tong Fuk Village, Lantau Island
13NW-B/C337	Near Lam Post No. FA0517, Keung Shan Road, Lantau Island
13NW-B/C328	Near Lam Post No. FA0508, Keung Shan Road, Lantau Island
13NW-B/C329	Near Lam Post No. FA0505, Keung Shan Road, Lantau Island

On-going Detailed Study for Natural Hillside Study Area as of 30 November 2017 (Landslip Prevention and Mitigation Works to be Arranged)

<b>Study Area No.</b>	<b>Location</b>
13NW-B/SA6	Keung Shan Road near Sham Wat Road, Lantau

**Location Plan of Government Man-made Slopes and Natural Hillside Study Area under Item on Landslip Prevention and Mitigation Programme, 2012, Package D, Landslip Prevention and Mitigation Works on Lantau Island**  
 於大嶼山已納入「長遠防治山泥傾瀉計劃，2012年D組，防治山泥傾瀉工程」項目的政府人造斜坡和天然山坡的位置圖



**Legend 註釋:**

- ▲ 正進行的詳細研究 (有待安排的防治山泥傾瀉工程)
- ▲ On-going Detailed Studies (Landslip Prevention and Mitigation Works to be Arranged)

0 1,250 2,500 5,000 m 米

## **Annex 4**

### **Overview of Land Supply Initiatives in New Territories (excluding Tsuen Wan and Kwai Tsing Districts)**

#### **(I) Short to Medium Term Land Supply Initiatives\***

	<b>Estimated Additional Population</b>	<b>Estimated Employment Opportunities</b>
<b>Land Use Reviews</b> (as at end-November 2017)	Over 220 000 <sup>^</sup>	Information not available
<b>Ex-Lamma Quarry</b>	5 000	700
<b>Kam Tin South Public Housing Development</b>	25 200	Information not available
<b>Railway Property Developments – Committed Projects<sup>#</sup></b>	18 000	Subject to study

<sup>^</sup> The estimated population is based on the estimated flat production of rezoned sites under the land use review.

<sup>#</sup> Excluding West Rail Pat Heung Maintenance Centre site and potential property developments (e.g. Siu Ho Wan Depot).

#### **(II) Medium to Long Term Land Supply Initiatives\***

	<b>Estimated Additional Population</b>	<b>Estimated Employment Opportunities</b>
<b>Kwu Tung North and Fanling North New Development Areas (NDAs)</b>	172 700	37 700
<b>Tung Chung New Town Extension</b>	144 400	40 000
<b>Hung Shui Kiu NDA</b>	176 000	150 000
<b>Yuen Long South</b>	85 400	10 500

\* The estimated population and employment figures are subject to change.

	<b>Estimated Additional Population</b>	<b>Estimated Employment Opportunities</b>
<b>Tseung Kwan O Area 137</b>	Subject to study	Subject to study
<b>Potential Railway Property Developments in the Medium to Long Terms</b> (including Pat Heung Maintenance Centre and Siu Ho Wan Depot)	Over 52 000	Subject to study
<b>Topside Development at Hong Kong Boundary Crossing Facilities Island of the Hong Kong-Zhuhai Bridge</b>	Subject to study	Subject to study

**(III) Longer Term Land Supply Initiatives\***

	<b>Approximate Population Capacity</b>	<b>Approximate Employment Capacity</b>
<b>Reclamation</b>  (including Sunny Bay, Lung Kwu Tan, Siu Ho Wan, Ma Liu Shui, and East Lantau Metropolis)	East Lantau Metropolis: see Table IV below  Others : subject to study	
<b>Cavern and Underground Space Developments</b> ( <u>Cavern Development</u> : Territory-wide Cavern Master Plan delineating Strategic Cavern Areas that are geographically suitable for cavern development; Relocation of Sha Tin, Sham Tseng and Sai Kung sewage treatment works and Tsuen Wan service reservoir to caverns)  ( <u>Underground Space Development</u> : The potential of systematic use of underground space resources in a comprehensive manner in the Hong Kong context and examination of the various district problems in implementing the schemes are subject to the outcome of consultancy studies commissioned by the Civil Engineering and Development Department)	Subject to study (on the land uses of the released surface land)  Delivery of any domestic units are not anticipated	Subject to study (on the land uses of the released surface land)  Subject to study (on the usage of the underground space so created)

\* The estimated population and employment figures are subject to change.

**(IV) Strategic Growth Areas Proposed under Hong Kong 2030+\***

	<b>Approximate Population Capacity</b>	<b>Approximate Employment Capacity</b>
<b>East Lantau Metropolis</b>	~400 000 - 700 000	~200 000
<b>New Territories North</b>	~255 000 / 350 000	~215 000

\* The estimated population and employment figures are subject to change.

## On-going Study Items under 2018-19 Block Allocation

## 於2018-19年度整體撥款繼續進行的研究項目

Item 項目	Subhead 分目	Project Description	工程項目說明
1	3100GX	Conversion of the former French Mission Building for accomodation use by Law-related organization(s) and related purposes — (Project feasibility studies, minor investigations and consultants' fees)	改建前法國外方傳道會大樓供法律相關組織作辦公地方及相關用途 — (進行可行性研究、小規模勘測工作及支付顧問費)
2	3100GX	Multi-Purpose Stadium Complex (MPSC) at Kai Tak (pre-contrucion work partially upgraded to Cat A, 287RS) — (Project feasibility studies and consultants' fees)	啟德體育園 — (進行可行性研究及支付顧問費)
3	3100GX	Redevelopment of Lai Chi Kok Reception Centre — (Project feasibility studies)	荔枝角收押所重建計劃 — (進行可行性研究)
4	4100DX	Structural assessment and related study of green roof buildings – investigation	綠化天台建築物的結構評估和相關研究 – 勘查研究
5	4100DX	Study and site trial on biodiversity improvement of drainage channels through rehabilitation of habitats for water-related organisms	復修水生生物棲息地以改善河道生物多樣性的研究和實地試驗
6	4100DX	Provision and field study of constructed wetland in Ping Yuen River for removing pollutants from combined village sewage and improving ecosystem	實地研究平原河人工濕地對於減低鄉村生活污水中污染物和改善生態系統成效
7	4100DX	Field study on freshwater wetland ecosystem for improving water quality and biodiversity in Ma On Kong Secondary Channel KT13	錦田馬鞍崗次要河道 KT13 利用淡水濕地生態系統改善水質及生物多樣性實地研究
8	4100DX	Field study of hydrogel in drainage systems to suppress sulphide	在渠務系統使用氣味控制水凝膠抑制硫化物的實地研究
9	4100DX	Drainage master plan review in West Kowloon - feasibility study	西九龍雨水排放整體計劃檢討 — 可行性研究
10	4100DX	Drainage master plan review in East Kowloon - feasibility study	東九龍雨水排放整體計劃檢討 — 可行性研究
11	4100DX	Review of Drainage Master Plan in Tai Po -Feasibility Study	大埔雨水排放整體計劃檢討 — 可行性研究
12	4100DX	Review of drainage master plan in Sha Tin and Sai Kung - feasibility study	沙田及西貢雨水排放整體計劃檢討 — 可行性研究

Item 項目	Subhead 分目	Project Description	工程項目說明
13	4100DX	River flood risk study - stage 2, package 1 - feasibility study	河道水浸風險研究第2階段第1期 — 可行性研究
14	4100DX	Review of drainage improvement works for problematic rural villages in Yuen Long and North District – Feasibility Study	元朗及北區有水浸鄉村的雨水排放系統改善計劃—可行性研究
15	4100DX	River flood risk study - stage 2 package 2 - feasibility study	河道水浸風險研究第2階段第2期 — 可行性研究
16	4100DX	River Flood Risk Study, Stage 2 Package 3 - feasibility study	河道水浸風險研究第2階段第3期 — 可行性研究
17	4100DX	Corrosion study in existing rising mains, stage 2	現有加壓污水渠的腐蝕情況的第2階段研究
18	4100DX	Review of Drainage Master Plan in Northern Hong Kong Island - Feasibility Study	港島北雨水排放整體計劃檢討—可行性研究
19	4100DX	Eco-hydraulics study on green channels - Stage 2	綠化河道的生態水力學研究—第2階段
20	4100DX	Review of drainage master plan in Lantau and Outlying Islands - feasibility study	大嶼山及離島雨水排放整體計劃檢討 — 可行性研究
21	4100DX	Climate change impact study on sewerage facilities in Hong Kong - feasibility study	氣候變化對香港污水設施影響的研究 — 可行性研究
22	4100DX	Study on revitalisation of water bodies – feasibility study	活化水體的研究 – 可行性研究
23	4100DX	Review of drainage master plan in Tuen Mun, Tsuen Wan and Kwai Tsing - feasibility study	屯門、荃灣及葵青雨水排放整體計劃檢討 — 可行性研究
24	4100DX	Study on DNA-based technique for tracking of E. Coli sources in Kai Tak Approach Channel and Kwun Tong Typhoon Shelter	研究以脫氧核糖核酸技術追蹤啟德明渠進口道及觀塘避風塘的大腸桿菌來源
25	4100DX	Drainage study in Repulse Bay and Tai Tam	淺水灣及大潭雨水排放系統研究



Item 項目	Subhead 分目	Project Description	工程項目說明
26	4100DX	Optimization study of existing Tai Hang Tung stormwater storage scheme	現有大坑東蓄洪計劃優化研究
27	4100DX	Study for enhancing management of underground drain network	提升地下雨水渠道系統管理研究
28	4100DX	Study for enhancing management of underground sewer network	提升地下污水渠道系統管理研究
29	4100DX	Pilot study on sulfate reduction autotrophic de-nitrification and nitrification integrated process at Sha Tin sewage treatment works	沙田污水處理廠硫酸鹽還原自養脫硝和硝化 — 體化工藝試驗研究
30	4100DX	Enhancement studies and works for implementation of total asset management system	全面資產管理系統優化研究和推行工程
31	4100DX	Pilot study on using nitrous acid for enhancement of biogas production in Yuen Long sewage treatment works	元朗污水處理廠的亞硝酸提高生物氣體產量試驗研究
32	4100DX	Study on optimal configuration for primary sedimentation tank at Shatin Sewage Treatment Works	沙田污水處理廠初級沉澱池最佳配置研究
33	4100DX	Study on application of eco-landscape in DSD's facilities	為渠務署設施的生態景觀進行應用研究
34	4100DX	Technical study on revamping works of administration building at Stonecutters Island sewage treatment works	昂船洲污水處理廠行政大樓翻新工程技術研究
35	4100DX	Study on operating conditions in co-digestion of food waste with sewage sludge	廚餘與污泥共厭氧消化的操作環境研究
36	4100DX	Study of hydrogel on chemically enhanced primary treatment sludge	研究應用水凝膠於化學強化一級污水處理廠的污泥
37	4100DX	Study on odour control of chemically enhanced primary treatment sludge	化學強化一級處理污泥的氣味控制研究
38	4100DX	Study on biodiversity improvement in river channels through construction of aquatic firefly habitats	以建造水生螢火蟲棲息地改善河道生物多樣性研究

Item 項目	Subhead 分目	Project Description	工程項目說明
39	4100DX	Review study on desilting strategy of Shenzhen River	深圳河清淤策略覆核研究
40	4100DX	Technical Study of installation of new lifting appliances in the existing structure at Sok Kwu Wan sewage treatment works and Yung Shue Wan sewage treatment works, Lamma Island	為南丫島索罟灣及榕樹灣污水處理廠擬建新型起重裝置的技術性研究
41	5001BX	10-Year Extended Landslip Preventive Measures Project, Phase 7, Package K, Stability Studies of Private Slopes in Hong Kong Island and New Territories - Investigation	延續十年的防止山泥傾瀉計劃第七期第 K 組，香港島及新界私人斜坡之詳細研究 - 勘查研究
42	5001BX	Landslip Prevention and Mitigation Programme, 2011, Package M, Safety-screening of Private Slopes in Hong Kong Island, Western New Territories and Outlying Islands - Investigation	長遠防治山泥傾瀉計劃 2011 年 M 組，香港島及新界西私人斜坡的安全篩選 - 勘查研究
43	5001BX	Landslip Prevention and Mitigation Programme, 2011, Package N, Safety-screening of Private Slopes in Kowloon and Eastern New Territories - Investigation	長遠防治山泥傾瀉計劃 2011 年 N 組，九龍及新界東私人斜坡的安全篩選 - 勘查研究
44	5001BX	Landslip Prevention and Mitigation Programme, 2013, Package I, Safety Screening Studies of Private Slopes in Hong Kong Island, Western New Territories and Outlying Islands - Investigation	長遠防治山泥傾瀉計劃 2013 年 I 組，香港島、新界西及離島私人斜坡的安全篩選 - 勘查研究
45	5001BX	Landslip Prevention and Mitigation Programme, 2013, Package J, Safety Screening Studies of Private Slopes in Kowloon and Eastern New Territories - Investigation	長遠防治山泥傾瀉計劃 2013 年 J 組，九龍及新界東私人斜坡的安全篩選 - 勘查研究
46	5001BX	Landslip Prevention and Mitigation Programme, 2015, Package L, Safety Screening Studies of Private Slopes in Hong Kong Island, Western New Territories and Outlying Islands - Investigation	長遠防治山泥傾瀉計劃 2015 年 L 組，香港島、新界西及離島私人斜坡的安全篩選 - 勘查研究
47	5001BX	Landslip Prevention and Mitigation Programme, 2015, Package M, Safety Screening Studies of Private Slopes in Kowloon and Eastern New Territories - Investigation	長遠防治山泥傾瀉計劃 2015 年 M 組，九龍及新界東私人斜坡的安全篩選 - 勘查研究
48	5001BX	Landslip Prevention and Mitigation Programme, 2017, Package I, Safety Screening Studies of Private Slopes in Hong Kong Island, Western New Territories and Outlying Islands - Investigation	長遠防治山泥傾瀉計劃 2017 年 I 組，香港島，新界西及離島私人斜坡的安全篩選 - 勘查研究
49	5001BX	Landslip Prevention and Mitigation Programme, 2017, Package J, Safety Screening Studies of Private Slopes in Kowloon and Eastern New Territories - Investigation	長遠防治山泥傾瀉計劃 2017 年 J 組，九龍及新界東私人斜坡的安全篩選 - 勘查研究
50	5001BX	Landslip Prevention and Mitigation Programme, 2009, Package A, Landslip Preventive Works on Government Slopes and Retaining Walls, Hong Kong Island - Investigation, Design and Construction	長遠防治山泥傾瀉計劃 2009 年 A 組，香港島政府斜坡及擋土牆的防止山泥傾瀉工程 - 勘查研究、設計及建造
51	5001BX	Landslip Prevention and Mitigation Programme, 2009, Package B, Landslip Preventive Works on Government Slopes and Retaining Walls, Hong Kong Island - Investigation, Design and Construction	長遠防治山泥傾瀉計劃 2009 年 B 組，香港島政府斜坡及擋土牆的防止山泥傾瀉工程 - 勘查研究、設計及建造

Item 項目	Subhead 分目	Project Description	工程項目說明
52	5001BX	Landslip Prevention and Mitigation Programme, 2009, Package E, Landslip Preventive Works on Government Slopes and Retaining Walls, Mainland West (North) - Investigation, Design and Construction	長遠防治山泥傾瀉計劃 2009 年 E 組，九龍及新界西(北)政府斜坡及擋土牆的防止山泥傾瀉工程 - 勘查研究、設計及建造
53	5001BX	Landslip Prevention and Mitigation Programme, 2009, Package I, Landslip Preventive Works on Government Slopes and Retaining Walls, Mainland East (North) - Investigation, Design and Construction	長遠防治山泥傾瀉計劃 2009 年 I 組，九龍及新界東(北)政府斜坡及擋土牆的防止山泥傾瀉工程 - 勘查研究、設計及建造
54	5001BX	Landslip Prevention and Mitigation Programme, 2009, Package N, Landslip Preventive Works on Government Slopes and Retaining Walls, Mainland East (South) - Investigation, Design and Construction	長遠防治山泥傾瀉計劃 2009 年 N 組，九龍及新界東(南)政府斜坡及擋土牆的防止山泥傾瀉工程 - 勘查研究、設計及建造
55	5001BX	Landslip Prevention and Mitigation Programme, 2010, Package A, Landslip Prevention and Mitigation Works, Hong Kong Island West - Investigation, Design and Construction	長遠防治山泥傾瀉計劃 2010 年 A 組，港島西防治山泥傾瀉工程 - 勘查研究、設計及建造
56	5001BX	Landslip Prevention and Mitigation Programme, 2010, Package B, Landslip Prevention and Mitigation Works, Hong Kong Island East - Investigation, Design and Construction	長遠防治山泥傾瀉計劃 2010 年 B 組，港島東防治山泥傾瀉工程 - 勘查研究、設計及建造
57	5001BX	Landslip Prevention and Mitigation Programme, 2010, Package C, Landslip Prevention and Mitigation Works, Mainland West (North) - Investigation, Design and Construction	長遠防治山泥傾瀉計劃 2010 年 C 組，九龍及新界西(北)防治山泥傾瀉工程 - 勘查研究、設計及建造
58	5001BX	Landslip Prevention and Mitigation Programme, 2010, Package D, Landslip Prevention and Mitigation Works, Mainland West (South) - Investigation, Design and Construction	長遠防治山泥傾瀉計劃 2010 年 D 組，九龍及新界西(南)防治山泥傾瀉工程 - 勘查研究、設計及建造
59	5001BX	Landslip Prevention and Mitigation Programme, 2010, Package F, Landslip Prevention and Mitigation Works, Lantau - Investigation, Design and Construction	長遠防治山泥傾瀉計劃 2010 年 F 組，大嶼山防治山泥傾瀉工程 - 勘查研究、設計及建造
60	5001BX	Landslip Prevention and Mitigation Programme, 2010, Package G, Landslip Prevention and Mitigation Works, New Territories East - Investigation, Design and Construction	長遠防治山泥傾瀉計劃 2010 年 G 組，新界東防治山泥傾瀉工程 - 勘查研究、設計及建造
61	5001BX	Landslip Prevention and Mitigation Programme, 2010, Package H, Landslip Prevention and Mitigation Works, Hong Kong Island and Outlying Islands - Investigation, Design and Construction	長遠防治山泥傾瀉計劃 2010 年 H 組，香港島及離島防治山泥傾瀉工程 - 勘查研究、設計及建造
62	5001BX	Landslip Prevention and Mitigation Programme, 2010, Package I, Landslip Prevention and Mitigation Works, New Territories - Investigation, Design and Construction	長遠防治山泥傾瀉計劃 2010 年 I 組，新界防治山泥傾瀉工程 - 勘查研究、設計及建造
63	5001BX	Landslip Prevention and Mitigation Programme, 2010, Package J, Landslip Prevention and Mitigation Works, Mainland East (North) - Investigation, Design and Construction	長遠防治山泥傾瀉計劃 2010 年 J 組，九龍及新界東(北)防治山泥傾瀉工程 - 勘查研究、設計及建造
64	5001BX	Landslip Prevention and Mitigation Programme, 2010, Package K, Landslip Prevention and Mitigation Works, Mainland East (South) - Investigation, Design and Construction	長遠防治山泥傾瀉計劃 2010 年 K 組，九龍及新界東(南)防治山泥傾瀉工程 - 勘查研究、設計及建造

Item 項目	Subhead 分目	Project Description	工程項目說明
65	5001BX	Landslip Prevention and Mitigation Programme, 2011, Package A, Landslip Prevention and Mitigation Works, Hong Kong Island West - Investigation, Design and Construction	長遠防治山泥傾瀉計劃 2011 年 A 組，港島西防治山泥傾瀉工程 - 勘查研究、設計及建造
66	5001BX	Landslip Prevention and Mitigation Programme, 2011, Package B, Landslip Prevention and Mitigation Works, Hong Kong Island East - Investigation, Design and Construction	長遠防治山泥傾瀉計劃 2011 年 B 組，港島東防治山泥傾瀉工程 - 勘查研究、設計及建造
67	5001BX	Landslip Prevention and Mitigation Programme, 2011, Package C, Landslip Prevention and Mitigation Works - Investigation, Design and Construction	長遠防治山泥傾瀉計劃 2011 年 C 組，防治山泥傾瀉工程 - 勘查研究、設計及建造
68	5001BX	Landslip Prevention and Mitigation Programme, 2011, Package D, Landslip Prevention and Mitigation Works - Investigation, Design and Construction	長遠防治山泥傾瀉計劃 2011 年 D 組，防治山泥傾瀉工程 - 勘查研究、設計及建造
69	5001BX	Landslip Prevention and Mitigation Programme, 2011, Package E, Landslip Prevention and Mitigation Works, Hong Kong Island and Outlying Islands - Investigation, Design and Construction	長遠防治山泥傾瀉計劃 2011 年 E 組，香港島及離島防治山泥傾瀉工程 - 勘查研究、設計及建造
70	5001BX	Landslip Prevention and Mitigation Programme, 2011, Package F, Landslip Prevention and Mitigation Works, Kowloon and New Territories East - Investigation, Design and Construction	長遠防治山泥傾瀉計劃 2011 年 F 組，九龍及新界東防治山泥傾瀉工程 - 勘查研究、設計及建造
71	5001BX	Landslip Prevention and Mitigation Programme, 2011, Package G, Landslip Prevention and Mitigation Works - Investigation, Design and Construction	長遠防治山泥傾瀉計劃 2011 年 G 組，防治山泥傾瀉工程 - 勘查研究、設計及建造
72	5001BX	Landslip Prevention and Mitigation Programme, 2011, Package H, Landslip Prevention and Mitigation Works - Investigation, Design and Construction	長遠防治山泥傾瀉計劃 2011 年 H 組，防治山泥傾瀉工程 - 勘查研究、設計及建造
73	5001BX	Landslip Prevention and Mitigation Programme, 2011, Package I, Landslip Prevention and Mitigation Works - Investigation, Design and Construction	長遠防治山泥傾瀉計劃 2011 年 I 組，防治山泥傾瀉工程 - 勘查研究、設計及建造
74	5001BX	Landslip Prevention and Mitigation Programme, 2011, Package J, Landslip Prevention and Mitigation Works - Investigation, Design and Construction	長遠防治山泥傾瀉計劃 2011 年 J 組，防治山泥傾瀉工程 - 勘查研究、設計及建造
75	5001BX	Landslip Prevention and Mitigation Programme, 2011, Package L, Landslip Prevention and Mitigation Works, Tai Hang Road and Mount Davis Road - Investigation, Design and Construction	長遠防治山泥傾瀉計劃 2011 年 L 組，大坑道及摩星嶺道防治山泥傾瀉工程 - 勘查研究、設計及建造
76	5001BX	Landslip Prevention and Mitigation Programme, 2012, Package A, Landslip Prevention and Mitigation Works - Investigation, Design and Construction	長遠防治山泥傾瀉計劃 2012 年 A 組，防治山泥傾瀉工程 - 勘查研究、設計及建造
77	5001BX	Landslip Prevention and Mitigation Programme, 2012, Package B, Landslip Prevention and Mitigation Works - Investigation, Design and Construction	長遠防治山泥傾瀉計劃 2012 年 B 組，防治山泥傾瀉工程 - 勘查研究、設計及建造

Item 項目	Subhead 分目	Project Description	工程項目說明
78	5001BX	Landslip Prevention and Mitigation Programme, 2012, Package C, Landslip Prevention and Mitigation Works - Investigation, Design and Construction	長遠防治山泥傾瀉計劃 2012 年 C 組，防治山泥傾瀉工程 - 勘查研究、設計及建造
79	5001BX	Landslip Prevention and Mitigation Programme, 2012, Package D, Landslip Prevention and Mitigation Works - Investigation, Design and Construction	長遠防治山泥傾瀉計劃 2012 年 D 組，防治山泥傾瀉工程 - 勘查研究、設計及建造
80	5001BX	Landslip Prevention and Mitigation Programme, 2012, Package E, Landslip Prevention and Mitigation Works - Investigation, Design and Construction	長遠防治山泥傾瀉計劃 2012 年 E 組，防治山泥傾瀉工程 - 勘查研究、設計及建造
81	5001BX	Landslip Prevention and Mitigation Programme, 2012, Package F, Landslip Prevention and Mitigation Works - Investigation, Design and Construction	長遠防治山泥傾瀉計劃 2012 年 F 組，防治山泥傾瀉工程 - 勘查研究、設計及建造
82	5001BX	Landslip Prevention and Mitigation Programme, 2012, Package G, Landslip Prevention and Mitigation Works - Investigation, Design and Construction	長遠防治山泥傾瀉計劃 2012 年 G 組，防治山泥傾瀉工程 - 勘查研究、設計及建造
83	5001BX	Landslip Prevention and Mitigation Programme, 2012, Package H, Landslip Prevention and Mitigation Works - Investigation, Design and Construction	長遠防治山泥傾瀉計劃 2012 年 H 組，防治山泥傾瀉工程 - 勘查研究、設計及建造
84	5001BX	Landslip Prevention and Mitigation Programme, 2012, Package I, Landslip Prevention and Mitigation Works - Investigation, Design and Construction	長遠防治山泥傾瀉計劃 2012 年 I 組，防治山泥傾瀉工程 - 勘查研究、設計及建造
85	5001BX	Landslip Prevention and Mitigation Programme, 2012, Package J, Landslip Prevention and Mitigation Works - Investigation, Design and Construction	長遠防治山泥傾瀉計劃 2012 年 J 組，防治山泥傾瀉工程 - 勘查研究、設計及建造
86	5001BX	Landslip Prevention and Mitigation Programme, 2013, Package A, Landslip Prevention and Mitigation Works - Investigation, Design and Construction	長遠防治山泥傾瀉計劃 2013 年 A 組，防治山泥傾瀉工程 - 勘查研究、設計及建造
87	5001BX	Landslip Prevention and Mitigation Programme, 2013, Package B, Landslip Prevention and Mitigation Works - Investigation, Design and Construction	長遠防治山泥傾瀉計劃 2013 年 B 組，防治山泥傾瀉工程 - 勘查研究、設計及建造
88	5001BX	Landslip Prevention and Mitigation Programme, 2013, Package C, Landslip Prevention and Mitigation Works - Investigation, Design and Construction	長遠防治山泥傾瀉計劃 2013 年 C 組，防治山泥傾瀉工程 - 勘查研究、設計及建造
89	5001BX	Landslip Prevention and Mitigation Programme, 2013, Package D, Landslip Prevention and Mitigation Works - Investigation, Design and Construction	長遠防治山泥傾瀉計劃 2013 年 D 組，防治山泥傾瀉工程 - 勘查研究、設計及建造
90	5001BX	Landslip Prevention and Mitigation Programme, 2013, Package E, Landslip Prevention and Mitigation Works - Investigation, Design and Construction	長遠防治山泥傾瀉計劃 2013 年 E 組，防治山泥傾瀉工程 - 勘查研究、設計及建造

Item 項目	Subhead 分目	Project Description	工程項目說明
91	5001BX	Landslip Prevention and Mitigation Programme, 2013, Package F, Landslip Prevention and Mitigation Works - Investigation, Design and Construction	長遠防治山泥傾瀉計劃 2013 年 F 組，防治山泥傾瀉工程 - 勘查研究、設計及建造
92	5001BX	Landslip Prevention and Mitigation Programme, 2013, Package G, Landslip Prevention and Mitigation Works - Investigation, Design and Construction	長遠防治山泥傾瀉計劃 2013 年 G 組，防治山泥傾瀉工程 - 勘查研究、設計及建造
93	5001BX	Landslip Prevention and Mitigation Programme, 2013, Package H, Landslip Prevention and Mitigation Works - Investigation, Design and Construction	長遠防治山泥傾瀉計劃 2013 年 H 組，防治山泥傾瀉工程 - 勘查研究、設計及建造
94	5001BX	Landslip Prevention and Mitigation Programme, 2014, Package A, Landslip Prevention and Mitigation Works and Provision of Emergency Works Services for Natural Terrain Landslides Occurring in Mainland West (North) - Investigation, Design and Construction	長遠防治山泥傾瀉計劃 2014 年 A 組，防治山泥傾瀉工程及為九龍及新界西(北)天然山坡發生山泥傾瀉提供緊急維修 - 勘查研究、設計及建造
95	5001BX	Landslip Prevention and Mitigation Programme, 2014, Package B, Landslip Prevention and Mitigation Works and Provision of Emergency Works Services for Natural Terrain Landslides Occurring in Mainland West (South) - Investigation, Design and Construction	長遠防治山泥傾瀉計劃 2014 年 B 組，防治山泥傾瀉工程及為九龍及新界西(南)天然山坡發生山泥傾瀉提供緊急維修 - 勘查研究、設計及建造
96	5001BX	Landslip Prevention and Mitigation Programme, 2014, Package C, Landslip Prevention and Mitigation Works - Investigation, Design and Construction	長遠防治山泥傾瀉計劃 2014 年 C 組，防治山泥傾瀉工程 - 勘查研究、設計及建造
97	5001BX	Landslip Prevention and Mitigation Programme, 2014, Package D, Landslip Prevention and Mitigation Works - Investigation, Design and Construction	長遠防治山泥傾瀉計劃 2014 年 D 組，防治山泥傾瀉工程 - 勘查研究、設計及建造
98	5001BX	Landslip Prevention and Mitigation Programme, 2014, Package E, Landslip Prevention and Mitigation Works - Investigation, Design and Construction	長遠防治山泥傾瀉計劃 2014 年 E 組，防治山泥傾瀉工程 - 勘查研究、設計及建造
99	5001BX	Landslip Prevention and Mitigation Programme, 2014, Package F, Landslip Prevention and Mitigation Works - Investigation, Design and Construction	長遠防治山泥傾瀉計劃 2014 年 F 組，防治山泥傾瀉工程 - 勘查研究、設計及建造
100	5001BX	Landslip Prevention and Mitigation Programme, 2014, Package G, Landslip Prevention and Mitigation Works - Investigation, Design and Construction	長遠防治山泥傾瀉計劃 2014 年 G 組，防治山泥傾瀉工程 - 勘查研究、設計及建造
101	5001BX	Landslip Prevention and Mitigation Programme, 2014, Package H, Landslip Prevention and Mitigation Works - Investigation, Design and Construction	長遠防治山泥傾瀉計劃 2014 年 H 組，防治山泥傾瀉工程 - 勘查研究、設計及建造
102	5001BX	Landslip Prevention and Mitigation Programme, 2014, Package I, Landslip Prevention and Mitigation Works and Provision of Emergency Works Services for Natural Terrain Landslides Occurring in Hong Kong Island West - Investigation, Design and Construction	長遠防治山泥傾瀉計劃 2014 年 I 組，防治山泥傾瀉工程及為港島西天然山坡發生山泥傾瀉提供緊急維修 - 勘查研究、設計及建造
103	5001BX	Landslip Prevention and Mitigation Programme, 2014, Package J, Landslip Prevention and Mitigation Works and Provision of Emergency Works Services for Natural Terrain Landslides Occurring in Hong Kong Island East - Investigation, Design and Construction	長遠防治山泥傾瀉計劃 2014 年 J 組，防治山泥傾瀉工程及為港島東天然山坡發生山泥傾瀉提供緊急維修 - 勘查研究、設計及建造

Item 項目	Subhead 分目	Project Description	工程項目說明
104	5001BX	Landslip Prevention and Mitigation Programme, 2015, Package A, Landslip Prevention and Mitigation Works and Provision of Emergency Works Services for Natural Terrain Landslides Occurring in Mainland East (North) - Investigation, Design and Construction	長遠防治山泥傾瀉計劃 2015 年 A 組，防治山泥傾瀉工程及為九龍及新界東(北)天然山坡發生山泥傾瀉提供緊急維修 - 勘查研究、設計及建造
105	5001BX	Landslip Prevention and Mitigation Programme, 2015, Package B, Landslip Prevention and Mitigation Works and Provision of Emergency Works Services for Natural Terrain Landslides Occurring in Mainland East (South) - Investigation, Design and Construction	長遠防治山泥傾瀉計劃 2015 年 B 組，防治山泥傾瀉工程及為九龍及新界東(南)天然山坡發生山泥傾瀉提供緊急維修 - 勘查研究、設計及建造
106	5001BX	Landslip Prevention and Mitigation Programme, 2015, Package C, Landslip Prevention and Mitigation Works - Investigation, Design and Construction	長遠防治山泥傾瀉計劃 2015 年 C 組，防治山泥傾瀉工程 - 勘查研究、設計及建造
107	5001BX	Landslip Prevention and Mitigation Programme, 2015, Package D, Landslip Prevention and Mitigation Works - Investigation, Design and Construction	長遠防治山泥傾瀉計劃 2015 年 D 組，防治山泥傾瀉工程 - 勘查研究、設計及建造
108	5001BX	Landslip Prevention and Mitigation Programme, 2015, Package E, Landslip Prevention and Mitigation Works - Investigation, Design and Construction	長遠防治山泥傾瀉計劃 2015 年 E 組，防治山泥傾瀉工程 - 勘查研究、設計及建造
109	5001BX	Landslip Prevention and Mitigation Programme, 2015, Package F, Landslip Prevention and Mitigation Works - Investigation, Design and Construction	長遠防治山泥傾瀉計劃 2015 年 F 組，防治山泥傾瀉工程 - 勘查研究、設計及建造
110	5001BX	Landslip Prevention and Mitigation Programme, 2015, Package G, Landslip Prevention and Mitigation Works and Provision of Emergency Works Services for Natural Terrain Landslides Occurring in Mainland West (North) - Investigation, Design and Construction	長遠防治山泥傾瀉計劃 2015 年 G 組，防治山泥傾瀉工程及為九龍及新界西(北)天然山坡發生山泥傾瀉提供緊急維修 - 勘查研究、設計及建造
111	5001BX	Landslip Prevention and Mitigation Programme, 2015, Package H, Landslip Prevention and Mitigation Works and Provision of Emergency Works Services for Natural Terrain Landslides Occurring in Mainland West (South) - Investigation, Design and Construction	長遠防治山泥傾瀉計劃 2015 年 H 組，防治山泥傾瀉工程及為九龍及新界西(南)天然山坡發生山泥傾瀉提供緊急維修 - 勘查研究、設計及建造
112	5001BX	Landslip Prevention and Mitigation Programme, 2016, Package A, Landslip Prevention and Mitigation Works - Investigation, Design and Construction	長遠防治山泥傾瀉計劃 2016 年 A 組，防治山泥傾瀉工程 - 勘查研究、設計及建造
113	5001BX	Landslip Prevention and Mitigation Programme, 2016, Package B, Landslip Prevention and Mitigation Works - Investigation, Design and Construction	長遠防治山泥傾瀉計劃 2016 年 B 組，防治山泥傾瀉工程 - 勘查研究、設計及建造
114	5001BX	Landslip Prevention and Mitigation Programme, 2016, Package C, Landslip Prevention and Mitigation Works and Provision of Emergency Works Services for Natural Terrain Landslides Occurring in Hong Kong Island West - Investigation, Design and Construction	長遠防治山泥傾瀉計劃 2016 年 C 組，防治山泥傾瀉工程及為港島西天然山坡發生山泥傾瀉提供緊急維修 - 勘查研究、設計及建造
115	5001BX	Landslip Prevention and Mitigation Programme, 2016, Package D, Landslip Prevention and Mitigation Works and Provision of Emergency Works Services for Natural Terrain Landslides Occurring in Hong Kong Island East - Investigation, Design and Construction	長遠防治山泥傾瀉計劃 2016 年 D 組，防治山泥傾瀉工程及為港島東天然山坡發生山泥傾瀉提供緊急維修 - 勘查研究、設計及建造
116	5001BX	Landslip Prevention and Mitigation Programme, 2016, Package E, Landslip Prevention and Mitigation Works and Provision of Emergency Works Services for Natural Terrain Landslides Occurring in Mainland East (North) - Investigation, Design and Construction	長遠防治山泥傾瀉計劃 2016 年 E 組，防治山泥傾瀉工程及為九龍及新界東(北)天然山坡發生山泥傾瀉提供緊急維修 - 勘查研究、設計及建造



Item 項目	Subhead 分目	Project Description	工程項目說明
117	5001BX	Landslip Prevention and Mitigation Programme, 2016, Package F, Landslip Prevention and Mitigation Works and Provision of Emergency Works Services for Natural Terrain Landslides Occurring in Mainland East (South) - Investigation, Design and Construction	長遠防治山泥傾瀉計劃 2016 年 F 組，防治山泥傾瀉工程及為九龍及新界東(南)天然山坡發生山泥傾瀉提供緊急維修 - 勘查研究、設計及建造
118	5001BX	Landslip Prevention and Mitigation Programme, 2016, Package G, Landslip Prevention and Mitigation Works - Investigation, Design and Construction	長遠防治山泥傾瀉計劃 2016 年 G 組，防治山泥傾瀉工程 - 勘查研究、設計及建造
119	5001BX	Landslip Prevention and Mitigation Programme, 2016, Package H, Landslip Prevention and Mitigation Works - Investigation, Design and Construction	長遠防治山泥傾瀉計劃 2016 年 H 組，防治山泥傾瀉工程 - 勘查研究、設計及建造
120	5001BX	Study of Landslides Occurring in Hong Kong Island and Outlying Islands in 2014 and 2015 - Feasibility Study	2014年至2015年香港島及離島山泥傾瀉調查顧問合約 - 可行性研究
121	5001BX	Study of Landslide Occurring in Kowloon and the New Territories in 2014 and 2015 - Feasibility Study	2014年至2015年九龍及新界山泥傾瀉調查顧問合約 - 可行性研究
122	5001BX	Study of Landslides Occurring on Hong Kong Island and Outlying Islands between 2016 and 2018 - Feasibility Study	2016年至2018年香港島及離島山泥傾瀉調查顧問合約 - 可行性研究
123	5001BX	Study of Landslides Occurring in Kowloon and the New Territories between 2016 and 2018 - Feasibility Study	2016年至2018年九龍及新界山泥傾瀉調查顧問合約 - 可行性研究
124	5001BX	Landslip Prevention and Mitigation Works Entrusted to the Buildings Department in 2011-12	委託屋宇署於2011-12負責的防治山泥傾瀉工程
125	5001BX	Landslip Prevention and Mitigation Programme, 2008, Package A, Natural Terrain Hazard Mitigation Works, Hong Kong Island West and South - Investigation, Design and Construction	長遠防治山泥傾瀉計劃 2008 年 A 組，香港西及南天然山坡風險緩減工程 - 勘查研究、設計及建造
126	5001BX	Landslip Prevention and Mitigation Programme, 2008, Package B, Natural Terrain Hazard Mitigation Works, Hong Kong Island West and South - Investigation, Design and Construction	長遠防治山泥傾瀉計劃 2008 年 B 組，新界東及西天然山坡風險緩減工程 - 勘查研究、設計及建造
127	5001BX	Landslip Prevention and Mitigation Programme, 2008, Package I, Natural Terrain Hazard Mitigation Works, Hong Kong Island - Investigation, Design and Construction	長遠防治山泥傾瀉計劃 2008 年 I 組，香港島天然山坡風險緩減工程 - 勘查研究、設計及建造
128	5001BX	Landslip Prevention and Mitigation Programme, 2008, Package J, Natural Terrain Hazard Mitigation Works, Kowloon, New Territories and Outlying Islands - Investigation, Design and Construction	長遠防治山泥傾瀉計劃 2008 年 J 組，九龍、新界及離島天然山坡風險緩減工程 - 勘查研究、設計及建造
129	5001BX	Landslip Prevention and Mitigation Programme, 2009, Package C, Natural Terrain Hazard Mitigation Works, Lantau and Outlying Islands - Investigation, Design and Construction	長遠防治山泥傾瀉計劃 2008 年 C 組，大嶼山及離島天然山坡風險緩減工程 - 勘查研究、設計及建造

Item 項目	Subhead 分目	Project Description	工程項目說明
130	5001BX	Landslip Prevention and Mitigation Programme, 2009, Package D, Natural Terrain Hazard Mitigation Works, Hong Kong Island and Sai Kung - Investigation, Design and Construction	長遠防治山泥傾瀉計劃 2009 年 D 組，香港島及西貢天然山坡風險緩減工程 - 勘查研究、設計及建造
131	5001BX	Landslip Prevention and Mitigation Programme, 2009, Package G, Natural Terrain Hazard Mitigation Works, New Territories West - Investigation, Design and Construction	長遠防治山泥傾瀉計劃 2009 年 G 組，新界西天然山坡風險緩減工程 - 勘查研究、設計及建造
132	5001BX	Landslip Prevention and Mitigation Programme, 2009, Package H, Natural Terrain Hazard Mitigation Works, New Territories East - Investigation, Design and Construction	長遠防治山泥傾瀉計劃 2009 年 H 組，新界東天然山坡風險緩減工程 - 勘查研究、設計及建造
133	5001BX	Landslip Prevention and Mitigation Programme, 2008, Package M, Natural Terrain Hazard Mitigation Works, Lantau North, Sha Tin & Wan Chai - Investigation, Design and Construction	長遠防治山泥傾瀉計劃 2008 年 M 組，大嶼山、沙田及灣仔天然山坡風險緩減工程 - 勘查研究、設計及建造
134	5001BX	Landslip Prevention and Mitigation Programme, 2008, Package N, Natural Terrain Hazard Mitigation Works, West Lantau - Investigation, Design and Construction	長遠防治山泥傾瀉計劃 2008 年 N 組，西大嶼山天然山坡風險緩減工程 - 勘查研究、設計及建造
135	5001BX	Landslip Prevention and Mitigation Programme, 2017, Package A, Landslip Prevention and Mitigation Works and Provision of Emergency Works Services for Natural Terrain Landslides Occurring in Mainland West (North) - Investigation, Design and Construction	長遠防治山泥傾瀉計劃 2017 年 A 組，防治山泥傾瀉工程及為九龍及新界西(北)天然山坡發生山泥傾瀉提供緊急維修 - 勘查研究、設計及建造
136	5001BX	Landslip Prevention and Mitigation Programme, 2017, Package B, Landslip Prevention and Mitigation Works and Provision of Emergency Works Services for Natural Terrain Landslides Occurring in Mainland West (South) - Investigation, Design and Construction	長遠防治山泥傾瀉計劃 2017 年 B 組，防治山泥傾瀉工程及為九龍及新界西(南)天然山坡發生山泥傾瀉提供緊急維修 - 勘查研究、設計及建造
137	5001BX	Landslip Prevention and Mitigation Programme, 2017, Package C, Landslip Prevention and Mitigation Works - Investigation, Design and Construction	長遠防治山泥傾瀉計劃 2017 年 C 組，防治山泥傾瀉工程 - 勘查研究、設計及建造
138	5001BX	Landslip Prevention and Mitigation Programme, 2017, Package D, Landslip Prevention and Mitigation Works - Investigation, Design and Construction	長遠防治山泥傾瀉計劃 2017 年 D 組，防治山泥傾瀉工程 - 勘查研究、設計及建造
139	5001BX	Landslip Prevention and Mitigation Programme, 2017, Package E, Landslip Prevention and Mitigation Works - Investigation, Design and Construction	長遠防治山泥傾瀉計劃 2017 年 E 組，防治山泥傾瀉工程 - 勘查研究、設計及建造
140	5001BX	Landslip Prevention and Mitigation Programme, 2017, Package F, Landslip Prevention and Mitigation Works - Investigation, Design and Construction	長遠防治山泥傾瀉計劃 2017 年 F 組，防治山泥傾瀉工程 - 勘查研究、設計及建造
141	5001BX	Landslip Prevention and Mitigation Programme, 2017, Package G, Landslip Prevention and Mitigation Works - Investigation, Design and Construction	長遠防治山泥傾瀉計劃 2017 年 G 組，防治山泥傾瀉工程 - 勘查研究、設計及建造
142	5001BX	Landslip Prevention and Mitigation Programme, 2017, Package H, Landslip Prevention and Mitigation Works - Investigation, Design and Construction	長遠防治山泥傾瀉計劃 2017 年 H 組，防治山泥傾瀉工程 - 勘查研究、設計及建造

Item 項目	Subhead 分目	Project Description	工程項目說明
143	5101CX	Landscape Improvement Works in Ngong Ping - Traffic Impact Assessment Study	昂坪環境美化工程－交通影響評估
144	5101CX	Landscape Improvement Works in Ngong Ping - Preliminary Environmental Review	昂坪環境美化工程－初步環境檢討
145	5101CX	Review of Studies on Climate Change and its Implications on the Design of Coastal Structures - Feasibility Study	檢討氣候變化的研究如何影響海濱構築物設計-可行性研究
146	5101CX	Engineering Feasibility Studies for Proposed Near Shore Reclamation at Lung Kwu Tan	擬議龍鼓灘近岸填海的工程可行性研究
147	5101CX	Engineering Feasibility Studies for Proposed Near Shore Reclamation at Siu Ho Wan	擬議小蠔灣近岸填海的工程可行性研究
148	5101CX	Engineering Feasibility Studies for Proposed Near Shore Reclamation at Sunny Bay	擬議欣澳近岸填海的工程可行性研究
149	5101CX	Preliminary Integrated Development Study on Reclamation in association with Relocation of Sai Kung Sewage Treatment Works - Consultants' fees and Site Investigation	相連搬遷西貢污水處理廠的初步綜合填海發展研究－顧問費用和工地勘測
150	5101CX	Study on the technical issues related to the potential reclamation site at Ma Liu Shui - Consultants fees	馬料水具潛力填海地點的技術議題研究－顧問費用
151	5101CX	Technical Study on Transport Infrastructure at Kennedy Town for Connecting to East Lantau Metropolis	連接堅尼地城與東大嶼都會的運輸基建技術性研究
152	5101CX	Technical Study on Landside Development at Siu Ho Wan	小蠔灣陸上發展的技術性研究
153	5101CX	The Application of Sediment Treatment Technologies for Beneficial Reuse and Handling of Sediment and the Integrated Use of Confined Disposal Facilities in Future Reclamation Projects in Hong Kong - Feasibility Study	沉積物處理及應用與填海工程及密閉卸置設施之綜合應用的可行性研究
154	5101CX	Feasibility Study for Identification of New Quarry Sites in Hong Kong - consultants' fees and ground investigation	香港新石礦場選址的可行性研究－顧問費用及土地勘測
155	5101CX	Technical Study on Potential Quarry Sites at Tuen Mun West – Feasibility Study – Consultants' Fees and Ground Investigation	屯門西具潛力石礦場地點的技術性研究－可行性研究－顧問費用及土地勘測

Item 項目	Subhead 分目	Project Description	工程項目說明
156	5101CX	Study on Squatter Areas for Non-Development Clearance (Slope Safety) – Consultants' Fees	寮屋區非發展性清拆研究(斜坡安全)-顧問費用
157	5101CX	Technical Study on Underground Quarrying in Hong Kong - Consultants' Fees and Ground Investigation	香港地下採石技術性研究-顧問費用及土地勘測
158	5101CX	Engineering Feasibility Study on Columbarium Development for Two Potential Sites in Eastern District	東區兩幅土地作骨灰龕發展用途工程可行性研究
159	5101CX	Engineering Feasibility Study on Columbarium Development for a Potential Site in Kwai Tsing District	葵青區一幅土地作骨灰龕發展用途工程可行性研究
160	5101CX	Engineering Feasibility Study on Columbarium Development for a Potential Site in Sai Kung District	西貢區一幅土地作骨灰龕發展用途工程可行性研究
161	5101CX	Transport and Land Use Assessment - Feasibility Study - consultants' fees	運輸與土地用途評估 - 可行性研究 - 顧問費用
162	5101CX	Investigation Studies for Pier Improvement at Leung Shuen Wan, Kau Sai Village, Lai Chi Chong, Sham Chung and Sam Mun Tsai	糧船灣、濠西村、荔枝莊、深涌及三門仔村碼頭改善工程研究 - 勘查研究
163	5101CX	Investigation Studies for Pier Improvement at Yung Shue Wan, Shek Tsai Wan, Yi O and Ma Wan Chung	榕樹灣、石仔灣、二澳及馬灣涌碼頭改善工程研究 - 勘查研究
164	5101CX	Site Trials of Eco-shoreline on Seawalls at Sai Kung, Lung Kwu Tan and Ma Liu Shui	在西貢、龍鼓灘和馬料水海堤進行生態海岸線實地試驗-可行性研究
165	5101CX	Technical Study on Potential Quarry Site at Tsing Yi Southwest – Feasibility Study – Consultants' Fees and Ground Investigation	青衣西南具潛力石礦場地點的技術性研究 - 可行性研究-顧問費用及土地勘測
166	5101DX	Study on planning of future environmental infrastructure facilities for waste treatment and transfer in Hong Kong - feasibility study	香港廢物處理及轉運環保基建設施未來計劃研究 - 可行性研究
167	5101DX	Food waste pre-treatment facilities for food waste /sewage sludge anaerobic co-digestion pilot trial - investigation, design and construction	廚餘、污泥共厭氧消化試驗計劃：廚餘預處理設施 - 勘查研究、設計及建造
168	5101DX	Provision of compensatory marine park for integrated waste management facilities at an artificial island near Shek Kwu Chau - investigation	為比鄰石鼓洲的綜合廢物管理設施提供補償性海岸公園 - 勘查

Item 項目	Subhead 分目	Project Description	工程項目說明
169	5101DX	Review of sewerage infrastructure of Tolo Harbour Effluent Export Scheme - feasibility study	吐露港經處理排放水輸送計劃的排污基建檢討 - 可行性研究
170	5101DX	Review of sewerage master plans for development of potential housing sites in north-eastern and southern Hong Kong Island - feasibility study	為香港島東北及南可供房屋發展用地進行污水收集整體計劃檢討 - 可行性研究
171	5101DX	Strategic sewerage catchment review and infrastructure planning for North District South	北區南污水集水區策略性檢討及基建規劃
172	5101DX	Feasibility study on refurbishment and enhancement of the chemical waste treatment centre for continuing operation	化學廢物處理中心更新及優化檢討可行性研究
173	5101DX	Review study for the continuing operation of chemical waste treatment centre	化學廢物處理中心接續運作檢討研究
174	5101DX	Organic waste collection and delivery to organic resources recovery centre - feasibility study	有機廢物的收集和運送至有機資源回收中心的研究
175	5101DX	Development of organic resources recovery centre (phase 2) - feasibility study	發展有機資源回收中心（第2期）- 可行性研究
176	5101DX	Development of organic resources recovery centre (phase 3) - feasibility study	發展有機資源回收中心第三期 - 可行性研究
177	5101DX	A review of the management and disposal arrangement for sewage sludge - feasibility study	檢討污水廠污泥的管理及棄置安排 - 可行性研究
178	5101DX	West New Territories landfill - study of road access (upgrading of Nim Wan Road and Deep Bay Road) - feasibility study	新界西堆填區 - 通往道路研究(提升稔灣路及深灣路) - 可行性研究
179	5101DX	Environmental review on 4 refuse transfer stations in urban area	為位於市區的四個廢物轉運站進行環境檢討
180	6100TX	Review and Investigation for provision of Bus-bus Interchange on Fanling Highway Kowloon Bound	為粉嶺公路往九龍方向設置巴士轉乘站的檢討及勘察研究
181	6100TX	Preliminary Feasibility Study for Provision of Covers on Walkways, Package 1 - Kwun Tong and Yau Tsim Mong	在行人通道加設上蓋工程，第一期，觀塘及油尖旺 - 初步可行性研究

Item 項目	Subhead 分目	Project Description	工程項目說明
182	6100TX	Preliminary Feasibility Study for Provision of Covers on Walkways, Package 2 - Central & Western, Southern, Kowloon City and Wong Tai Sin	在行人通道加設上蓋工程，第二期，中西區、南區、九龍城及黃大仙 — 初步可行性研究
183	6100TX	Study on Improvement of Electronic Audible Traffic Signals at Signalised Pedestrian Crossings in Hong Kong - Feasibility Study	研究改善全港燈號控制行人過路處的電子發聲交通訊號 — 可行性研究
184	6100TX	Preliminary Feasibility Study for Provision of Covers on Walkways, Package 3 - North, Tai Po, Sai Kung and Tsuen Wan	在行人通道加設上蓋工程，第三期，北區、大埔、西貢及荃灣 — 初步可行性研究
185	6100TX	Preliminary Feasibility Study for Provision of Covers on Walkways, Package 4 - Eastern, Sha Tin, Kwai Tsing and Tuen Mun	在行人通道加設上蓋工程，第四期，東區、沙田、葵青及屯門 — 初步可行性研究
186	6100TX	Review of Assessment Mechanism for Hillside Escalator Links and Elevator Systems and Preliminary Feasibility Studies - Feasibility Study	檢討上坡地區自動扶梯連接系統和升降機系統評審機制及初步可行性研究 - 可行性研究
187	6100TX	Pedestrian Connectivity in Hong Kong Island North from Wan Chai to Sheung Wan - Feasibility Study	港島北灣仔至上環行人網絡連通性研究 - 可行性研究
188	6100TX	Electronic Road Pricing Pilot Scheme in Central and its adjacent areas – Feasibility Study	中環及其鄰近地區電子道路收費先導計劃 - 可行性研究
189	7016CX	Provision of covered walkway connecting to Pok Fu Lam Road (Tower 3, Belcher's) and HKU Station - Stage I feasibility study	興建連接薄扶林道(寶翠園第三座)至香港大學站之間行人道遮雨屏 - 第一階段可行性研究
190	7016CX	Improvement works of the Promenade from Kennedy Town to Aberdeen (consultancy study report Scheme 1)	連接堅尼地城至香港仔的海濱長廊(顧問研究報告方案一)的改善工程
191	7016CX	Conversion works of Shek O Obstacle Golf Course (preliminary feasibility study and design)	石澳障礙高爾夫球場改建工程(初步可行性研究及設計)
192	7016CX	Improvement works to the staircase linking Lei Tung Estate and Yuk Kwai Shan Pavilion (to conduct preliminary feasibility study first)	利東邨通往玉桂山涼亭樓梯改善工程(進行初步可行性研究)
193	7016CX	Extension of the Waterfall Bay Park (for connecting to the Cyberport) (feasibility study)	伸延瀑布灣公園(以連接數碼港)(可行性研究)
194	7016CX	Conversion of Land near 11SE-A/R56 and 11SE-A/R57 at Dragon Road into a rest garden (feasibility study)	改建皇龍道近11SE-A/R56及11SE-A/R57的政府空置土地為休憩公園

Item 項目	Subhead 分目	Project Description	工程項目說明
195	7016CX	Provision of covered walkway at Sham Shing Road - feasibility study	深盛路行人路上蓋設置工程 - 可行性研究
196	7016CX	Feasibility study for construction of pet garden at Ngau Chi Wan Park	就牛池灣公園加建寵物公園進行初步可行性研究
197	7016CX	Conversion of former Cat Street Bazaar into sitting-out area - feasibility study	中環樓梯街與弓絃巷交界空地興建為休憩用地工程 - 前期研究工程
198	7016CX	Construction of a trail along the rocky shore at Sandy Bay (to conduct preliminary feasibility study first)	於沙灣石灘建造小徑（先進行前期可行性研究）
199	7016CX	Construction of a community garden at the site near Ap Lei Chau Praya Road (feasibility study and consultancy fee of the whole project)	於近鴨脷洲海旁道的土地進行社區園圃建設工程（可行性研究及整項工程的顧問費用）
200	7100CX	Planning and Engineering Study on Future Land Use at Ex-Lamma Quarry Area at Sok Kwu Wan, Lamma Island - Feasibility Study	南丫島索罟灣前南丫石礦場地區未來土地用途發展規劃及工程研究—可行性研究
201	7100CX	Review of the feasibility of the proposed boardwalk underneath Island Eastern Corridor	東區走廊之下擬建行人板道的可行性檢討
202	7100CX	Feasibility Study for Government Flying Service Helicopter Forward Base	政府飛行服務隊直升機衛星基地可行性研究
203	7100CX	Preliminary Feasibility Study of Spa and Resort Development at Cheung Sha and Soko Islands	長沙與索罟群島的水療度假村發展的初步可行性研究
204	7100CX	Preliminary Feasibility Study of Cable Car System from Ngong Ping to Tai O	由昂坪延伸至大澳的纜車系統的初步可行性研究
205	7100CX	Study for Strategy/Direction of Recreational Tourism Developments in Lantau	大嶼山康樂及旅遊發展策略可行性研究
206	7100CX	Preliminary Feasibility Study of Traffic and Transport for Lantau, Coastal Road between Tung Chung and Tai O and Connection between North Lantau and Mui Wo	大嶼山的交通運輸基建網絡、東涌至大澳的沿海公路及北大嶼山至梅窩連接路的初步可行性研究
207	7100CX	Preliminary Feasibility Study on Providing/Expanding the Existing/Planned Cycle Track/Mountain Bike Trail Networks in Lantau	擴建大嶼山單車徑/越野單車徑網絡的初步可行性研究



Item 項目	Subhead 分目	Project Description	工程項目說明
208	7100CX	Kai Tak Development – Feasibility Study on Further Improvement of Water Quality at Kai Tak Approach Channel and Kwun Tong Typhoon Shelter	啟德發展計劃-進一步改善啟德明渠進口道及觀塘避風塘水質的可行性研究
209	7100CX	Feasibility Study on Cycle Track Network in Kai Tak Development	啟德發展區單車徑網絡可行性研究
210	7100CX	Kai Tak Development - Further Review on Development Intensity	啟德發展計劃-發展密度的進一步檢討
211	7100CX	Study on Design Control and Guidelines for Kai Tak Promenades	啟德海濱長廊設計守則及指引的研究
212	7100CX	Preliminary Feasibility Study on Developing the New Territories North	發展新界北部地區初步可行性研究
213	7100CX	Planning and Engineering Review for Accommodating Additional Population in the North East New Territories New Development Areas (NENT NDAs) due to Co-locating Police Facilities and for Remaining Works Packages of the NENT NDAs (P&E Review)	新界東北新發展區因搬遷警察設施及為餘下工程容納額外人口的規劃及工程檢討
214	7100CX	Engineering feasibility study for co-locating police facilities in Kong Nga Po	遷移警察設施往缸瓦莆的工程可行性研究
215	7100CX	Engineering Feasibility Study for the Establishment of an Agricultural Park - Feasibility Study	在古洞南設立農業園的工程可行性研究
216	7100CX	Traffic Review on Major Roads in Sha Tin – Feasibility Study	沙田主要道路交通檢討 - 可行性研究
217	7100CX	Planning and Engineering Study for Re-planning of Tseung Kwan O Area 137	重新規劃將軍澳第137區的規劃及工程研究
218	7100CX	Planning and engineering study for Tuen Mun Areas 40 and 46 and the adjoining areas	屯門40區及46區和毗連地區規劃及工程研究
219	7100CX	Pilot Scheme of Provision of Underground Bicycle Parking System - Investigation	地下單車停泊系統先導計劃 - 勘查研究
220	7100CX	Study on Land Requirements for Construction Industry	建造業用地需求研究

Item 項目	Subhead 分目	Project Description	工程項目說明
221	7100CX	Preliminary land use study for Lam Tei Quarry and the adjoining areas	藍地石礦場及其鄰近地區初步土地用途研究
222	7100CX	Study on proposed multi-storey buildings in Yuen Long area for brownfield operations	在元朗區為棕地作業擬建多層樓宇的研究
223	7100CX	Study on proposed multi-storey buildings in Hung Shui Kiu new development area for brownfield operations	在洪水橋新發展區為棕地作業擬建多層樓宇的研究
224	7100CX	Feasibility study on environmentally friendly transport services in Hung Shui Kiu new development area and adjacent areas	洪水橋新發展區與鄰近地區環保運輸服務可行性研究
225	7100CX	Pedestrian Environment Improvement Scheme for Transformation of Kwun Tong Business Area - Feasibility Study	觀塘商貿區的行人環境改善計劃 - 可行性研究
226	7100CX	Planning and Engineering Study for the Development at Kowloon Bay Action Area of Kowloon East (P&E Study)	九龍灣行動區發展規劃及工程可行性研究
227	7100CX	Planning and Urban Review for the Developments at Kai Tak Runway Tip - Feasibility Study	啟德跑道末端的城市發展設計及規劃檢討 - 可行性研究
228	7100CX	Planning & Engineering Study on Kwun Tong Action Area - Feasibility Study	觀塘行動區規劃及工程可行性研究
229	7100CX	Study for enhancing the design of cycle track within waterfront promenades	改善海濱長廊內單車徑設計的研究
230	7100CX	Study on Existing Profile and Operations of Brownfield Sites in the New Territories – Feasibility Study	新界棕地使用及作業現況研究 - 可行性研究
231	7100CX	Site Formation and Infrastructural Works for Housing Sites A, B & C in Ma On Shan - Feasibility Study and Associated Investigation Works	馬鞍山住宅用地A、B及C的地盤平整和基礎設施工程 - 可行性研究及相關勘测工作
232	7100CX	Ecological Study for Pui O, Shui Hau, Tai O and Neighbouring Areas	貝澳、水口、大澳及其鄰近地區的生態研究
233	7100CX	Development of remaining housing sites in Yuen Long Areas 13 and 14 - feasibility study	發展元朗第13及第14區餘下房屋用地 - 可行性研究

Item 項目	Subhead 分目	Project Description	工程項目說明
234	7100CX	Technical study on potential sites in Tsing Yi Northwest for relocation of existing wholesale markets and other industrial uses	發展青衣西北具潛力用地作遷移現有批發市場及其他工業用途的技術研究
235	7100CX	Feasibility study on Fostering a Pedestrian and Bicycle-friendly Environment in Hung Shui Kiu new development area and Yuen Long South	洪水橋新發展區及元朗南發展推動行人及單車友善環境可行性研究
236	7100CX	Feasibility Study on Traffic Improvement Scheme for Kam Sheung Road	錦上路交通改善方案的可行性研究
237	7100CX	Study on the Revitalisation of Disused Ferry Piers in Victoria Harbour	活化維多利亞港內廢棄碼頭的研究
238	7100CX	Feasibility Study of Traffic Improvement Schemes with an Embankment Site for Sports Field and Road Use in connection with the Proposed Development in Braemar Hill	配合擬議的寶馬山房屋發展計劃提出的交通改善方案和相關運動場重置及道路興建所需的土地平整工程的可行性研究
239	8100QX	Technical study for re-development of existing campus in IVE(Sha Tin)	職業訓練局重建現有香港專業教育學院（沙田）院校之技術研究
240	8100QX	Pre-Construction Works for Development of the Aircraft and Marine Engineering Centre at Tsing Yi (Note 1)	職業訓練局飛機及航海工程中心發展項目(青衣)之施工前工程
241	9100WX	Study on the design and acceptance criteria of fibre-reinforced plastic lining	玻璃纖維強化塑膠搪層的設計及驗收準則研究
242	9100WX	Employment of consultants for the provision of services to improve the safety of Tai Tam Intermediate Reservoir	委聘顧問公司提供服務以改善大潭中水塘的安全
243	9100WX	Improvement of Tai Lam Chung (Sections A,C, I&H, K), Shek Pik (Sections E&F), High Island (Section JA1), Tung Tsz (Plover Cove) and Tai Mei Tuk Catchwater Systems - feasibility study	大欖涌(A, C, I和H及K段), 石壁(E和F段), 萬宜(JA1段), 洞梓(船灣)及大美督引水道系統改善工程 - 可行性研究
244	9100WX	Relocation of Tsuen Wan No. 2 Fresh Water Service Reservoir to Cavern – Feasibility Study	搬遷荃灣二號食水配水庫往岩洞 - 可行性研究
245	9100WX	Uprating of Shouson Hill fresh water supply system – site investigation, traffic impact assessment and landscape design	壽臣山食水供應系統提升工程 - 地盤勘查、交通影響評估及園景設計
246	9100WX	Modernisation of East Wing of Tsuen Wan water treatment works - investigation study	荃灣濾水廠東翼現代化工程 - 勘查研究

Item 項目	Subhead 分目	Project Description	工程項目說明
247	9100WX	Design and construction for first stage of desalination plant at Tseung Kwan O - site investigation, traffic impact assessment and landscape design for the proposed mainlaying works	將軍澳海水化淡廠第一階段的設計及施工 - 水管敷設工程的地盤勘查、交通影響評估及園景設計
248	9100WX	Improvement of water supply to Sheung Shui and Fanling - site investigation, traffic impact assessment, landscape design and advisory services on New Engineering Contract and Building Information Modelling	上水及粉嶺的供水系統改善計劃 - 地盤勘查、交通影響評估、園景設計及新工程合約和建築信息模擬顧問服務
249	9100WX	Improvement of water supply for Tai O facelift – architectural and landscape design, and advisory services on New Engineering Contract	配合改善大澳面貌的供水改善 - 建築及園景設計和新工程合約顧問服務
250	9100WX	Improvement of Shing Mun, Beacon Hill, Golden Hill and Tai Lam Chung (Sections L, M, N & O) catchwater systems – investigation and detailed design	城門、畢架山、金山和大欖涌(L, M, N及O段)引水道系統改善工程 - 勘查研究及詳細設計
251	9100WX	Uprating of Chai Wan salt water supply system - site investigation, landscaping design and traffic impact assessment	柴灣食水供應系統提升工程 - 地盤勘查、園景設計及交通影響評估
252	9100WX	Updating of Sheung Wong Yi Au fresh water supply system - site investigation, traffic impact assessment, ecological assessment, landscape design and advisory services on Building Information Modelling	上黃宜坳食水供應系統提升工程 - 地盤勘查、交通影響評估、生態評估、園景設計及建築信息模擬的顧問服務
253	9100WX	Consultancy study of large scale implementation of floating photovoltaic farms at 17 impounding reservoirs	在水務署17個水塘大規模建造浮動太陽能發電場的顧問研究服務
254	9100WX	Review of the Engineering Strategy for the Total Water Management in Hong Kong	香港全面水資源管理工程策略研究
255	9100WX	Design and construction for salt water supply to Sha Tin Area 52, Shui Chuen O – site investigation, traffic impact assessment and landscape design	沙田52區水泉澳鹹水供應系統的設計及施工 - 地盤勘查、交通影響評估及園景設計
256	9100WX	Benchmarking Study on Worldwide Specifications of Pipe Materials and Mainlaying Practices – Investigation	水管物料國際標準及敷設水管技術之基準研究
257	9100WX	Alternative raw water supply to Yau Kom Tau water treatment works from Au Tau raw water pumping station – investigation and detailed design	凹頭原水抽水站至油柑頭濾水廠備用原水供應工程 - 勘察研究及詳細設計
258	9100WX	Uprating of Tung Chung fresh water supply system - site investigation, landscape design and traffic impact assessment	東涌食水供應系統工程 - 勘探工程、園林設計和交通影響評估
259	9100WX	Water Supply to New Housing Developments in Sheung Shui and Fanling - Investigation and Design	上水及粉嶺新房屋發展供水計劃 - 勘察研究及設計

Item 項目	Subhead 分目	Project Description	工程項目說明
260	9100WX	Relocation of Yau Tong Group Fresh Water and Salt Water Service Reservoirs to Caverns - Feasibility Study	搬遷油塘食水及海水配水庫群往岩洞 - 可行性研究
261	B100HX	Engineering study review for site formation and infrastructure works at San Hing Road, Tuen Mun - investigation	屯門新慶路工地平整及基礎設施工程的研究檢討 - 勘查研究
262	B100HX	Engineering study for site formation and infrastructural works at Hong Po Road	康寶路地盤平整和基礎設施工程的工程研究
263	B100HX	Infrastructural works for proposed developments at Queen's Hill, Fanling - design and investigation	粉嶺皇后山發展的基礎設施工程 - 設計及勘查研究
264	B100HX	Site formation and infrastructural works for proposed public housing developments at Pokfulam South - feasibility study	薄扶林南擬議公營房屋發展的工地平整及基礎設施工程 - 可行性研究
265	B100HX	Site formation and infrastructural works for the initial sites at Kam Tin South, Yuen Long - design and investigation	元朗錦田南初期用地的地盤平整和基礎設施工程 - 設計及勘查研究
266	B100HX	Site formation and infrastructural works for nine housing sites at Tseung Kwan O - feasibility study	將軍澳九幅房屋用地的工地平整及基礎設施工程 - 可行性研究
267	B100HX	Road and associated infrastructural works for proposed public housing development at the Lin Cheung Road Site, Sham Shui Po (formerly Cheung Sha Wan Wholesale Food Market Phase 2 Site) - design and investigation	深水埗連翔道用地（前長沙灣副食品批發市場第二期用地）擬建公營房屋發展的道路及基礎設施工程 - 設計及勘查研究
268	B100HX	Site formation and infrastructural works for public housing development at Wang Chau, Yuen Long - design and investigation	元朗橫洲公營房屋發展的工地平整及基礎設施工程 - 設計及勘查研究
269	B100HX	Site formation and infrastructural works for public housing development at Chung Nga Road and Area 9, Tai Po - design and investigation	大埔第9區及頌雅路公營房屋發展計劃的工地平整及基礎設施工程 - 設計及勘查研究
270	B100HX	Site formation and infrastructural works for five public housing sites in Ma On Shan - feasibility study and associated site investigation works	馬鞍山區五幅公營房屋發展用地的工地平整和基礎設施工程 - 可行性研究及地盤勘测工程
271	B100HX	Preliminary development review for housing sites at Tuen Mun Central	屯門中房屋用地初步發展研究
272	B100HX	Main engineering infrastructural works for housing development in Area 54, Tung Chung - investigation, design and construction	東涌第54區房屋發展的主要基礎設施工程 - 勘查研究、設計及建造

Item 項目	Subhead 分目	Project Description	工程項目說明
273	B100HX	Site formation and infrastructural works at Area 48, Fanling - design and investigation	粉嶺第48區的地盤平整和基礎設施工程 - 設計及勘查研究
274	B100HX	Site formation and infrastructure works at Ka Wai Man Road and ex-Mount Davis Cottage Area, Kennedy Town - detailed design and site investigation	堅尼地城加惠民道及前摩星嶺平房區的地盤平整和基礎設施工程 - 設計及勘查研究
275	B100HX	Environmental review, engineering studies and site investigation for road improvement works at Ma On Shan, Sha Tin	沙田馬鞍山路改善工程的環境評審，工程研究及地盤勘察
276	B100HX	Feasibility study for public housing development at Wang Chiu Road, Kwun Tong	觀塘宏照道公營房屋發展可行性研究
277	B100HX	Site formation and infrastructural works for the development at Long Bin, Yuen Long - feasibility study	元朗朗邊發展的地盤平整和基礎設施工程 - 可行性研究
278	B100HX	AVA and VIA for potential housing sites in the vicinity of Tseung Kwan O - feasibility study	將軍澳具潛力房屋用地的空氣流通和視覺影響評估 - 可行性研究
279	B100HX	Engineering feasibility study for public housing sites 1 and 2 in Fanling/Sheung Shui Area 30	粉嶺／上水第30區1號及2號地盤公營房屋用地的工程可行性研究
280	B100HX	Site formation and infrastructural works for the development near Tan Kwai Tsuen, Yuen Long - feasibility study	元朗鄰近丹桂村發展的地盤平整和基礎設施工程 - 可行性研究
281	B100HX	EFS Yan Wing Street	欣榮街工程可行性研究
282	B100HX	Technical assessment at San Kwai Street, Kwai Chung	葵涌新葵街技術評估
283	B100HX	Technical studies for proposed public housing development at On Sum Street, Shek Mun	石門安心街擬議公營房屋發展的技術研究
284	B100HX	Diamond Hill Comprehensive Development Area Site - feasibility study	鑽石山綜合發展區用地 - 可行性研究
285	B100HX	Technical study for proposed housing development at Java Road, North Point	北角渣華道公營房屋發展的技術研究

Item 項目	Subhead 分目	Project Description	工程項目說明
286	B100HX	Site formation and infrastructural works for public housing development at Pok Fu Lam South - design and investigation	薄扶林南公營房屋發展的工地平整及基礎設施工程 - 設計及勘查研究
287	B100HX	Feasibility study for public housing site at Po Shek Wu Road, Sheung Shui	上水寶石湖路公營房屋用地的可行性研究
288	B100HX	Feasibility study for public housing development at Ko Shan Road, To Kwa Wan	土瓜灣高山道公共房屋發展可行性研究
289	B100HX	Site formation and infrastructural works for development at Fung Tak Road in Diamond Hill - feasibility study	鑽石山鳳德道發展的工地平整及基礎設施工程 - 可行性研究
290	B100HX	Site formation and infrastructural works at Shek Pai Street, Kwai Chung - feasibility study	葵涌石排街的工地平整及基礎設施工程 - 可行性研究
291	B100HX	Feasibility study for public housing development at Fung Shing Street, Ngau Chi Wan	牛池灣豐盛街公營房屋發展的可行性研究
292	B100HX	Site formation and infrastructural works for proposed public housing developments in Yuen Long North - feasibility study	元朗北擬議公營房屋發展的工地平整及基礎設施工程 - 可行性研究
293	B100HX	Site formation and infrastructural works for development at Pik Wan Road in Yau Tong - design and investigation	油塘碧雲道發展的工地平整及基礎設施工程 - 設計及勘查研究
294	B100HX	Engineering Feasibility Study for Site Formation and Infrastructural Works for Remaining Phases of Public Housing Developments at Wang Chau, Yuen Long	元朗橫洲其餘公營房屋發展的工地平整及基礎設施工程的工程可行性研究
295	B100HX	Site formation and infrastructure works for public housing developments at Tseung Kwan O - design and investigation	將軍澳區公營房屋發展的地盤平整和基礎設施工程 - 設計及勘查研究
296	B100HX	Site formation and infrastructural works for public housing development sites near Po Lam Road South in Tseung Kwan O - feasibility study and associated site investigation works	將軍澳近寶琳南路公營房屋發展用地的工地平整和基礎設施工程 - 可行性研究及相關地盤勘测工程
297	B100HX	4 Engineering Feasibility Studies for Site Formation and Infrastructure Works for Housing Developments in North District - Feasibility Study	北區房屋發展之工地平整及基礎設施的四項工程技術可行性研究 - 可行性研究
298	B100HX	Site formation and infrastructure works for public housing development at Cheung Muk Tau - design and investigation	樟木頭公營房屋發展的工地平整及基礎設施工程 - 設計及勘查研究

Item 項目	Subhead 分目	Project Description	工程項目說明
299	B100HX	Site formation and infrastructural works for the developments at Long Bin, Yuen Long - design and investigation	元朗朗邊發展的地盤平整和基礎設施工程 - 設計及勘查研究
300	B100HX	Site formation and infrastructural works for proposed public housing site near Cheung Shan Estate, Tsuen Wan - feasibility study	荃灣象山邨毗鄰公營房屋地盤的工地平整及基礎設施工程 - 可行性研究
301	B100HX	Site formation and infrastructural works for the development at Tuen Mun Central - design and investigation	屯門中發展之工地平整及基礎設施工程 - 設計及勘查研究
302	B100HX	Site Formation and Infrastructure Works for Development at To Yuen Tung, Tai Po - Feasibility Study	大埔桃源洞發展之工地平整及基礎設施工程 - 可行性研究
303	B100HX	Site formation and infrastructure works for public housing developments at Chung Nga Road and Area 9, Tai Po - Phase 2 - Site Investigation	大埔第9區及頌雅路公營房屋發展計劃的工地平整及基礎設施工程 - 第二期 - 勘查研究
304	B100HX	Engineering feasibility study for public housing development at Chak On Road	澤安道公營房屋發展工程的可行性研究



## Proposed Study Items to be Created under 2018-19 Block Allocation

### 於2018-19年度整體撥款建議開立的新研究項目

Item 項目	Subhead 分目	Project Description	工程項目說明
1	4100DX	Hung Shui Kiu sewage treatment works – feasibility study	洪水橋污水處理廠 — 可行性研究
2	4100DX	Yuen Long South sewage treatment works – feasibility study	元朗南污水處理廠 — 可行性研究
3	4100DX	Extension of Siu Ho Wan sewage treatment works – feasibility study	小蠔灣污水處理廠擴建工程—可行性研究
4	4100DX	Eco-hydraulics study on green channels - stage 3	綠化河道的生態水力學研究 - 第3階段
5	5001BX	Landslip Prevention and Mitigation Programme, 2018, Package A, Landslip Prevention and Mitigation Works - Investigation, Design and Construction	長遠防治山泥傾瀉計劃 2018 年 A 組，防治山泥傾瀉工程 - 勘查研究、設計及建造
6	5001BX	Landslip Prevention and Mitigation Programme, 2018, Package B, Landslip Prevention and Mitigation Works - Investigation, Design and Construction	長遠防治山泥傾瀉計劃 2018 年 B 組，防治山泥傾瀉工程 - 勘查研究、設計及建造
7	5001BX	Landslip Prevention and Mitigation Programme, 2018, Package C, Landslip Prevention and Mitigation Works - Investigation, Design and Construction	長遠防治山泥傾瀉計劃 2018 年 C 組，防治山泥傾瀉工程 - 勘查研究、設計及建造
8	5001BX	Landslip Prevention and Mitigation Programme, 2018, Package D, Landslip Prevention and Mitigation Works - Investigation, Design and Construction	長遠防治山泥傾瀉計劃 2018 年 D 組，防治山泥傾瀉工程 - 勘查研究、設計及建造
9	5001BX	Study of Landslides Occurring on Hong Kong Island and Outlying Islands between 2019 and 2021 - Feasibility Study	2019年至2021年香港島及離島山泥傾瀉調查顧問合約 - 可行性研究
10	5001BX	Study of Landslides Occurring in Kowloon and the New Territories between 2019 and 2021 - Feasibility Study	2019年至2021年九龍及新界山泥傾瀉調查顧問合約 - 可行性研究
11	5101CX	Study for Pier Improvement at Lai Chi Wo and Tung Ping Chau - Investigation	荔枝窩及東平洲碼頭改善工程研究 - 勘查研究
12	5101CX	Relocation of Kowloon Bay Public Works Central Laboratory to Caverns - Feasibility Study	搬遷九龍灣工務中央試驗所往岩洞 - 可行性研究
13	5101CX	Pilot Planning and Engineering Study on Development of Selected Strategic Cavern Areas – Feasibility Study	策略性岩洞區發展規劃及工程先導研究-可行性研究
14	5101DX	Study of access options to Lap Sap Wan in Shek O for removal of marine refuse	研究通往石澳垃圾灣以清理海上垃圾的方案

Item 項目	Subhead 分目	Project Description	工程項目說明
15	5101DX	Sewerage in Wu Kau Tang - feasibility study	烏蛟騰公共污水收集系統 — 可行性研究
16	6100TX	Improvements to Pedestrian Network in Causeway Bay - Feasibility Study	銅鑼灣行人網絡改善計劃—可行性研究
17	6100TX	Preliminary Feasibility Study for Provision of Covers on Walkways, Package 5 - Wan Chai, Sham Shui Po, Islands and Yuen Long	在行人通道加設上蓋工程，第五期，灣仔、深水埗、離島及元朗 — 初步可行性研究
18	6100TX	Study on Cable Dehumidification System for Tsing Ma Bridge	青馬大橋主纜除濕系統研究
19	6100TX	Feasibility Review for Retrofitting Barrier-free Access Facilities at Grade-Separated separated Walkways	為分層行人通道加裝無障礙通道設施可行性檢討
20	6100TX	Review of Potential Hazards in Hong Kong Road Network	香港道路網的安全檢視
21	7100CX	Investigation Study for Revised Trunk Road T4	T4號主幹路 - 研究
22	7100CX	Urban design study for the future town centre near the proposed Hung Shui Kiu Station and the district commercial node near the existing Tin Shui Wai Station	擬議洪水橋站附近的未來市中心區及現有水圍站附近的未來商業中心區的城市設計研究
23	7100CX	Feasibility study on flood retention facilities and river revitalisation for Hung Shui Kiu New Development Area	洪水橋新發展區蓄洪設施及河道活化可行性研究
24	7100CX	Feasibility study for provision of a District Cooling System at Hung Shui Kiu New Development Area	在洪水橋新發展區提供區域供冷系統的可行性研究
25	7100CX	Consultancy study for enhancing the way-finding experience from hinterland to and within harbourfront areas	改善海濱用地內及與內陸間行人導向的顧問研究
26	9100WX	Reprovisioning of Harcourt Road fresh water pumping station at Lockhart Road Playground – traffic impact assessment, architectural and landscape design, BEAM consultancy services and site investigation	夏慤道食水抽水站重置工程 - 交通影響評估、建築及園景設計、綠建環評顧問服務和地盤勘查
27	B100HX	Site formation and infrastructure works for public housing development near Tan Kwai Tsuen, Yuen Long - design and investigation	元朗丹桂村公營房屋發展之地盤平整和基礎設施工程 - 設計及勘查研究