

**For discussion
on 2 February 2018**

Legislative Council Panel on Education

**8033ED - Provision of Boarding Section of
Hong Chi Pinehill School and reprovisioning of
Boarding Section of Hong Chi Pinehill No. 2 School in Tai Po**

PURPOSE

We need to construct a new block at the Pinehill Village¹, Tai Po to accommodate a new boarding section for the Hong Chi Pinehill School and reprovision the existing boarding section of the Hong Chi Pinehill No. 2 School. This paper briefs Members on the proposed capital works project and timeline.

PROJECT SCOPE AND NATURE

2. The project scope involves the construction of a new block to house two separate boarding sections, providing 60 new boarding places for the Hong Chi Pinehill School for students with moderate intellectual disability (MoID) and 60 reprovisioned boarding places for the Hong Chi Pinehill No. 2 School for students with severe intellectual disability (SID). The site area is about 2 390 square metres (m²). The estimated cost of the project is about \$177.9 million in money-of-the-day (MOD) prices. The proposed scope of works for each boarding section includes:

- (a) bedrooms² to accommodate 60 boarders and study areas;
- (b) a TV/common room;
- (c) a dining/multi-purpose room;

¹ The site was allocated to the Hong Chi Association, the School Sponsoring Body of the two special schools in question through Private Treaty Grant in 1984 for provision of non-profit making services to persons with intellectual disabilities.

² Five bedrooms for Hong Chi Pinehill School and four bedrooms for Hong Chi Pinehill No. 2 School.

- (d) a kitchen and kitchen store;
- (e) a laundry;
- (f) a drying area;
- (g) a warden's office;
- (h) a houseparents' and programme workers' office;
- (i) a nurse's duty room/sick bay;
- (j) two sleep-in rooms for staff on night shift; and
- (k) other ancillary facilities, including stores, toilets, bathrooms, a disabled/fireman's lift, and relevant facilities for the disabled.

3. The proposed new boarding block will meet the planning target of providing 2 m² of open space per student. A site plan and an artist's impression of the new block are at Enclosures 1 and 2 respectively.

JUSTIFICATION

4. The demand for boarding places for students with MoID has been on the rise. Hence, there is a need to provide additional boarding places to alleviate the overall shortfall of boarding places for children with MoID. At present, there is no supply of MoID boarding places in the Tai Po and North Region³. Subject to the completion of the proposed new boarding section for the Hong Chi Pinehill School in Tai Po, the provision of 60 boarding places for students with MoID will help relieve both the regional and the territory-wide demand.

³ Tai Po & North is one of the seven regions for analysis of provision of school and boarding places in special schools. The other six regions are Hong Kong Island, Kowloon & Tseung Kwan O, Shatin & Sai Kung (excluding Tseung Kwan O), Kwai Tsing & Tsuen Wan, Tuen Mun & Yuen Long, and Outlying Islands.

5. It is the Government's plan to, based on the needs of the schools, improve the physical conditions and facilities of school premises not built according to the prevailing standards through re-provisioning and redevelopment. Hong Chi Pinehill No. 2 School, a school for children with SID, currently provides 60 boarding places for these children. The existing boarding section is co-located with a pre-school centre under the same School Sponsoring Body in a premises built about 50 years ago. It falls short of certain facilities such as houseparents' and programme workers' office and sleep-in-rooms for night shift staff, and some of its existing facilities such as sick bay and warden office are undersized according to prevailing standards. Due to site constraint, re-provisioning is considered the most effective way to improve the facilities and environment of the existing boarding section. The proposed new boarding block will be situated adjacent to the school. It will be more convenient for their children with SID to commute from the new boarding section to the school.

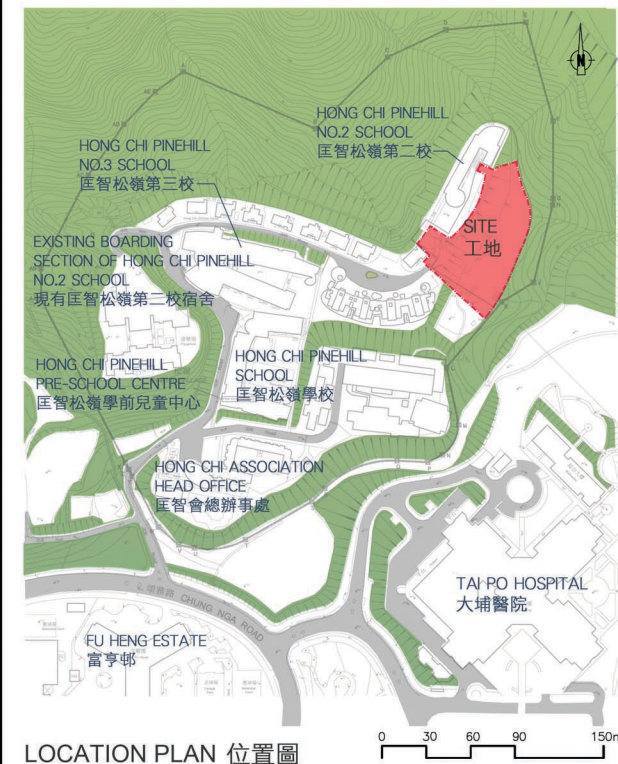
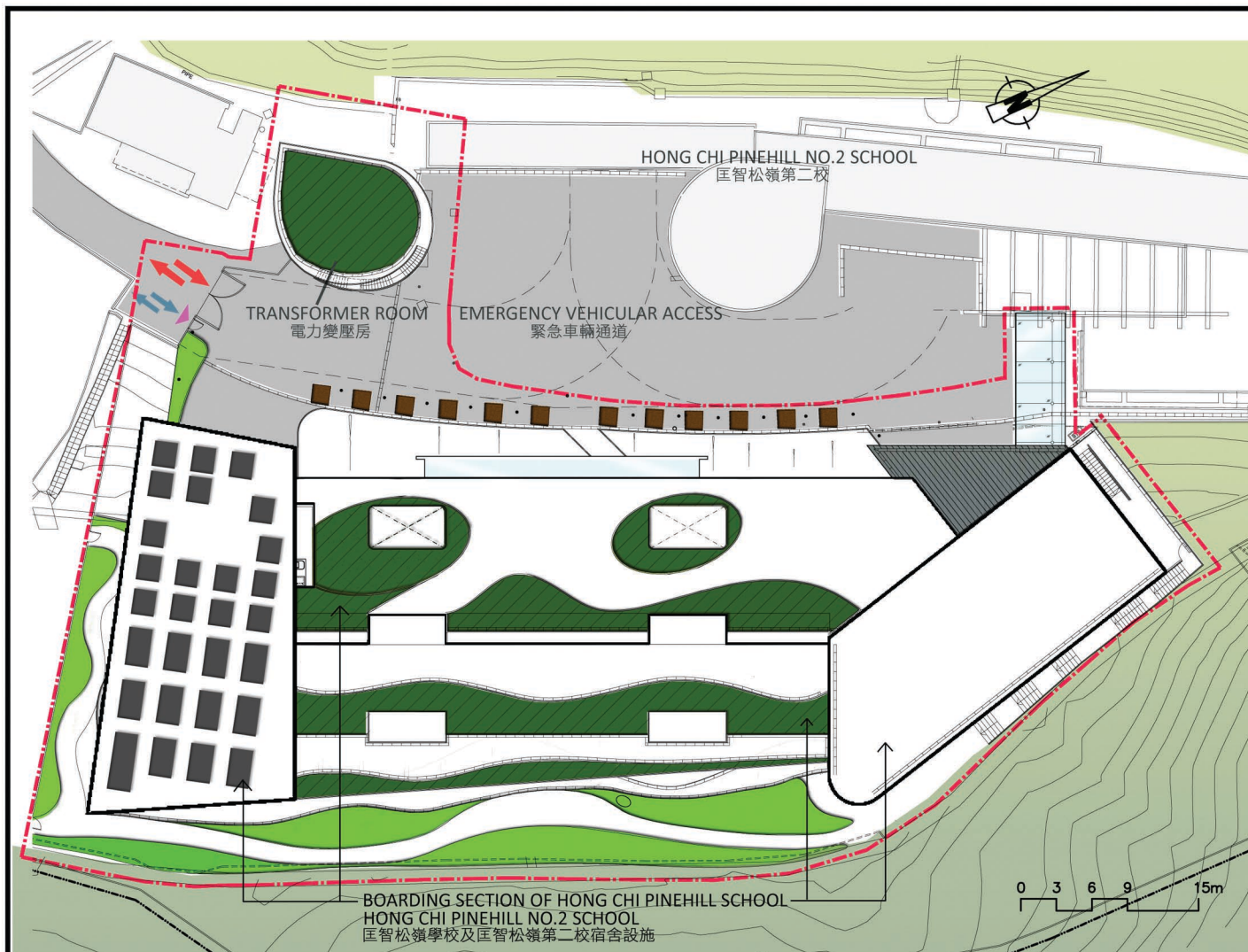
IMPLEMENTATION PLAN

6. We plan to seek the endorsement of the Public Works Subcommittee and the funding approval of the Finance Committee (FC) of the Legislative Council for the proposed project in March and May 2018 respectively. Subject to funding approval of FC, the construction works is expected to commence in the second quarter of 2018 for completion in the third quarter of 2020.

PUBLIC CONSULTATION

7. We consulted the Social Services Committee of Tai Po District Council on 10 January 2018 on this project. Members supported the project.

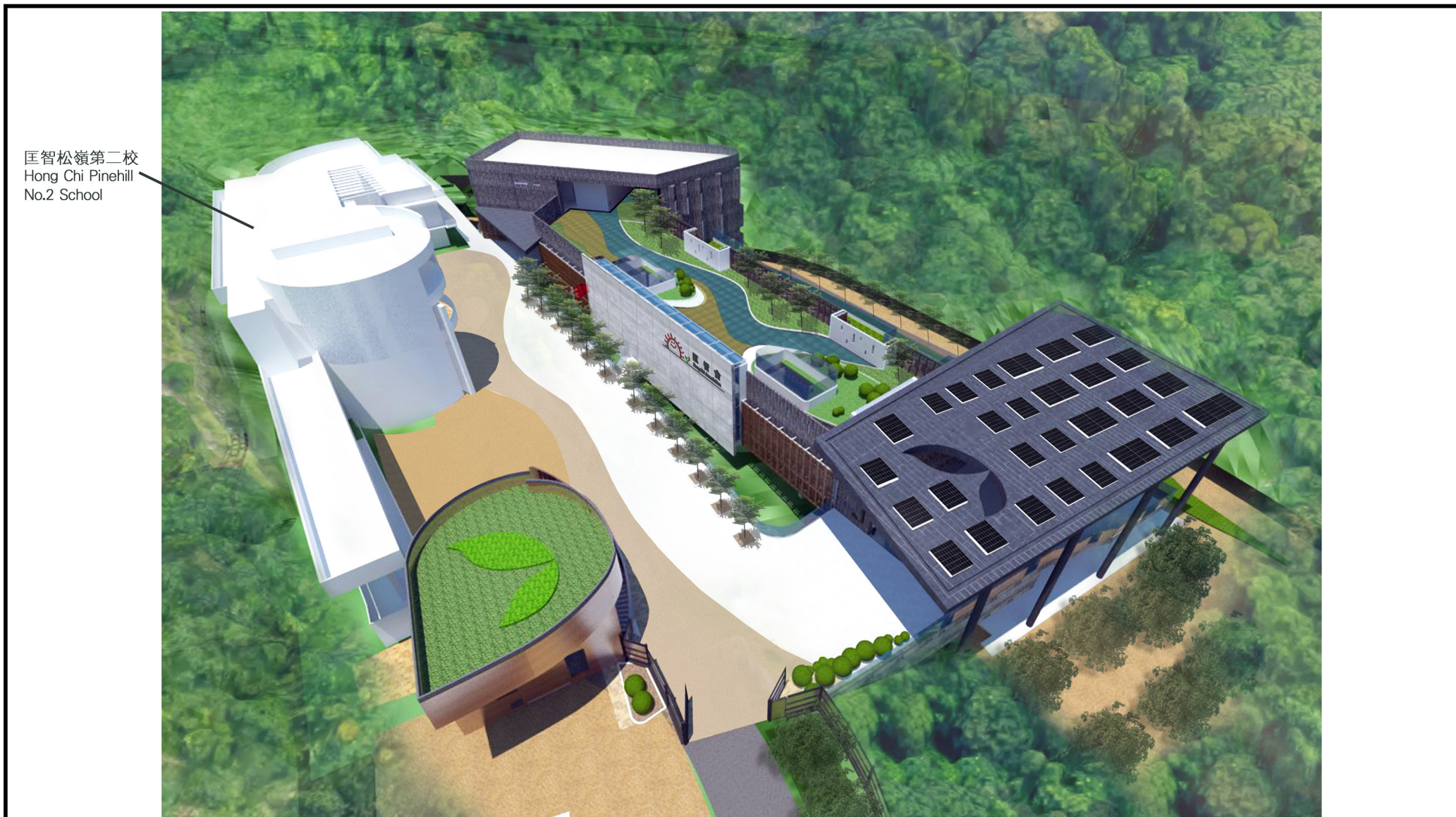
Education Bureau
January 2018



- | | |
|---------------------------------------|------------------------------|
| 無障礙出入口
BARRIER-FREE ENTRANCE/ EXIT | 太陽能光伏板
PHOTOVOLTAIC PANEL |
| 車輛出入口
VEHICULAR INGRESS/ EGRESS | 地面綠化
AT-GRADE GREENING |
| 行人出入口
PEDESTRIAN ENTRANCE/ EXIT | 屋頂綠化
LANDSCAPED ROOF |
| 工地界線
SITE BOUNDARY | |

工地平面圖
SITE PLAN

33ED
大埔匡智松嶺學校宿舍設施及重置匡智松嶺第二校宿舍設施
PROVISION OF BOARDING SECTION OF HONG CHI PINEHILL SCHOOL AND
REPROVISIONING OF BOARDING SECTION OF HONG CHI PINEHILL NO.2 SCHOOL IN TAI PO



從西南面望向宿舍的構思鳥瞰圖
AERIAL VIEW FROM SOUTH WESTERN DIRECTION (ARTIST'S IMPRESSION)

構思圖
ARTIST'S IMPRESSION

33ED
大埔匡智松嶺學校宿舍設施及重置匡智松嶺第二校宿舍設施
PROVISION OF BOARDING SECTION OF HONG CHI PINEHILL SCHOOL AND
REPROVISIONING OF BOARDING SECTION OF HONG CHI PINEHILL NO.2 SCHOOL IN TAI PO