

For discussion on
21 December 2017

Legislative Council Panel on Home Affairs

**Signature Project Scheme Projects of Southern District,
Wan Chai District and Kwun Tong District**

Purpose

This paper seeks Members' views on the following proposed projects under the Signature Project Scheme (SPS) –

- (a) “Provision of Ophthalmic Examination Services” (the Eye Examination Project) and “Provision of Shuttle Bus/Rehabilitation Bus Services” (the Bus Project) in Southern District;
- (b) “Construction of Moreton Terrace Activities Centre” (the MTAC Project) in Wan Chai District; and
- (c) “Construction of Music Fountains at Kwun Tong Promenade” (the Promenade Project) in Kwun Tong District.

SPS Projects of Southern District

2. The Southern District Council (SDC) originally proposed to implement the “Fishermen Cultural Centre” under the SPS. On 17 March 2016, SDC decided to shelve the proposed project¹ and to identify alternative SPS project proposal(s) for

¹ Under the Fishermen Cultural Centre project, seafood dining facilities would be developed near the Aberdeen Wholesale Fish Market with a view to promoting and highlighting the fishermen culture of the Southern District. In arriving at the decision to shelve the implementation of the project proposal, Southern District had considered a number of factors, including the fact that no consensus on logistics management could be reached with the only shortlisted partner organisation.

public consultation.

3. Having gauged the views of the local community, SDC proposes to use the SPS funding to implement the Eye Examination Project and the Bus Project instead. Under the Eye Examination Project, comprehensive ophthalmic examination services will be provided to residents of the Southern District who are aged 50 or above free of charge. The Eye Examination Project aims to facilitate early identification of optical abnormalities so that residents can seek further medical attention in a timely manner if necessary. Under the Bus Project, free transportation services will be provided to local residents with mobility difficulties and their caregivers to attend medical appointments at public hospitals and healthcare facilities. The Bus Project can complement existing transport services for persons with mobility difficulties. The estimated funding requirements for the Eye Examination Project and the Bus Project are \$50.1 million and \$49.9 million respectively. Details of the projects are at **Enclosure 1**.

SPS Projects of Wan Chai District and Kwun Tong District

Moreton Terrace Activities Centre Project

4. At present, the Leighton Hill Community Hall (LHCH) is the only performance venue under the management of the Home Affairs Department (HAD) in Wan Chai (WC) District. LHCH is highly popular among district organisations and government bureaux or departments for holding local and territory-wide events and activities. With LHCH being the only one performance venue under HAD's management in WC district and is heavily patronised throughout the year, there has been a strong demand from the Wan Chai District Council (WCDC), district organisations and the local community for additional performance and activity venues in the District.

5. To meet the community's demand, WCDC proposes to take forward the MTAC Project to provide an additional performance and activity venue to serve the local community.

The Promenade Project

6. The Kwun Tong District Council (KTDC) proposes to implement the Promenade Project as one of its SPS projects². In addition to injecting vibrancy into the Kwun Tong (KT) Promenade, the Promenade Project provides a platform for organising interactive water-friendly activities and mounting cultural performances.

7. Having consulted Members on the Promenade Project and the MTAC Project on 11 May 2015 and 17 July 2015 respectively, we obtained the Public Works Subcommittee (PWSC)'s endorsement for the funding proposal in respect of the projects on 20 June 2016. However, deliberation of the two projects in the Finance Committee (FC) could not be completed before the prorogation of the last term of Legislative Council in mid-July 2016.

Latest Developments

8. The overall situation in both WC and KT districts that justifies the two proposed SPS projects has remained unchanged. The local community of WC District continues to be keen to have an additional performance and activity venue in the district, while KT District's local community maintains its support for developing the Kwun Tong Promenade into a vibrant landmark of Kowloon East.

9. As the two Projects had not yet been approved by the FC in the last term of Legislative Council, we have to consult Members afresh in the current term. We have reviewed and updated the project cost estimates of the two projects. Both projects can be implemented within the original estimated funding requirements, i.e. \$140 million³ and \$53.5 million for the MTAC Project and the Promenade Project respectively. Details of the MTAC Project and the Promenade Project are at **Enclosures 2 and 3** respectively.

² The other SPS project of Kwun Tong District is the "Construction of Lift Tower at Shung Yan Street in Kwun Tong" and had been approved by the Finance Committee on 13 May 2016.

³ The \$140 million funding for the MTAC Project comprises two parts: \$100 million from the SPS and \$40 million from the Hong Kong Jockey Club Charities Trust's donation.

Advice Sought

10. Members are invited to give views on the SPS projects proposed by SDC, WCDC and KTDC. We will seek the necessary funding approval from the Legislative Council.

Background

11. As announced in the 2013 Policy Address, a one-off provision of \$100 million has been earmarked for each district to initiate project(s) under the SPS. DCs are responsible for advocating and deciding the SPS projects, as well as spearheading their implementation, including conducting district consultation, preparing implementation plans, monitoring project progress and assessing project effectiveness. The project(s) should address local needs or highlight the characteristics of the district, and have a visible and lasting impact in the community. They can be works or non-works, or a mixture of both. All the SPS projects are proposed, discussed and agreed by the relevant DCs following consultation with local residents and organisations before they are put to implementation. So far, 23 SPS projects have obtained funding approval from FC. Of them, three projects⁴ are already in service. The construction works of the remaining 20 projects are underway.

Home Affairs Bureau

Home Affairs Department

December 2017

⁴ The three projects are Kwai Tsing District's "Enhancement of Community Healthcare", Tuen Mun District's "Promotion of Youth Development in Tuen Mun" and Wong Tai Sin District's "Expansion and Improvement of Wong Tai Sin Square".

Signature Project Scheme (Southern District) –

- (i) Provision of Ophthalmic Examination Services**
- (ii) Provision of Shuttle Bus/Rehabilitation Bus Services**

Proposal and Justifications

The Southern District Council (SDC) proposes to use the funding from the Signature Project Scheme (SPS) to launch two service projects, namely (i) “Provision of Ophthalmic Examination Services”; and (ii) “Provision of Shuttle Bus/Rehabilitation Bus Services”.

(I) Provision of Ophthalmic Examination Services

2. As one of the two SPS projects proposed by SDC, the “Provision of Ophthalmic Examination Services” (the Eye Examination Project) will provide one-time ophthalmic examination services for residents of the Southern District aged 50 or above free of charge¹. It is expected to benefit about 25 000 residents who are aged 50 or above over a period of five years, with an aim to facilitate early identification of optical abnormalities and inculcate a habit of receiving regular ophthalmic examinations.

3. Specifically, the services will include four main components:

(a) Detailed eye examination

It includes best corrected visual acuity testing (provision of prescription for glasses only, frame and lenses not included), cataract assessment, glaucoma assessment, retina and macula assessment and performing specialised investigations (which include visual field tests, optical coherence tomography

¹ Residents will be required to present their Hong Kong Identity Card and proof of residential address prior to using the service.

scanning of the macula and optic disc). The detailed eye examination will be conducted by optometrists with the support of technical assistants.

(b) Brief general health check

It includes blood pressure and body mass index measurements to document any systemic problems such as hypertension. The brief general health check will be conducted by a registered nurse.

(c) Detailed non-invasive eye investigations

They cover investigations such as fundus photograph, visual field tests, and retinal scans to document possible pathologies. They allow accurate diagnosis to be made on the same day. A medical consultation will also be conducted following the detailed non-invasive eye investigations. The detailed non-invasive eye investigations and the medical consultation will be conducted by registered ophthalmologists, with the support of technical assistants.

(d) Follow-up care

An onward referral to specialist eye care at either the Eye Out-Patient Clinics under the Hospital Authority, or at any private eye clinic would be made by a registered ophthalmologist if pathologies were detected during the assessment.

4. Community promotion will be conducted to help residents understand the project and to enroll on the spot, if possible. This will comprise a series of ongoing promotional activities on the media and the setting up of promotional booths in different parts of the Southern District. Assistance from various SDC Members' offices and local non-government organisations will be sought to promote the project and to assist enrollment. Public health talks on the project and ophthalmic healthcare will also be organized to enhance the awareness and understanding of common eye diseases, and provide a channel for residents to enroll for the free eye examination.

(II) Provision of Shuttle Bus/Rehabilitation Bus Services

5. Although barrier-free traffic has been greatly improved in recent years, the transport services for the disabled to and from the hospitals in the District to attend medical appointment are still limited. Several public hospitals and healthcare facilities in the Southern District, including Queen Mary Hospital, the Duchess of Kent Children's Hospital, Tung Wah Group of Hospitals Fung Yiu King Hospital and MacLehose Medical Rehabilitation Centre, are neither conveniently located, nor easily accessible by those with impaired mobility via public transportation. Many have to change buses or minibuses, and may need to walk some distance to reach these facilities for medical appointments and consultation.

6. To complement the existing transport services for persons with impaired mobility, SDC proposes to use part of the \$100 million from the SPS to undertake the “Provision of Shuttle Bus/Rehabilitation Bus Services” (the Bus Project). The Bus Project will provide free transportation services for residents of the Southern District with impaired mobility and their caregivers to attend medical appointments at public hospitals and healthcare facilities in the district, and help fill the gap left by the existing barrier-free transport options, including “Accessible Hire Car Service”, “Easy-access bus” and “Syncab” and “Diamond Cab” which either require a pre-booking long time before the ride or are considered costly.

7. Specifically, a total of eight wheelchair accessible buses will be deployed to operate five shuttle bus service routes with fixed routes and fixed timetables, and one bus for pre-booked share-ride service mainly to and from Queen Mary Hospital and Sandy Bay (including The Duchess of Kent Children's Hospital, Tung Wah Group of Hospitals Fung Yiu King Hospital, MacLehose Medical Rehabilitation Centre, etc.) from 0730 to 1830 from Monday to Friday free of charge for a period of five years. The target group will be residents with impaired mobility living in the Southern District.

8. A total of five free shuttle bus service routes cover Wah Fu Estate,

Chi Fu Fa Yuen, Tin Wan Estate, Wah Kwai Estate, Shek Pai Wan Estate, Aberdeen Centre, Ap Lei Chau Estate, Ap Lei Chau Main Street, The South Horizons, Lei Tung Estate and Wong Chuk Hang. One bus will be provided for pre-booked share-ride service for the residents in Stanley, Big Wave Bay, Hok Tsui and Shek O.

9. The service will be launched in two phases. In Phase One, three bus routes will provide service for three months. Demand data and usage pattern in Phase One will be collected and reviewed before the remaining two bus routes and one pre-booked share-ride service commence service in Phase Two starting from the fourth month. The framework of the service bus routes is set out below².

- (a) Shek Pai Wan/Aberdeen Route
- (b) Chi Fu/Wah Fu Route
- (c) Wah Kwai/Tin Wan Route
- (d) The South Horizons/Ap Lei Chau Route
- (e) Wong Chuk Hang/Lei Tung Route
- (f) Hok Tsui/Shek O/Big Wave Bay/Stanley Route

10. Service will be provided on a first-come-first-served basis. Eligible residents in the Southern District³ could call the service hotline⁴ or use a mobile app (Android and iOS systems) to be developed for this service to reserve seats from up to seven days in advance to two hours before using the service. Alternatively, passengers could choose to queue up at bus stops for service. Each bus is equipped with a Global Positioning System (GPS) global satellite positioning device. Passengers could use the mobile app or website to find out the location of the vehicle and the estimated time of arrival, as well as check the availability of vacant seats on the vehicle to help passengers decide if they should queue up at the bus stops.

² The exact routing and combination of stops, as well as the allocation of routes for Phase One and Phase Two, will be further refined before the commencement of the bus service.

³ Residents using the service shall be required to present proof of appointments with the relevant hospitals/medical institutions upon boarding.

⁴ The service hotline will operate from 0900 to 1700 from Monday to Friday and be managed by customer service assistants. An Interactive Voice Response System (IVRS) will be operated after office hours for receiving messages.

Selection of the Partner Organisations

11. With the endorsement of SDC, the Southern District Office (SDO) issued an open invitation for proposals on 28 July 2017. The invitation was advertised on local newspapers on 8 August 2017 and 22 August 2017, and SDC's website on 28 July 2017 till the end of August 2017. By the closing date of 31 August 2017, one proposal from Department of Ophthalmology, Li Ka Shing Faculty of Medicine, The University of Hong Kong (HKU) had been received for the Eye Examination Project, and one proposal from the Hong Kong Society of Rehabilitation (HKSR) had been received for the Bus Project. Both organisations are an approved charitable institution or trust of a public character under Section 88 of the Inland Revenue Ordinance (Cap. 112).

12. The SPS Focus Group (Focus Group), which has been set up by the SDC to discuss and follow up issues relating to the SPS, approved the establishment of an assessment panel comprising its Members and representatives from Hospital Authority and the Transport Department. In September 2017, the assessment panel considered the two proposals and confirmed that they both met the requirements for delivering the two Projects. In November 2017, SDC endorsed the proposal for engaging HKU and HKSR as the partner organisation for the Eye Examination Project and the Bus Project respectively.

Sustainability

13. HKU and HKSR will seek to continue as far as practicable the respective services on a self-financing basis or with support from alternative funding source. SDC and the partner organisations are open to seeking third party financial support (sponsorship, charitable trusts, etc.) towards the end of the five-year project in order to sustain the services if response from the residents is overwhelming.

Financial Implications

14. The estimated cost for engaging HKU to deliver the services under the Eye Examination Project is \$49.7 million, which includes –

- (a) \$6.4 million as start-up cost for the procurement of essential equipment and computer system, and to launch initial public promotional activities;
- (b) \$39.0 million for employing a team of 12 staff, including ophthalmologists, optometrists, registered nurse, technical assistants, project manager and secretariat assistants, by HKU for the delivery of the project;
- (c) \$3.5 million for maintenance, rental, insurance, administrative expenses, etc.; and
- (d) \$0.8 million will be used for ongoing community promotion.

In addition, \$0.4 million will be earmarked for the employment of non-civil service contract staff by SDO to oversee the project implementation. The total funding requirement of the Eye Examination Project is \$50.1 million.

15. The estimated cost for engaging the service of HKSR to deliver the services under the Bus Project is \$49.5 million, which includes –

- (a) \$9.5 million as start-up cost for the procurement of eight new buses, the reservation system, GPS global satellite positioning devices, design of the mobile app and website, as well as the setting up of bus stops and initial promotion campaign;
- (b) \$23.5 million for employing a team of 23 staff members, including drivers, attendants, customer service assistants, etc. by HKSR for the delivery of the project;
- (c) \$10.2 million for running costs such as fuel, repair and maintenance of vehicles, vehicle insurance, licence fees, etc.; and
- (d) \$6.3 million for other expenses such as staff insurance, rental, maintenance of the booking system and other equipment, ongoing

community promotion, etc.

In addition, \$0.4 million will be earmarked for the employment of non-civil service contract staff by SDO to oversee the project implementation. The total funding requirement of the Bus Project is \$49.9 million.

16. A breakdown of the budget of SPS projects of the Southern District, as well as the breakdown of the estimated project cost and cash flow of the Eye Examination Project and Bus Project are at **Annex to Enclosure 1**.

Implementation Schedule

17. Taking into account the lead time required by HKU for procurement of examination equipment, setting up the examination venue and recruitment and training of secretariat and clinical assistant staff, etc., it is estimated that the Eye Examination Project may commence around six months following funding approval by the Legislative Council.

18. As regards the Bus Project, 12-month lead time would be required by HKSR to procure buses and complete the necessary bus registration procedures with the Transport Department, development of the mobile app and recruitment and training of drivers and bus attendants, etc.. It is thus estimated that the Bus Project may commence around 12 months following funding approval by the Legislative Council.

Public Consultation

19. Two rounds of public consultation have been conducted. The first round of public consultation was conducted from 23 May 2017 to 8 June 2017 to collect views on the proposed projects. Results of the consultation indicated that the majority of the respondents are in favour of the proposed projects. The second round of public consultation on the details of the two projects was conducted for the period from 1 October 2017 to 25 October 2017, including a public consultation session held on 23 October 2017. Invitation

for submissions was issued through post mails, introductory animation, website and posters, etc. The local community generally supported the two proposed SPS projects. The four Area Committees in the Southern District had been consulted and their feedback was very positive.

Home Affairs Bureau

Home Affairs Department

December 2017

**Estimated Cost
of the Signature Projects of the Southern District**

Items	Estimated Cost (\$ million)
A. Provision of Ophthalmic Examination Services (Eye Examination Project)	
Services provided by The University of Hong Kong	49.698
(a) start-up costs (e.g. procurement of equipment and computer system, initial promotional activities, etc.)	(a) 6.369
(b) operating expenses (e.g. staff cost, community promotion, maintenance of equipment, rental, audit fee, etc.)	(b) 43.329
Non-Civil Service Contract Staff	0.416
Total	50.114
B. Provision of Shuttle Bus/Rehabilitation Bus Services (Bus Project)	
Services provided by the Hong Kong Society for Rehabilitation	49.470
(a) start-up costs (e.g. procurement of buses, development of the booking system, etc.)	(a) 9.470
(b) operating expenses (e.g. staff cost, fuel, insurance, repair and maintenance of vehicles and booking system, parking fee, etc.)	(b) 40.000
Non-Civil Service Contract Staff	0.416
Total	49.886
Total Estimated Cost of the Two Signature Project Scheme Projects	100

(I) The Eye Examination Project

(i) Breakdown of the Estimated Project Cost -

Expenditure Item	Estimated Cost (\$ million)
Start-up cost ^(Note1)	6.369
(a) Procurement of essential equipment and computer system	(a) 5.919
(b) Procurement of furniture	(b) 0.050
(c) Initial public promotional activities	(c) 0.400
Employment of staff for delivery of the project	39.063
Maintenance, rental, insurance and administrative expenses	3.466
Community promotion	0.800
50% of the cost of employing one non-civil service contract Executive Assistant by SDO to help oversee project implementation	0.416
Total	50.114

Note 1: About \$6.369 million will be required for HKU as start-up cost for procuring essential equipment and computer system. It is necessary to procure new equipment as rental of equipment is not a feasible option for a service period of five years due to the niche specialty.

(ii) Estimated Cash Flow -

Items	Service Year 1 (\$ million)	Service Year 2 (\$ million)	Service Year 3 (\$ million)	Service Year 4 (\$ million)	Service Year 5 (\$ million)	Total (\$ million)
Fees to HKU	14.081	8.442	8.742	9.054	9.379	49.698
Cost of employing NCSC staff under SDO ^(Note 2)	0.146	0.152	0.118	/	/	0.416
Total	14.227	8.594	8.860	9.054	9.379	50.114

Note 2: It represents 50% of the cost of employing one NCSC Executive Assistant by SDO to help overseeing implementation of the two SPS projects of the Southern District.

(II) The Bus Project

(i) Breakdown of the Estimated Project Cost -

Expenditure Item	Estimated Cost (\$ million)
Start-up cost ^(Note 3)	9.470
(a) Eight new buses	(a) 8.000
(b) Reservation system, GPS global satellite positioning device, mobile app and website design	(b) 1.340
(c) Pick-up and drop-off points set up (without monitor display) and promotion campaign	(c) 0.130
Empolymnt of staff for delivery of the project	23.481
Running costs (e.g. fuel, repair and maintenance of vehicles, licence, etc.)	10.157
Other expenses – (including staff medical, insurance, recruitment, training, and maintenance for IVRS and booking system, etc.)	6.362
50% of the cost of employment of one non-civil service contract Executive Assistant by SDO to help oversee project implementation	0.416
Total cost	49.886

Note 3: About \$9.47 million will be required for HKSR as start-up cost for procuring eight new buses and hardware, and developing software for booking system, etc. It is necessary to procure new buses as the supply of barrier-free buses in Hong Kong is limited and rental is not a feasible option for a service period of five years. Eight buses are required to support the services of six bus routes (five with fixed schedule and frequency and one flexible line providing service on demand). According to HKSR's experience, it is necessary to have two buses as reserve due to the frequent need for repair and maintenance.

(ii) Estimated Cash Flow -

Items	Service Year 0 (\$million)	Service Year 1 (\$million)	Service Year 2 (\$million)	Service Year 3 (\$million)	Service Year 4 (\$million)	Service Year 5 (\$million)	Total (\$million)
Fees to HKSR	9.470 (Start-up cost)	7.394	7.680	7.985	8.304	8.637	49.470
Cost of employing NCSC staff under SDO ^(Note 4)	0.147	0.153	0.116	/	/	/	0.416
Total	9.617	7.547	7.796	7.985	8.304	8.637	49.886

Note 4: It represents 50% of the cost of employing one NCSC Executive Assistant by SDO to help overseeing implementation of the two SPS projects of the Southern District.

Signature Project Scheme (Wan Chai District) – Construction of Moreton Terrace Activities Centre

Proposal and Justifications

At present, the Leighton Hill Community Hall (LHCH) is the only performance venue under the management of the Home Affairs Department (HAD) in Wan Chai District. Given its convenient location, LHCH is highly popular among district organisations and government bureaux or departments for holding local and territory-wide events and activities, such as public consultation exercises, seminars and talks, and leisure and cultural performances. With LHCH being heavily patronised throughout the year, there has been a strong demand from the Wan Chai District Council (WCDC), district organisations and the local community for additional performance and activity venues in the District.

2. With LHCH in Wan Chai South, the Wan Chai Activities Centre¹ in downtown Wan Chai, and the Wan Chai Park Community Garden² in Wan Chai West, Wan Chai East is the only area in the District not provided with similar community facilities. Located at the Moreton Terrace, the proposed Moreton Terrace Activities Centre (MTAC) by WCDC will fill this service gap, with a view to providing a performance and activity venue to serve the Wan Chai residents especially those residing in the vicinity of Victoria Park, Tin Hau and Tai Hang.

3. The MTAC will be a multi-purpose performance and activity venue at the Moreton Terrace with a construction floor area of about 2 225 square metres (m²)³ for organising a wide range of community building and cultural and leisure activities. The proposed facilities in the four-storey MTAC comprise –

- (a) a multi-purpose hall that can house around 250 persons. Equipped with a stage and a stage meeting room, a stage control room, dressing

¹ Under the management of HAD.

² Under the management of the Leisure and Cultural Services Department.

³ The construction floor area is updated from about 2 259 m² to about 2 225 m² due to the optimization of basement design, which is part of project design development. There is no change to the design of the ground floor and upper floors of MTAC.

rooms and a stage store room, the hall will be suitable for holding small-to-medium-scale performances, ceremonies, lectures and workshops, etc.;

- (b) a multi-purpose function room-cum-gallery that can house around 130 persons. Installed with movable partitions and a store room, the room will be ideal for holding small-scale activities such as meetings and artwork display;
- (c) a community garden-cum-roof garden including planting plots under the Community Garden Programme and a garden area for visitors' enjoyment; and
- (d) ancillary facilities such as a management office, toilets and mechanical and electrical plant rooms, etc..

The location and site plan, artist's impression and floor plans of the MTAC are at **Annex to Enclosure 2**.

Financial Implications

4. Under the SPS, a one-off allocation of \$100 million has been earmarked for each of the 18 districts. In addition, the Hong Kong Jockey Club Charities Trust has approved a donation of up to \$40 million for WCDC to pursue the MTAC Project. Therefore, the total amount of funding available for the MTAC Project is \$140 million.

5. The estimated cost for works and related items of the MTAC Project is \$133.1 million in money-of-the-day prices. In addition, a provision of \$6.9 million will be earmarked for implementing the community involvement and publicity activities and employment of non-civil service contract staff under the Architectural Services Department and Wan Chi District Office (WCDO) to oversee the project implementation. Thus, the total funding required for the MTAC Project amounts to \$140 million. Breakdown of the budget is as follows -

Items	Estimated Cost (\$ million)
Works and Related Items	133.1
Community Involvement and Publicity Activities	0.7
Non-Civil Service Contract Staff	6.2
Total	140

6. We estimate the government recurrent expenditure arising from the MTAC Project to be about \$4.9 million per annum.

Implementation

7. Subject to the endorsement of the Public Works Subcommittee and funding approval by the Finance Committee of Legislative Council, we plan to commence the construction works in late 2018 for completion in late 2020.

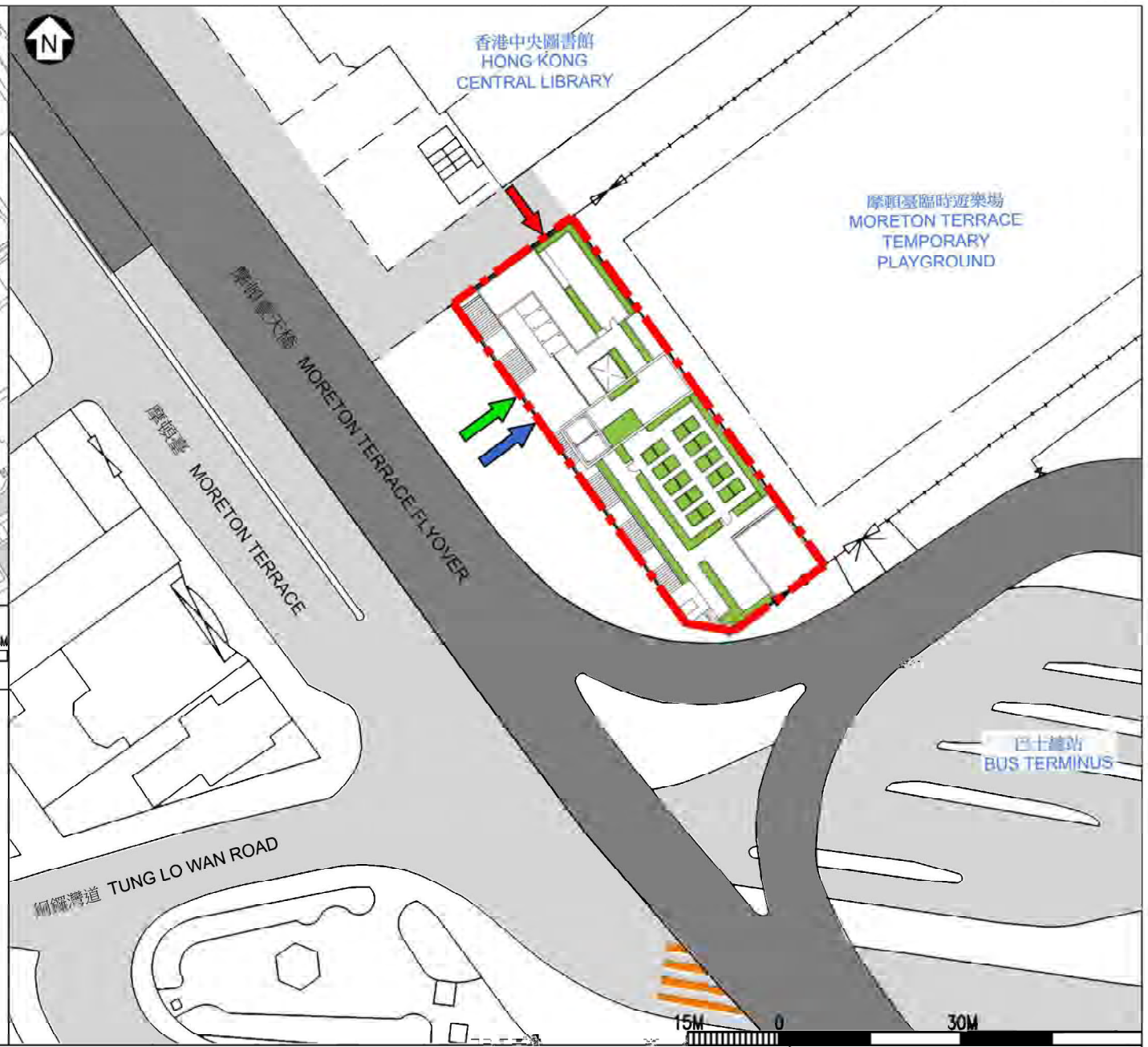
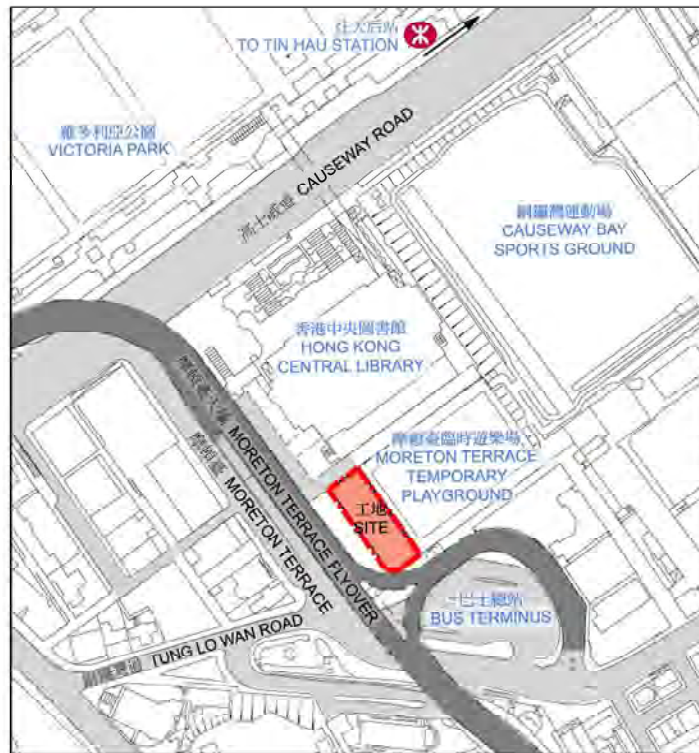
Public Consultation

8. In February 2013, WCDC set up the “Working Group on Signature Projects” (the Working Group) to oversee the scope of works and mode of operation of the SPS project, and to conduct related public consultation exercises. The Working Group proposed to construct a multi-purpose performance and activity venue in the district. In February and March 2013, the Working Group conducted the first consultation exercise comprising a public forum and sessions with the three Area Committees (ACs) of Wan Chai District. Over 90% of the participants at the public forum supported the proposal. The three ACs also gave unanimous support for the project and urged for its early implementation. In March 2013, WCDC endorsed the proposal to construct an additional performance and activity venue under the SPS.

9. In July and August 2014, the Working Group conducted the second consultation exercise after identification of project site and completion of sketch design of the proposed building. To raise public awareness of the MTAC proposal, a wide range of publicity materials, including roadside banners, easy roll banners, wall mount

advertising boards, and posters were displayed across Wan Chai District, while copies of leaflet and brochure were available for public collection at the Public Enquiry Service Centre of WCDO and downloading from the dedicated SPS project webpage of WCDC's website. A public forum was held and the views of the three ACs in the District were also sought. Public comments and suggestions were addressed and presented to the Working Group in September 2014 for consideration, and were taken into account as appropriate when the design of the proposed building was finalised.

Home Affairs Bureau
Home Affairs Department
December 2017



位置圖
LOCATION PLAN

圖例 LEGEND:

- 工地界線
SITE BOUNDARY
- 行人出入口
PEDESTRIAN
ENTRANCE/ EXIT
- 無障礙出入口
BARRIER-FREE
ENTRANCE/ EXIT
- 車輛出入口
VEHICULAR
INGRESS / EGRESS
- 天台綠化範圍
LANDSCAPED AREA AT
ROOF LEVEL
- 行人過路處
PEDESTRIAN
CROSSING

工地平面圖
SITE PLAN

68RE
社區重點項目計劃 (灣仔區) - 興建摩頓臺活動中心
SIGNATURE PROJECT SCHEME (WAN CHAI DISTRICT) -
CONSTRUCTION OF MORETON TERRACE ACTIVITIES CENTRE



ARCHITECTURAL
SERVICES
DEPARTMENT 建築署

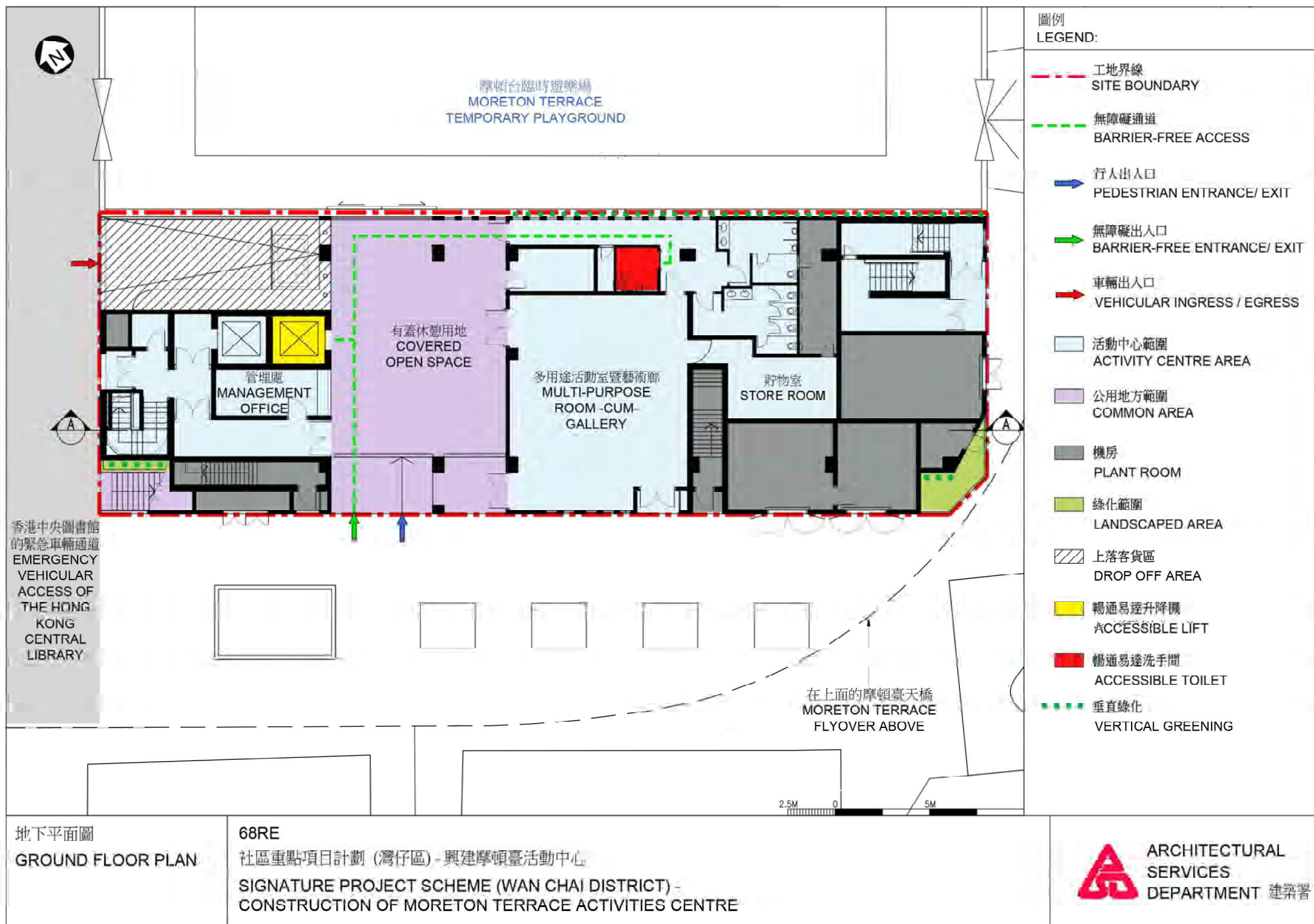


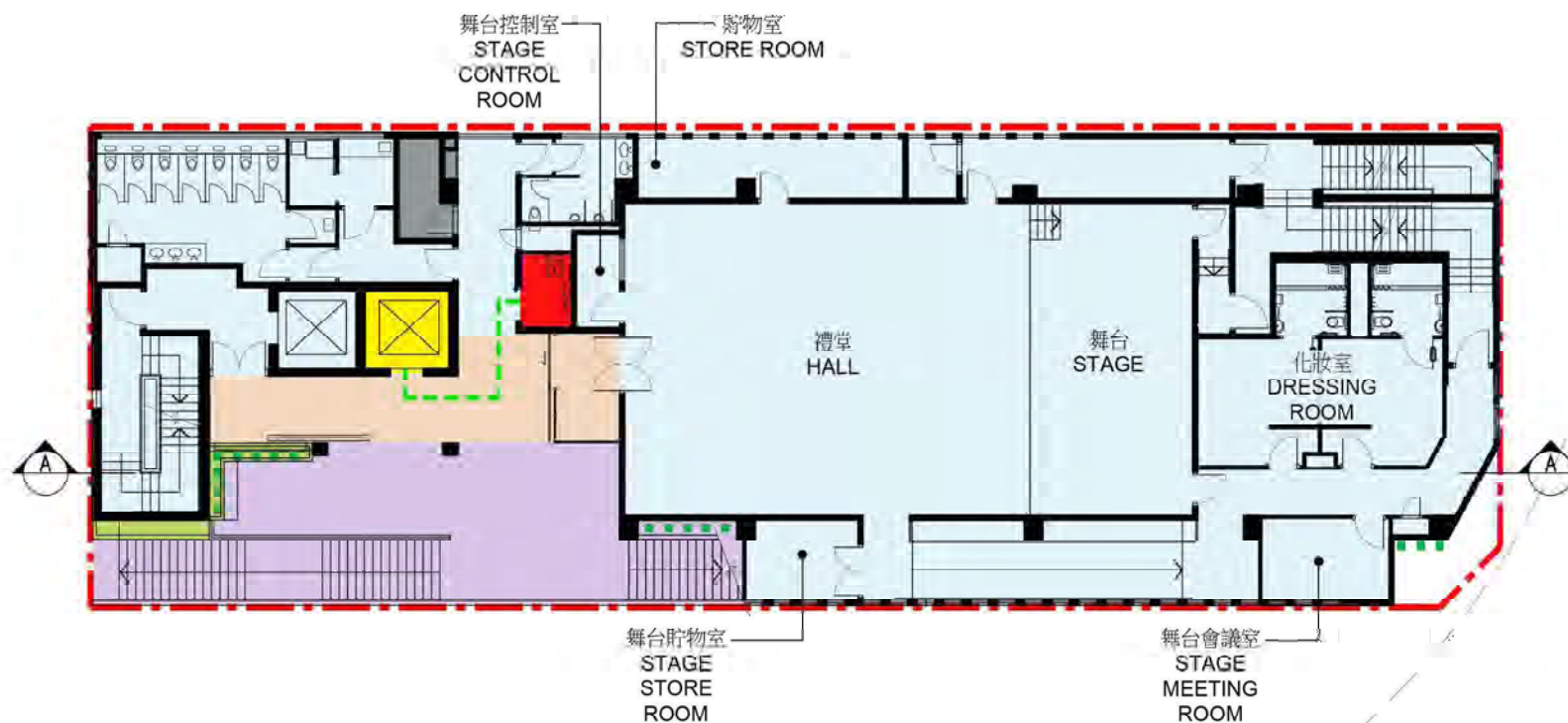
從西面望向大樓的構思透視圖
PERSPECTIVE VIEW
FROM WESTERN
DIRECTION (ARTIST'S
IMPRESSION)

68RE
社區重點項目計劃（灣仔區）- 興建摩頓臺活動中心
SIGNATURE PROJECT SCHEME (WAN CHAI DISTRICT) -
CONSTRUCTION OF MORETON TERRACE ACTIVITIES CENTRE



ARCHITECTURAL
SERVICES
DEPARTMENT 建築署



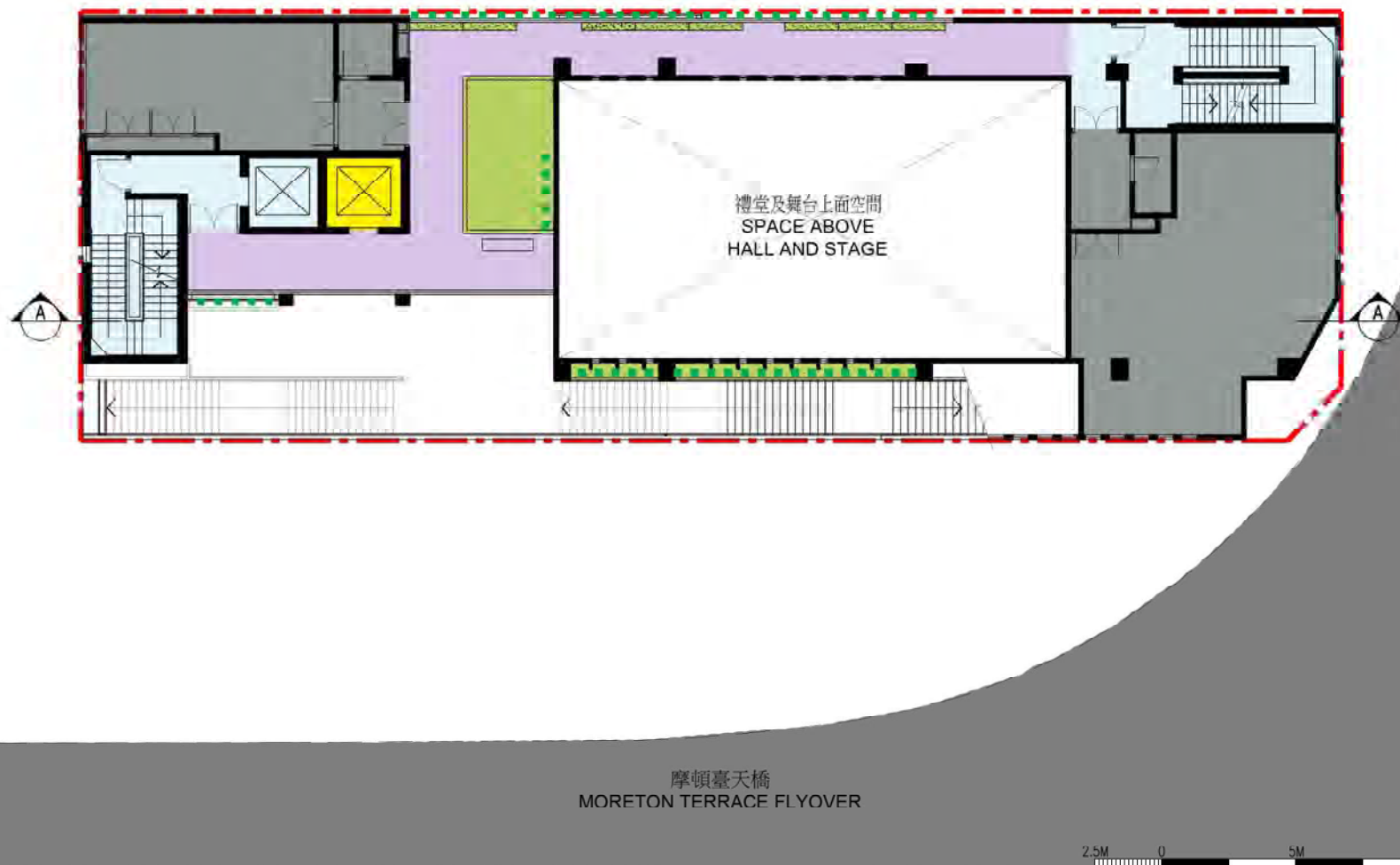


-  工地界線
SITE BOUNDARY
-  無障礙通道
BARRIER-FREE ACCESS
-  活動中心範圍
ACTIVITY CENTRE AREA
-  公用地方範圍
COMMON AREA
-  主入口大堂
MAIN FOYER
-  機房
PLANT ROOM
-  綠化範圍
LANDSCAPED AREA
-  暢通易達升降機
ACCESSIBLE LIFT
-  暢通易達洗手間
ACCESSIBLE TOILET
-  垂直綠化
VERTICAL GREENING

在上面的摩頓臺天橋
MORETON TERRACE
FLYOVER ABOVE

68RE
社區重點項目計劃 (灣仔區) - 興建摩頓臺活動中心
SIGNATURE PROJECT SCHEME (WAN CHAI DISTRICT) -
CONSTRUCTION OF MORETON TERRACE ACTIVITIES CENTRE



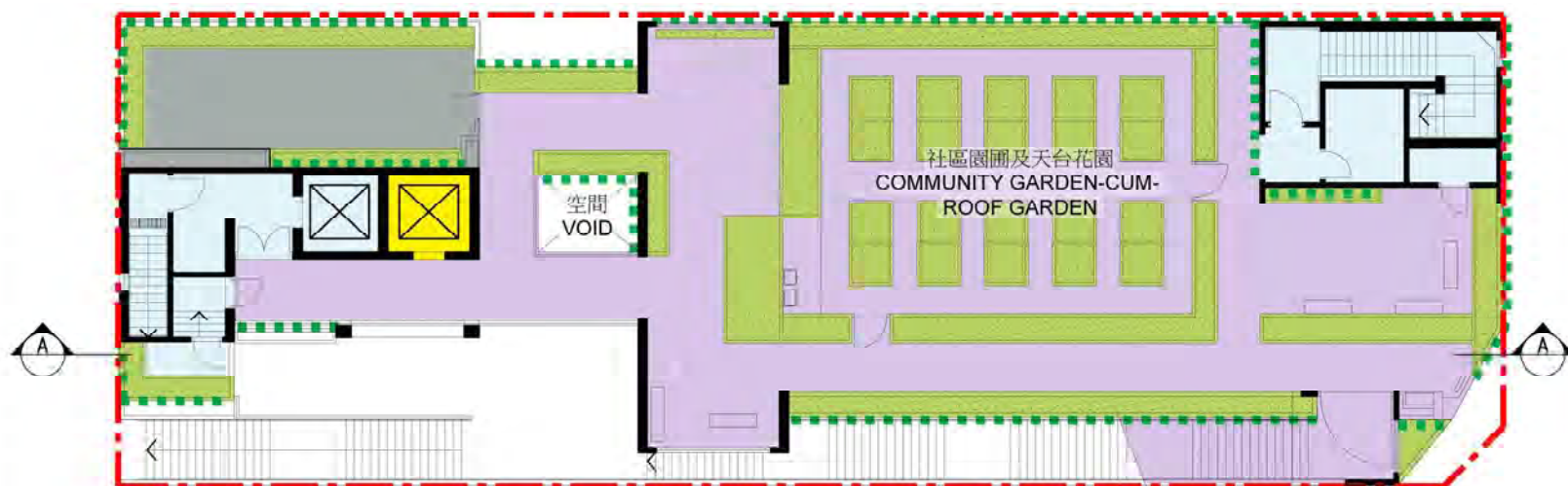


圖例
LEGEND:

- 工地界線
SITE BOUNDARY
- 活動中心範圍
ACTIVITY CENTRE AREA
- 公用地方範圍
COMMON AREA
- 機房
PLANT ROOM
- 綠化範圍
LANDSCAPED AREA
- 暢通易達升降機
ACCESSIBLE LIFT
- 垂直綠化
VERTICAL GREENING

二樓平面圖
SECOND FLOOR PLAN

68RE
社區重點項目計劃 (灣仔區) - 興建摩頓臺活動中心
SIGNATURE PROJECT SCHEME (WAN CHAI DISTRICT) -
CONSTRUCTION OF MORETON TERRACE ACTIVITIES CENTRE



圖例
LEGEND:

-  工地界線
SITE BOUNDARY
-  活動中心範圍
ACTIVITY CENTRE AREA
-  公用地方範圍
COMMON AREA
-  機房
PLANT ROOM
-  綠化範圍
LANDSCAPED AREA
-  暢通易達升降機
ACCESSIBLE LIFT
-  垂直綠化
VERTICAL GREENING

2.5M 0 5M

天台平面圖
ROOF PLAN

68RE
社區重點項目計劃 (灣仔區) - 興建摩頓臺活動中心
SIGNATURE PROJECT SCHEME (WAN CHAI DISTRICT) -
CONSTRUCTION OF MORETON TERRACE ACTIVITIES CENTRE

 ARCHITECTURAL
SERVICES
DEPARTMENT 建築署

**Signature Project Scheme (Kwun Tong District) –
Construction of Music Fountains at Kwun Tong Promenade**

Proposal and Justifications

The Kwun Tong District Council (KTDC) strives to develop the Kwun Tong (KT) Promenade as a landmark of Kowloon East. Since its opening of Phase 1 in January 2010, the KT Promenade has become a popular recreational hot spot with over 100 000 visitors every month. During the day time, young people and the working population nearby like to take a break there by reading books, playing musical instruments or jogging. In the evening, visitors will go there to enjoy the beautiful views of the Victoria Harbour in the night. The characteristic tower landmark, mist feature and seaside boardwalk create a tranquil and romantic atmosphere attracting many photographers.

2. The KT Promenade is also an ideal platform for various community, cultural and recreational activities. The adjacent “Fly the Flyover01” and the recently opened “Fly the Flyover02 and 03” have attracted young performers to mount various performances, exhibitions, and creative arts and cultural events for public enjoyment. These activities have further spurred the vibrancy of the KT Promenade.

3. To further enhance the attractiveness of the KT Promenade, KTDC recommends taking forward the “Construction of Music Fountains at Kwun Tong Promenade” (the Promenade Project) as one of its projects under the Signature Project Scheme (SPS). Through the construction of the music fountains and wet play areas, together with the integration of dynamic lighting, music features and special effects, the Promenade Project aims to create an entertainment attraction to showcase the vibrancy and glamorous night vista of the Victoria Harbour for free public enjoyment. The Promenade Project will also provide a platform for organising interactive water-friendly activities and staging cultural performances, thereby attracting more visitors. A higher visitor flow will help revitalise the local area and provide business and job opportunities to the neighborhood, thereby contributing to the “Energizing Kowloon East” initiative of transforming Kowloon East into a lively business district. The attractiveness of the Kai Tak Cruise Terminal, which is opposite to the Promenade Project, will be enhanced as visitors and passengers thereat can enjoy the performance

from the Terminal.

4. The proposed music fountains will be located at the KT Promenade with a site area of approximately 3 740 square metres. For better amalgamation with the relaxed environment of the KT Promenade, the design concept of the music fountains will emphasize on openness, greenery and urban connectivity by creating a pleasant waterfront environment. The proposed scope of works includes –

- (a) the construction of music fountains with animated lighting and sound effects, interactive fountains with jumping jets and wet play area; and
- (b) the construction of a filtration plant room with the provision of ancillary facilities.

The site plan and artist's impression showing the proposed works of the music fountains are at **Annex to Enclosure 3**.

5. To engage local residents in the development of the Promenade Project, KTDC and Kwun Tong District Office (KTDO) will embark on a series of publicity and community programmes to promote the music fountains and the promenade to the local populace. Apart from the roving exhibitions, groundbreaking and opening ceremony will be mounted to commemorate key milestones of the SPS project development. We will also explore to organise various activities including music, dancing, exhibitions and water sports events to promote the Promenade Project to the local community.

Financial Implication

6. The estimated cost for works and related items of the Promenade Project is \$49.7 million in money-of-the-day prices. In addition, a provision of \$3.8 million will be earmarked for implementing the community involvement and publicity activities and employment of non-civil service contract staff under the Architectural Services Department and KTDO to oversee the project implementation. Thus, the total funding required for the Promenade Project amounts to \$53.5 million¹. Breakdown of the project cost is as follows -

¹ The remaining part of the allocation of \$100 million is being used for another SPS project of the KT District – “Construction of Lift Tower at Shung Yan Street in Kwun Tong” for which funding approval by the Finance Committee (FC) of Legislative Council (LegCo) had been obtained on 13 May 2016.

Items	Estimated Cost (\$ million)
Works and Related Items	49.7
Community Involvement and Publicity Activities	1.0
Non-Civil Service Contract Staff	2.8
Total	53.5

7. We estimate the additional government recurrent expenditure arising from the Promenade Project to be about \$1.8 million per annum.

Implementation

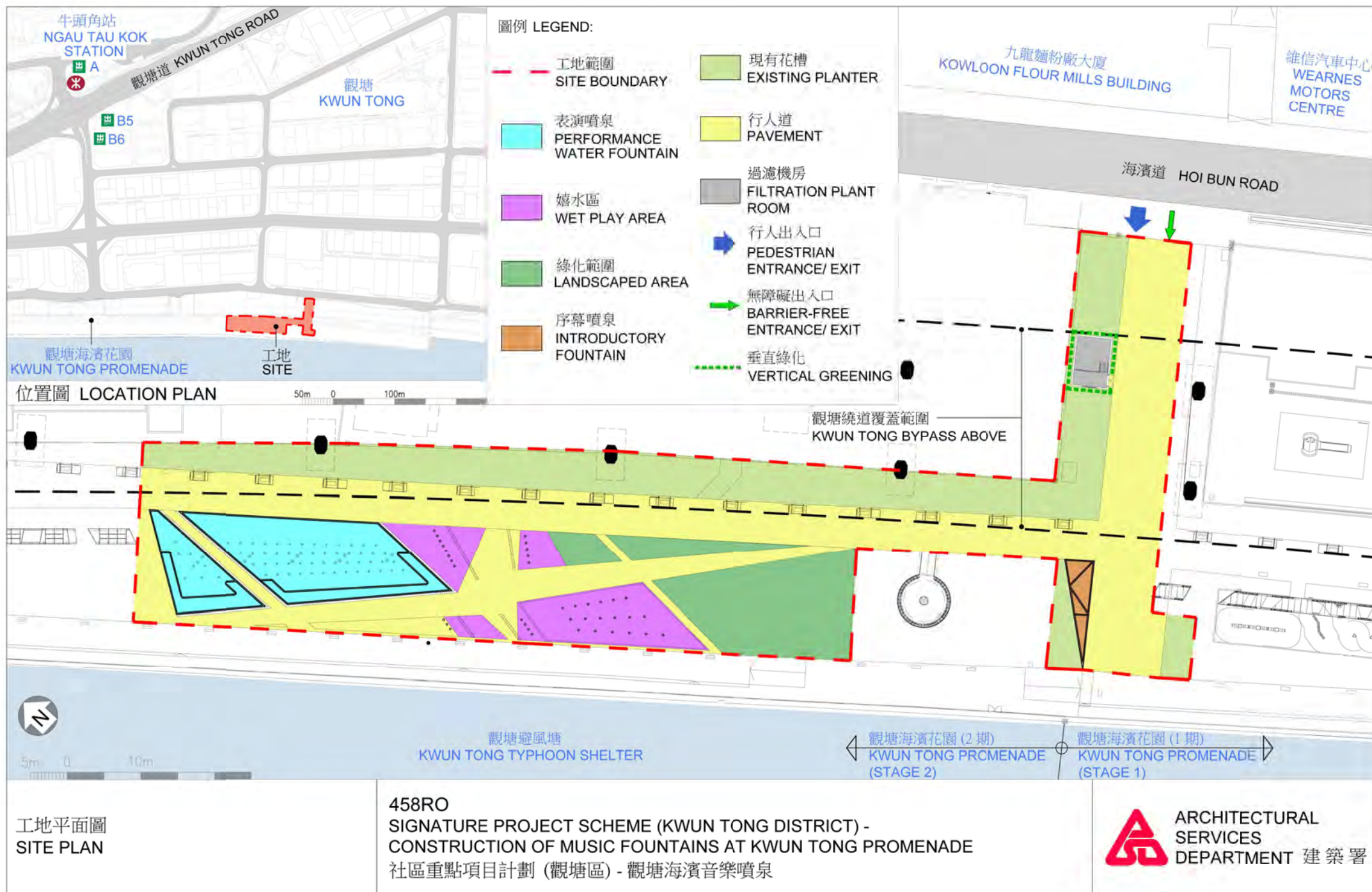
8. Subject to the endorsement of the Public Works Subcommittee and funding approval by FC of LegCo, we plan to commence the construction works in late 2018 for completion in 2020.

Public Consultation

9. KTDC decided to adopt a bottom-up approach to collect public views on the SPS at its meeting held in March 2013. Subsequently, KTDC members proposed various options for the SPS and established a working group to look into these options. An opinion survey was conducted by some KTDC members in which over 85% of the respondents supported the proposal of constructing music fountains at the KT Promenade. The Promenade Project was endorsed by KTDC in November 2013.

10. KTDC and Architectural Services Department also consulted the Task Force on Kai Tak Harbourfront Development of the Harbourfront Commission on the proposed design of the music fountains at KT Promenade in December 2014. Members supported the proposed design.

Home Affairs Bureau
Home Affairs Department
December 2017





從西面望向音樂噴泉的構思圖 (日景)
ARTIST'S IMPRESSION OF THE
MUSIC FOUNTAINS FROM
WESTERN DIRECTION (DAY VIEW)

458RO
SIGNATURE PROJECT SCHEME (KWUN TONG DISTRICT) -
CONSTRUCTION OF MUSIC FOUNTAINS AT KWUN TONG PROMENADE
社區重點項目計劃 (觀塘區) - 觀塘海濱音樂噴泉



ARCHITECTURAL
SERVICES
DEPARTMENT 建築署



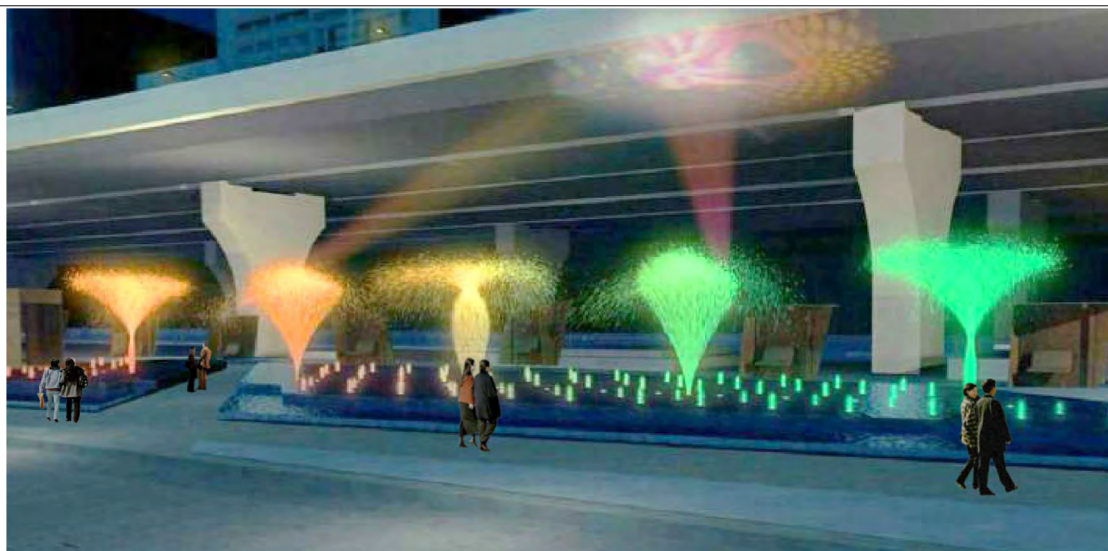
從西面望向音樂噴泉的構思圖 (夜景)
ARTIST'S IMPRESSION OF THE
MUSIC FOUNTAINS FROM
WESTERN DIRECTION (NIGHT VIEW)

458RO
SIGNATURE PROJECT SCHEME (KWUN TONG DISTRICT) -
CONSTRUCTION OF MUSIC FOUNTAINS AT KWUN TONG PROMENADE
社區重點項目計劃 (觀塘區) - 觀塘海濱音樂噴泉

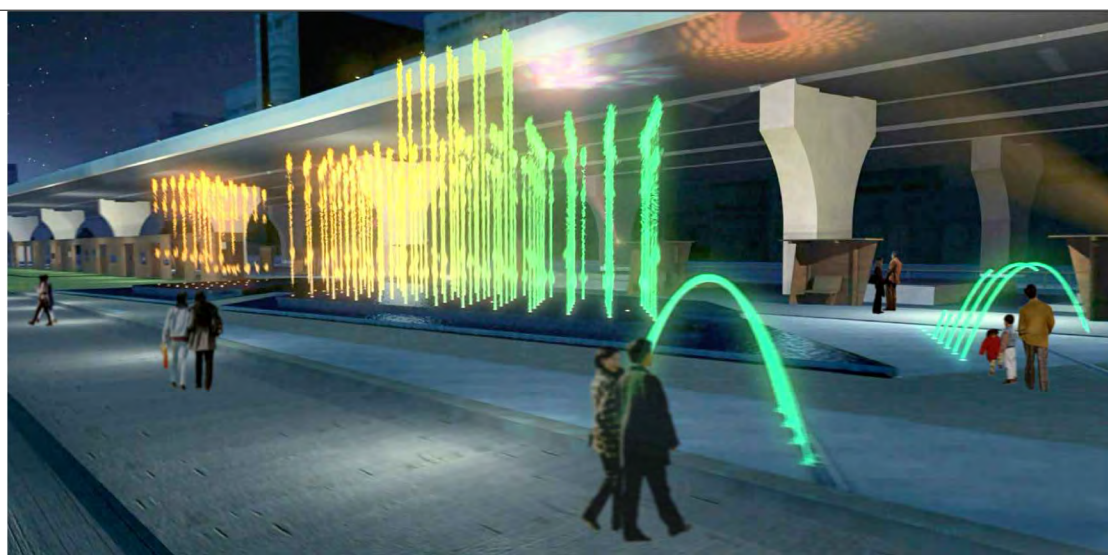
音樂噴泉的垂直噴水表演效果
SHOW EFFECT OF VERTICAL JETS AT THE MUSIC FOUNTAINS



音樂噴泉的旋轉噴水表演效果
SHOW EFFECT OF ROTATING FAN JETS AT THE MUSIC FOUNTAINS



跳射噴泉及音樂噴泉的噴水表演效果
SHOW EFFECT OF JUMPING JETS AND THE MUSIC FOUNTAINS



構思圖 (夜景)
ARTIST'S IMPRESSION (NIGHT VIEW)

458RO
SIGNATURE PROJECT SCHEME (KWUN TONG DISTRICT) -
CONSTRUCTION OF MUSIC FOUNTAINS AT KWUN TONG PROMENADE
社區重點項目計劃 (觀塘區) - 觀塘海濱音樂噴泉