

## LEGISLATIVE COUNCIL BRIEF

Shipping and Port Control Regulations (Cap. 313A) and  
Merchant Shipping (Local Vessels) (General) Regulation (Cap. 548F)

### Legislative Amendments to Regulate Marine Safety

## INTRODUCTION

The Director of Marine (“DM”) has made the Shipping and Port Control Regulations (Amendment of Schedules) Notice 2017, at A **Annex A**, under section 72(1) of the Shipping and Port Control Regulations (Cap. 313A) to establish three new principal fairways in North Lantau and re-align the boundaries of four existing principal fairways in Victoria Harbour.

2. Arising from the re-alignment of fairway boundaries, the Secretary for Transport and Housing has made the Merchant Shipping (Local Vessels) (General) (Amendment) (No.3) Regulation 2017, at B **Annex B**, under section 89 of the Merchant Shipping (Local Vessels) Ordinance (Cap. 548) to give effect to the new speed limits for vessels navigating around the Victoria Harbour.

## JUSTIFICATIONS

3. To enhance navigation safety, the Marine Department (“MD”) establishes principal fairways in busy waters to regulate vessels movements. Vessels navigating within the principal fairways are required to comply with rules mandated by the International Maritime

Organization (“IMO”) to avoid collision<sup>1</sup>, including navigating as close to the right side of the fairway as practicable and following specific procedures when overtaking other vessels. Given the busy marine traffic, fishing activities are prohibited in all principal fairways. At present, there are 10 principal fairways in Hong Kong waters. The boundaries of principal fairways are set out in the Shipping and Port Control Regulations, and are amended from time to time having regard to the latest marine traffic pattern and volume.

4. Due to the development of neighbouring ports in the Pearl River Delta, marine traffic around North Lantau is getting heavier. It is therefore necessary to regulate vessel movements by establishing principal fairways along the waters.

## **LEGISLATIVE PROPOSALS**

### *Establishment of new principal fairway and prohibited fishing area*

5. We propose to establish a stretch of principal fairways, which is divided into three sections with different names for the purpose of clear communication – Urmston Road Fairway, Castle Peak Fairway and Ha Pang Fairway. Their layout is shown in **Annex C**.

6. The eastern end of the Ha Pang Fairway will join with Ma Wan Fairway and Kap Shui Mun Fairway at a junction. Due to strong tidal current, geographical constraint, complicated traffic mix and high traffic volume, it is unsafe to conduct fishing activities in the area. We

---

<sup>1</sup> The set of navigation rules specific to principal fairways is adopted from the International Regulations for Preventing Collisions at Sea 1972.

therefore propose to establish a prohibited fishing area in the aforesaid junction to enhance navigation safety.

### *Other amendments*

#### *Re-alignment of four fairway boundaries in Victoria Harbour*

7. In view of increasing marine traffic and size of vessels, the opportunity is also taken to widen and re-align four existing principal fairways and the adjacent anchorages in the western part of Victoria Harbour. The Northern Fairway, North Green Island Fairway, and Southern Fairway will be widened to accommodate increasing traffic of local, river trade, as well as cruise vessels. As the western boundary of the Central Fairway joins the Northern Fairway and Southern Fairway, consequential amendments will be made to the boundaries of the Central Fairway and the adjacent anchorages (i.e. Western Dangerous Goods Anchorage and Kellett Anchorages). The proposed amendments are at

#### D **Annex D.**

#### *Speed limits*

8. Depending on their lengths and location, vessels navigating within Hong Kong waters are required to observe different speed limits. The speed limits are set out by zone in the Shipping and Port Control Regulations and the Merchant Shipping (Local Vessels) (General) Regulations (Cap. 548F)<sup>2</sup>. Consequential amendments have to be made to the two regulations to align the boundaries of the speed limit zone with the re-aligned fairway boundaries.

---

<sup>2</sup> The Shipping and Port Control Regulations applies to all vessels (except local vessels) in Hong Kong or in the waters of Hong Kong. The Merchant Shipping (Local Vessels) (General) Regulation applies to local vessels.

## **THE REGULATIONS**

### **Shipping and Port Control Regulations (Amendment of Schedules) Notice 2017**

9. The Shipping and Port Control Regulations (Amendment of Schedules) Notice 2017 amends the Shipping and Port Control Regulations to give effect to the new principal fairway, and the re-alignment of the four existing fairways.

### **Merchant Shipping (Local Vessels) (General) (Amendment) (No.3) Regulation 2017**

10. The Merchant Shipping (Local Vessels) (General) (Amendment) (No.3) Regulation 2017 amends the Merchant Shipping (Local Vessels) (General) Regulation to adjust the boundaries of different speed limit zones to align the boundaries with the re-aligned principal fairways.

## **LEGISLATIVE TIMETABLE**

11. The legislative timetable for the Shipping and Port Control Regulations (Amendment of Schedules) Notice 2017 and the Merchant Shipping (Local Vessels) (General) (Amendment) (No.3) Regulation 2017 are as follows –

Publication in the Gazette	20 October 2017
Tabling at the Legislative Council for negative vetting	25 October 2017
Commencement Date	1 February 2018

## **IMPLICATIONS OF THE PROPOSAL**

12. The proposal has no productivity, economic, competition, financial, family, gender, civil service, environmental, or sustainability implications. It is in conformity with the Basic Law, including the provisions concerning human rights. It will not affect the current binding effect of the Shipping and Port Control Ordinance, the Merchant Shipping (Local Vessels) Ordinance and their subsidiary legislation.

## **PUBLIC CONSULTATION**

13. The Port Operations Committee, Local Vessels Advisory Committee, Pilotage Advisory Committee, and the High Speed Craft Consultative Committee were consulted on the above proposal. We also consulted the Legislative Council Panel on Economic Development on 24 April 2017. Most members supported the proposal on the ground of enhanced marine safety and were keen to see early establishment of the principal fairways.

14. While the fishing industry has expressed their reservation towards the establishment of principal fairways and prohibited fishing area due to loss of fishing grounds, it is noted that prohibiting fishing activities in the area is essential in the interest of safety for both the fishing community and marine traffic.

## **PUBLICITY**

15. A press release will be issued on 20 October 2017. A spokesman will be available to answer enquires.

## **ENQUIRIES**

16. Any enquiries on this brief can be addressed to Ms Louisa Yan, Principal Assistant Secretary for Transport and Housing (Transport) (Tel: 3509 8162) or Mr C T Lai, Assistant Director, Port Control, Marine Department (Tel: 2852 4541).

**Transport and Housing Bureau  
October 2017**

**Shipping and Port Control Regulations (Amendment of Schedules) Notice 2017**

**Contents**

Section	Page
1. Commencement.....	1
2. Shipping and Port Control Regulations amended.....	1
3. Third Schedule amended (principal fairways).....	1
4. Fourth Schedule amended (speed of vessels).....	14
5. Seventh Schedule amended (special anchorages).....	20
6. Eleventh Schedule amended.....	24

**Shipping and Port Control Regulations (Amendment of Schedules) Notice 2017**

(Made by the Director of Marine under regulation 72(1) of the Shipping and Port Control Regulations (Cap. 313 sub. leg. A))

**1. Commencement**

This Notice comes into operation on 1 February 2018.

**2. Shipping and Port Control Regulations amended**

The Shipping and Port Control Regulations (Cap. 313 sub. leg. A) are amended as set out in sections 3 to 6.

**3. Third Schedule amended (principal fairways)**

(1) Third Schedule, before item 1—

**Add**

“1A. In this Schedule, the geographical co-ordinates of a position are based on the World Geodetic System 1984 (WGS 84).”.

(2) Third Schedule—

**Repeal item 1(a)(i), (ii), (iii) and (iv)**

**Substitute**

“(i) latitude 22°17.845’ north,

longitude 114°08.425’ east;

(ii) latitude 22°17.617’ north,

longitude 114°07.309’ east;

(iii) latitude 22°17.292’ north,

longitude 114°07.427’ east;

(iv) latitude 22°16.783’ north,

longitude 114°06.575’ east.”.

(3) Third Schedule—

**Repeal item 1(b)(i), (ii) and (iii)****Substitute**

- “(i) latitude 22°17.575’ north,  
longitude 114°08.731’ east;  
(ii) latitude 22°17.408’ north,  
longitude 114°07.914’ east;  
(iii) latitude 22°16.654’ north,  
longitude 114°06.650’ east.”.

- (4) Third Schedule—

**Repeal item 1(c)****Substitute**

- “(c) On the east, a straight line joining the extremities of the northern and southern boundaries.  
(d) On the west, a straight line joining the extremities of the northern and southern boundaries.”.

- (5) Third Schedule, English text, item 2(a), before “straight line”—

**Add**

“a”.

- (6) Third Schedule—

**Repeal item 2(a)(i) and (ii)****Substitute**

- “(i) latitude 22°17.617’ north,  
longitude 114°07.309’ east;  
(ii) latitude 22°17.617’ north,  
longitude 114°06.086’ east.”.

- (7) Third Schedule, English text, item 2(b), before “straight line”—

**Add**

“a”.

- (8) Third Schedule—

**Repeal item 2(b)(i) and (ii)****Substitute**

- “(i) latitude 22°17.292’ north,  
longitude 114°07.427’ east;  
(ii) latitude 22°17.292’ north,  
longitude 114°06.276’ east.”.

- (9) Third Schedule—

**Repeal item 2(c)****Substitute**

- “(c) On the east, a straight line joining the extremities of the northern and southern boundaries.  
(d) On the west, a straight line joining the extremities of the northern and southern boundaries.”.

- (10) Third Schedule—

**Repeal item 3(a)(i), (ii), (iii), (iv) and (v)****Substitute**

- “(i) latitude 22°19.475’ north,  
longitude 114°05.331’ east;  
(ii) latitude 22°19.121’ north,  
longitude 114°05.984’ east;  
(iii) latitude 22°19.500’ north,  
longitude 114°06.646’ east;  
(iv) latitude 22°18.883’ north,  
longitude 114°07.856’ east;  
(v) latitude 22°18.000’ north,  
longitude 114°08.579’ east.”.

- (11) Third Schedule, item 3(a)—



**Repeal the Note.**

- (12) Third Schedule—

**Repeal item 3(b)(i), (ii), (iii), (iv) and (v)****Substitute**

- “(i) latitude 22°17.845’ north,  
longitude 114°08.425’ east;  
(ii) latitude 22°18.722’ north,  
longitude 114°07.707’ east;  
(iii) latitude 22°19.185’ north,  
longitude 114°06.798’ east;  
(iv) latitude 22°18.858’ north,  
longitude 114°06.197’ east;  
(v) latitude 22°18.325’ north,  
longitude 114°05.914’ east.”.

- (13) Third Schedule—

**Repeal item 3(b)(vi) and (vii).**

- (14) Third Schedule, item 3(b)—

**Repeal the Note.**

- (15) Third Schedule—

**Repeal item 3(c)****Substitute**

- “(c) On the east, a straight line joining the extremities of the northern and southern boundaries.  
(d) On the west, a straight line joining the extremities of the northern and southern boundaries.”.

- (16) Third Schedule—

**Repeal item 4(a)(i), (ii), (iii), (iv) and (v)****Substitute**

- “(i) latitude 22°18.000’ north,

- longitude 114°08.579’ east;  
(ii) latitude 22°17.858’ north,  
longitude 114°09.097’ east;  
(iii) latitude 22°17.858’ north,  
longitude 114°09.197’ east;  
(iv) latitude 22°17.626’ north,  
longitude 114°09.413’ east;  
(v) latitude 22°17.476’ north,  
longitude 114°10.067’ east.”.

- (17) Third Schedule, English text, item 4(b)—

**Repeal**

“straight lines”

**Substitute**

“a straight line”.

- (18) Third Schedule—

**Repeal item 4(b)(i) and (ii)****Substitute**

- “(i) latitude 22°17.575’ north,  
longitude 114°08.731’ east;  
(ii) latitude 22°17.274’ north,  
longitude 114°10.036’ east.”.

- (19) Third Schedule—

**Repeal item 4(c) and (d)****Substitute**

- “(c) On the east, a straight line joining the extremities of the northern and southern boundaries.  
(d) On the west, bounded by the southern limit of the Northern Fairway and the eastern limit of the Southern Fairway.”.

(20) Third Schedule—

**Repeal item 5(a)(i), (ii), (iii) and (iv)**

**Substitute**

- “(i) latitude 22°17.476’ north,  
longitude 114°10.067’ east;  
(ii) latitude 22°17.483’ north,  
longitude 114°10.406’ east;  
(iii) latitude 22°17.975’ north,  
longitude 114°11.456’ east;  
(iv) latitude 22°17.975’ north,  
longitude 114°12.447’ east.”.

(21) Third Schedule—

**Repeal item 5(b)(i), (ii), (iii) and (iv)**

**Substitute**

- “(i) latitude 22°17.274’ north,  
longitude 114°10.036’ east;  
(ii) latitude 22°17.283’ north,  
longitude 114°10.464’ east;  
(iii) latitude 22°17.725’ north,  
longitude 114°11.406’ east;  
(iv) latitude 22°17.741’ north,  
longitude 114°12.447’ east.”.

(22) Third Schedule—

**Repeal item 5(c)**

**Substitute**

- “(c) On the east, a straight line joining the extremities of the northern and southern boundaries.  
(d) On the west, a straight line joining the extremities of the northern and southern boundaries.”.

(23) Third Schedule—

**Repeal item 6(a)(i), (ii) and (iii)**

**Substitute**

- “(i) latitude 22°17.975’ north,  
longitude 114°12.447’ east;  
(ii) latitude 22°17.275’ north,  
longitude 114°14.181’ east;  
(iii) latitude 22°17.058’ north,  
longitude 114°14.547’ east.”.

(24) Third Schedule—

**Repeal item 6(b)(i), (ii) and (iii)**

**Substitute**

- “(i) latitude 22°17.741’ north,  
longitude 114°12.447’ east;  
(ii) latitude 22°17.075’ north,  
longitude 114°14.072’ east;  
(iii) latitude 22°16.875’ north,  
longitude 114°14.414’ east.”.

(25) Third Schedule—

**Repeal item 6(c)**

**Substitute**

- “(c) On the east, a straight line joining the extremities of the northern and southern boundaries.  
(d) On the west, a straight line joining the extremities of the northern and southern boundaries.”.

(26) Third Schedule—

**Repeal item 7(a)(i), (ii), (iii) and (iv)**

**Substitute**

- “(i) latitude 22°19.475’ north,  
longitude 114°05.331’ east;

- (ii) latitude 22°21.442' north,  
longitude 114°04.564' east;
- (iii) latitude 22°21.742' north,  
longitude 114°04.214' east;
- (iv) latitude 22°21.742' north,  
longitude 114°03.397' east.”.

(27) Third Schedule—

**Repeal item 7(b)(i), (ii), (iii) and (iv)**

**Substitute**

- “(i) latitude 22°19.675' north,  
longitude 114°04.830' east;
- (ii) latitude 22°21.292' north,  
longitude 114°04.214' east;
- (iii) latitude 22°21.425' north,  
longitude 114°04.080' east;
- (iv) latitude 22°21.425' north,  
longitude 114°03.397' east.”.

(28) Third Schedule—

**Repeal item 7(c)**

**Substitute**

- “(c) On the east, a straight line joining the extremities of the northern and southern boundaries.
- (d) On the west, a straight line joining the extremities of the northern and southern boundaries.”.

(29) Third Schedule—

**Repeal item 8(a)(i), (ii) and (iii)**

**Substitute**

- “(i) latitude 22°19.675' north,  
longitude 114°04.830' east;
- (ii) latitude 22°20.292' north,

- longitude 114°03.680' east;
- (iii) latitude 22°20.892' north,  
longitude 114°03.214' east.”.

(30) Third Schedule—

**Repeal item 8(b)(i), (ii) and (iii)**

**Substitute**

- “(i) latitude 22°19.425' north,  
longitude 114°04.914' east;
- (ii) latitude 22°20.058' north,  
longitude 114°03.714' east;
- (iii) latitude 22°20.825' north,  
longitude 114°03.114' east.”.

(31) Third Schedule—

**Repeal item 8(c)**

**Substitute**

- “(c) On the east, a straight line joining the extremities of the northern and southern boundaries.
- (d) On the west, a straight line joining the extremities of the northern and southern boundaries.”.

(32) Third Schedule—

**Repeal item 9(a)(i), (ii) and (iii)**

**Substitute**

- “(i) latitude 22°16.375' north,  
longitude 114°06.814' east;
- (ii) latitude 22°17.825' north,  
longitude 114°05.964' east;
- (iii) latitude 22°18.325' north,  
longitude 114°05.914' east.”.

(33) Third Schedule, English text, item 9(b), before “straight line”—

**Add**

“a”.

(34) Third Schedule—

**Repeal item 9(b)(i) and (ii)****Substitute**

- “(i) latitude 22°16.142’ north,  
longitude 114°06.280’ east;  
(ii) latitude 22°19.425’ north,  
longitude 114°04.914’ east.”.

(35) Third Schedule, item 9(d)—

**Repeal**

“straight line adjoining the extremities of the east and west”

**Substitute**

“a straight line joining the extremities of the eastern and western”.

(36) Third Schedule—

**Repeal item 10(a)(i), (ii), (iii) and (iv)****Substitute**

- “(i) latitude 22°19.625’ north,  
longitude 114°08.697’ east;  
(ii) latitude 22°19.458’ north,  
longitude 114°08.964’ east;  
(iii) latitude 22°19.075’ north,  
longitude 114°09.197’ east;  
(iv) latitude 22°17.858’ north,  
longitude 114°09.197’ east.”.

(37) Third Schedule—

**Repeal item 10(b)(i), (ii), (iii) and (iv)****Substitute**

- “(i) latitude 22°19.542’ north,  
longitude 114°08.647’ east;  
(ii) latitude 22°19.408’ north,  
longitude 114°08.897’ east;  
(iii) latitude 22°19.075’ north,  
longitude 114°09.097’ east;  
(iv) latitude 22°17.858’ north,  
longitude 114°09.097’ east.”.

(38) Third Schedule—

**Repeal item 10(c)****Substitute**

- “(c) On the north, a straight line joining the extremities of the eastern and western boundaries.  
(d) On the south, a straight line joining the extremities of the eastern and western boundaries.”.

(39) Third Schedule, after item 10—

**Add**

“11. Boundaries of the Urmston Road Fairway

- (a) On the east, straight lines joining the following positions—  
(i) latitude 22°21.317’ north,  
longitude 113°56.117’ east;  
(ii) latitude 22°22.267’ north,  
longitude 113°54.483’ east;  
(iii) latitude 22°23.067’ north,  
longitude 113°53.967’ east;  
(iv) latitude 22°24.981’ north,  
longitude 113°53.489’ east.  
(b) On the west, straight lines joining the following positions—  
(i) latitude 22°21.033’ north,

- longitude 113°55.933' east;
  - (ii) latitude 22°22.033' north,  
longitude 113°54.233' east;
  - (iii) latitude 22°22.933' north,  
longitude 113°53.650' east;
  - (iv) latitude 22°23.709' north,  
longitude 113°53.447' east;
  - (v) latitude 22°24.909' north,  
longitude 113°53.147' east.
- (c) On the north, a straight line joining the extremities of the eastern and western boundaries.
- (d) On the south, a straight line joining the extremities of the eastern and western boundaries.

## 12. Boundaries of the Castle Peak Fairway

- (a) On the north, straight lines joining the following positions—
- (i) latitude 22°20.883' north,  
longitude 114°01.333' east;
  - (ii) latitude 22°20.892' north,  
longitude 113°59.018' east;
  - (iii) latitude 22°20.820' north,  
longitude 113°57.685' east;
  - (iv) latitude 22°20.908' north,  
longitude 113°57.147' east;
  - (v) latitude 22°21.317' north,  
longitude 113°56.117' east.
- (b) On the south, straight lines joining the following positions—
- (i) latitude 22°20.567' north,  
longitude 114°01.417' east;
  - (ii) latitude 22°20.667' north,  
longitude 113°59.150' east;

- (iii) latitude 22°20.667' north,  
longitude 113°58.683' east;
- (iv) latitude 22°20.592' north,  
longitude 113°57.507' east;
- (v) latitude 22°20.783' north,  
longitude 113°56.583' east;
- (vi) latitude 22°21.033' north,  
longitude 113°55.933' east.

- (c) On the east, a straight line joining the extremities of the northern and southern boundaries.
- (d) On the west, a straight line joining the extremities of the northern and southern boundaries.

## 13. Boundaries of the Ha Pang Fairway

- (a) On the north, a straight line joining the following positions—
- (i) latitude 22°21.233' north,  
longitude 114°02.233' east;
  - (ii) latitude 22°20.883' north,  
longitude 114°01.333' east.
- (b) On the south, a straight line joining the following positions—
- (i) latitude 22°20.933' north,  
longitude 114°02.367' east;
  - (ii) latitude 22°20.567' north,  
longitude 114°01.417' east.
- (c) On the east, a straight line joining the extremities of the northern and southern boundaries.
- (d) On the west, a straight line joining the extremities of the northern and southern boundaries.”

**4. Fourth Schedule amended (speed of vessels)**

- (1) Fourth Schedule, before paragraph 1—

**Add**

“1A. In this Schedule, the geographical co-ordinates of a position are based on the World Geodetic System 1984 (WGS 84).”.

- (2) Fourth Schedule, paragraph 2(a)(i)—

**Repeal**

“22°15'50.4" north”

**Substitute**

“22°15.748' north”.

- (3) Fourth Schedule, paragraph 2(a)(i)—

**Repeal**

“114°16'27.6" east”

**Substitute**

“114°16.607' east”.

- (4) Fourth Schedule, paragraph 2(a)(i)—

**Repeal**

“22°15'46.4" north”

**Substitute**

“22°15.681' north”.

- (5) Fourth Schedule, paragraph 2(a)(i)—

**Repeal**

“114°15'17.9" east”

**Substitute**

“114°15.446' east”.

- (6) Fourth Schedule, paragraph 2(a)(ii)—

**Repeal**

“22°17'55.6" north”

**Substitute**

“22°17.835' north”.

- (7) Fourth Schedule, paragraph 2(a)(ii)—

**Repeal**

“114°10'47.2" east”

**Substitute**

“114°10.934' east”.

- (8) Fourth Schedule, paragraph 2(a)(ii)—

**Repeal**

“22°17'22.5" north”

**Substitute**

“22°17.283' north”.

- (9) Fourth Schedule, paragraph 2(a)(ii)—

**Repeal**

“114°11'06" east”

**Substitute**

“114°11.247' east”.

- (10) Fourth Schedule, Chinese text, paragraph 2(a)(iii)—

**Repeal**

“界線的兩端”

**Substitute**

“兩條界線末端”.

- (11) Fourth Schedule, Chinese text, paragraph 2(a)(iv)—

**Repeal**

“界線的兩端”

**Substitute**

“兩條界線末端”。

- (12) Fourth Schedule, paragraph 2(b)(i)—

**Repeal**

“22°17'55.6" north”

**Substitute**

“22°17.835' north”。

- (13) Fourth Schedule, paragraph 2(b)(i)—

**Repeal**

“114°10'47.2" east”

**Substitute**

“114°10.934' east”。

- (14) Fourth Schedule, paragraph 2(b)(i)—

**Repeal**

“22°17'22.5" north”

**Substitute**

“22°17.283' north”。

- (15) Fourth Schedule, paragraph 2(b)(i)—

**Repeal**

“114°11'06" east”

**Substitute**

“114°11.247' east”。

- (16) Fourth Schedule—

**Repeal paragraph 2(b)(ii)(A), (B), (C), (D), (E), (F) and (G)**

**Substitute**

“(A) latitude 22°16.467' north,  
longitude 114°07.004' east;

(B) latitude 22°16.375' north,  
longitude 114°06.814' east;

(C) latitude 22°17.825' north,  
longitude 114°05.964' east;

(D) latitude 22°18.325' north,  
longitude 114°05.914' east;

(E) latitude 22°18.858' north,  
longitude 114°06.197' east;

(F) latitude 22°19.185' north,  
longitude 114°06.798' east;

(G) latitude 22°19.432' north,  
longitude 114°07.357' east.”。

- (17) Fourth Schedule, Chinese text, paragraph 2(b)(iii)—

**Repeal**

“界線的兩端”

**Substitute**

“兩條界線末端”。

- (18) Fourth Schedule, Chinese text, paragraph 2(b)(iv)—

**Repeal**

“界線的兩端”

**Substitute**

“兩條界線末端”。

- (19) Fourth Schedule—

**Repeal paragraph 2(c)(i)**

**Substitute**

“(i) on the east, by—

- (A) the western coastline of Hong Kong Island from the position at latitude 22°15.251' north, longitude 114°07.921' east to the position at latitude 22°16.467' north, longitude 114°07.004' east; and
- (B) straight lines joining the following positions—
- (I) latitude 22°16.467' north,  
longitude 114°07.004' east;
  - (II) latitude 22°16.375' north,  
longitude 114°06.814' east;
  - (III) latitude 22°17.825' north,  
longitude 114°05.964' east;
  - (IV) latitude 22°18.325' north,  
longitude 114°05.914' east;
  - (V) latitude 22°18.858' north,  
longitude 114°06.197' east;
  - (VI) latitude 22°19.185' north,  
longitude 114°06.798' east;
  - (VII) latitude 22°19.432' north,  
longitude 114°07.357' east;”.

(20) Fourth Schedule—

**Repeal paragraph 2(c)(ii)**

**Substitute**

“(ii) on the west, by—

- (A) straight lines joining the following positions—
- (I) latitude 22°14.075' north,  
longitude 114°04.730' east;
  - (II) latitude 22°15.775' north,  
longitude 114°03.385' east;
  - (III) latitude 22°17.022' north,  
longitude 114°02.939' east;
  - (IV) latitude 22°17.457' north,  
longitude 114°02.732' east;

- (V) latitude 22°18.354' north,  
longitude 114°02.329' east;
- (B) the north-eastern coastline of Lantau Island from the position at latitude 22°18.354' north, longitude 114°02.329' east to the position at latitude 22°20.757' north, longitude 114°03.007' east;
- (C) a straight line joining the following positions—
  - (I) latitude 22°20.757' north,  
longitude 114°03.007' east;
  - (II) latitude 22°20.920' north,  
longitude 114°03.249' east;
- (D) the western coastline of Ma Wan from the position at latitude 22°20.920' north, longitude 114°03.249' east to the position at latitude 22°21.313' north, longitude 114°03.397' east; and
- (E) a straight line joining the following positions—
  - (I) latitude 22°21.313' north,  
longitude 114°03.397' east;
  - (II) latitude 22°21.908' north,  
longitude 114°03.396' east;”.

(21) Fourth Schedule—

**Repeal paragraph 2(c)(iii)**

**Substitute**

“(iii) on the south, by straight lines joining the following positions—

- (A) latitude 22°15.251' north,  
longitude 114°07.921' east;
- (B) latitude 22°14.075' north,  
longitude 114°06.380' east;
- (C) latitude 22°14.075' north,



longitude 114°04.730' east.”.

- (22) Fourth Schedule, Chinese text, paragraph 2(c)(iv)—

**Repeal**

“界線的兩端”

**Substitute**

“兩條界線末端”.

- (23) Fourth Schedule—

**Repeal paragraph 2(d)(ii)(A), (B), (C), (D) and (E)**

**Substitute**

- “(A) latitude 22°15.008' north,  
longitude 114°07.577' east;  
(B) latitude 22°14.638' north,  
longitude 114°07.117' east;  
(C) latitude 22°16.142' north,  
longitude 114°06.280' east;  
(D) latitude 22°16.375' north,  
longitude 114°06.814' east;  
(E) latitude 22°15.008' north,  
longitude 114°07.577' east.”.

**5. Seventh Schedule amended (special anchorages)**

- (1) Seventh Schedule, item 1(a)—

**Repeal the Note**

**Substitute**

“Note: In item 1(a), the geographical co-ordinates of a position are based on the World Geodetic System 1984 (WGS 84).”.

- (2) Seventh Schedule, item 1(b)—

**Repeal the Note**

**Substitute**

“Note: In item 1(b), the geographical co-ordinates of a position are based on the World Geodetic System 1984 (WGS 84).”.

- (3) Seventh Schedule—

**Repeal item 2(c)(i), (ii), (iii), (iv) and (v)**

**Substitute**

- “(i) latitude 22°18.409' north,  
longitude 114°06.515' east;  
(ii) latitude 22°19.000' north,  
longitude 114°06.459' east;  
(iii) latitude 22°19.185' north,  
longitude 114°06.798' east;  
(iv) latitude 22°18.900' north,  
longitude 114°07.356' east;  
(v) latitude 22°18.383' north,  
longitude 114°06.867' east.”.

- (4) Seventh Schedule—

**Repeal item 2(c)(vi).**

- (5) Seventh Schedule, item 2(c)—

**Repeal the Note**

**Substitute**

“Note: In item 2(c), the geographical co-ordinates of a position are based on the World Geodetic System 1984 (WGS 84).”.

- (6) Seventh Schedule—

**Repeal item 3(i)(i), (ii), (iii) and (iv)**

**Substitute**

- “(i) latitude 22°17.825' north,

- longitude 114°05.964' east;  
(ii) latitude 22°17.617' north,  
longitude 114°06.086' east;  
(iii) latitude 22°17.617' north,  
longitude 114°06.590' east;  
(iv) latitude 22°17.901' north,  
longitude 114°06.478' east;  
(v) latitude 22°18.339' north,  
longitude 114°06.449' east.”.
- (7) Seventh Schedule, item 3(i)—  
**Repeal the Note**  
**Substitute**  
“Note: In item 3(i), the geographical co-ordinates of a position are based on the World Geodetic System 1984 (WGS 84).”.
- (8) Seventh Schedule—  
**Repeal item 3(j)(i), (ii), (iii), (iv), (v) and (vi)**  
**Substitute**  
“(i) latitude 22°18.383' north,  
longitude 114°06.867' east;  
(ii) latitude 22°18.708' north,  
longitude 114°07.174' east;  
(iii) latitude 22°18.512' north,  
longitude 114°07.549' east;  
(iv) latitude 22°17.789' north,  
longitude 114°08.147' east;  
(v) latitude 22°17.617' north,  
longitude 114°07.309' east;  
(vi) latitude 22°17.617' north,  
longitude 114°07.024' east;  
(vii) latitude 22°17.983' north,

- longitude 114°07.024' east.”.
- (9) Seventh Schedule, item 3(j)—  
**Repeal the Note**  
**Substitute**  
“Note: In item 3(j), the geographical co-ordinates of a position are based on the World Geodetic System 1984 (WGS 84).”.
- (10) Seventh Schedule—  
**Repeal item 3(k)(i), (ii), (iii) and (iv)**  
**Substitute**  
“(i) latitude 22°18.708' north,  
longitude 114°07.174' east;  
(ii) latitude 22°18.900' north,  
longitude 114°07.356' east;  
(iii) latitude 22°18.722' north,  
longitude 114°07.707' east;  
(iv) latitude 22°17.845' north,  
longitude 114°08.425' east;  
(v) latitude 22°17.789' north,  
longitude 114°08.147' east;  
(vi) latitude 22°18.512' north,  
longitude 114°07.549' east.”.
- (11) Seventh Schedule, item 3(k)—  
**Repeal the Note**  
**Substitute**  
“Note: In item 3(k), the geographical co-ordinates of a position are based on the World Geodetic System 1984 (WGS 84).”.
- (12) Seventh Schedule, item 3(l)—  
**Repeal the Note**

**Substitute**

“Note: In item 3(l), the geographical co-ordinates of a position are based on the World Geodetic System 1984 (WGS 84).”.

(13) Seventh Schedule, item 3(m)—

**Repeal the Note****Substitute**

“Note: In item 3(m), the geographical co-ordinates of a position are based on the World Geodetic System 1984 (WGS 84).”.

**6. Eleventh Schedule amended**

Eleventh Schedule, Part I—


**Add**

“5. The area joining the Ma Wan Fairway, the Kap Shui Mun Fairway and the Ha Pang Fairway that is bounded by straight lines joining the following positions—

- (a) latitude 22°21.742' north,  
longitude 114°03.397' east;
- (b) latitude 22°21.425' north,  
longitude 114°03.397' east;
- (c) latitude 22°20.892' north,  
longitude 114°03.214' east;
- (d) latitude 22°20.825' north,  
longitude 114°03.114' east;
- (e) latitude 22°20.933' north,  
longitude 114°02.367' east;
- (f) latitude 22°21.233' north,  
longitude 114°02.233' east.

Note: In item 5, the geographical co-ordinates of a position are based on the World Geodetic System 1984 (WGS

84).”.



Director of Marine

13 Oct 2017

### Explanatory Note

This Notice amends the Third Schedule to the Shipping and Port Control Regulations (Cap. 313 sub. leg. A) (*principal Regulations*) to—

- (a) realign the boundaries of 4 existing principal fairways in the western part of Victoria Harbour (namely the Southern Fairway, the North Green Island Fairway, the Northern Fairway and the Central Fairway); and
  - (b) provide for the boundaries of 3 new principal fairways on the north side of Lantau Island (namely the Urmston Road Fairway, the Castle Peak Fairway and the Ha Pang Fairway).
2. Due to the realignment of the boundaries of the principal fairways mentioned above, this Notice also—
  - (a) amends the Fourth Schedule to the principal Regulations to make corresponding adjustments to the boundaries of the areas of the waters in which a vessel may only proceed within speed limits; and
  - (b) amends the Seventh Schedule to the principal Regulations to make corresponding adjustments to the boundaries of the adjacent anchorages.
3. In addition, this Notice amends the Eleventh Schedule to the principal Regulations to provide for the boundaries of a new prohibited fishing area that joins the Ma Wan Fairway, the Kap Shui Mun Fairway and the Ha Pang Fairway.
4. This Notice also makes technical textual amendments, including amendments adopting co-ordinates based on the World Geodetic System 1984 (WGS 84) to describe the boundaries of certain principal fairways, speed control areas and anchorages in the Third, Fourth and Seventh Schedules to the principal Regulations.

## Merchant Shipping (Local Vessels) (General) (Amendment) (No. 3) Regulation 2017

(Made by the Secretary for Transport and Housing under section 89 of the Merchant Shipping (Local Vessels) Ordinance (Cap. 548))

### 1. Commencement

This Regulation comes into operation on 1 February 2018.

### 2. Merchant Shipping (Local Vessels) (General) Regulation amended

The Merchant Shipping (Local Vessels) (General) Regulation (Cap. 548 sub. leg. F) is amended as set out in section 3.

### 3. Schedule 2 amended (speed of local vessels)

(1) Schedule 2—

#### Repeal item 1

#### Substitute

“1. In this Schedule, the geographical co-ordinates of a position are based on the World Geodetic System 1984 (WGS 84).”.

(2) Schedule 2, Chinese text, item 2(a)(iii)—

#### Repeal

“界線的兩端”

#### Substitute

“兩條界線末端”.

(3) Schedule 2, Chinese text, item 2(a)(iv)—

#### Repeal

“界線的兩端”

#### Substitute

“兩條界線末端”.

(4) Schedule 2—

#### Repeal item 2(b)(ii)(B)

#### Substitute

“(B) latitude 22°16.375’ north, longitude 114°06.814’ east;”.

(5) Schedule 2—

#### Repeal item 2(b)(ii)(E) and (F)

#### Substitute

“(E) latitude 22°18.858’ north, longitude 114°06.197’ east;

(F) latitude 22°19.185’ north, longitude 114°06.798’ east;”.

(6) Schedule 2, Chinese text, item 2(b)(iii)—

#### Repeal

“界線的兩端”

#### Substitute

“兩條界線末端”.

(7) Schedule 2, Chinese text, item 2(b)(iv)—

#### Repeal

“界線的兩端”

#### Substitute

“兩條界線末端”.

(8) Schedule 2—

#### Repeal item 2(c)(i) and (ii)

#### Substitute

- “(i) on the east—
- (A) by the western coastline of Hong Kong Island from the position at latitude 22°15.251′ north, longitude 114°07.921′ east to the position at latitude 22°16.467′ north, longitude 114°07.004′ east; and
- (B) by straight lines joining the following positions—
- (I) latitude 22°16.467′ north, longitude 114°07.004′ east;
- (II) latitude 22°16.375′ north, longitude 114°06.814′ east;
- (III) latitude 22°17.825′ north, longitude 114°05.964′ east;
- (IV) latitude 22°18.325′ north, longitude 114°05.914′ east;
- (V) latitude 22°18.858′ north, longitude 114°06.197′ east;
- (VI) latitude 22°19.185′ north, longitude 114°06.798′ east;
- (VII) latitude 22°19.432′ north, longitude 114°07.357′ east;
- (ii) on the west—
- (A) by straight lines joining the following positions—
- (I) latitude 22°14.075′ north, longitude 114°04.730′ east;
- (II) latitude 22°15.775′ north, longitude 114°03.385′ east;

- (III) latitude 22°17.022′ north, longitude 114°02.939′ east;
- (IV) latitude 22°17.457′ north, longitude 114°02.732′ east;
- (V) latitude 22°18.354′ north, longitude 114°02.329′ east;
- (B) by the north-eastern coastline of Lantau Island from the position at latitude 22°18.354′ north, longitude 114°02.329′ east to the position at latitude 22°20.757′ north, longitude 114°03.007′ east;
- (C) by a straight line joining the following positions—
- (I) latitude 22°20.757′ north, longitude 114°03.007′ east;
- (II) latitude 22°20.920′ north, longitude 114°03.249′ east;
- (D) by the western coastline of Ma Wan from the position at latitude 22°20.920′ north, longitude 114°03.249′ east to the position at latitude 22°21.313′ north, longitude 114°03.397′ east; and
- (E) by a straight line joining the following positions—
- (I) latitude 22°21.313′ north, longitude 114°03.397′ east;
- (II) latitude 22°21.908′ north, longitude 114°03.396′ east;”.
- (9) Schedule 2, Chinese text, item 2(c)(iv)—

**Repeal**

“界線的兩端”

**Substitute**

“兩條界線末端”.

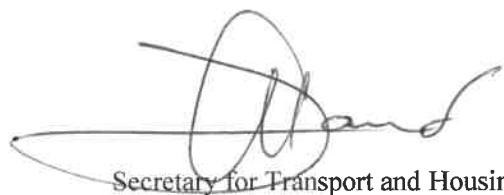
(10) Schedule 2—

**Repeal item 2(d)(ii)(C) and (D)**

**Substitute**

“(C) latitude 22°16.142’ north, longitude 114°06.280’ east;

(D) latitude 22°16.375’ north, longitude 114°06.814’ east;”.



Secretary for Transport and Housing

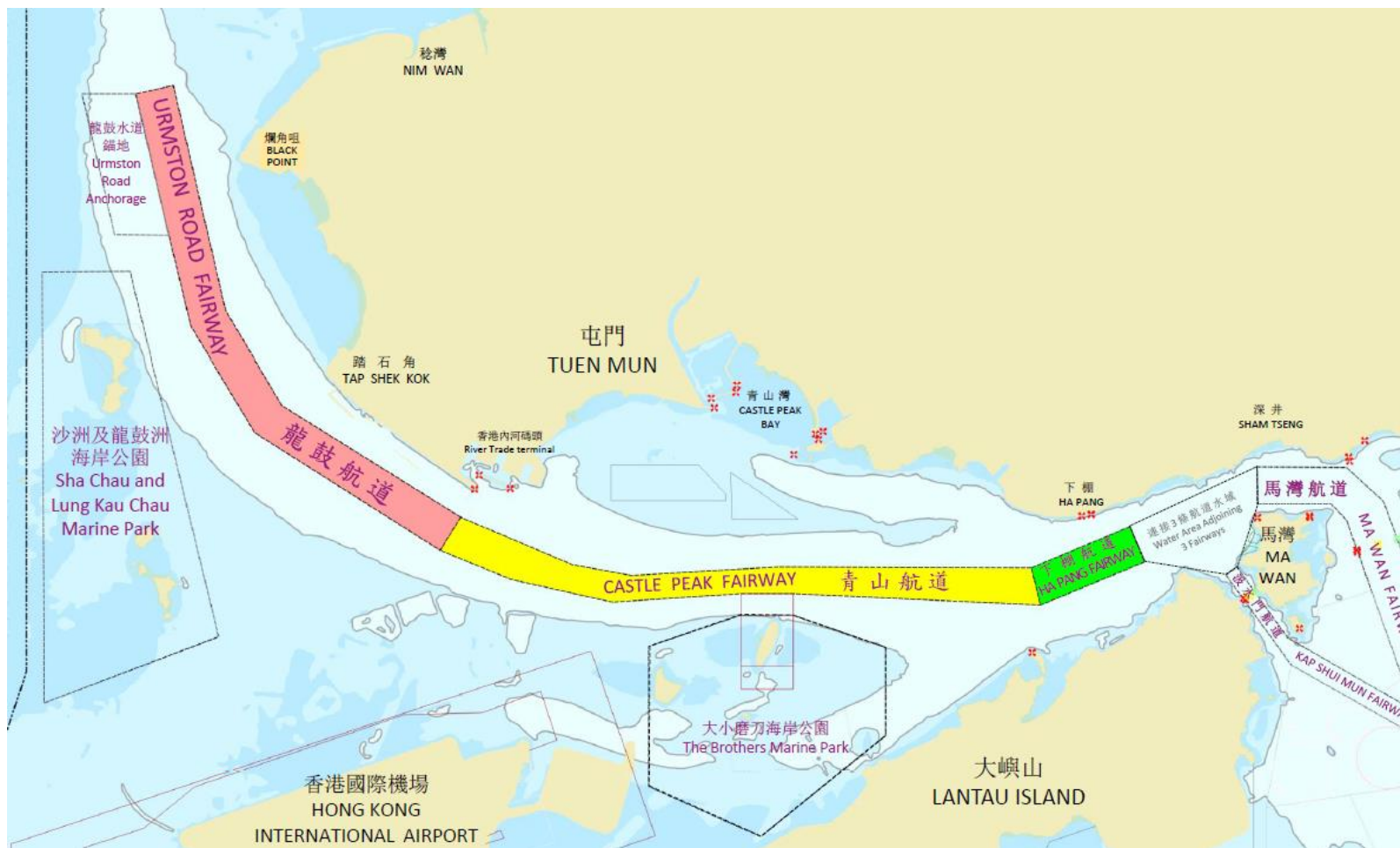
13 Oct 2017

**Explanatory Note**

This Regulation amends Schedule 2 to the Merchant Shipping (Local Vessels) (General) Regulation (Cap. 548 sub. leg. F) to—

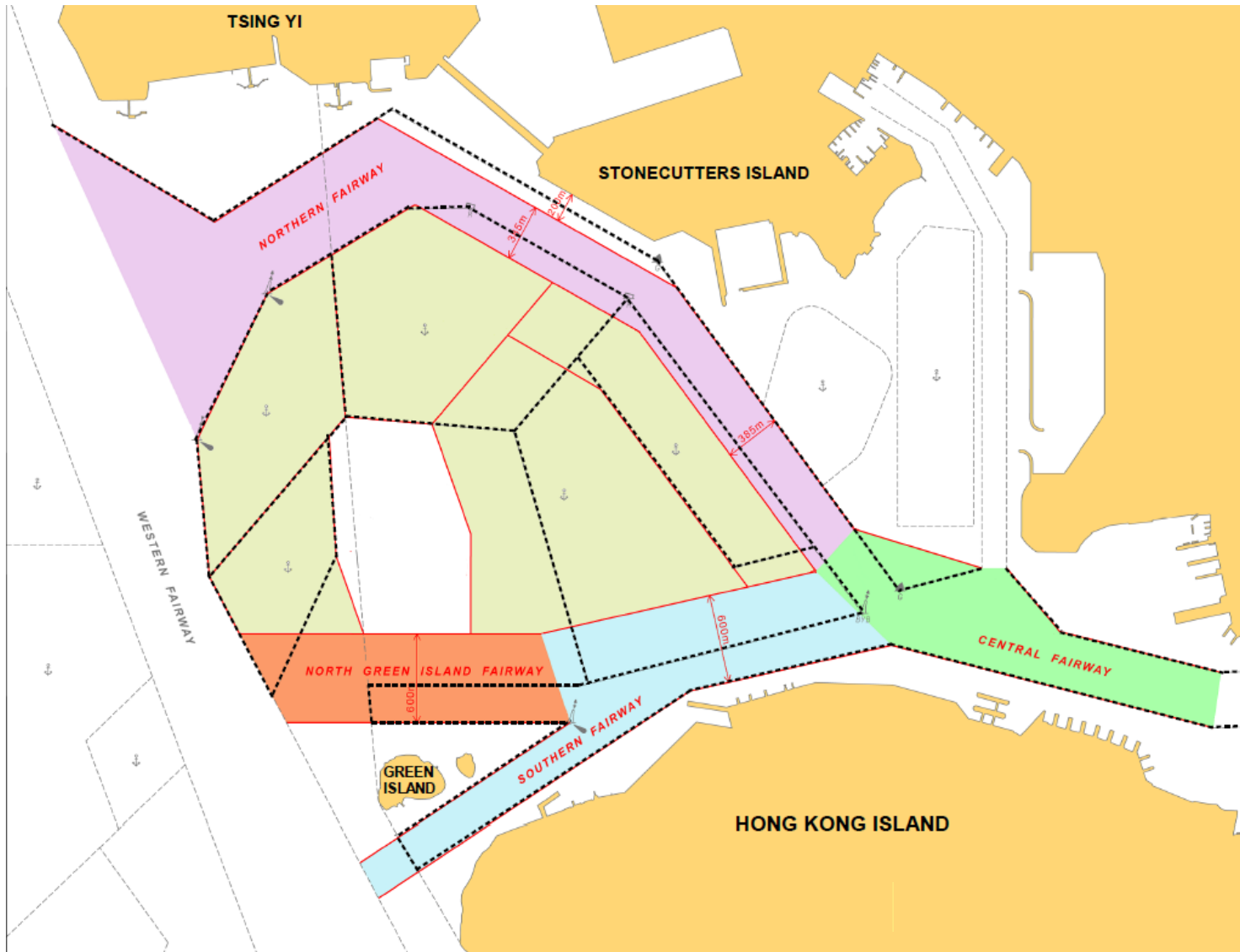
- (a) make adjustments to the boundaries of the areas of the waters of Hong Kong in which a local vessel may only proceed within speed limits; and
- (b) make technical textual amendments.

### Proposed Establishment of New Principal Fairways





Proposed Re-alignment of Four Existing Principal Fairways



Legend

- === : Existing fairways and anchorages
- : Proposed re-alignment
- : Proposed Northern Fairway
- : Proposed Central Fairway
- : Proposed Southern Fairway
- : Proposed North Green Island Fairway
- : Proposed re-aligned anchorages