

LegCo Joint Subcommittee to Monitor the Implementation of the West Kowloon Cultural District Project 立法會監察西九文化區計劃推行情況聯合小組委員會

立法會 CB(1)825/18-19(02)號文件
LC Paper No. CB(1)825/18-19(02)

Integration and connectivity of
the West Kowloon Cultural District
with its neighbouring districts
西九文化區與鄰近地區的融合和連接

01-04-2019





westKowloon
西九文化區

Short-term Enhancement 短期改善



Location of Taxi and Public Transport Facilities 的士及公共交通設施位置



-  Bus/GMB Services 巴士/專線小巴士
-  Taxi Stands/ Pick up - Drop off (within WKCD) 的士站/上落客點 (西九文化區內)
-  Taxi Stands/ Pick up - Drop off (outside WKCD) 的士站/上落客點 (西九文化區外)
-  Underground / under covered 地底/有蓋

Private Car and Coach Parking Provision 私家車和旅遊巴士停泊設施



Landing Facilities (Target Completion year): 2022/2023

水上登岸設施 (目標落成年份：2022/2023)

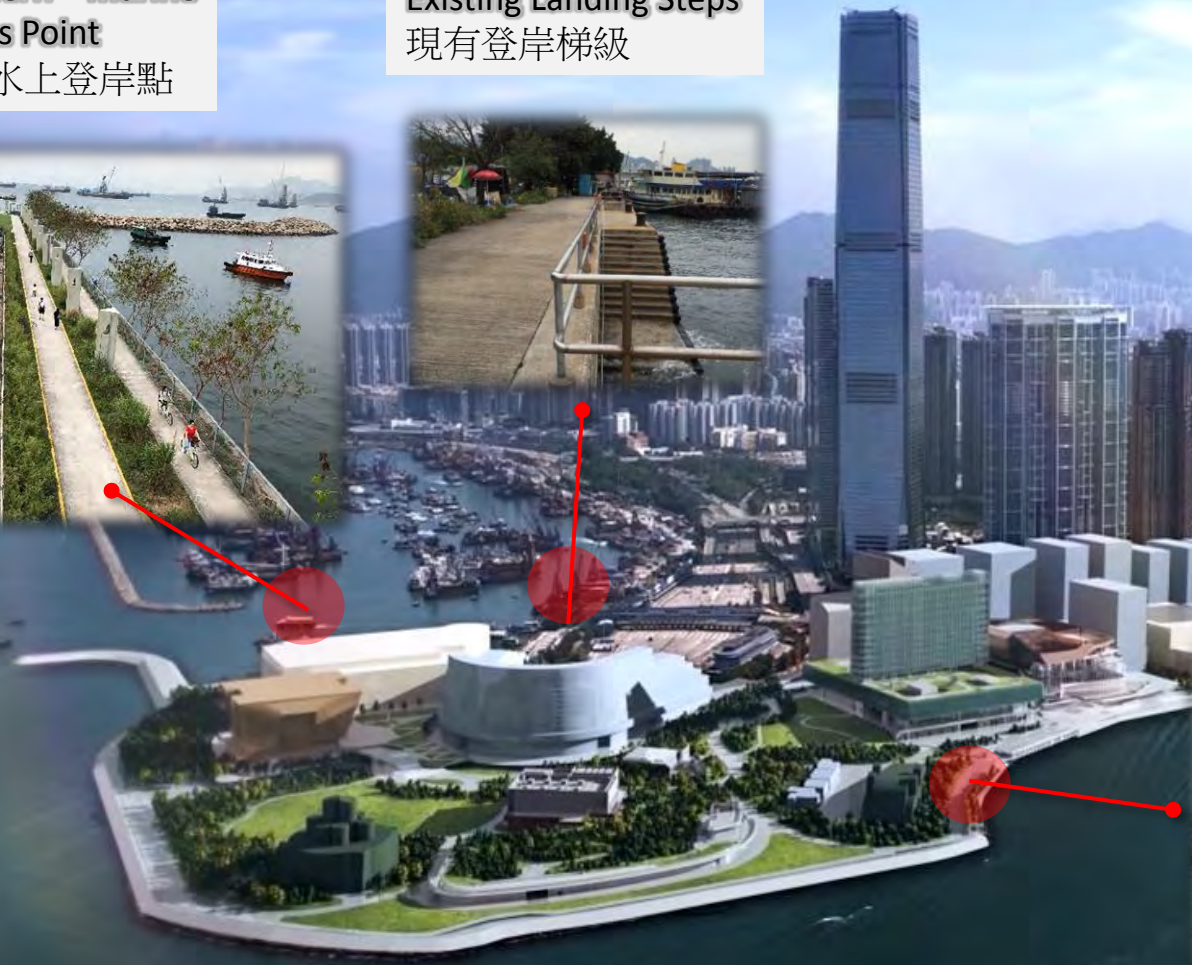
Northern Marine
Access Point
北面水上登岸點



Existing Landing Steps
現有登岸梯級



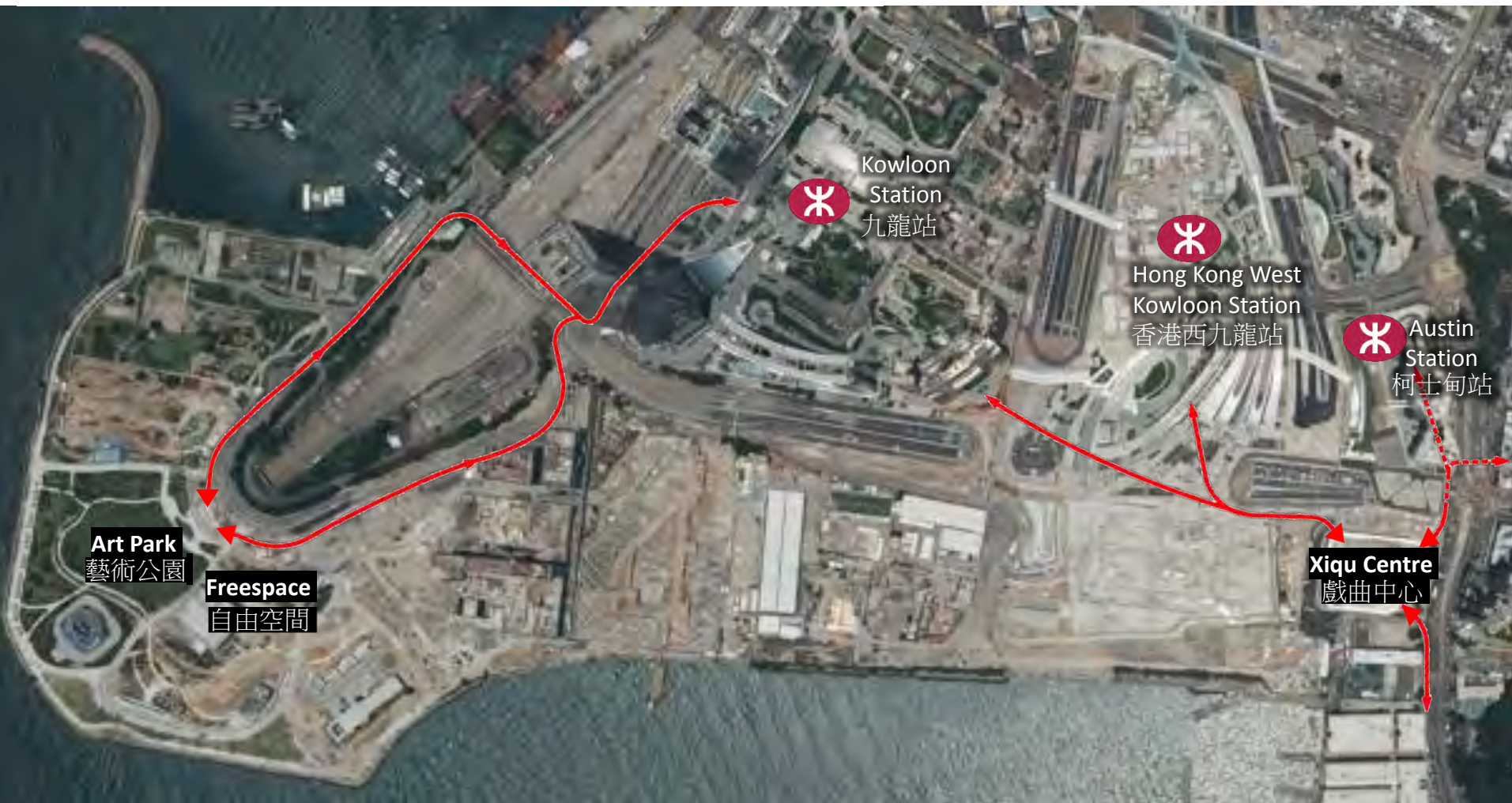
Southern Marine
Access Point
南面水上登岸點



Pedestrian Connection Network 行人連接網絡



Existing Pedestrian Connections 現有行人連接



Beautification to the Pedestrian Subway 行人隧道美化工程



Wall panel with new theme
牆板上的新主題



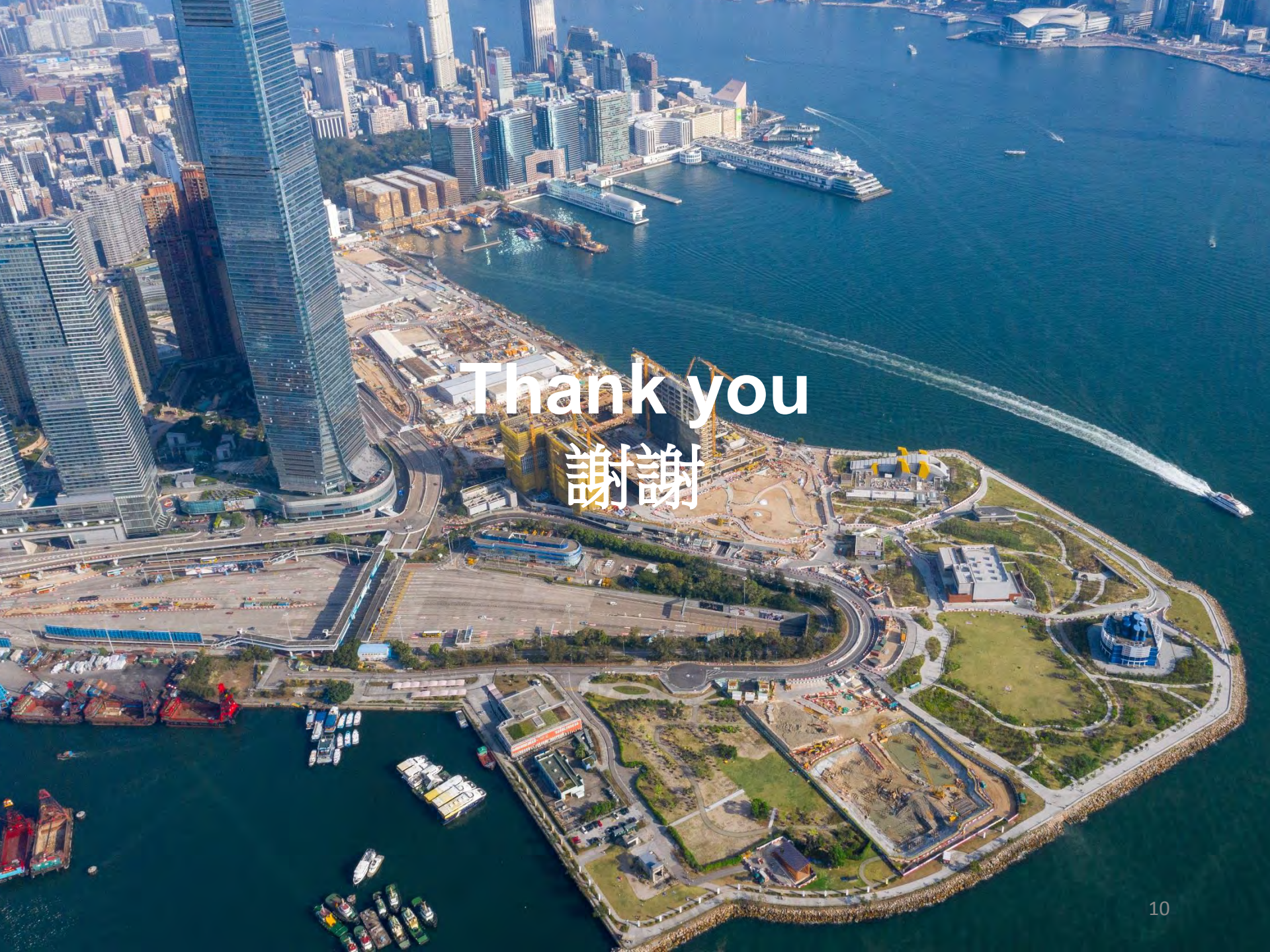
New signs for pedestrians
新的行人指示牌



Soffit Lighting
拱腹照明



Light Boxes Installation
燈箱裝置



Thank you
謝謝

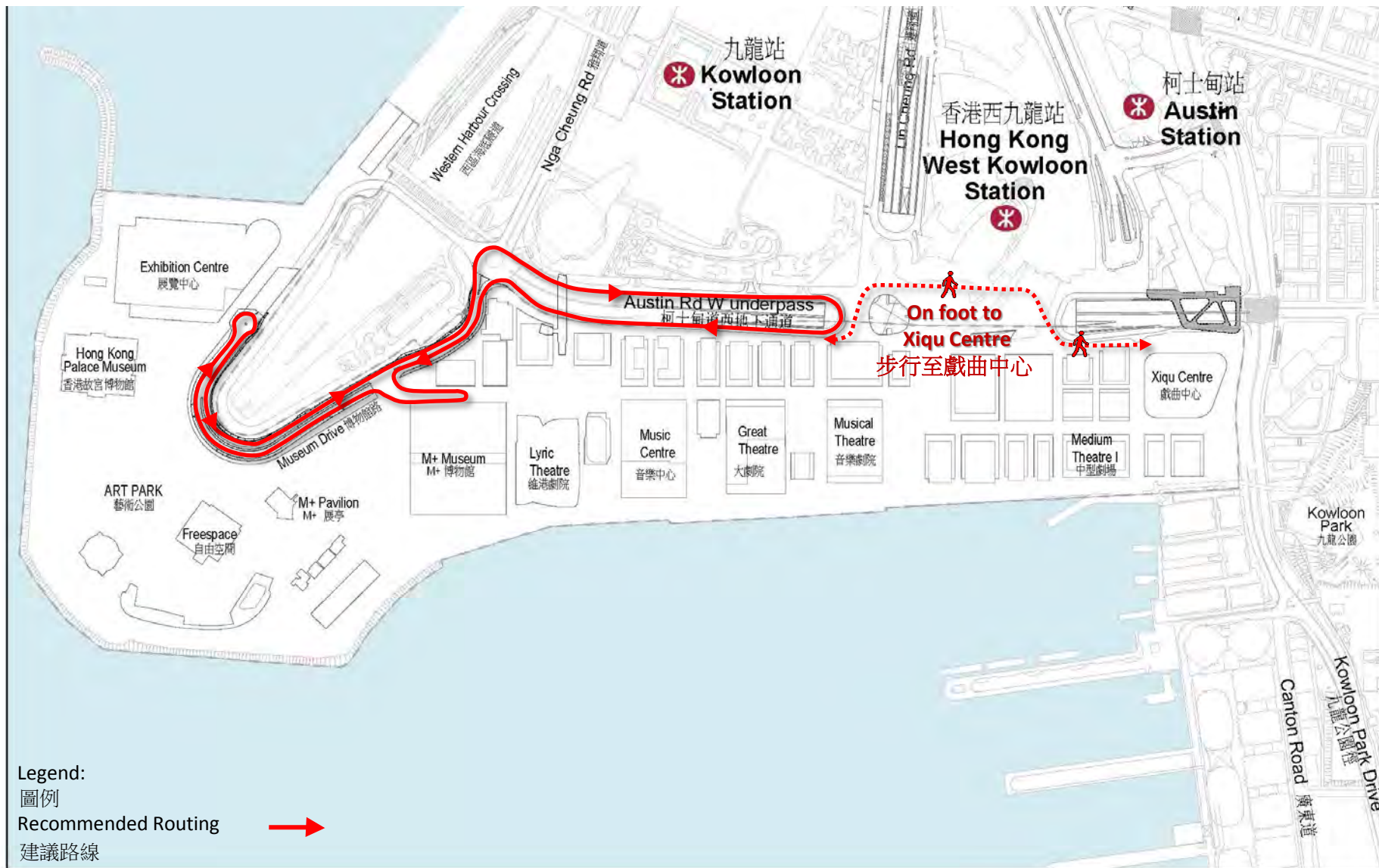
westKowloon

西九文化區

Back-up slides

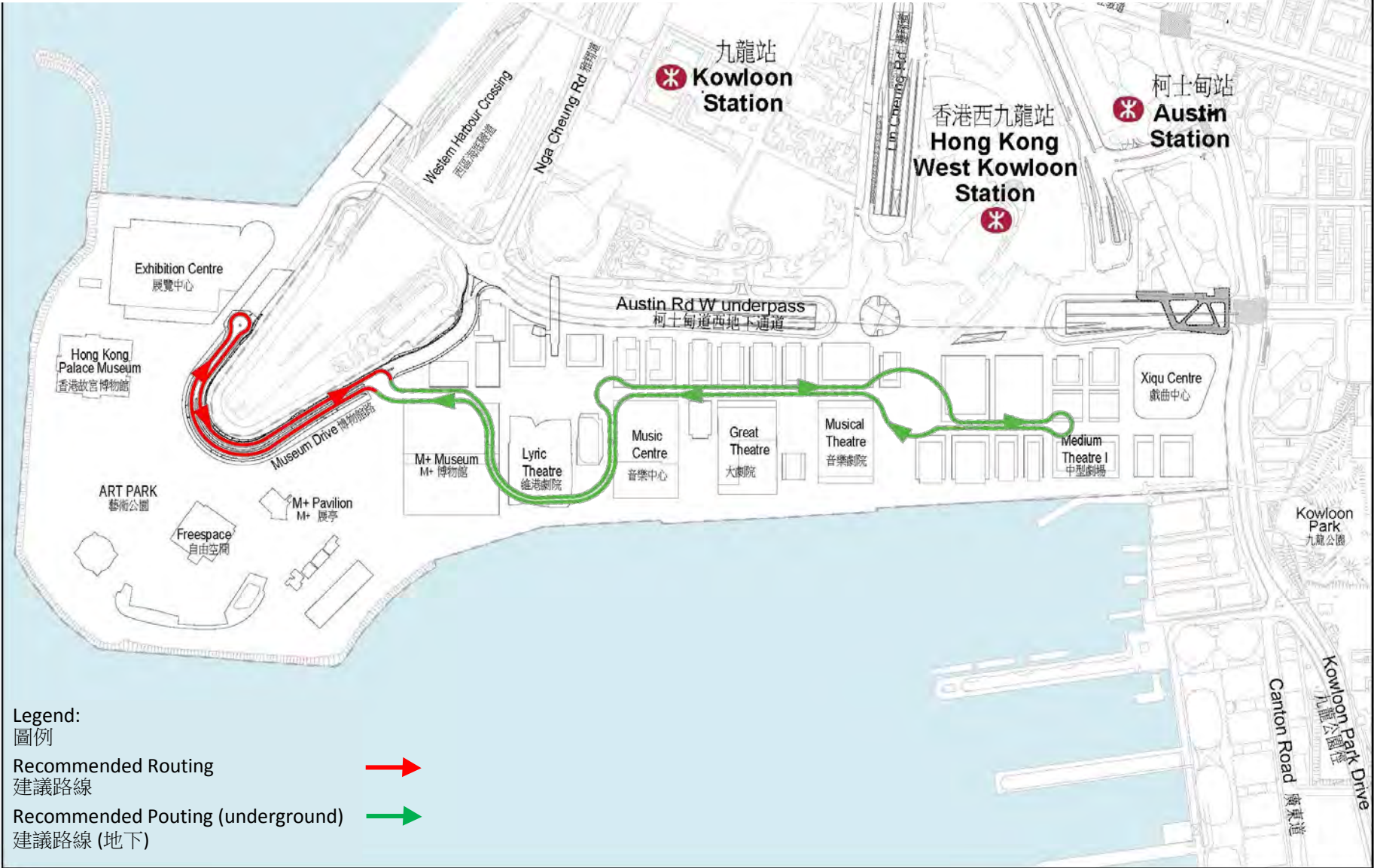
中期 (環保運輸系統路線圖) – 初步構思

Medium Term (EFTS Routing Plan) – Under Consideration



遠期 (環保運輸系統路線圖) – 初步構思

Long Term (EFTS Routing Plan) – Under Consideration



- Legend:
圖例
- Recommended Routing ➔ 建議路線
 - Recommended Pouting (underground) ➔ 建議路線 (地下)

Connecting the World 與世界接軌



來自倫敦、紐約、巴黎、東京和新加坡等地

From London, New York, Paris, Tokyo and Singapore, etc.



機場快線
九龍站
Kowloon Station
Airport Express



來自香港島、九龍、新界和中國內地

From Hong Kong Island, Kowloon, New Territories, Mainland China



潛在的北面水上登岸點
Proposed Northern
Marine Access



高鐵西九龍站
XRL West Kowloon Terminus



潛在的面面水上登岸點
Proposed Southern
Marine Access



中港客運碼頭
China Ferry Terminal



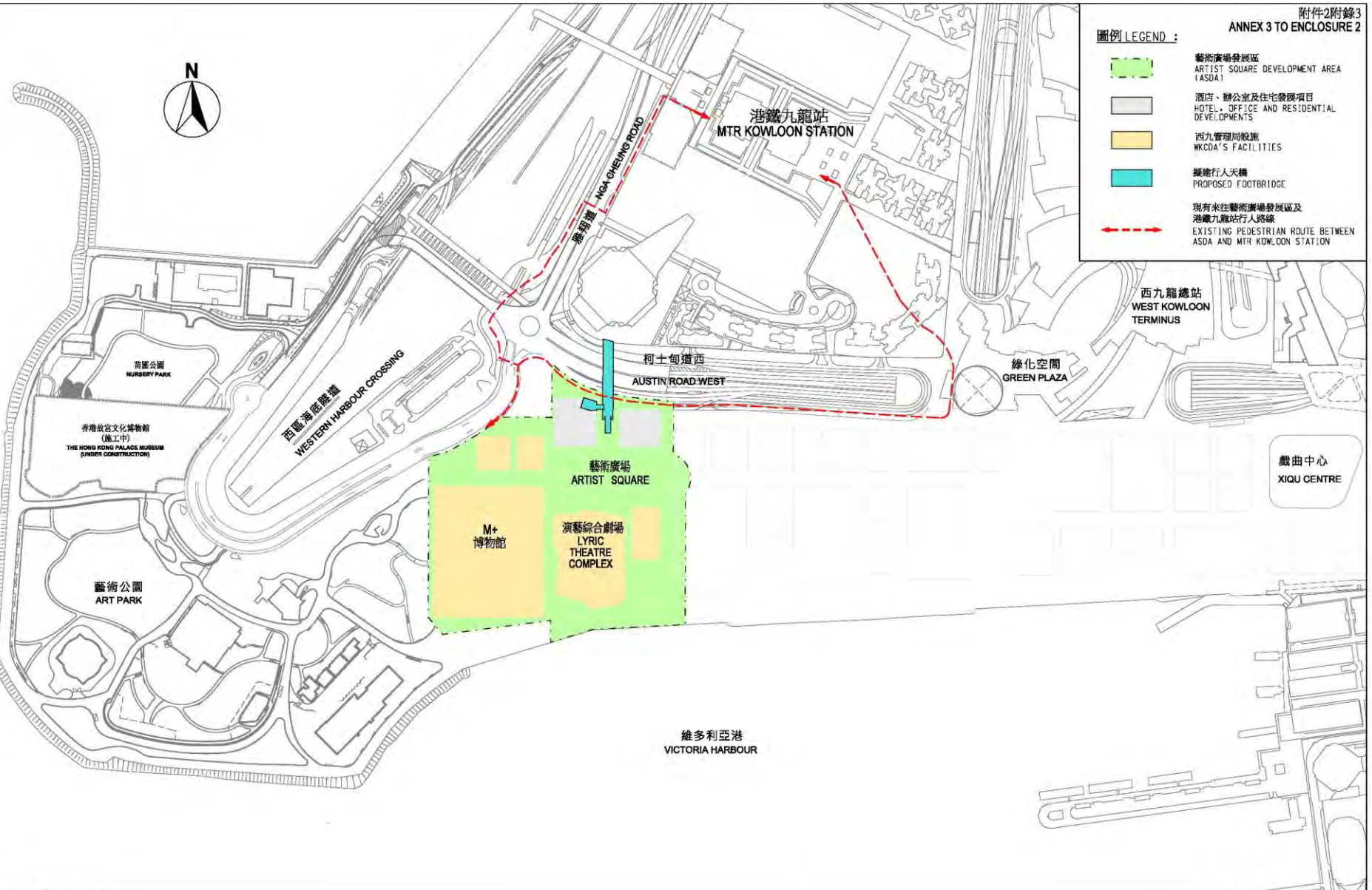
來自香港島、澳門、中國內地和世界各地
From Hong Kong Island, Macau, Mainland China and other parts of the world



天星碼頭
Star Ferry Pier

圖例 LEGEND :

-  藝術廣場發展區
ARTIST SQUARE DEVELOPMENT AREA (ASDA)
-  酒店、辦公室及住宅發展項目
HOTEL, OFFICE AND RESIDENTIAL DEVELOPMENTS
-  西九管理局設施
WKCD'S FACILITIES
-  擬建行人天橋
PROPOSED FOOTBRIDGE
-  現有來往藝術廣場發展區及
港鐵九龍站行人路線
EXISTING PEDESTRIAN ROUTE BETWEEN
ASDA AND MTR KOWLOON STATION



項目名稱 PROJECT TITLE
 7754CL號(部分) - 西九文化區基礎建設工程第一期 - 第三組建造工程
 7754CL(PART) - INFRASTRUCTURE WORKS FOR WEST KOWLOON CULTURAL DISTRICT,
 PHASE 1 - THIRD CONSTRUCTION PACKAGE

藝術廣場發展區
 ARTIST SQUARE DEVELOPMENT AREA

比例 SCALE
 不按比例
 Not to scale