

**Legislative Council Panel on Environmental Affairs**

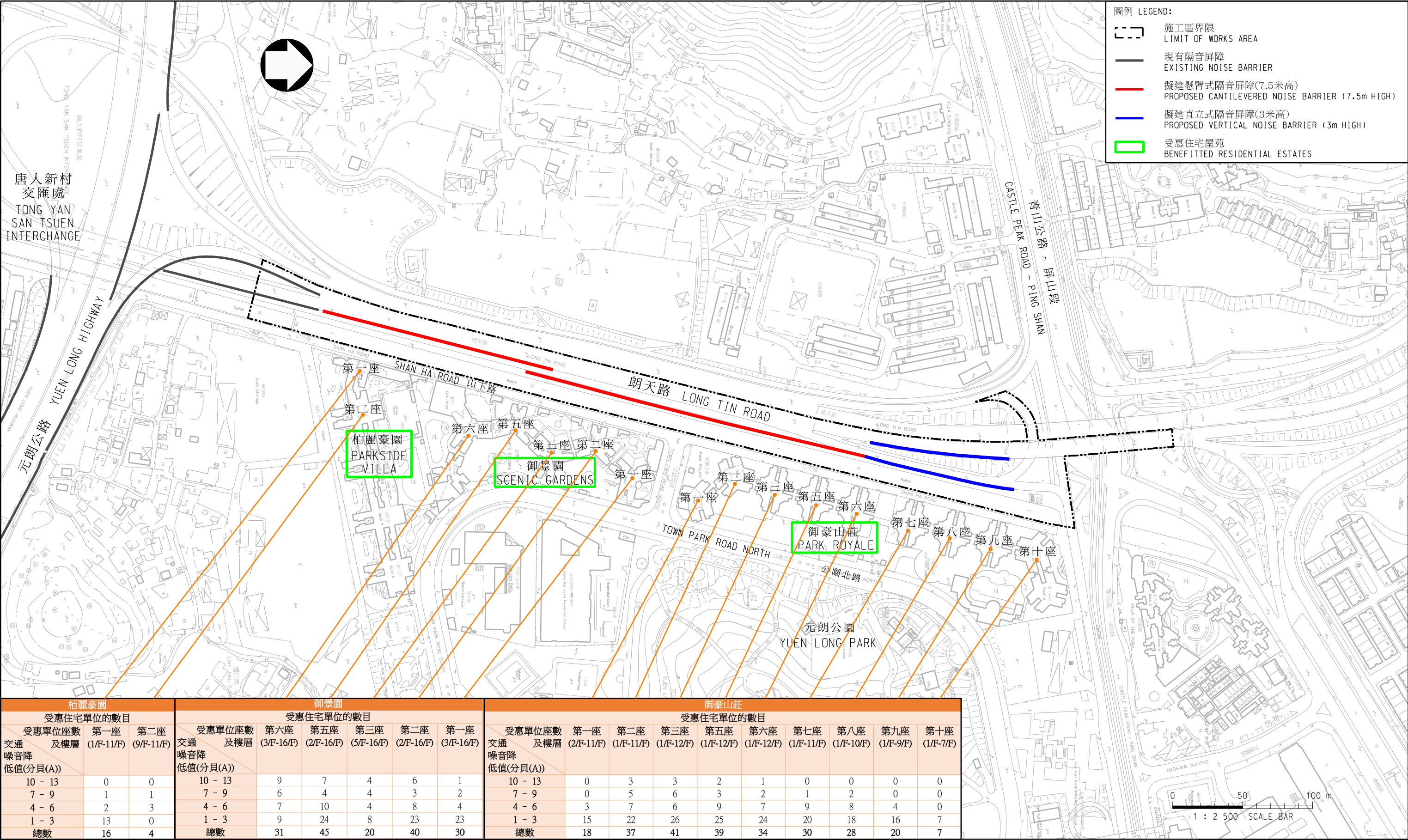
PWP Item No. 6832TH

Retrofitting Noise Barriers on Long Tin Road

Follow-up Actions

The existing noise barriers along Tolo Highway were part of the Tolo Highway widening project. The designs met the requirements of the relevant Environmental Impact Assessment (EIA). These noise barriers used solid sound absorptive panels to avoid noise exceedance over the relevant road traffic noise planning standards at some existing noise sensitive receivers as a result of noise reflection by the noise barriers. The EIA also took into account the visual impact arising from the noise barriers. The aesthetical design of the noise barriers was approved by the Advisory Committee on the Appearance of Bridges and Associated Structures.

Regarding the enquiry of the Panel on Environmental Affairs, if some of the solid absorptive panels in the noise barriers along certain sections of the Tolo Highway are to be replaced with transparent panels, it may lead to increase in noise reflection by the noise barriers and affect the nearby residents. Therefore, the Administration needs to conduct a study to confirm the feasibility of replacing the solid absorptive panels by transparent panels in some of the noise barriers; the noise levels and visual impact after the replacement; and estimations on the cost and time required for the works etc. It will take a few months to complete the study. We will inform the Panel of the study findings.



栢麗豪園			御景園						御豪山莊									
受惠住宅單位的數目			受惠住宅單位的數目						受惠住宅單位的數目									
受惠單位座數 及樓層	第一座 (1/F-11/F)	第二座 (9/F-11/F)	受惠單位座數 及樓層	第六座 (3/F-16/F)	第五座 (2/F-16/F)	第三座 (5/F-16/F)	第二座 (2/F-16/F)	第一座 (3/F-16/F)	受惠單位座數 及樓層	第一座 (2/F-11/F)	第二座 (1/F-11/F)	第三座 (1/F-12/F)	第五座 (1/F-12/F)	第六座 (1/F-12/F)	第七座 (1/F-11/F)	第八座 (1/F-10/F)	第九座 (1/F-9/F)	第十座 (1/F-7/F)
交通 噪音降 低值(分貝(A))			交通 噪音降 低值(分貝(A))						交通 噪音降 低值(分貝(A))									
10 - 13	0	0	10 - 13	9	7	4	6	1	10 - 13	0	3	3	2	1	0	0	0	0
7 - 9	1	1	7 - 9	6	4	4	3	2	7 - 9	0	5	6	3	2	1	2	0	0
4 - 6	2	3	4 - 6	7	10	4	8	4	4 - 6	3	7	6	9	7	9	8	4	0
1 - 3	13	0	1 - 3	9	24	8	23	23	1 - 3	15	22	26	25	24	20	18	16	7
總數	16	4	總數	31	45	20	40	30	總數	18	37	41	39	34	30	28	20	7

圖則名稱 drawing title

工務計劃項目第832TH號 - 朗天路加建隔音屏障工程 - 受惠住宅單位的位置圖

PUBLIC WORKS PROGRAMME ITEM NO. 832TH - RETROFITTING OF NOISE BARRIERS ON LONG TIN ROAD - THE LOCATION MAP OF THE BENEFITTED DWELLINGS

圖則編號 drawing no. HMW6832TH-SK0033 比例 scale 1:2500

© 版權所有 COPYRIGHT RESERVED



HIGHWAYS  
DEPARTMENT  
HONG KONG

路政署  
香港