

For discussion  
on 16 April 2019

**Legislative Council Panel on Food Safety and Environmental Hygiene**  
**Provision of Columbarium and Garden of Remembrance at**  
**Sandy Ridge Cemetery (Phase 1 development)**

**Purpose**

This paper briefs Members on the Food and Environmental Hygiene Department (FEHD)'s project to construct columbarium blocks and a garden of remembrance (GoR) in undeveloped areas within the Sandy Ridge Cemetery (SRC) in the North District.

**Background**

2. With a growing and ageing population in Hong Kong, the number of deaths and cremations has been rising gradually. According to the projection based on the latest demographic data, the cumulative number of cremations would be around 1.2 million in the coming 20 years (from 2019 to 2038). The death toll was over 47 000 in 2018 and it is estimated to increase to 73 900 in 2038. Public demand for niches in columbarium is growing.

3. To increase the supply of public niches in response to the public demand, the Government strives to promote the district-based columbarium development scheme and introduce a more sustainable way to utilise these facilities<sup>1</sup>.

**The Proposed Project**

4. The undeveloped areas within SRC in the North District is one of the sites identified under the district-based columbarium development scheme.

---

<sup>1</sup> In parallel, the Government will step up promotion of green burial, including increasing the number of GoRs, establishing a central register for green burial, and working with various sectors to boost its popularity.

The SRC development comprises the construction of a columbarium with about 200 000 niches, a crematorium and related facilities. Given the scale of the whole Sandy Ridge Columbarium development, the Government plans to carry out the project in two phases as follows –

- (a) Phase 1 (54 000 niches); and
- (b) Phase 2 (146 000 niches).

Site formation works and associated infrastructural works for the whole columbarium development (PWP Item No. 5816CL)<sup>2</sup> commenced in December 2017 and is scheduled for completion in Q2 of 2021.

5. The area for Phase 1 columbarium development is about 40 600 square metres. We propose to develop two columbarium blocks to provide about 54 000 niches. The location plan of the Phase 1 development is at **Enclosure 1**.

## **Project Scope**

6. The scope of works for Phase 1 development (PWP Item No. 3028NB) includes -

- (a) construction of two 5-storey columbarium blocks to provide about 54 000 niches;
- (b) construction of a GoR with a spacious lawn for scattering of cremains and designated walls for mounting of plaques as well as provision of electronic kiosks in the garden for paying tribute to the deceased;
- (c) provision of ancillary facilities for the whole Sandy Ridge Columbarium development such as office, storerooms, , a first aid room, a babycare room, a control room for closed-circuit television (CCTV) and public address (PA) system as well as computer kiosks (for introducing columbaria facilities,

---

<sup>2</sup> Funding for the project was approved by the Finance Committee (FC) of the Legislative Council in October 2017.

promoting green burials and searching for niches of the deceased);

- (d) provision of ancillary facilities for Phase 1 development such as public toilets, CCTV, PA system, lifts and joss paper burners with exhaust air treatment facilities; and
- (e) provision of street furniture and shelters at a pick-up/drop-off area.

A site plan and an artist's impression for the project are at **Enclosures 2 and 3**.

7. The project was upgraded to Category B in 2016. The capital cost of the project is estimated to be about \$1,240.5 million in money-of-the-day prices.

### **Public Consultation**

8. On 9 October 2014, FEHD and the Civil Engineering and Development Department jointly presented the columbarium development proposal as well as the findings of the Traffic Impact Assessment (TIA) to the North District Council (NDC). On 13 December 2018, NDC was further consulted on the design of Phase 1 development. NDC supported the columbarium development at SRC and the design of Phase 1 development. To address NDC Members' concern over the increased traffic and pedestrian volume brought by the columbarium development, the Government will maintain close liaison with NDC through a working group.

### **Traffic Impact Assessment**

9. We completed the TIA Study in 2014. According to the study, the additional traffic and pedestrian volume arising from the columbarium during the Ching Ming and Chung Yeung festive periods should be manageable with the implementation of appropriate traffic mitigation and crowd control measures. These measures, which include the provision of direct special bus services

between designated points and the Sandy Ridge Columbarium during the Ching Ming and Chung Yeung festive periods, will be implemented in three phases<sup>3</sup>.

10. After the proposed columbarium is commissioned, FEHD will work closely with the Hong Kong Police Force and relevant departments to ensure that effective traffic and crowd control measures are implemented during the grave sweeping seasons. Moreover, FEHD will closely monitor the situation and conduct a detailed traffic and public transport review at an appropriate time after commissioning of the SRC columbarium and crematorium facilities. The niche allocation plan may be adjusted as appropriate.

## **Environmental Implications**

11. The project is not a designated project under the Environmental Impact Assessment Ordinance (Cap. 499). A Preliminary Environmental Review (PER) for the project was completed, and the findings were agreed by the Director of Environmental Protection in January 2019. The PER has concluded that with the implementation of the recommended mitigation measures, including using water scrubber and electrostatic precipitator, etc., the project will not cause long-term adverse environmental impacts. To control short-term environmental impacts caused by construction noise, dust and site run-off, FEHD has included in the project estimate the cost to implement suitable mitigation measures in compliance with the established standards and guidelines. These measures include frequent water spraying, use of quiet construction plant, erection of temporary noise barrier, and use of drains to discharge site run-off during construction.

---

<sup>3</sup> In the first phase, we propose that special bus services be provided at Fanling Station Road and Sheung Shui Bus Terminus. To lessen the traffic impact on Fanling and Sheung Shui, special buses will convey passengers from Fanling Station Road to the Sandy Ridge Columbarium via Heung Yuen Wai Boundary Control Point Connecting Road and Lin Ma Hang Road. In the second phase, special bus services will be operated at the future Kwu Tung MTR Station. In the third phase, special bus services will be operated at Fanling South (at Pak Wo Road near Wah Ming Road). The eventual provision of the special bus services will be subject to the bus resources and the passenger demand.

## **Implementation Plan**

12. We plan to seek funding approval from the Public Works Subcommittee and FC in due course. Subject to FC's approval, we target to commence the construction works of Phase 1 columbarium development in Q2 of 2020 for completion by Q1 of 2024.

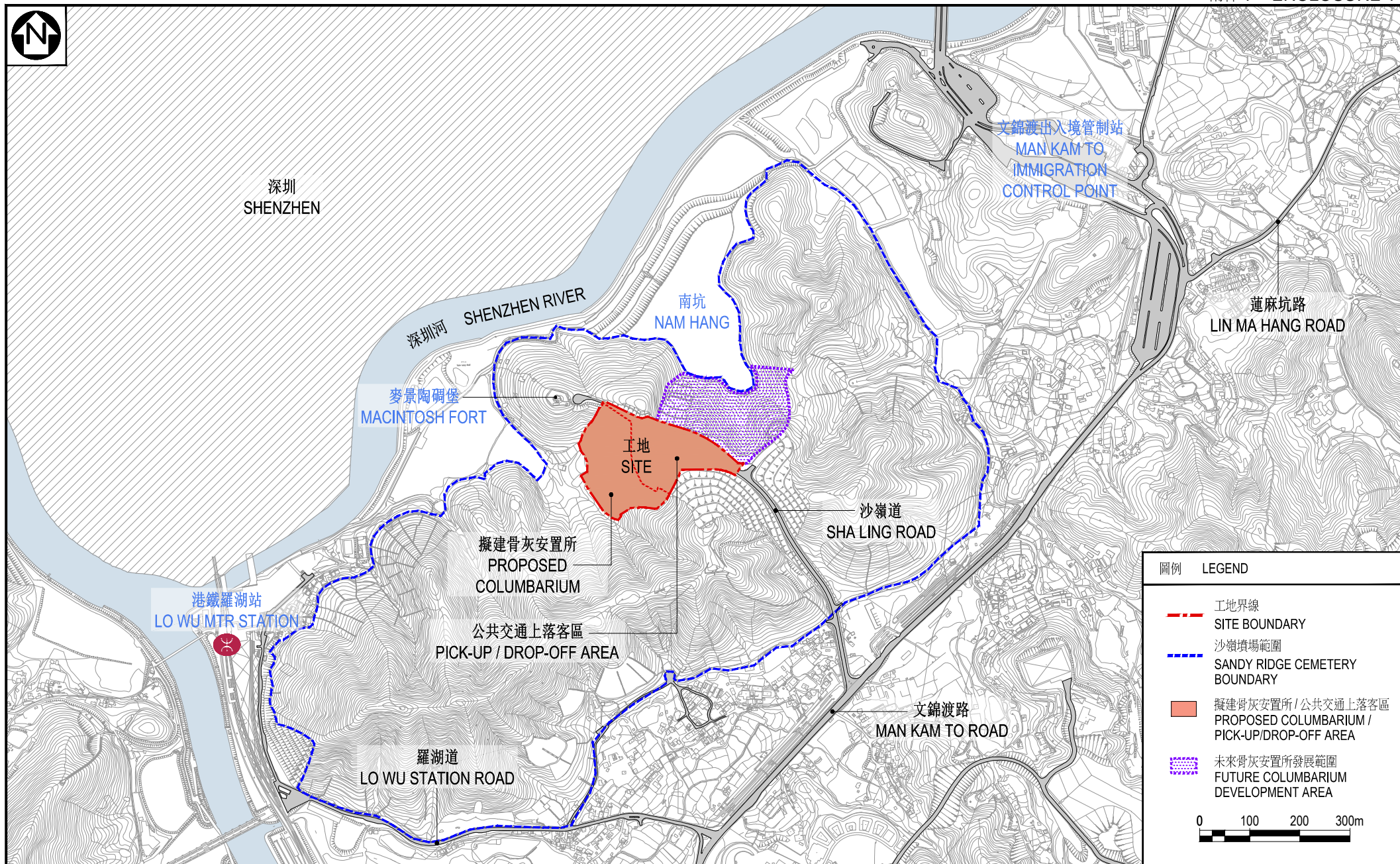
## **Advice Sought**

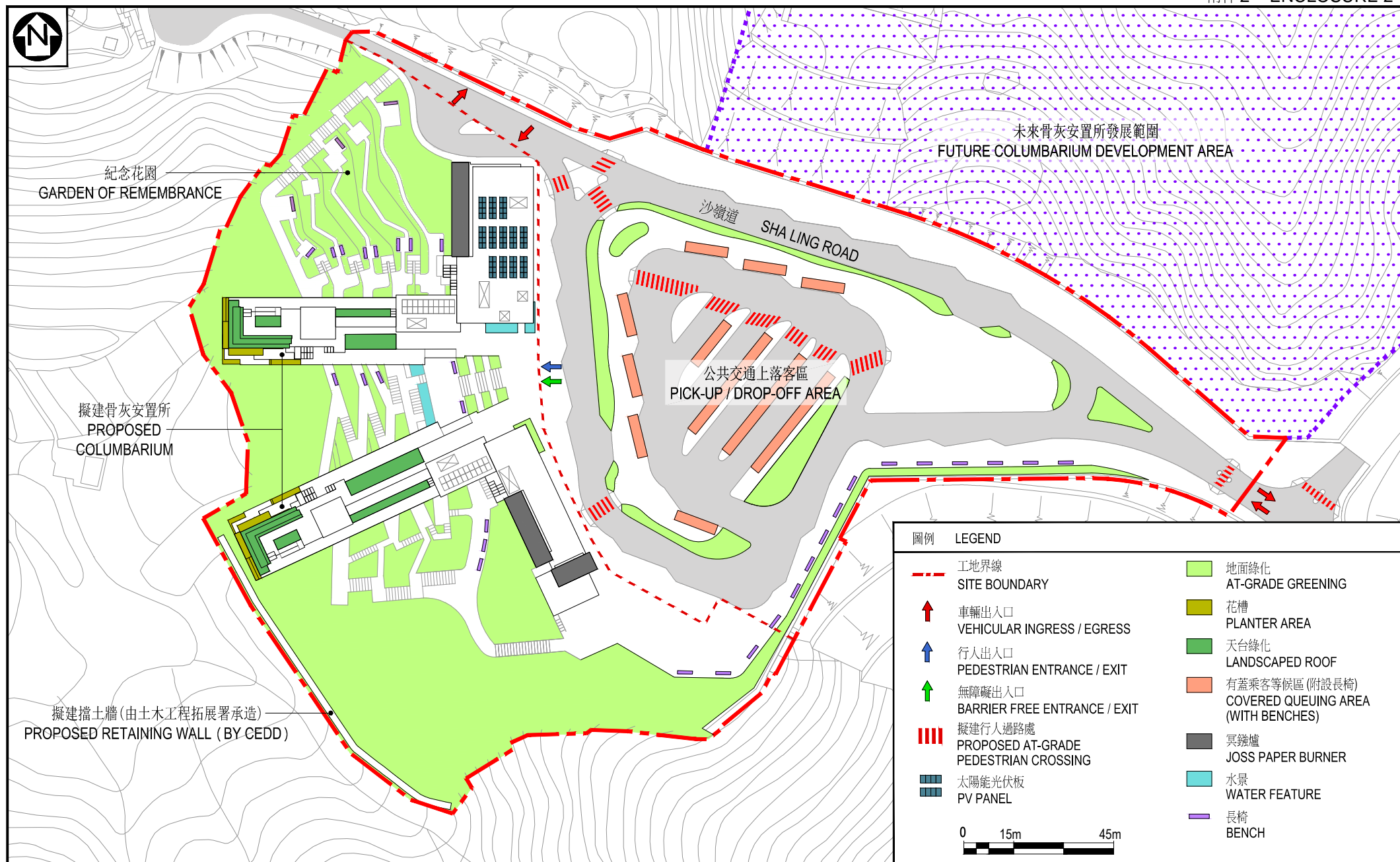
13. Comments from Members on the proposed project are welcome.

**Food and Health Bureau**

**Food and Environmental Hygiene Department**

**April 2019**





工地平面圖  
SITE PLAN

28NB  
在沙嶺墳場興建骨灰安置所及紀念花園(第一期工程)  
PROVISION OF COLUMBARIUM AND GARDEN OF REMEMBRANCE  
AT SANDY RIDGE CEMETERY (PHASE 1 DEVELOPMENT)



ARCHITECTURAL  
SERVICES  
DEPARTMENT 建築署



從西南面望向骨灰安置所的構思透視圖  
 PERSPECTIVE VIEW OF COLUMBARIUM FROM SOUTHWEST DIRECTION

構思圖  
 ARTIST'S IMPRESSION

28NB  
 在沙嶺墳場興建骨灰安置所及紀念花園(第一期工程)  
 PROVISION OF COLUMBARIUM AND GARDEN OF REMEMBRANCE  
 AT SANDY RIDGE CEMETERY (PHASE 1 DEVELOPMENT)

 ARCHITECTURAL  
 SERVICES  
 DEPARTMENT 建築署