



沙田至中環綫項目工程進展

Progress Update on the Construction of the Shatin to Central Link

立法會交通事務委員會

鐵路事宜小組委員會

Legislative Council Panel on Transport

Subcommittee on Matters Relating to Railways

2020年6月5日

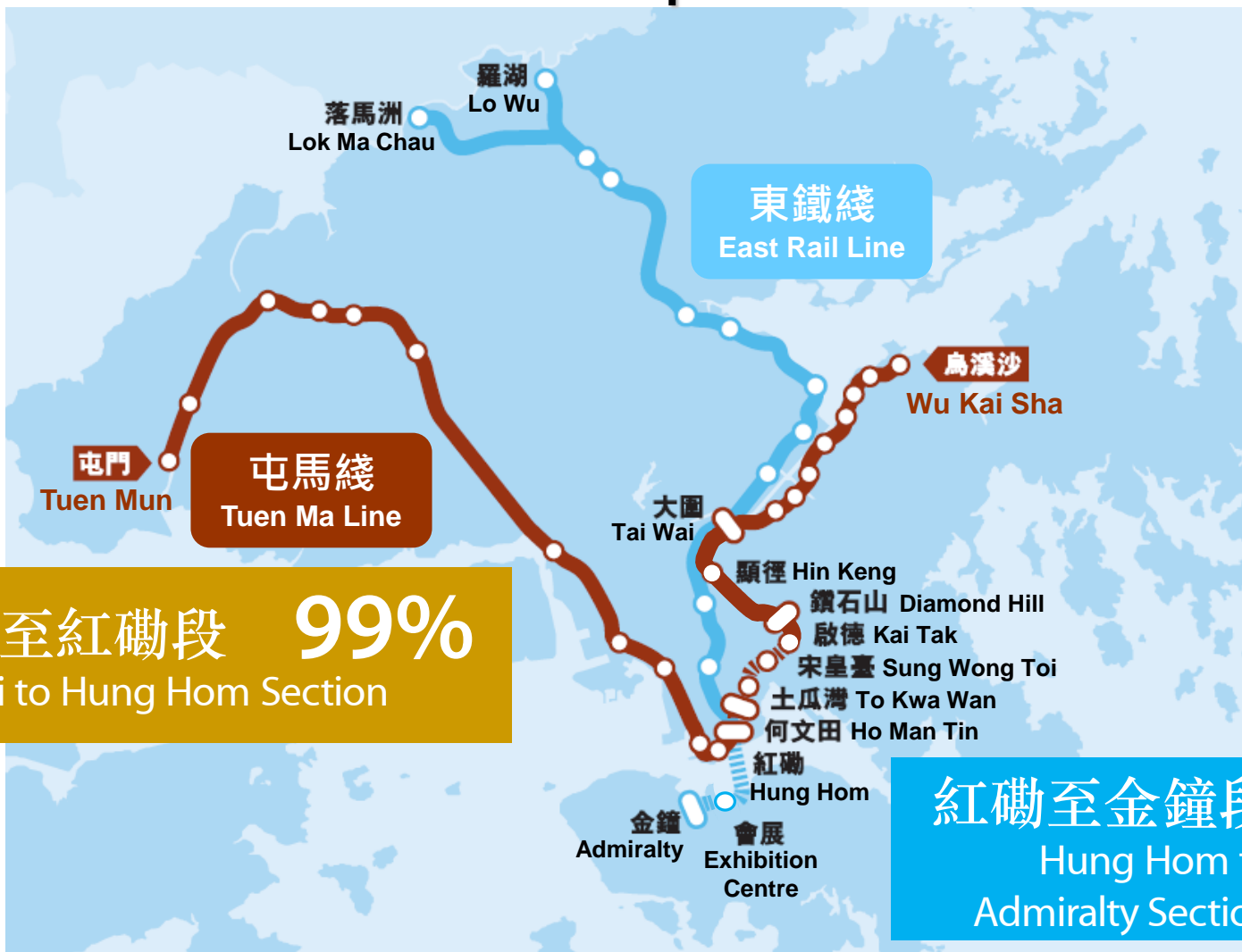
5 June 2020

- 整體工程進展
Overall project progress
- 沙中綫調查委員會最終報告
Final Report of Commission of Inquiry on SCL project
- 紅磡至金鐘段
Hung Hom to Admiralty Section
- 紅磡至金鐘段的主要挑戰
Key challenges on Hung Hom to Admiralty Section

截至 2020年3月31日整體工程進度

As at 31 Mar 2020,
of the overall works completed

93%

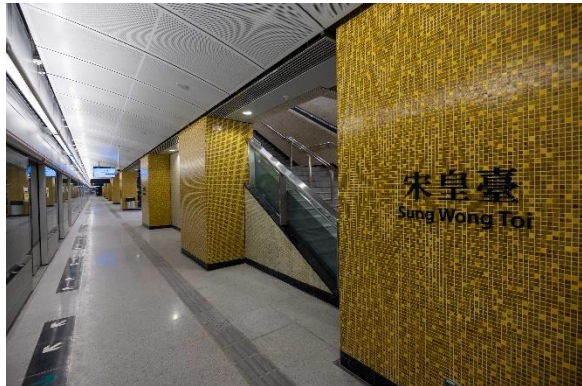


宋皇臺站及土瓜灣站的法定檢測工作

Statutory inspections for Sung Wong Toi and To Kwa Wan Stations

- 宋皇臺站及土瓜灣站的法定檢測工作及所有車站出入口的外部裝修工程已完成。

Statutory inspections and all external finishing work at entrances for Sung Wong Toi and To Kwa Wan stations are complete.



宋皇臺站
Sung Wong Toi Station



土瓜灣站
To Kwa Wan Station



紅磡站進展

Hung Hom Station Update

- 委員會確認在完成適當措施後，紅磡站擴建部分及其鄰近的相關結構安全並適合作預定之用途。

The final report has concluded the relevant structures at and near the Hung Hom Station Extension are **safe and fit for purpose** with the completion of suitable measures.



適當措施的工程進展順利，
目標於6月完成。

Suitable measures are progressing satisfactorily with a target to complete in June.

沙中綫調查委員會最終報告

Final Report of Commission of Inquiry on SCL project

持續改善項目管理

Continuous improvements on project management practices

- 港鐵公司察悉委員會指出在施工過程中有所不足，並就公司在項目管理方面提出建議。

The Corporation notes the Commission has identified inadequacies in respect of the construction process and made recommendations on the Corporation's project management practices.

- 過去兩年，港鐵公司按公司董事局轄下工程委員會以及調查委員會中期報告的建議，在項目管理方面持續引進的一系列改善措施，當中不少已納入日常項目管理流程當中。

Over the past 2 years, the Corporation has been updating and improving a number of its project management practices based on the recommendations of the review conducted by the Capital Works Committee under the MTR's Board and the Commission's interim report. Many of these have already been incorporated into the Corporation's standard practices.

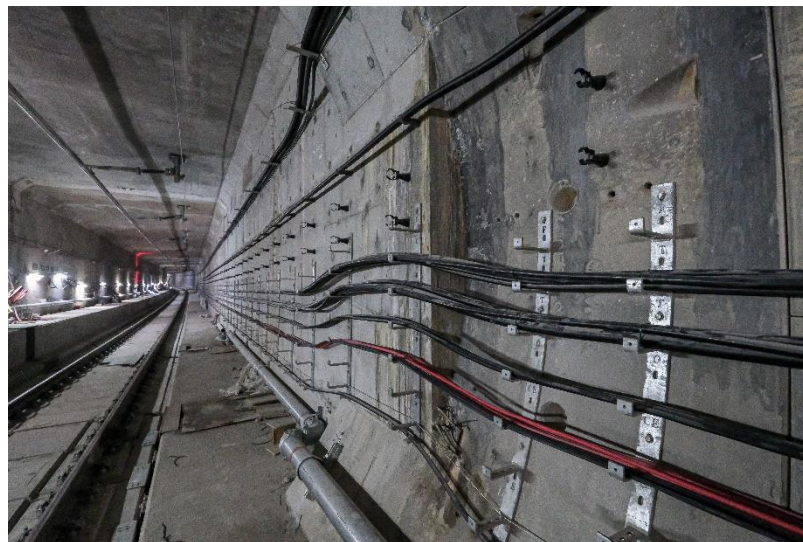
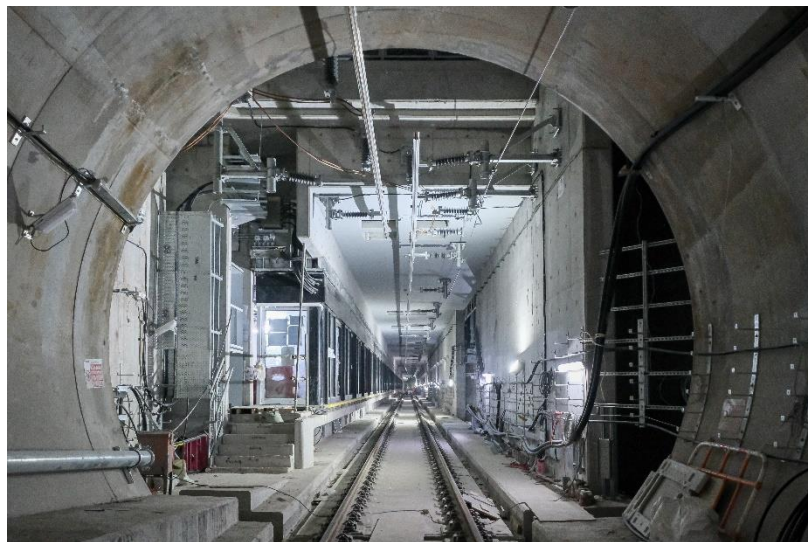
紅磡至金鐘段

Hung Hom to Admiralty Section

過海及港島段隧道

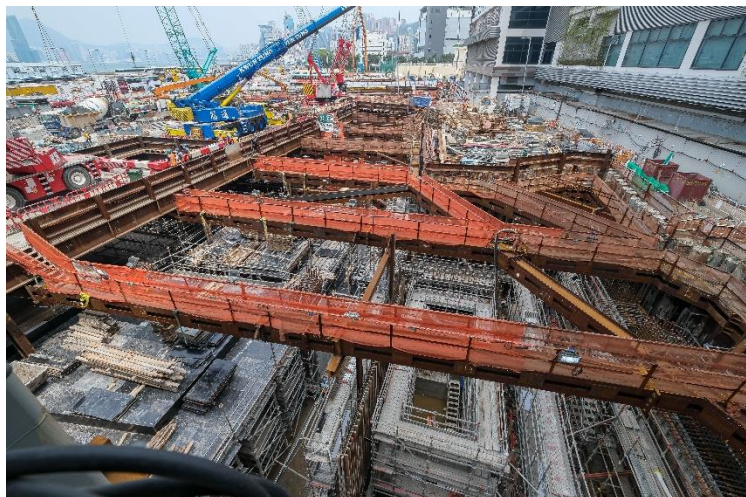
Cross-harbour tunnel and tunnels on Hong Kong Island

- 過海鐵路隧道已完成架空電纜安裝工程
Installation of overhead line for the Cross-Harbour Rail Tunnel is now complete
- 港島段隧道正進行架空電纜及機電設施的安裝工程
Overhead line and E&M installation works are progressing at the tunnels of Hong Kong Island section



會展及金鐘站

Exhibition Centre and Admiralty Stations



- 會展站餘下的結構工程正進行得如火如荼，機電及裝修工程亦已經展開。

Remaining structural works for Exhibition Centre Station are in full swing, while E&M installation and fitting-out works have also commenced.



- 金鐘站擴建部分正在進行裝修及屋宇設備和機電設施的安裝工程。

Architectural finishing works, building services, and E&M work for the extended Admiralty Station are all in progress.

紅磡至金鐘段的主要挑戰

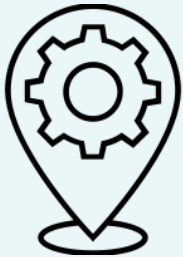
Key challenges on Hung Hom to Admiralty Section

應對新型冠狀病毒疫情

Dealing with COVID-19 pandemic

運用本地資源

Utilisation of local resources



物色其他海外的 物料供應商

Identification of alternative
overseas suppliers for materials



利用科技 進行遙距檢查工作

Use of technology to facilitate
remote inspections



東鐵綫延伸過海的主要工作

Key activities to extend East Rail Line across the harbour

2020年年中

Mid-2020



東鐵綫完成更換
新信號系統

Completion of signalling
replacement on East Rail Line

2020年年中

Starting from mid-2020



東鐵綫逐步
更換新9卡列車

Conversion to new 9-car trains
on East Rail Line in phases

2020年第三季起

Starting from Q3 2020



紅磡站附近的
新軌道接駁工程

Bifurcation work near
Hung Hom Station

總結

Conclusion

- 紅磡站適當措施的工程目標於6月完成。
Implementation of the suitable measures at Hung Hom Station is targeted to complete in June.
- 屯馬綫全綫預計可於2021年第三季通車。
Full opening of the Tuen Ma Line is expected to be in Q3 2021.
- 「紅磡至金鐘段」於2022年第一季通車的目標仍然是一個挑戰，工程團隊會繼續努力達致此目標。
The targeted commencement of passenger services on the Hung Hom to Admiralty Section in Q1 2022 is still a challenge. Projects Team continues to strive to meet the programme.

多謝
Thank You