

LegCo Joint Subcommittee to Monitor the Implementation of the West Kowloon Cultural District Project

立法會監察西九文化區計劃推行情況聯合小組委員會

立法會 CB(1)518/19-20(01)號文件

LC Paper No. CB(1)518/19-20(01)



Update on the development of Zone 2 and the
Connectivity with its neighbouring district

2區的最新發展和與鄰近地區的連接

27-4-2020

westKowloon
西九文化區

westKowloon

西九文化區

Update on the development of Zone 2

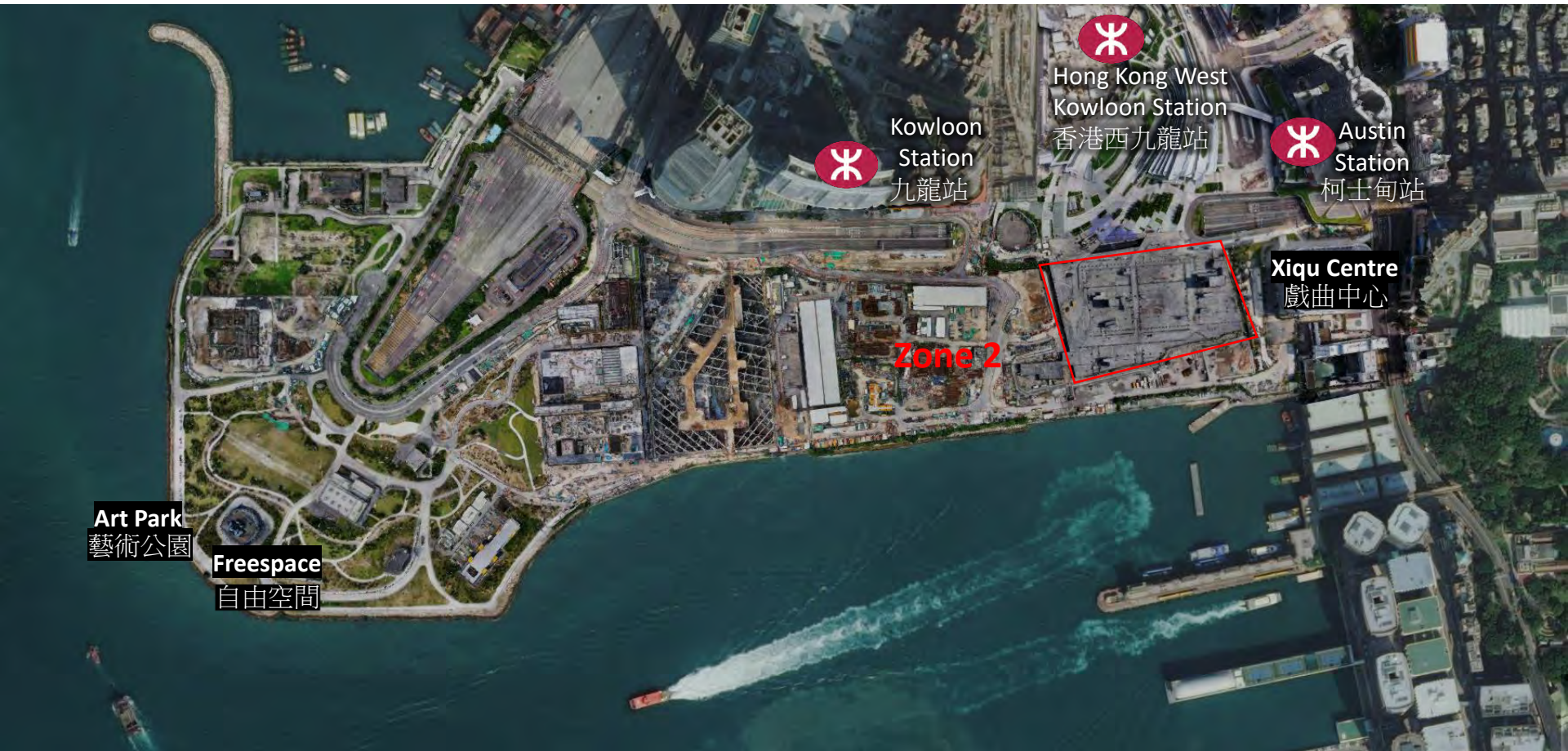
2 區的最新發展

Location of Zone 2

2區位置



Station Box of HK West Kowloon Station 高鐵站的建築結構



Existing WEK Site Condition – Ground Floor 現有高鐵站的狀況 – 地面層

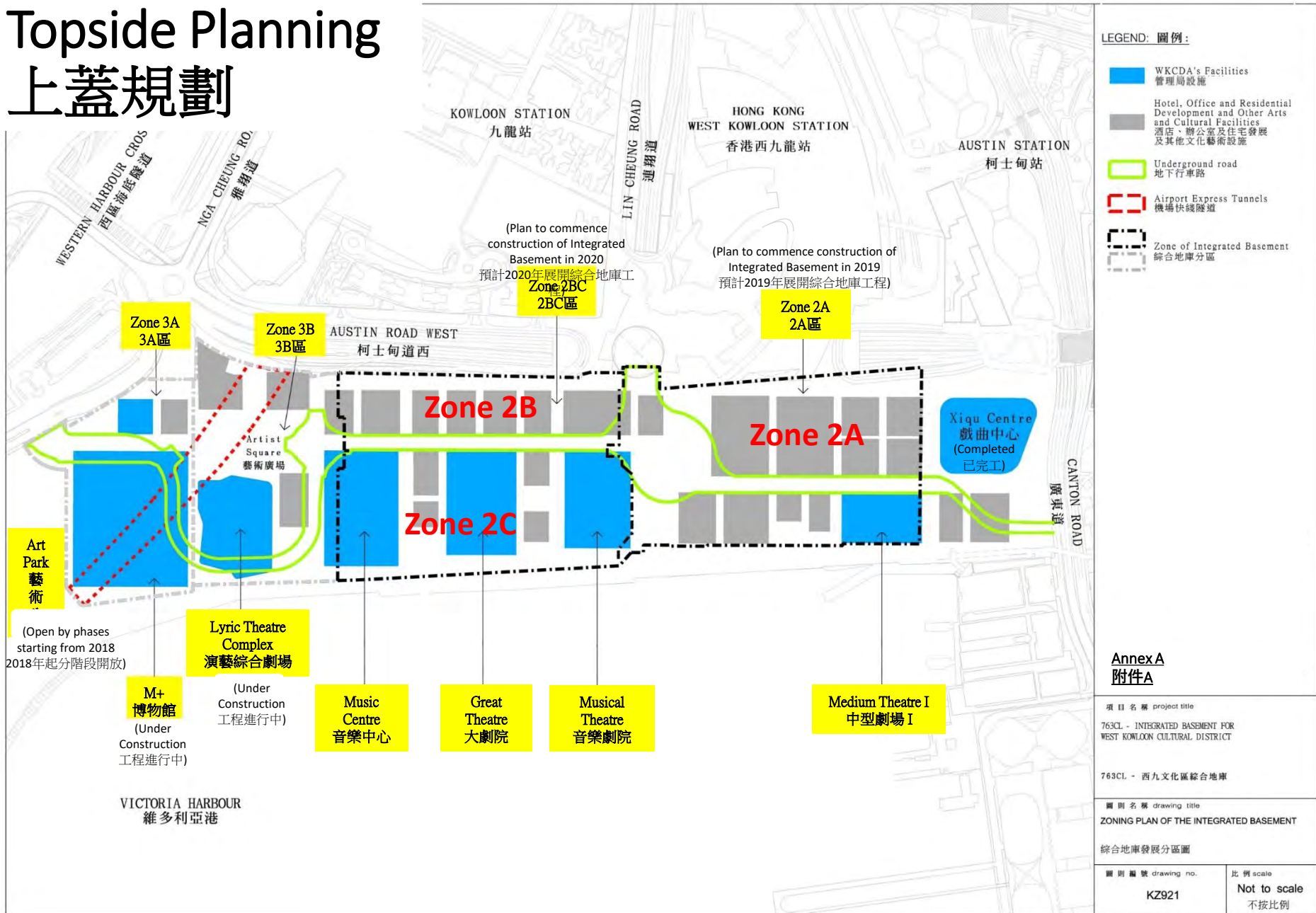


Existing WEK Site Condition – B1 Floor

現有高鐵站的狀況 – B1層



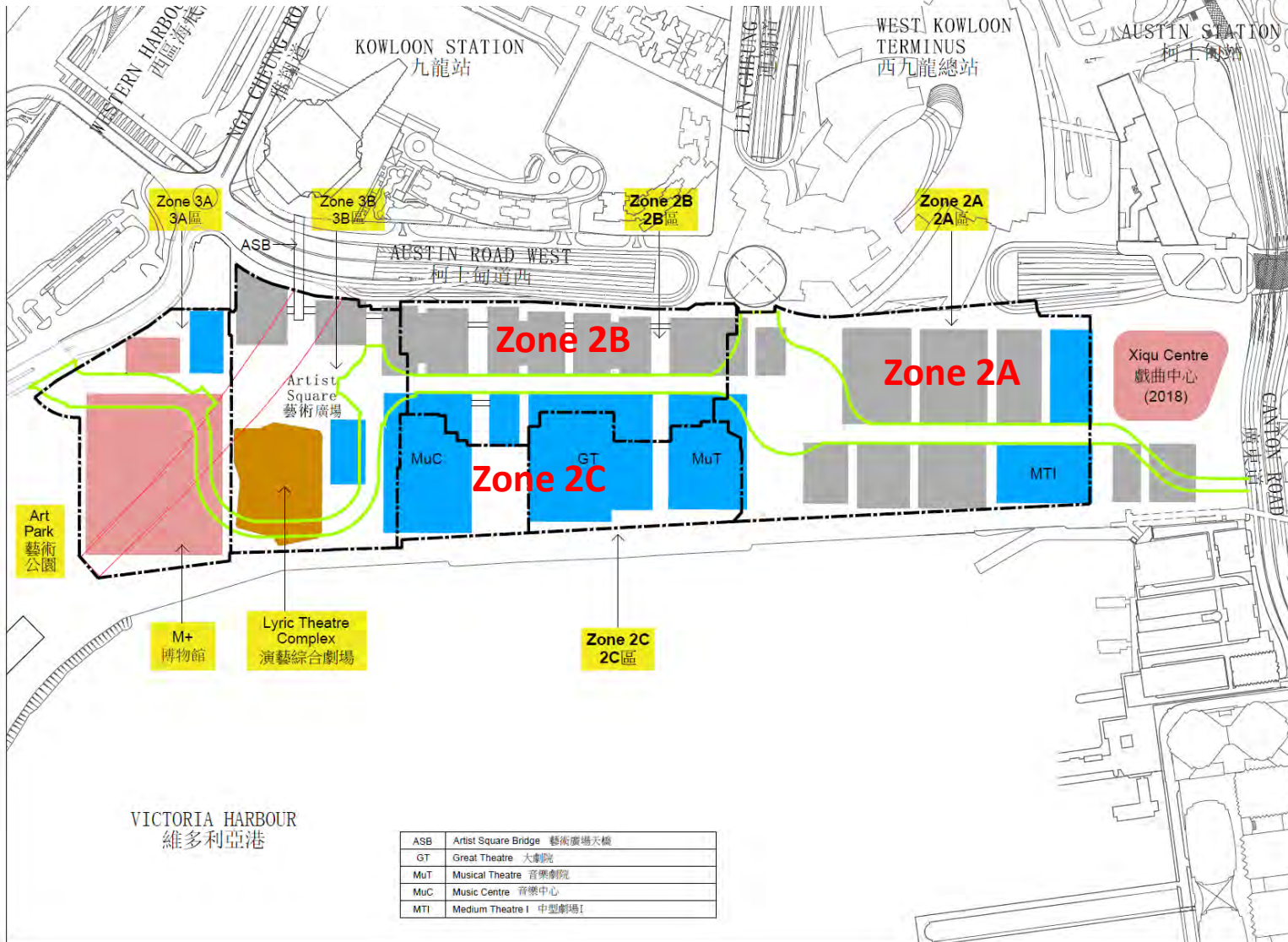
Topside Planning 上蓋規劃



Annex A 附件A

項目名稱 project title	
763CL - INTEGRATED BASEMENT FOR WEST KOWLOON CULTURAL DISTRICT	
763CL - 西九文化區綜合地庫	
圖則名稱 drawing title	
ZONING PLAN OF THE INTEGRATED BASEMENT	
綜合地庫發展分區圖	
圖則編號 drawing no.	比例 scale
KZ921	Not to scale 不按比例

Topside Planning (Amalgamated) 上蓋規劃 (合併)



- LEGEND: 圖例:
- Batch 1 WKCD's Facilities
第一批管理局設施
 - Batch 2 WKCD's Facilities
第二批管理局設施
 - Remaining WKCD's Facilities
餘下管理局設施
 - Hotel, Office and Residential Development
酒店、辦公室及住宅發展
 - Underground road
地下行車路
 - Airport Express Tunnels
機場快線隧道
 - Zone of Integrated Basement
綜合地庫分區

NOTES: 註釋:

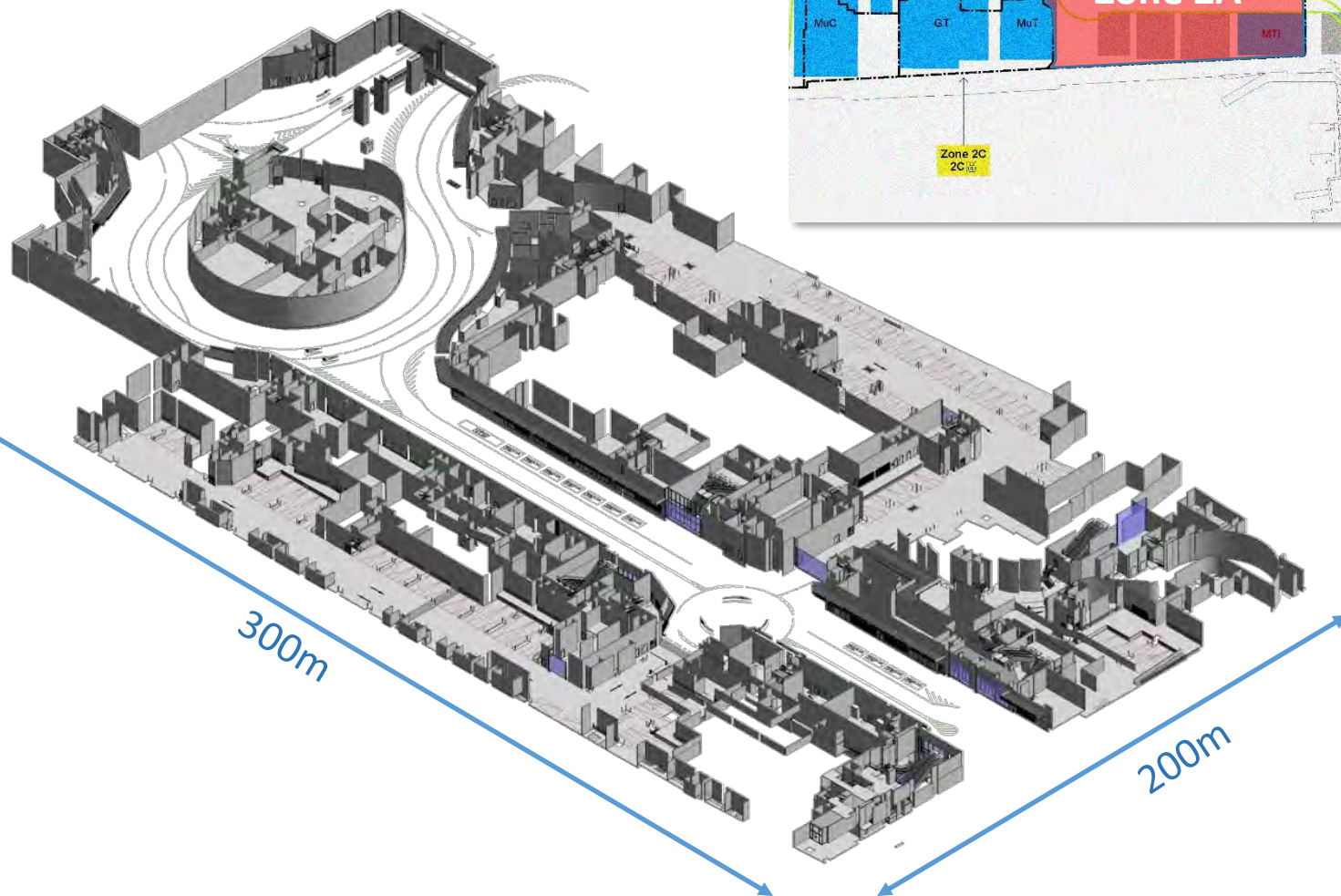
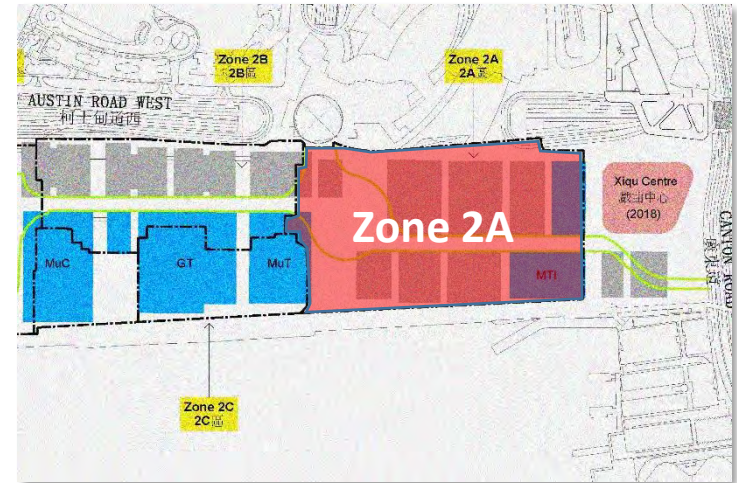
1. GENERAL ARRANGEMENT AND DEMARCATION BETWEEN DIFFERENT ZONES OF INTEGRATED BASEMENT SUBJECT TO DETAILED DESIGN.
綜合地庫的布局及分區分界有待詳細設計確定

ASB	Artist Square Bridge 藝術廣場天橋
GT	Great Theatre 大劇院
MuT	Musical Theatre 音樂劇院
MuC	Music Centre 音樂中心
MTI	Medium Theatre I 中型劇場I

項目名稱	project title
763CL - INTEGRATED BASEMENT FOR WEST KOWLOON CULTURAL DISTRICT	
763CL - 西九文化區綜合地庫	
圖則名稱	drawing title
ZONING PLAN OF THE INTEGRATED BASEMENT	
綜合地庫發展分區圖	
圖則編號	drawing no.
KZ921A-1	
比例	scale
	Not to scale 不按比例

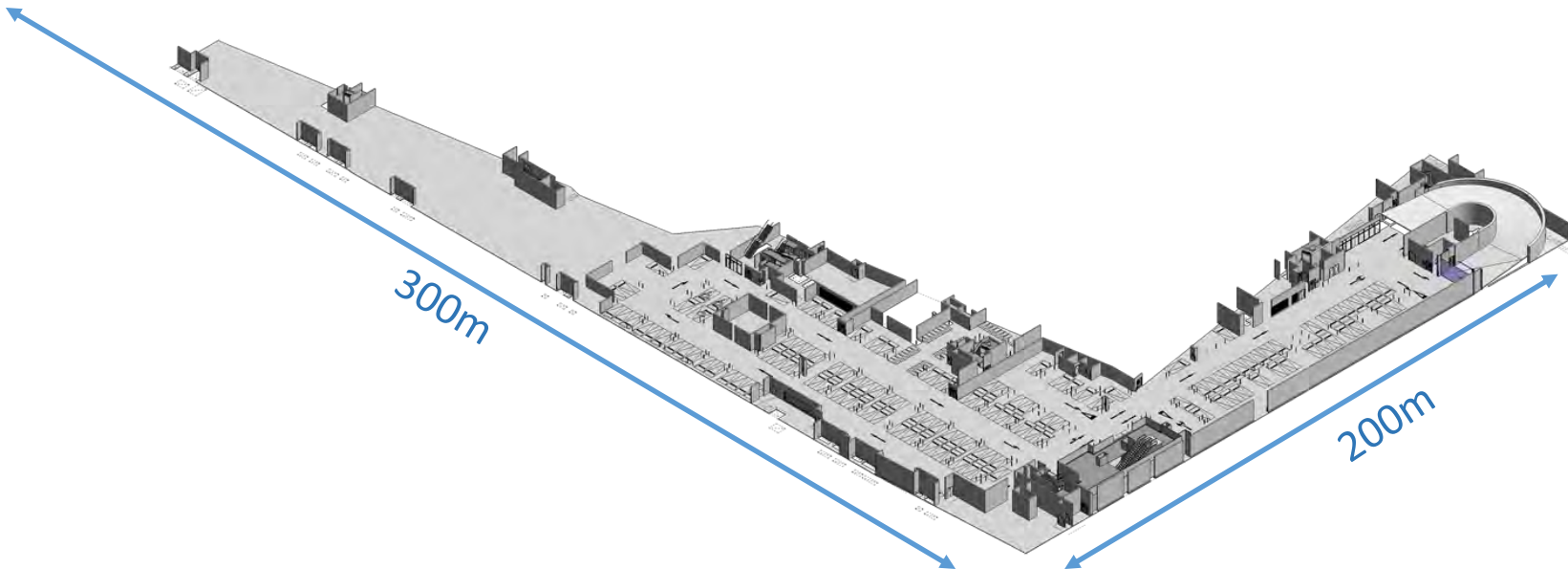
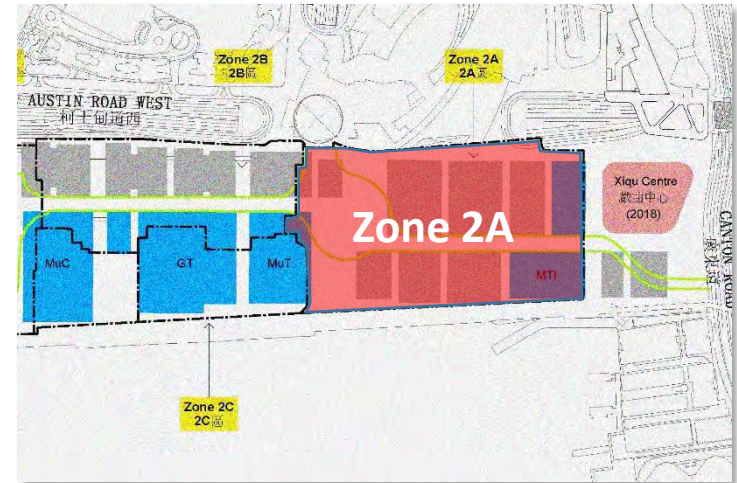
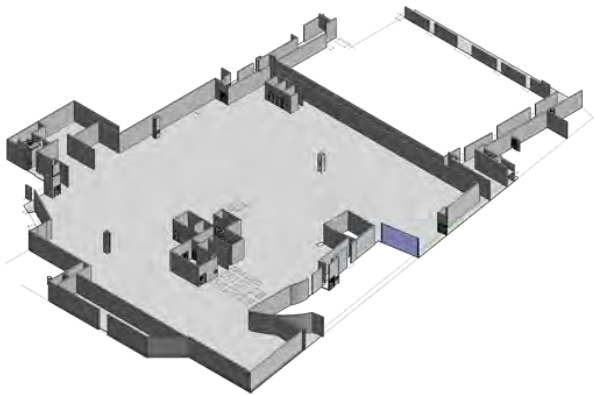
Zone 2A – B1 Floor

2A 區 – B1層



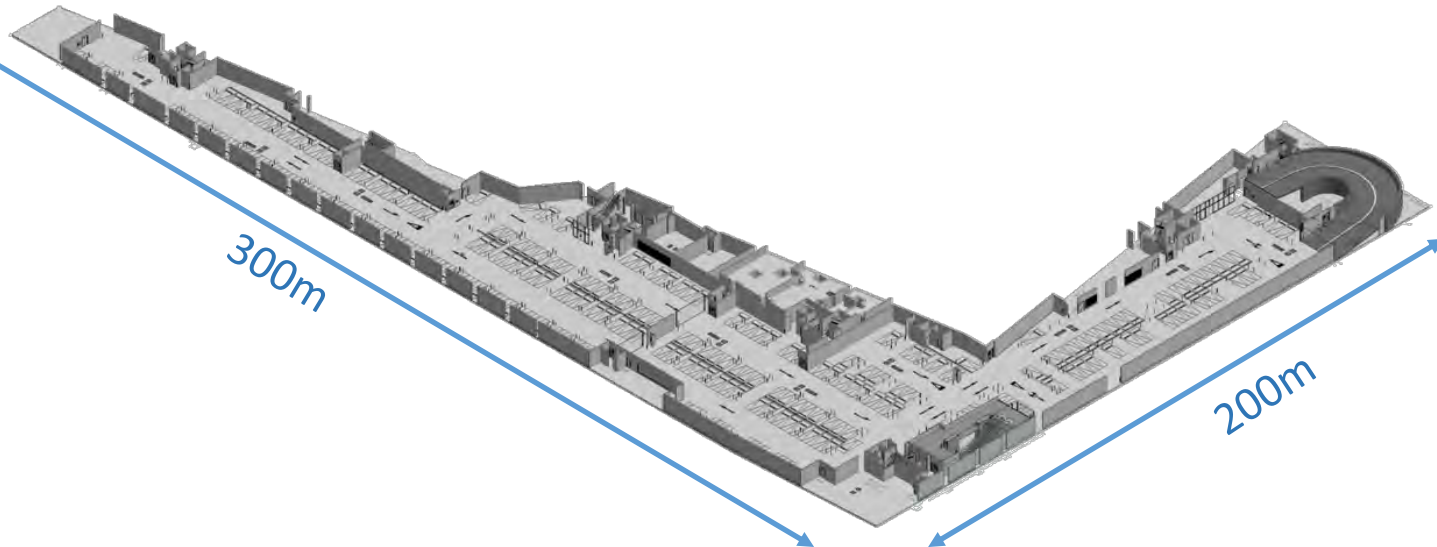
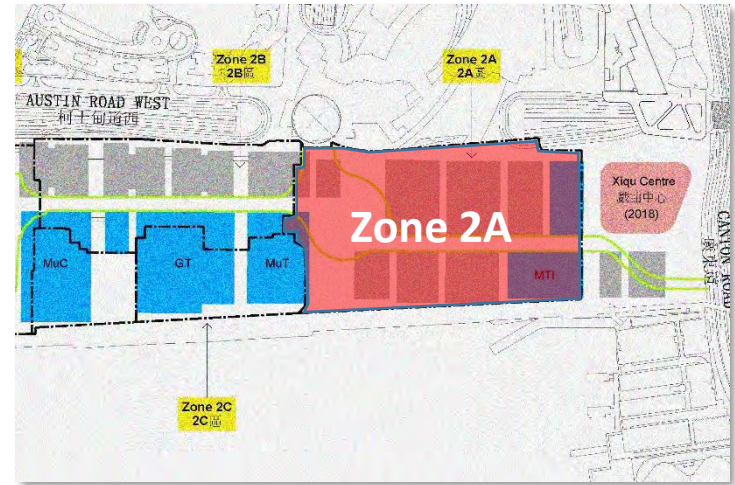
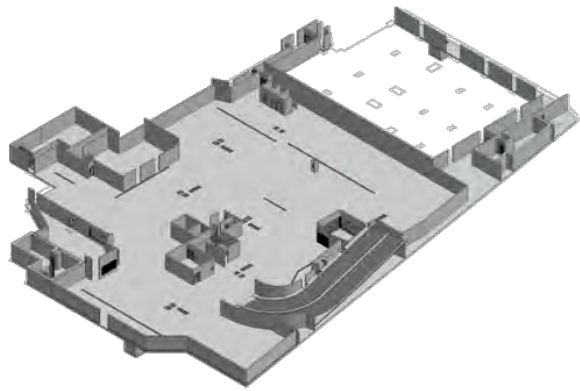
Zone 2A – B2M Floor

2A 區 – B2M層



Zone 2A – B2 Floor

2A 區 – B2層



westKowloon

西九文化區

The Connectivity with its Neighbouring District

與鄰近地區的連接

GMB / Bus Services

綠色專線小巴 / 巴士服務




Existing Taxi Stands / Pick-up and Drop-off Points 現有的士站 / 上落客點



 Taxi Stands/ Pick up - Drop off (within WKCD) 的士站/上落客點 (西九文化區內)

 Taxi Stands/ Pick up - Drop off (outside WKCD) 的士站/上落客點 (西九文化區外)

 Underground / under covered 地底/有蓋

Future Taxi Stands / Pick-up and Drop-off Points 未來的士站 / 上落客點



 Taxi Stands/ Pick up - Drop off (within WKCD) 的士站/上落客點 (西九文化區內)

 Taxi Stands/ Pick up - Drop off (outside WKCD) 的士站/上落客點 (西九文化區外)

 Underground / under covered 地底/有蓋

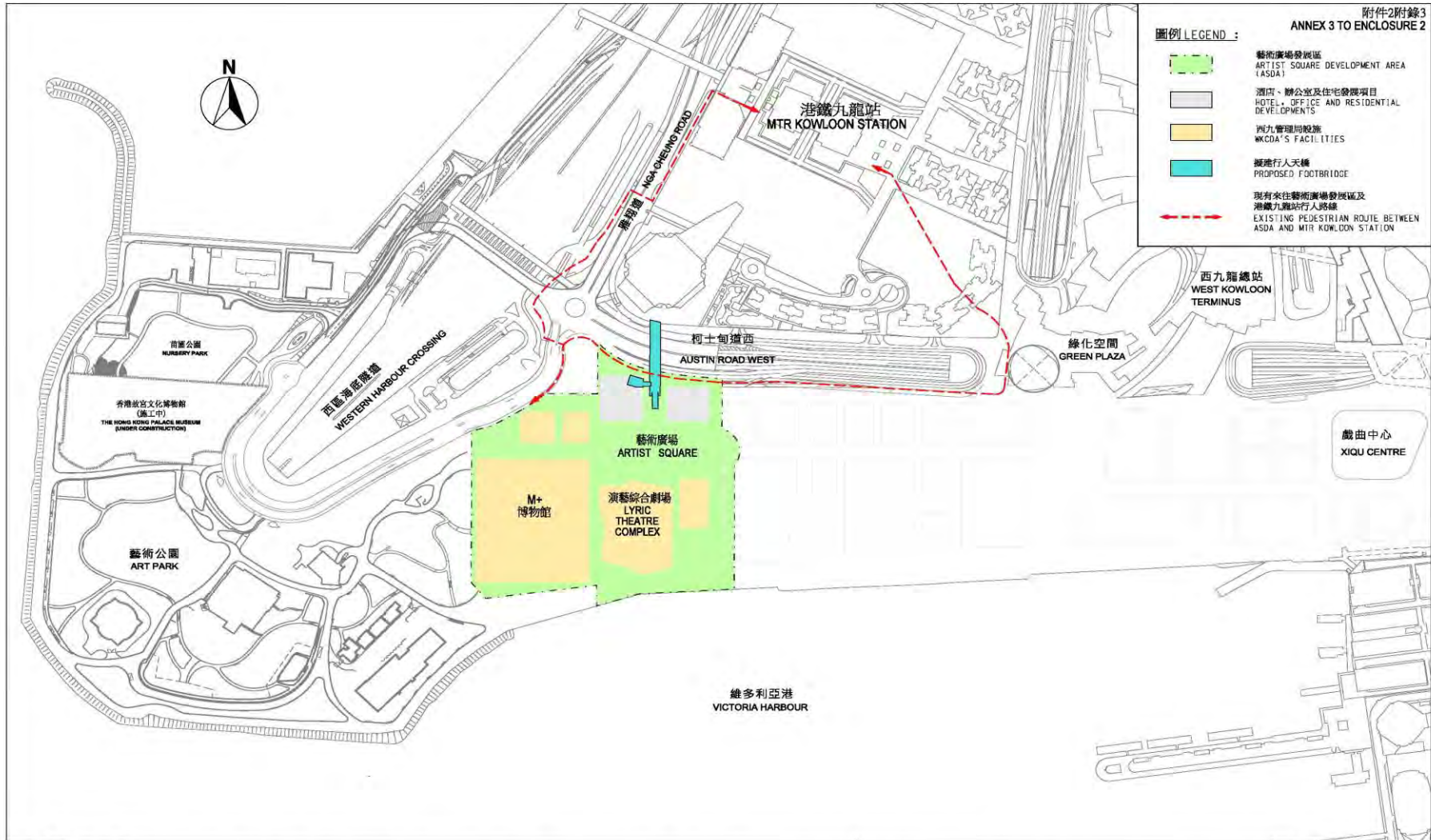
Private Car and Coach Parking Provision 私家車和旅遊巴士停泊設施



Pedestrian Connection Network 行人連接網絡



Artist Square Bridge 藝術廣場行人天橋



附件2附錄3
ANNEX 3 TO ENCLOSURE 2

圖例 LEGEND :

- 藝術廣場發展區
ARTIST SQUARE DEVELOPMENT AREA (ASDA)
- 酒店、辦公室及住宅發展項目
HOTEL, OFFICE AND RESIDENTIAL DEVELOPMENTS
- 西九管理層設施
WKCD'S FACILITIES
- 擬建行人天橋
PROPOSED FOOTBRIDGE
- 現有來往藝術廣場發展區及港鐵九龍站行人路線
EXISTING PEDESTRIAN ROUTE BETWEEN ASDA AND MTR KOWLOON STATION

項目名稱 PROJECT TITLE
7754CL號(部分) - 西九文化區基礎建設工程第一期 - 第三組建造工程
7754CL(PART) - INFRASTRUCTURE WORKS FOR WEST KOWLOON CULTURAL DISTRICT,
PHASE 1 - THIRD CONSTRUCTION PACKAGE

藝術廣場發展區
ARTIST SQUARE DEVELOPMENT AREA

比例 SCALE
不按比例
Not to scale

Artist Square Bridge 藝術廣場行人天橋

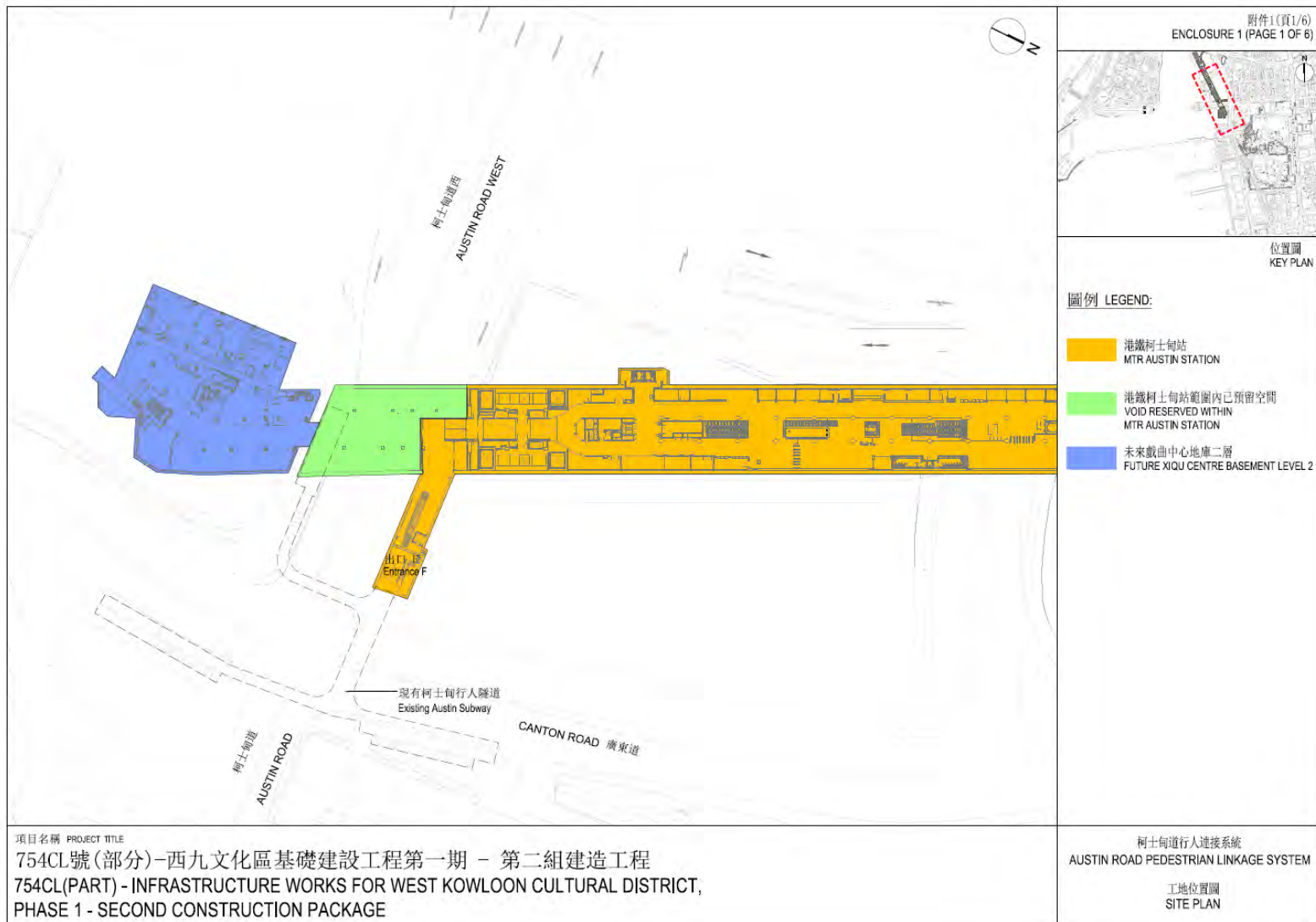


Pedestrian Connection Network 行人連接網絡



Austin Road Pedestrian Linkage System

柯士甸道行人連接系統



Austin Road Pedestrian Linkage System 柯士甸道行人連接系統



Autonomous Vehicle 電動智能自動車



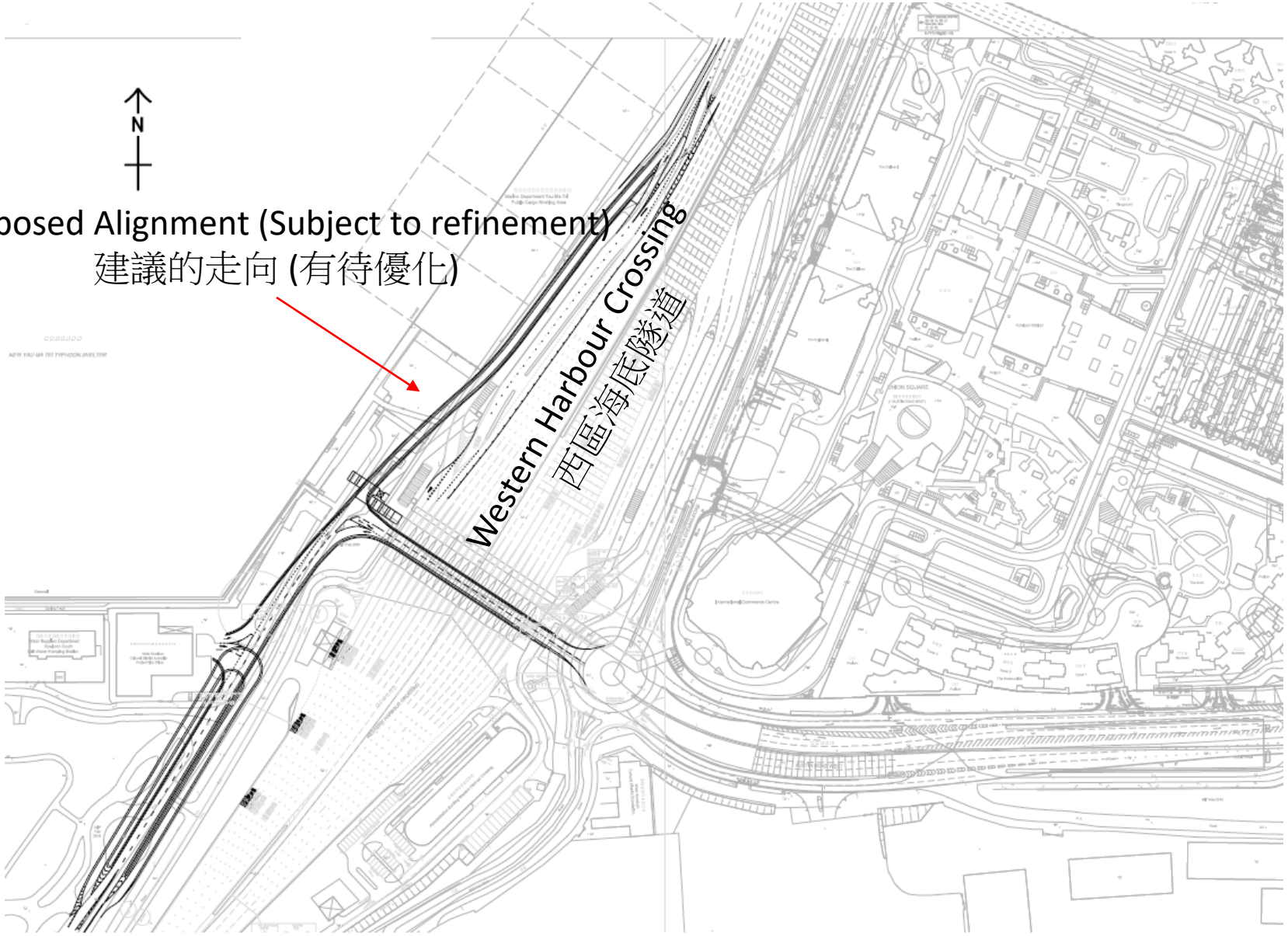
New Exit Road 新出口行車道



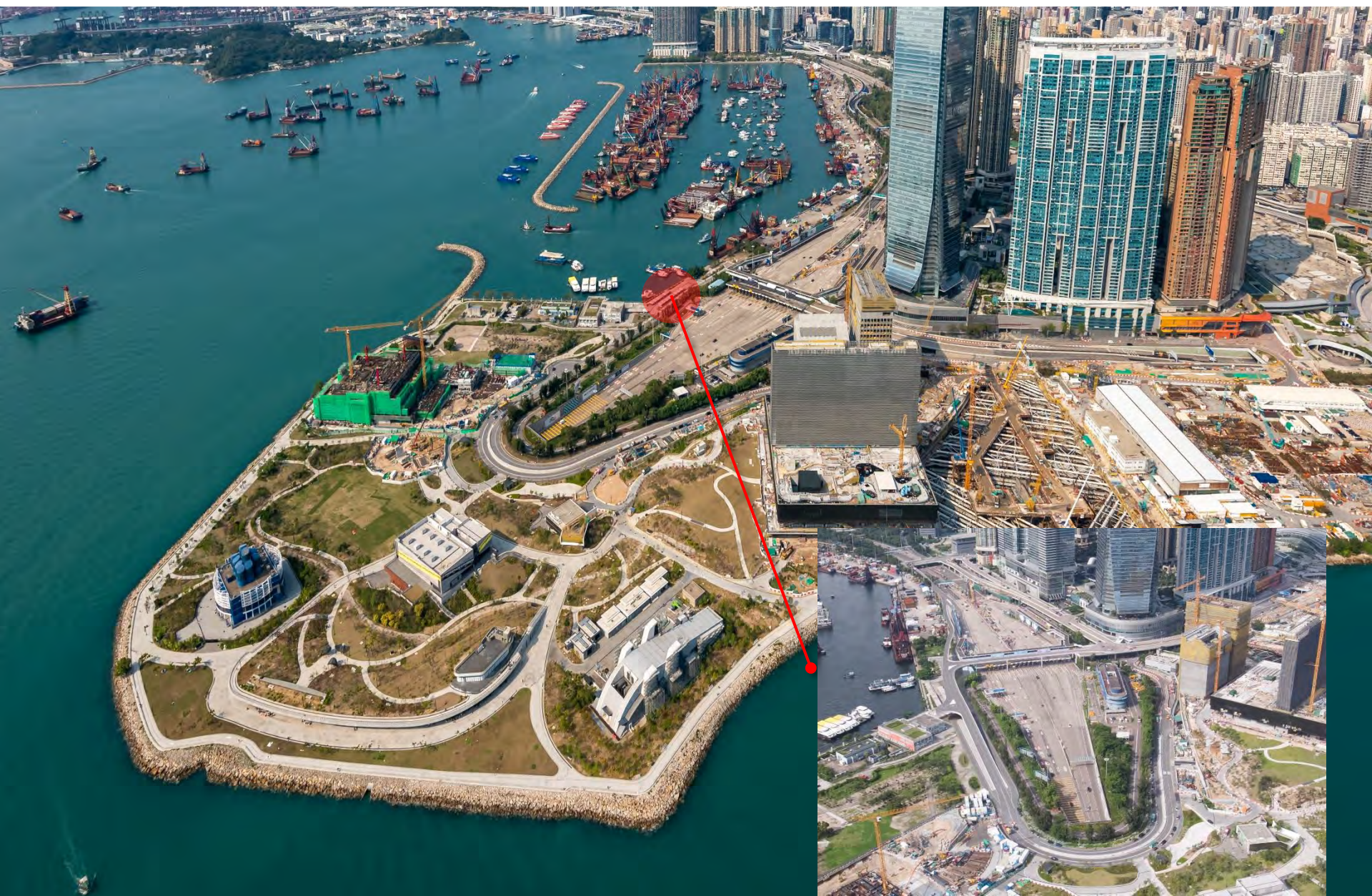
Proposed Alignment (Subject to refinement)
建議的走向 (有待優化)



Western Harbour Crossing
西區海底隧道



New Exit Road 新出口行車道



Landing Facilities (Targeted Completion: 2022/2023)

水上登岸設施 (目標落成: 2022/2023年)



Existing Landing Steps
現有登岸梯級

Northern Marine
Access Point
北面水上登岸點

Southern Marine
Access Point
南面水上登岸點



An aerial photograph of a city waterfront, likely Hong Kong. The image shows a dense urban area with numerous skyscrapers, including a prominent one on the left. A large body of water is visible on the right, with several ferries and boats. In the foreground, there is a large construction site with yellow cranes and partially completed buildings. The text "Thank you" and "謝謝" is overlaid in the center.

Thank you
謝謝