

## **For Information**

### **Legislative Council Panel on Education**

#### **Annual Progress Report on Implementation of the Hostel Development Fund**

#### **Purpose**

This paper reports to Members the progress on the implementation of student hostel projects funded under the Hostel Development Fund (HDF) as of June 2020.

#### **Background**

2. In July 2018, the Finance Committee (FC) of the Legislative Council (LegCo) approved a one-off grant of \$10,303.7 million for establishing the HDF for six University Grants Committee (UGC)-funded universities with a shortfall in hostel places to expedite the development of student hostels. The six universities are City University of Hong Kong (CityU), Hong Kong Baptist University (HKBU), The Chinese University of Hong Kong (CUHK), The Hong Kong Polytechnic University (PolyU), The Hong Kong University of Science and Technology (HKUST), and The University of Hong Kong (HKU). The HDF covers a total of 15 hostel projects of the universities concerned to provide 13 473 hostel places (see FCR(2018-19)35).

3. With the FC's approval, the UGC Secretariat signed service agreements with the universities concerned and disbursed in full the capital grants allocated to these universities. The first annual progress report on the implementation of the HDF was submitted to the LegCo Panel on Education in July 2019 (LC Paper No. CB(4)1123/18-19(01)) for Members' information.

#### **Implementation Progress**

4. The universities concerned are required to submit quarterly progress reports on the hostel projects to the Government until the completion and submission of the Statement of Final Accounts. So far, the universities have commenced construction works of four of the hostel projects which are scheduled for completion between 2022 and 2023. Details of the projects under construction based on the universities' latest reports are set out in Table 1 of Enclosure 1 for Members' information.

5. As for the remaining 11 hostel projects, the universities are gradually proceeding with the preparatory work (see Table 2 of Enclosure 1 for more information). In particular, the detailed design of three projects has been completed, namely –

- (a) CityU – Student Hostel at Whitehead, Ma On Shan (see Enclosure 2 for further details);
- (b) PolyU – Student Hostel at Ho Man Tin Slope (see Enclosure 3 for further details); and
- (c) HKUST – Halls 10 – 13 Student Residences (formerly known as “1 415-place Student Hostel”) (see Enclosure 4 for further details).

### **Way Forward**

6. Members are invited to note the latest implementation progress of the HDF. The UGC Secretariat will continue to monitor the progress. Annual progress reports will be submitted to Members.

**Education Bureau  
University Grants Committee Secretariat  
June 2020**

**Progress of Student Hostel Projects under the HDF  
(as of June 2020)**

**Table 1 - Hostel projects for which construction works have commenced**

<b>University</b>	<b>Hostel Project</b>	<b>Capital Grant Disbursed under HDF (\$ million) (MOD)</b>	<b>Number of Hostel Places to be provided</b>	<b>Commencement of Construction Works</b>	<b>Projected Completion Date</b>
HKBU	Hostel Complex at 30 Renfrew Road, Kowloon Tong	1,161.598	1 726	February 2019	October 2023
CUHK	300-place Student Hostel at New Asia Campus	196.425	300	June 2019	June 2022
HKU	Student Residence at Wong Chuk Hang Site	817.552	1 224	August 2019	November 2023
	Student Residence at Mui Fong Street	164.580	250	May 2019	April 2022

**Table 2 - Hostel projects for which construction works have yet to commence**

University	Hostel Project	Capital Grant Disbursed under HDF (\$ million) (MOD)	Number of Hostel Places to be provided	Target Works Commencement Date	Target Completion Date
CityU	Student Hostel at Whitehead, Ma On Shan (see <a href="#">Enclosure 2</a> )	1,445.828	2 168	Mid-2021 (tentative)	Mid-2025 (to be reviewed)
	Student Hostel at Tat Hong Avenue, Kowloon Tong	992.007	999	October 2023	October 2027
CUHK	250-place Student Hostel at United Campus	168.250	250	January 2022	December 2024
	300-place Student Hostel at Shaw Campus	201.900	300	January 2022	December 2024
	300-place Student Hostel at Chung Chi Campus	201.900	300	January 2023	December 2026
	250-place Student Hostel at Wu Yee Sun Campus	168.250	250	July 2023	June 2027
	394-place Student Hostel in Area 39	265.162	394	July 2023	June 2027
PolyU	Student Hostel at Ho Man Tin Slope (see <a href="#">Enclosure 3</a> )	1,268.405	1 279	Second half of 2020	July 2026
	Student Hostel at Tat Hong Avenue, Kowloon Tong	1,668.240	1 680	April 2023	October 2027
HKUST	Halls 10 - 13 Student Residences (formerly known as "1415-place Student Hostel") (see <a href="#">Enclosure 4</a> )	952.295	1 551  (1 415 places funded by HDF plus 136 additional privately-funded places)	July 2020	June 2023
HKU	Student Residence at High West Site	631.274	938	November 2020	May 2024

**City University of Hong Kong (CityU)  
Student Hostel at Whitehead, Ma On Shan**

The project site is located at Whitehead in Ma On Shan. The scope of works includes the construction of three multi-storey hostel blocks with a net operational floor area (NOFA)<sup>1</sup> of around 24 285 square metres (m<sup>2</sup>), comprising –

- (a) a total of **2 168 student hostel places** with a NOFA of around 17 400 m<sup>2</sup>, including accommodation for wardens, tutors, managers and staff;
- (b) **common facilities** with a NOFA of around 6 135 m<sup>2</sup>, including canteen, recreational spaces, multi-function hall, gymnasium, function rooms and common rooms; and
- (c) **supporting facilities** with a NOFA of around 750 m<sup>2</sup>, including management office, laundries, kitchens and store rooms.

2. The handover of the site by the Government to CityU has been deferred to allow more time for the relocation of the existing tenant. CityU now aims to commence the construction works in mid-2021 for completion by mid-2025. The target completion date will be reviewed and revised as necessary upon site possession by CityU and commencement of the construction works.

3. The site plan, sectional plan and artist's impression of the project are at Annexes A, B and C to Enclosure 2 respectively.

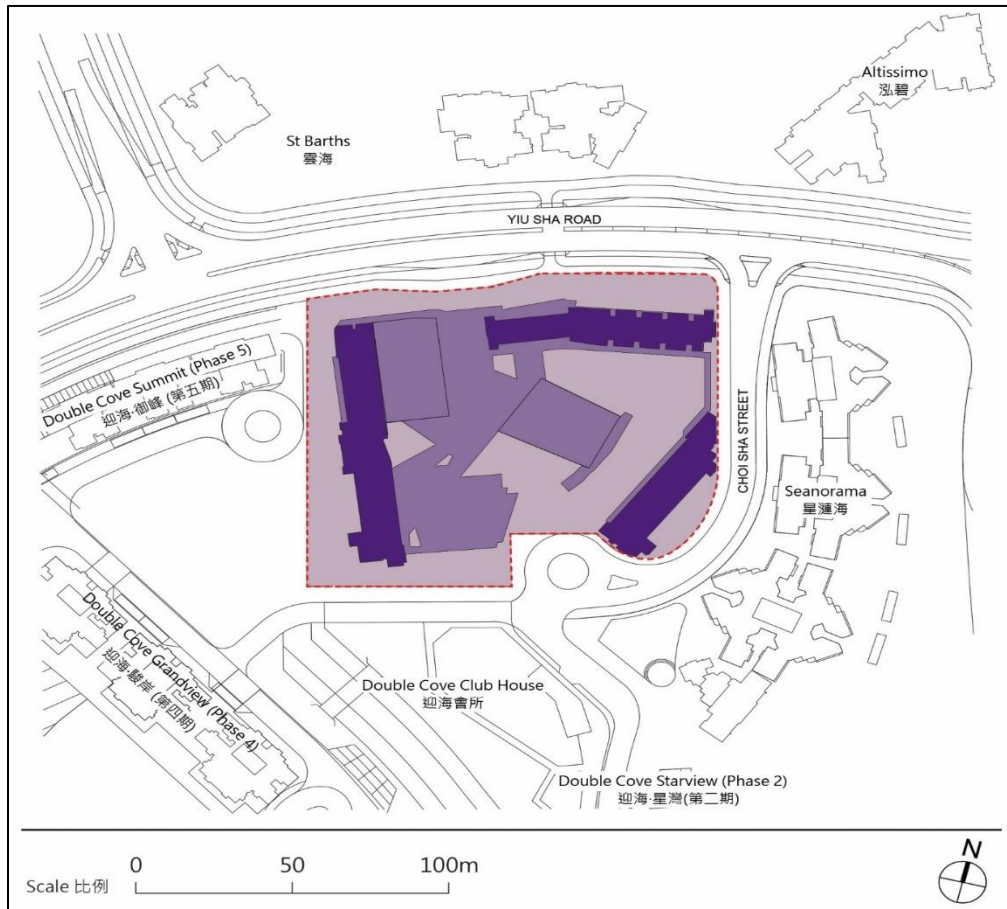
---

<sup>1</sup> NOFA is the floor area actually allocated to the users of a building for carrying out the intended activities. Unlike the construction floor area which takes into account all areas within the building structure envelop, NOFA does not include areas for such facilities (if any) as toilets, bathrooms and shower rooms, lift lobbies, stair halls, public or shared corridors, stairwells, escalators and lift shafts, pipe or services ducts, barriers-free access facilities, gender mainstreaming facilities, refuse chutes and refuse rooms, balconies, verandas, open decks and flat roofs, parking spaces, loading and unloading areas and mechanical plant rooms, etc.

**City University of Hong Kong  
Student Hostel at Whitehead, Ma On Shan**

香港城市大學  
馬鞍山白石學生宿舍

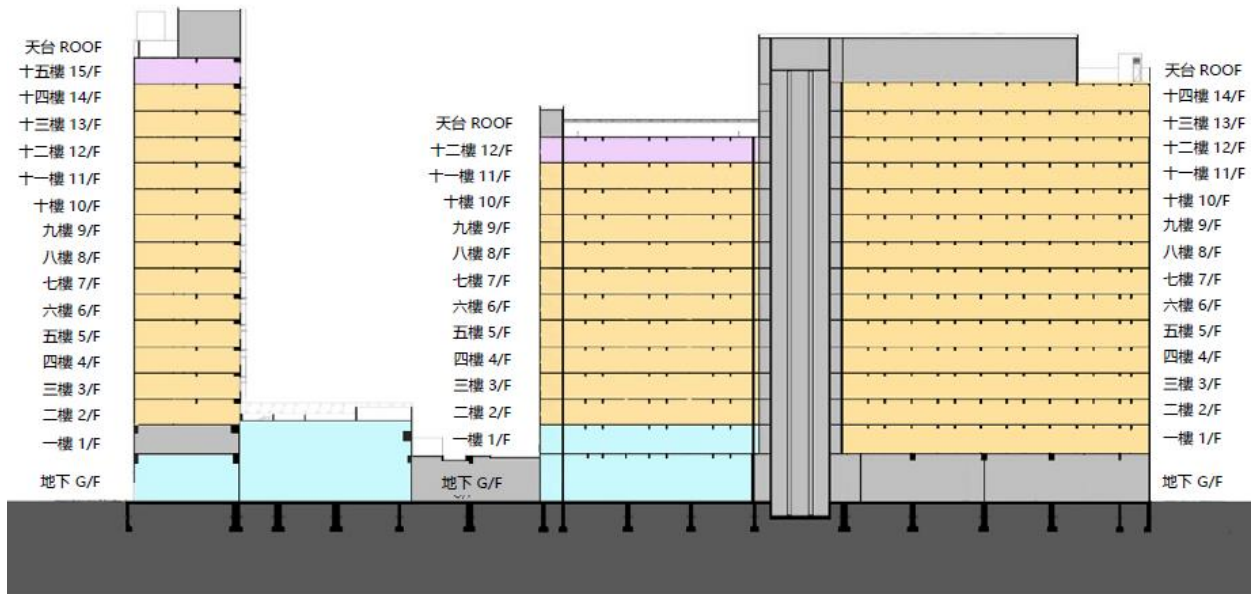
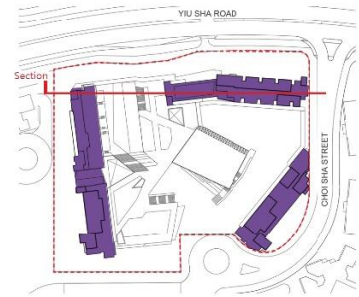
Site Plan 工地平面圖



The City University of Hong Kong  
Student Hostel at Whitehead, Ma On Shan

香港城市大學  
馬鞍山白石學生宿舍

Sectional Plan 截面圖



圖例 LEGEND

-  學生宿舍  
Student Bedrooms
-  舍監和導師宿舍  
Warden & Managers' quarters
-  共用設施  
Common Facilities
-  停車場/建築設備和機房  
Car Park, Back of House & Plant Rooms

**The City University of Hong Kong  
Student Hostel at Whitehead, Ma On Shan**

香港城市大學  
馬鞍山白石學生宿舍

**View of the buildings from the southeast (artist's impression)**  
從東南面望向建築物外觀構思圖





**The Hong Kong Polytechnic University (PolyU)  
Student Hostel at Ho Man Tin Slope**

The project site is located at a slope near the junction of Chung Hau Street and Oi Sen Path in Ho Man Tin. The proposed scope of works includes the construction of a multi-storey hostel block with a NOFA of around 16 781 m<sup>2</sup>, comprising –

- (a) a total of **1 279 student hostel places** with a NOFA of around 12 009 m<sup>2</sup>, including accommodation for wardens, tutors, managers and staff;
- (b) **common facilities** with a NOFA of around 4 280 m<sup>2</sup>, including canteen, multi-purpose rooms, common rooms, pantries, music rooms, sport and recreation rooms; and
- (c) **supporting facilities** with a NOFA of around 492 m<sup>2</sup>, including management office, refuse room and store rooms.

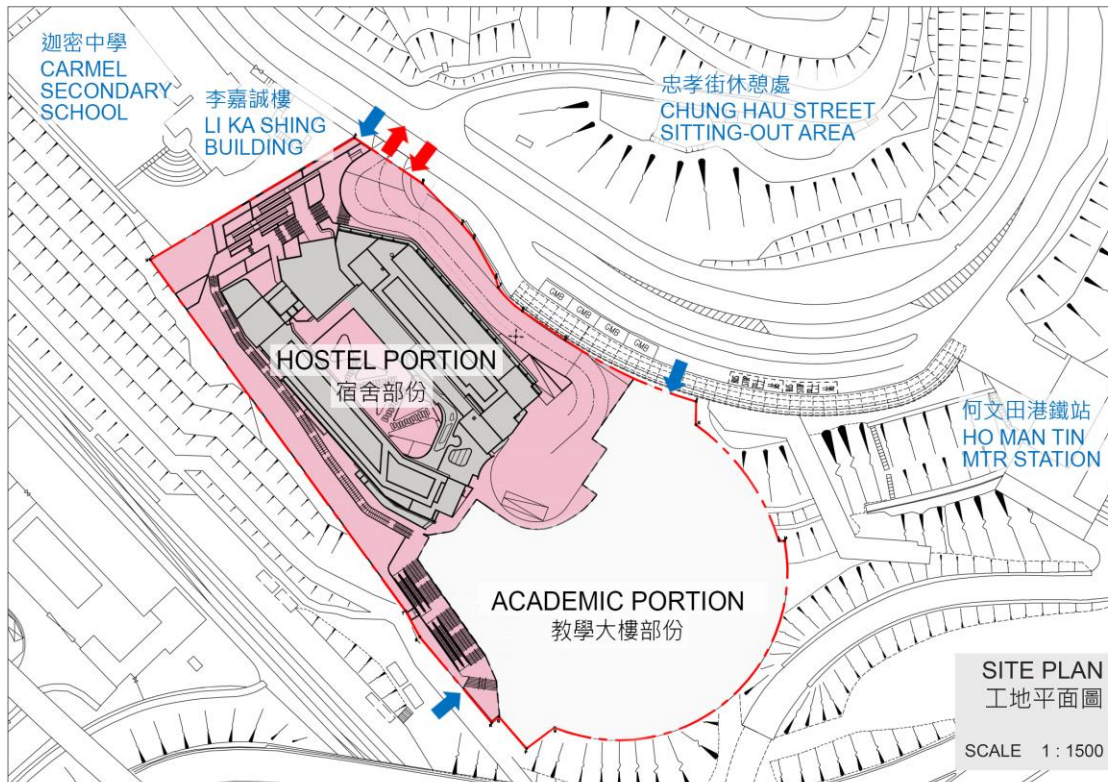
2. The project is part of a hostel-cum-academic complex development on a sloping site in Ho Man Tin, and the academic portion is funded separately under **30EK – Campus Expansion at Ho Man Tin Slope**. PolyU will conduct the site formation and foundation works for both academic building portion and student hostel portion by the same contractor to achieve better interfacing between the two portions. Taking into account the latest programme of **30EK**, PolyU aims to commence the construction works in the second half of 2020 for completion of the hostel portion by July 2026.

3. The site plan, sectional plan and artist's impression of the project are at Annexes A, B and C to Enclosure 3 respectively.

The Hong Kong Polytechnic University  
Student Hostel at Ho Man Tin Slope

香港理工大學  
何文田斜坡學生宿舍

Site Plan 工地平面圖



圖例 LEGENDS

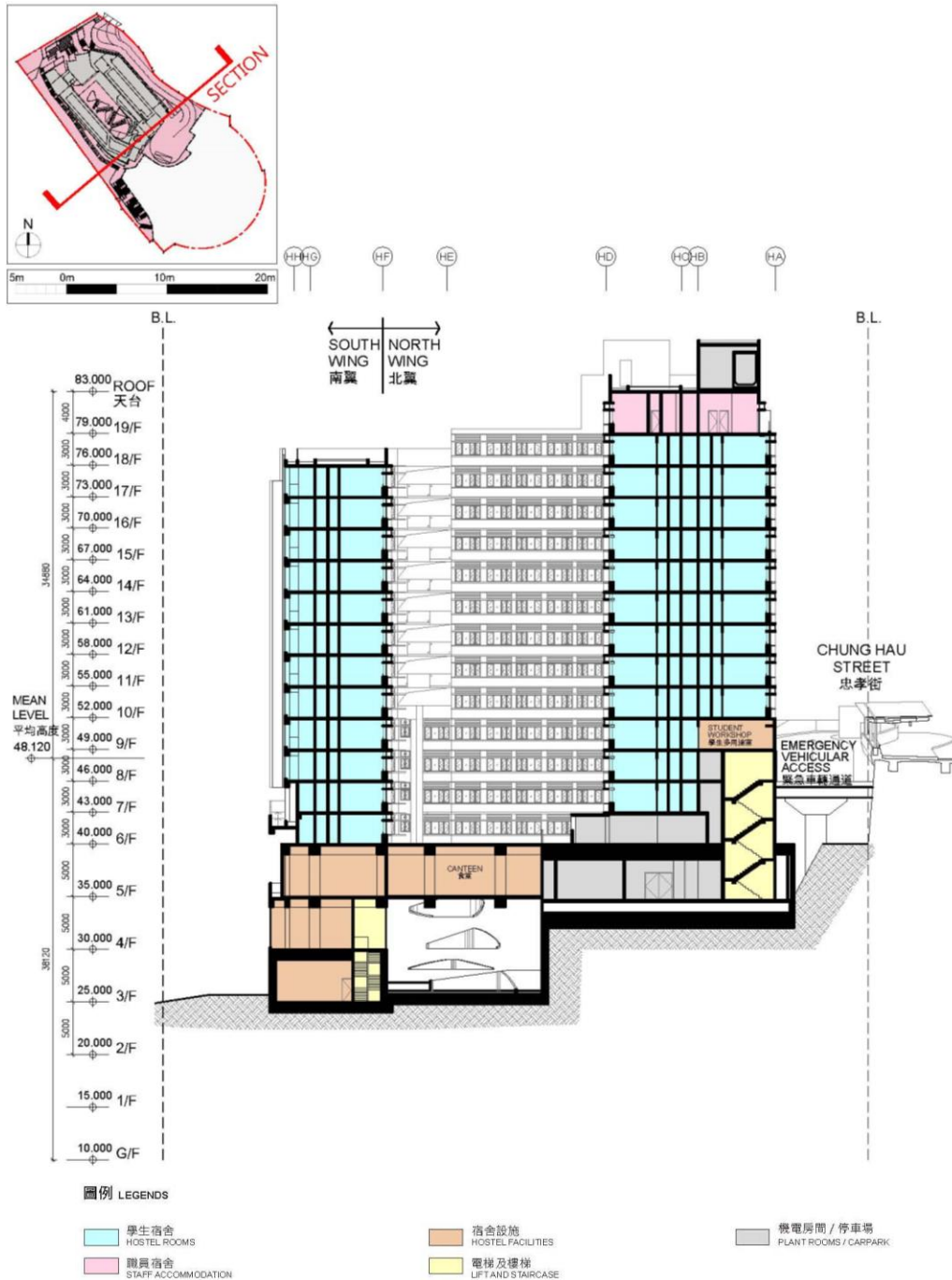
- 車輛出入口  
VEHICULAR INGRESS / EGRESS
- 行人出入口  
PEDESTRIAN ENTRANCE / EXIT
- 工地界線  
SITE BOUNDARY



The Hong Kong Polytechnic University  
Student Hostel at Ho Man Tin Slope

香港理工大學  
何文田斜坡學生宿舍

Sectional Plan 截面圖



**The Hong Kong Polytechnic University  
Student Hostel at Ho Man Tin Slope**

香港理工大學  
何文田斜坡學生宿舍

**View of the buildings from the northeast (artist's impression)**  
從東北面望向建築物外觀構思圖



**The Hong Kong University of Science and Technology (HKUST)**  
**Halls 10 – 13 Student Residences**  
*(formerly known as “1 415-place Student Hostel”)*

The project site is located within the Clearwater Bay Campus of HKUST. The scope of works includes the construction of a complex of four hostel blocks and a link bridge connecting with existing buildings of around 16 865 m<sup>2</sup> in NOFA. In addition to the 1 415 number of hostel places funded by the HDF, HKUST will deploy its private sources of funding to provide 136 additional student hostel places. The hostel complex (inclusive of the privately-funded additional places) comprises

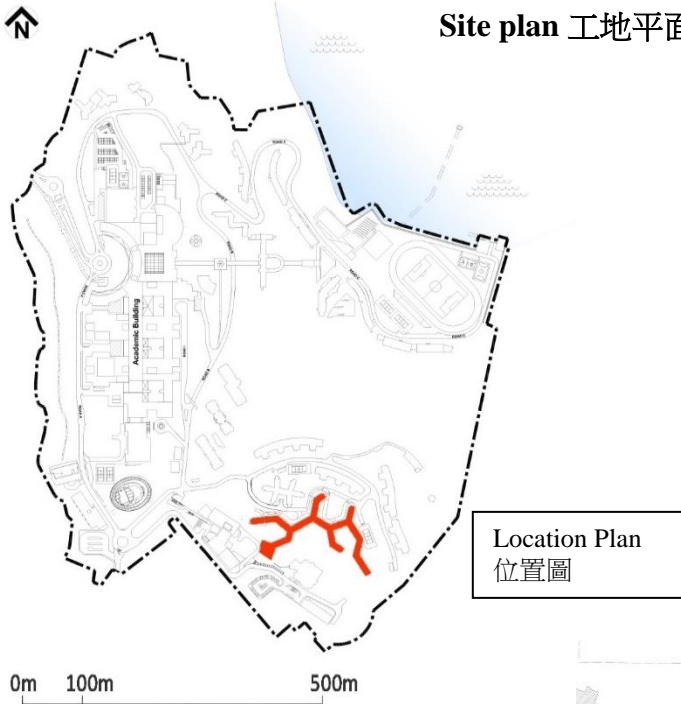
—

- (a) a total of **1 551 student hostel places** (i.e. 1 415 places funded by the HDF plus an additional 136 privately-funded places) with a NOFA of around 11 802 m<sup>2</sup>, including accommodation for wardens, tutors, managers and staff;
  - (b) **common facilities** with a NOFA of around 4 571 m<sup>2</sup>, including common room in each cluster, multi-purpose hall, communal kitchens and multi-purpose rooms; and
  - (c) **supporting facilities** with a NOFA of some 492 m<sup>2</sup>, including service counter and management office, attendant’s rooms, quarantine rooms, laundry rooms, security and store rooms.
2. HKUST plans to commence construction works in July 2020 for completion by June 2023.
  3. The location plan and site plan, sectional plan and artist’s impression of the project are at Annexes A, B and C to Enclosure 4 respectively.

The Hong Kong University of Science and Technology  
Halls 10 – 13 Student Residences

香港科技大學  
學生宿舍 10-13 座

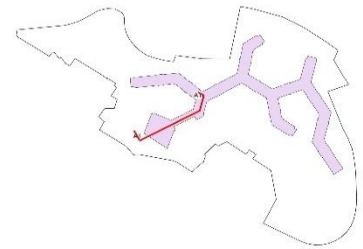
Site plan 工地平面圖



The Hong Kong University of Science and Technology  
Halls 10 – 13 Student Residences

香港科技大學  
學生宿舍 10-13 座

Sectional Plan 截面圖



LEGEND 圖例

- HOSTEL ROOMS 學生宿舍
- COMMON FACILITIES 宿舍設施
- MULTI-PURPOSE HALL 多用途會堂
- OFFICE 辦公室
- STAIRCASE AND LIFTS 樓梯及電梯
- PLANT ROOMS 機房

**The Hong Kong University of Science and Technology  
Halls 10 - 13 Student Residences**

香港科技大學  
學生宿舍 10-13 座

**View of the buildings from the north (artist's impression)**  
從北面望向建築物外觀構思圖

