

**For discussion
on 3 July 2020**

Panel on Health Services

**Subcommittee on Issues Relating
to the Development of Chinese Medicine**

Latest progress of the Chinese Medicine Development Fund

Purpose

This paper aims to brief and invite members to provide views on the latest progress of the Chinese Medicine Development Fund (CMDf).

Background

2. The Government announced the establishment of a \$500 million dedicated fund in the 2018-19 Budget to further promote and facilitate the development of Chinese medicine (CM). We aim to enhance the overall standards of the industry by providing the CM and CM drug sectors with financial support, including nurturing talents for the CM industry and the CM Hospital (CMH), promoting CM-related scientific research, supporting local CM drug traders in improving the quality and standards of production, as well as registering their proprietary Chinese medicines (pCms) in accordance with statutory requirements, and enhancing public knowledge and understanding of CM.

3. The Food and Health Bureau established an Advisory Committee (AC) under the CMDf to advise and make recommendations to the Government on matters relating to the overall administration and operation of the CMDf. The AC is mainly responsible for formulating the application guidelines and procedures as well as assessment and funding criteria, assessing applications, specifying the terms and conditions for approved applications, and determining the amount of funding to be granted for such applications, etc. Non-official members of the AC are representatives of the sectors of CM, CM drugs, testing and certification, healthcare as well as experts, academics and lay persons with rich experience in business management and public administration. The Hong Kong Productivity Council (HKPC) is the implementation agent of the CMDf and provides secretariat service for the AC to support its operation.

4. Funding schemes under the CMDf were drawn up after consultation with the CM Development Committee and taking into account the views from the industry. There are two schemes under the CMDf, namely the Enterprise Support Programme (A Scheme) and the Industry Support Programme (B

Scheme). The A Scheme provides matching funds for individual CM practitioners (CMPs) and CM clinics, members of the CM drug industry and CM drug manufacturers/traders to enhance the manufacturing and management qualities as well as support them in registering their pCms in accordance with statutory requirements. These include offering technical and hardware support to pCms manufacturers with a view to reaching the Good Manufacturing Practices (GMP) standards. The B Scheme provides subsidies for non-profit-making organisations, professional bodies, trade and academic associations and research institutions to organise training programmes and courses to nurture talents needed by the CMH and facilitate the development of CM, conduct applied studies or research on CM, and organise various CM promotional activities, etc. In addition, a CM resources platform has been established under the CMDF to consolidate reference materials on CM and CM drugs so as to provide a variety of resources to facilitate information exchange and development of the industry. For details of the operating structure and overall framework of the CMDF, please refer to **Annex 1**.

Latest Progress

5. The CMDF was officially launched on 25 June 2019. Most of the funding schemes under the CMDF have been rolled out in phases (please refer to **Annex 2** for the overall summary and funding details of individual schemes). The implementation timetable of the various schemes is shown below (listed according to the time of implementation):

	Funding Scheme	Sub-category	2019-20				
			2019 Q2	2019 Q3	2019 Q4	2020 Q1	
Technical Support	CM Resources Platform		Jun				
Financial Support	ISP	CM Industry Training Funding Scheme & CM Promotion Funding Scheme (B1)	Jun				
		CM Applied Studies and Research Funding Scheme (B2)	Jun				
	ESP	pCm Registration Supporting Scheme (A3)			Sep		
		CM Personal Training and CM Clinic Improvement Funding Scheme (A1)	Training Courses recognised under the Qualifications Framework			Dec	
			Training Courses with Assessment			Dec	
			General Training Courses				Mar
		CM Clinic Improvement Funding Scheme					Mar
		pCm Quality and Manufacturing System Enhancement Funding Scheme (A2)					Mar
CM Warehouse Management, Logistics and Services Improvement Funding Scheme (A4)					Not yet launched		

CM Personal Training and CM Clinic Improvement Funding Scheme (A1 Scheme)

6. To enhance the professional capabilities of members of the CM industry and improve the software and hardware facilities in CM clinics to support relevant clinical operations, the A1 Scheme provides funding for CMPs and persons engaged in the CM drug industry to attend eligible programmes, which include training courses recognised under the Qualifications Framework, training courses with assessment or issuance of certificate upon completion and continuing education programmes on CM (e.g. Continuing Medical Education (CME)). The CMDF also provides funding for local CM clinics to improve their facilities. The A Scheme comprises the CM Individual Training Scheme (A1-1, A1-2 and A1-3 Schemes) and the CM Clinics Improvement Funding Scheme (A1-4 Scheme).

7. The AC will pre-approve the training courses recognised under the Qualifications Framework (A1-1 courses) and the training courses with assessment (A1-2 courses) to compile a list of related courses for application by eligible persons. Applicants for general training courses (A1-3 courses) related to CMP training can directly enroll in these courses after successful registration. Application for registration to become courses providers for this scheme opened in December 2019, and applications from industry members opened in April 2020.

8. As at 31 May 2020, the implementing agent has received over 70 applications for registration of courses and most of them are being processing. Among these applications, 21 applications have been approved. The implementing agent has also received over 100 applications from CMPs and persons engaged in CM drug industry, among which 18 applications have been approved with funding involving more than \$1 million.

9. The A1-4 Scheme mainly provides funding for eligible CM clinics to enhance their medical record system, improve clinical operations in the areas of safety and hygiene, and provide better quality CM services to the public. Application must comply with the funding principles, including the requirement that items under the application must be included in the “List of Eligible Clinic Facilities Items”. The scheme was launched in March 2020. As at 31 May 2020, the implementing agent has received a total of 204 applications, most of which are undergoing the vetting process. Among these applications, 10 applications have been approved with funding involving about \$140,000.

pCm Quality and Manufacturing System Enhancement Funding Scheme (A2 Scheme)

10. The A2 Scheme mainly provides funding to pCm manufacturers such that they may receive technical and hardware support with a view to reaching GMP standards. The CMDF provides funding for pCm manufacturers to engage professional consultants (i.e. service providers) to obtain professional advice on GMP certification in respect of pCm production. The consultant may, inter alia, conduct basic assessments concerning obtaining GMP certification, gap analysis, provide advice and support in respect of application proposals, plant engineering design, additional equipment requirements, establishment of manufacturing practice and standard operating procedures, etc.

11. The A2 Scheme was open for application from service providers for registration in March 2020. The implementing agent is currently reviewing relevant applications and application by pCm manufacturers would be open once the approved list of service providers has been compiled.

pCm Registration Supporting Scheme (A3 Scheme)

12. To safeguard public health, the Department of Health has implemented the registration system for pCm since 2003. In the process of applying for pCm registration, the industry has asked for more support in submitting the required documents and obtaining the necessary testing services. In this connection, the A3 Scheme mainly provides support for eligible local licensed pCm manufacturers or wholesalers in respect of their application of Certificate of Registration of pCm (HKC). The scheme provides subsidy to applicants for engaging professional consultants (i.e. service providers) to provide professional advice, collect and compile general information, safety information, effectiveness information and quality information, etc. and to conduct the necessary testing in order to meet the requirements in obtaining the HKC. The scheme aims to provide support to pCm manufacturers the pCms of which have been issued the “Notice of Confirmation of Transitional Registration of pCm” (HKP) such that they may obtain the HKC as soon as possible.

13. The A3 Scheme was launched in September last year. As at 31 May 2020, the implementing agent has received a total of applications concerning 382 pCm products. Among these applications, funding in respect of 152 pCms have been approved, involving more than \$2 million.

CM Warehouse Management, Logistics and Services Improvement Funding Scheme (A4 Scheme)

14. The A4 Scheme mainly provides funding for eligible wholesalers and retailers of Chinese herbal medicines (Chm) to purchase related equipment to enhance the efficiency and safety of the handling, storage and transportation of Chm and provide better quality CM services to the public by Chm retailers. The implementing agent is finalising the details of the scheme and liaising with the industry on the scheme details. It is expected that the scheme would be rolled out for application by the industry in the second half of 2020.

CM Industry Training Funding Scheme & CM Promotion Funding Scheme (B1 Scheme)

15. Nurturing and building a pool of high-calibre CM talents and enhancing the public's knowledge of CM are of vital importance for the long-term development of CM in Hong Kong. The scheme provides funding for non-profit-making organisations, relevant institutes/societies, trade associations and universities to organise CM training courses, seminars or workshops, and various CM promotional activities. The B1 Scheme comprises the B1-1 Scheme and the B1-2 Scheme.

16. The B1-1 Scheme covers a variety of activities, for example, training courses, workshops and seminars, with a view to addressing the inadequacies of the existing courses in the market having regard to the development of CM in Hong Kong, in order to cultivate talents in the CM industry, improve the professional knowledge level of the industry, and demonstrate standards of good practice in the industry. The B1-2 Scheme provides funding to eligible organisations to organise different activities to promote CM to the public, such as mobile exhibitions, exhibitions, promotional events, video filming, computer/mobile phone applications development, to showcase the latest development of the industry and promote public awareness of CM. Taking into consideration of the views of the industry and having sought approval from the AC, the implementing agent recommended a list of priority themes under the B1-1 Scheme and the B1-2 Scheme as a basis for vetting the applications and resource allocation. As at 31 May 2020, the implementing agent has received a total of 73 applications for the B1 Scheme. Among these applications, 13 applications (6 training projects under the B1-1 Scheme and 7 promotional projects under the B1-2 Scheme) have been approved by the AC, involving around \$9 million. The approved training programmes concern hospital management, inheritance of traditional CM, clinical application of CM drugs and training for specialised disease treatment. The approved promotion projects concern on-campus promotion, picture book production, topical conferences and lectures.

CM Applied Studies and Research Funding Scheme (B2 Scheme)

17. Studies and researches on a variety of topics are essential for the development of CM, so as to help promote CM development in terms of academic and clinical services and provide a basis for formulation of the CM policy. The scheme provides funding for non-profit-making organisations, relevant institutes/societies, trade associations, universities and research institutions to conduct studies and research for the promotion of CM development in Hong Kong.

18. The B2 Scheme covers research projects of different types and scale, for example, CM technology applied studies and industry research, to promote the overall development of the CM industry. In addition, the scheme supports research projects that relatively few organisations conduct or are yet to be supported by other funds, such as research on traditional CM. Taking into consideration the views of the industry and having sought approval from the AC, the implementing agent recommended a list of priority themes as a basis for vetting the applications and resource allocation. As at 31 May 2020, the implementing agent has received a total of 83 applications for the B2 Scheme. Among these applications, 11 applications have been approved by the AC, involving around \$10 million. The approved research projects include research on the professional certification system of CM pharmacists and persons engaged in the CM drug industry, research on the use of CM by the public, clinical research on CM, and research on the processing technology of CM, etc.

CM Resources Platform

19. The CM Resources Platform (<http://www.CMresource.hk>) under the CMDF provides additional support and services for the CM industry. It provides a comprehensive CM archive, an online electronic information platform, an enquiry hotline for pCm registration and an online advisory service. The electronic information platform integrates different CM industry information, including clinical academic journals and reference books, procedures for application for pCm registration, requirements for obtaining GMP manufacturer certificates, Chm market trends and database links, and CM policies and respective requirements in the Mainland, etc.

20. The resources platform mainly targets individuals working in the CM industry, including CMPs, persons engaged in the CM drug industry, applicants for pCm registration, applicants for GMP manufacturer certificates, people in the CM industry who intend to explore the Mainland market, pCm manufacturers, wholesalers, etc.

21. The resources platform has commenced operation since June 2019. Books purchased and collected including through donations from different people are available in the integrated archive which currently provides up to 24 sets of medical reference standards books of different places (including the Pharmacopoeia of the People's Republic of China 2020) for registered members' reference. Moreover, the resources platform has made available two databases with highest usage ("Wanfang Data Home" and "China Knowledge Resource Integrated Database") to resources platform members. The implementing agent has all along been collecting and keeping in view the usage data and opinions of the user groups so as to provide reference for continual enrichment of the resources platform information.

COVID-19-Related Funding Schemes

22. To enhance the role of the CM sector in our anti-epidemic efforts, particularly in relation to prevention and rehabilitation treatment, and to raise the capability of CMPs in areas such as clinical work, disease prevention/control and infection control, the CMDF has specifically included the "Novel Coronavirus Epidemic Related Projects" as a priority area under the B1 Scheme and the B2 Scheme. Special arrangements have also been made in order to expedite the approval of such applications. As at 31 May 2020, the CMDF has received a total of 33 COVID-19-related applications. Among these applications, 8 applications were approved by the AC involving over \$6 million.

23. To encourage the enhancement of infection control facilities in CM clinics to safeguard the health of staff and patients of CM clinics, and to respond to the current epidemic situation, the CMDF has also expanded the scope of the A1-4 Scheme in order to subsidise the enhancement of infection control facilities in CM clinics. In addition, subsidy to procure related facilities will be provided to CM clinics under non-profit organisations/academic institutions providing CM rehabilitation treatment plans for patients discharged from hospital after receiving COVID-19 treatment.

Publicity and Promotional Arrangements

24. A launching ceremony was held by the implementing agent on 25 June 2019 to announce the official launch of the CMDF and to introduce the schemes to the industry. All of the schemes launched and the details of approved projects have been uploaded onto the CMDF website (<http://www.CMDevFund.hk>). Moreover, the implementing agent has set up two dedicated telephone hotlines for the CMDF and the CM resources platform respectively. Advertisements on CM publications are placed quarterly. Leaflets/pamphlets will also be produced and promotion via Facebook or other social/online media will continue so as to promote the CMDF to stakeholders.

25. Since the implementation of the CMDF, the implementing agent has been organising sharing sessions quarterly to brief the CM industry stakeholders on the latest information of different schemes under the CMDF before the quarterly application deadlines. The implementation agent also arranges consultation sessions for individual enterprises to respond to their enquiries on application for the funding schemes. Moreover, the implementing agent actively maintains contact and participates in activities organised by the CM industry in order to brief the stakeholders on the latest information on the CMDF and its schemes.

Financial Arrangement

26. The actual annual funding allocation and operation period of the CMDF depends on the number of applications and the amount of funding approved. The AC regularly reviews the financial arrangements of the fund in response to market conditions and the industry's needs. According to the preliminary statistics prepared by the implementing agent, the total expenditure for 2019-20 is about \$30 million, and the total funding requirement for 2020-21 is about \$150 million.

Review Mechanism

27. The implementing agent submits an operation report to the AC on a quarterly basis, covering the progress of receiving funding applications and monitoring project implementation, difficulties encountered during implementation and proposed solution, financial positions and resources allocation. Apart from the four quarterly reports, the implementing agent is required to submit a yearly report which includes the audited annual accounts prepared by independent auditor, as well as evaluation on publicity and promotion, market development and related activities and the corresponding adjustments as appropriate.

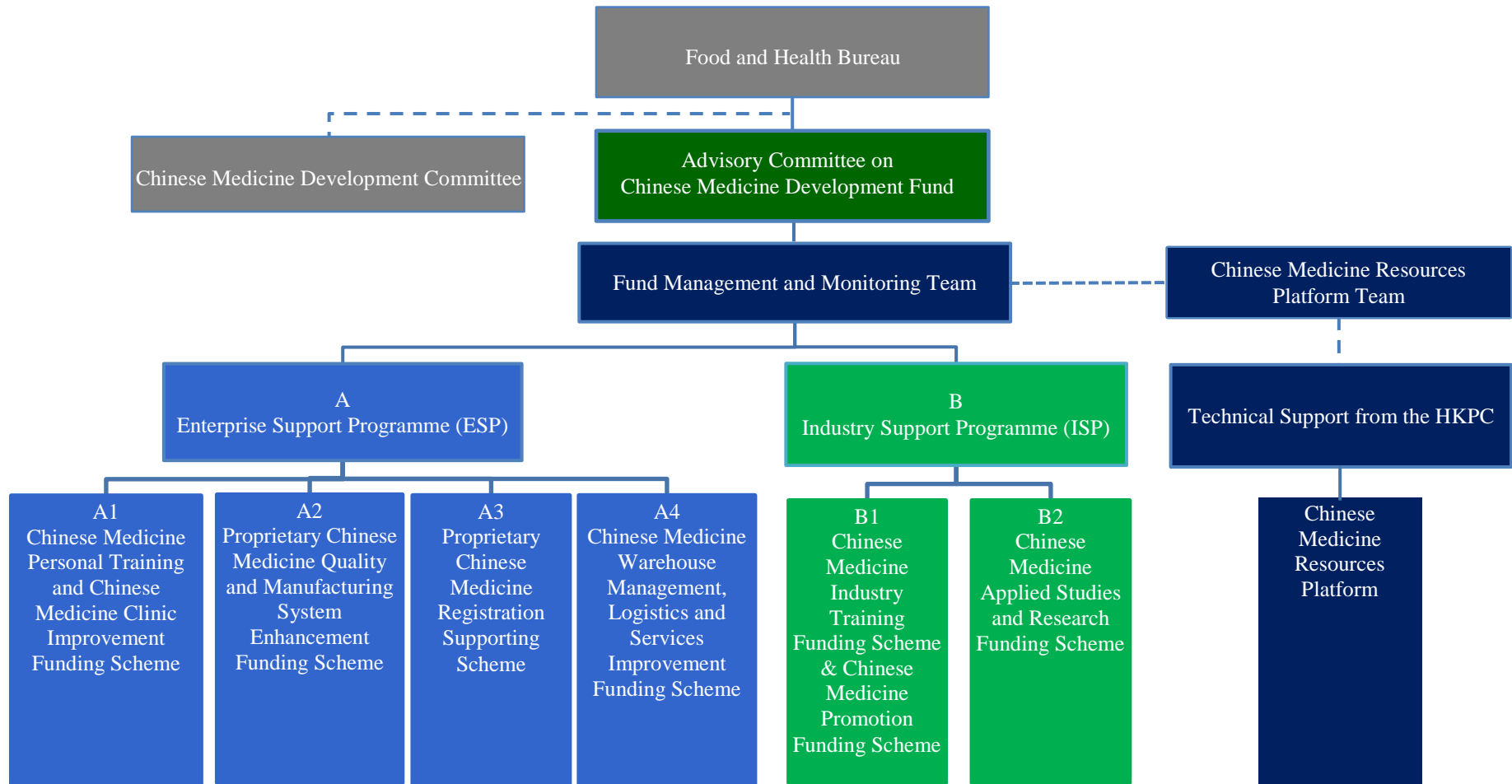
28. The AC and the implementing agent have all along maintained close communication with the CM industry and relevant stakeholders so as to understand the latest market development, views from the CM industry and the public on the operation of CMDF in a timely manner. In addition, in order to facilitate the CM industry and the public's understanding of the operation of the CMDF and to enhance transparency, the implementing agent has already uploaded the application procedures, vetting principles and information on approved projects onto the CMDF website.

Advice Sought

29. Members are invited to note and comment on this paper.

Food and Health Bureau
July 2020

Operating Structure and Overall Framework of the CMDF



* Updates will be made and other items be added when necessary

Chinese Medicine Personal Training Funding Scheme (A1-1、A1-2、A1-3 Scheme)

Objective	<p>The scheme aims to provide financial subsidy to CMPs and persons engaged in CM drug industry to enroll in approved courses to enhance their professional capabilities. The scheme will cover the following types of courses:</p> <ul style="list-style-type: none"> • Training Courses recognised under the Qualifications Framework (A1-1 Courses) • Training Courses with Assessment (A1-2 courses) • General Training Courses (A1-3 courses) 		
Targets	<ul style="list-style-type: none"> • CMP – a registered or listed CMP under CM Ordinance (Cap. 549) with valid practicing certificate. • A person engaged in CM drug industry – an employee of CM drug trader which holds licence for Chinese herbal medicine retail / wholesale, pCm wholesale/ manufacturing under CM Ordinance or a CM drug worker of a CM clinic. The applicant has to engage in CM drug related work and possesses relevant background/ experience. 		
	Training Courses recognised under the Qualifications Framework (A1-1 Course)	Training Courses with Assessment (A1-2 Course)	General Training Courses (A1-3 Course)
Criteria for funding (Training courses for CMPs)	<ul style="list-style-type: none"> • Fulfil the requirements of Continuing Education in Chinese Medicine (CME) for Registered CMPs set out by the Chinese Medicine Practitioners Board (PB) of the Chinese Medicine Council of Hong Kong (CMCHK) • Levelled as 4 or above under the Hong Kong Qualifications Framework (HKQF) (e.g. higher diploma or above) 	<ul style="list-style-type: none"> • Fulfil the requirements of CME for Registered CMPs set out by PB of CMCHK • Include “appropriate assessments” 	<ul style="list-style-type: none"> • Fulfil the requirements of CME for Registered CMPs set out by PB of CMCHK
Criteria for funding (Training courses for persons engaged in CM drug industry)	<ul style="list-style-type: none"> • Run by “CM drug training course providers” • Course context within “training scope for persons engaged in CM drug industry” • Levelled as 2 or above under HKQF (e.g. certificate or above) 	<ul style="list-style-type: none"> • Run by “CM drug training course providers” • Course context within “training scope for persons engaged in CM drug industry” • Include “appropriate assessment” 	<ul style="list-style-type: none"> • Run by “CM drug training course providers” • Course context within “training scope for persons engaged in CM drug industry”
Funding ratio	<ul style="list-style-type: none"> • 90% for courses with HKQF level 5 or below (e.g. Bachelor degree or below) • 60% for courses with HKQF level 6 or above (e.g. Master degree or above) 	<ul style="list-style-type: none"> • 90% 	<ul style="list-style-type: none"> • 90%
Funding limit	<ul style="list-style-type: none"> • \$60,000 	<ul style="list-style-type: none"> • \$25,000 • Maximum of \$5,000 per course 	<ul style="list-style-type: none"> • Maximum of \$1,000 within 2 years • Reimbursement in up to two instalments. Applicant has to apply for reimbursement of at least \$500 within the first year

Chinese Medicine Clinic Improvement Funding Scheme (A1-4 Scheme)

Objective	To provide financial subsidy to eligible CM clinics in order to enhance medical record system, improve clinical operation in the areas of safety and hygiene, enhance facilities to cope with infectious diseases, safeguard the health of clinic staff and patients and provide better quality CM service to the public.			
Eligibility	<p>1. The targets are CM clinics which are set up by individuals with fixed address and are specialized in CM consultation.</p> <p>2. The applicant has to be the responsible person of the subject CM clinic (a HK registered/listed CMP). Each applicant can only apply for subsidy for one clinic and each clinic can only submit an application once.</p> <p><i>CM Rehabilitation Programme</i></p> <p>1. CM clinics run by non-governmental organisation/educational institution which provide COVID-19 rehabilitation programme may apply.</p> <p>2. Applicants need to provide the proposal which states the operation details, anticipated beneficiaries and budget of procuring improvement facilities in relation to the COVID-19 rehabilitation programme. Such programme has to be on board within 2 months after submitting application.</p>			
Scope	<ul style="list-style-type: none"> The CM clinic facility under application should at least comply with one of the following principles: <ol style="list-style-type: none"> The facility can improve CM record system; or The facility can raise the safety of CM clinical operation; or The facility can raise the hygiene of CM clinical operation; or The facility can increase infection control ability of CM clinic; or The facility can bring better quality CM service to the public (including methods that are systematic and modernized in raising the service quality of CM). The CM clinic facility under application should correspond to those items under the “List of eligible facilities”. 			
List of eligible facilities	A1-01	Computer hardware (like personal computer, laptop or tablet) and related software (like working systems, anti-virus software). Priority will be given to those which agree to install the CM Information System (CMIS) On-ramp developed by the Government*	A1-06	Chinese herbal medicines storage facilities
			A1-07	Herbal powder packaging device
	A1-02	Decoction equipment	A1-08	Clinical beds
	A1-03	Preparation equipment	A1-09	Equipment for cleaning and sterilisation of treatment tools
	A1-04	Electro-acupuncture devices	A1-10	Equipment for cleaning and sterilisation of clinic environment
	A1-05	Teding Diancibo Pu (TDP; Special Electromagnetic Spectrum) therapeutic apparatus	A1-11	Equipment for infection control in clinic
* This is a clinical management software developed by the Government for CM clinics for sharing information and uploading data. The CMIS On-ramp is expected to link up with the Electronic Health Record Sharing System (eHRSS) in 2021 and by that time applicants needs to access eHRSS via CMIS On-ramp and upload information whenever feasible.				
Funding amount	<p>1. Applicants may include more than one software or hardware improvement items in the application.</p> <p>2. Each eligible CM clinic can receive a maximum of \$25,000 subsidy. The subsidised amount for each item is half (50%) of the actual expense.</p> <p>3. Each CM clinic runa by non-governmental organisation/educational institution can receive a maximum subsidy of \$50,000 on a full and accountable basis.</p>			

Proprietary Chinese Medicine Quality and Manufacturing System Enhancement Funding Scheme (A2 Scheme)

Objective	<ol style="list-style-type: none"> To provide financial assistance to pCm manufacturers to obtain technical advice and procure hardware, in order to reach the GMP standards. To assist pCm manufacturers to engage consultants (i.e. consultancy services providers) for obtaining professional advice on GMP Certification, including basic assessment concerning obtaining GMP certification, gap analysis, provide advice and support in respect of application proposals, plan engineering design, additional equipment requirements, establishment of manufacturing practice and standard operating procedures and standard operating procedures, etc. To allow pCm manufacturers to select consultancy service providers and equipment that are eligible for subsidy under the approved list under the scheme, in order to obtain related consultancy services and procure equipment to fulfil GMP requirements. 				
Eligibility	<ol style="list-style-type: none"> Holders of Manufacturer Licence in pCm under the CM Ordinance (Cap. 549) (priority will be given to those with 3 years or above experience in pCm manufacturing; and Manufacturers not holding a Certificate for Manufacturer (Good Manufacturing Practice in respect of pCms). 				
Schemes	GMP Basic Assessment Funding Scheme (A2-1 Scheme)	GMP Consultancy Funding Scheme (A2-2 Scheme)			GMP Equipment Funding Scheme (A2-3 Scheme)
Project scope	Consultancy Services for pCm manufacturers to conduct preliminary assessment for GMP Certification	Consultancy Services for pCm manufacturers to conduct gap analysis for GMP Certification	Consultancy Services for pCm manufacturers to establish manufacturing practice and standard operating procedures	Consultancy Services for pCm manufacturers to submit application for GMP Certificate	To subsidy pCm manufacturers to design and procure equipment to fulfill the requirements relating to GMP Certification
Requirements	The consultant employed has to be one of the service providers as pre-approved by CMDF implementing agent as a qualified GMP consultant.				Applicant has to submit the consultancy report prepared by the qualified service provider with detailed specifications of those recommended equipment to be purchased to ensure such hardware is equipment as recommended by the consultant. The recommended equipment should correspond to the “List of approved GMP related hardware”.
Funding ratio	90%	50%			50%
Funding limit	\$30,000	\$100,000	\$150,000	\$200,000	\$600,000
Project completion time	2 months	3 months	12 months	6 months	12 months

List of approved GMP related hardware	Basic Facilities	A2-01	Purified Water System	Quality Control Instruments	A2-15	Inductively Coupled Plasma Atomic Emission Spectrometer
		A2-02	Compressed Air System		A2-16	High Performance Liquid Chromatograph
		A2-03	Heating, Ventilation and Air-conditioning System		A2-17	Gas Chromatograph
	Production Equipment	A2-04	Herbal Medicines Grinder			
		A2-05	Chinese Medicines Preparations Mixer			
		A2-06	Herbal or Chinese Medicines Preparations Drying Equipment			
		A2-07	Capsules Production Equipment			
		A2-08	Pills Production Equipment			
		A2-09	Granules Production Equipment			
		A2-10	Tablets Production Equipment			
		A2-11	Internal/External Packaging Equipment			
		A2-12	Sampling Equipment with Cleanliness Grade			
		A2-13	Metal Detector			
		A2-14	Dedusting Equipment			

Proprietary Chinese Medicine Registration Supporting Scheme (A3 Scheme)

Objective	<ol style="list-style-type: none"> 1. To provide subsidy to eligible local licensed proprietary Chinese medicines (pCm) manufacturers or wholesalers to obtain technical support for application for “Certificate of Registration of pCm” (HKC). 2. To expedite the completion of conversion of existing pCm with transitional registration (HKP) in the market to HKC. 3. To assist holders of pCm registration to engage consultants (i.e. service providers) to obtain expert advice, collect and prepare required information and documents in respect of safety, efficacy and quality relating to the application for HKC, as well as to conduct necessary testing of the pCm.
Eligibility	<ul style="list-style-type: none"> • Holders of Manufacturer Licence in pCm and Wholesaler Licence in pCm under the CM Ordinance (Cap. 549) • Priority will be given to pCm with transitional registration (HKP)
Project scope	<ul style="list-style-type: none"> • To provide subsidy to eligible local licensed pCm manufacturers or wholesalers to obtain technical support for application for “Certificate of Registration of pCm” (HKC) in order to ensure that the product complies with the registration requirements set by the Chinese Medicines Board under the Chinese Medicine Council of Hong Kong; • To engage consultants to obtain expert advice, collect and prepare required information and documents in respect of safety, efficacy and quality relating to the application for HKC; and • To conduct the necessary testing of the pCm for application for HKC.
Requirement	<ul style="list-style-type: none"> • Services or testings for which subsidy is applied have to be related to application for HKC. • The consultancy services and/or laboratory testings for which subsidy is applied have to be conducted by those service providers set out in the “List of qualified pCm registration service providers” and/or “List of qualified laboratory testing service providers” under the scheme.
Funding ratio	<p>The subsidy for each project will be 50% of the fees charged by the services provided by a qualified consultant and/or incurred from laboratory testing.</p>
Funding limit	<ul style="list-style-type: none"> • Each eligible manufacturer/wholesaler can apply for subsidy for a maximum of 10 pCms under its ownership/licence. • A maximum of \$20,000 subsidy can be received for each pCm conducting consultancy services and /or laboratory testing in relation to HKC registration. • Each pCm manufacturer or wholesaler can receive a maximum total of \$200,000.

Chinese Medicine Warehouse Management, Logistics and Services Improvement Funding Scheme (A4 Scheme) [Details to be confirmed]

Objective	<ol style="list-style-type: none">1. To provide financial assistance for CM drug wholesalers and retailers to enhance the efficiency and safety in processing, storing and transporting CM drug.2. To provide financial assistance for eligible CM drug retailers to provide better quality of CM services.
Eligibility	<ul style="list-style-type: none">• Applicants must be holders of Wholesaler Licence or Retailer Licence in Chinese Herbal Medicines in accordance with CM Ordinance (Cap. 549) and holders of Business Registration Certificate.• Taking into account of the need of the industry, priority will be given to the sole proprietor business of CM drug wholesalers and retailers.

Industry Support Programme (B Scheme)

	Chinese Medicine Industry Training Funding Scheme & Chinese Medicine Promotion Funding Scheme (B1 Scheme)		Chinese Medicine Applied Studies and Research Funding Scheme (B2 Scheme)
	CM Industry Training Funding Scheme (B1-1 Scheme)	CM Promotion Funding Scheme (B1-2 Scheme)	
Objective	To subsidise different types of activities, for example training courses, workshops and seminars, with a view to addressing the inadequacies of the existing courses in the market having regard to the development of CM in Hong Kong, in order to cultivate talents in the CM industry, improve the professional knowledge level of the industry, and demonstrate standards of good practice in the industry.	To subsidise different types of activities to promote CM to the public, such as mobile exhibitions, exhibitions, promotional events, video filming, computer/mobile phone applications development to showcase the latest development of the industry and promote public awareness of CM.	<ol style="list-style-type: none"> 1. The project may cover different types of research, for example CM technology applied studies, industry market research, etc. 2. Research results may enhance the code of practice of the CM industry, manufacture technology and process, and identify issues in relation to talents or resources available in the market
Eligibility	Non-profit organisations, including but not limited to professional bodies, trade associations, institutes/societies, universities and higher education institutions are eligible to apply for funding support under the ISP. Projects receiving other government funding support will not be considered.		
Priority themes	<ol style="list-style-type: none"> 1. Training to support development of the overall CM and CM drug sectors including CMH development 2. CM specialist training programme courses 3. Professional training for CM drug sector 4. CM master-apprentice programme 5. COVID-19 related projects 	<ol style="list-style-type: none"> 1. COVID-19 related projects 	<ol style="list-style-type: none"> 1. Studies on understanding and application of CM and CM drug by the public 2. Research studies on supporting CMH development 3. Research on traditional CM and CM drug theories 4. Clinical and methodology research with application of CM and CM drug theories 5. Research on CM and CM drug sectors professional development (e.g. research on the development of CM specialists and research on the development of CM pharmacist profession) 6. Studies on application of modern technology in CM 7. Studies on the integrated treatment by CMP and other medical professionals 8. Survey and research on enhancing the development of CM and CM drug sectors in Hong Kong 9. Survey and studies on raising professional standards of members of CM and CM drug sectors 10. Promotion of primary healthcare through CM 11. Prevention and control of diseases (e.g. cancer, flu and promoting mental health) through CM 12. COVID-19 related projects
Funding limit	\$2,750,000	\$750,000	\$2,000,000