



沙田至中環綫項目工程進展

Progress Update on the Construction of the Shatin to Central Link

立法會交通事務委員會

鐵路事宜小組委員會

Legislative Council Panel on Transport

Subcommittee on Matters Relating to Railways

2021年1月15日

15 January 2021

- 整體工程進展

Overall project progress

- 「大圍至紅磡段」工程進展

Works progress of Tai Wai to Hung Hom Section

- 「紅磡至金鐘段」工程進展

Works progress of Hung Hom to Admiralty Section

截至 2020年11月30日整體工程進度
As at 30 Nov 2020,
of the overall works completed

96%



大圍至紅磡段

Tai Wai to Hung Hom Section

宋皇臺站及土瓜灣站法定檢測工作

Statutory Inspections for Sung Wong Toi and To Kwa Wan Stations

- 法定檢測工作及所有車站出入口外部裝修工程完成，現正繼續進行各項測試及演練。

Statutory inspections and external finishing work at entrances of the two stations are complete, while testing and commissioning are in progress.



宋皇臺站
Sung Wong Toi Station



土瓜灣站
To Kwa Wan Station



紅磡站改建工程

Hung Hom Station Modification Works



紅磡站大堂 Station concourse



屯馬綫月台 Tuen Ma Line platform

- 大堂改建工程正進行法定檢測
Statutory inspections are in progress for the modification works of station concourse
- 屯馬綫月台已大致完成機電、屋宇裝備及內部裝修工程，現正進行測試
E&M works, building services and fitting out works for the future Tuen Ma Line platforms are generally complete, while testing and commissioning are in progress.

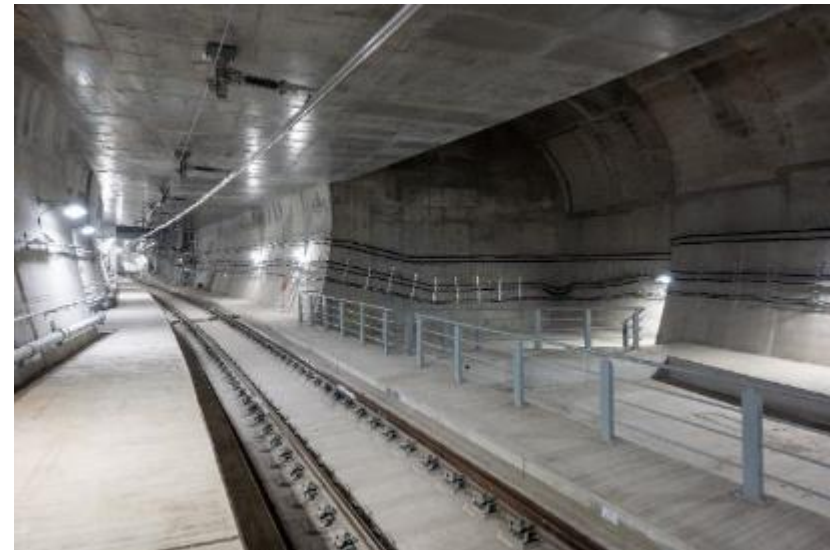
紅磡至金鐘段

Hung Hom to Admiralty Section

過海及港島段鐵路隧道

Cross-Harbour Railway Tunnels and Hong Kong Island Section

- 鐵路隧道內已完成軌鋪設軌道、架空電纜及主要機電系統安裝工程。
Track laying works, and installation of overhead line and major E&M systems for the railway tunnels are complete



會展及金鐘站

Exhibition Centre and Admiralty Stations

- 會展站已於2020年11月平頂，站內正全力推展鐵路系統安裝及裝修工程。

Exhibition Centre Station was topped out in November 2020. Installation of the railway systems and architectural finishes at the station is well underway.



- 金鐘站擴建部分的鐵路系統，包括車站控制系統、消防系統及扶手電梯等正進行相關測試

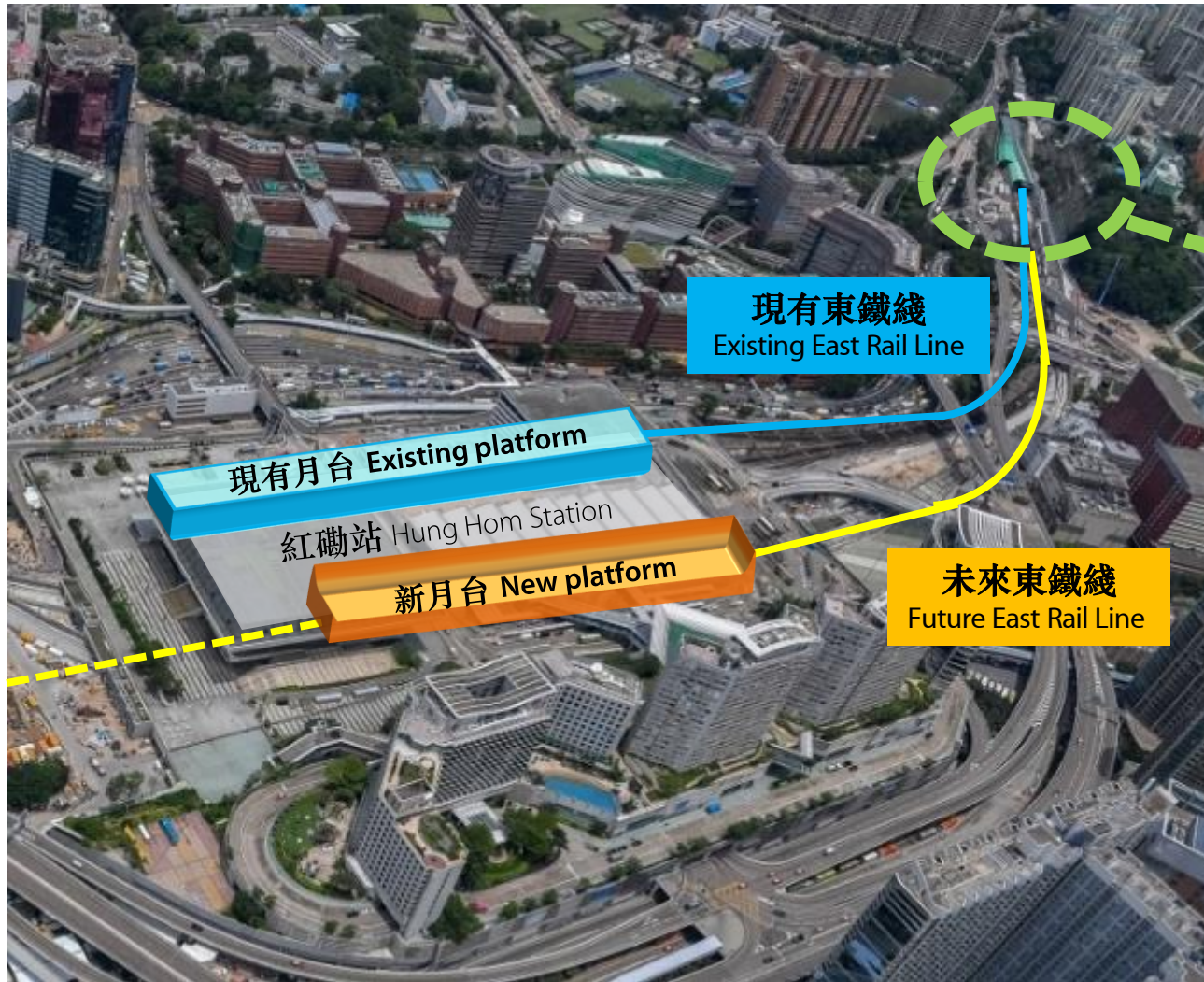
At the extended Admiralty Station, testing and commissioning for the railway systems and facilities such as station control system, fire services system and escalators has commenced.

東鐵綫新軌道接駁關鍵工程

Critical Bifurcation Works for East Rail Line

關鍵接駁工程簡介

Critical Bifurcation Works



新軌道接駁工程位置

Location of bifurcation works



首階段工程順利完成

1st Phase of Works Complete

- 160米軌道由東鐵綫接駁到過海段
- Realigned 160m of tracks from East Rail Line to the cross-harbour section
- 搬動共20噸重路軌
- Lifted 20 tons of tracks
- 相關燒焊、打磨過程完成
- Relevant welding and grinding finished



全方位呼籲乘客及早計劃替代路綫

Multi-channel Reminders to Passengers on Alternatives

- 各項宣傳工作及站內告示提醒乘客
- Wide publicity and signages in stations to remind passengers
- 以MTR mobile 便利規劃行程
- MTR Mobile facilitates trip planning



充份照顧乘客需要

Passenger Needs Well Taken Care Of



- 額外加派職員於站內協助乘客
- Additional staff to assist passengers
- 靈活調配接駁巴士班次確保服務
- Flexible shuttle bus frequency ensures availability

致力確保暢順安排

Striving to Ensure Smooth Arrangement

紅磡至旺角東站列車服務暫停
No train service between Hung Hom and Mong Kok East stations

2月21日 (星期日)
21/2/2021 (Sunday)

旺角東 Mong Kok East 紅磡 Hung Hom

其他乘車資料 Alternative transport information

港鐵其他綫路
Other MTR lines

往旺角東、麗湖 / 港島線方向
Towards Mong Kok East, Lu Wu / Loop Line

紅磡 尖東 尖沙咀 旺角 九龍城 旺角東 麗湖 / 港島線

其他公共交通工具
Other public transport
(詳情可參閱站內資訊) Information available in station

港鐵免費接駁巴士服務*
Free MTR shuttle bus service

九龍城 麗湖 / 港島線 05:45 - 01:14 紅磡 旺角東 05:30 - 00:35

MTR Mobile
了解更多詳情 Further information

繼續為你做好-多謝體諒
We are striving to improve - thank you for your understanding



東鐵綫新信號系統及新列車

East Rail Line New Signalling System and New Trains

- 調查委員會報告待相關的技術調查完成非行車時間的進一步測試後，會適時公布。

The Report of the Investigation Panel will be released in due course, pending further testing of the new signalling system during nontraffic hours.

- 確定技術及服務可靠性及獲得相關政府部門批准後，預計今季內可投入服務。

Expected to be put into service within this quarter upon confirmation of its technical and service reliability, and approval from the relevant Government departments.



總結

Conclusion

- 屯馬綫全綫預計於2021年第三季通車，籌備工作進展順利。
Full opening of the Tuen Ma Line is expected to be in Q3 2021. Works for the full opening have progressed well.
- 東鐵綫進行新軌道接駁關鍵工程，以配合東鐵綫延伸過海。
Critical bifurcation works for East Rail Line are being conducted. Such works facilitates the extension of the existing East Rail Line across the harbour.
- 「紅磡至金鐘段」於2022年第一季通車的目標充滿挑戰，工程團隊會繼續努力達致此目標。
The targeted commencement of passenger services on the Hung Hom to Admiralty Section in Q1 2022 remains a challenge. Projects Team continues to strive to meet the programme.

多謝
Thank You