



沙田至中環綫項目工程進展

Progress Update on the Construction of the Shatin to Central Link

立法會交通事務委員會

鐵路事宜小組委員會

Legislative Council Panel on Transport

Subcommittee on Matters Relating to Railways

2021年2月5日

5 February 2021

東鐵綫新信號系統及 調查委員會報告

East Rail Line New Signalling System &
the Investigation Panel Report

東鐵綫新信號系統及新列車

East Rail Line New Signalling System and New Trains

- 新信號系統及新9卡列車將於明日（二月六日）投入服務
The new signalling system and 9-car trains will be put into service tomorrow (6 February)

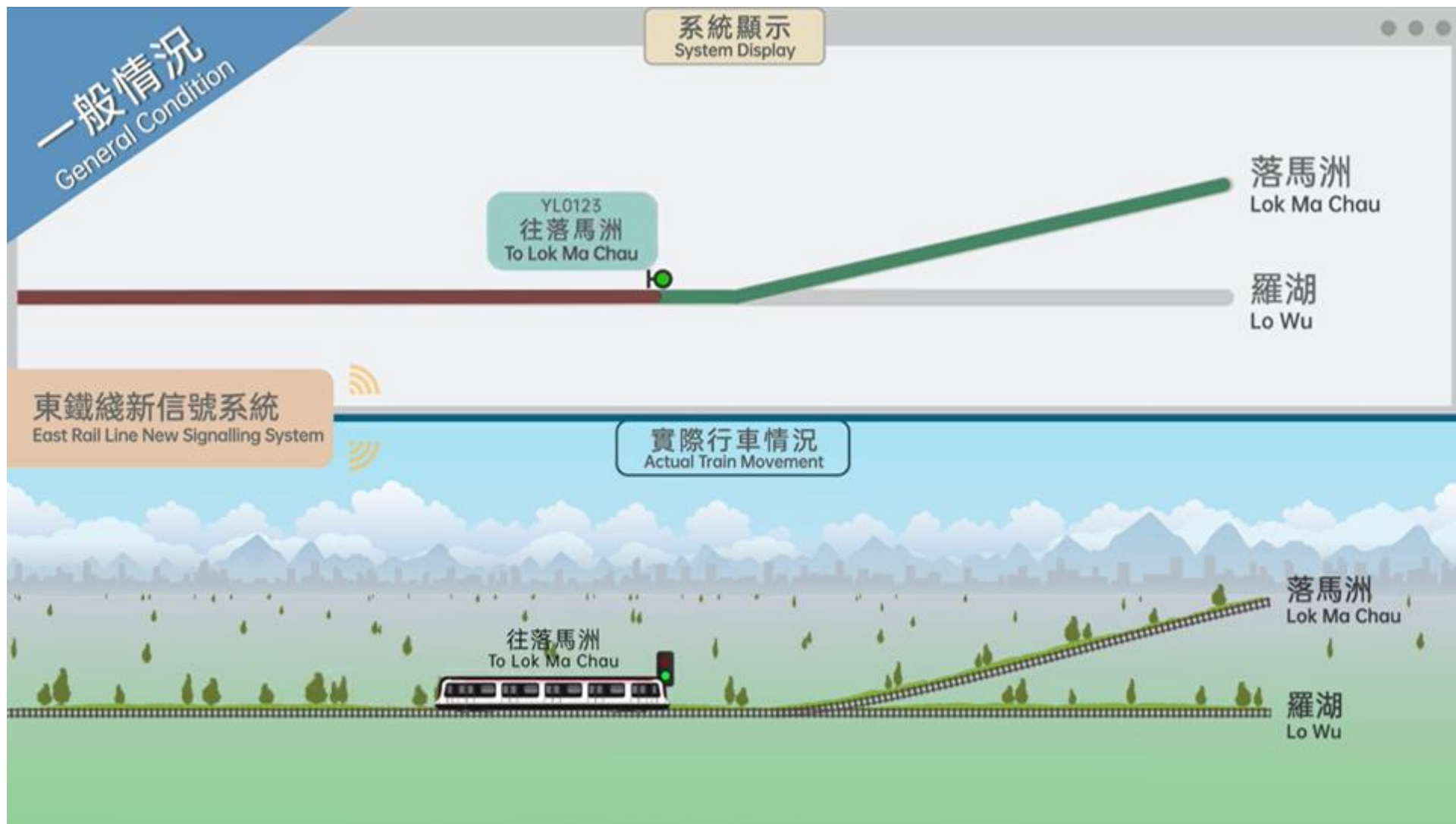


暫緩事宜相關調查

Investigation into the Postponement

- 成立調查委員會調查暫緩啟用新信號系統
An Investigation Panel established to look into the postponement
- 進行技術調查找出導致暫緩事宜的技術問題的根本成因和制定解決方案
Technical investigation conducted to identify the root cause of the issue concerned and formulate technical solution
- 調查委員於2021年2月1日公布調查觀察及建議。
The Investigation Panel presented on 1 February 2021 key observations and recommendations

「重複設定行車路線」 Route Recall



改革求變

Transformation in Progress

增強監察沙中綫餘下工程

Strengthen monitoring of the SCL project remaining works

成立沙中綫項目保證監督組

Set up SCL Technical and Engineering Assurance Team

整理公司架構及管治

Enhance company structure and governance

重組相關處別，加強第二道防綫核查工作

Restructure relevant divisions, reinforce the second line of defence

改變工作文化

Transform work culture

啟動企業策略及加強培訓

Launch corporate strategy and enhance training

調查委員會的主要觀察

Key observations by Investigation Panel

- 這個「重複設定行車路綫」情況不涉及安全問題，但影響服務可靠性
Route Recall is not an issue of safety but of service reliability
- 不涉及刻意隱瞞，但低估情況複雜性，對公眾就服務可靠性的期望的敏感度不足
No intentional concealment but underestimated the issue's complexity and were not sensitive enough to public expectations on service reliability
- 上述的低估影響了對有關情況未有徹底調查、內部上報及向政府部門的通報
Resulted in absence of thorough investigation into and the delay in internal escalation of the concerned issue and impacted the reporting to relevant Government departments

調查委員會的建議

Recommendations by Investigation Panel

- 清晰表述潛在事件的修正建議
Improve clarity on proposed rectifications of a potential issue
- 加強員工培訓，提升對公眾關注、溝通及服務可靠性等方面的敏感度
Strengthen training to raise sensitivity of public concerns, communications and service reliability issues
- 提供內部指引，確保所有與可靠性有關的重要情況都會適時匯報相關政府部門
Provide internal procedures to ensure that relevant Government departments are kept adequately informed of all significant reliability issues in the future
- 加強風險管理及監控能否符合規範的第二道防綫的安排
Reinforce the second line of defence arrangement on risk management and compliance control
- 增設服務可靠性報告
Introduce Service Reliability Report

混合車隊營運

Mixed Fleet Operations

- 初期盡量以12卡車於早上繁忙時間服務南行乘客
12-Car trains to run southbound during morning peak hours at the initial stage as far as possible
- 多項措施協助乘客：
Multiple measures to assist passenger:
 - 月台當眼位置增設標示
Prominent signage on platforms
 - 進行月台廣播
Clear public announcements
 - 月台資訊屏顯示下班列車卡數
Information display panels showing info of next trains
 - 加派約300職員提供即時協助
~300 additional staff in stations providing immediate assistance



30°C	14:25
落馬洲	1 9 卡
羅湖	1 12 卡
羅湖	1 12 卡
落馬洲	1 9 卡



車廂更寬敞舒適

Spacious and comfortable train compartments



車廂比現有列車闊
Wider train body



動態路線圖及
車卡連接通道液晶體顯示屏
Dynamic route map and
gangway end display system

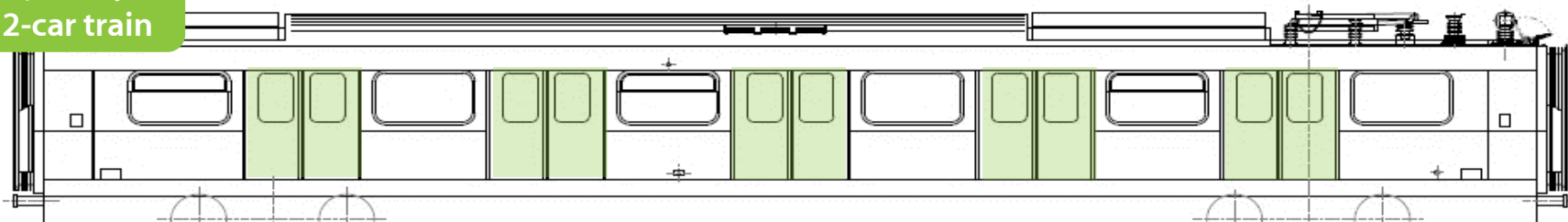


改良扶手設計及
二極管(LED)照明系統
Newly designed handrail and LED
compartment lighting system

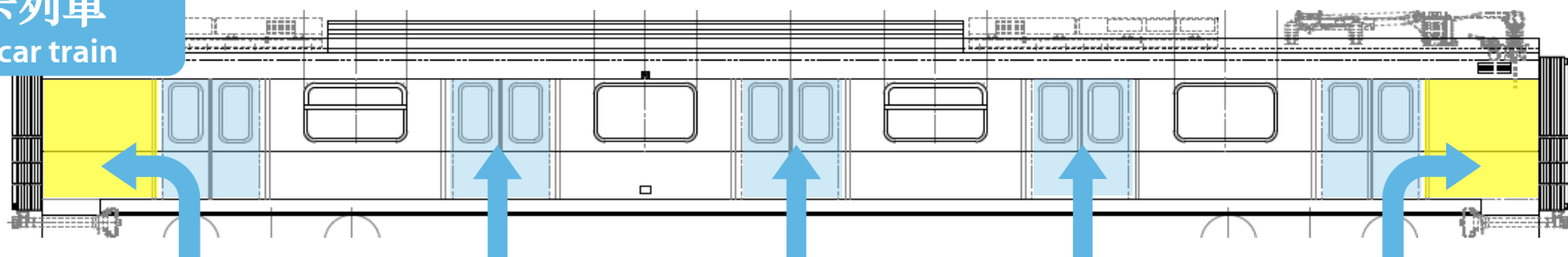
改善設計盡用車廂空間

Improved design better utilises space of train compartments

現有12卡列車
Existing 12-car train



新9卡列車
New 9-car train



新列車的車門分佈更平均
有助乘客平均分佈在車廂內
The locations of the doors of the new trains are improved, passengers
could be evenly spaced inside the train compartments

鐵路事故 應變機制

Contingency arrangements for railway incidents

MTR Mobile App



交通資訊

Transport Information



通知傳媒

Inform the media



接駁巴士指示

Shuttle Bus Signage



即時資訊

Instant information



關鍵新軌道接駁工程

Critical Bifurcation Works

新軌道接駁工程位置
Location of bifurcation works



紅磡至旺角東站列車服務暫停

No train service between Hung Hom and Mong Kok East stations

2月21日 (星期日)
21/2/2021 (Sunday)



其他乘車資料 Alternative transport information

港鐵其他綫路
Other MTR lines



其他公共交通工具
Other public transport
(詳情可參閱站內資訊) Information available in station

港鐵免費接駁巴士服務*
Free MTR shuttle bus service

九龍城站 彌敦道 05:45 - 01:14 旺角東站 彌敦道 05:30 - 00:35

MTR Mobile
更多資訊
Further information

繼續為你做好-多謝體諒
We are striving to improve - thank you for your understanding

* 受路況交錯情況影響，服務時間可能有所調整。
* A waiting time should be expected due to uncertain road traffic conditions.

查詢詳情請致電 2700 1111 或前往各站客運服務中心查詢。
For more information, please call 2700 1111 or visit the客運服務中心.

新軌道接駁工程 – 乘客安排

Bifurcation works – Passenger arrangement

- 各項宣傳工作及站內告示提醒乘客
Wide publicity and signages in stations to remind passengers
- 額外加派職員於站內協助乘客
Additional staff to assist passengers
- 以MTR mobile 便利規劃行程
MTR Mobile facilitates trip planning



沙中綫整體工程進度

SCL overall works progress

截至 2020年12月31日整體工程進度
As at 31 December 2020,
of the overall works completed

96%



屯馬綫全綫試營運

Trial operations of Full Tuen Ma Line



- 屯馬綫全綫今年一月底進入試營運階段
The full Tuen Ma Line has entered into Trial Operations since end-January 2021
- 標誌著屯馬綫邁進通車的里程碑
An important milestone signifying the Tuen Ma Line is getting close to commissioning



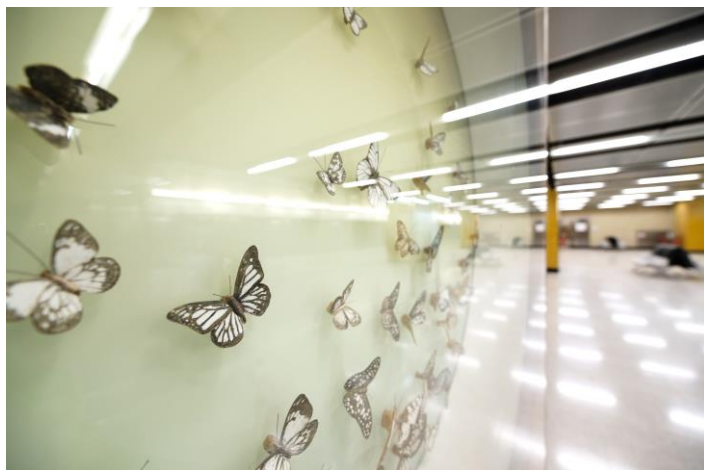
大圍至紅磡段

Tai Wai to Hung Hom Section

宋皇臺站及土瓜灣站

Sung Wong Toi and To Kwa Wan Stations

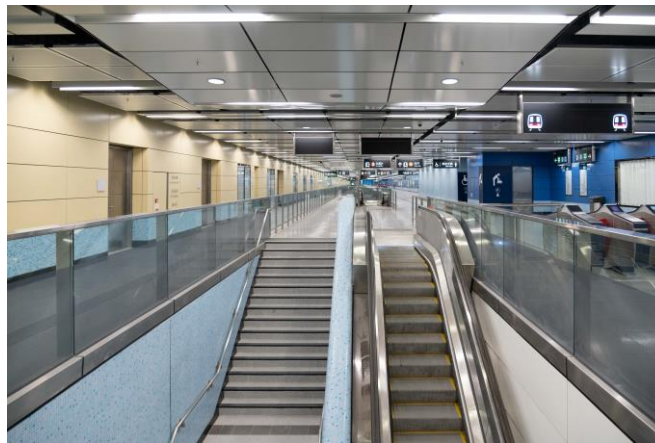
- 兩個新站繼續就不同鐵路系統進行測試及演練。
Testing and commissioning of different railway systems continue in the two new stations.



宋皇臺站
Sung Wong Toi Station



土瓜灣站
To Kwa Wan Station



紅磡站改建工程

Hung Hom Station Modification Works



紅磡站大堂 Station concourse



屯馬綫月台 Tuen Ma Line platform

- 大堂改建工程正進行法定檢測
Statutory inspections are in progress for the modification works of station concourse
- 屯馬綫月台已大致完成機電、屋宇裝備及內部裝修工程，現正進行測試
E&M works, building services and fitting out works for the future Tuen Ma Line platforms are generally complete, while testing and commissioning are in progress

紅磡至金鐘段

Hung Hom to Admiralty Section

過海及港島段鐵路隧道

Cross-Harbour Rail Tunnels and HK Island Section

- 鐵路隧道的整體工程已大致完成，目標於今年第一季為「紅磡至金鐘段」架空電纜通電。

The overall works of the railway tunnels are substantially complete. The energisation of Hung Hom to Admiralty Section overhead line is targeted to commence in Q1 2021.

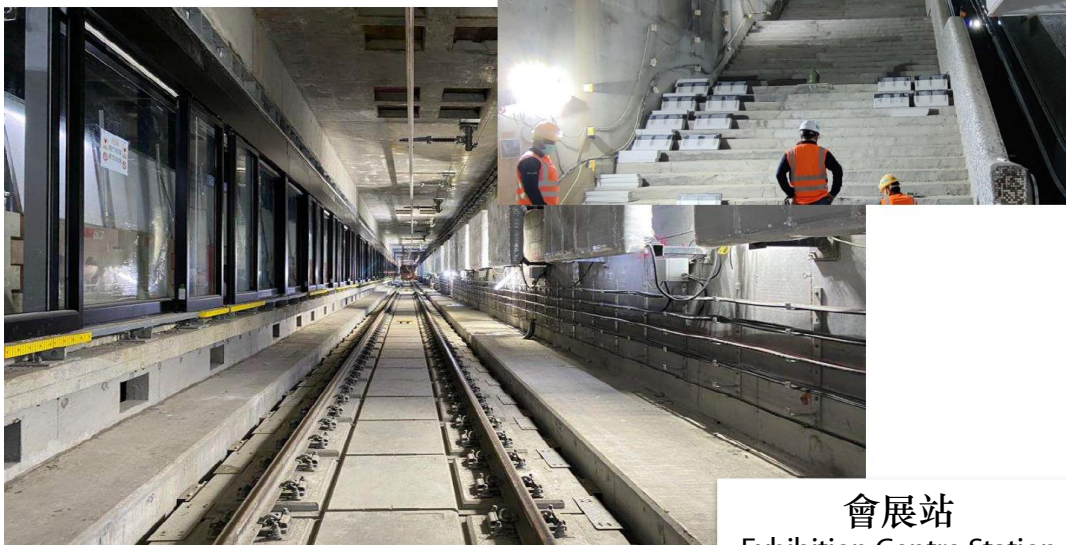


會展及金鐘站

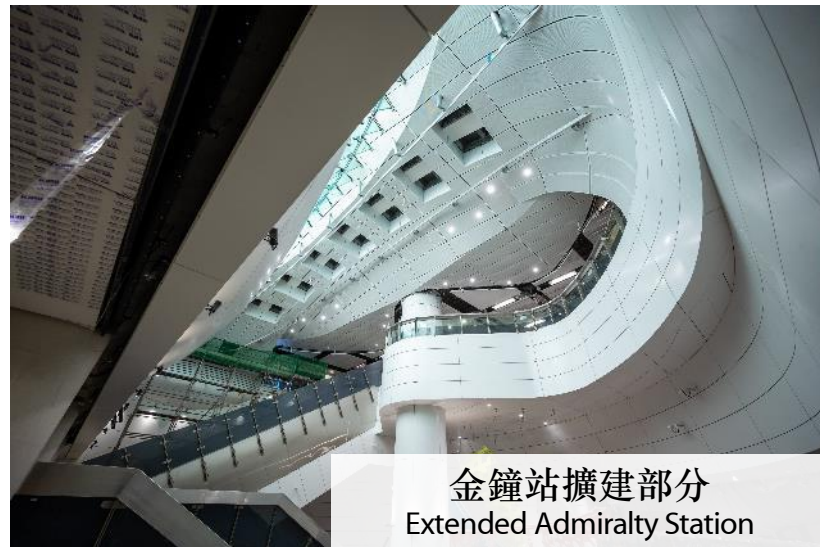
Exhibition Centre and Admiralty Stations

- 會展站的土木工程已完成超過90%，站內正全力推展鐵路系統安裝及裝修工程。

Civil works for Exhibition Centre Station is completed over 90%. Installation of the railway systems and architectural finishes at the station is well underway.



會展站
Exhibition Centre Station



金鐘站擴建部分
Extended Admiralty Station

- 金鐘站擴建部分的鐵路系統，包括車站控制系統、消防系統及扶手電梯等正進行相關測試

At the extended Admiralty Station, testing and commissioning for the railway systems and facilities such as station control system, fire services system and escalators has commenced.

總結

Conclusions

- **新信號系統及新9卡列車明日投入服務**
New Signalling system and New 9-car trains to commence service on 6 February
- **全面評估紅磡至金鐘段通車時間表**
Hung Hom to Admiralty Section service commencement to be thoroughly assessed
- **屯馬綫全綫開始試營運，進入通車最後準備**
Full Tuen Ma Line opening enters final preparation stage with Trial Operations underway

多謝
Thank You