



沙田至中環綫項目工程進展

Progress Update on the Construction of the Shatin to Central Link

立法會交通事務委員會

鐵路事宜小組委員會

Legislative Council Panel on Transport

Subcommittee on Matters Relating to Railways

2021年6月4日

4 June 2021

截至 2021年3月31日整體工程進度

As at 31 March 2021,
of the overall works completed

97%



6月27日屯馬綫全綫通車

Full Tuen Ma Line to commence passenger service on 27 June



- 屯馬綫全綫約 56 公里，共 27 個車站，為全香港最長鐵路
Running approximately 56 km and serving 27 stations, it will be the longest railway line in Hong Kong

紅磡至金鐘段

Hung Hom to Admiralty Section

1. 隧道
Tunnels
2. 車站
Stations
3. 新軌道接駁工程
Bifurcation Works
4. 東鐵綫新信號系統
East Rail Line New Signalling System

過海及港島段鐵路隧道

Cross-Harbour and HK Island Section Rail Tunnels

- 鐵路隧道整體工程已大致完成
Overall works of the railway tunnels are substantially complete
- 架空電纜已於三月底通電，各項測試已陸續展開
With the overhead line energised in late March, various testing along the section has commenced progressively



會展及金鐘站

Exhibition Centre and Admiralty Stations

- 會展站正進行裝修、機電工程及屋宇設備工程，道路重置工程亦正在進行。
Architectural builder's works and finishes, E&M works and building services installation works are progressing at Exhibition Centre Station. Road reinstatement works are also in progress.



會展站工地
Exhibition Centre Station
Works Site



金鐘站擴建部分
Extended Admiralty Station

- 金鐘站擴建部分及鐵路系統正進行相關測試及消防檢測工作。
At the extended Admiralty Station, testing and commissioning for the railway systems and facilities, as well as their fire services inspections are underway.

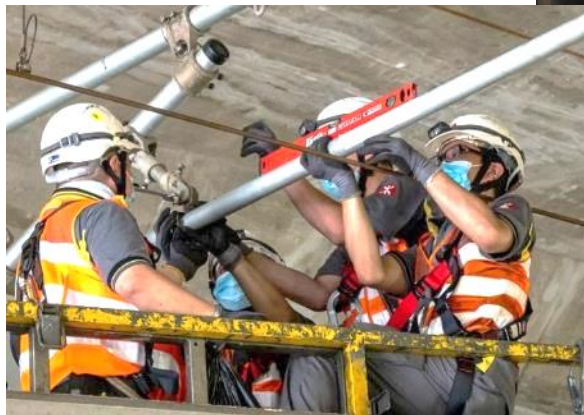
新軌道接駁工程 Bifurcation Works

新軌道接駁工程位置
Location of bifurcation works



新軌道接駁工程 Bifurcation Works

- 已完成四次於星期日進行的新軌道接駁工程
Bifurcation works have already taken place on four Sundays
- 工程進展順利，乘客安排暢順，東鐵綫列車服務正常
Works were completed as planned.
Passenger arrangement was smooth with normal service of East Rail Line maintained



東鐵綫新信號系統及新列車

East Rail Line New Signalling System and New Trains

- 新信號系統及新列車
已於二月投入服務
The new signalling system
and new trains have
commenced service in
February



混合車隊營運

Mixed Fleet Operations

- 多項措施協助乘客：
Multiple measures to assist passengers:
 - 月台當眼位置增設標示
Prominent signage on platforms
 - 進行月台廣播
Clear public announcements
 - 月台資訊屏顯示下班列車卡數
Information display panels showing the no. of car of the next train
 - 加派職員提供即時協助
Additional staff in stations providing immediate assistance



30°C	14:25
落馬洲	1 9 卡
羅湖	1 12 卡
羅湖	1 12 卡
落馬洲	1 9 卡



總結

Conclusions

- 屯馬綫全綫將於6月27日通車

The Full Tuen Ma Line will open for passenger service on 27 June

- 紅磡至金鐘段工程包括新軌道接駁工程正按序進行

Works of the Hung Hom to Admiralty Section including the bifurcation works and other are proceeding as planned

- 根據東鐵綫新信號系統投入服務的時間，港鐵公司正全力加快相關工程，以期盡早讓「紅磡至金鐘段」投入服務，並正全面評估通車目標。

Based on the commencement date of the EAL new signalling system, the Corporation is expediting works as fast as possible to bring the Hung Hom to Admiralty Section into operation as soon as practically possible, while a holistic assessment of the programme is underway.

多謝
Thank You