

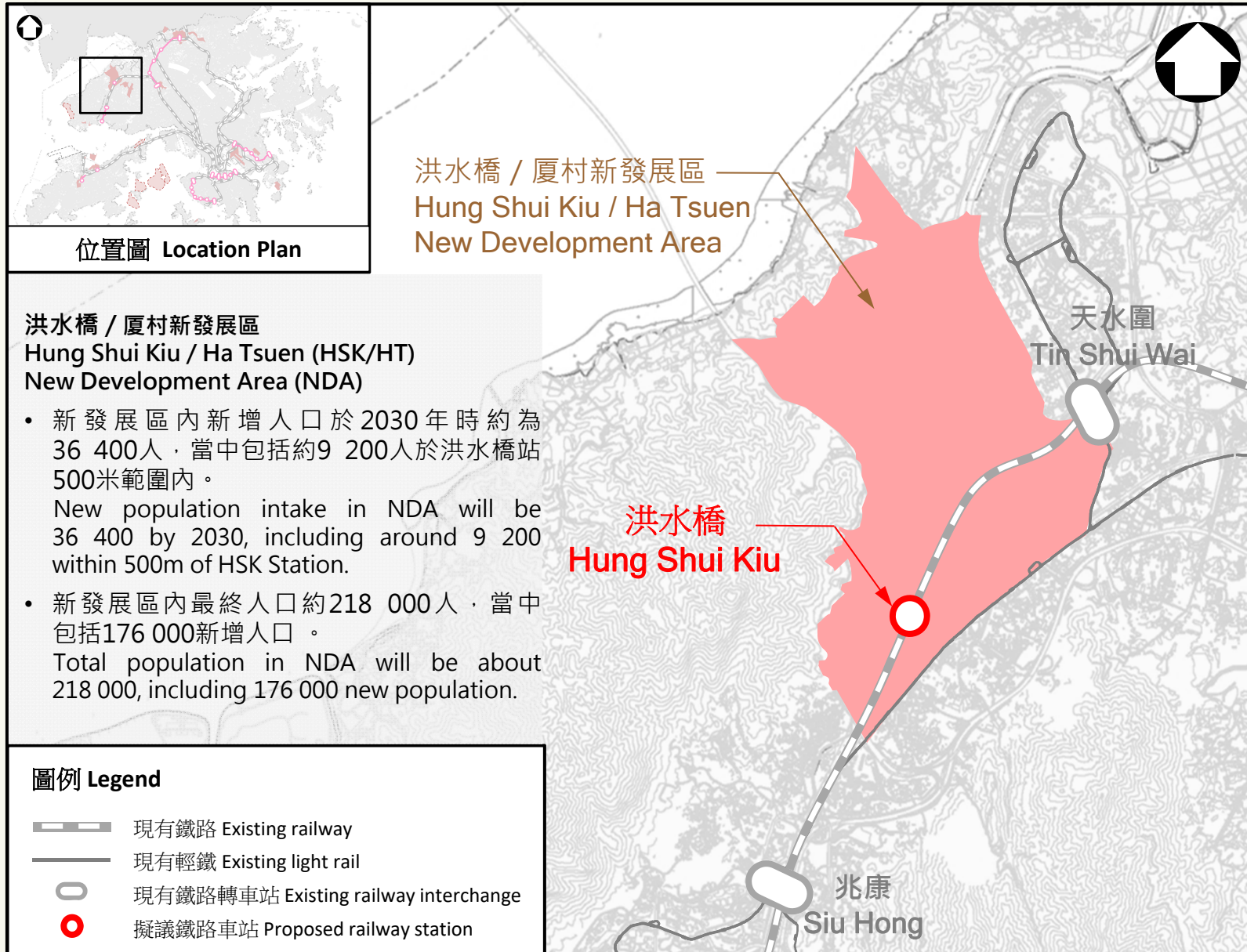
洪水橋站

Hung Shui Kiu Station

4.6.2021

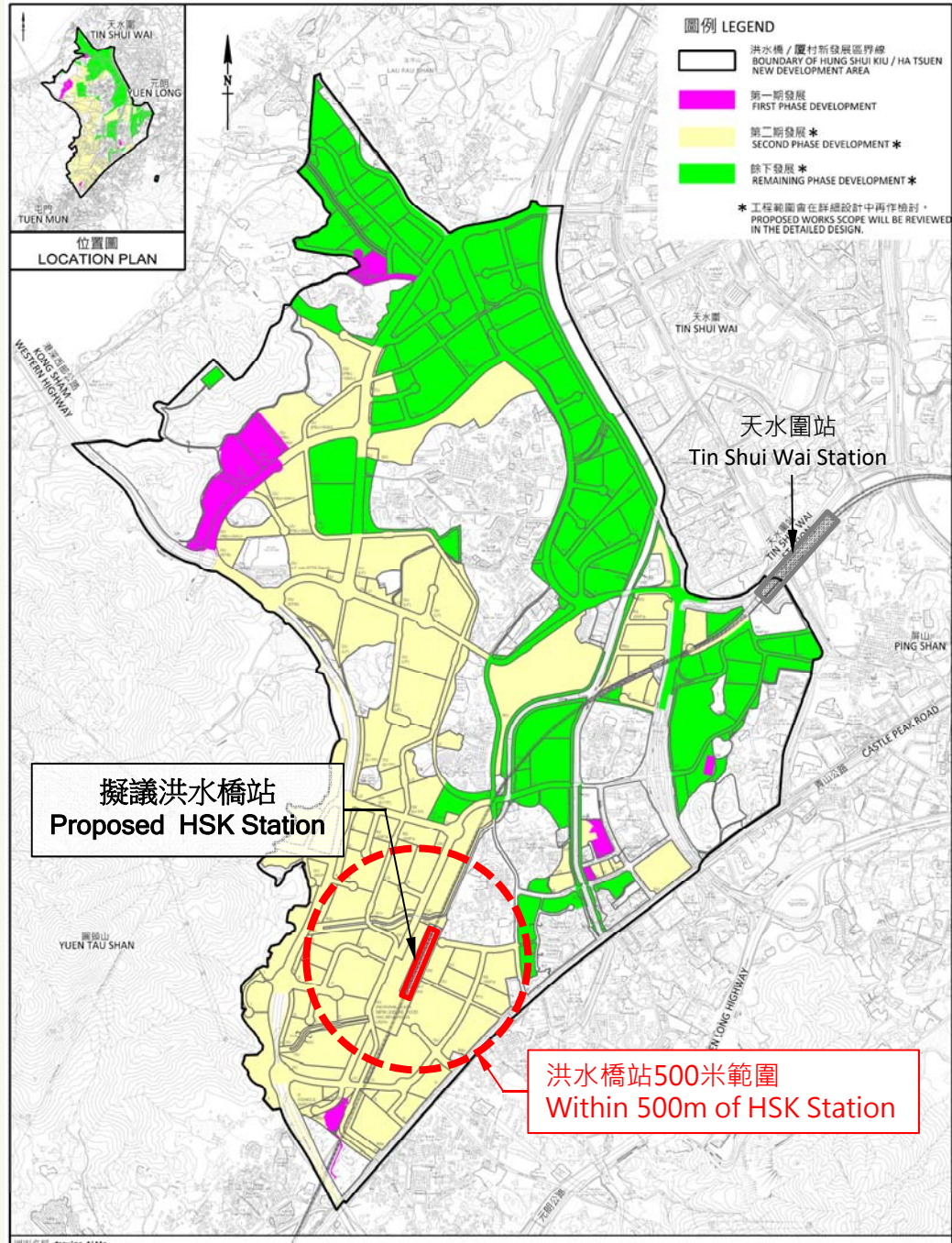
洪水橋站 - 《鐵路發展策略2014》建議七個鐵路項目之一

Hung Shui Kiu (HSK) Station - One of seven recommended schemes under Railway Development Strategy 2014



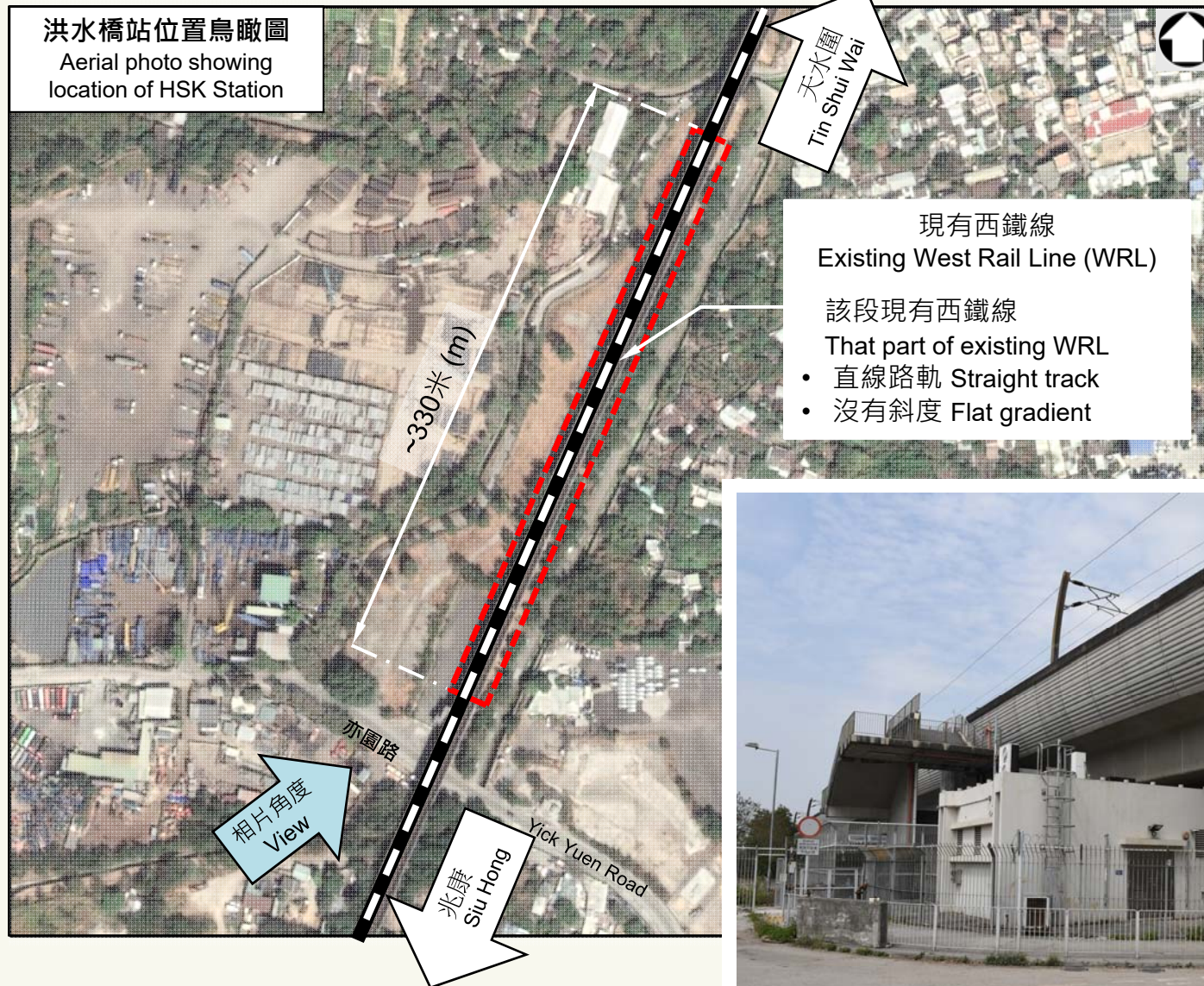
洪水橋/厦村新發展區 HSK/HT NDA

	入住人口 Population Intake
第一期發展 First Phase Development	4 400
第二期發展 Second Phase Development	90 800
餘下發展 Remaining Phase Development	80 800
整項發展 Entire Development	176 000



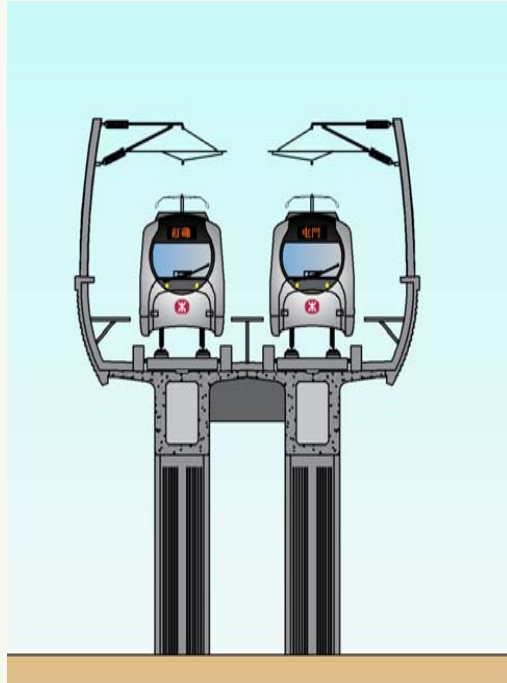
擬議洪水橋站位置

Proposed Location of HSK Station

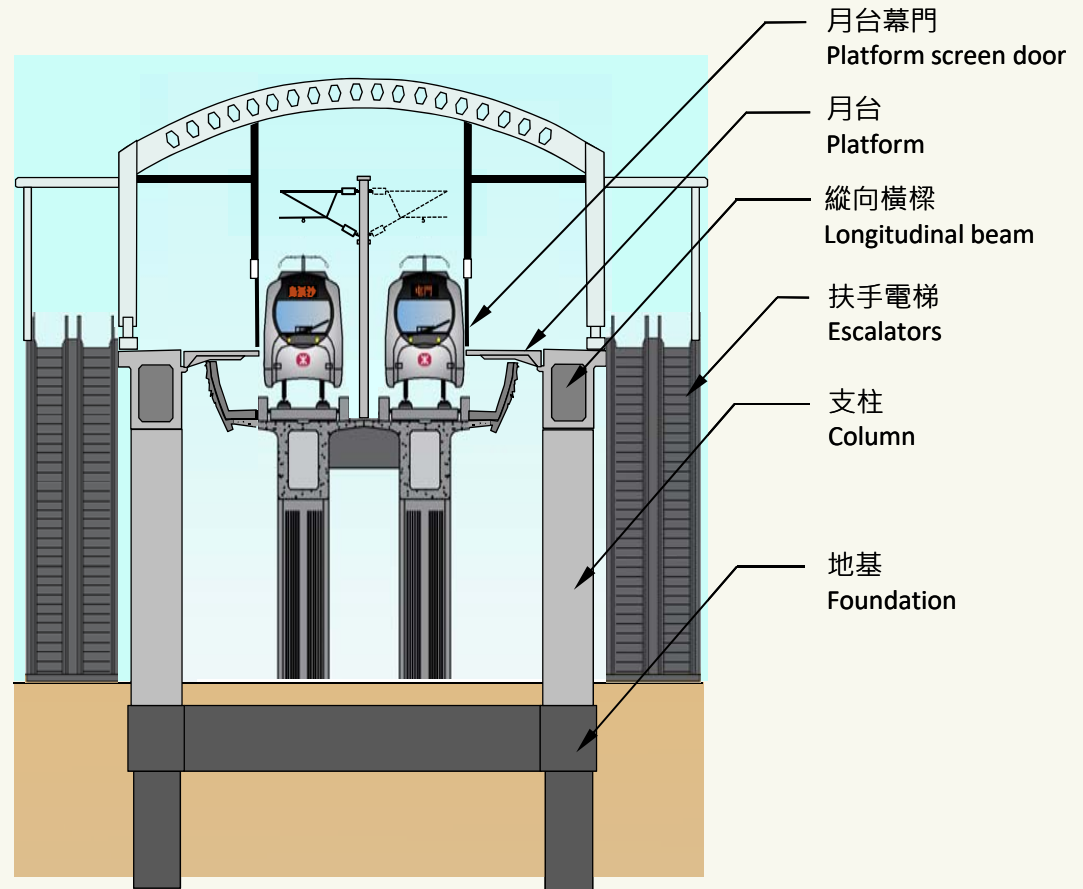


註：擬議洪水橋站位置只供參考。
Note: Location of proposed HSK Station is indicative only.

現有西鐵線橫切面 Existing WRL Cross Section



擬議洪水橋站橫切面 Proposed HSK Station Cross Section



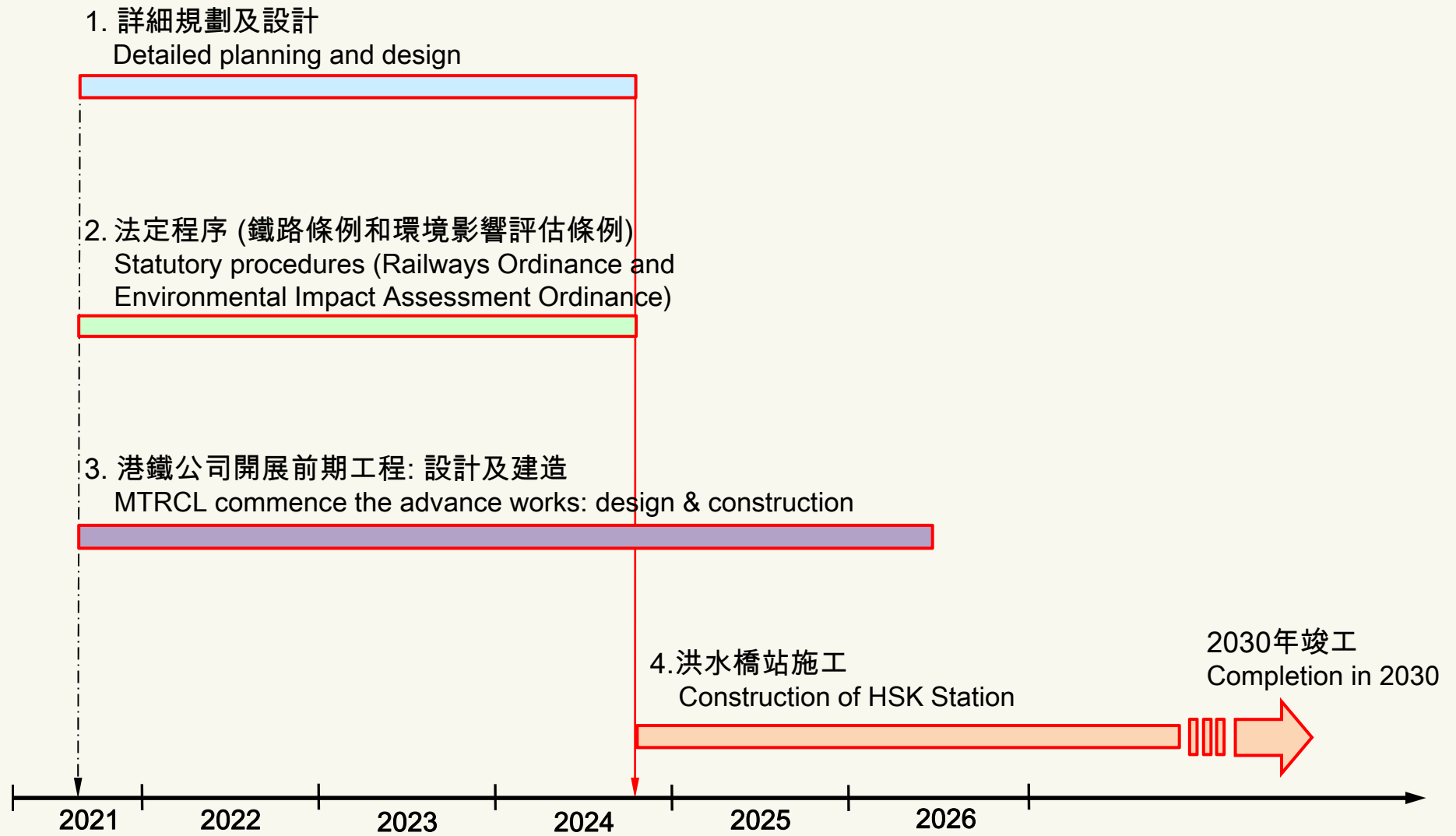
註: 橫切面圖只供參考。
Note: Cross sections are for illustrative purpose only.

項目財務概況 Project Financial Situation

香港鐵路有限公司(港鐵公司)提交的建議書是基於「擁有權」模式推展洪水橋站項目。
The Project Proposal submitted by MTR Corporation Limited (MTRCL) is based on the ownership approach for the implementation of HSK Station project.

鐵路系統的建造成本 (按2018年12月價格計算) Capital Costs of Railway System (in December 2018 prices)	約 41 億元 About \$4.1 billion
經濟內部回報率 Economic Internal Rate of Return	12.5%

初步項目計劃 Preliminary Project Programme



謝謝

THANK YOU