

LegCo Joint Subcommittee to Monitor the Implementation of the West Kowloon Cultural District Project 立法會監察西九文化區計劃推行情況聯合小組委員會

立法會 CB(1)635/20-21(02)號文件

LC Paper No. CB(1)635/20-21(02)



Improvement of Connectivity of West Kowloon Cultural District
with its neighbouring district and Implementation of the
Infrastructure Works for the West Kowloon Cultural District,
Phase 1 Fourth Construction Package
加強西九文化區與鄰近地區的連接
及推展西九文化區基礎建設工程第一期第四組建造工程

westKowloon
西九文化區

2021-03-01

WKCD – A popular arts and cultural hub in the city

西九文化區 – 城中藝術文化新熱點



Existing and Planned Traffic and Transport Arrangements

目前和已規劃的交通及運輸設施

(a) Public Transport – Rail 公共交通 – 鐵路



(a) Public Transport – Rail (cont'd)

公共交通 – 鐵路 (續)

Signage Improvement on Roads and MTR Stations

改善馬路及地鐵站內的指示牌



(a) Public Transport – Rail (cont'd)

公共交通 – 鐵路 (續)

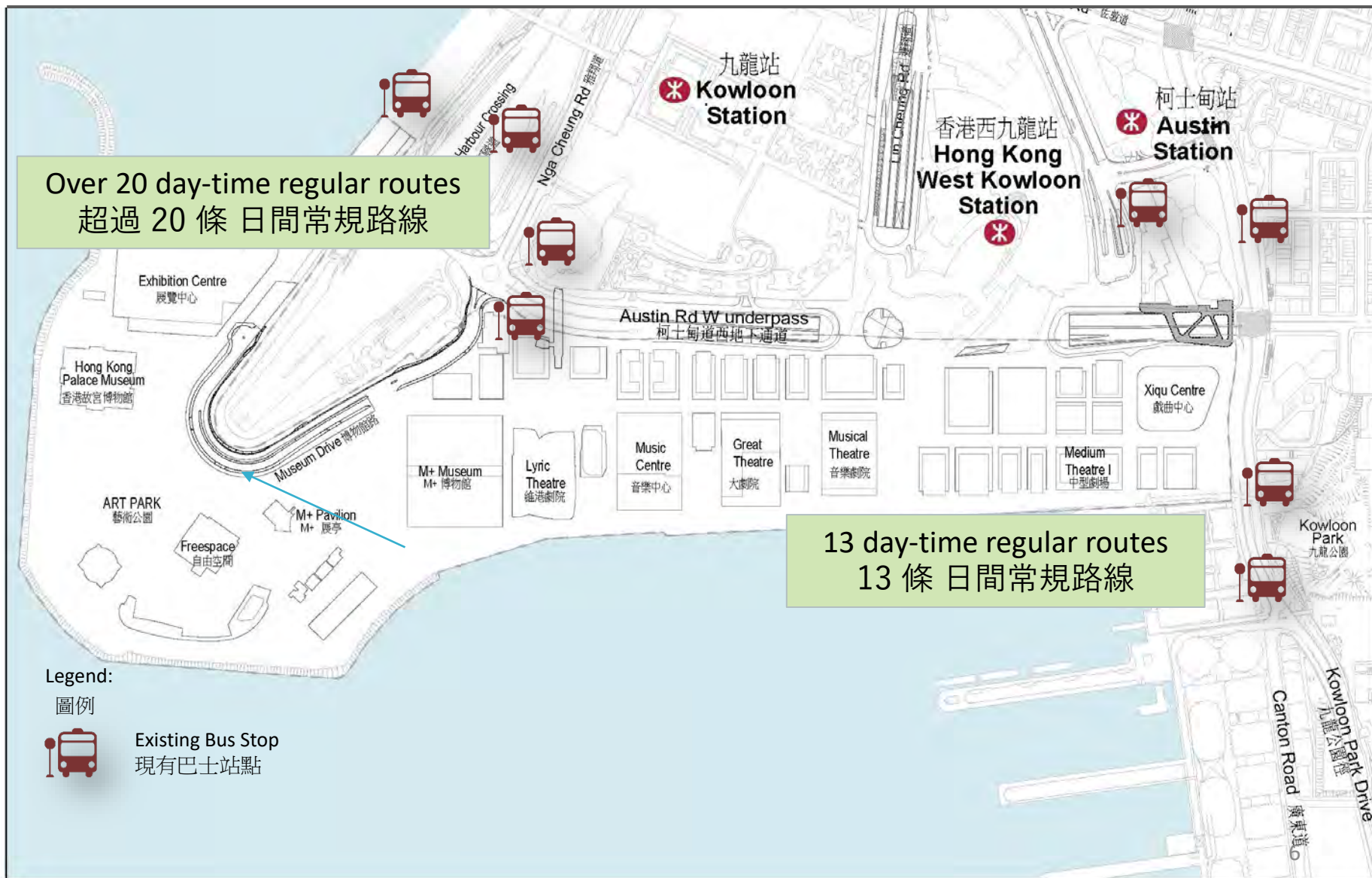
Austin Road
Pedestrian
Linkage System

柯士甸道
行人連接系統



(a) Public Transport – Bus Services

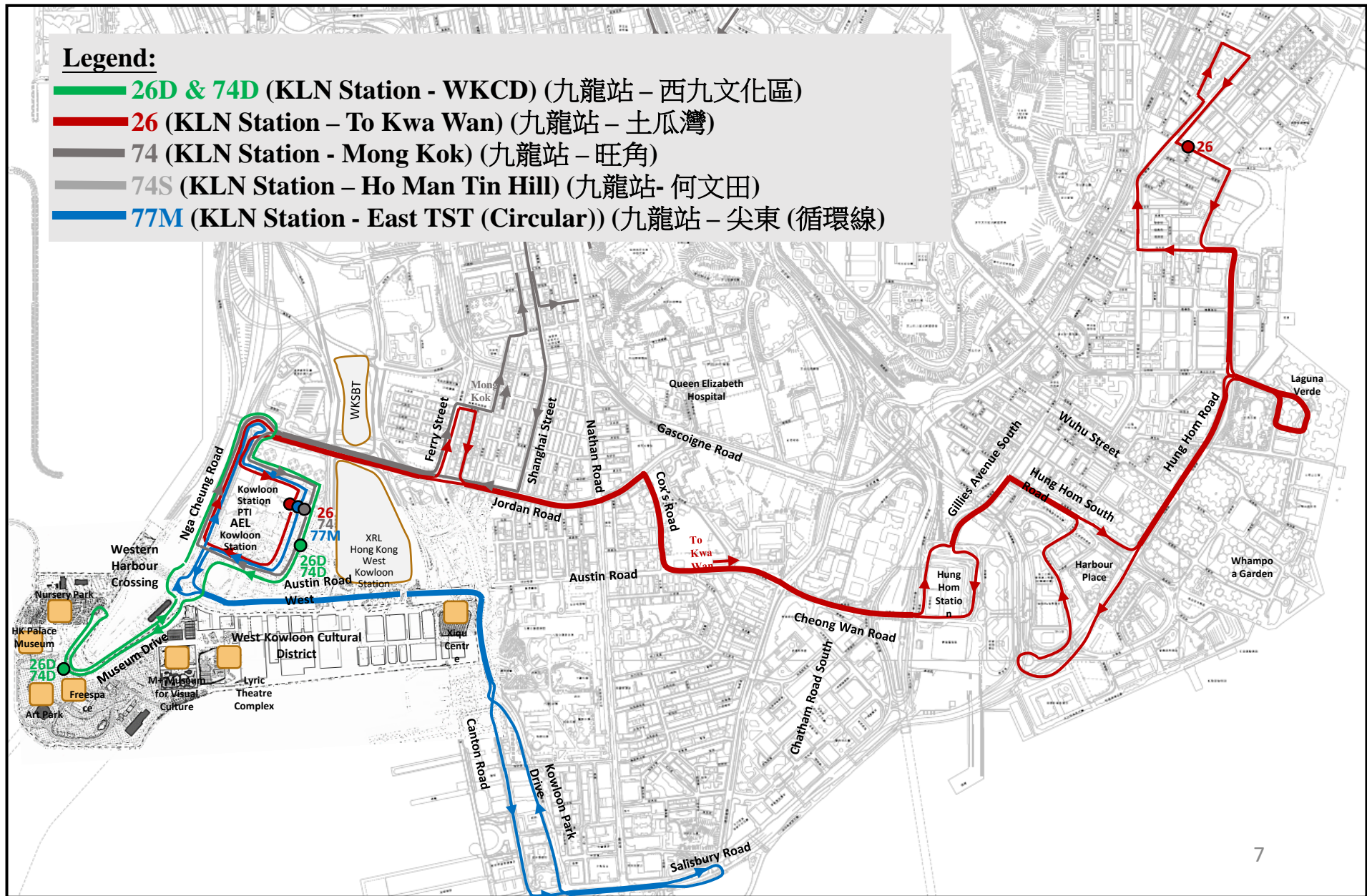
公共交通 – 巴士服務



(a) Public Transport – GMB Services

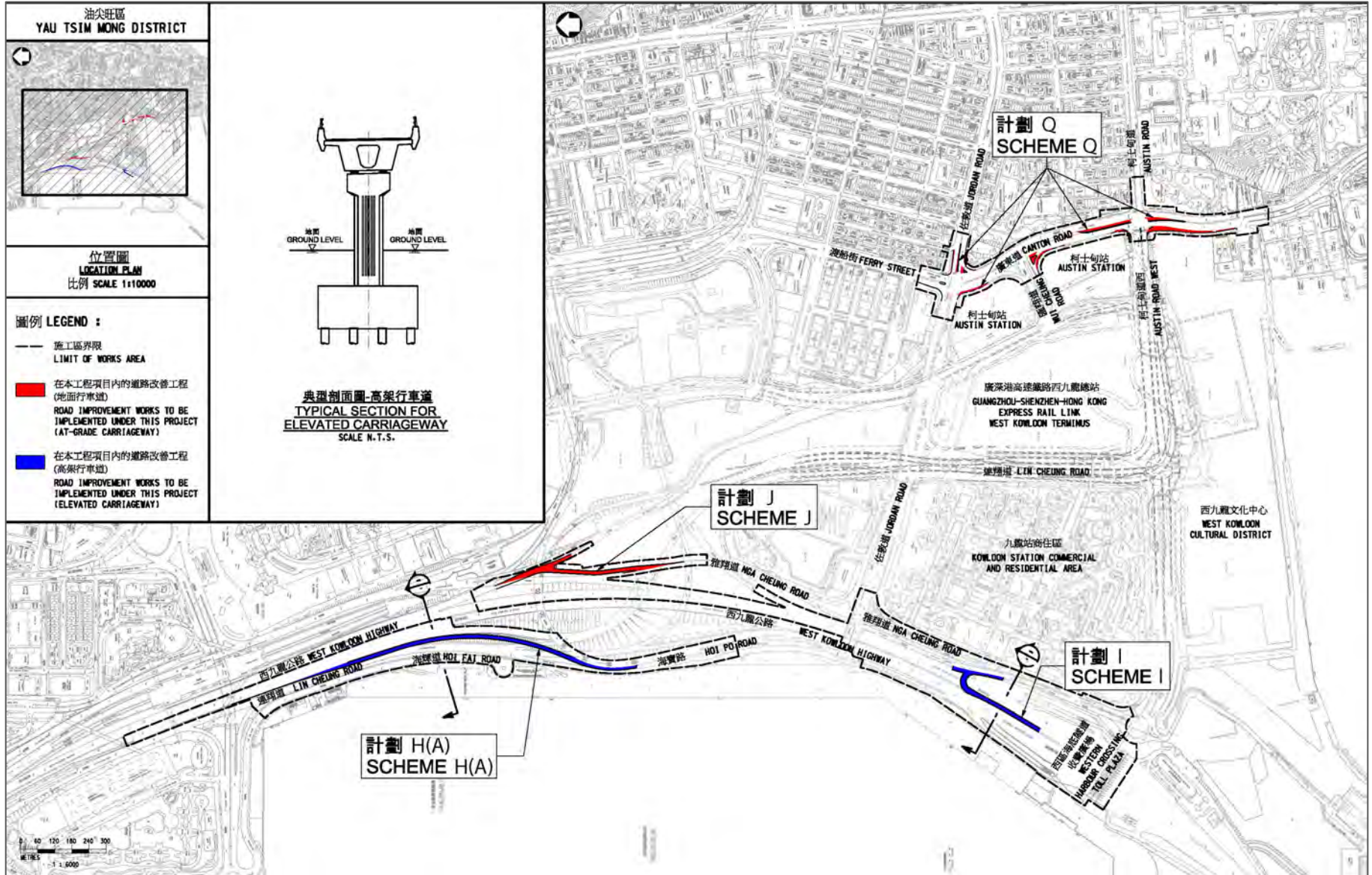
公共交通 – 專線小巴士服務

- Legend:**
- 26D & 74D (KLN Station - WKCD) (九龍站 - 西九文化區)**
 - 26 (KLN Station - To Kwa Wan) (九龍站 - 土瓜灣)**
 - 74 (KLN Station - Mong Kok) (九龍站 - 旺角)**
 - 74S (KLN Station - Ho Man Tin Hill) (九龍站 - 何文田)**
 - 77M (KLN Station - East TST (Circular)) (九龍站 - 尖東 (循環線))**



(b) Transport Infrastructures – Improvements outside WKCD

交通基建 - 西九文化區外的改善工程



Traffic Condition **before** Improvements

改善前的交通狀況



Traffic Condition after Improvements

改善後的交通狀況

Keep Left to Lin Cheung Road
via Existing Access Road
靠左經現有支路往連翔道

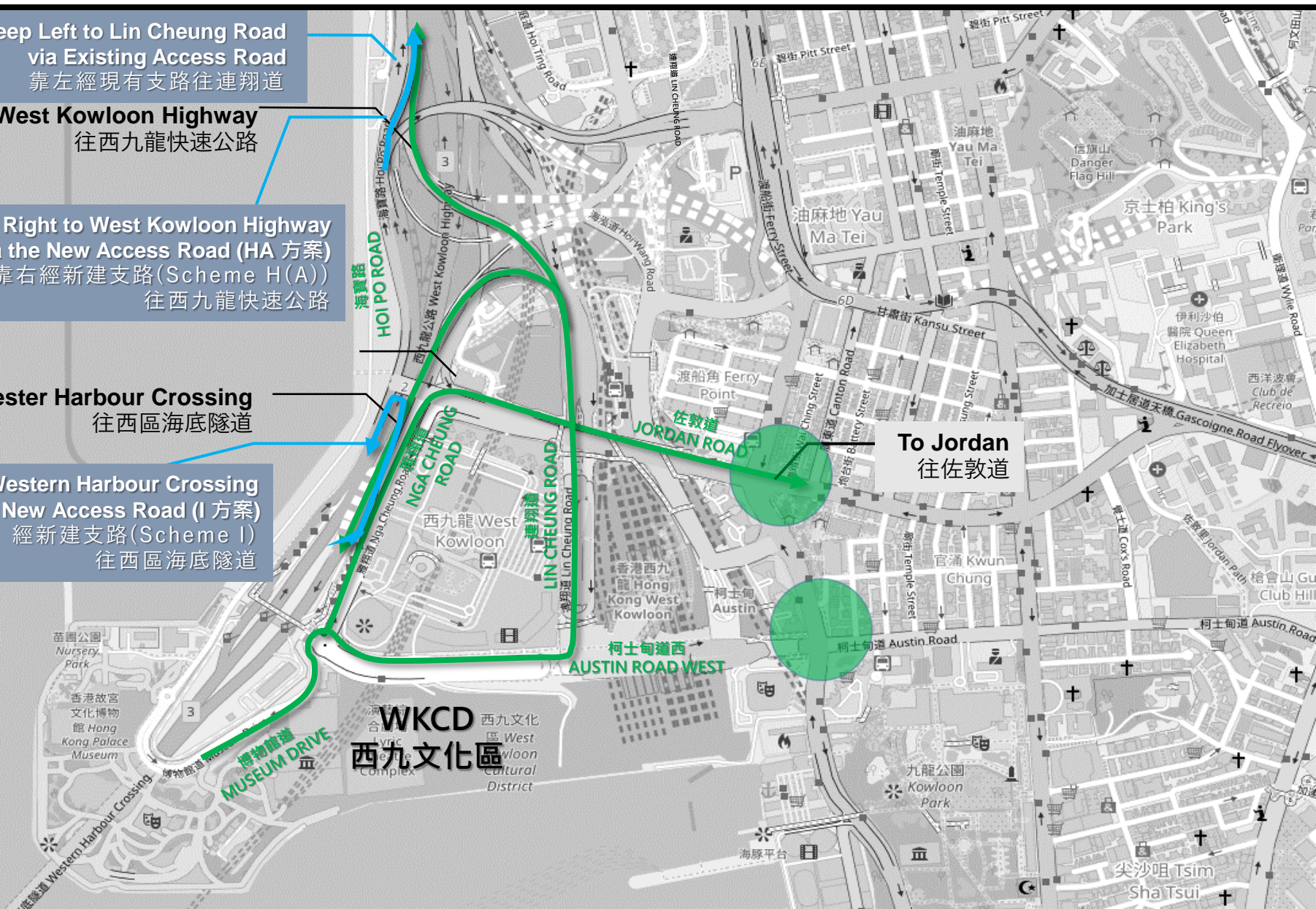
To West Kowloon Highway
往西九龍快速公路

Keep Right to West Kowloon Highway
via the New Access Road (HA 方案)
靠右經新建支路 (Scheme H(A))
往西九龍快速公路

To Western Harbour Crossing
往西區海底隧道

To Western Harbour Crossing
via the New Access Road (I 方案)
經新建支路 (Scheme I)
往西區海底隧道

To Jordan
往佐敦道

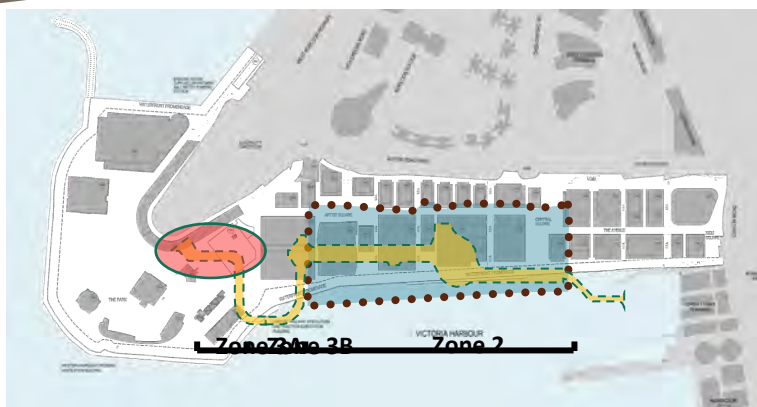


(b) Transport Infrastructures – Public Road within WKCD
交通基建 - 西九文化區內的公共道路



Taxi Stand, Car
and Taxi Pick-up
and Drop-off
的士站、私家車及
的士上落客位

Coach Pick-up
and Drop-off
旅遊巴士上落客位



The first Section of the Underground Road
in Zone 3A

位於3A區內第一段的地下行車道

(c) Existing Car Parking Provision

現有私家車停車場



(d) Mode of Transport within WKCD 西九文化區內的交通工具

Electric Autonomous Vehicle 電動智能自動車

- Since 2018
自2018年開始
- Over 16 000 participants
超過 16 000 人次
參與試坐



(d) Mode of Transport within WKCD (cont'd)

西九文化區內的交通工具(續)



SmartBike Services (Since 2015) by
Tung Wah Group of Hospitals BiciLine
Cycling Eco-Tourism Social Enterprise

東華三院BiciLine單車生態旅遊社會企業
營運的悠遊西九（2015至今）

- About 50 bikes
約50 部單車

Short and Medium Term Transport Strategies

短中期交通策略

(a) Public Transport – Water Taxis 公共交通 – 水上的士服務



Beautification of the Existing
Landing Facility to Receive
Water-taxi Service

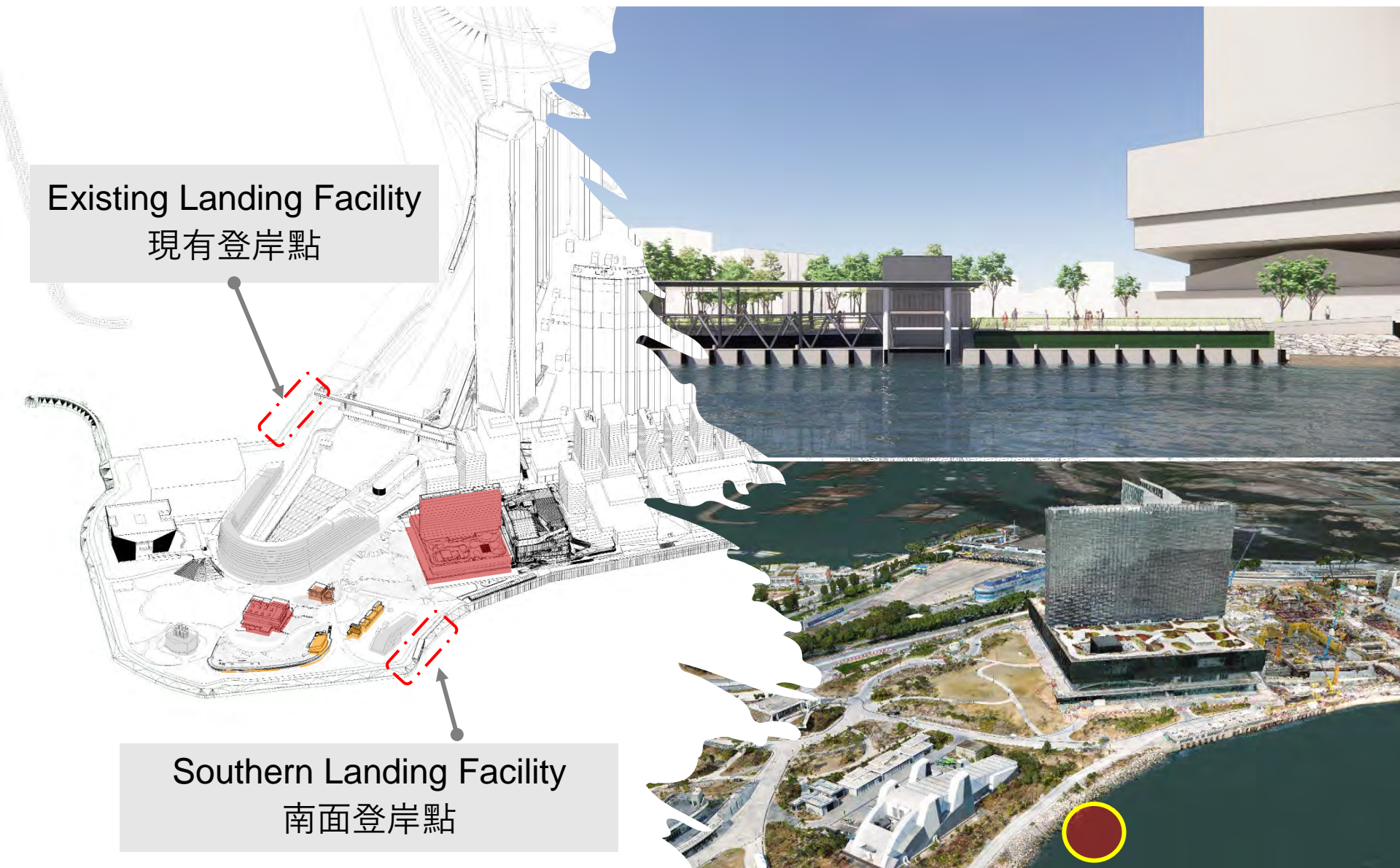
美化現有的登岸設施以配合
水上的士服務

(a) Public Transport - Proposed Southern Landing Facility 公共交通 – 建議的南面登岸設施

Existing Landing Facility
現有登岸點

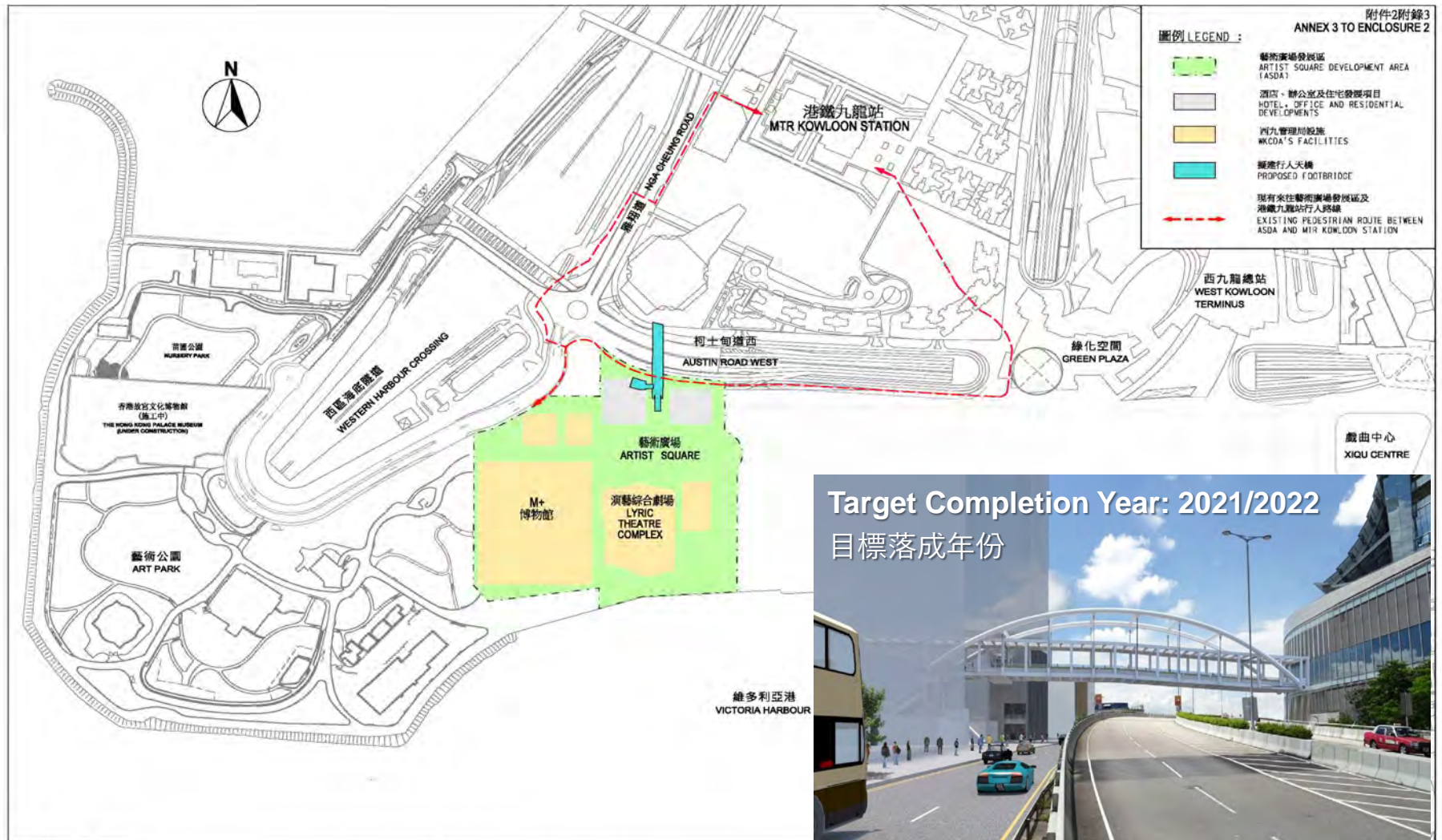
Southern Landing Facility
南面登岸點

Target Completion Year 目標落成年份: 2023/2024



(b) Highway and Pedestrian Infrastructure – Artist Square Bridge

道路及行人基建- 藝術廣場天橋

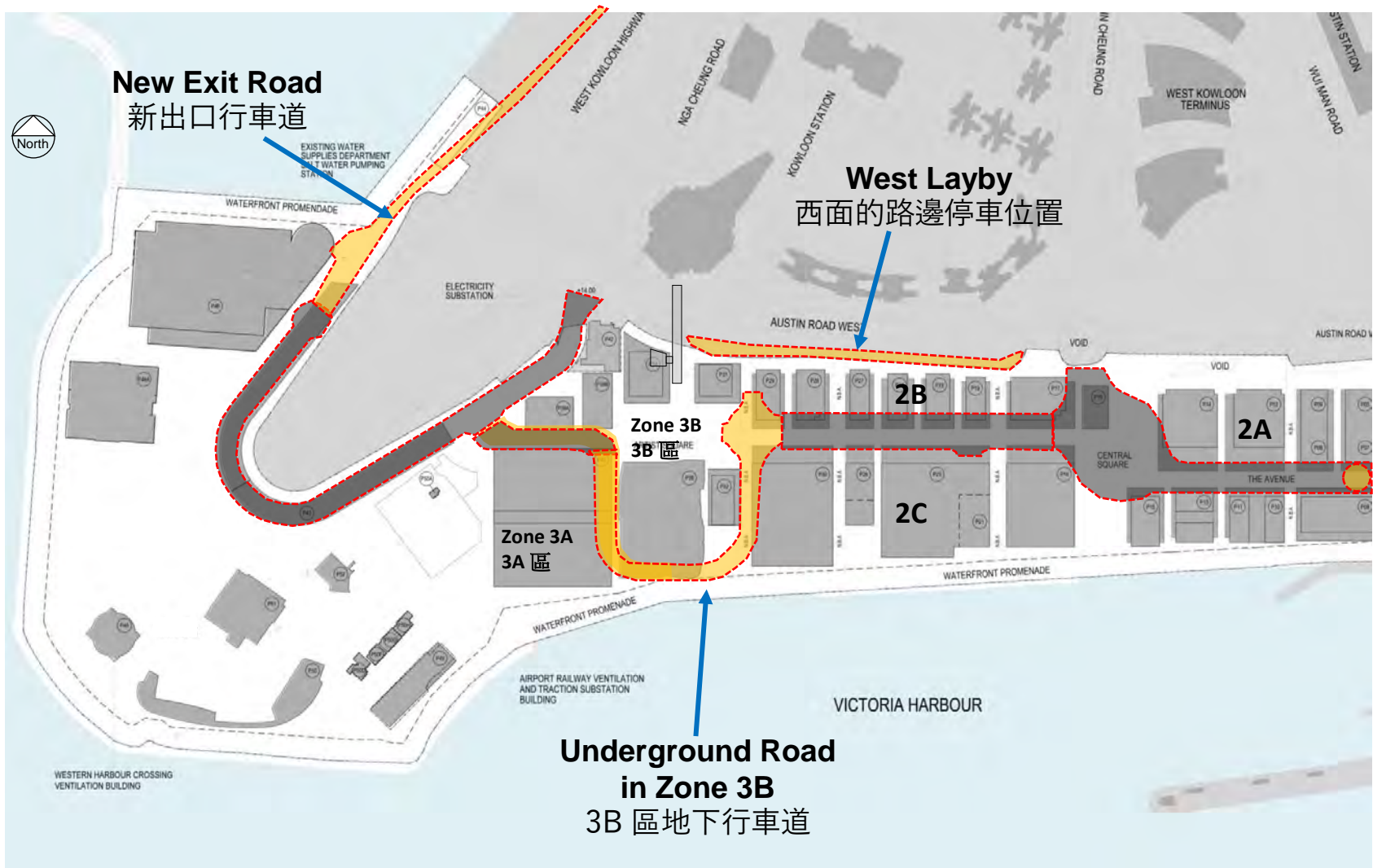


項目名稱 PROJECT TITLE
 7754CL號(部分) - 西九文化區基礎建設工程第一期 - 第三組建造工程
 7754CL(PART) - INFRASTRUCTURE WORKS FOR WEST KOWLOON CULTURAL DISTRICT,
 PHASE 1 - THIRD CONSTRUCTION PACKAGE

藝術廣場發展區
 ARTIST SQUARE DEVELOPMENT AREA

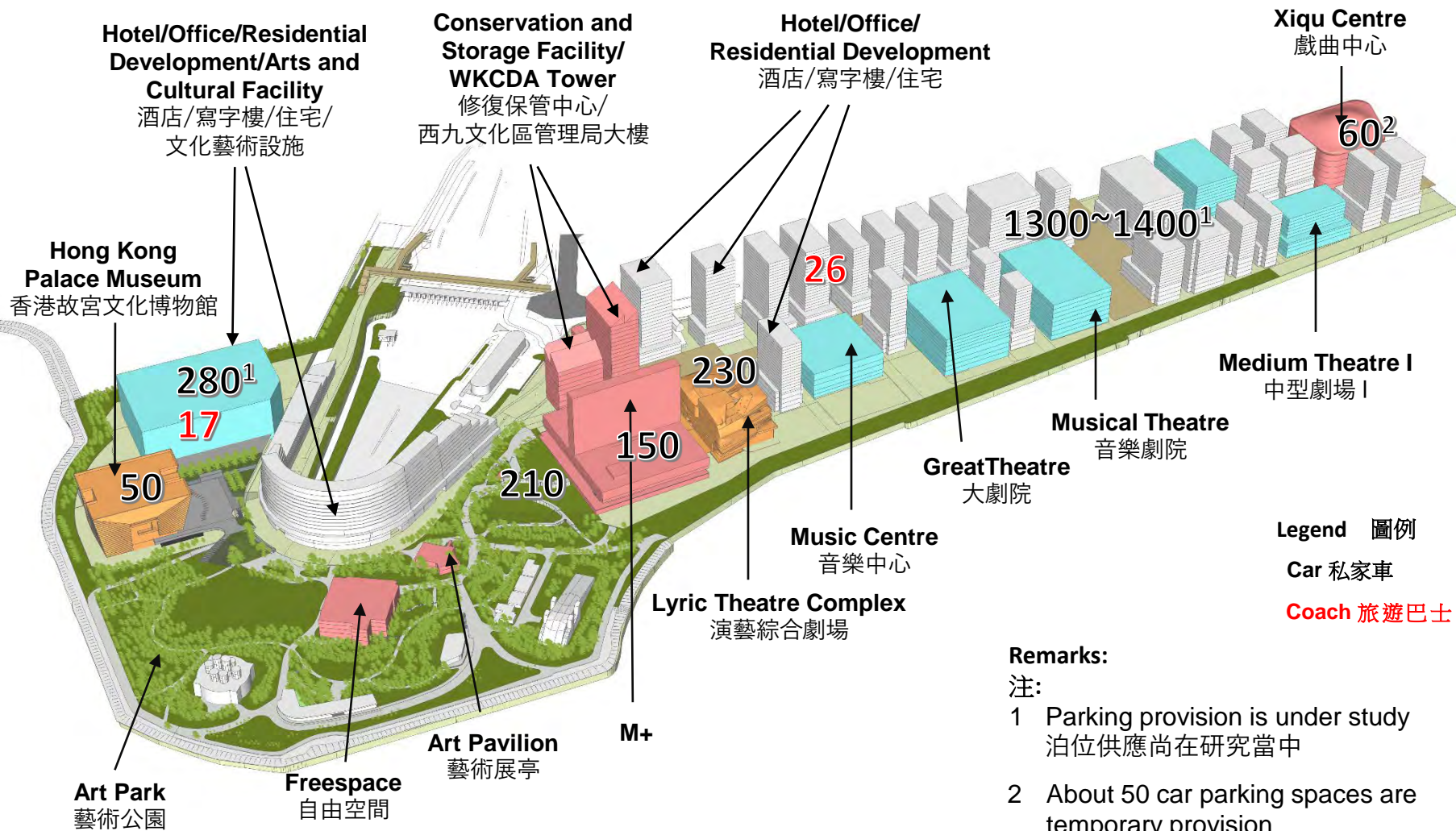
比例 SCALE
 不按比例
 Not to scale

(b) Highway and Pedestrian Infrastructure (Cont'd)
– New Exit Road, West Layby and Underground Round in Zone 3B
道路及行人基建(續) – 新出口行車道、西面的路邊停車位置及3B區的地下行車道

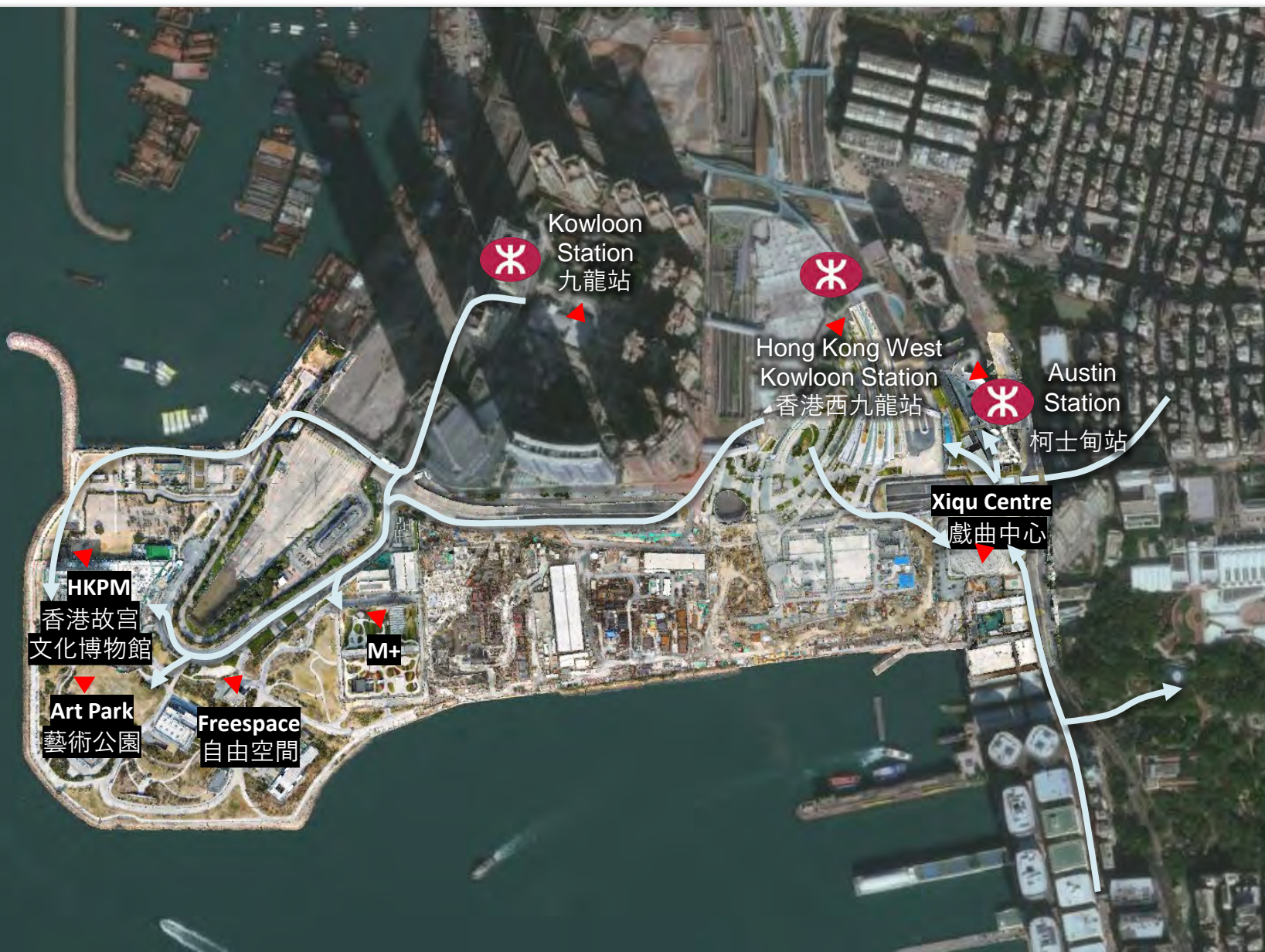


(c) Planned Private Car and Coach Parking Provision

已規劃私家車和旅遊巴士停泊設施



(d) Pedestrian Walking Experience and Wayfinding
行人的步行體驗及方向標誌



Future Pedestrian Connections

未來行人連接





Thank You

westKowloon
西九文化區