

**For discussion
on 10 May 2021**

Legislative Council Panel on Development

PWP Item No. 347WF – Reprovisioning of Harcourt Road Fresh Water Pumping Station

PURPOSE

This paper briefs Members on our proposal to upgrade **347WF** to Category A, entitled “**Reprovisioning of Harcourt Road Fresh Water Pumping Station**”, at an estimated cost of \$555.4 million in money-of-the-day (MOD) prices to relocate the existing Harcourt Road fresh water pumping station (HRFWPS) to vacate the existing site of the pumping station for the proposed development of a new High Court (HC).

PROJECT SCOPE

2. The scope of works under **347WF** comprises –
 - (a) construction of a new underground fresh water pumping station with a pumping capacity of about 155 000 cubic metres (m³) per day and its associated structures as well as reprovisioning of a new playground at the site of the existing Lockhart Road Playground (LRPG);
 - (b) laying of about 700 metres (m) of fresh water mains with diameter ranging from 600 millimetres (mm) to 1 000 mm; and
 - (c) demolition of the existing HRFWPS after commissioning of the new fresh water pumping station.

3. A layout plan showing the proposed works is at **Enclosure 1**.

4. We plan to commence the proposed works by end 2021 upon obtaining funding approval from the Finance Committee (FC) for target completion in around six years.

JUSTIFICATION

5. The HRFWPS was commissioned in 1988 to booster-pump the fresh water supply from the Kowloon side to the Gardens fresh water service reservoir and the Bowen Road fresh water service reservoir for the supply to Central, Wan Chai, the Mid-levels and the Peak areas.

6. As announced in the Policy Address in October 2017, the Government planned to construct a new HC building at Site 5 and the site south of Site 5 (South Site) at the new Central Harbourfront to re-provision the existing HC in Admiralty. As the existing HRFWPS building is located within the South Site, relocation of the pumping station is necessary to pave way for implementing the proposed development of the new HC.

7. The identified site at LRPG is considered appropriate given its close proximity to the existing inlet and outlet water mains of the HRFWPS. Substantial parts of the new pumping station will be constructed underground, with the essential parts at grade occupying about 10% of the LRPG floor area. The proposed re-provisioned new LRPG co-located at the same site will encompass enhanced facilities with a standard-sized basketball court with a spectator stand¹ amongst others². After the new pumping station is commissioned, the existing HRFWPS will be demolished.

FINANCIAL IMPLICATIONS

8. We estimate the cost of the proposed works to be \$555.4 million in MOD prices.

PUBLIC CONSULTATION

9. We consulted the Development, Planning and Transport Committee (DPTC) of Wan Chai District Council on 11 April 2017 regarding

¹ The basketball court of the existing playground is sub-standard without spectator stand.

² Apart from re-provisioning of children's play equipment, an elderly fitness station, a toilet block, landscaped sitting-out area, the new LRPG will also comprise a multi-purpose activities area and a baby care room, which are not provided in the existing playground.

the site selection for reprovisioning the HRFWPS to LRPG. Members of the DPTC raised no objection to the proposal. On 11 December 2018, we briefed members of the DPTC on the design proposals of the new LRPG and noted that the members expressed no strong view on the design options. In 2018 and 2019, we conducted public consultation to ensure that the project is well received by the public through various means including exhibition boards at LRPG, project website and online survey, focus group forums and workshops, and public forums to gather opinions and comments from the public on the project. These opinions and comments have been taken into account in the detailed design of the project and for fine-tuning any design details as well as the temporary closure arrangement of LRPG during the course of construction.

ENVIRONMENTAL IMPLICATIONS

10. The proposed works are not regarded as a designated project under Schedule 2 of the Environmental Impact Assessment Ordinance (Cap. 499). We have carried out a Preliminary Environmental Review (PER) for the proposed works. The PER concluded that the project would not have any long-term environmental impacts. We will incorporate the mitigation measures recommended in the PER into the works contract to control the environmental impacts arising from the construction works to within established standards and guidelines. These measures include frequent watering of the site, provision of wheel-washing facilities, covering of materials on trucks and use of silenced construction plant. We have included in the project estimate the cost for the implementation of these mitigation measures.

11. At the planning and design stages, we have optimised the design and layouts to reduce the generation of construction waste. In addition, we will require the contractor to reuse inert construction waste (e.g. demolished concrete and excavated soil and rock) on site or in other suitable construction sites as far as possible, in order to minimize the disposal of inert construction waste at public fill reception facilities³. We will encourage the contractor to maximise the use of recycled or recyclable inert construction waste, and the use of non-timber formwork to further reduce the generation of construction waste where possible.

12. At the construction stage, we will require the contractor to

³ Public fill reception facilities are specified in Schedule 4 of the Waste Disposal (Charges for Disposal of Construction Waste) Regulation. Disposal of inert construction waste at public fill reception facilities requires a licence issued by the Director of Civil Engineering and Development.

submit for approval a plan setting out the waste management measures, which will include appropriate mitigation means to avoid, reduce, reuse and recycle inert construction waste. We will ensure that the day-to-day operations on site comply with the approved plan. We will require the contractor to separate the inert portion from non-inert construction waste on site for disposal at appropriate facilities. We will control the disposal of inert and non-inert construction waste at public fill reception facilities and landfills respectively through a trip-ticket system.

13. We estimate that the proposed works will generate in total 78 350 tonnes of construction waste. Of these, we will reuse 14 270 tonnes (18%) of inert construction waste on site and deliver 59 490 tonnes (76%) of inert construction waste to public fill reception facilities for subsequent reuse. We will dispose of the remaining 4 590 tonnes (6%) of non-inert construction waste at landfills. The total cost for disposal of construction waste at public fill reception facilities and landfills is estimated to be \$5.1 million for this project (based on a unit charge rate of \$71 per tonne for disposal at public fill reception facilities and \$200 per tonne at landfills as stipulated in the Waste Disposal (Charges for Disposal of Construction Waste) Regulation).

HERITAGE IMPLICATIONS

14. The project will not affect any heritage site, i.e. all declared monuments, proposed monuments, graded historic sites or buildings, sites of archaeological interest and Government historic sites identified by the Antiquities and Monuments Office.

LAND ACQUISITION

15. The proposed works do not require any land acquisition.

TRAFFIC IMPLICATIONS

16. We have carried out a traffic impact assessment (TIA) for the proposed works. In the TIA report, it is proposed to implement appropriate temporary traffic arrangement (TTA) to minimise impact on the traffic in the areas concerned. At the construction stage, we will establish a traffic management liaison group and closely liaise with the Hong Kong Police Force, the Transport Department and other relevant departments to discuss,

scrutinise and review the proposed TTA with a view to minimising the traffic impact arising from the construction works. Moreover, the completed project would not cause any significant impact on the traffic during the operation stage.

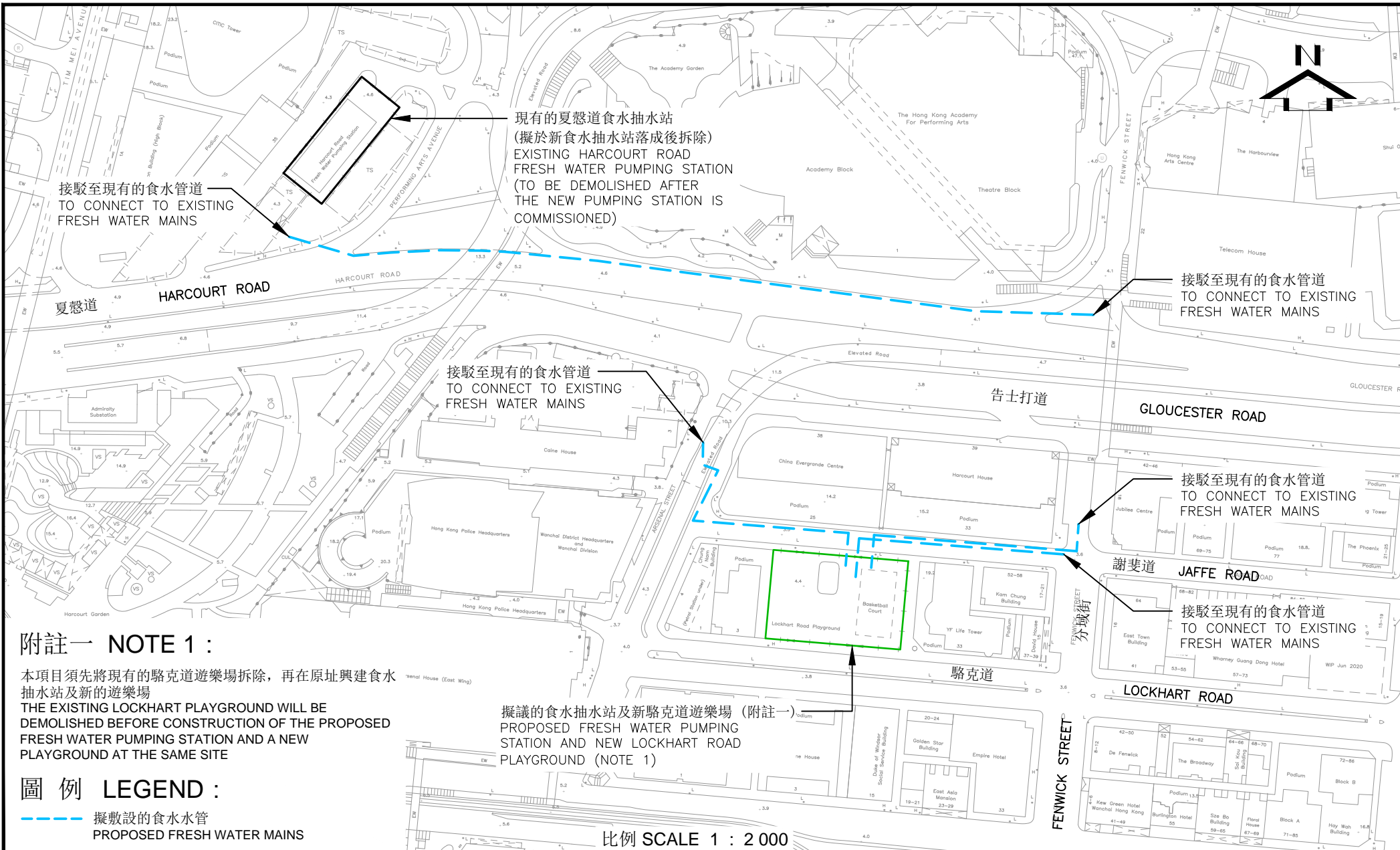
BACKGROUND

17. We upgraded **347WF** to Category B in September 2010.
18. In June 2011, we included an item under block allocation Subhead 9100WX “Waterworks, studies and investigations for items in Category D of the Public Works Programme”. The Category D item is at an estimated cost of \$12.00 million in MOD prices for carrying out ground investigation and engagement of consultants to undertake the traffic impact assessment study, landscape and layout design, public engagement exercise and BEAM Plus accreditation.
19. We consulted the Panel on Development on 27 May 2014 for relocating the HRFWPS to a site near the Central Fire Station on Cotton Tree Drive. Members expressed concerns on the potential impact of the project on an existing old stone wall and trees in the vicinity and a resolution was made suggesting the Administration to identify alternative site for the project.

WAY FORWARD

20. We will seek support from the Public Works Subcommittee for submitting the funding approval to the FC for upgrading **347WF** to Category A. We will invite tenders in parallel to enable early commencement of the proposed works, and will only award the contract after obtaining FC’s funding approval.

Development Bureau
Water Supplies Department
May 2021



接駁至現有的食水管
TO CONNECT TO EXISTING
FRESH WATER MAINS

現有的夏慤道食水抽水站
(擬於新食水抽水站落成後拆除)
EXISTING HARCOURT ROAD
FRESH WATER PUMPING STATION
(TO BE DEMOLISHED AFTER
THE NEW PUMPING STATION IS
COMMISSIONED)

接駁至現有的食水管
TO CONNECT TO EXISTING
FRESH WATER MAINS

接駁至現有的食水管
TO CONNECT TO EXISTING
FRESH WATER MAINS

接駁至現有的食水管
TO CONNECT TO EXISTING
FRESH WATER MAINS

接駁至現有的食水管
TO CONNECT TO EXISTING
FRESH WATER MAINS

附註一 NOTE 1 :

本項目須先將現有的駱克道遊樂場拆除，再在原址興建食水抽水站及新的遊樂場
THE EXISTING LOCKHART PLAYGROUND WILL BE DEMOLISHED BEFORE CONSTRUCTION OF THE PROPOSED FRESH WATER PUMPING STATION AND A NEW PLAYGROUND AT THE SAME SITE

擬議的食水抽水站及新駱克道遊樂場 (附註一)
PROPOSED FRESH WATER PUMPING STATION AND NEW LOCKHART ROAD PLAYGROUND (NOTE 1)

圖例 LEGEND :

--- 擬敷設的食水管
PROPOSED FRESH WATER MAINS

比例 SCALE 1 : 2 000

工務工程編號 347WF --- 夏慤道食水抽水站重置工程
P.W.P. Item No. 347WF --- Reprovisioning of Harcourt Road Fresh Water Pumping Station

水務署
WATER SUPPLIES DEPARTMENT

草圖編號 SK 62021 / 020

附件一 ENCLOSURE 1