



Strategy and Overall Target

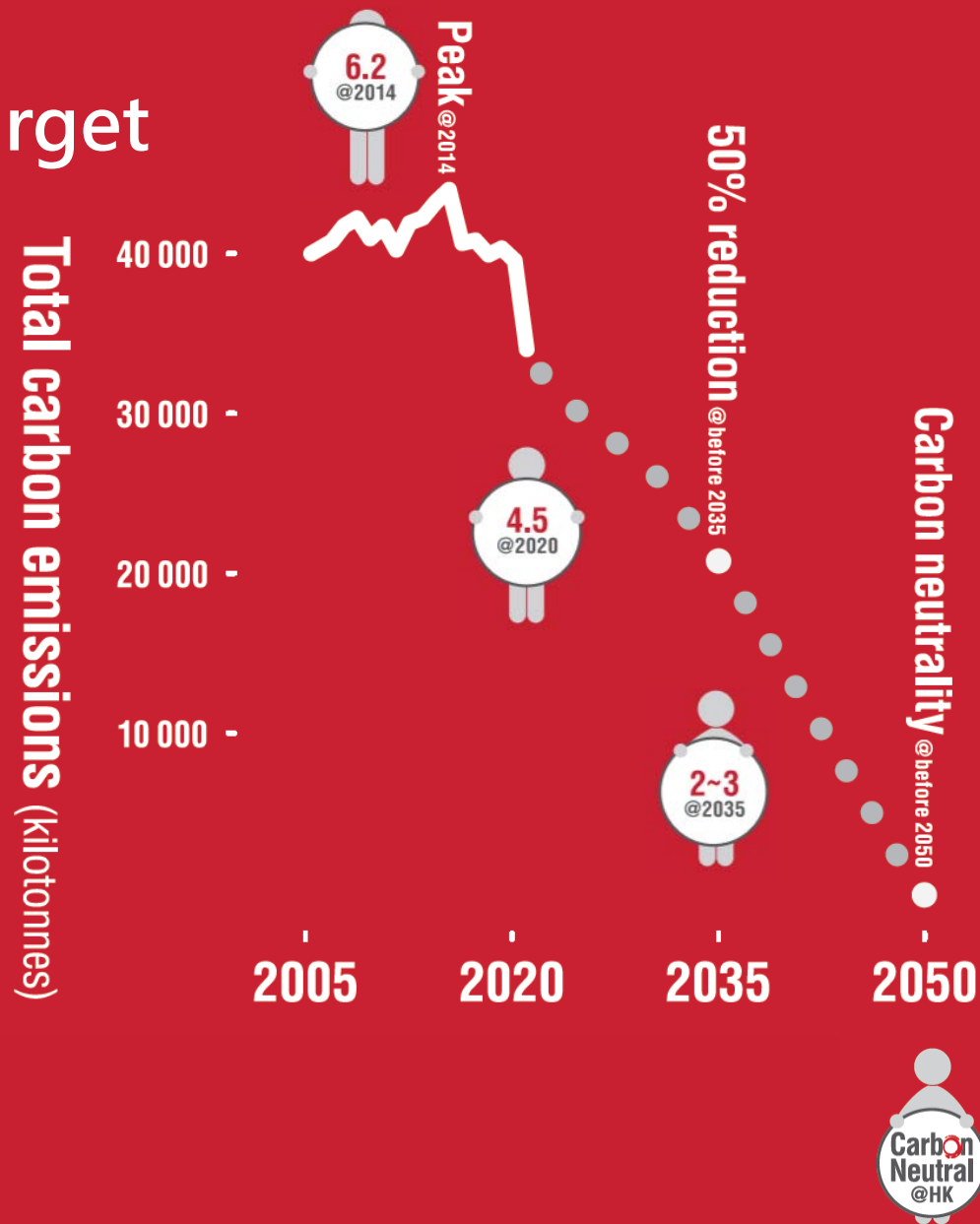
Steering Committee
on Climate Change and
Carbon Neutrality

Climate budget
In the next 15 to 20 years
devote about \$240 billion

Office
of Climate Change
and Carbon Neutrality

Advisory committee

Public engagement



Four Decarbonisation Strategies



Net-zero Electricity Generation

Phase out coal for daily electricity generation
Increase the share of renewable energy
Trial of new energy for electricity generation
Regional cooperation on zero-carbon energy

Energy Saving and Green Buildings

Set ambitious energy saving targets
Strengthen regulation and smart management

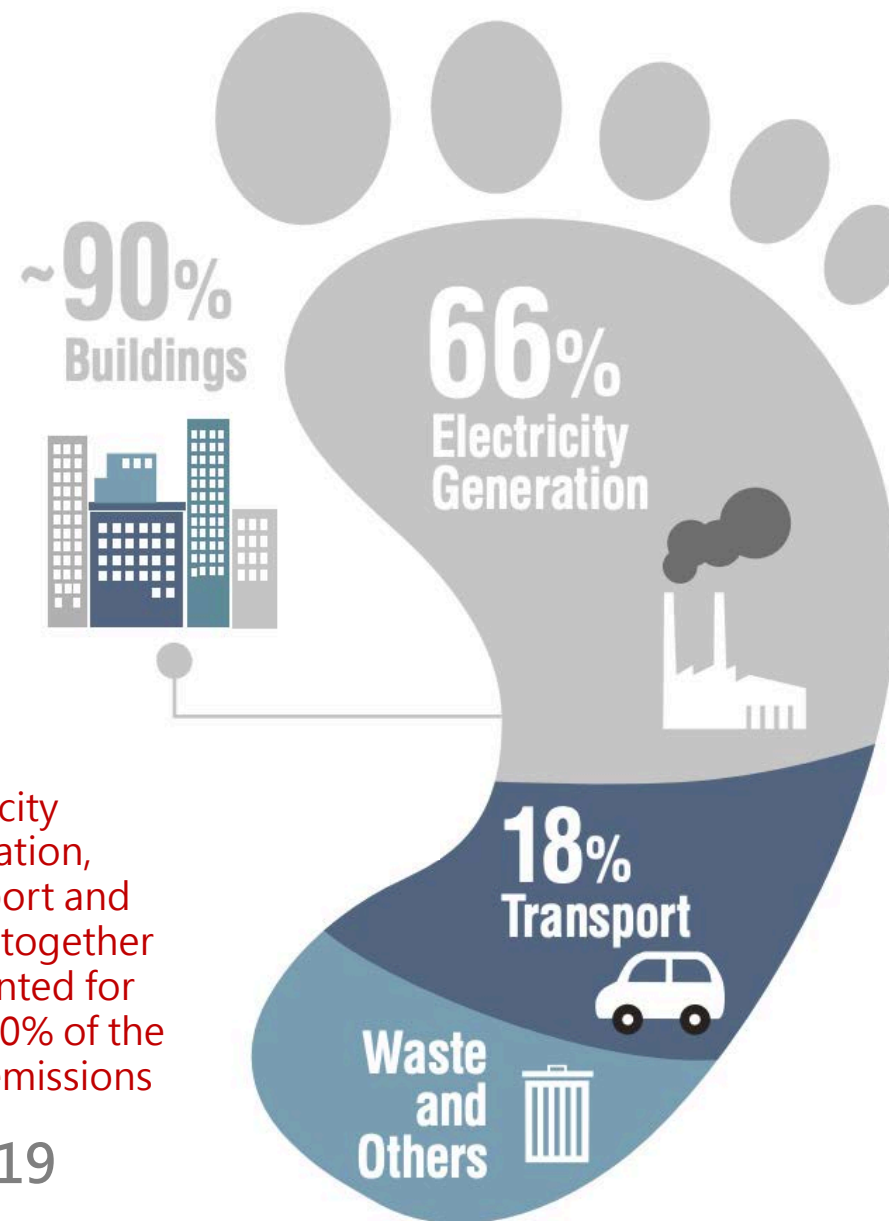
Green Transport

Trial of hydrogen fuel cell
electric buses and heavy vehicles

Waste Reduction

Municipal solid waste charging
Regulate disposable plastic tableware
Develop waste-to-energy facilities

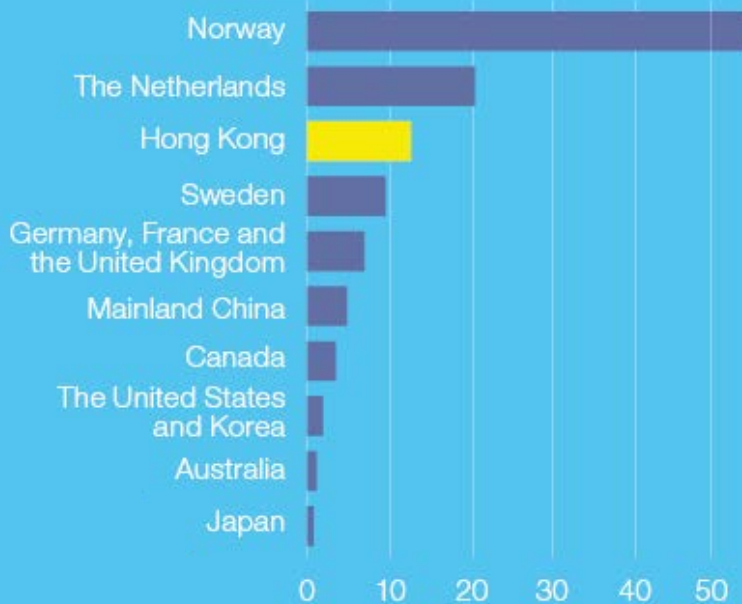
Sources of Carbon Emissions in Hong Kong



Hong Kong
**ROADMAP ON
POPULARISATION
OF ELECTRIC
VEHICLES**
March 2021



Electric private car market shares of major economies



(%)

@2020



One out of every five newly registered PCs is an EV

Major policies and measures

New energy vehicles

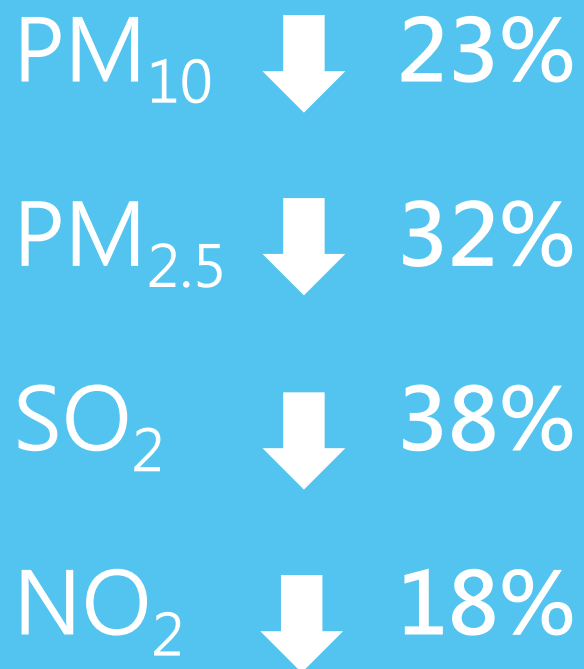
Promoting electric and new energy public transport and commercial vehicles (Including a trial of electric taxi)

EV public chargers app

Launch a mobile app on EV public chargers next year



Enhancing air quality



2017 - 2020

Major policies and measures

Air Quality Objectives (AQO)

A new round of AQOs review
(to complete in 2023)

Smart air quality monitoring system

Provide the public with more detailed district-based
air quality information

Hydrofluorocarbons (HFCs)

Progressively phasing down local consumption
(to mitigate climate change)

February 2021

WASTE BLUEPRINT for Hong Kong 2035



GREEN@COMMUNITY

Strengthen Community Waste Reduction and Recycling Support

Since 2020

- 22 Recycling Stores
 - 100+ Recycling Spots
- have commenced operations

Hundreds of thousands of public to visit and participate in clean recycling every month

Achievement of the whole community recycling network
>1 000tonnes of recyclables every month

Major policies and measures

Municipal Solid Waste (MSW) Charging

Embark on the preparatory work for the implementation of MSW charging.

Enhanced Synergy

For enhanced synergy, EPD will prepare to take over the management of refuse collection points and household waste collection services from the Food and Environmental Hygiene Department, **bringing the collection, recycling, delivery and treatment of waste under the same umbrella.**

Community Recycling

- Expand the pilot schemes on central collection services for food waste and waste plastics
- Double the number of Reverse Vending Machines (RVMs) for recycling of plastic beverage containers
- Increase smart recycling facilities / set up 10 more Recycling Stores

Go Plastic-free

- Producer Responsibility Scheme on Plastic Beverage Containers
- Reduce single-use plastics by the regulation of disposable plastic tableware





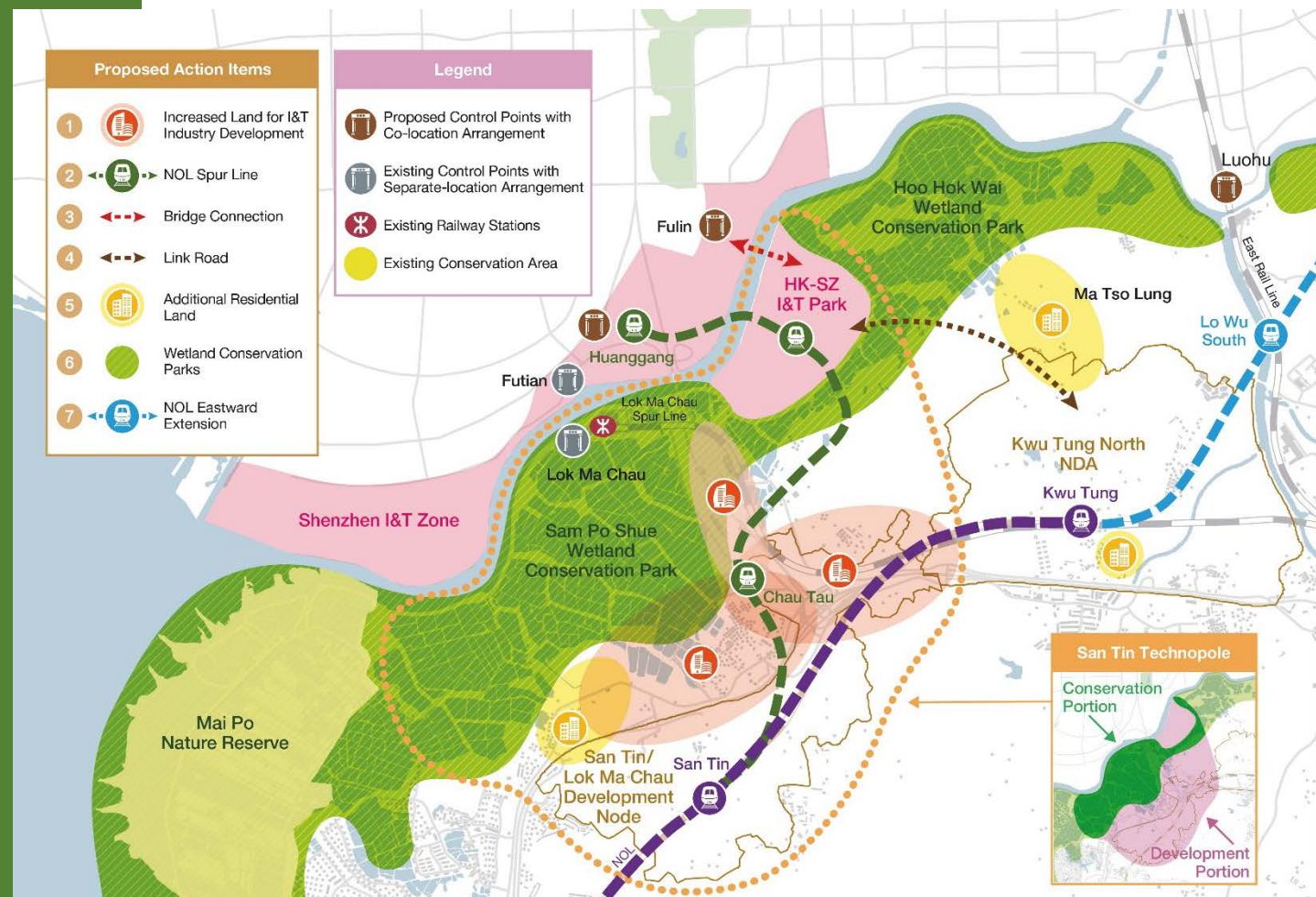
NATURE CONSERVATION

Major policies and measures

Proactive
Conservation
Policy
@Northern
Metropolis

Enhance the
Public Private
Partnership
Scheme

Enhance the Public Private
Partnership Scheme under
the New Nature Conservation
Policy (promulgated in 2004)





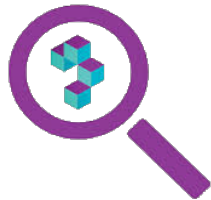
Review of Environmental Impact Assessment Process



Streamlined
process



New assessment
approaches and
philosophy



Projects with genuine
concerns



Timely &
useful advice

Streamline the Process
Enhance Efficiency
Focus on Environmental Outcome

Building a Bright Future Together