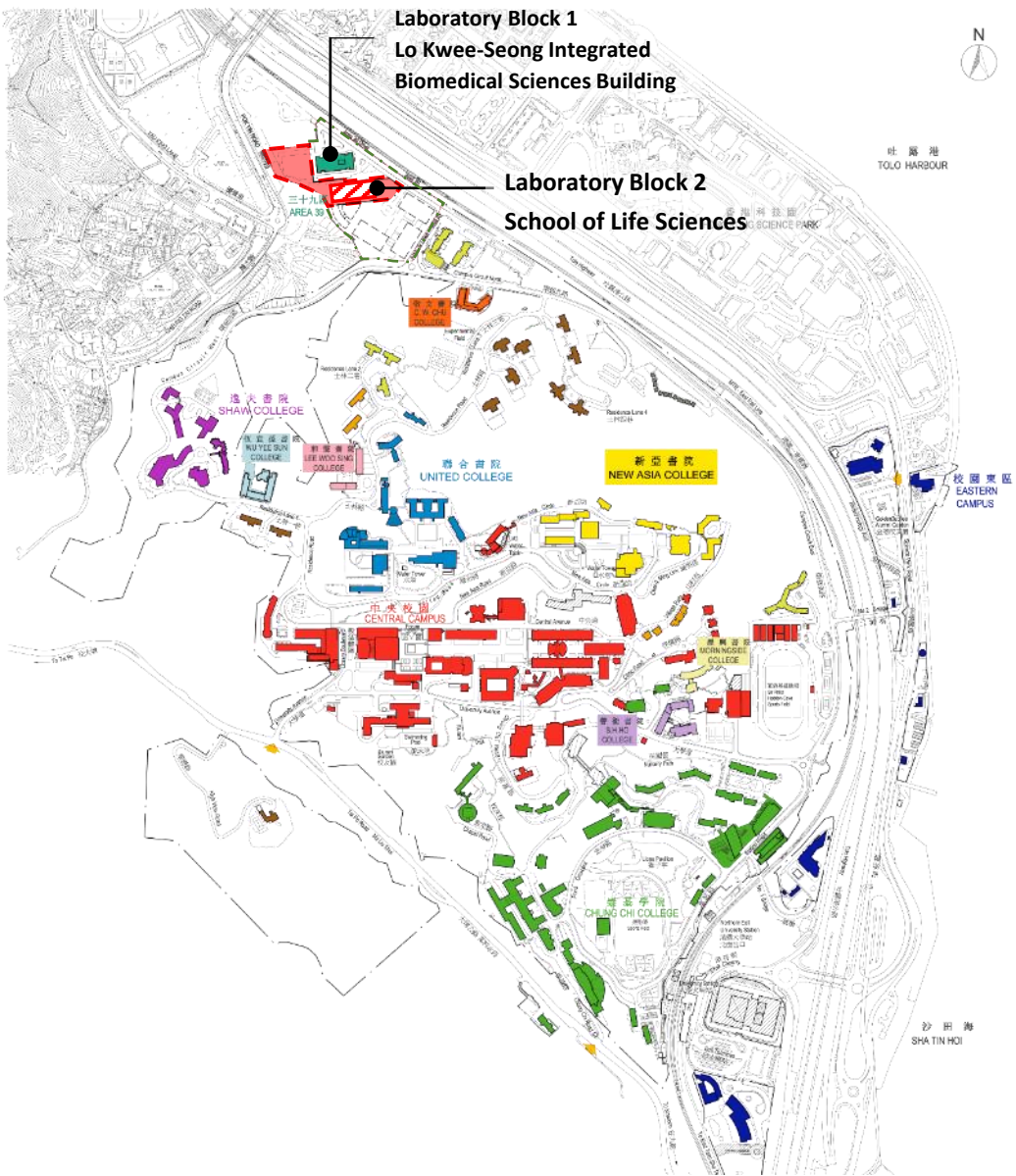
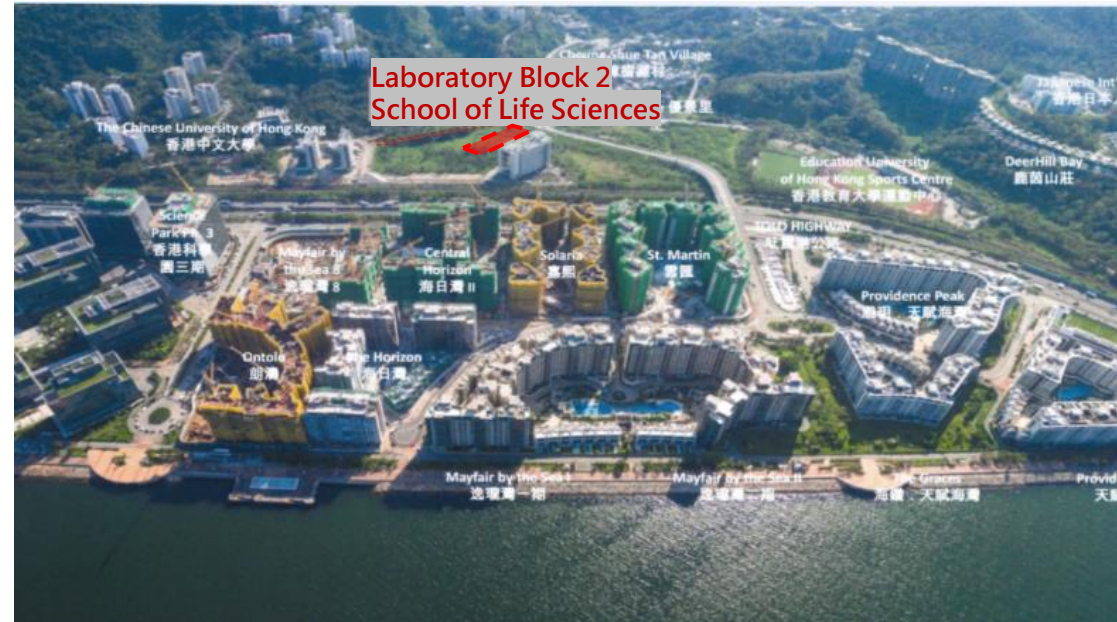
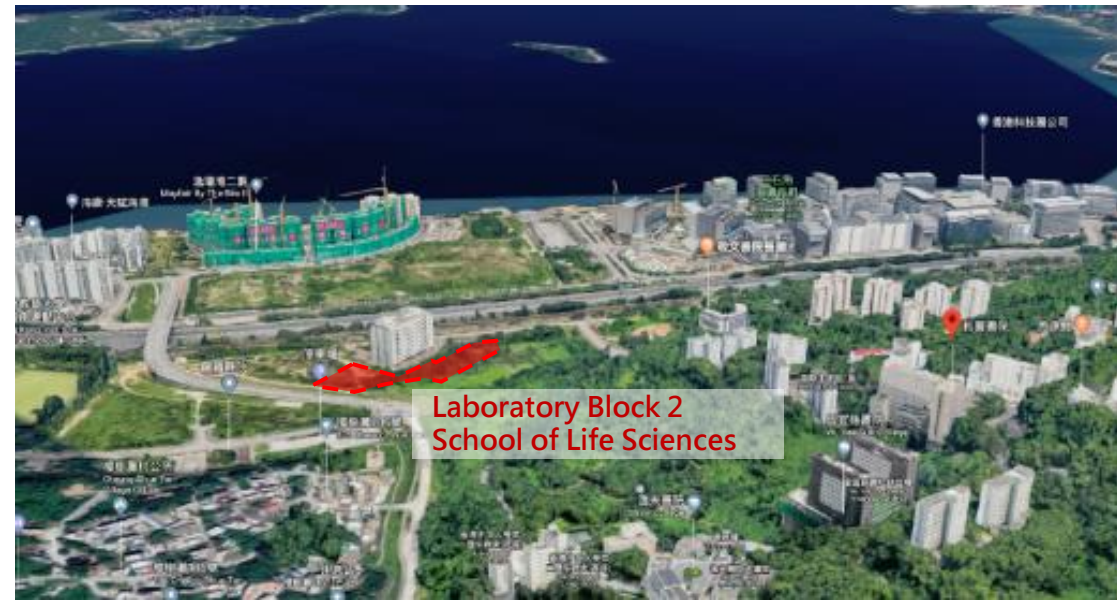


**8056EF - Centralised General Research Laboratory Complex (Block 2)  
The Chinese University of Hong Kong**



**CUHK CAMPUS PLAN**



**AERIAL PHOTO**

# Objectives

- To provide research infrastructure for **Environment and Sustainability** and **Translational Biomedicine**
- To support the Government' s goal to develop Hong Kong into an international innovation and technology hub

# Main User

- The School of Life Sciences of Faculty of Science and the State Key Laboratory of Agrobiotechnology





# Excellent Scientific Achievements

## • Environment and Sustainability

Application of Biotechnology for the challenges of climate change

- Professor H M Lam of School of Life Sciences and Director of State Key Laboratories led to the discovery of stress/drought tolerant soybean that can grow in marginal land
- To develop an international hub on climate-smart agriculture



## • Translational Biomedicine

To understand and develop new treatments for human diseases

- To Illuminates Pathogenic Pathways of Spinocerebellar Ataxias ; Enabling New Therapeutic Directions
- Inter-disciplinary Research Team Finds Novel Drug Candidate for Rare Neurological Diseases; A patent application protecting this technology has been allowed by the respective Patent and Trademark Office.

# Centralised General Research Laboratory Complex (Block 2)



**Block Plan**



**View from Northeast**



**View from Southeast**



# Centralised General Research Laboratory Complex (Block 2)

## Legend 圖例

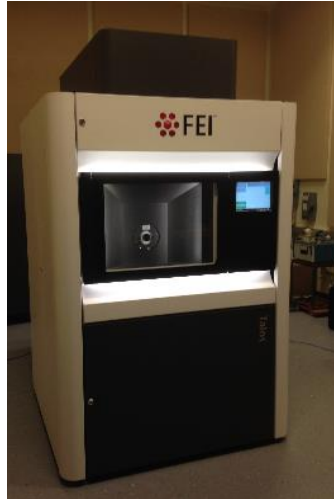
- RESEARCH LABORATORY 研究用實驗室
- OFFICE 教職員辦公室
- CIRCULATION 通道
- PLANT ROOM 機房
- ACCESSIBLE TOILET 暢通易達洗手間
- ACCESSIBLE LIFT 暢通易達升降機
- PASSENGER LIFT 客用升降機
- SERVICE LIFT 送貨升降機
- VERTICAL GREEN 直線化垂
- BARRIER FREE ACCESS 無障礙通道



**Section 1-1**

# State-of-the-art equipment and facilities :

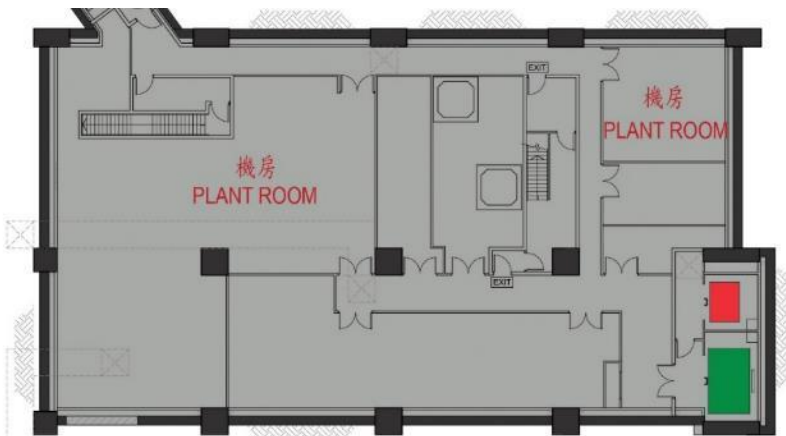
- (a) State Key Laboratory of Agrobiotechnology;
- (b) specialized laboratories for high-precision instruments such as electron microscopes, mass spectrometers, X-ray diffractometers;
- (c) green house for plant biotechnology researches;
- (d) research facilities for animal models of human diseases;
- (e) computational and data center for bioinformatics research; and
- (f) herbarium to provide a platform for supporting research and education in Science, Technology, Engineering and Mathematics (STEM).



Demanding requirement of acoustics, electromagnetic interference, humidity, temperatures, floor loading and floor vibration, etc.



**G/F Plan**



**Basement Plan**

**Legend 圖例**

- RESEARCH LABORATORY 研究用實驗室
- OFFICE 教職員辦公室
- CIRCULATION 通道
- PLANT ROOM 機房
- ACCESSIBLE TOILET 暢通易達洗手間
- ACCESSIBLE LIFT 暢通易達升降機
- PASSENGER LIFT 客用升降機
- SERVICE LIFT 送貨升降機
- VERTICAL GREEN 直綠化垂
- BARRIER FREE ACCESS 無障礙通道

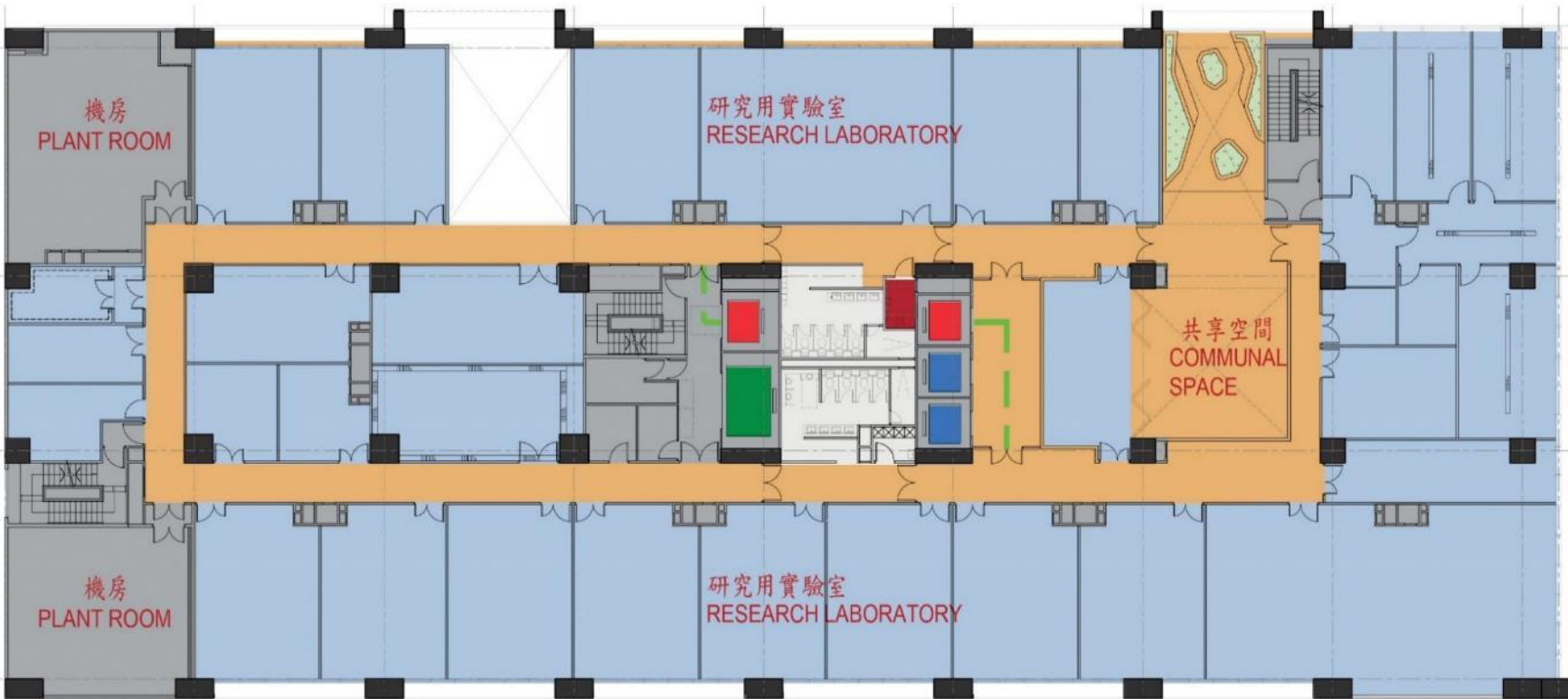




# 1/F Plan

## Legend 圖例

- RESEARCH LABORATORY 研究用實驗室
- OFFICE 教職員辦公室
- CIRCULATION 通道
- PLANT ROOM 機房
- ACCESSIBLE TOILET 暢通易達洗手間
- ACCESSIBLE LIFT 暢通易達升降機
- PASSENGER LIFT 客用升降機
- SERVICE LIFT 送貨升降機
- VERTICAL GREEN 直綠化垂
- BARRIER FREE ACCESS 無障礙通道



### Legend 圖例

- RESEARCH LABORATORY 研究用實驗室
- OFFICE 教職員辦公室
- CIRCULATION 通道
- PLANT ROOM 機房
- ACCESSIBLE TOILET 暢通易達洗手間
- ACCESSIBLE LIFT 暢通易達升降機
- PASSENGER LIFT 客用升降機
- SERVICE LIFT 送貨升降機
- VERTICAL GREEN 直綠化垂
- BARRIER FREE ACCESS 無障礙通道

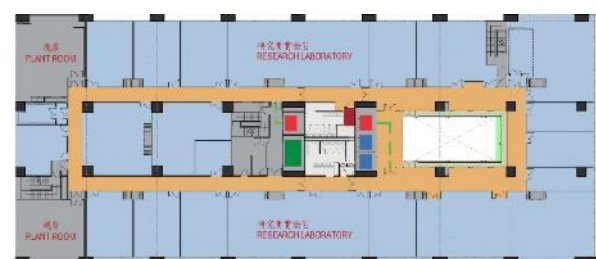
## 3/F Plan



## 2/F Plan



## 4/F Plan



## 5/F to 7/F Plans



## Roof Plan

### Legend 圖例

- RESEARCH LABORATORY 研究用實驗室
- OFFICE 教職員辦公室
- CIRCULATION 通道
- PLANT ROOM 機房
- ACCESSIBLE TOILET 暢通易達洗手間
- ACCESSIBLE LIFT 暢通易達升降機
- PASSENGER LIFT 客用升降機
- SERVICE LIFT 送貨升降機
- VERTICAL GREEN 直線化垂
- BARRIER FREE ACCESS 無障礙通道



# Project Information

	<b>8056EF Centralised General Research Laboratory Complex (Block 2) The Chinese University of Hong Kong</b>
<b>Net Operational Floor Area</b>	Approx. 12 000 m <sup>2</sup>
<b>No. of Storeys</b>	9
<b>Major Users</b>	CUHK Faculty of Science
<b>Facilities</b>	Laboratories Offices Commons and Supporting Facilities
<b>Estimated Cost (in MOD)</b>	\$1 416.18 million
<b>Works Commencement</b>	1Q 2021*
<b>Works Completion</b>	Within 2024*

\*Subject to the funding approval

# Schedule of Accommodation

Facilities	Estimated floor area in net operational floor area (NOFA)
Laboratories	Approx. 10 400 m <sup>2</sup>
Office	Approx. 1 100 m <sup>2</sup>
Common and Supporting Facilities	Approx. 500 m <sup>2</sup>
<b>Total</b>	<b>Approx. 12 000 m<sup>2</sup></b>

# Programme

	Date	Item
2019	Nov	Submission of full set of draft tender document for UGC/ArchSD's vetting
2020	Mar	Tendering for Main Contract
2020	Nov	Consultation of Panel on Education
2020	Dec	Seeking endorsement from PWSC
2021	Jan	Seeking approval from FC
2021	Mar	Commencement of Site Formation and Foundation Works
2022	Mar	Commencement of Superstructure Construction Works
2024	Within 2024	Works Completion

A photograph of a university building with a rainbow in the sky. The building is a large, modern structure with a central entrance and a wide staircase. The sky is blue with scattered white clouds, and a vibrant rainbow arches across it. The foreground shows a paved area with some trees and a few people walking.

**Thank you**