

## **For Information**

### **Legislative Council Panel on Education**

#### **Annual Progress Report on Implementation of the Hostel Development Fund**

### **Purpose**

This paper reports to Members the progress on the implementation of student hostel projects funded under the Hostel Development Fund (HDF) as of June 2021.

### **Background**

2. In July 2018, the Finance Committee (FC) of the Legislative Council (LegCo) approved a one-off grant of \$10,303.7 million for establishing the HDF for six University Grants Committee (UGC)-funded universities with a shortfall in hostel places to expedite the development of student hostels. The six universities are City University of Hong Kong (CityU), Hong Kong Baptist University (HKBU), The Chinese University of Hong Kong (CUHK), The Hong Kong Polytechnic University (PolyU), The Hong Kong University of Science and Technology (HKUST), and The University of Hong Kong (HKU). The HDF covers a total of 15 hostel projects of the universities concerned to provide 13 473 hostel places (see FCR(2018-19)35).

3. With the FC's approval, the UGC Secretariat signed service agreements with the universities concerned and disbursed in full the capital grants allocated to these universities. Annual progress reports on the implementation of the HDF were submitted to the LegCo Panel on Education in 2019 and 2020 (LC Paper No. CB(4)1123/18-19(01) and CB(4)778/19-20(01)) for Members' information.

### **Implementation Progress**

4. The universities concerned are required to submit quarterly progress reports on the hostel projects to the Government until the completion and submission of the Statement of Final Accounts. So far, the universities have commenced construction works of seven of the hostel projects which are scheduled for completion between 2022 and 2026. Details of the projects under construction based on the universities' latest reports are set out in Table 1 of Enclosure 1 for Members' information.

5. As for the remaining eight hostel projects, the universities are gradually proceeding with the preparatory work (see Table 2 of Enclosure 1 for more information). The detailed design of the following three projects has been completed –

- (a) HKU – 938-place Student Residence at High West Site (see Enclosure 2 for further details);
- (b) CUHK – 250-place Student Hostel at United Campus (see Enclosure 3 for further details); and
- (c) CUHK – 300-place Student Hostel at Shaw Campus (see Enclosure 4 for further details).

### **Way Forward**

6. Members are invited to note the latest implementation progress of the HDF. The UGC Secretariat will continue to monitor the progress. Annual progress reports will be submitted to Members.

**Education Bureau**  
**University Grants Committee Secretariat**  
**October 2021**

## Enclosure 1

### Progress of Student Hostel Projects under the HDF (as of June 2021)

**Table 1 - Hostel projects for which construction works have commenced**

University	Hostel Project	Capital Grant Disbursed under HDF (\$ million) (MOD)	Number of Hostel Places to be provided	Commencement of Construction Works	Target Completion Date
HKBU	Hostel Complex at 30 Renfrew Road, Kowloon Tong	1,161.598	1 726	February 2019	October 2023
CUHK	300-place Student Hostel at New Asia Campus	196.425	300	June 2019	June 2022
PolyU	Student Hostel at Ho Man Tin Slope	1,268.405	1 279	October 2020	July 2026
HKUST	Halls 10 – 13 Student Residences (formerly known as “1415-place Student Hostel”)	952.295	1 551 <small>(1 415 places funded by HDF plus 136 additional privately-funded places)</small>	July 2020	June 2023 <sup>#</sup>
HKU	Student Residence at Wong Chuk Hang Site	817.552	1 224	August 2019	May 2023
	Student Residence at Mui Fong Street	164.580	250	May 2019	April 2022
	Student Residence at High West Site (see <u>Enclosure 2</u> )	631.274	938	November 2020	May 2024

<sup>#</sup> HKUST is conducting an assessment in respect of an underpass within the site area which was uncovered during the site formation and foundation works of the project.

**Table 2 - Hostel projects for which construction works have yet to commence**

University	Hostel Project	Capital Grant Disbursed under HDF (\$ million) (MOD)	Number of Hostel Places to be provided	Target Works Commencement Date	Target Completion Date
CityU	Student Hostel at Whitehead, Ma On Shan	1,445.828	2 168	Early 2022 (tentative)*	Early 2026 (to be reviewed)*
	Student Hostel at Tat Hong Avenue, Kowloon Tong	992.007	999	October 2023	October 2027
CUHK	250-place Student Hostel at United Campus (see <u>Enclosure 3</u> )	168.250	250	Early 2022	December 2024
	300-place Student Hostel at Shaw Campus (see <u>Enclosure 4</u> )	201.900	300	Early 2022	December 2024
	300-place Student Hostel at Chung Chi Campus	201.900	300	July 2023	December 2026
	250-place Student Hostel at Wu Yee Sun Campus	168.250	250	July 2023	June 2027
	394-place Student Hostel in Area 39	265.162	394	July 2023	June 2027
PolyU	Student Hostel at Tat Hong Avenue, Kowloon Tong	1,668.240	1 680	April 2023	October 2027

\* The target completion date will be reviewed and revised as necessary upon site possession by CityU and commencement of the construction works.

## Enclosure 2

### The University of Hong Kong Student Residence at High West Site

The project site is located at 142 Pok Fu Lam Road, Hong Kong. The proposed scope of works includes the construction of two 19-storey hostel blocks on a single-storey podium with a net operational floor area (NOFA)<sup>1</sup> of around 10 382 square metres (m<sup>2</sup>), comprising –

- (a) a total of **938 student hostel places** with a NOFA of around 9 180 m<sup>2</sup>, including accommodation for wardens, tutors, managers and staff;
- (b) **common facilities** with a NOFA of around 950 m<sup>2</sup>, including a multi-purpose hall with recreational space and kitchen, common room, study room, student Co-op, activity lecture room, meeting rooms, student association rooms, pantries and entrance lobby on G/F; and
- (c) **supporting facilities** with a NOFA of some 252 m<sup>2</sup>, including management office, warden office, laundries, store rooms, mail rooms and counters for attendant.

2. The construction works commenced in November 2020 and will be completed by May 2024.

3. The site plan, sectional plan and artist's impression of the project are at Annexes A, B and C to Enclosure 2 respectively.

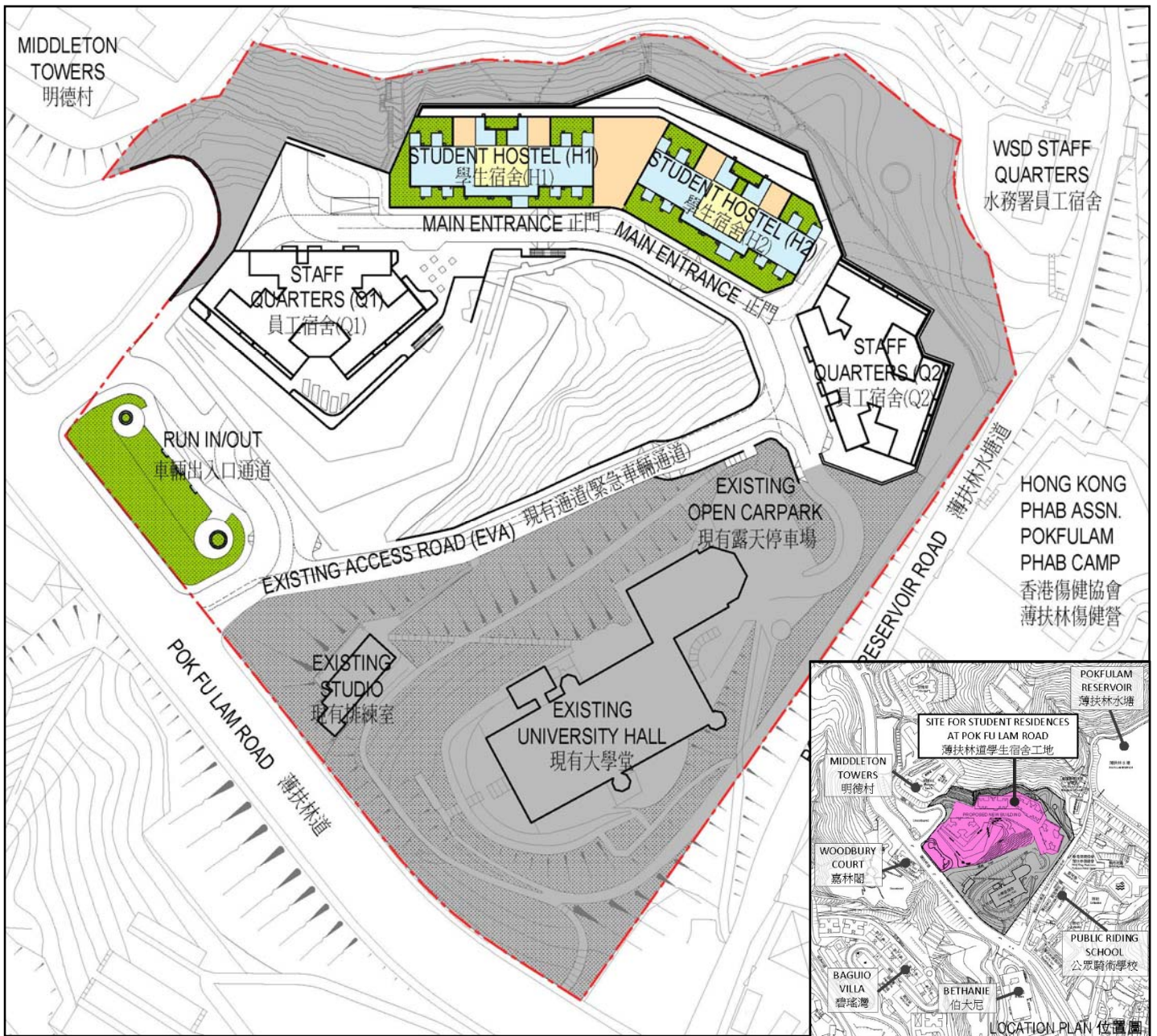
---

<sup>1</sup> NOFA is the floor area actually allocated to the users of a building for carrying out the intended activities. Unlike the construction floor area which takes into account all areas within the building structure envelop, NOFA does not include areas for such facilities (if any) as toilets, bathrooms and shower rooms, lift lobbies, stair halls, public or shared corridors, stairwells, escalators and lift shafts, pipe or services ducts, barriers-free access facilities, gender mainstreaming facilities, refuse chutes and refuse rooms, balconies, verandas, open decks and flat roofs, parking spaces, loading and unloading areas and mechanical plant rooms, etc.

The University of Hong Kong  
Student Residence at High West Site

香港大學 西苑學生宿舍

Site plan 工地平面圖

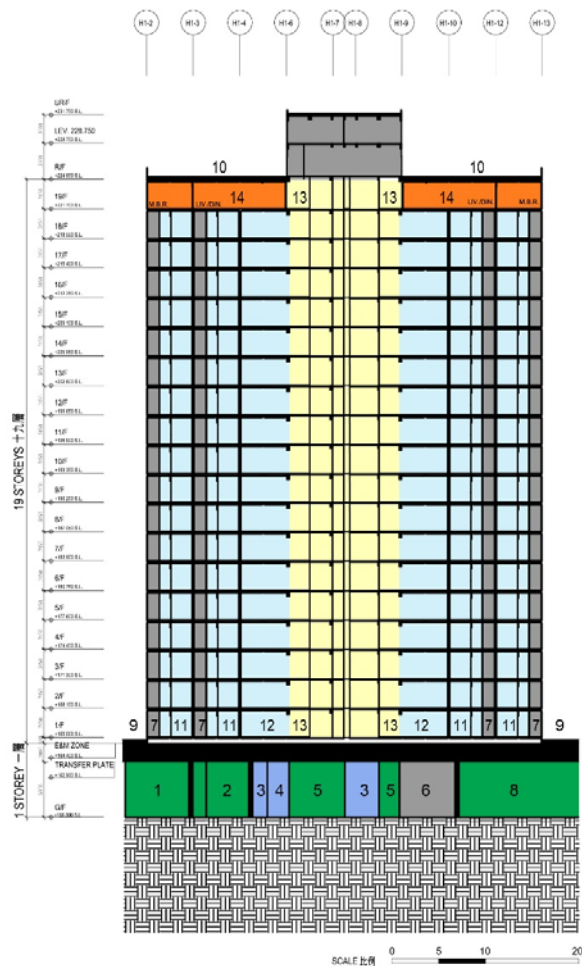


SCALE 比例 0 10 25 50 100m

The University of Hong Kong  
Student Residence at High West Site

香港大學 西苑學生宿舍

Sectional Plan 截面圖



LEGEND 圖例-

- 1. STUDY ROOM 自修室
- 2. MEETING ROOM 會議室
- 3. STORE ROOM 儲物室
- 4. WARDEN OFFICE 舍監辦公室
- 5. ENTRANCE LOBBY 入口大堂
- 6. LAVATORY 洗手間
- 7. BATHROOM 浴室
- 8. MULTI-PURPOSE HALL 多功能廳
- 9. GREEN ROOF 綠化平台
- 10. ROOF 天台
- 11. SINGLE ROOM 單人房
- 12. PANTRY 茶水間
- 13. LIFT LOBBY 升降機大堂
- 14. WARDEN ACCOMODATION 舍監住宿



**The University of Hong Kong  
Student Residence at High West Site**

香港大學 西苑學生宿舍

**View of the buildings from the southwest (artist's impression)**  
從西南面望向建築物外觀構思圖





## Enclosure 3

### **The Chinese University of Hong Kong (CUHK) 250-place Student Hostel at United Campus**

The project site is located at United College of the CUHK's campus. The scope of works includes the construction of a multi-storey hostel block with a net NOFA of around 2 805 m<sup>2</sup>, comprising –

- (a) a total of **250 student hostel places** with a NOFA of around 2 105 m<sup>2</sup>, including accommodation for wardens and tutors;
- (b) **common facilities** with a NOFA of around 630 m<sup>2</sup>, including multi-function hall, pantries, fitness room, game room, reading room, common rooms; and
- (c) **supporting facilities** with a NOFA of around 70 m<sup>2</sup>, including attendance's room, warden office, laundry, reception, network distribution equipment room and store rooms.

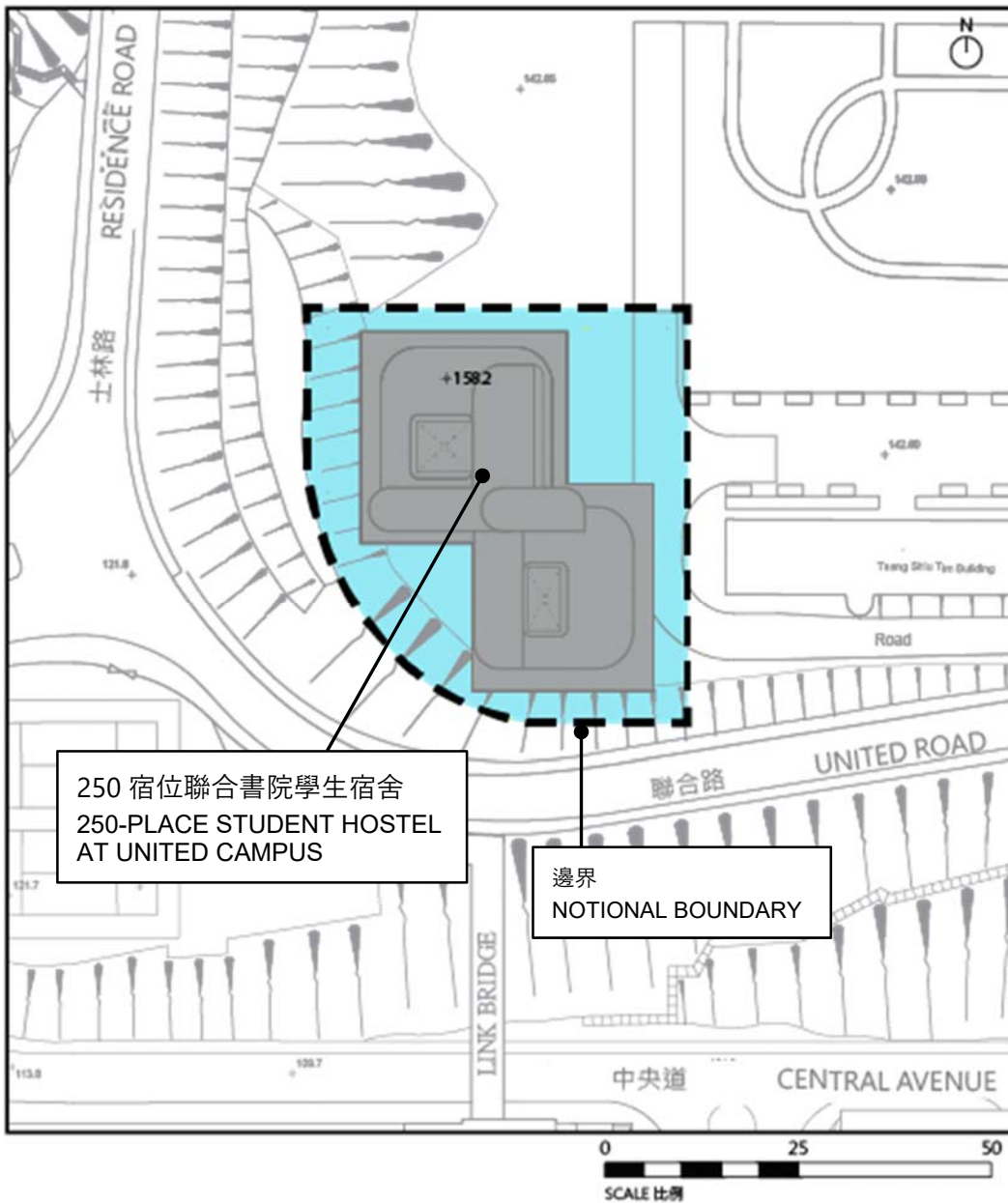
2. Taking into account the programme in June 2021, CUHK plans to commence construction works in early 2022 for completion by December 2024.

3. The site plan, sectional plan and artist's impression of the project are at Annexes A, B and C to Enclosure 3 respectively.

The Chinese University of Hong Kong  
250-place Student Hostel at United Campus

香港中文大學-250 宿位聯合書院學生宿舍

Site Plan 工地平面圖



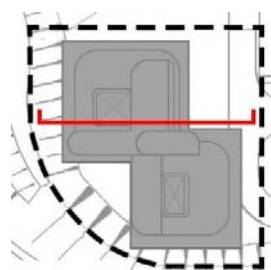
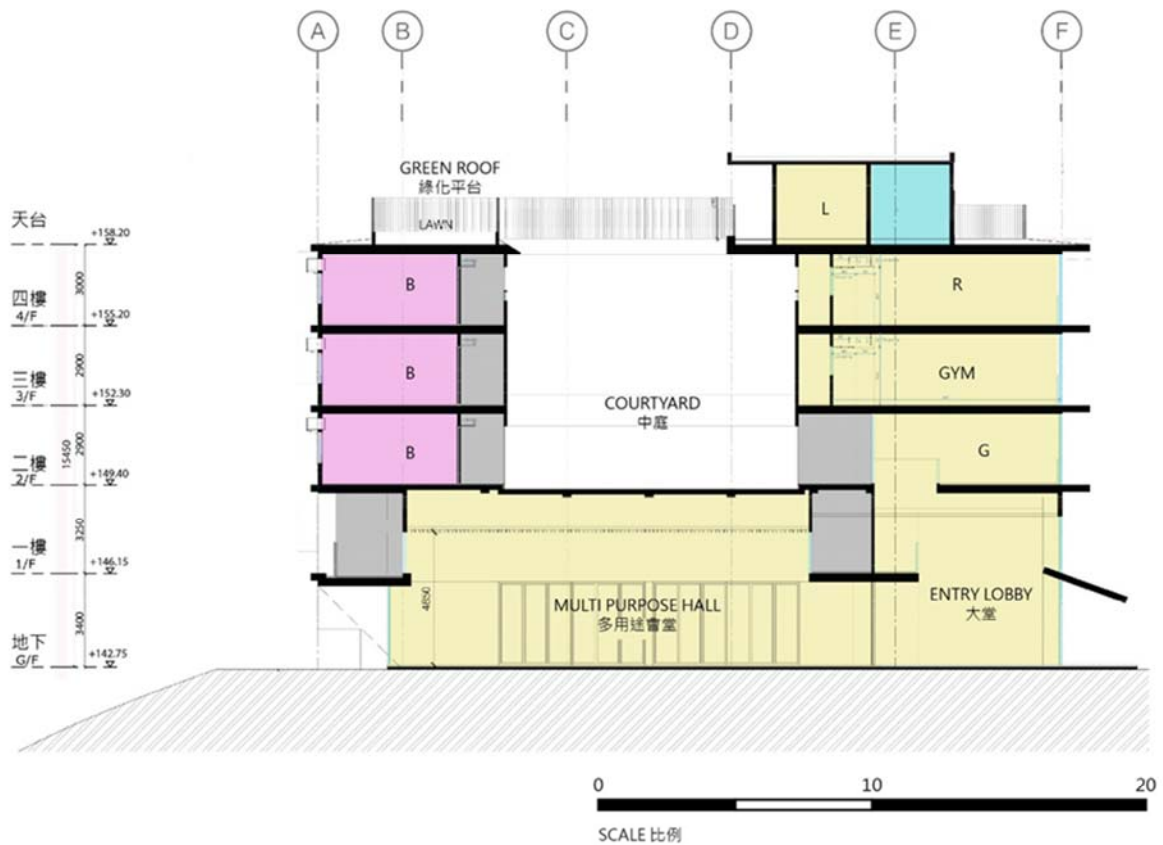
Location Plan 位置圖

250 宿位聯合書院學生宿舍  
250-PLACE STUDENT HOSTEL  
AT UNITED CAMPUS

The Chinese University of Hong Kong  
250-place Student Hostel at United Campus

香港中文大學-250 宿位聯合書院學生宿舍

Sectional Plan 截面圖



LEGEND 圖例

B	STUDENT BEDROOM	學生房間
G	GAME AREA	遊戲室
GYM	GYMNASIUM AREA	健身房
L	LAUNDRY	洗衣房
H	MULTIPURPOSE HALL	多用途會堂
R	READING ROOM	閱讀及溫習室
	PLANT ROOM/PUMP ROOM	機房/泵房
	CIRCULATION/CORRIDOR	通道/走廊

**The Chinese University of Hong Kong  
250-place Student Hostel at United Campus**

香港中文大學-250 宿位聯合書院學生宿舍

**View of the buildings from the southwest (artist's impression)  
從西南面望向建築物外觀構思圖**

擬建學生宿舍  
Proposed Student Hostel



**The Chinese University of Hong Kong (CUHK)  
300-place Student Hostel at Shaw Campus**

The project site is located at Shaw College of the CUHK's campus. The scope of works includes the construction of a multi-storey hostel block with a NOFA of around 3 414 m<sup>2</sup>, comprising –

- (a) a total of **300 student hostel places** with a NOFA of around 2 480 m<sup>2</sup>, including accommodation for wardens and tutors;
- (b) **common facilities** with a NOFA of around 850 m<sup>2</sup>, including canteen, pantries, fitness room, computer room, reading room, common rooms; and
- (c) **supporting facilities** with a NOFA of some 84 m<sup>2</sup>, including attendant's room, warden office, laundry, reception, network distribution equipment room and store rooms.

2. Taking into account the programme in June 2021, CUHK plans to commence construction works in early 2022 for completion by December 2024.

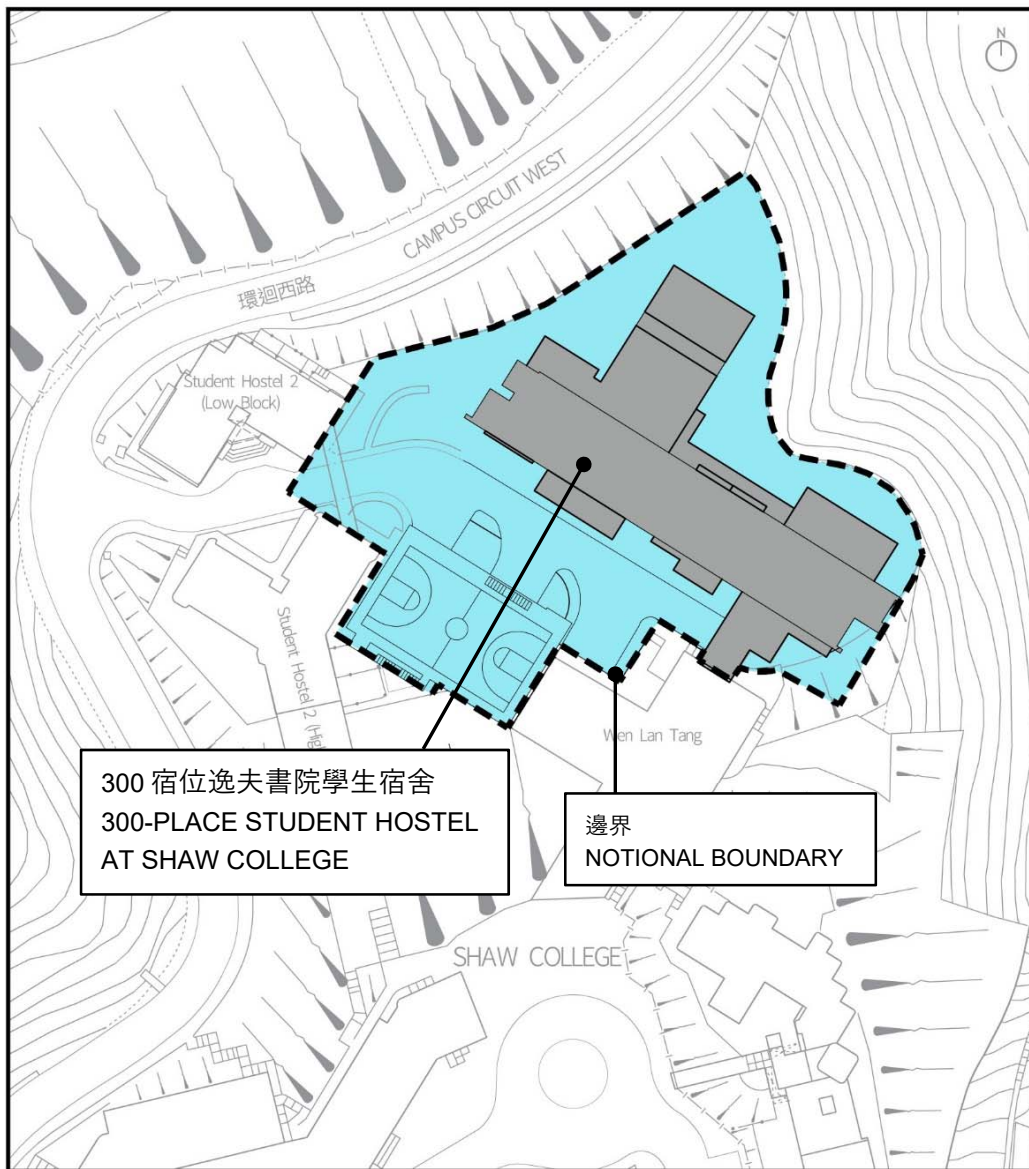
3. The site plan, sectional plan and artist's impression of the project are at Annexes A, B and C to Enclosure 4 respectively.



The Chinese University of Hong Kong  
300-place Student Hostel at Shaw Campus

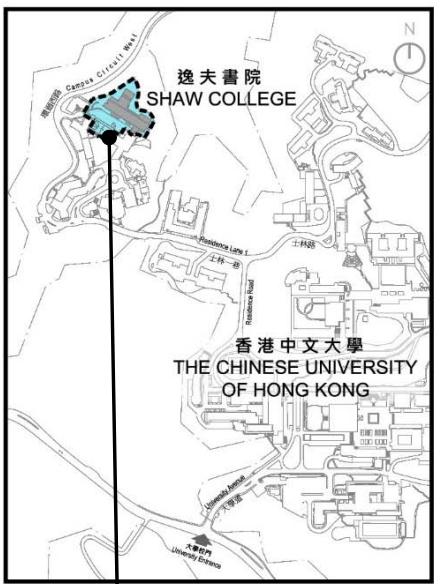
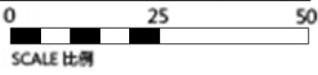
香港中文大學 – 300 宿位逸夫書院學生宿舍

Site Plan 工地平面圖



300 宿位逸夫書院學生宿舍  
300-PLACE STUDENT HOSTEL  
AT SHAW COLLEGE

邊界  
NOTIONAL BOUNDARY



Location Plan 位置圖

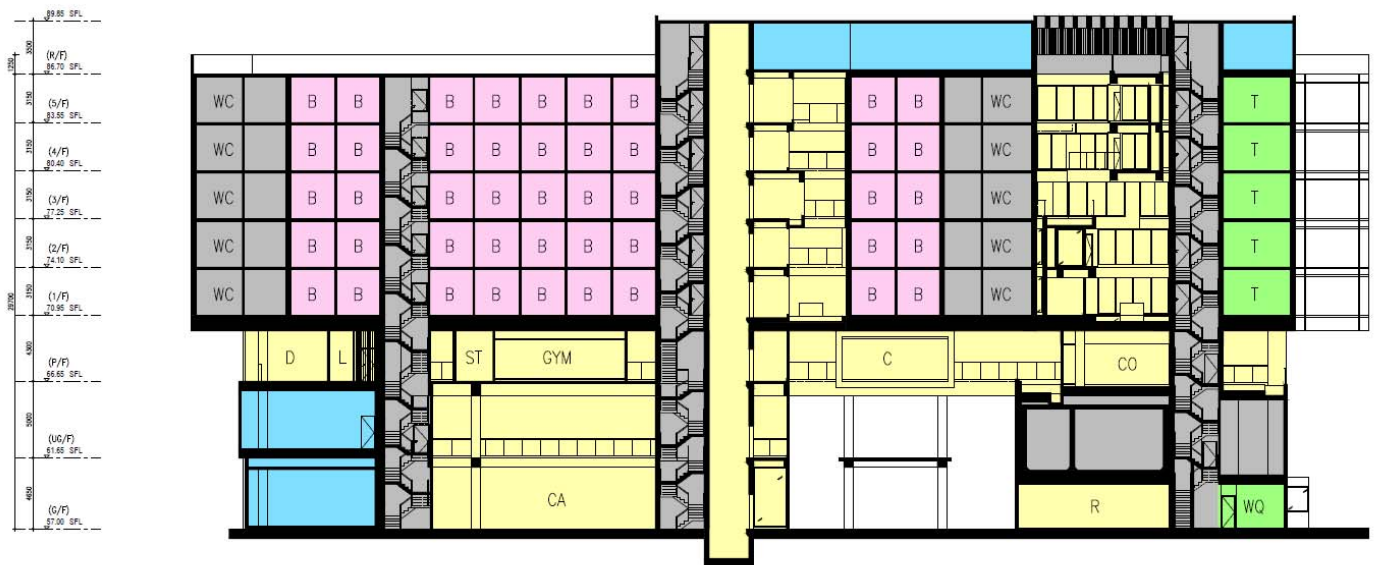
300 宿位逸夫書院學生宿舍  
300-PLACE STUDENT HOSTEL  
AT SHAW COLLEGE



The Chinese University of Hong Kong  
300-place Student Hostel at Shaw Campus

香港中文大學 – 300 宿位逸夫書院學生宿舍

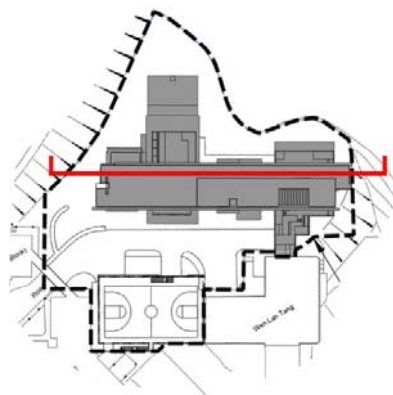
Sectional Plan 截面圖



SCALE 比例 0m 20m 40m

LEGEND 圖例

B	STUDENT BEDROOM	學生房間
T	TUTOR'S BEDROOM	導師房間
WQ	WARDEN'S QUARTER	舍監宿舍
C	COMMON SPACE	公共空間
CA	CANTEEN	飯堂
CO	COMPUTER ROOM	電腦房
D	DRYING ROOM	乾衣房
L	LAUNDRY ROOM	洗衣房
GYM	GYMNASIUM AREA	健身房
R	READING ROOM	閱讀室及溫習室
ST	STORE ROOM	儲物房
	PLANT ROOM/PUMP ROOM	機房/泵房
WC	BATHROOM/TOILET	洗手間及浴室
	CIRCULATION/CORRIDOR	通道/走廊



**The Chinese University of Hong Kong  
300-place Student Hostel at Shaw Campus**

香港中文大學 – 300 宿位逸夫書院學生宿舍

**View of the buildings from the north (artist's impression)**  
從北面望向建築物外觀構思圖

