

Hong Kong-Singapore Air Travel Bubble



Implementation Details



Objectives

- Gradually resume cross-border travel with places where the epidemic is under control while at the same time protecting public health
- Provided that the travellers observe a set of disease prevention measures, they can travel conveniently -
 - ✓ Exempted from compulsory quarantine or Stay-Home Notice
 - ✓ No restriction on the purpose of travel
 - ✓ No restriction on the itinerary



Eligibility



Health protection



Designated flights



Scalability



Other requirements





Who is eligible?



Anyone in Hong Kong and Singapore*, irrespective of nationality



No travel history to any country or region other than Hong Kong or Singapore on the day of departure and during the prior **14 days**



72 hours

Tested negative for COVID-19 in accordance with the requirements of the government of Hong Kong or Singapore



Arrive at Hong Kong or Singapore by a designated flight

*Except dormitory residents in Singapore (i.e. holders of Work Permits or S Passes issued by the Singapore Ministry of Manpower working in the construction, marine shipyard, or process sectors)



Eligibility



Health protection



Designated flights



Scalability



Other requirements



Health protection measures

■ Testing arrangements

- ✓ Take a PCR nucleic acid test that is mutually-recognised by Hong Kong and Singapore (with specimen collected within 72 hours before departure)
- ✓ Travellers to Hong Kong are required to take another test upon arrival. They are not allowed to leave the airport before obtaining a negative test result

■ Designated flights

- ✓ No transit passengers or non-bubble travellers
- ✓ Hong Kong-bound flights served by tested air crew



Eligibility



Health protection



Designated flights



Scalability



Other requirements



Health protection measures

■ Designated lane upon arrival in Hong Kong

- ✓ Hong Kong International Airport will implement measures to segregate travellers arriving at Hong Kong by designated flights from other travellers at the Airport



Eligibility



Health protection



Designated flights



Scalability



Other requirements





Number of designated flights and travellers



22 Nov - 6 Dec

HKG to SIN

1 flight per day
200 pax per flight

SIN to HKG

1 flight per day
200 pax per flight

From 7 Dec onwards

2 flights per day
200 pax per flight

2 flights per day
200 pax per flight



Eligibility



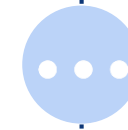
Health protection



Designated flights



Scalability



Other requirements



Suspend, resume, or adjust designated flights

- Adjust according to the latest epidemic situation

Indicator : 7-day moving average of unlinked local cases

Hong Kong/ Singapore **More than 5** / day

Suspension for 2 weeks

Last day of the 2-week suspension
Hong Kong & Singapore

5 or below / day

Resumption

More than 5 / day

Suspension for another 2 weeks



Eligibility



Health protection



Designated flights



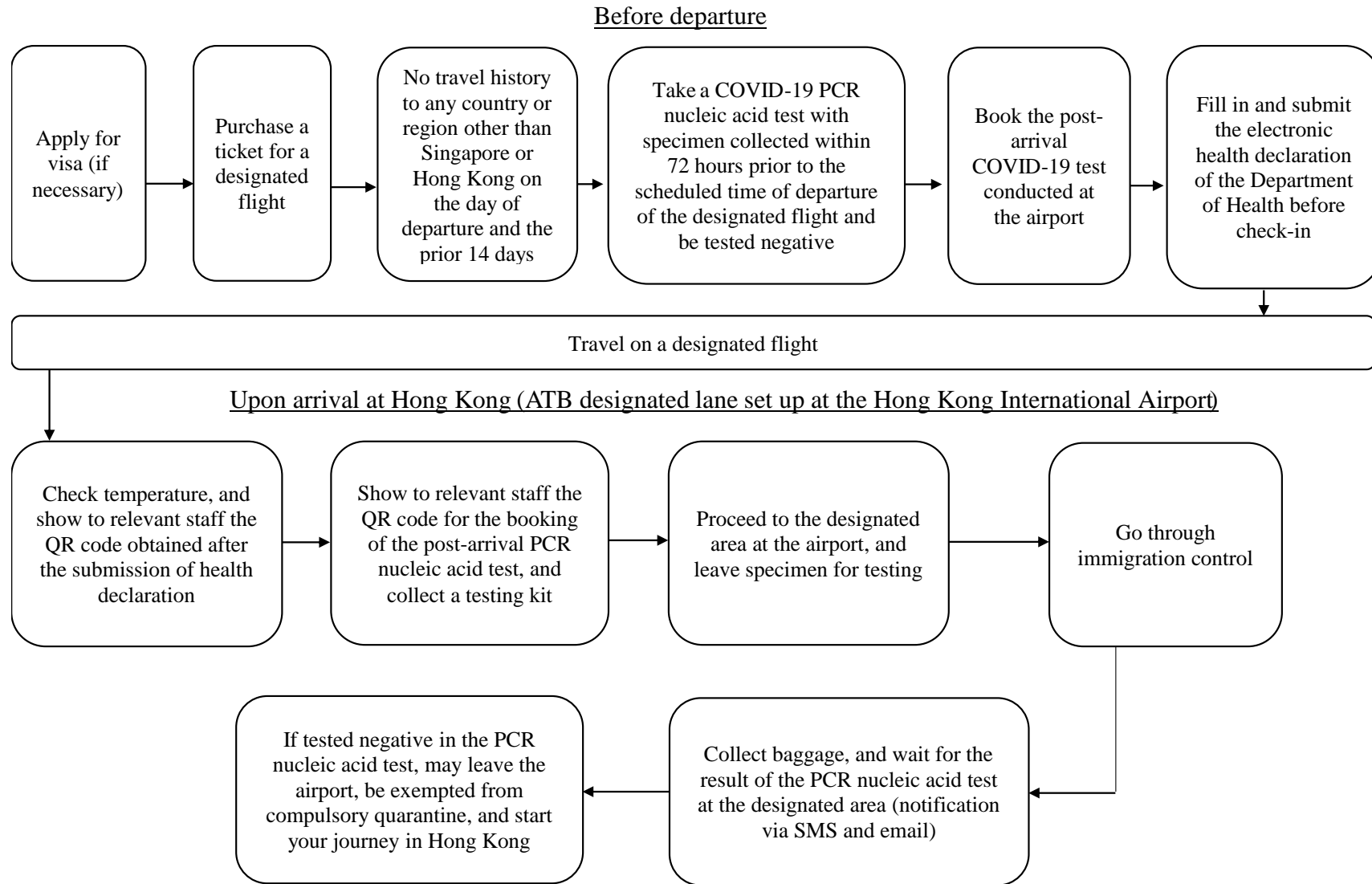
Scalability



Other requirements



Flow chart for travel to Hong Kong



Eligibility



Health protection



Designated flights



Scalability

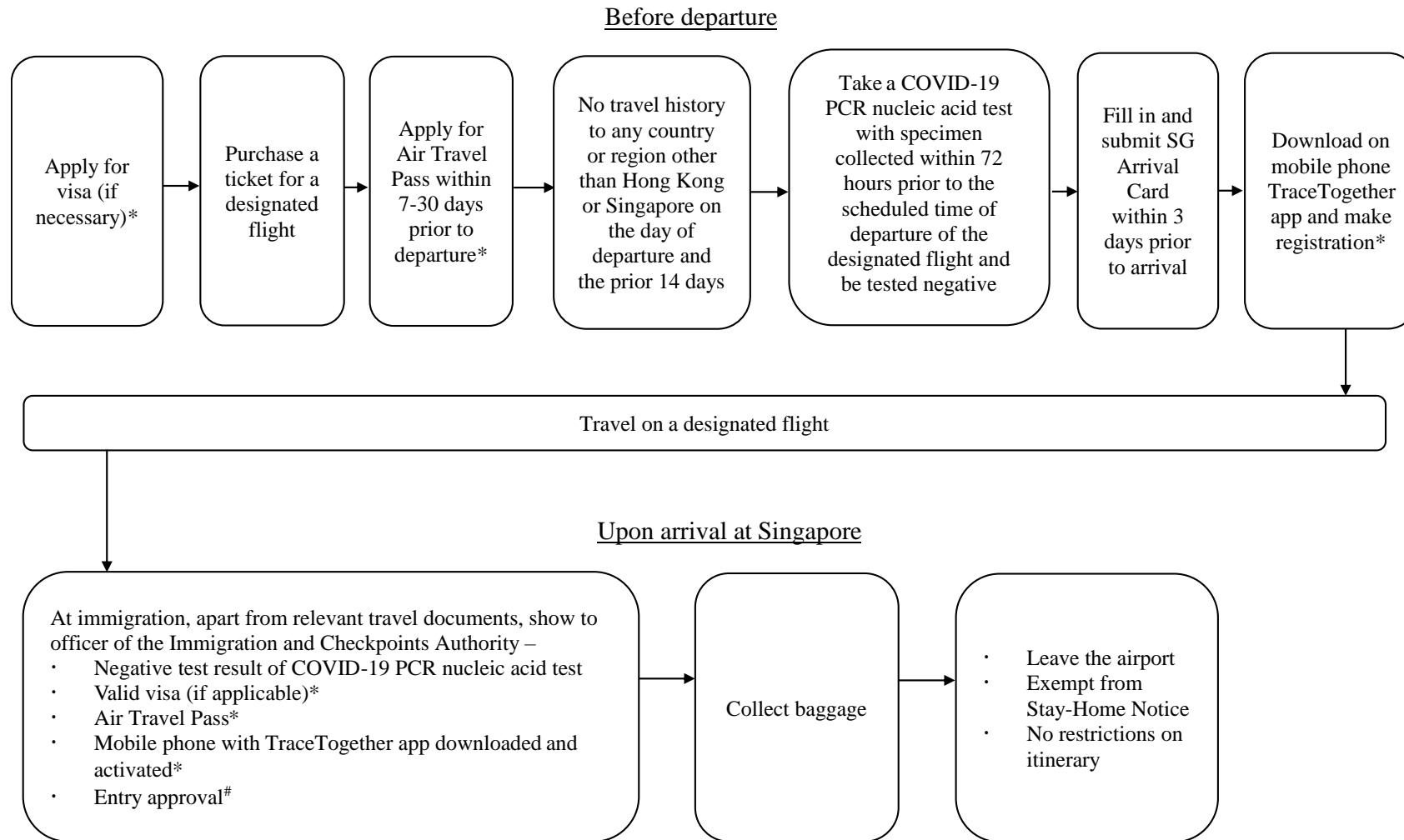







Other requirements



Flow chart for travel to Singapore

*For details, please refer to the [Safe Travel](#) website of the Singapore Government.



-  Eligibility
-  Health protection
-  Designated flights
-  Scalability
-  Other requirements



* Only applicable to travellers who are non-Singapore citizens, and at the same time, non-Permanent Residents or non-Long-Term Pass holders
Only applicable to Singapore Long-Term Pass holders



Air Travel Bubble Website



Commerce and Economic Development Bureau