

For discussion on
15 March 2021

Legislative Council Panel on Home Affairs

Open Space at Hung Hom Waterfront

Purpose

This paper seeks Members' views on and support for the proposal to develop the Open Space at Hung Hom Waterfront.

Project site

2. The project site occupies a total area of about 2.05 hectares and falls within the area zoned "Open Space" on the approved Hung Hom Outline Zoning Plan No. S/K9/26. Straddling across the Kowloon City (KC) District and Yau Tsim Mong (YTM) District, the project includes developing a vacant site at Kin Wan Street into an open space and upgrading the existing Hung Hom Waterfront Promenade.

Project scope

3. The proposed scope of the project comprises –

Development of an Open Space at Kin Wan Street

- (a) a basketball court;
- (b) fitness stations;
- (c) landscaped areas;
- (d) a children's playground with diversified inclusive play equipment suitable for children of all ages;
- (e) seating areas with pavilions and rain shelters;

- (f) ancillary facilities including toilets, a baby care room and a management office etc.; and

Upgrading of the Existing Waterfront Promenade

- (g) addition of design features, park facilities, fitness stations and footpaths linking adjacent sites.

4. A site and location plan as well as an artist's impressions of the project are at **Enclosures 1 and 2** respectively.

Justifications

5. The project aims to provide quality open space for the general public to enjoy the harbour front area, especially the unique and spectacular view of the Victoria Harbour through developing an open space at Kin Wan Street as well as upgrading the existing facilities of the Hung Hom Promenade and the Tsim Sha Tsui Promenade (Extension) with better design and connection with the surrounding developments in Hung Hom and Tsim Sha Tsui harbourfront area.

6. For the 0.8 hectare open space at Kin Wan Street, it will provide both active facilities such as a basketball court, fitness stations, a children's playground and passive facilities such as a viewing deck as well as landscaped and seating areas to meet the needs of the public. The provision of a basketball court can promote sports and help alleviate the shortfall in the district. The fitness stations will provide new equipment suitable for users of all ages. The children's playground will integrate with both the waterfront environment and landscape design and provide inclusive play equipment suitable for children of different ages. The viewing deck design imitates a ship being constructed to resemble the shipbuilding history of the Whampoa Dock. The proposed open space will provide toilets, including universal and accessible toilets, and a baby care room in the ancillary block. These facilities will meet the community needs and benefit the users of the promenade.

7. For the Hung Hom Promenade and the Tsim Sha Tsui Promenade (Extension), design features, fitness stations and footpaths that link up with the neighbourhood will be added to enhance vibrancy and connectivity. Rain shelters, lawn areas, featured seats, lookout and viewing platform will be provided at suitable locations along the

promenade for public to better enjoy the panoramic view of the Victoria Harbour.

8. A holistic approach will be adopted with a view to providing sustainable urban landscape. The overall design will blend in with the waterfront environment. In addition, greeneries will be provided as much as possible. Following the “Right Plant, Right Place” principle, appropriate trees will be planted along the footpaths to create a comfortable environment for users. Heavy standard trees and bushy shrubs of good quality will be provided to give better shading whereas flowering trees, colourful foliage and flowering shrubs will be added as appropriate to enhance the overall design.

Project estimate and timetable

9. The estimated project cost is about \$266.7 million in money-of-the-day prices. Subject to the funding approval by the Finance Committee (FC) within the 2020-21 legislative session, the construction works will take about three years to complete.

Public consultation

10. We consulted the District Facilities Management Committee of the YTM District Council on 7 July 2011 and 1 September 2011 as well as the Leisure and District Facilities Management Committee (LDFMC) of the KC District Council on 28 July 2011 on the scope of this project. On the conceptual design, we consulted the Food, Environmental Hygiene and Public Works Committee of the YTM District Council on 2 June 2016 and the LDFMC of the KC District Council on 30 June 2016. Members supported the project.

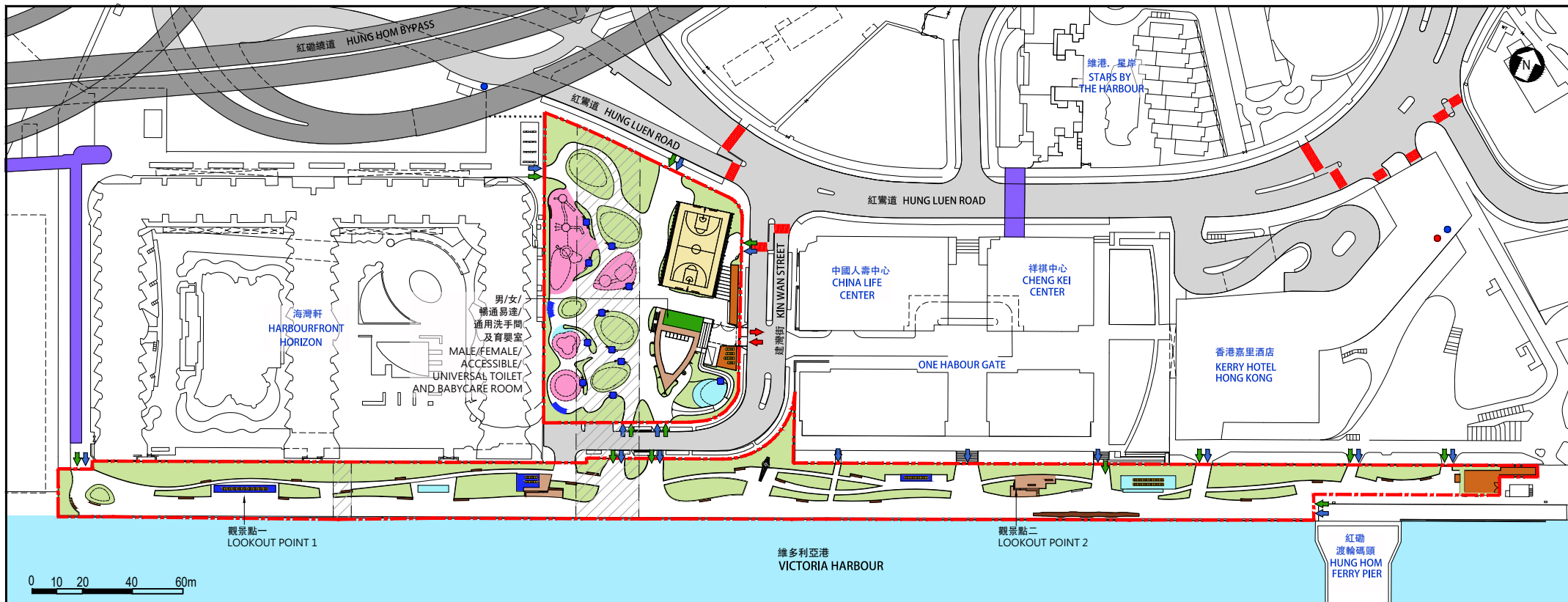
11. We also consulted the Harbourfront Commission’s Task Force on Harbourfront Developments in Kowloon, Tsuen Wan and Kwai Tsing on 22 September 2016. The Task Force had no objection to the project and offered their comments on the detailed design, including seating and shading, landscaping etc. afterwards upon further engagement.

Advice sought

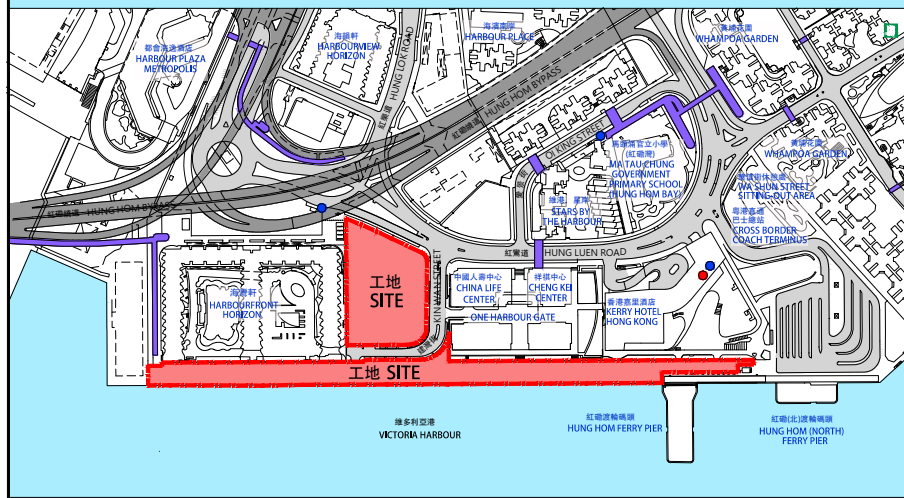
12. Subject to Members’ support to the proposal, we will seek

funding approval from the FC after consulting the Public Works Subcommittee.

Home Affairs Bureau
March 2021



0 10 20 40 60m



位置圖 LOCATION PLAN

0 50 100 200 300m

圖例
LEGEND :

- 工地界線
SITE BOUNDARY
- 現有行人過路處
EXISTING AT-GRADE PEDESTRIAN CROSSING
- 現有行人天橋
EXISTING PEDESTRIAN FOOTBRIDGE
- 行人出入口
PEDESTRIAN ENTRANCE / EXIT
- 車輛出入口
VEHICULAR INGRESS / EGRESS
- 無障礙出入口
BARRIER-FREE ENTRANCE / EXIT
- 排水系統專用範圍
DRAINAGE RESERVE AREA
- 花槽 / 草坪
AT GRADE GREENING
- 天台綠化
LANDSCAPED ROOF
- 健身站
FITNESS STATION
- 兒童遊樂場
CHILDREN'S PLAY AREA
- 觀景台
VIEWING DECK
- 籃球場
BASKETBALL COURT
- 公園辦事處 / 輔助設施
PARK OFFICE / ANCILLARY FACILITY
- 涼亭 / 有蓋座椅
PAVILION / SHELTERED SEATING
- 座椅
SITTING BENCH
- 太陽能光伏板
PHOTOVOLTAIC PANEL
- 公共運輸交匯處
PUBLIC TRANSPORT INTERCHANGE
- 小巴士站
MINI-BUS STOP
- 港鐵站出入口
MTR STATION ENTRANCE / EXIT

工地平面圖
SITE PLAN

449RO
紅磡海濱休憩用地
OPEN SPACE AT HUNG HOM WATERFRONT



ARCHITECTURAL
SERVICES
DEPARTMENT 建築署



從東面望向休憩用地的構思透視圖
PERSPECTIVE VIEW FROM EASTERN DIRECTION (ARTIST'S IMPRESSION)

構思圖一
ARTIST'S IMPRESSION 1

449RO
紅磡海濱休憩用地
OPEN SPACE AT HUNG HOM WATERFRONT



ARCHITECTURAL
SERVICES
DEPARTMENT 建築署



從西面望向擬議觀景台及籃球場的構思透視圖
PERSPECTIVE VIEW OF THE PROPOSED VIEWING DECK AND BASKETBALL COURT VIEWING FROM WEST DIRECTION (ARTIST'S IMPRESSION)



觀景點一的構思透視圖
PERSPECTIVE VIEW OF LOOKOUT POINT 1



觀景點二的構思透視圖
PERSPECTIVE VIEW OF LOOKOUT POINT 2