

# 立法會 *Legislative Council*

LC Paper No. CB(4)1105/20-21(07)

Ref : CB4/PL/HA

## **Panel on Home Affairs**

### **Information note prepared by the Legislative Council Secretariat for the meeting on 18 June 2021**

#### **Development of water sports complex at rehabilitated Shek O Quarry site**

The Panel on Home Affairs ("the Panel") has not discussed the subject of development of a water sports complex at the rehabilitated Shek O Quarry site before. It is noted that this development proposal was announced in the 2020 Policy Address where the Government proposed to implement the Invigorating Island South initiative to develop the Southern District into a place full of vibrancy, vigour and velocity for people to work, live, explore new ideas and have fun. One of the key projects under the Invigorating Island South initiative is to explore the development of a water sports centre at the rehabilitated Shek O Quarry site under public-private partnership to provide advanced training facilities for athletes and water sports enthusiasts.<sup>1</sup>

2. Besides, a written question was raised by Hon Tony TSE on the "Long-term development for sites of the quarries which have ceased or will cease operation shortly" at the Council meeting of 16 January 2019, enquiring about, among others, the planned use of the Shek O Quarry site. The question and the Administration's reply are in the **Appendix**.

---

<sup>1</sup> Other key projects under the Invigorating Island South initiative include:

- (a) formulating a proposal for the rebirth of Ocean Park;
- (b) revitalizing the Jumbo Floating Restaurant;
- (c) enhancing the cultural and leisure facilities in the vicinity of Aberdeen and Wong Chuk Hang;
- (d) exploring new marine tourism routes;
- (e) expediting the redevelopment or conversion of old industrial buildings in Wong Chuk Hang;
- (f) exploring room for redevelopment or consolidation of the existing "Government, Institution or Community" sites or facilities in the district so as to promote "single site, multiple use"; and
- (g) taking the opportunities brought by the large-scale topside development project at the Wong Chuk Hang Station to beautify public space and cityscape through "place making"; as well as enhancing pedestrian connectivity of the Wong Chuk Hang Business Area and the waterfront area nearby while improving the pedestrian environment along Shum Wan Road and Po Chong Wan through minor works.

3. The Administration will consult the Panel on the proposed development of a water sports complex at the rehabilitated Shek O Quarry site at the next meeting on 18 June 2021.

Council Business Division 4  
Legislative Council Secretariat  
11 June 2021

## Press Releases

---

LCQ16: Long-term development for sites of the quarries which have ceased or will cease operation shortly

\*\*\*\*\*

Following is a question by the Hon Tony Tse and a written reply by the Secretary for Development, Mr Michael Wong, in the Legislative Council today (January 16):

Question:

The quarries in Shek O and Lam Tei as well as that on Lamma Island have ceased or will cease operation shortly. Regarding the long-term development for the sites of those quarries, will the Government inform this Council:

(1) of the (i) area, (ii) boundary (marked on a map) and (iii) planned use of the Shek O Quarry site;

(2) given that the Shek O Quarry site is currently used as a casting yard for immersed tube tunnel units for the Shatin to Central Link railway project and the Route 6 – Trunk Road T2 works project, of the expected time when the Government can resume the site for long-term development;

(3) of the (i) area, (ii) boundary (marked on a map) and (iii) planned use of the Lam Tei Quarry site, and (iv) the expected time when the Government can resume the site for long-term development; given the proximity of the site to Tuen Mun town, whether the Government will consider using the site for housing development; and

(4) of the (i) area, (ii) boundary (marked on a map), (iii) planned use and (iv) existing use (if any) of the Lamma Quarry site, and (v) the expected time when the Government can resume the site for long-term development; as the Government has commenced a study on the future development of the site, and conducted a two-stage public consultation on this between 2012 and 2014, of the outcome of the consultation and the study?

Reply:

President:

The Government has been adopting the multi-pronged land supply strategy, including the use of the ex-quarry sites for short term or long term use. In view of its close proximity to the urban core and accessible location, the ex-Anderson Road Quarry site has been rezoned for residential development. As for the way forward of other quarry sites, the Government will, taking into account factors including viable land uses, technical feasibility, site implementation mechanism and cost effectiveness etc, formulate the implementation priority and take forward the relevant planning and follow-up works.

My reply to various parts of the question is as follows:

(1) and (2) The area of the ex-Shek O Quarry site is about 34.5 hectares (ha), including 22 ha of land (mostly man-made slopes) and 12.5 ha of man-made lake (site boundary at Plan 1 in Annex). The Quarry operation ceased in 2011 and the site has been used as a casting basin of immersed tube tunnel units for the Shatin to Central Link railway project since end-2014. The relevant immersed tube project has been completed. Upon the demolition, removal and reinstatement of the site, the relevant land is expected to be handed over to the Lands Department by end-2019. The site is zoned "Undetermined" on the approved Tai Tam and Shek O Outline Zoning Plan, and the Government will review the long-term use of the site in due course. Pending the formulation of the long-term use, the Government has earlier received a short-term tenancy application for the use of the ex-Shek O Quarry site for water sports purposes. The Lands Department is processing the application in accordance with the established mechanism.

(3) Lam Tei Quarry, with an area of about 30 ha, is still in operation with its operating contract to be expired in 2022/23 (site boundary at Plan 2 in Annex). In June 2016, the Planning Department (PlanD) and the Civil Engineering and Development Department (CEDD) commissioned the Preliminary Land Use Study for Lam Tei Quarry and the Adjoining Areas, with an objective to carry out

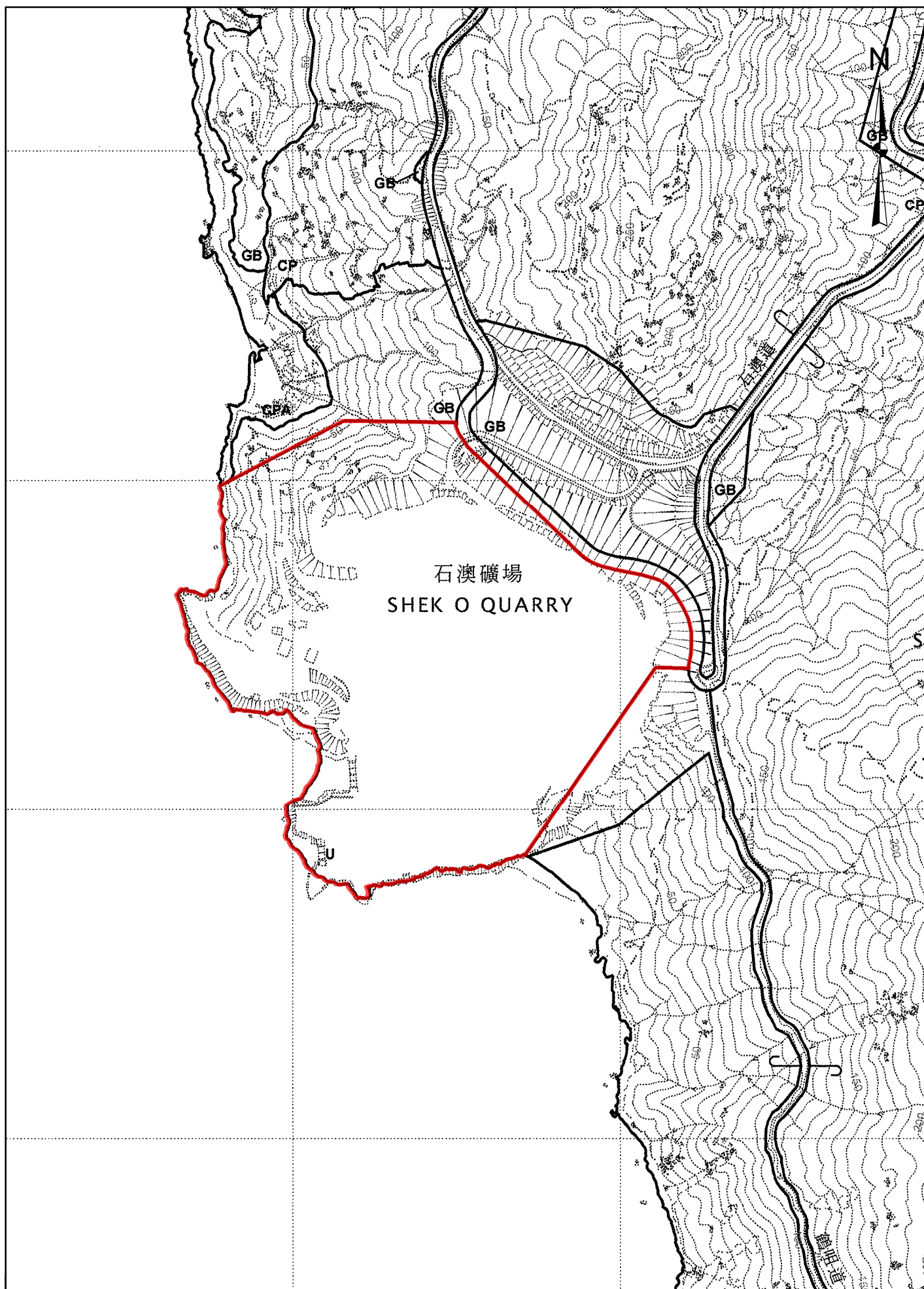
preliminary planning study and technical assessment for the future land uses of the quarry and its adjoining areas, as well as recommend follow-up studies for the next stage. The preliminary study is targeted for completion within 2019.

(4) The area of the ex-Lamma Quarry site is about 34 ha, including a 20-ha platform and a 5-ha man-made lake (site boundary at Plan 3 in Annex). The site is zoned "Undetermined" on the approved Lamma Island Outline Zoning Plan.

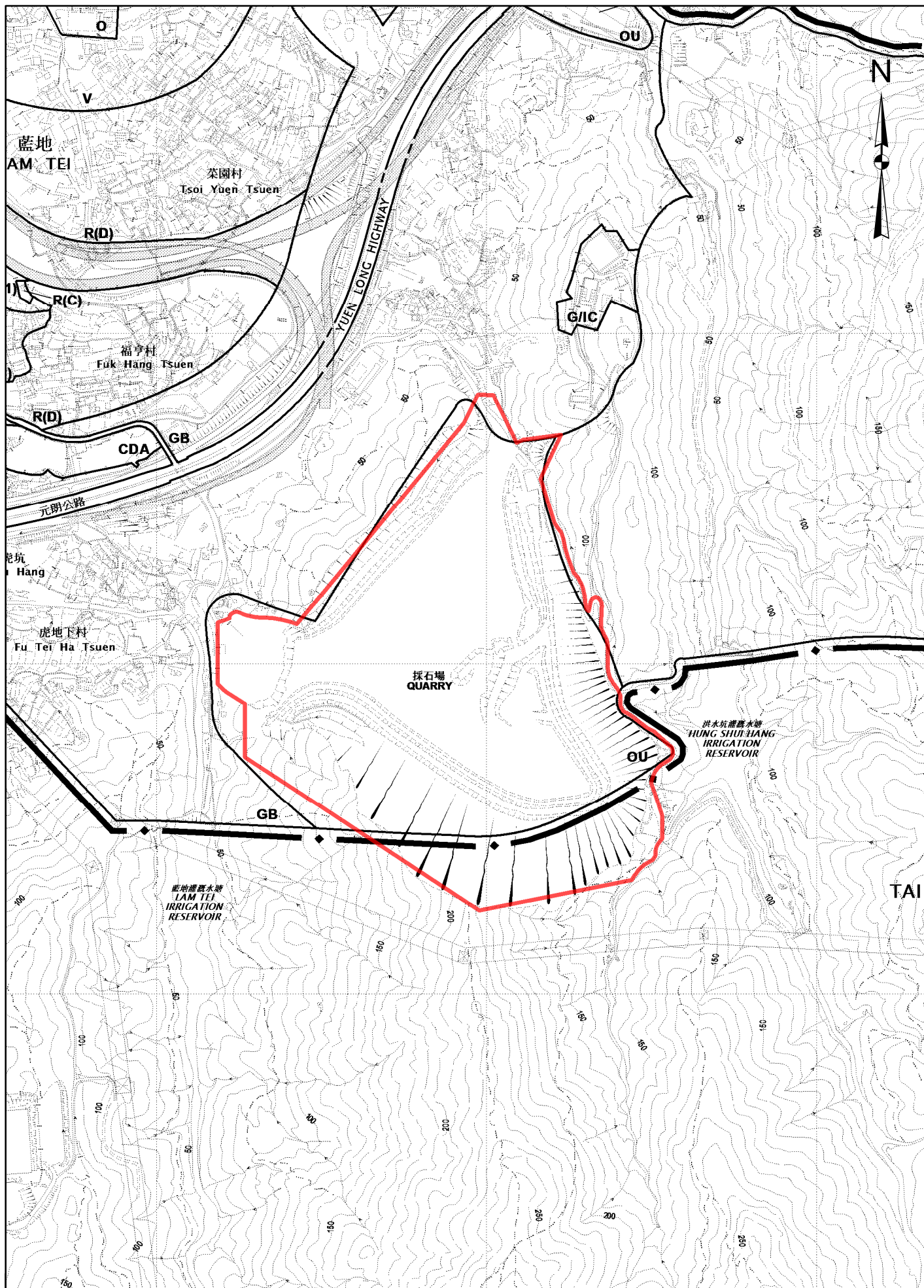
In 2012, PlanD and CEDD commissioned the planning and engineering study on the ex-Lamma Quarry, having prepared the Recommended Outline Development Plan and formulated the land use plan based on a theme of tourism and housing. The reports and information digests of the two stages of Community Engagement have been uploaded to the study website for public viewing. To gauge the market sentiment of developing the site and to explore the feasibility of implementing the development plan, the market sounding out exercise was conducted earlier. Taking into account the findings of the exercise and views collected in the previous Community Engagement, the Government is comprehensively considering the land use planning, implementation arrangement of infrastructure and the site, as well as cost-effectiveness of the development, so as to formulate the way forward of the ex-Lamma Quarry development and the associated follow-up actions. To optimise the use of the site, pending the long term development, the ex-Lamma Quarry site has been leased to a non-Government organisation under a Short Term Tenancy for non-profit making environmental education and wildlife learning centre and associated facilities since 2011.

Ends/Wednesday, January 16, 2019  
Issued at HKT 15:00

NNNN

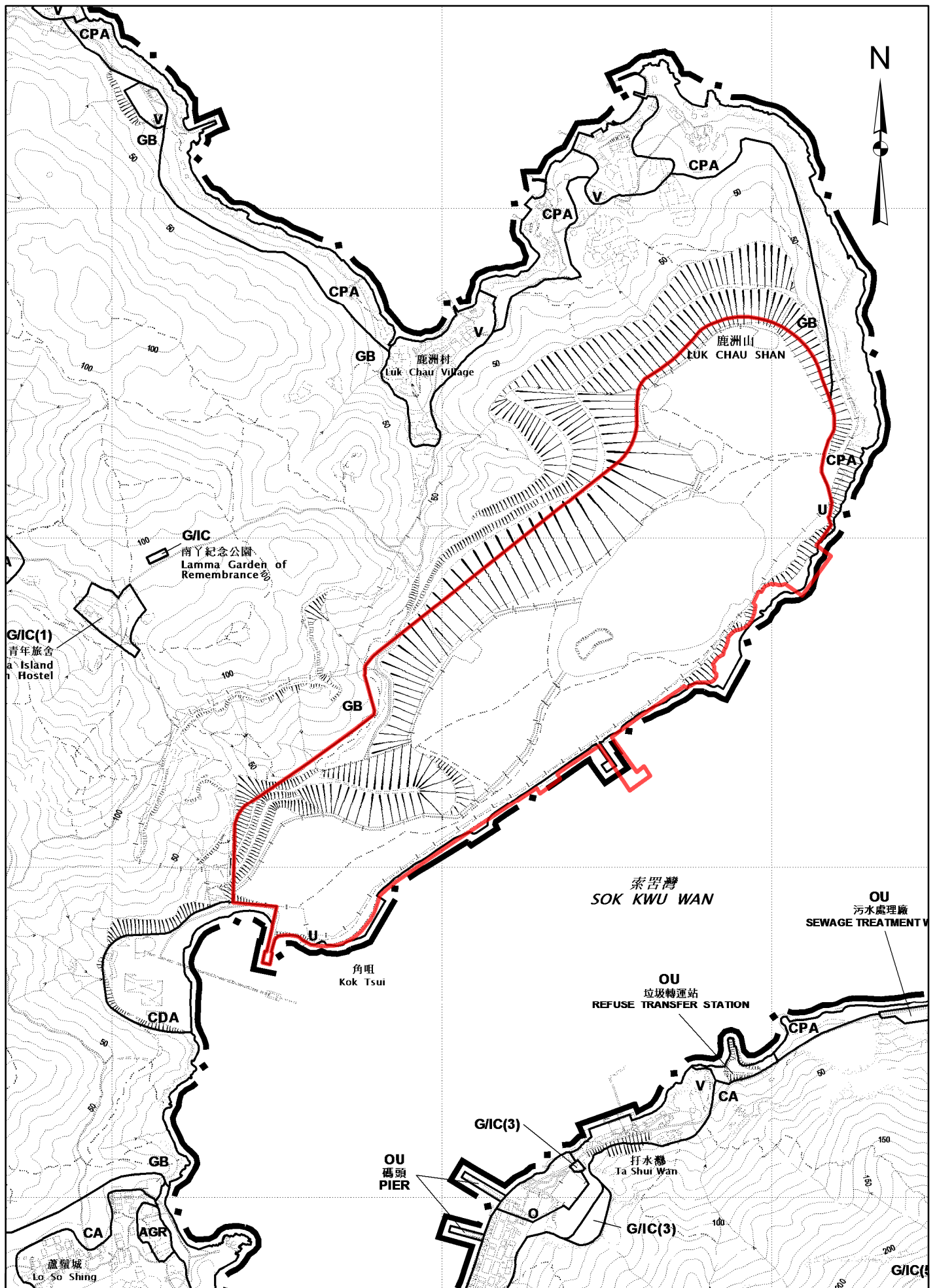


前石澳礦場  
Ex- Shek O Quarry



藍地石礦場  
Lam Tei Quarry





前南丫石礦場  
Ex- Lamma Quarry