

**For discussion on
5 March 2021**

**Legislative Council Panel on Health Services and
Panel on Education**

**Enhancement of Healthcare Teaching Facilities of University
Grants Committee-funded Universities**

PURPOSE

This paper briefs Members on the latest progress of enhancing the teaching facilities of The Chinese University of Hong Kong (CUHK), The Hong Kong Polytechnic University (PolyU) and the University of Hong Kong (HKU) to enable them to cope with the increase in the number of healthcare related first-year-first-degree places (FYFD) since the 2019/20 academic year.

JUSTIFICATIONS

2. Starting from the 2019/20 academic year, the Government has further increased the number of healthcare-related University Grants Committee (UGC)-funded FYFD intake places per academic year by over 150 from about 1 780 to about 1 930 (including 60 medical, 60 nursing and some 30 dental and allied health places) to prepare for the foreseeable tight manpower situation of the healthcare profession. The preexisting insufficiency in the academic space of the relevant faculties/departments of CUHK, PolyU and HKU has been further deepened.

3. To enable the UGC-funded universities which offer relevant training programmes to upgrade and increase their healthcare-relevant teaching facilities with a view to coping with the additional UGC-funded healthcare training places as specified by the Government since the 2019/20 academic year, the Government has earmarked about \$20 billion for short, medium and long-term works projects in relation to the abovementioned purpose.

4. In the 2018-19 and 2019-20 legislative sessions, a total of around \$1.9 billion was approved by the Finance Committee (FC) of the Legislative Council (LegCo) or under the Capital Works Reserve Fund (CWRP) to fund the short and medium term works projects of these universities.

PROPOSALS

5. The latest package and progress of works projects under CUHK, PolyU and HKU are set out below –

CUHK

- (a) **Renovation of facilities in Choh-Ming Li Basic Medical Sciences Building (BMSB)** – some urgent spatial reorganisation and improvement works for the nursing facilities and teaching laboratories of BMSB are being implemented. We plan to submit the funding proposal for the remaining renovation works in BMSB to the Public Works Subcommittee (PWSC) and FC for approval in the 2020-21 legislative session. The estimated project cost is \$57.2 million.
- (b) **Construction of a teaching-research complex in Tai Po Area 39** – the project is needed to provide CUHK's Faculty of Medicine with additional teaching and research facilities on campus for increasing enrolments of medical and nursing students. The FC approved CUHK's funding proposal for a pre-contract consultancy for the preparation of the design and tender documents in June 2020. Subject to the completion of the pre-contract consultancy, we plan to submit a funding application for the main construction works as soon as possible.
- (c) **Construction of a multi-purpose building for CUHK's Faculty of Medicine and student residence around the Prince of Wales Hospital** – CUHK has proposed to construct a multi-purpose building with teaching facilities, research laboratories, offices and student and staff amenities as well as a new 600-place

ancillary student residence for the medical and nursing students attending clinical placement. CUHK is following up with relevant government departments to take forward the project.

PolyU

- (d) **Renovation of healthcare-related teaching facilities on campus** – some urgent renovation and extension works for healthcare related departments under the Faculty of Health and Social Science are being implemented. We are continuing to take forward the remaining items and will seek the necessary funding from LegCo as soon as possible.
- (e) **Campus expansion at Ho Man Tin Slope** – the project is needed to align with the current and future development of the Department of Rehabilitation Sciences and the School of Optometry of PolyU by providing additional classrooms, lecture theatres, teaching and research laboratories, study space, offices/support and amenities space, as well as public open space. The FC approved PolyU’s funding proposal in June 2020 and the construction works commenced in October 2020.
- (f) **Construction of an integrated teaching building** – PolyU proposes to demolish existing buildings on campus for in-situ redevelopment of new academic spaces including classrooms, teaching and research laboratories, office and other facilities. The pre-construction consultancy study was funded under the CWRP Block Allocations in 2019-20. The procurement for a pre-construction consultancy service study is in progress. Upon the completion of the pre-construction consultancy study, we will submit a funding application for the main construction works.

HKU

- (g) **Enhancement of facilities cum medical campus development** – this item is being implemented by phases. Some urgent renovation works are being implemented. The funding proposal of Phase 1 enhancement, which covers an urgent stop-

gap through the conversion works for additional anatomy dissecting laboratories and storage for cadavers at the Laboratory Block, as well as the enablement of virtual connection by a telepresence solution across different teaching venues at the Sassoon Road medical campus buildings and Queen Mary Hospital, was approved by the FC in June 2020. Phase 2 enhancement involves remodelling of existing space at William M. W. Mong Block of the Faculty of Medicine Building and implementation of technology-enabled measures. We will take forward this phase and seek funding from LegCo as soon as possible.

- (h) **Construction of additional academic building and ancillary facilities for Faculty of Medicine of the HKU** – the project will be developed in two phases. For Phase 1, HKU plans to redevelop a catering facility and the Madam S.H. Ho Residence for Medical Students for medical students, both at No. 6 Sassoon Road, into two new blocks of a Clinical Training Amenities Centre (“CTAC”). The consultancy study was funded under the CWRP Block Allocations in 2020-21. Upon the completion of the consultancy study, we will submit a funding application for the main construction of the CTAC.

For Phase 2, HKU proposes to construct a new academic building at the “Green Belt” area located east of No. 3 Sassoon Road (known as “Phase 2”) to accommodate additional teaching and research facilities, laboratories, lecture theatres, offices and ancillary facilities. We plan to submit the funding proposal for conducting the consultancy study to the PWSC and FC for approval in the 2020-21 legislative session. The estimated project cost is \$102.3 million. Similar to the CTAC project, we will submit a funding application for the main construction works after the completion of the consultancy study.

- (i) **Redevelopment of Patrick Manson Building at No. 7 Sassoon Road and construction of a university corridor at Sassoon Road Campus** – the project is in an exploratory stage. Consequential to the relocation of Patrick Manson Residence to

the new facilities in around 2024, Patrick Manson Building could be demolished by phases for the construction of a new academic building containing laboratories and associated facilities. Moreover, with the increasing student population and all the additional academic buildings at Sassoon Road, there is a need to establish a safe and effective pedestrian access for a contiguous, holistic Queen Mary Hospital – Sassoon Road medical campus physical infrastructure, which is an elevated pedestrian network connecting different buildings with a view to forming a university corridor.

6. We plan to submit funding proposals to the PWSC and FC for the remaining renovation works in Choh-Ming Li BMSB of CUHK as mentioned in the above paragraph 5(a) and consultancy study for construction of additional academic building and ancillary facilities for Faculty of Medicine of HKU (Phase 2) as mentioned in the above paragraph 5(h) in the 2020-21 legislative session. The site plans of the two projects are at **Enclosures 1 and 2**.

FINANCIAL IMPLICATIONS

7. As set out in 2018 Policy Address, the Government has earmarked about \$20 billion out of the provision of \$300 billion for short, medium and long-term works projects to upgrade and increase the healthcare teaching facilities of CUHK, PolyU and HKU.

8. The projects have no impact on tuition fees. In accordance with the established practice, the universities will operate the building/facilities and the proposal has no additional recurrent cost implications on the Government.

WAY FORWARD

9. Subject to Members' comments, the Government will submit to the PWSC and FC the funding proposals for the projects set out in paragraph 6 for the expansion of healthcare-related teaching facilities as

soon as practicable, to avoid hardware constraints undermining the capacity of universities in stepping up the training of healthcare professionals.

Food and Health Bureau

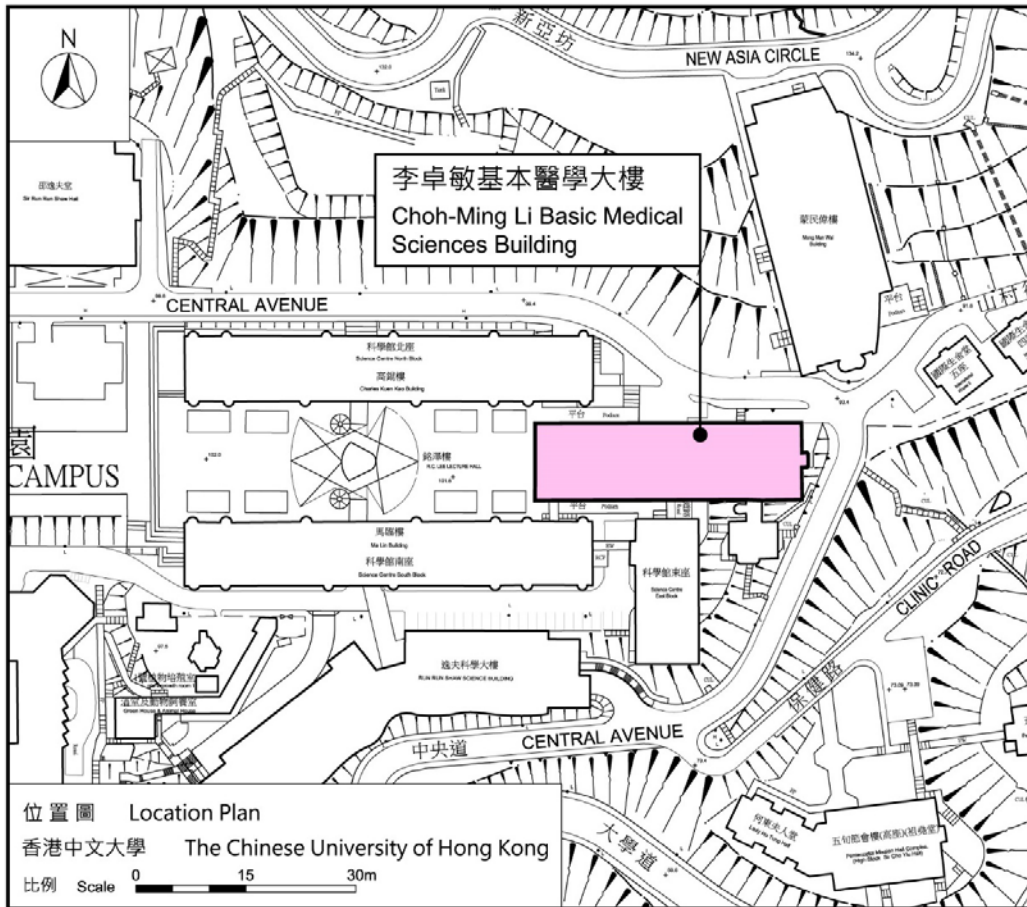
Education Bureau

March 2021

香港中文大學
李卓敏基本醫學大樓設施翻新工程 (餘下部分)

The Chinese University of Hong Kong
Renovation of facilities in Choh-Ming Li Basic Medical Sciences Building
(Remaining Works)

工地平面圖 Site plan



圖例 Legend

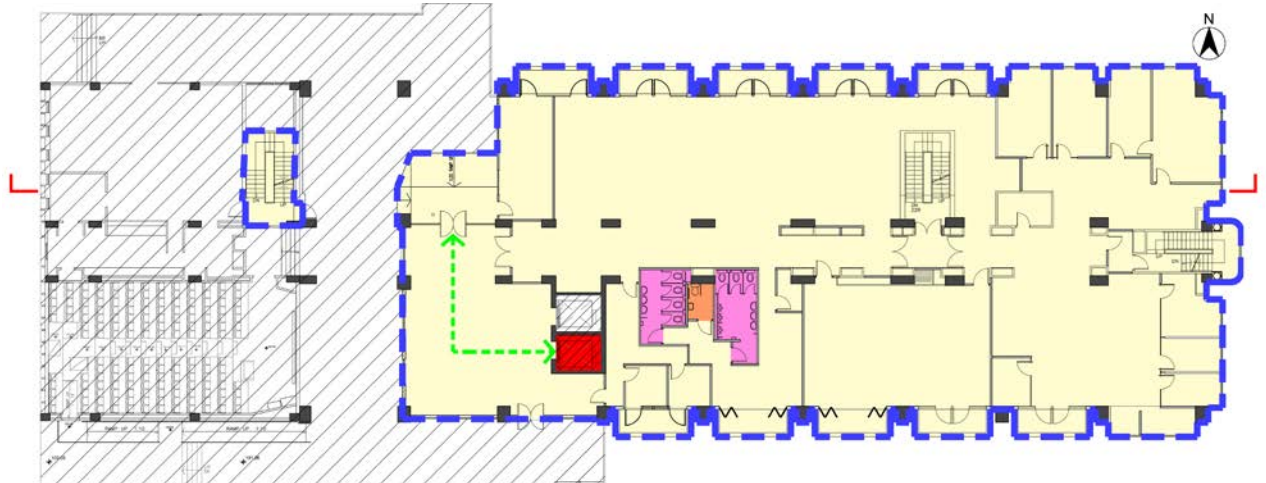
- 工地 Site
- 工地範圍 Site Boundary



香港中文大學
李卓敏基本醫學大樓設施翻新工程 (餘下部分)

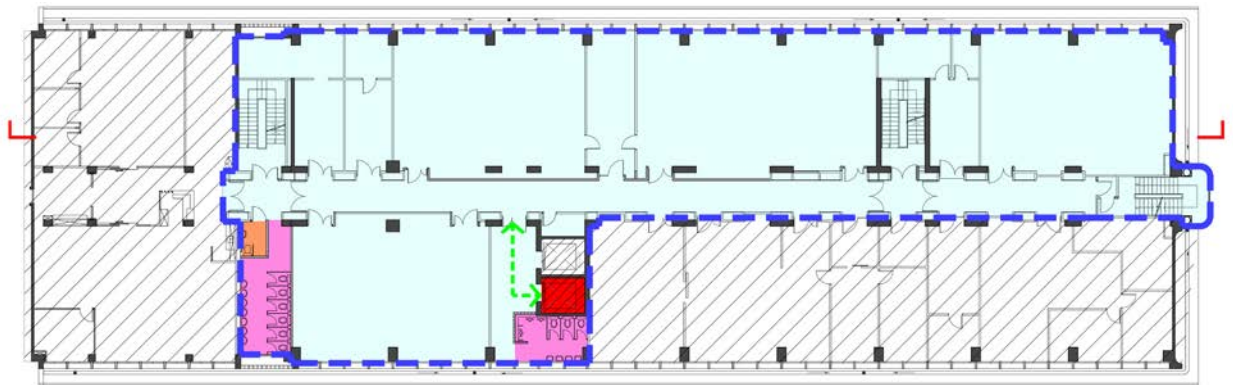
The Chinese University of Hong Kong
Renovation of facilities in Choh-Ming Li Basic Medical Sciences Building
(Remaining Works)

樓層平面圖 Floor plan



地下平面圖
Ground Floor Plan

樓層平面圖 Floor plan



一樓平面圖
First Floor Plan

圖例 Legends



施工區域
Works Area



現有暢通易達升降機
Existing Accessible Lift



教職員辦公室 / 通道
Academic & Admission Office / Circulation



互動教學實驗室 / 通道
Interactive Teaching Laboratory / Circulation



暢通易達洗手間
Accessible Toilet



洗手間
Toilet



非改建範圍
Non-Renovated Area

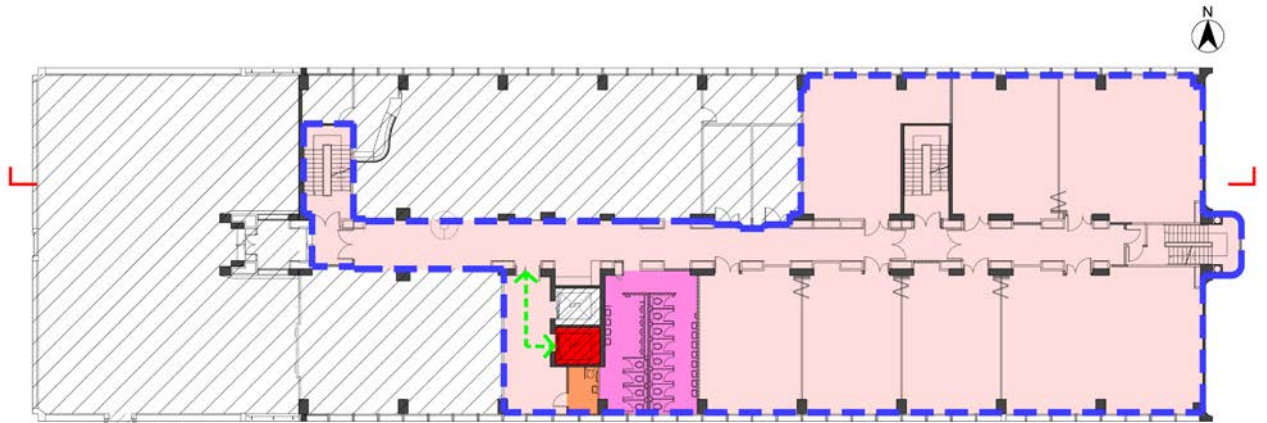


無障礙通道
Barrier Free Access

香港中文大學
李卓敏基本醫學大樓設施翻新工程 (餘下部分)

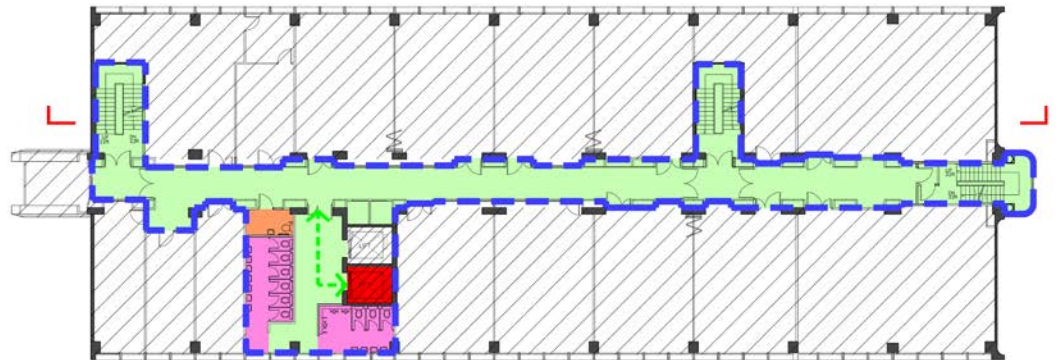
The Chinese University of Hong Kong
Renovation of facilities in Choh-Ming Li Basic Medical Sciences Building
(Remaining Works)

樓層平面圖 Floor plan











三樓平面圖
Third Floor Plan

樓層平面圖 Floor plan



LG1 至 6 樓公共空間平面圖
Typical Communal Area from LG1/F to 6/F Plan

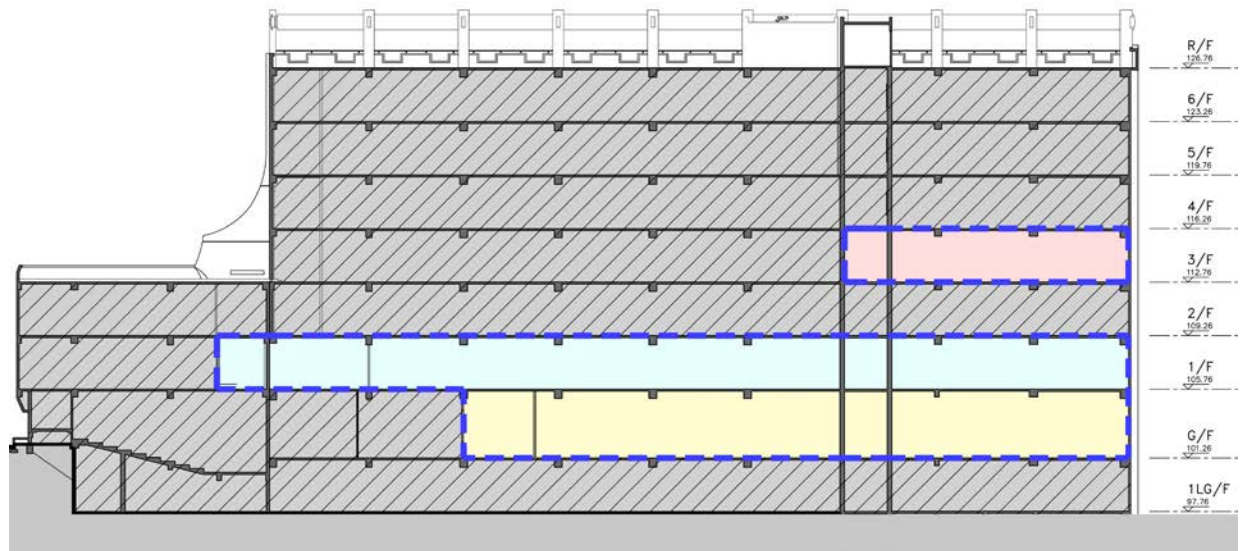
圖例 Legends

- | | | | |
|---|--|---|------------------------------|
|  | 施工區域
Works Area |  | 暢通易達洗手間
Accessible Toilet |
|  | 現有暢通易達升降機
Existing Accessible Lift |  | 洗手間
Toilet |
|  | 互動教學課室 / 通道
Interactive Classroom / Circulation |  | 非改建範圍
Non-Renovated Area |
|  | 通道
Circulation |  | 無障礙通道
Barrier Free Access |


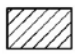


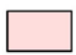
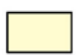
香港中文大學
李卓敏基本醫學大樓設施翻新工程 (餘下部分)

The Chinese University of Hong Kong
Renovation of facilities in Choh-Ming Li Basic Medical Sciences Building
(Remaining Works)

截面圖 Sectional Drawing



圖例 Legends

- | | |
|--|--|
|  施工區域
Works Area |  非改建範圍
Non-Renovated Area |
|  互動教學實驗室
Interactive Teaching Laboratory |  無障礙通道
Barrier Free Access |
|  互動教學課室
Interactive Classroom | |
|  教職員辦公室
Academic & Admission Office | |

香港中文大學
李卓敏基本醫學大樓設施翻新工程 (餘下部分)

**The Chinese University of Hong Kong
Renovation of facilities in Choh-Ming Li Basic Medical Sciences Building
(Remaining Works)**

參考資料 / 圖片

Reference Materials / Photos



互動教學實驗室
Interactive Teaching Laboratories



互動多功能教室
Interactive Multi-Purpose Classroom

香港大學醫學院的新增教學大樓及附屬設施的建設(第二期)

Construction of additional academic building and ancillary facilities for Faculty of Medicine of the University of Hong Kong (Phase 2)

工地平面圖 Site Plan

