

For Information

Legislative Council Panel on Education

Annual Progress Report on Implementation of the Hostel Development Fund

Purpose

This paper reports to Members the progress on the implementation of student hostel projects funded under the Hostel Development Fund (HDF) as of June 2022.

Background

2. In July 2018, the Legislative Council (LegCo) Finance Committee (FC) approved a one-off grant of \$10,303.7 million for establishing the HDF for six University Grants Committee (UGC)-funded universities with a shortfall in hostel places to expedite the development of student hostels. The six universities are City University of Hong Kong (CityU), Hong Kong Baptist University (HKBU), The Chinese University of Hong Kong (CUHK), The Hong Kong Polytechnic University (PolyU), The Hong Kong University of Science and Technology (HKUST), and The University of Hong Kong (HKU). The HDF covers a total of 15 hostel projects of the universities concerned to provide 13 473 hostel places (see FCR(2018-19)35).

3. With the FC's approval, the UGC Secretariat signed service agreements with the universities concerned and disbursed in full the capital grants allocated to these universities. Annual progress reports on the implementation of the HDF were submitted to the LegCo Panel on Education in 2019, 2020 and 2021 vide LC Paper No. CB(4)1123/18-19(01), CB(4)778/19-20(01) and CB(4)1645/20-21(01) for Members' information.

Implementation Progress

4. The universities concerned are required to submit quarterly progress reports on the hostel projects to the Government until the completion and submission of the Statement of Final Accounts. So far, the universities have commenced construction works of nine of the hostel projects which are scheduled for completion between 2022 and 2026. Details of the projects under construction based on the universities' latest reports are set out in Table 1 of Enclosure 1 for Members' information.

5. As for the remaining six hostel projects, the universities are gradually proceeding with the preparatory work (see Table 2 of Enclosure 1 for more information). The detailed design of PolyU's Student Hostel at Tat Hong Avenue, Kowloon Tong has been completed since the last progress report (see Enclosure 2 for details). Construction works are scheduled to commence in April 2023 with target completion date set in October 2027.

Way Forward

6. Members are invited to note the latest implementation progress of the HDF. The UGC Secretariat will continue to monitor the progress. Annual progress reports will be submitted to Members.

Education Bureau
University Grants Committee Secretariat
July 2022

Enclosure 1

Progress of Student Hostel Projects under the HDF (as of June 2022)

Table 1 - Hostel projects for which construction works have commenced

University	Hostel Project	Capital Grant Disbursed under HDF (\$ million) (MOD)	Number of Hostel Places to be provided	Commencement of Construction Works	Target Completion Date
CityU	Student Hostel at Whitehead, Ma On Shan	1,445.828	2 168	January 2022	December 2025
HKBU	Hostel Complex at 30 Renfrew Road, Kowloon Tong	1,161.598	1 726	February 2019	October 2023
CUHK	300-place Student Hostel at New Asia Campus	196.425	300	June 2019	October 2022
	250-place Student Hostel at United Campus	168.250	250	April 2022	December 2024
PolyU	Student Hostel at Ho Man Tin Slope	1,268.405	1 279	October 2020	July 2026
HKUST	Halls 10 – 13 Student Residences (formerly known as “1415-place Student Hostel”)	952.295	1 551 (1 415 places funded by HDF plus 136 additional privately-funded places)	July 2020	December 2023
HKU	Student Residence at Wong Chuk Hang Site	817.552	1 224	August 2019	May 2023
	Student Residence at Mui Fong Street	164.580	250	May 2019	July 2022
	Student Residence at High West Site	631.274	938	November 2020	May 2024

Table 2 - Hostel projects for which construction works have yet to commence

University	Hostel Project	Capital Grant Disbursed under HDF (\$ million) (MOD)	Number of Hostel Places to be provided	Target Works Commencement Date	Target Completion Date
CityU	Student Hostel at Tat Hong Avenue, Kowloon Tong	992.007	999	October 2023	October 2027
CUHK	300-place Student Hostel at Shaw Campus	201.900	300	July 2022	December 2024
	300-place Student Hostel at Chung Chi Campus	201.900	300	July 2023	December 2026
	250-place Student Hostel at Wu Yee Sun Campus	168.250	250	July 2023	June 2027
	394-place Student Hostel in Area 39	265.162	394	July 2023	June 2027
PolyU	Student Hostel at Tat Hong Avenue, Kowloon Tong (see <u>Enclosure 2</u>)	1,668.240	1 680	April 2023	October 2027

The Hong Kong Polytechnic University (PolyU) Student Hostel at Tat Hong Avenue, Kowloon Tong

The project site is located on a slope at Tat Hong Avenue in Kowloon Tong. The proposed scope of works includes the construction of four multi-storey hostel blocks with a net operational floor area (NOFA)¹ of around 19 575 square metres (m²), comprising –

- (a) a total of **1 680 student hostel places** with a NOFA of around 14 030 m², including accommodation for wardens, tutors, managers and staff;
- (b) **common facilities** with a NOFA of around 4 530 m², including a canteen, multi-purpose rooms, common rooms, pantries, music rooms, sport and recreation rooms; and
- (c) **supporting facilities** with a NOFA of around 1 015 m², including a management office, laundries, kitchens and store rooms.

2. PolyU plans to commence the construction works in April 2023 for completion by October 2027.

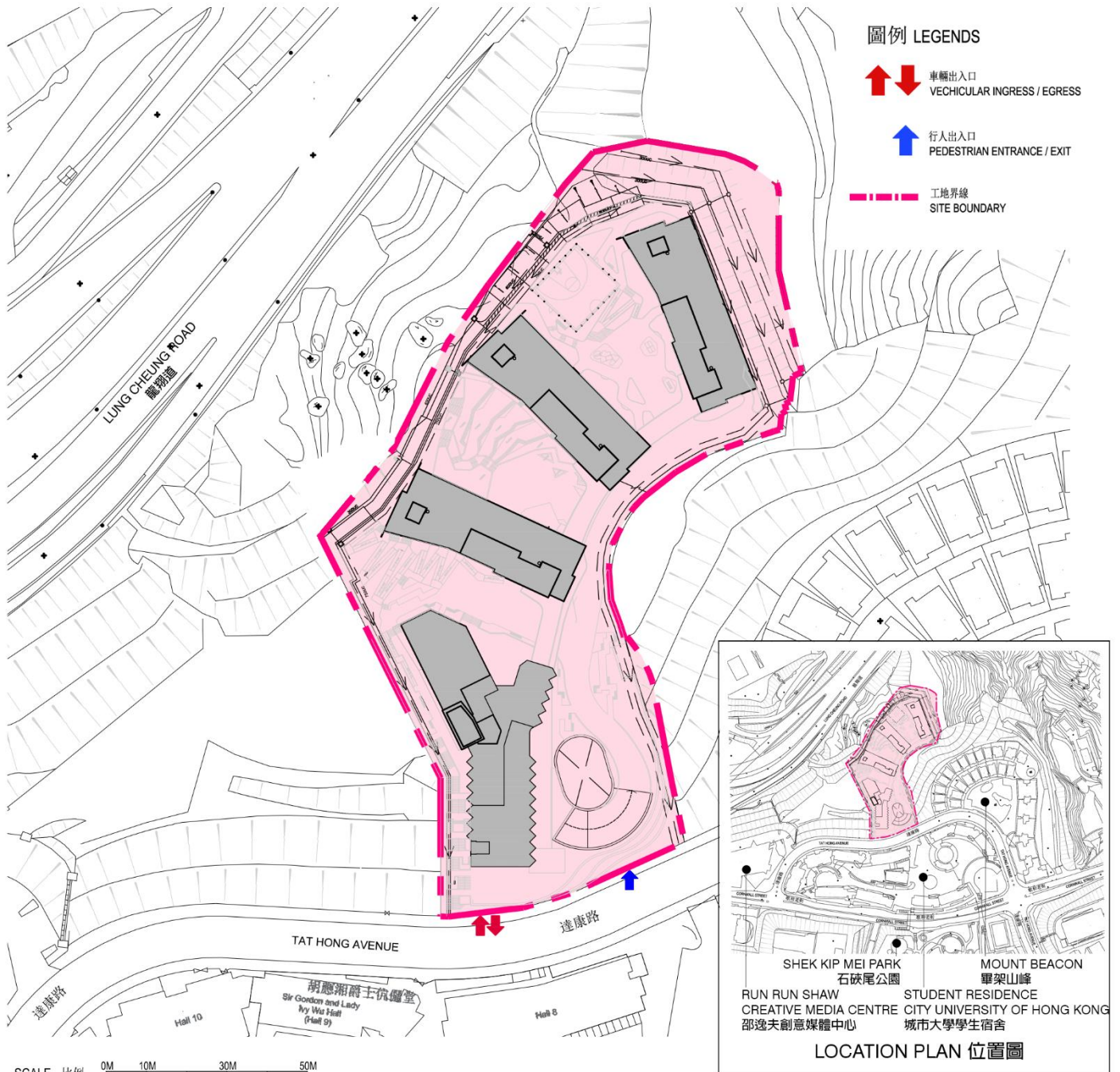
3. A location and site plan, a sectional drawing and an artist's impression of the project are at Annexes A, B and C to Enclosure 2 respectively.

¹ NOFA is the floor area allocated to the users of a building for carrying out the intended activities. Unlike the construction floor area which takes into account all areas within the building structure envelope, NOFA does not include areas for the basic facilities (if any) such as toilets, lift lobbies, stair halls, public or shared corridors, stairwells, escalators and lift shafts, pipe or services ducts, barrier-free access facilities, gender mainstreaming facilities, refuse rooms, flat roofs, car parking spaces, loading and unloading areas and mechanical plant rooms, etc.

香港理工大學
九龍塘達康路學生宿舍

The Hong Kong Polytechnic University
Student Hostel at Tat Hong Avenue, Kowloon Tong

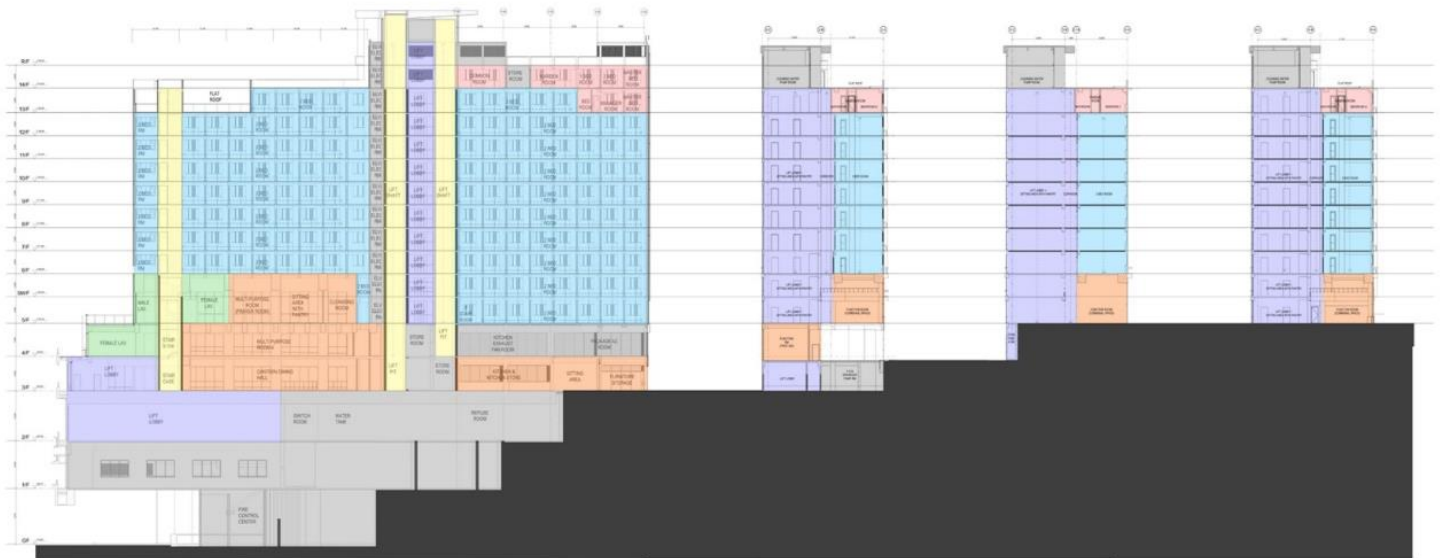
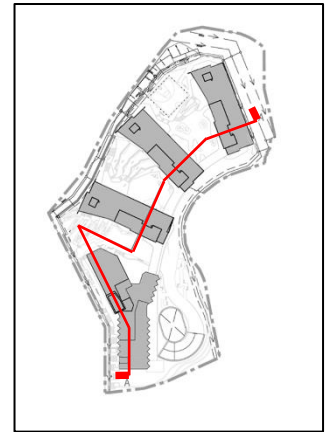
位置及工地平面圖
Location and Site Plan



香港理工大學
九龍塘達康路學生宿舍






The Hong Kong Polytechnic University
Student Hostel at Tat Hong Avenue, Kowloon Tong

截面圖
Section



SCALE 比例 0M 10M 30M 50M

圖例 LEGENDS

- | | | | |
|---|---|--|---|
|  學生宿舍
HOSTEL ROOMS |  宿舍設施
HOSTEL FACILITIES |  機電房間 / 停車場 / 儲物室
PLANT ROOMS / CARPARK / STORE ROOMS |  洗手間
LAVATORY |
|  職員宿舍
STAFF ACCOMMODATION |  電梯及樓梯
LIFT & STAIRCASE |  電梯大堂 / 大堂 / 走廊
LIFT LOBBY / ENTRANCE LOBBY / CORRIDOR | |

香港理工大學
九龍塘達康路學生宿舍

**The Hong Kong Polytechnic University
Student Hostel at Tat Hong Avenue, Kowloon Tong**

構思圖
Artist's impression



從東南面望向建築物外觀構思圖
Perspective view of the building from the southeast direction