



Legislative Council of the
Hong Kong Special Administrative Region
Delegation of the Panel on Health Services

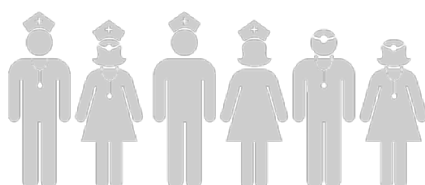
Report of the duty visit to the hospitals of Tier 3 Class A in Mainland cities of the Greater Bay Area

22 June 2024



TABLE OF CONTENTS

	Page
Acknowledgements	
Chapter	
1 Introduction	1-4
2 Visits and exchanges	5-19
3 Observations and recommendations	20-23
Appendices	
1 List of delegation members and accompanying staff of the Legislative Council Secretariat	1-3
2 Visit programme	1



ACKNOWLEDGEMENTS

The delegation of the Panel on Health Services (“the Panel”) of the Legislative Council (“LegCo”) of the Hong Kong Special Administrative Region (“HKSAR”) would like to extend its heartfelt gratitude to the staff of the ZhongShan Chenxinghai Hospital of Integrated Traditional Chinese and Western Medicine (“ZS CXH Hospital”) and the University of Hong Kong—Shenzhen Hospital (“HKU-SZH”) for their warm hospitality, detailed presentations on their facilities and services, as well as the exchange of views and sharing of ideas with members of the delegation during the visit, which made the visit highly rewarding.

The delegation would also like to express sincere appreciation to the Health Bureau (“HHB”) of the HKSAR Government for its invaluable assistance in coordinating with the receiving units and planning the visit programme, and to Professor LO Chung-mau, Secretary for Health, for leading a delegation comprising staff from HHB, the Department of Health and the Hospital Authority (“HA”) to join the duty visit, thus enhancing communication between the Administration and LegCo Members. Members look forward to leveraging the shared insights to further promote cross-boundary medical cooperation in the Guangdong-Hong Kong-Macao Greater Bay Area (“GBA”).



CHAPTER 1 — INTRODUCTION

Purpose of the report

1.1 The delegation of the Panel, together with the delegation of the HKSAR Government, went to Zhongshan and Shenzhen on 22 June 2024 to conduct a duty visit to two hospitals of Tier 3 Class A (“Grade 3A”) (i.e. ZS CXH Hospital and HKU-SZH) to gain an understanding of their medical standards, services and facilities, as well as the implementation of the Elderly Health Care Voucher Greater Bay Area Pilot Scheme (“EHCV GBA Pilot Scheme”), and to explore ways to further promote cross-boundary medical cooperation. This report sets out the major findings and observations of the delegation.

Background

1.2 According to the Census and Statistics Department of the HKSAR Government, as at mid-2022, there were about 529 500 Hong Kong residents usually staying in Guangdong Province, with about 17% (about 89 100) of them being persons aged 65 or above.

1.3 As a facilitation measure for Hong Kong residents working and living in the Mainland cities of GBA to seek healthcare services, the National Medical Products Administration announced the “Work Plan for Regulatory Innovation and Development of Pharmaceutical and Medical Device in the Guangdong-Hong Kong-Macao Greater Bay Area” in November 2020, which allows designated healthcare institutions operating in GBA to use Hong Kong-registered drugs with urgent clinical use, and medical devices used in Hong Kong public hospitals with urgent clinical use, subject to the approval of Guangdong Province (i.e. the policy of using Hong Kong-registered drugs and medical devices used in Hong Kong public hospitals in GBA).

1.4 Furthermore, to provide convenience to eligible Hong Kong elderly persons residing in Shenzhen or nearby areas,¹ eligible elderly persons may since October 2015 use Elderly Health Care Vouchers (“EHCVs”) to pay for the fees of designated outpatient healthcare services at HKU-SZH. Starting from 17 April 2023, the use of EHCVs at HKU-SZH has been further extended to cover the Huawei Community Health

¹ Eligible Hong Kong elderly persons refer to those aged 65 or above holding a valid Hong Kong Identity Card or Certificate of Exemption issued by the Immigration Department.

CHAPTER 1 — INTRODUCTION

Centre, an offsite medical institution set up by HKU-SZH. Besides, the HKSAR Government also launched the “Pilot Scheme for Supporting Patients of the Hospital Authority in the Guangdong-Hong Kong-Macao Greater Bay Area” on 10 May 2023 such that eligible Hong Kong citizens, including elderly persons, may receive subsidized medical consultation services at HKU-SZH.

1.5 In his 2023 Policy Address, the Chief Executive put forward an initiative of the EHCv GBA Pilot Scheme to extend the coverage of EHCvs to suitable medical institutions in GBA in 2024. The preliminary target is to cover about five additional medical institutions as trial service points for provision of primary healthcare services at GBA cities where Hong Kong elderly have closer ties with, as well as to include individual designated medical institutions providing dental services in places such as Shenzhen. The Government subsequently announced in February 2024 that seven medical institutions in GBA have been included in the EHCv GBA Pilot Scheme, including five medical institutions providing integrated services (all with dental services) and two dental institutions. EHCvs are gradually applicable in these medical institutions from June 2024,² benefiting nearly 1.7 million eligible Hong Kong elderly persons.

² The names of the seven pilot medical institutions and the effective dates of the application of EHCvs in these medical institutions are listed in the table below:

Medical institutions	Effective date
The First Affiliated Hospital, Sun Yat-sen University (in Yuexiu District, Guangzhou)	28 June 2024
ZhongShan Chenxinghai Hospital of Integrated Traditional Chinese and Western Medicine (in Zhongshan)	18 July 2024
Shenzhen New Frontier United Family Hospital (in Futian District, Shenzhen)	14 August 2024
Shenzhen C.K.J Stomatological Hospital (in Luohu District, Shenzhen)	14 August 2024
Dental Bauhinia Specialty Service Center (Shenzhen)/Dental Bauhinia General Care Center (Shenzhen)(in Futian District, Shenzhen)	14 August 2024
Nansha Division of the First Affiliated Hospital, Sun Yat- sen University (in Nansha District, Guangzhou)	6 September 2024
Dongguan Tungwah Hospital (in Dongguan)	6 September 2024

CHAPTER 1 — INTRODUCTION

1.6 To further promote cross-boundary medical cooperation in GBA and to learn about the implementation of relevant policies (the EHCV GBA Pilot Scheme in particular), the Panel agreed at its meeting on 14 July 2023 to Mr Kingsley WONG's proposal to conduct a duty visit to HKU-SZH and Grade 3A hospitals in Mainland cities of GBA. Subsequently, at its meeting on 10 May 2024, the Panel further agreed to invite Government officials to conduct a joint visit to HKU-SZH and ZS CXH Hospital on 22 June 2024. The proposed duty visit was endorsed at the meeting of the House Committee of LegCo on 7 June 2024.

Purpose of the duty visit

1.7 The objectives of the duty visit are as follows:

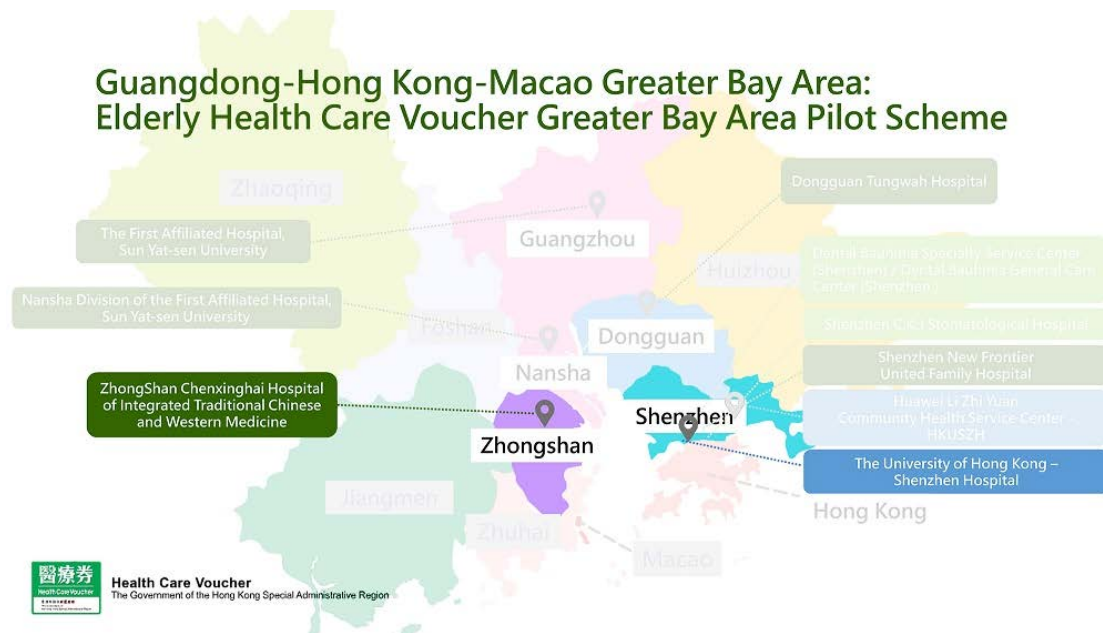
- (a) to gain insights into the medical standards, services and facilities (including dental services) of Grade 3A hospitals in the Mainland;
- (b) to learn about the implementation of the EHCV GBA Pilot Scheme; and
- (c) to see how cross-boundary medical cooperation can be further promoted, including relaxing the admission of HA patients to HKU-SZH for specialist surgeries and medical check-ups, with a view to providing convenience to Hong Kong people and relieving the pressure on public hospital services.

CHAPTER 1 — INTRODUCTION



CHAPTER 2 — VISITS AND EXCHANGES

Visiting the two hospitals to learn about their medical standards, services and facilities



Source: Government Press Release

Zhongshan Chen Xinghai Hospital of Integrated Traditional Chinese and Western Medicine

Overview of the hospital

2.1 ZS CXH Hospital is the first stop of the delegation's visit. Located in Xiaolan, Zhongshan, ZS CXH Hospital is the country's first Grade 3A hospital of integrated traditional Chinese and Western medicine co-developed by Guangdong and Hong Kong,³ which offers a comprehensive range of services including medical treatment, teaching, scientific research, preventive healthcare and rehabilitation. Led by a Hong Kong medical team with the incorporation of modern medical management practices, ZS CXH Hospital is one of the first batch of Mainland medical institutions under the policy of using Hong Kong-registered drugs and medical devices used in Hong Kong public hospitals in GBA. It stands out as a flagship hospital of integrated Chinese-Western medicine in Zhongshan and has been included in the EHCV GBA Pilot Scheme since February 2024.

³ ZS CXH Hospital was co-developed by the Zhongshan Municipal Government, Hong Kong Chan Sing Hoi Medical Investment Group Limited and various medical institutions in Hong Kong (e.g. the CUHK Medical Centre and the School of Chinese Medicine of Hong Kong Baptist University).

CHAPTER 2 — VISITS AND EXCHANGES



The delegation poses for a group photo with representatives of ZS CXH Hospital

2.2 Founded in 1958, ZS CXH Hospital has a gross floor area of 120 000 square metres with a bed complement of 1 100, and is equipped with state-of-the-art medical equipment. Collaborating with the medical teams in Hong Kong, ZS CXH Hospital offers inter-specialty consultation and two-way referral services for patients in Guangdong and Hong Kong. Notably, ZS CXH Hospital is also a designated medical institution for national medical insurance.

2.3 The hospital has a general outpatient department, a traditional Chinese medicine department, a health management centre, a dental department, an ophthalmology department, a traditional Chinese medicine rehabilitation and physiotherapy department, various internal and external specialist departments, as well as an oncology centre, a pulmonary medicine centre, and a preventive medicine centre, providing popular services such as integrated Chinese and Western medicine diagnosis and treatment, rehabilitation, disease prevention, health construction and health maintenance to the general public. It also offers high-end international medical services on demand.

CHAPTER 2 — VISITS AND EXCHANGES

2.4 ZS CXH Hospital has set up the city's first International Medical Centre, which caters to patients both locally and abroad, and offers bilingual (Chinese-English and Chinese-Japanese) escort services for medical appointments, one-stop medical treatment in Hong Kong and cross-border escort services, etc. Moreover, there are 20 Hong Kong medical practitioners registered in ZS CXH Hospital.

Touring the hospital

2.5 Representatives of ZS CXH Hospital led the delegation on a tour of its Health Construction Administration and Rehabilitation Department, Stomatology Department and 3D Printing Application Centre, as well as Health Management Centre, International Medical Centre and Integrated Endoscopy Centre from which most patients from Hong Kong seek treatment. Members note that apart from the above-mentioned three centres, specialties that are most frequently visited by Hong Kong people also include acupuncture/ tui-na/ rehabilitation/ Chinese medicine, ophthalmology centre and oral maxillofacial centre (dentistry). Members also had hands-on experience on the flow of receiving medical services at the hospital.



The delegation visits the 3D Printing Application Centre of ZS CXH Hospital

CHAPTER 2 — VISITS AND EXCHANGES

2.6 Members are impressed by how ZS CXH Hospital makes use of innovative 3D printed auxiliary device in replacement of traditional plaster cast treatment. They are also introduced to the time-honoured bee venom acupuncture therapy,⁴ which is definitely eye-opening. Members also note that ZS CXH Hospital puts much thought into children's overall experience during medical treatment, and has even set up pediatric dental chairs and nebulization rooms where children are treated to cartoons.



Representatives of ZS CXH Hospital demonstrate to the delegation the bee venom acupuncture therapy

⁴ Bee venom acupuncture therapy is a natural therapy that uses the stinger of a bee as a needle to perform different acupuncture techniques along the meridians, skin and acupoints.

CHAPTER 2 — VISITS AND EXCHANGES



The delegation is briefed by ZS CXH Hospital on various Chinese medicine preparations developed by the hospital

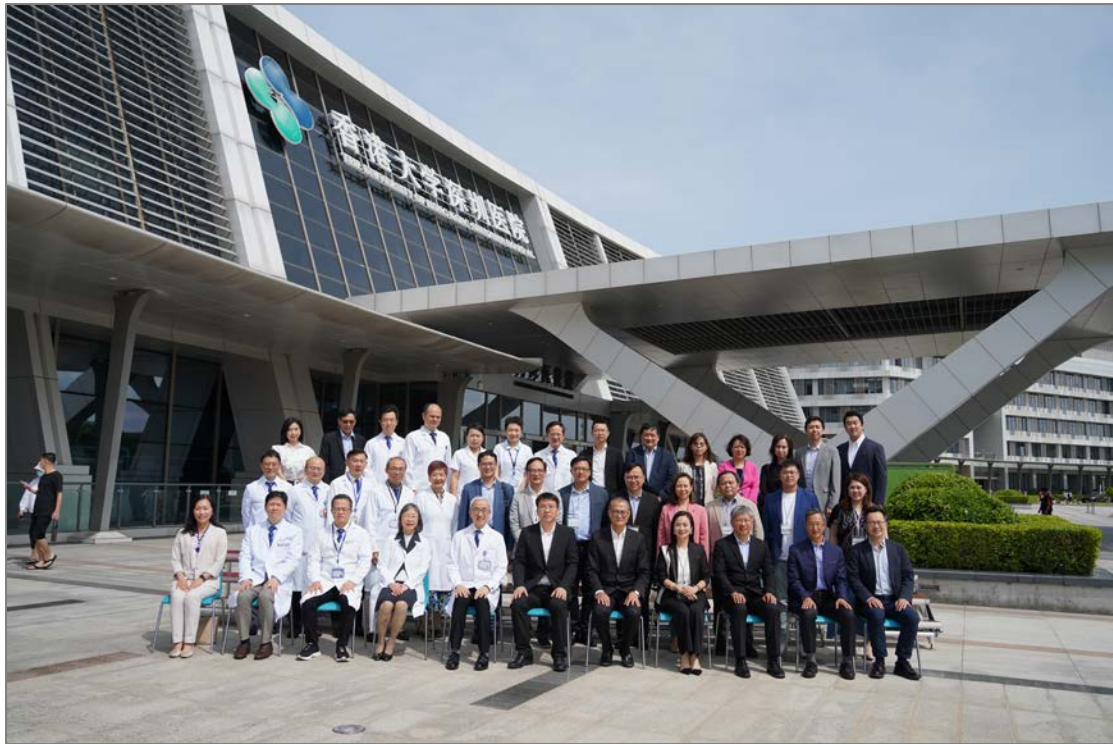
University of Hong Kong-Shenzhen Hospital

Overview of the hospital

2.7 In the afternoon, the delegation headed from Zhongshan to HKU-SZH. Situated in Futian District, Shenzhen, HKU-SZH is a major comprehensive public hospital fully funded by the Shenzhen Municipal Government and it serves as an affiliate hospital of the HKU Faculty of Medicine with the introduction of HKU's modern management model. HKU-SZH currently runs with 2 000 beds and has commenced its second-phase expansion project. With the construction of an additional inpatient building and a research facility, the number of beds will increase by 1 000. The expansion project is scheduled for completion by the end of 2025.



CHAPTER 2 — VISITS AND EXCHANGES



The delegation poses for a group photo with representatives of HKU-SZH

2.8 Since its opening on 1 July 2012, HKU-SZH has progressively introduced world-class advanced hospital management experience and medical technology to deliver high quality healthcare services for the public, and has been at the forefront of shaping the direction of medical system reform for the country. HKU-SZH has set up an international medical centre with a medical team comprising mainly professor-ranked medical practitioners from overseas and HKU, which offers high-end medical services and health assessments of international standards. Huawei Community Health Service Centre has also been established to provide primary healthcare services.

2.9 HKU-SZH attained accreditation by the Australia Council on Healthcare Standards in September 2015, followed by the status as a national Grade 3A hospital in November 2017 and the recognition as a high-level hospital of Guangdong Province in June 2018. In July 2021, it was designated as a pilot hospital for national high-quality development of public hospitals, and in December the same year, it was selected as a pilot hospital for establishing and improving modern hospital management system throughout the country. In April 2024, HKU-SZH became one of the first hospitals accredited under the China's International Hospital Accreditation Standards. Its Department of Orthopaedics was approved as a national key clinical specialist department in July 2024.

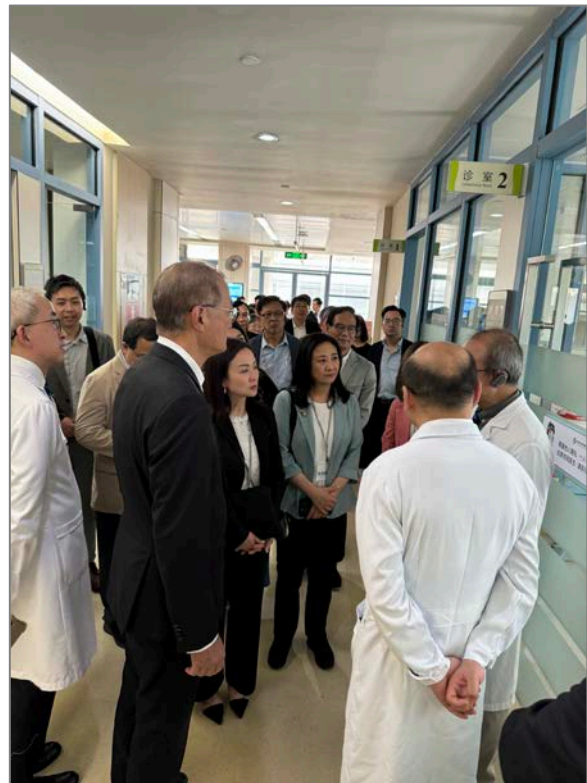
CHAPTER 2 — VISITS AND EXCHANGES

Touring the hospital

2.10 Representatives of HKU-SZH took the delegation on a tour of the hospital and gave a briefing on its operating model, focusing on its Department of Family Medicine, Department of Dental Surgery and Department of Orthopaedics, which are most frequently visited by Hong Kong people. HHB's representative also demonstrated on site the flow of using the Electronic Health Record Sharing System ("eHealth"). Members were very impressed by HKU-SZH's fully automated dispensary, which enables patients to get the medication in three to five minutes and even offers the convenience of home delivery.



Members visit the fully automated dispensary of HKU-SZH



Members learn about the dental services provided by HKU-SZH

Exchange with the two hospitals

2.11 During the visit, the delegation engaged in seminars respectively with the managements of ZS CXH Hospital and HKU-SZH. ZS CXH Hospital briefed the delegation on its healthcare and supporting services available for Hong Kong and Macao citizens, which has deepened Members' understanding of the facilities, operation and service standards

CHAPTER 2 — VISITS AND EXCHANGES

of Grade 3A hospitals in the Mainland. HKU-SZH shared with the delegation the experience and practical arrangement in relation to the provision of cross-boundary medical services. The delegation also exchanged views with officials of HHB and representatives of the two hospitals on the following issues.

Implementation of the Elderly Health Care Voucher Greater Bay Area Pilot Scheme

2.12 Members note that, starting from 18 July 2024, eligible Hong Kong elderly persons might use EHCVs to pay for outpatient healthcare services provided by 13 designated departments of ZS CXH Hospital, namely the General Outpatient Clinic, Internal Medicine Department, Surgical Department, Health Check Center, Disease Prevention Center, Emergency Department, Dental Department, Disease Prevention Center by Herbal Medicine, Rehabilitation Department, Massage Department, Orthopaedics Department, Gynaecology Department and Ophthalmology Department.

2.13 Members are highly concerned about whether the amount of EHCVs was sufficient to cover the healthcare expenses, and enquired about the level of hospital charges and the proportion of Hong Kong residents currently working in the Mainland who pay for hospital service charges with Mainland medical insurance.

2.14 Members note that the country applies national treatment to Hong Kong citizens, who (including elderly persons using EHCVs) may choose to use healthcare services at large hospitals (including ZS CXH Hospital and HKU-SZH) at prices applicable to medical insurance holders stipulated by the country. The charges, which have been uploaded to the websites of the hospitals, are open and transparent. In the case of ZS CXH Hospital, the fee for general consultation including medication would be less than RMB100. Moreover, like Mainland residents, Hong Kong citizens might make appointment for consultations through WeChat, telephone and on-site booking.

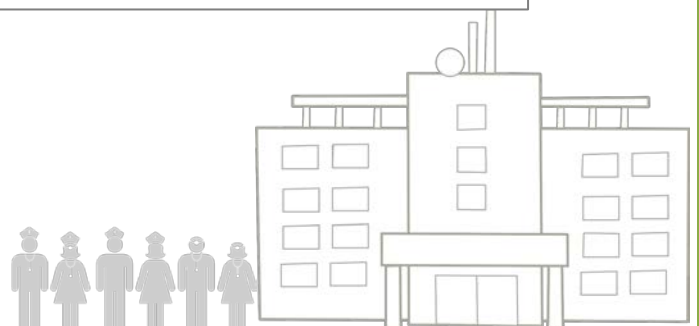
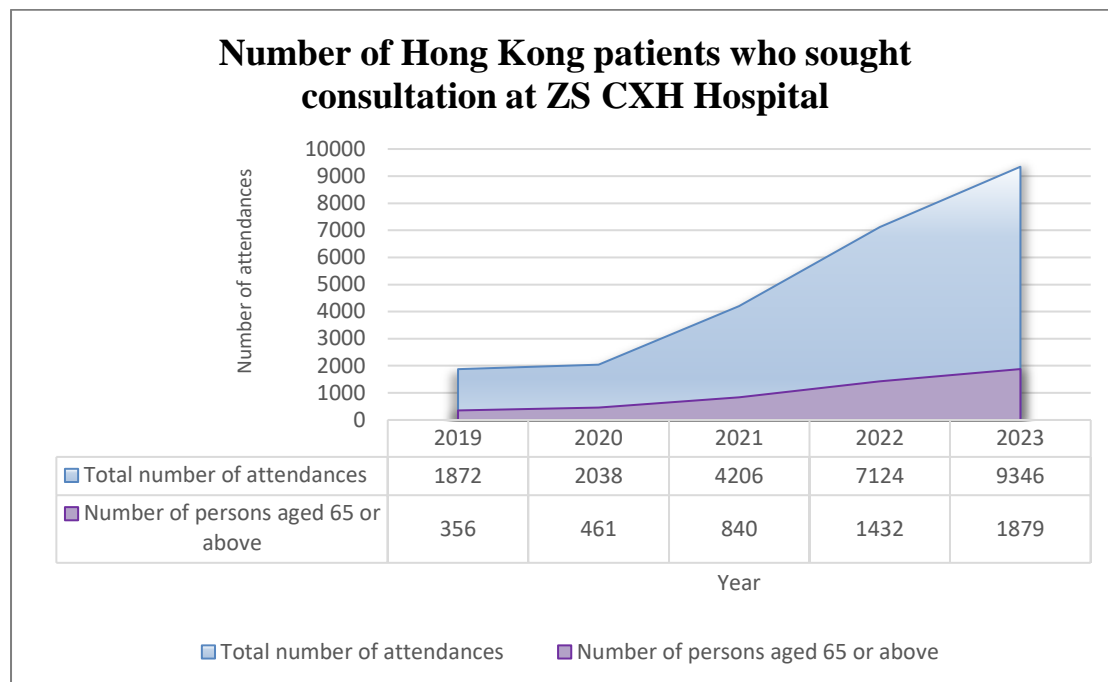
2.15 As regards medical insurance, Members learn that at present, most patients in the Mainland have taken out medical insurance which covers part of their medical expenses, but the amount of medical insurance coverage vary among different provinces and cities. Remarkably, in Shenzhen, medical insurance may reimburse up to 90% of the medical expenses incurred. If eligible Hong Kong citizens have taken out

CHAPTER 2 — VISITS AND EXCHANGES

Mainland medical insurance, part of their medical expenses could be covered. At present, most Hong Kong citizens using services provided by the two hospitals are uninsured.

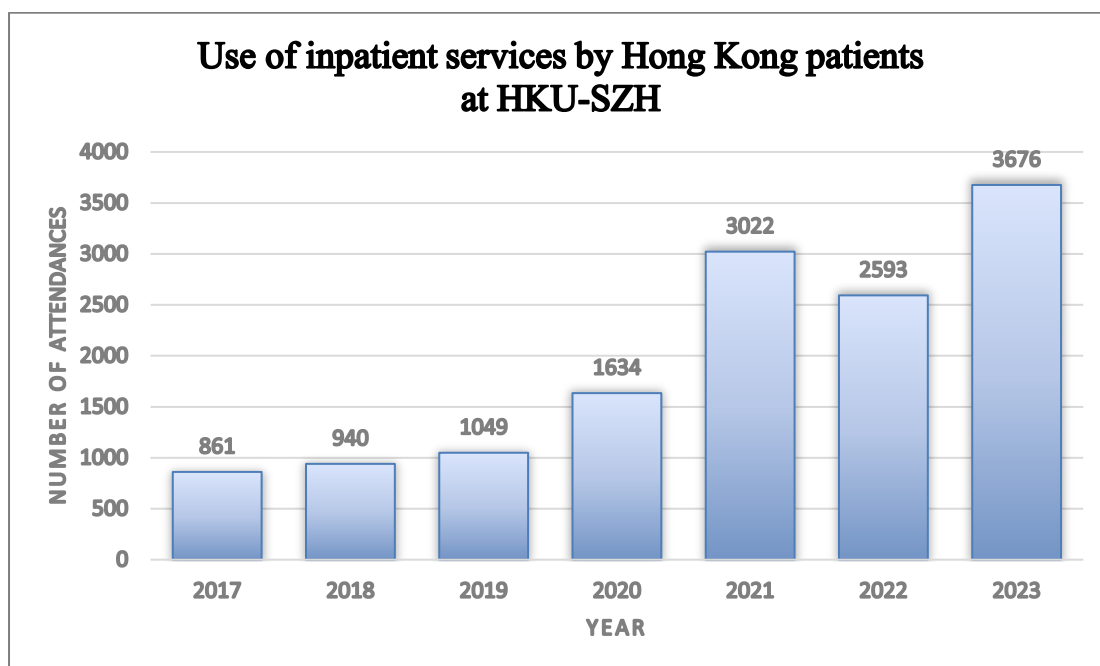
Cross-boundary medical cooperation

2.16 Members note a rising number of Hong Kong people who seek outpatient medical services at ZS CXH Hospital, with the number of attendances surging from 1 872 in 2019 (including 356 patients aged 65 or above) to 9 346 in 2023 (including 1 879 patients aged 65 or above). Following the commissioning of the Shenzhen-Zhongshan Link in end-June 2024 which has significantly shortened the travelling time between Hong Kong and Zhongshan, Members anticipate that more Hong Kong people will reside in Zhongshan and use the medical services there. In this connection, Members are concerned whether the implementation of cross-boundary medical measures would bring impacts to the social resources and livelihoods of citizens in the Mainland, and how ZS CXH Hospital would deploy its manpower. ZS CXH Hospital advised that its manpower would be enhanced to ensure that normal medical services provided to Mainland residents would not be affected.

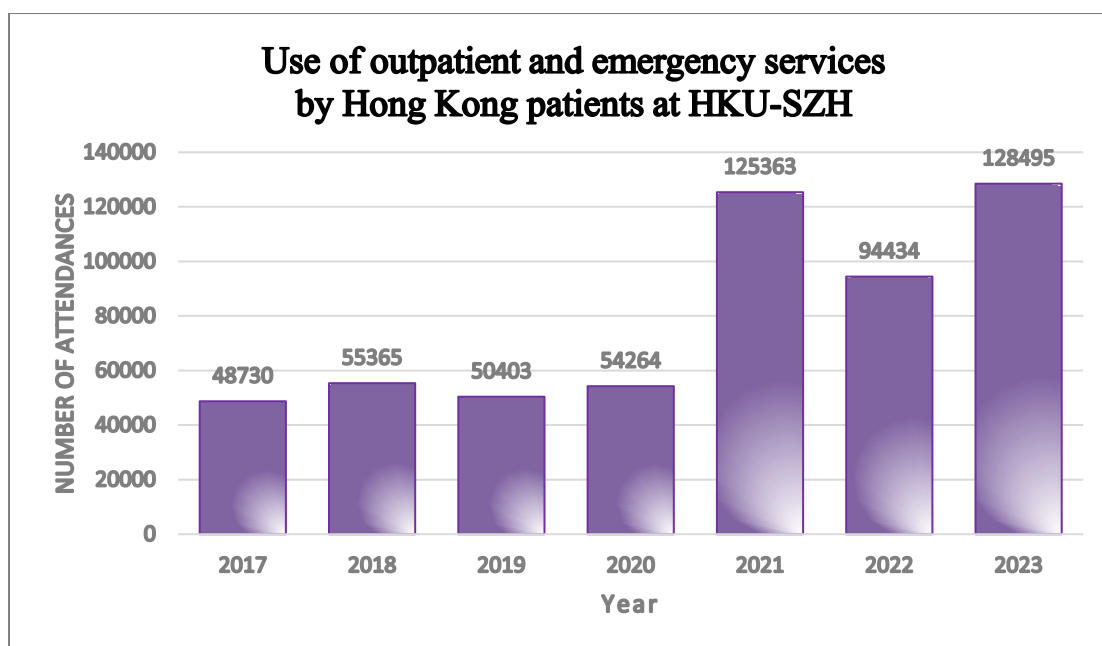


CHAPTER 2 — VISITS AND EXCHANGES

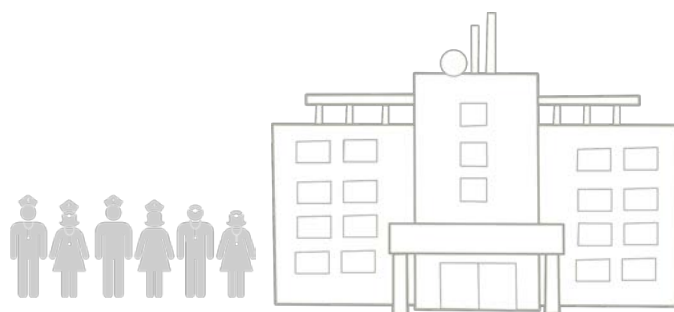
2.17 Members note that HKU-SZH, an integrated Grade 3A hospital operated under the model of modern management and cooperation between Hong Kong and Shenzhen, has been serving as the pilot trial institution and the largest platform for propelling cross-boundary medical collaboration. It is the very first GBA Mainland medical institution where EHCVs can be used to pay for designated outpatient services since 2015. In 2021, HKU-SZH was designated as the only healthcare institution to implement the policy of using Hong Kong-registered drugs and medical devices used in Hong Kong public hospitals in GBA on a trial basis, and subsequently in the same year, it became one of the first batch of designated healthcare institutions being allowed to use Hong Kong-registered drugs and medical devices used in Hong Kong public hospitals. Moreover, it has launched the “Pilot Scheme for Supporting Patients of the Hospital Authority in the in the Guangdong-Hong Kong-Macao Greater Bay Area” since 2023. Notably, the HKSAR Government proposes to designate HKU-SZH as the first hospital on the Mainland side for the trial cross-boundary ambulance arrangement between Mainland and Hong Kong under the “Pilot Scheme for Direct Cross-boundary Ambulance Transfer in the Greater Bay Area”, under which HKU-SZH will directly liaise with the public hospitals in Hong Kong designated by HA.



CHAPTER 2 — VISITS AND EXCHANGES



2.18 During the visit to HKU-SZH, the HHB personnel briefed Members on the two new functions of the eHealth mobile application, namely “Cross-boundary Health Record” and “Personal Folder”, which will be launched at HKU-SZH on a trial basis from 15 July 2024 onwards to facilitate cross-boundary medical collaboration. The “Cross-boundary Health Record” function is only applicable to hospitals outside Hong Kong that are specified and certified by HHB. The healthcare professionals at HKU-SZH will be able to access the electronic health records deposited in the eHealth accounts of eligible EHCV users over the past three years by scanning the relevant QR codes presented by the EHCV users. Meanwhile, the “Personal Folder” function enables eHealth users to deposit medical records obtained during consultations in medical institutions outside Hong Kong into their eHealth personal accounts, which will facilitate the storage and usage of personal medical records obtained in and outside of Hong Kong.



CHAPTER 2 — VISITS AND EXCHANGES



Members are briefed by the Health Bureau on the new functions “Cross-boundary Health Record” and “Personal Folder” of the eHealth mobile application, which will be launched on a trial basis at the hospital on 15 July 2024.

Assisted reproductive services

2.19 Members are pleased to note that HKU-SZH has set up Centers of Excellence by introducing HKU’s outstanding disciplines for key development, including the Reproductive Medicine and Prenatal Diagnosis Center. Members note that the use of assisted reproductive services in Hong Kong public hospitals is subject to certain conditions, whereas few restrictions are imposed in the Mainland, and that HKU-SZH offers such services in packages at significantly lower costs compared with that of similar services in Hong Kong.

2.20 As advised by HKU-SZH, its core value is to deliver patient-centred care tailored to patients’ needs. The advantage of HKU-SZH is that it conducts infertility research while also providing clinical services, with a target of delivering globally leading medical services. The Reproductive Medicine Center is cooperating with HKU and Queen Mary Hospital, with a view to realizing the concept of “one department with two

CHAPTER 2 — VISITS AND EXCHANGES

centres”, so that doctors from HKU-SZH and Queen Mary Hospital can serve both hospitals at the same time.

Mental health services

2.21 Members are also concerned how the Department of General Medicine at HKU-SZH provides mental health support for patients. HKU-SZH advised that its general services are equipped to address patients’ psychological needs, while the four psychotherapists engaged will accept referrals and share the burden of general practitioners. HKU-SZH will explore ways to enhance services in this area. At present, there is only one psychiatric hospital in Shenzhen to which severe cases are referred, although the number of such cases is limited.

How Hong Kong—Shenzhen Hospital will achieve a fiscal balance upon expansion

2.22 Regarding the ongoing expansion project of HKU-SZH, some Members are concerned about the financial costs induced by additional hospital beds and whether the cost could be recovered so as to achieve a fiscal balance.

2.23 Members note that cost savings in drugs and medical devices of Mainland hospitals are generally achieved by means of bulk procurement. In Hong Kong, 97% of the medical costs are financed by government funding allocated to HA, with patients contributing only 3% towards medical expenses. In the Mainland, the Government provides funding for the construction of hospitals, which will be operated on a self-financing basis afterwards, though with some Government subsidies (13% of HKU-SZH’s expenditure was subsidized by the Mainland Government in 2023). As such, hospitals in the Mainland do attach great importance to efficiency so as to avoid losses. As to bed allocation, those hospital departments experiencing rapid growth will take up a greater share of beds.

2.24 Members also learn that the staff remuneration system of public hospitals in the Mainland differs from that of Hong Kong. In the Mainland, doctors are entitled to performance bonuses on top of their basic salaries. As in the case of HKU-SZH, the basic salary and performance bonus account for 70% and 30% of a doctor’s pay respectively. Such a remuneration structure is designed to drive hospital efficiency.

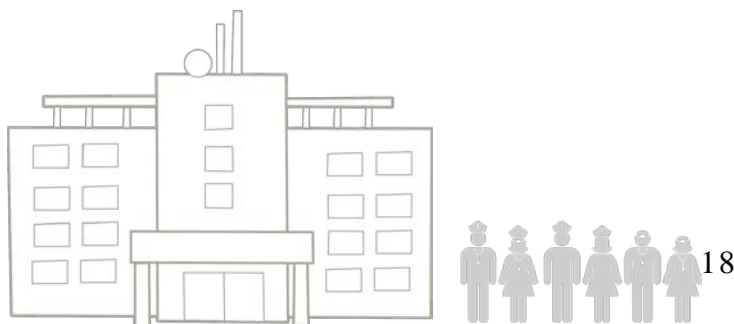
CHAPTER 2 — VISITS AND EXCHANGES

Home care services

2.25 In response to Members' enquiries, representatives of ZS CXH Hospital highlighted that the hospital would provide services to mobility-impaired groups such as post-discharged patients, aged or disabled/semi-disabled elderly persons, convalescents, patients suffering from end-stage diseases and patients with chronic illnesses. The "Internet Plus Healthcare Services" was launched in July 2019 to enable members of the public to, simply by making appointments via their mobile phones, receive home care services provided by well-experienced nurses of various clinical specialties in the comfort of their own homes, thereby reducing the patients' hassle of travelling to and from the hospital.

Training talents in integrated traditional Chinese and Western medicine

2.26 On personnel training, Members note that ZS CXH Hospital requires its doctors to meet certain assessment targets each year. Moreover, the hospital has also launched the Chinese Medicine Cultural Festival for nine consecutive years, featuring traditional Chinese medicine contests. The training in traditional Chinese medicine encompasses knowledge of Western medicine, while the training in Western medicine includes an understanding of traditional Chinese medicine.



CHAPTER 2 — VISITS AND EXCHANGES



The delegation engages in a seminar and working lunch with representatives of ZS CXH Hospital



The delegation engages in a seminar with representatives of HKU-SZH

CHAPTER 3 — OBSERVATIONS AND RECOMMENDATIONS

Medical standards, services and facilities of the ZhongShan Chenxinghai Hospital of Integrated Traditional Chinese and Western Medicine and the University of Hong Kong—Shenzhen Hospital

3.1 The delegation is impressed by the facilities and services of ZS CXH Hospital and HKU-SZH, such as the former's innovative 3D printing for medical devices, time-honored bee venom acupuncture therapy and its thought into children's overall experience during dental treatment, as well as the fully automated dispensary at HKU-SZH. The delegation finds that both hospitals excel in medical standards, services and facilities, in particular their spacious environment and abundant manpower.

3.2 The delegation also highly appreciates ZS CXH Hospital and HKU-SZH's performance in the realm of integrated Chinese-Western medicine and Chinese medicine practitioner training. They consider the successful experience gained and approaches adopted by the two hospitals in these domains as valuable lessons that Hong Kong medical institutions can learn from and use as reference. This is particularly true in respect of integrated Chinese-Western medicine as the two hospitals have provided more comprehensive and personalized treatment plans that achieve significant efficacy by combining the strengths of Chinese and Western medicines. In addition, the two hospitals have made significant contributions in the training of Chinese medicine practitioners and cultivation of a large pool of talents in this field. The delegation suggests that the Administration draw on the experience of the two hospitals and push forward Hong Kong's development in these areas.

Elderly Health Care Voucher Greater Bay Area Pilot Scheme

3.3 At present, there are only nine service points ⁵ in GBA for using Hong Kong's EHCVs, of which five are located in Shenzhen. In view of this, the delegation suggests further expanding the EHCV GBA Pilot Scheme to cover the nine municipalities ⁶ in Guangdong Province as soon as possible with a view to making the services available at multiple locations in each city.

⁵ The names of the nine service points and the districts in which they are located are set out in paragraph 1.4 above and footnote 2.

⁶ The nine municipalities are Guangzhou, Shenzhen, Zhuhai, Foshan, Huizhou, Dongguan, Zhongshan, Jiangmen and Zhaoqing.

CHAPTER 3 — OBSERVATIONS AND RECOMMENDATIONS

3.4 Regarding the subvented medical service items, the delegation points out that HKU-SZH currently serves over 100 000 Hong Kong people each year and enjoys a good reputation for its services. If the coverage of EHCVs is expanded to physical check-ups and surgical treatment, it will greatly shorten patients' waiting time for services provided by the hospitals and clinics under HA and also help patients save the cost of receiving treatment in Hong Kong. The delegation also urges the Administration to continually step up efforts in publicizing the relevant policies and services of Grade 3A hospitals in GBA with a view to enhancing the awareness and the level of participation of Hong Kong elderly persons.

Cross-boundary medical cooperation

3.5 In respect of cross-boundary medical cooperation, the delegation hopes that on top of continuously expanding the formulary and list of devices under the policy of using Hong Kong-registered drugs and medical devices used in Hong Kong public hospitals in GBA, the Administration will also explore speedier and more flexible ways to introduce quality drugs (including those for treating cancers and rare diseases) from the Mainland and leverage the price advantage afforded by bulk procurement adopted in the Mainland for the benefit of Hong Kong patients. In addition, the delegation also recommends that the Administration should enhance the exchange of medical talents between Hong Kong and Guangdong for both sides to learn from each other's strengths, promote the transfer of knowledge and skills and achieve mutual progress.

3.6 The delegation is pleased to note that the new "Cross-boundary Health Record" and "Personal Folder" functions on the eHealth mobile application will be launched on a trial basis at HKU-SZH to facilitate cross-boundary medical collaboration. In view of the increasing number of Hong Kong people choosing to go north to live and live out their old age across the boundary amid the integration of GBA, the delegation welcomes the introduction of various pilot schemes to facilitate the elderly in seeking medical treatment in the Mainland, thereby sparing them the hassle of travelling back to Hong Kong to receive medical treatment and at the same time relieving the pressure on the healthcare system of Hong Kong.

CHAPTER 3 — OBSERVATIONS AND RECOMMENDATIONS

Provision of subsidized dental services for Hong Kong people

3.7 As dental services are provided at all the nine service points in GBA where Hong Kong's EHCVs can be used,⁷ the delegation recommends that the Administration should conduct pilot schemes of subsidizing the provision of dental services at these healthcare institutions for Hong Kong people who are not elderly, so as to make up for the inadequacy of public dental services in Hong Kong.

Assisted reproductive services

3.8 The delegation is pleased to note that HKU-SZH offers assisted reproductive services that cost far less than those provided in Hong Kong. In view of the passage of a Member's motion on "Policies on supporting assisted reproduction" by LegCo on 19 June 2024 which, among other things, urged the Government to provide tax deductions to Hong Kong residents who use assisted reproductive technologies at accredited healthcare institutions in Hong Kong or in the Mainland in order to encourage childbearing, the delegation reiterates its call on the Government to provide the aforesaid deductions, so as to benefit Hong Kong residents who use assisted reproduction services at accredited healthcare institutions in the Mainland such as HKU-SZH.

Home care services

3.9 The delegation highly appreciates the home care services provided for post-discharged patients by ZS CXH Hospital, which has adopted mobile phone technology for making appointments since as early as 2019 such that members of the public can receive home care services of various clinical specialties of the hospital in the comfort of their own homes, thereby reducing the patients' hassle of travelling to and from the hospital. The delegation recommends that the Administration should draw on the experience and practice of ZS CXH Hospital to improve the home care services in Hong Kong.

⁷ The names of the nine service points and the regions in which they are located are set out in paragraph 1.4 and footnote 2 above.

CHAPTER 3 — OBSERVATIONS AND RECOMMENDATIONS

Conclusion

3.10 In conclusion, the delegation expresses high appreciation of the facilities and services of ZS CXH Hospital and HKU-SZH, in particular their excellence in innovative medical technologies, integrated traditional Chinese-Western medicine and training of traditional Chinese medicine practitioners. It is proposed that Hong Kong should learn from these experiences of success and further enhance the quality of local healthcare services. In addition, the delegation stresses the importance of expanding the EHCV GBA Pilot Scheme and enhancing cross-boundary medical cooperation, so that more Hong Kong residents can benefit from the quality healthcare resources in GBA. The aims of these recommendations are to shorten patients' waiting time, reduce healthcare expenditure and enhance the quality of life of Hong Kong elders.

APPENDICES

Appendix 1

List of delegation members and accompanying staff of the Legislative Council Secretariat

Delegation members

The delegation comprised a total of 12 Members as follows:

Members of the Panel

Hon CHAN Hoi-yan
(Chairman of the Panel and Leader of Delegation)
Dr Hon David LAM Tzit-yuen
(Deputy Chairman of the Panel)
Hon Stanley LI Sai-wing, MH, JP
Hon LAM So-wai
Hon Judy CHAN Kapui, MH, JP
Hon Kingsley WONG Kwok, BBS, JP
Prof Hon CHAN Wing-kwong

Non-Panel Members

Hon Elizabeth QUAT, SBS, JP
Dr Hon Junius HO Kwan-yiu, BBS, JP
Hon Tony TSE Wai-chuen, BBS, JP
Hon Dennis LEUNG Tsz-wing, MH
Dr Hon NGAN Man-yu



APPENDICES

At the invitation of the Panel, Professor LO Chung-mau, Secretary for Health, also led a delegation composed of staff from the Health Bureau, the Department of Health and the Hospital Authority to join the visit. The list is as follows:

Health Bureau

Professor LO Chung-mau, BBS, JP
Secretary for Health

Mr Thomas CHAN Chung-ching, JP
Permanent Secretary for Health

Mr Eddie LEE Lik-kong, JP
Deputy Secretary for Health 2

Dr Joe FAN King-man
Senior Advisor (Secretary for Health's Office)

Mr Leo LI Ngo-chuen
Principal Assistant Secretary for Health 5

Ms Erica LAM Bing-bing
Principal Assistant Secretary for Health 6

Mr Keith KEI
Political Assistant to Secretary for Health

Ms Gwenda WONG Mei-ha
Chief Executive Officer (Health)5A

Ms Edith HO Wan-ching
Chief Management Services Officer (Health)6A

Mr Isaac CHAN Tin-chou
Assistant Secretary for Health 1B



APPENDICES

Mr Timothy TSANG Hing-bun
Senior Management Services Officer (Health)6A

Miss Kenix HAU Tsun-tsun
Senior Executive Officer (Health)5A

Miss Joceyia LAM Ka-yi
Executive Officer (Health)5B

Department of Health

Dr Teresa LI Mun-pik, JP
Deputy Director of Health

Dr Raymond HO Lei-ming
Assistant Director of Health (Elderly Health)

Dr Yonnie LAM Chau-kuen
Principal Medical & Health Officer (Primary Care)

Dr Rico CHU Wing-ho
Senior Dental Officer (Healthy Teeth Collaboration)

Hospital Authority

Dr Anna TONG Yee-ha
Chief Manager (eHealth)

Pegasus BUT Kwai-kin
Senior System Manager (eHealth+ Programme)

Secretariat staff

Mr Colin CHUI
Clerk to Panel

Ms Macy NG
Senior Council Secretary



APPENDICES

Appendix 2

**Delegation of the Panel on Health Services
Duty visit to the hospitals of Tier 3 Class A in Mainland cities of
the Guangdong-Hong Kong-Macao Greater Bay Area**

22 June 2024

Visit programme

Time	Programme
Morning	Heading to Zhongshan
	Visit to the ZhongShan Chenxinghai Hospital of Integrated Traditional Chinese and Western Medicine <ul style="list-style-type: none">➤ Visit the hospital➤ Seminar and working lunch
Afternoon	Heading to Shenzhen
	Visit to the University of Hong Kong-Shenzhen Hospital <ul style="list-style-type: none">➤ Visit the hospital➤ Seminar
Evening	Return to Hong Kong

