



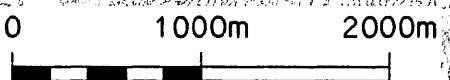




- Legends :
-  Proposed MOS rail alignment
 -  Proposed MOS rail station
 -  Proposed Tai Wai Depot
 -  Existing KCR alignment

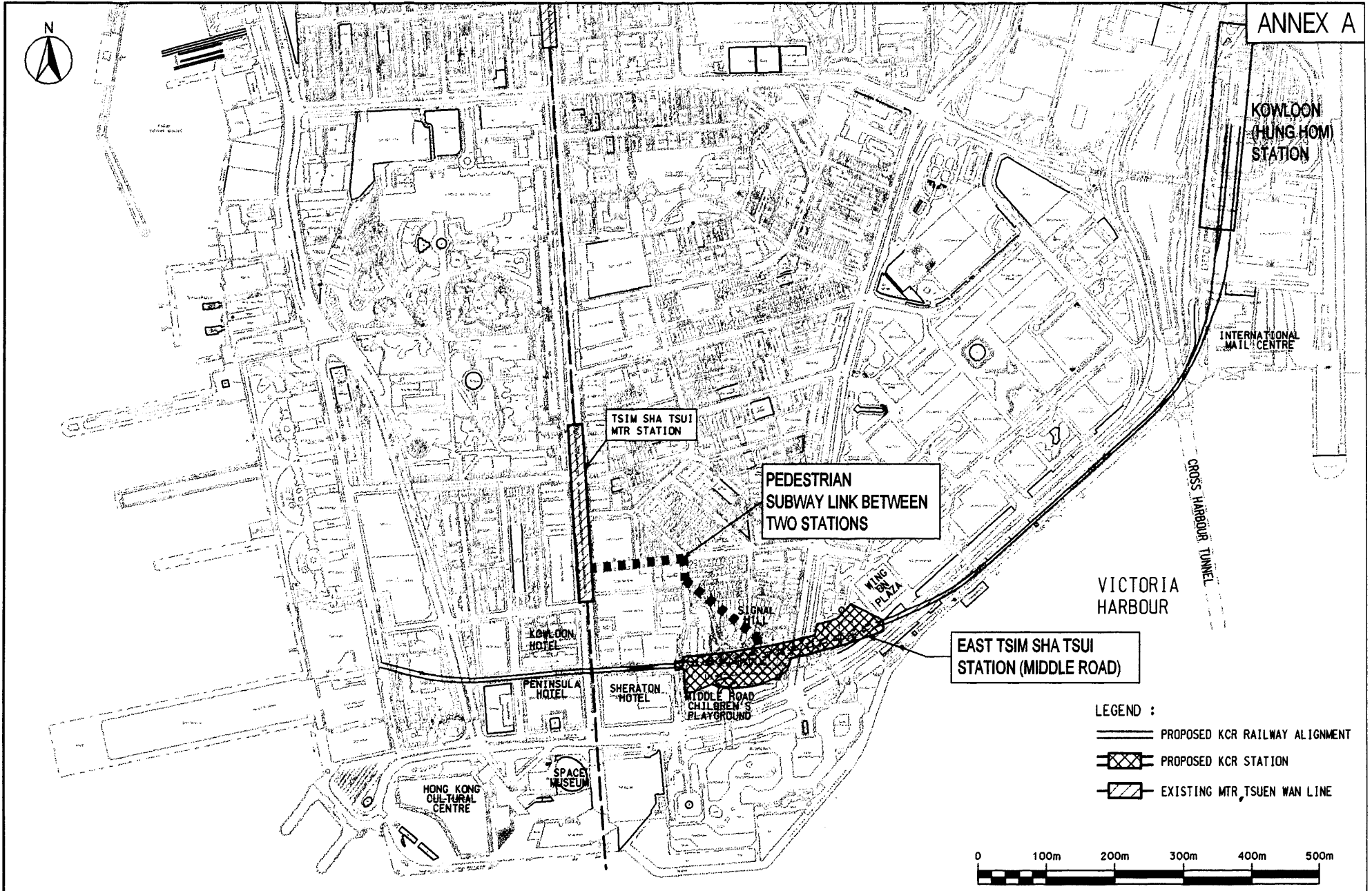



 Railway Development Office
 Highways Department

KCRC's Proposal

PROPOSED MOS RAIL ALIGNMENT AND STATIONS

DATE: SEPT 98 SCALE: AS SHOWN




 Railway Development Office
 Highways Department
 KCRC's Proposal

PROPOSED KCR EXTENSION TO TSIM SHA TSUI

DATE: SEP 98 SCALE: AS SHOWN